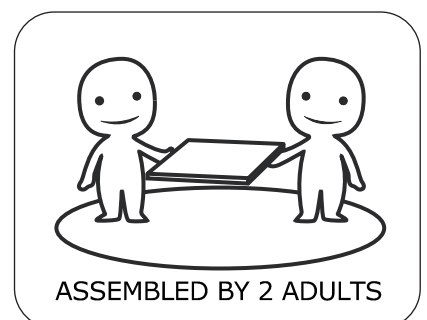
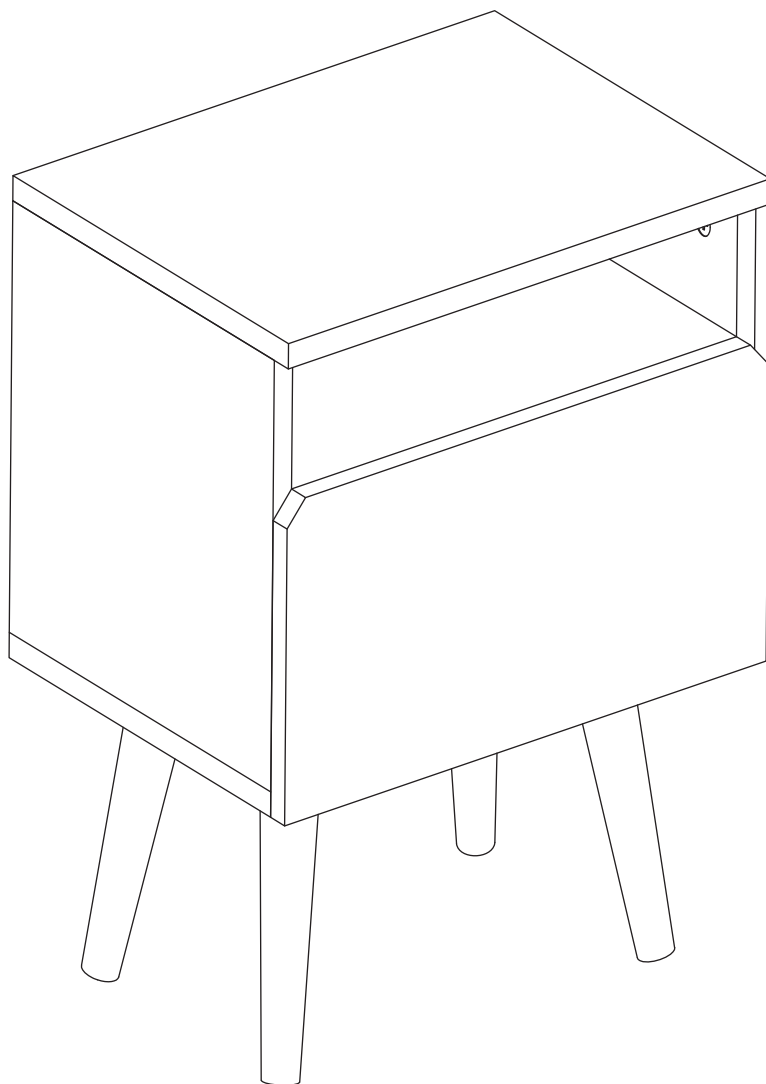
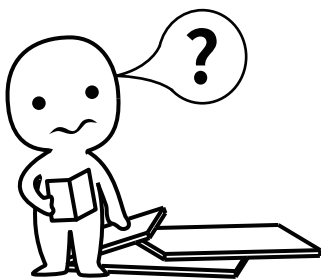


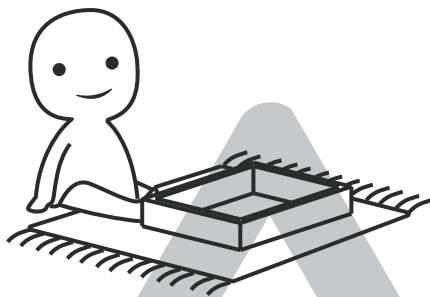
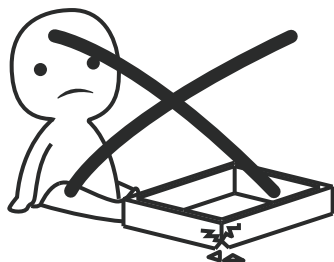
NIGHTSTAND





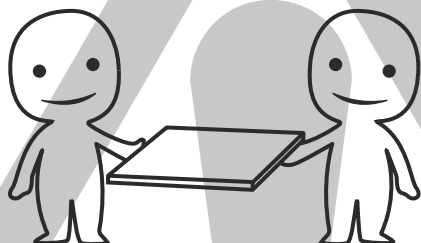
IMPORTANT INFORMATION!

please read the entire manual before starting to assemble and/or using this product. follow the manual thoroughly and keep it for further reference.



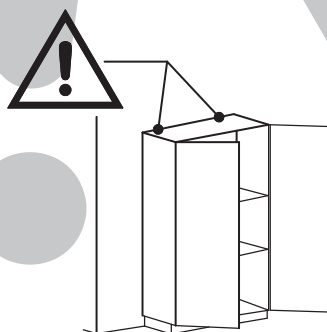
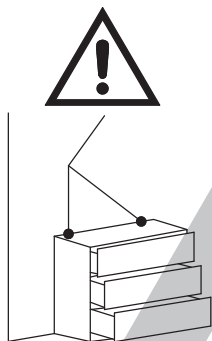
AVOID SCRATCHES!

In order to avoid scratching this furniture should be assembled on a soft layer—could be a rug.



IMPROVE EFFICIENCY !

Try to find a partner to install with you, which can speed up the installation process and shorten the time.



ANTI-TOPPLE WARNING !

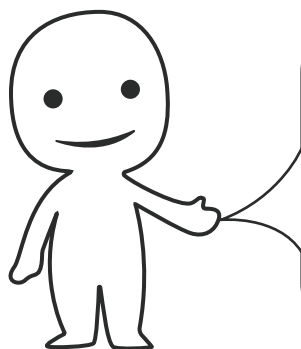
Overturned furniture can cause serious or fatal crush injuries. To prevent tipping over, be sure to use the wall attachment, if not included with this product. Please purchase the wall attachment that fit your wall. If unsure, seek professional advice. Please read and follow each step of the instructions carefully.

IMPORTANT !

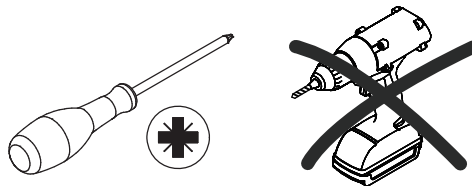
It is important that any product which is assembled using any kind of screw is re-tightened 2 weeks after assembly, and once every 3 months - in order to assure stability through-out the lifespan of the product.

For regular maintenance and cleaning of the product, for the frame, please use a rag dipped in neutral detergent to fully wipe it, and then dry it with a clean rag. For glass materials, wipe with a rag dampened with water glass cleaner, and then dry with a dry rag.

Do not use an electric screwdriver, and do not use too much force when installing, because the board is easy to break.

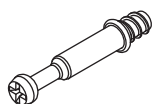


Please prepare the following tools



When installing, please carefully confirm whether each screw corresponds to the manual, accessories with similar shapes can be distinguished by size

A x 12



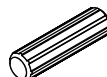
Ø 6 x 35 mm

B x 12



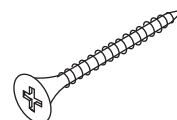
Ø 15 x 9 mm

C x 12



Ø 8 x 30 mm

D x 4



Ø 5 x 40 mm

E x 6



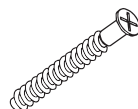
Ø 4 x 20 mm

F x 20



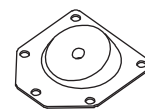
Ø 4 x 14 mm

G x 4

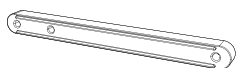


Ø 5 x 40 mm

J x 4



⑪ x 2



BASIC INFORMATION

NAME: Nightstand with Drawer

Product size: W15.5*D11.5*H18.5"

Drawer size: W13*D3.5*H9.5"

Material: MDF+Wood

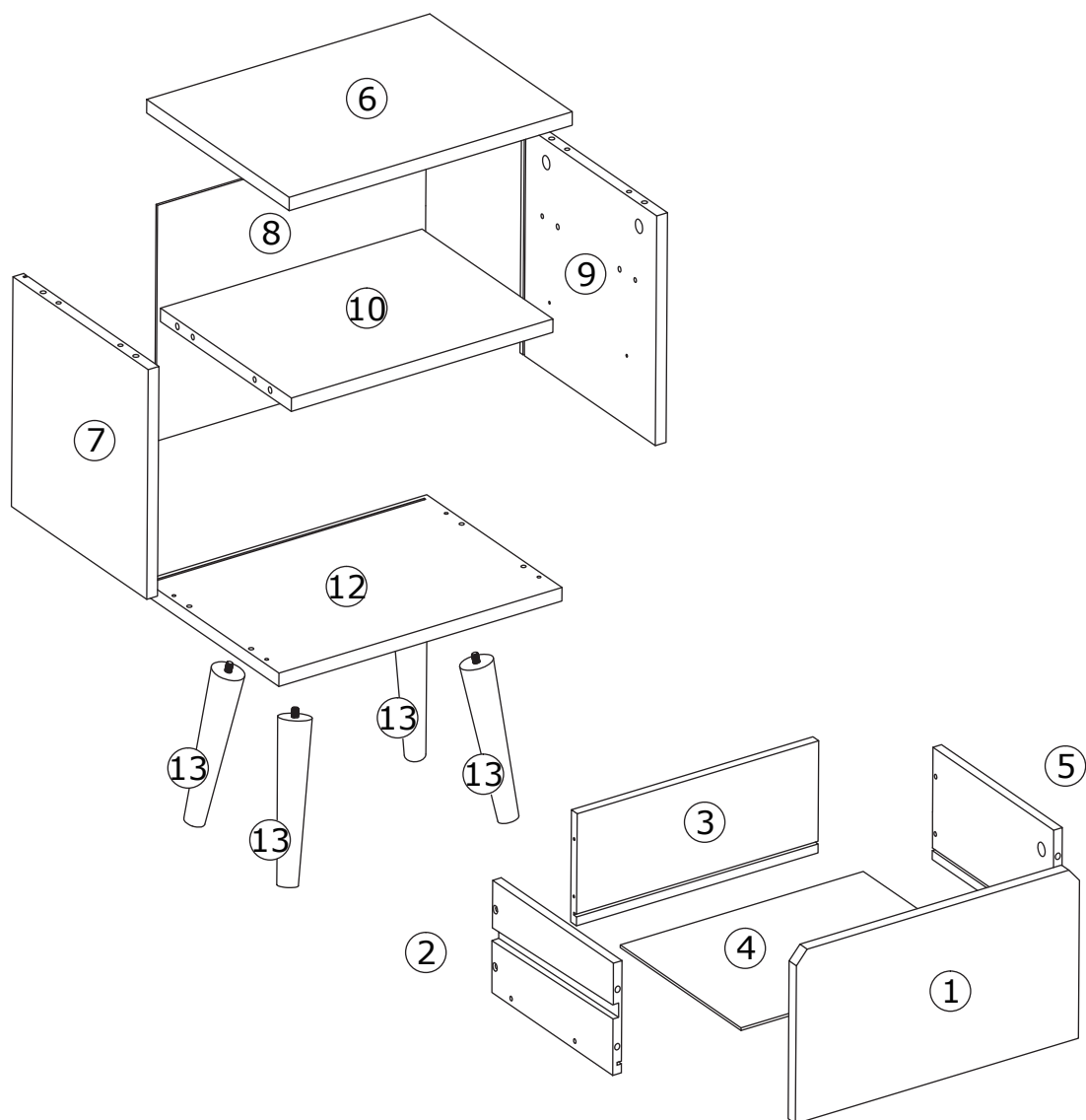
Color: White/Black/Natural Wood

MAX Load(Top):22lbs

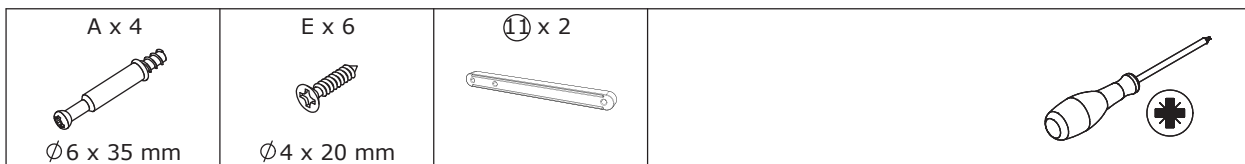
MAX Load(Drawer):22lbs

Assembly Required: Yes

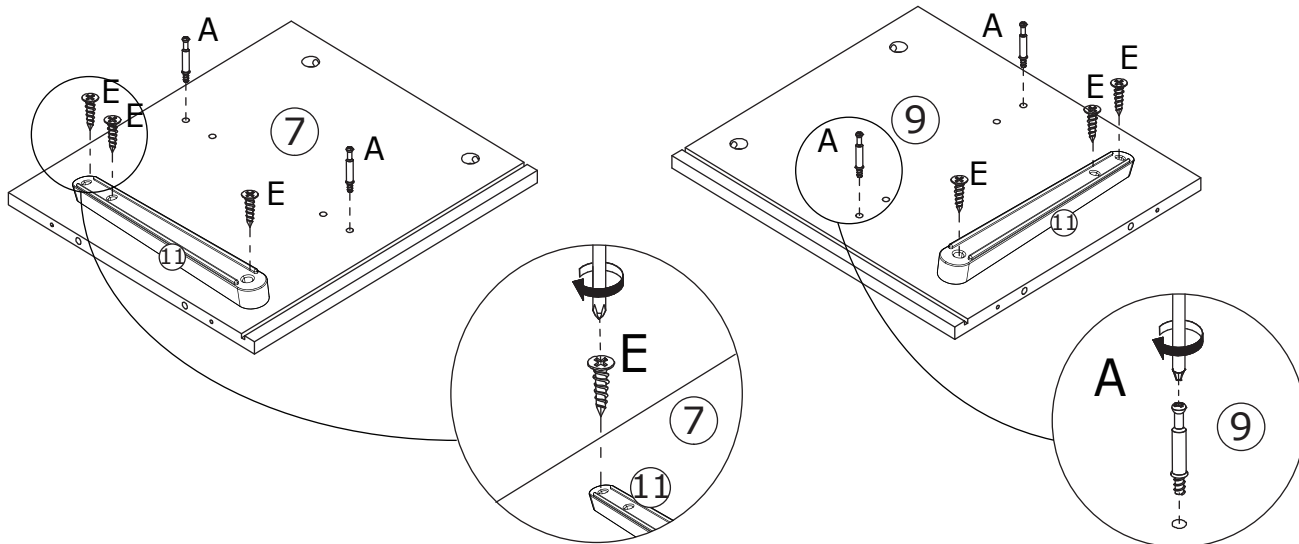
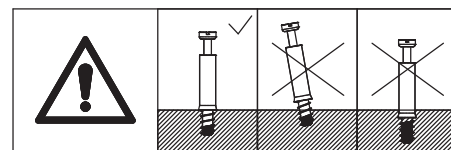
Pack List



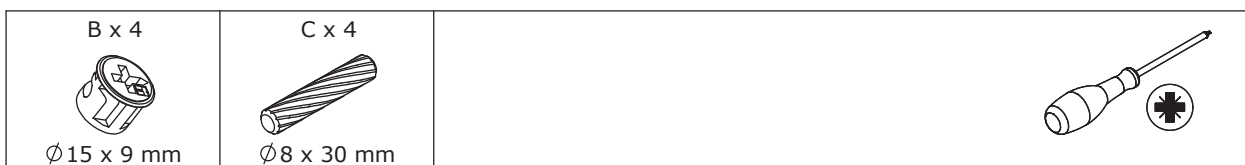
1



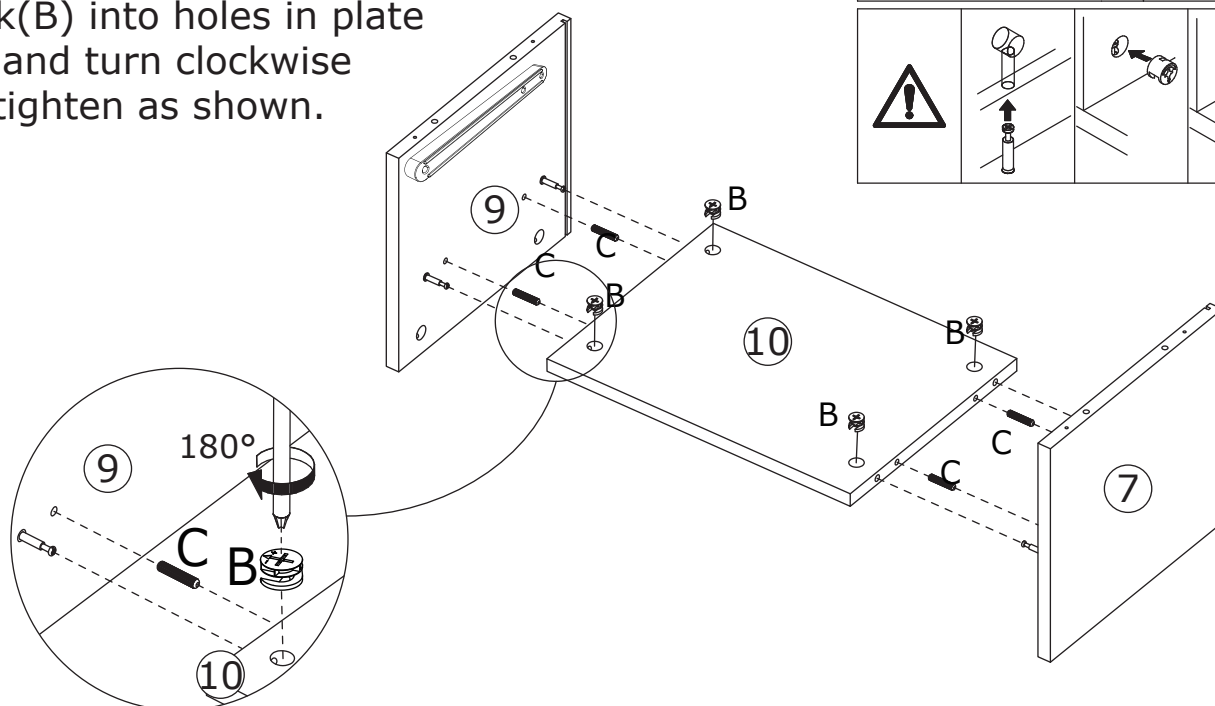
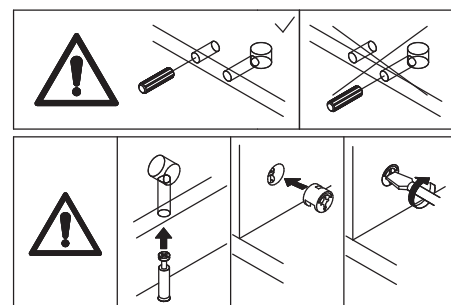
Fix slide rail(H x 2) to plate 7 and 9 respectively using screw(E) as shown. Insert quickfit screw(A) into plate 9 and 7 with a screwdriver at first.



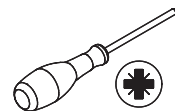
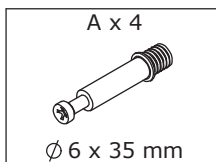
2



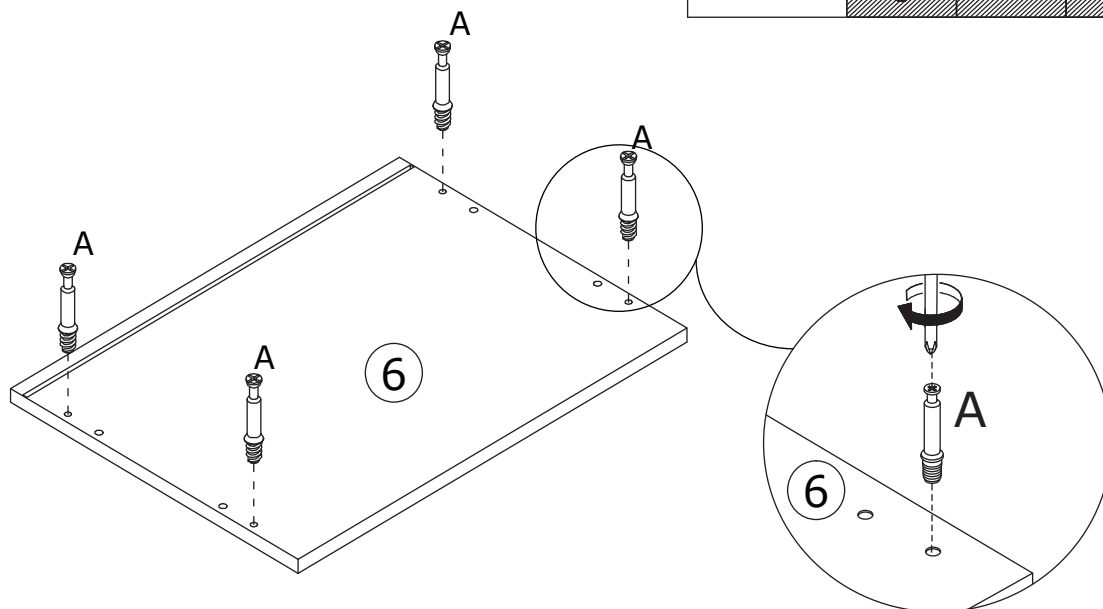
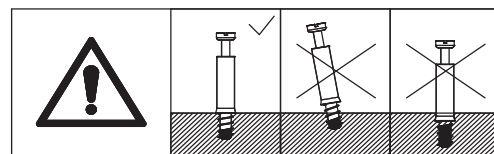
Connect plate 7 and 9 with plate 10 using wooden dowel(C), put cam lock(B) into holes in plate 10 and turn clockwise to tighten as shown.



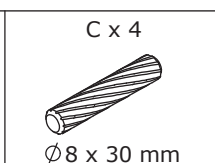
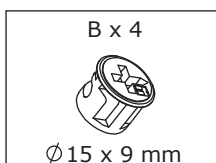
3



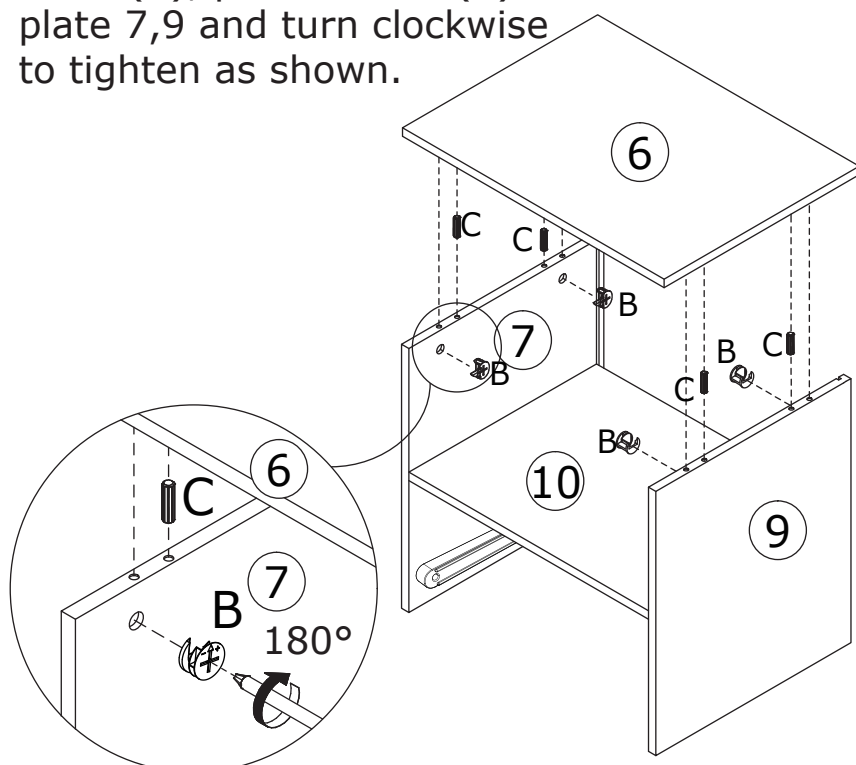
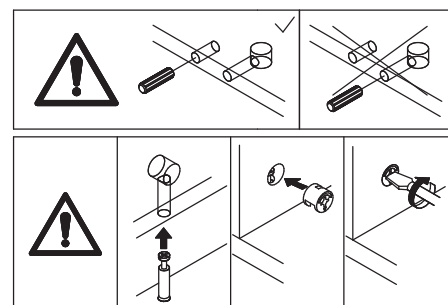
Insert quickfit screw(A) into corresponding holes in plate 6 with a screwdriver as shown.



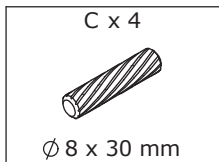
4



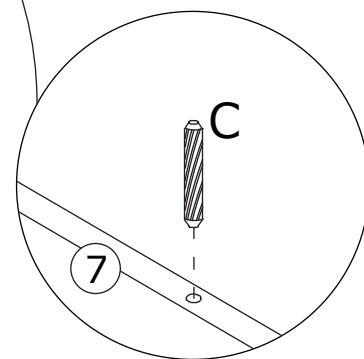
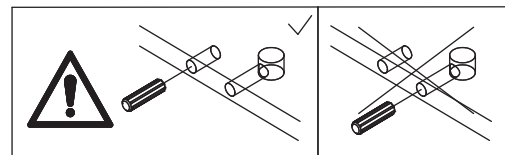
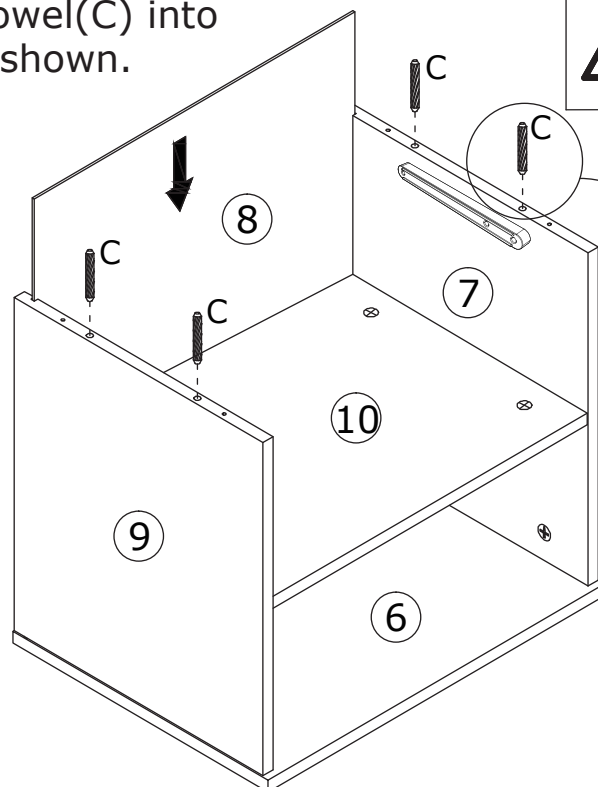
Cover plate 6 to plate 7 and 9 with wooden dowel(C), put cam lock(B) into holes in plate 7,9 and turn clockwise to tighten as shown.



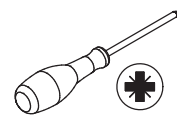
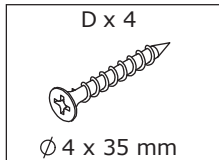
5



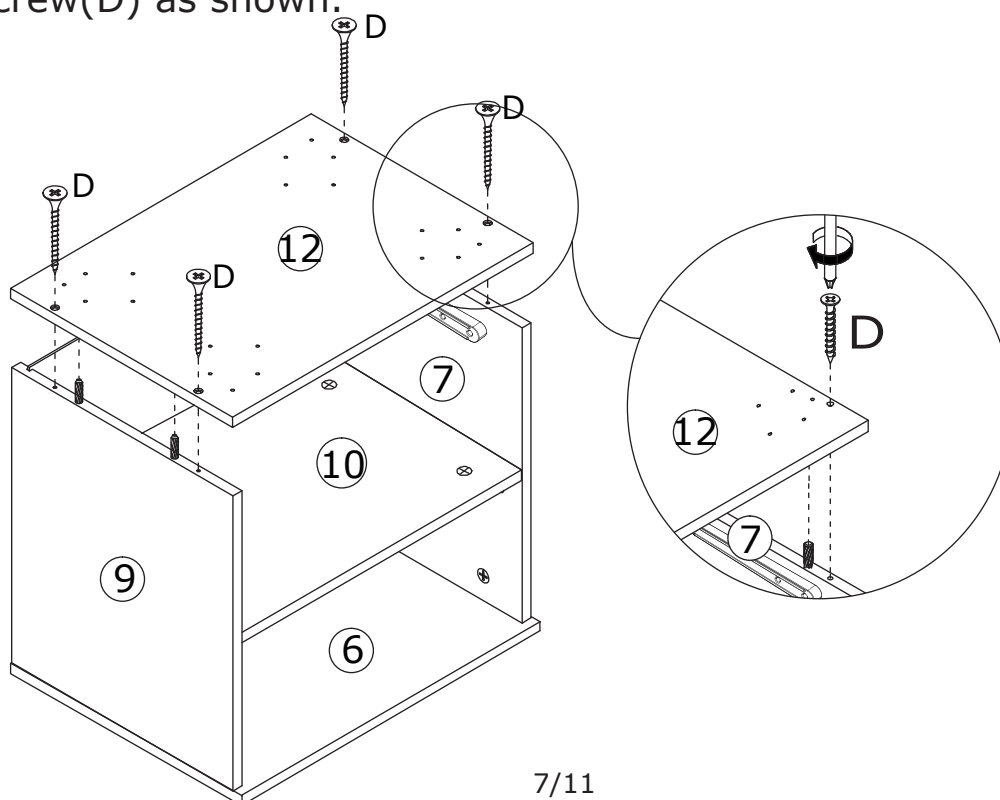
Slide plate 8 along grooves as shown.
Insert wooden dowel(C) into
plate 7 and 9 as shown.



6



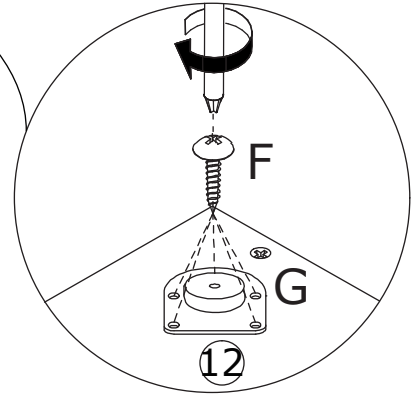
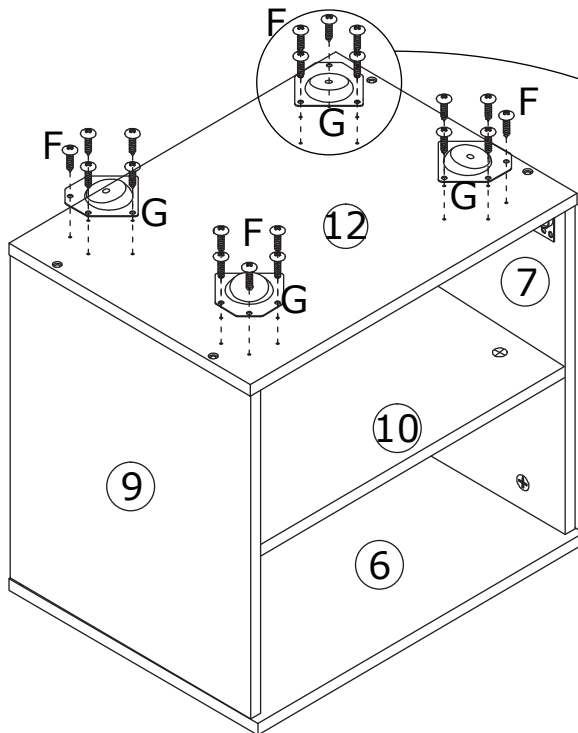
Attach plate 12 to plate 7 and 9, then fix
using screw(D) as shown.



7

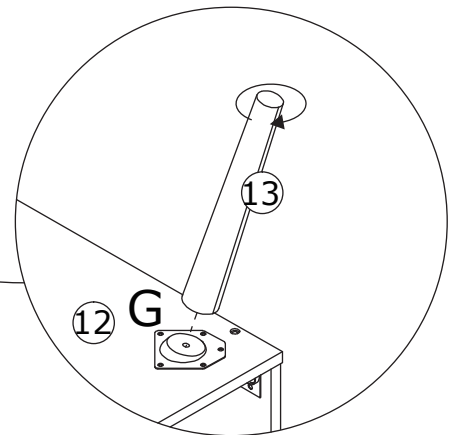
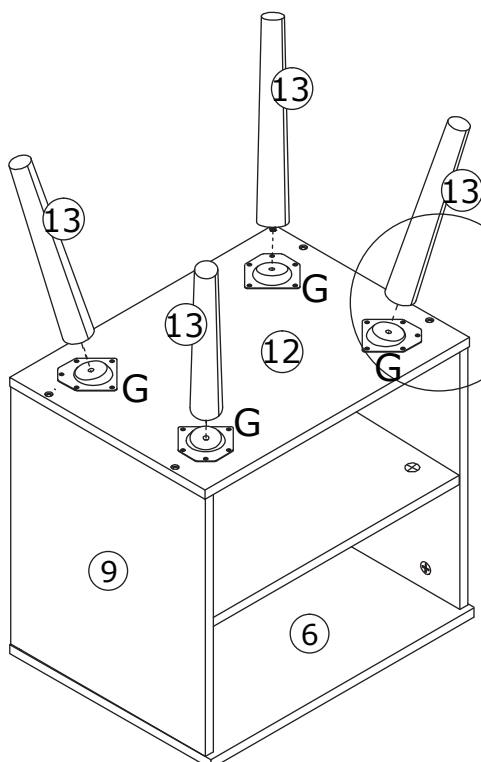


Fix iron sheet(G) to plate 12 using screw(F) as shown.



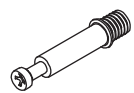
8

Rotate leg 13 into the sheet.

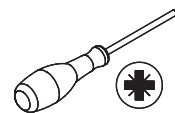


9

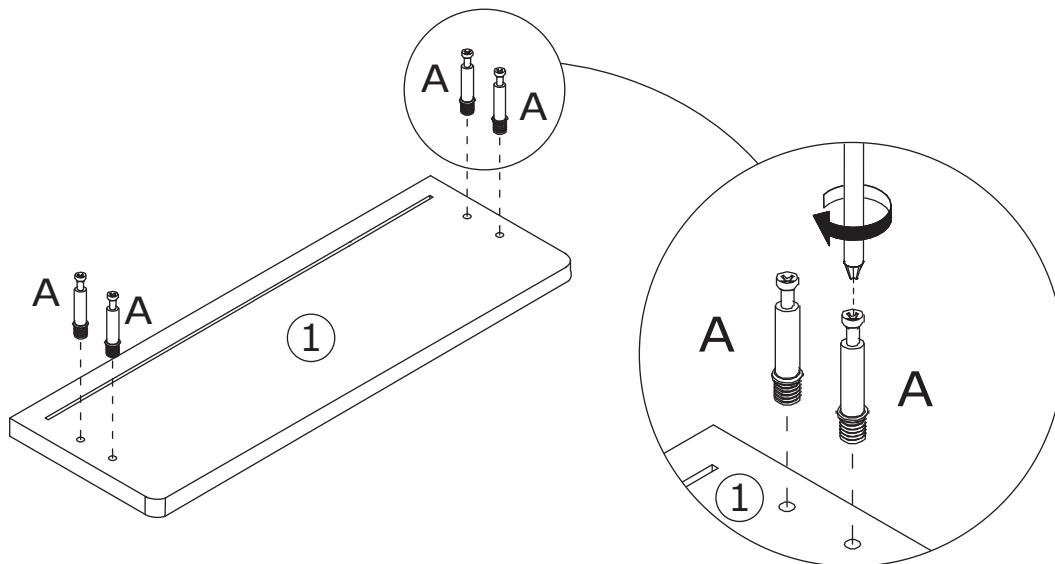
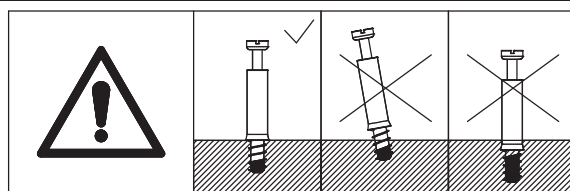
A x 4



Ø 6 x 35 mm



Insert quickfit screw(A) into plate 1 as shown.

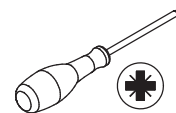


10

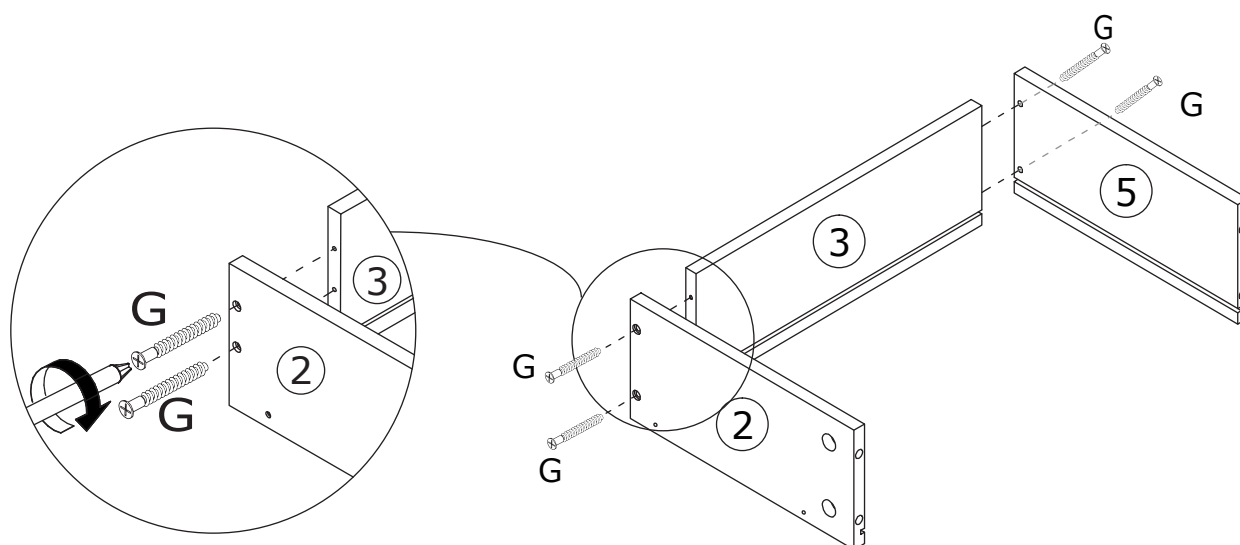
G x 4



Ø 5 x 40 mm



Fix plate 2 and 5 to plate 3 using screw(G) as shown.

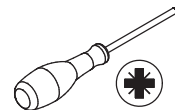


11

B x 4

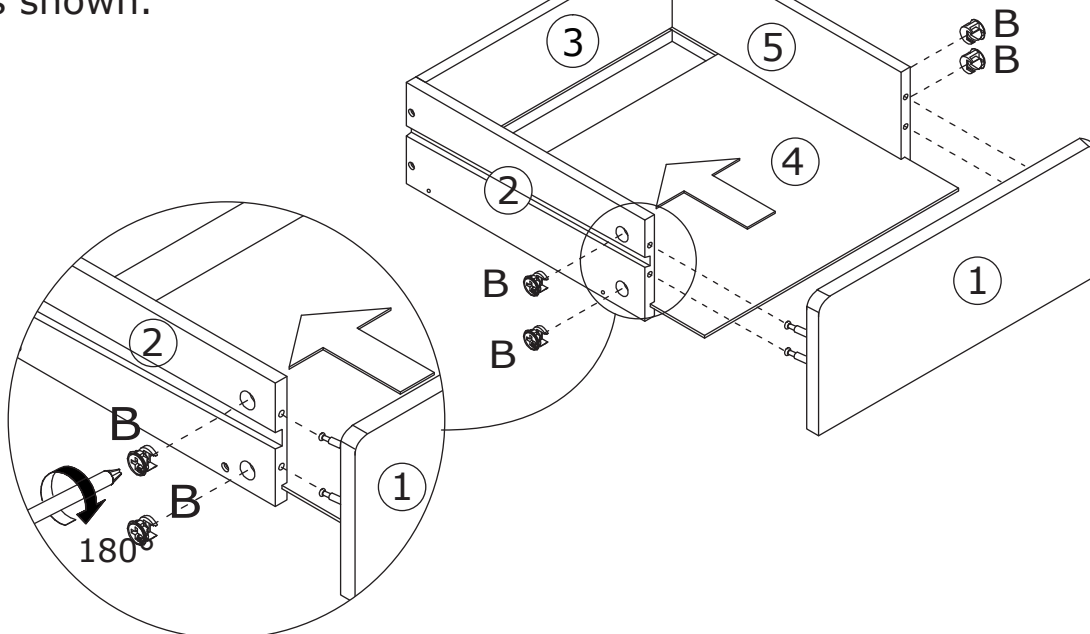
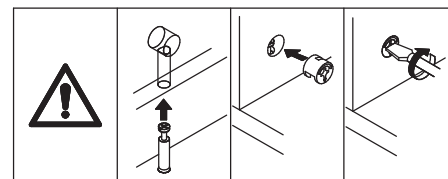


Ø 15 x 9 mm



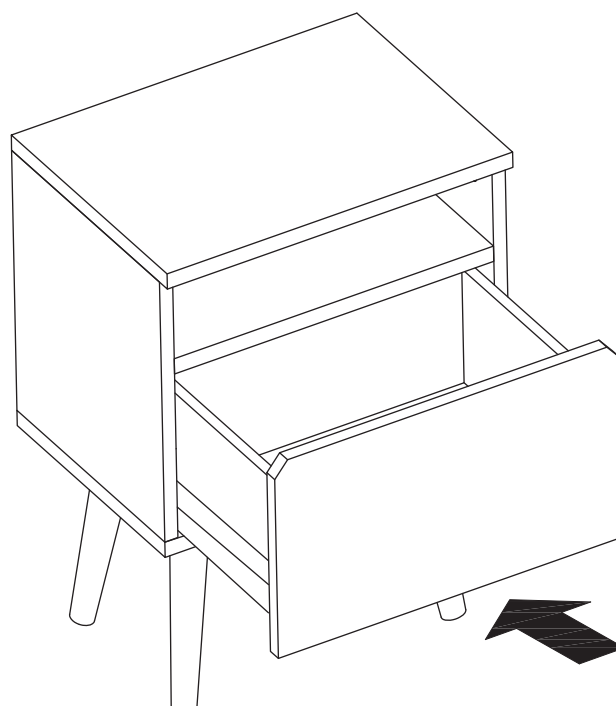
Slide plate 4 along grooves, attach plate 1 to the drawer.

And put cam lock(B) into holes in plate 2,5 and turn clockwise to tighten as shown.



12

Align rails, slide the drawer.



⚠ WARNING

Children have died from furniture tipover. To reduce the risk of furniture tipover:

- ALWAYS install tipover restraint provided.
- NEVER put a TV on this product.
- NEVER allow children to stand, climb or hang on drawers, doors, or shelves.
- NEVER open more than one drawer at a time.
- Place heaviest items in the lowest drawers.

*This is a permanent label.
Do not remove!*

TIPS

- 1** It is important that any product which is assembled using any kind of screw is re-tightened 2 weeks after assembly, and once every 3 months – in order to assure stability throughout the lifespan of the product.
- 2** For regular maintenance and cleaning of the product, for the frame, please use a rag dipped in neutral detergent to fully wipe it, and then dry it with a clean rag. For glass materials, wipe with a rag dampened with glass cleaner mixed with water, and then dry with a dry rag.
- 3** Do not use an electric screwdriver, and do not use too much force when installing, because the board is easy to break.

After-sales Service

For any inquiries, technical support, or warranty claims, do not hesitate to reach out to our dedicated customer service team. We appreciate your decision to choose us and hope that this manual effectively guides you in using and maintaining your product. Thank you for your trust and happy time!



Email : hello.hdpe@gmail.com