

# Installation Instructions for Reflectix, Inc. Single Reflective/ White Double Bubble Insulation



Product consists of one, 96% + reflective film outer layer and one heavy gauge white polyethylene film outer layer, bonded to two internal layers of heavy gauge polyethylene bubbles (5/16" thick). Reflectix offers this Reflective Insulation in 16", 24" and 48" widths by a 100' length.



**Products:** Reflectix® Single Reflective/White Insulation with the product code prefix "RDBW"

**Pdf Links:** Click on the application below for the location of a detailed Installation Instruction pdf:



## Metal Building Applications:

- Roof / New
- Roof / Retrofit
- Wall / New
- Wall / Retrofit

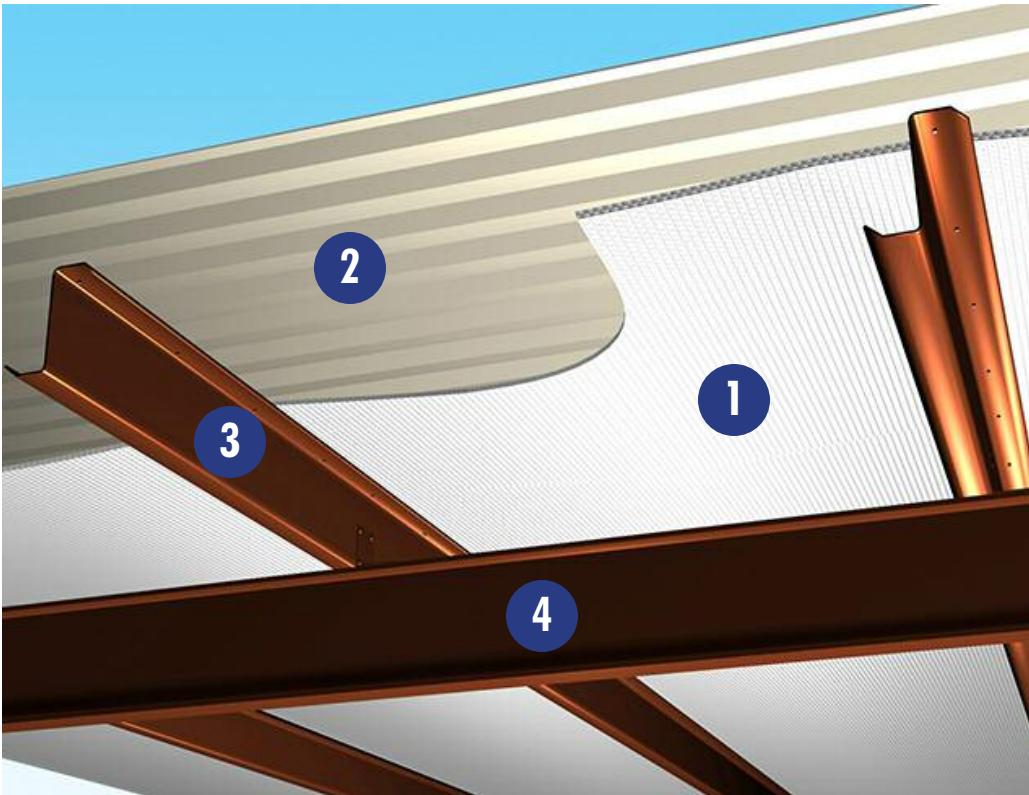
## Post Frame Building Applications:

- Roof / New
- Roof / Retro / Bottom of Purlins
- Roof / Retro / Bottom of Trusses
- Wall / New
- Wall / Retrofit



# Metal Building / Roof / New

## Reflectix Installation Instructions



1. Reflectix® Insulation
2. Exterior Roof Panel
3. Purlin
4. Red Metal (Structural Frame)

### Tools Required:

- Safety Glasses
- Tape Measure
- Utility Knife
- Screw Gun

### Recommended Products:

Reflective/Bubble/Bubble/White - Roll: RDBW48100 (48" x 100')

Open Interior with 3/4" Thermal Breaks

R-5.5\* Heat Flow Down

R-3.4\* Heat Flow Up

Open Interior without Thermal Breaks and a Nominal 3/4" Drape

R-7.5\* Heat Flow Down

R-3.6\* Heat Flow Up

### Installation Instructions: (There are 2 options)

#### 1. Open Interior with 3/4" Thermal Breaks

- The Reflectix® Insulation is installed with the "white side" towards the interior of the building.
- After the red metal is erected, install the Reflectix® Reflective/Bubble/Bubble/White product over the purlins by using 1/2" self-tapping metal screws and screwing the foil to the purlins.
- Tape the seams with a Reflectix® Foil Tape (goal is an air-tight, snug seam seal).

- Install at least a 3/4" thermal break. If installing a standing seam roof, use clips with thermal breaks.
- Install roofing either by screwing corrugated metal screws through the thermal break and insulation to the purlin or install a standing seam roof.

## 2. Open Interior without Thermal Breaks and a Nominal 3/4" Drape

- Per instructions above without the thermal break.

\* Includes thermal resistance of 0.61 UP and 0.92 DOWN for interior air film.

**Calculation Disclaimer:** All values are calculated based on the "ASHRAE Handbook of Fundamentals" heat flow up and down.

### Review These Important Safety Guidelines Prior to Installation:

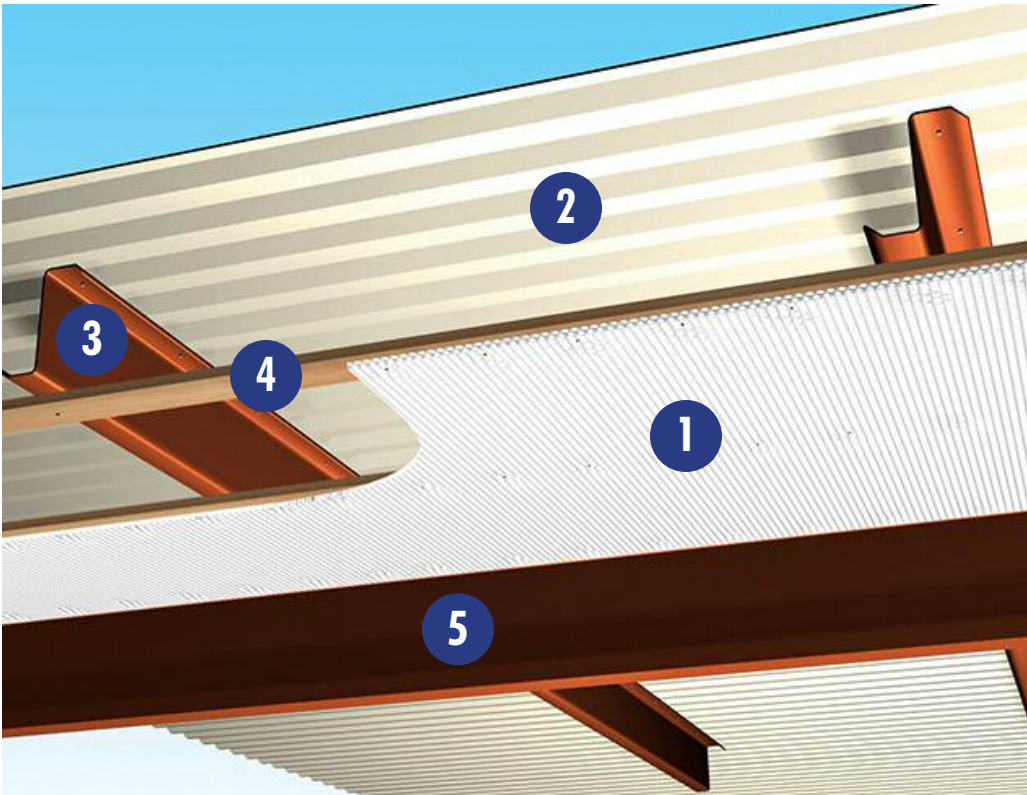
- **ALWAYS** check local building codes before installing Reflectix®.
- **ALWAYS** check the area you are insulating and make any needed repairs. Any worn wiring should be replaced before you begin installing Reflectix®.
- **ALWAYS** make sure work areas are well ventilated and well lighted.
- **ALWAYS** use eye protection when operating a staple gun.
- **ALWAYS** use caution and common sense when using a staple gun. Be aware of where electrical wiring is located. Stapling into a wire can cause severe shock or death. **NEVER** staple into electrical wiring.
- **ALWAYS** be careful when working with large pieces of Reflectix® on windy days.
- When installing Reflectix® on bright sunny days, it is best to wear sun glasses.
- Do not work in areas such as attics when temperatures are too hot.
- Visit our website at [www.reflectixinc.com](http://www.reflectixinc.com) for additional product and installation information.

### Please Note:

The intention of these Installation Instructions and 3-D renderings are for the sole purpose of illustrating the correct location and relative position of the Reflectix® products in specific building assemblies. The correct construction methods and techniques are the responsibility of the installer or contractor. The methods outlined are recommendations on location of the Reflectix® products as a guideline. There are no claims on the part of Reflectix, Inc. that these building assemblies are finite standards or meet building code requirements (as they can vary by region).

# Metal Building / Roof / Retrofit

## Reflectix Installation Instructions



1. Reflectix® Insulation
2. Exterior Roof Panel
3. Purlin
4. 1" x 2" (Nominal) Furring Strip
5. Red Metal (Structural Frame)

### Tools Required:

- Safety Glasses
- Tape Measure
- Utility Knife
- Screw Gun
- Staple Gun

### Recommended Products:

Reflective/Bubble/Bubble/White - Roll: RDBW48100 (48" x 100')

Open Interior with 1" x 2" Furring

R-7.5\* Heat Flow Down

R-3.6\* Heat Flow Up

### Installation Instructions:

- The Reflectix® Insulation is installed with the "white side" towards the interior of the building.
- Pre-installation inspection - Check the roof area for clutter, water sprinklers, conduit and lights. Sprinkler systems are especially important. All water pipes must be below the Reflectix® Reflective/Bubble/Bubble/White Insulation to prevent the possibility of freezing in the winter. In many instances the Reflectix® product must be installed up near the roof deck.
- Install 1" x 2" furring strips on the bottom of and perpendicular to the Z purlins on 22" centers. Utilize 1 1/4" self-tapping sheet metal screws to secure the furring strips to the Z purlins.
- Butt the furring strips together and tape. Staple tape for reinforcement.
- Attach the product using 5/16" staples at approximately 4" intervals.
- Staple the edges of the Reflectix® Reflective/Bubble/Bubble/White product to the furring strips with a 3/4" overlap at the seams.



- Tape the seams with a Reflectix® White Poly Tape (goal is an air-tight, snug seam seal).
- Staple product down the middle of the sheet into the furring strip above.

\* Includes thermal resistance of 0.61 UP and 0.92 DOWN for interior air film.

**Calculation Disclaimer: All values are calculated based on the “ASHRAE Handbook of Fundamentals” heat flow up and down.**

#### **Review These Important Safety Guidelines Prior to Installation:**

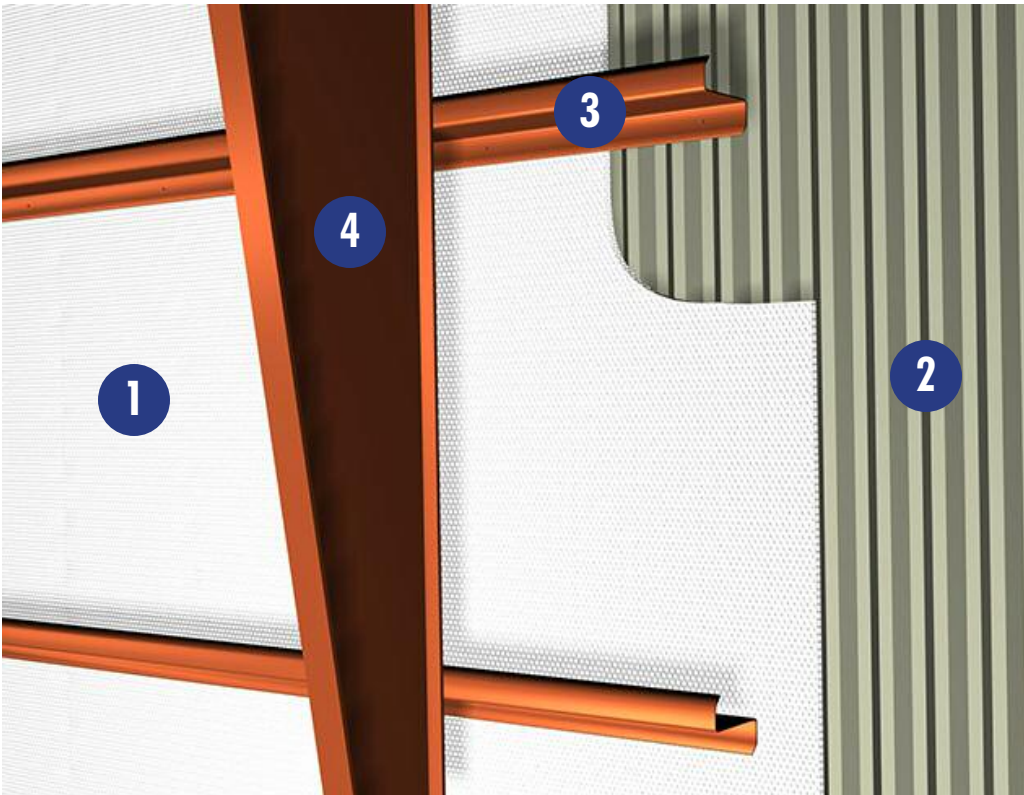
- **ALWAYS** check local building codes before installing Reflectix®.
- **ALWAYS** check the area you are insulating and make any needed repairs. Any worn wiring should be replaced before you begin installing Reflectix®.
- **ALWAYS** make sure work areas are well ventilated and well lighted.
- **ALWAYS** use eye protection when operating a staple gun.
- **ALWAYS** use caution and common sense when using a staple gun. Be aware of where electrical wiring is located. Stapling into a wire can cause severe shock or death. **NEVER** staple into electrical wiring.
- **ALWAYS** be careful when working with large pieces of Reflectix® on windy days.
- When installing Reflectix® on bright sunny days, it is best to wear sun glasses.
- Do not work in areas such as attics when temperatures are too hot.
- Visit our website at [www.reflectixinc.com](http://www.reflectixinc.com) for additional product and installation information.

#### **Please Note:**

The intention of these Installation Instructions and 3-D renderings are for the sole purpose of illustrating the correct location and relative position of the Reflectix® products in specific building assemblies. The correct construction methods and techniques are the responsibility of the installer or contractor. The methods outlined are recommendations on location of the Reflectix® products as a guideline. There are no claims on the part of Reflectix, Inc. that these building assemblies are finite standards or meet building code requirements (as they can vary by region).

# Metal Building / Wall / New

## Reflectix Installation Instructions



1. Reflectix® Insulation
2. Exterior Wall Panel
3. Girt
4. Red Metal (Structural Frame)

### Tools Required:

- Safety Glasses
- Tape Measure
- Utility Knife
- Screw Gun
- Staple Gun

### Recommended Products:

Reflective/Bubble/Bubble/White - Roll: RDBW48100 (48" x 100')

Open Interior with a 3/4" Thermal Break • R-4.6\* Heat Flow Horizontal

Open Interior with a Nominal 3/4" Drape in Product (No Thermal Break) • R-3.7\* Heat Flow Horizontal

### Installation Instructions: (There are 2 options)

#### 1. Installed with 3/4" Thermal Breaks

- The Reflectix® Insulation is installed with the "white side" towards the interior of the building.
- Install Reflectix® Reflective/Bubble/Bubble/White product vertically, using 1/2" self tapping screws to secure the insulation to the exterior of the C or Z girts.
- Tape the seams with a Reflectix® Foil Tape (goal is an air-tight, snug seam seal).
- Install a 3/4" thermal break and attach corrugated metal exterior finish.

#### 2. Installed with a 3/4" Drape in Product (No Thermal Break)

- Per instructions above without the thermal break.
- When installing the product, insure there is a drape (towards the interior) of at least 3/4" at the center of the cavity.

\* Includes thermal resistance of 0.68 interior air film.

**Calculation Disclaimer: All values are calculated based on the "ASHRAE Handbook of Fundamentals".**

**Review These Important Safety Guidelines Prior to Installation:**

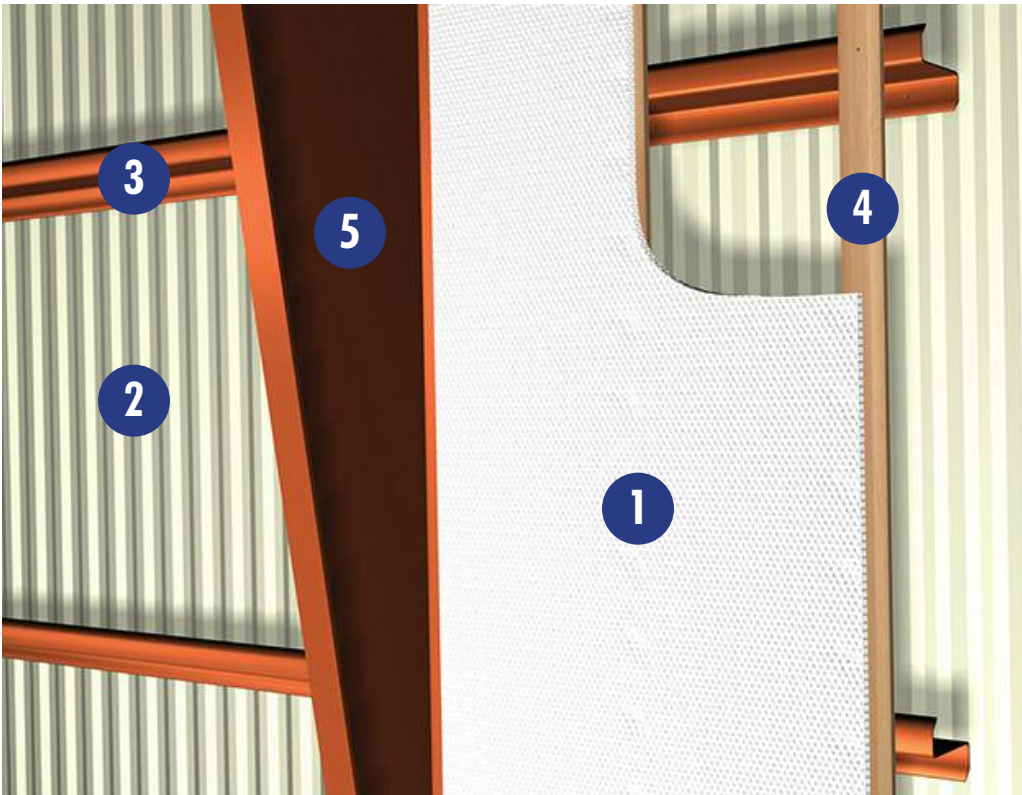
- **ALWAYS** check local building codes before installing Reflectix®.
- **ALWAYS** check the area you are insulating and make any needed repairs. Any worn wiring should be replaced before you begin installing Reflectix®.
- **ALWAYS** make sure work areas are well ventilated and well lighted.
- **ALWAYS** use eye protection when operating a staple gun.
- **ALWAYS** use caution and common sense when using a staple gun. Be aware of where electrical wiring is located. Stapling into a wire can cause severe shock or death. **NEVER** staple into electrical wiring.
- **ALWAYS** be careful when working with large pieces of Reflectix® on windy days.
- When installing Reflectix® on bright sunny days, it is best to wear sun glasses.
- Do not work in areas such as attics when temperatures are too hot.
- Visit our website at [www.reflectixinc.com](http://www.reflectixinc.com) for additional product and installation information.

**Please Note:**

The intention of these Installation Instructions and 3-D renderings are for the sole purpose of illustrating the correct location and relative position of the Reflectix® products in specific building assemblies. The correct construction methods and techniques are the responsibility of the installer or contractor. The methods outlined are recommendations on location of the Reflectix® products as a guideline. There are no claims on the part of Reflectix, Inc. that these building assemblies are finite standards or meet building code requirements (as they can vary by region).

# Metal Building / Wall / Retrofit

## Reflectix Installation Instructions



1. Reflectix® Insulation
2. Exterior Wall Panel
3. Girt
4. 1"x 2" (Nominal) Furring Strip
5. Red Metal (Structural Frame)

### Tools Required:

- Safety Glasses
- Tape Measure
- Utility Knife
- Screw Gun
- Staple Gun

### Recommended Products:

Reflective/Bubble/Bubble/White - Roll: RDBW48100 (48"x 100')

Open Interior

R-3.5\* Heat Flow Horizontal

### Installation Instructions:

- The Reflectix® Insulation is installed with the "white side" towards the interior of the building.
- Install 1"x 2" furring strips on the inside and perpendicular to the Z girts on 22" centers. Utilize 1 1/4" self-tapping sheet metal screws to secure the furring strips to the Z girts.
- Butt the furring strips together and tape. Staple tape for reinforcement.
- Attach the product using 5/16" staples at approximately 4" intervals.
- Staple the edges of the Reflectix® Reflective/Bubble/Bubble/White product to the furring strips with a 3/4" overlap at the seams.
- Tape the seams with a Reflectix® White Poly Tape (goal is an air-tight, snug seam seal).
- Staple product down the middle of the sheet into the furring strip parallel and centered.

\* Includes thermal resistance of 0.68 interior air film.



## Calculation Disclaimer: All values are calculated based on the “ASHRAE Handbook of Fundamentals”.

### Review These Important Safety Guidelines Prior to Installation:

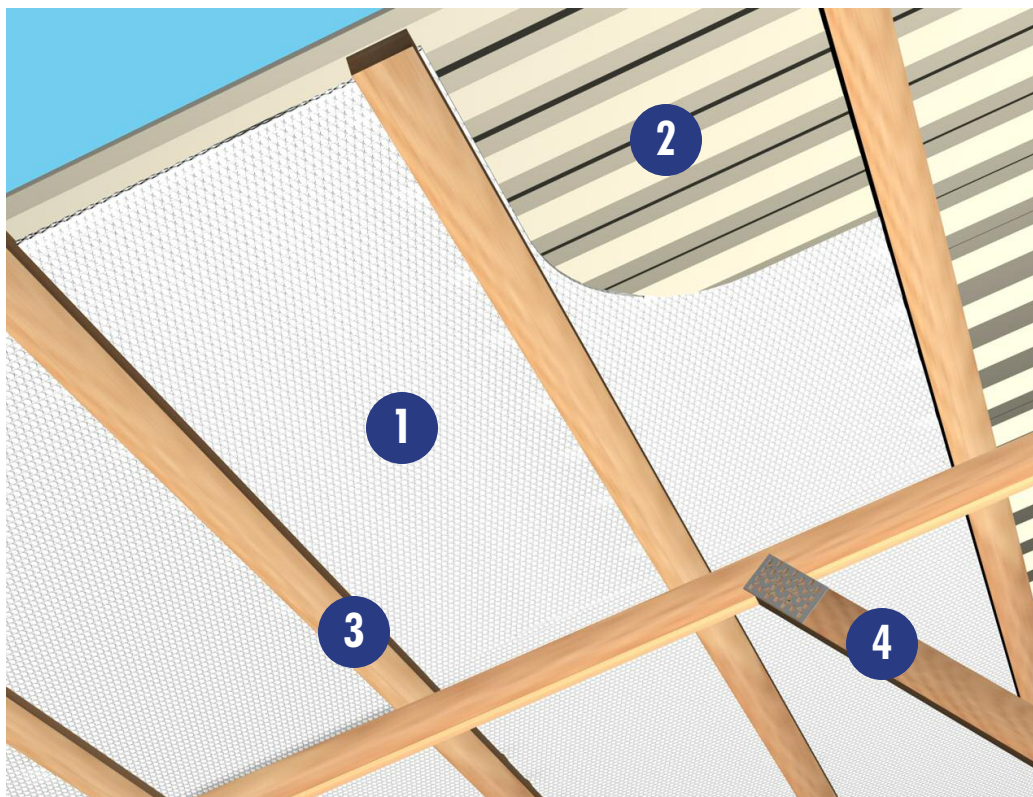
- **ALWAYS** check local building codes before installing Reflectix®.
- **ALWAYS** check the area you are insulating and make any needed repairs. Any worn wiring should be replaced before you begin installing Reflectix®.
- **ALWAYS** make sure work areas are well ventilated and well lighted.
- **ALWAYS** use eye protection when operating a staple gun.
- **ALWAYS** use caution and common sense when using a staple gun. Be aware of where electrical wiring is located. Stapling into a wire can cause severe shock or death. **NEVER** staple into electrical wiring.
- **ALWAYS** be careful when working with large pieces of Reflectix® on windy days.
- When installing Reflectix® on bright sunny days, it is best to wear sun glasses.
- Do not work in areas such as attics when temperatures are too hot.
- Visit our website at [www.reflectixinc.com](http://www.reflectixinc.com) for additional product and installation information.

### Please Note:

The intention of these Installation Instructions and 3-D renderings are for the sole purpose of illustrating the correct location and relative position of the Reflectix® products in specific building assemblies. The correct construction methods and techniques are the responsibility of the installer or contractor. The methods outlined are recommendations on location of the Reflectix® products as a guideline. There are no claims on the part of Reflectix, Inc. that these building assemblies are finite standards or meet building code requirements (as they can vary by region).

# Post and Frame Building / Roof / New

## Reflectix Installation Instructions



1. Reflectix® Insulation
2. Exterior Roof Panel
3. Purlin
4. Truss

### Tools Required:

- Safety Glasses
- Tape Measure
- Utility Knife
- Staple Gun

### Recommended Products:

Reflective/Bubble/Bubble/White - Roll: RDBW48100 (48" x 100')

### Below the Purlins

Open Interior • R-6.4\* Heat Flow Down | R-3.7\* Heat Flow Up

### Above the Purlins

Open Interior • R-3.8\* Heat Flow Down | R-3.5\* Heat Flow Up

### Installation Instructions: (There are 2 options)

#### 1. Metal Roof with Product below Purlin

- The Reflectix® Insulation is installed with the "white side" towards the interior of the building.
- After the trusses are set, run two purlins to make sure the trusses stay true.
- Attach the Reflectix® Reflective/Bubble/Bubble/White product to the first truss with at least 5/16" staples. Temporarily nail a 2" x 4" block over the end of the product to prevent it from pulling away.
- Roll out the product across the top of the trusses, pull tight and staple.
- Run subsequent courses of the product with a 3/4" overlap at the seams.
- Tape the seams with a Reflectix® Foil Tape (goal is an air-tight, snug seam seal).

- Install purlins over the insulation. Nail or screw to the trusses through the product.
- Install the metal roof to the purlins.

## 2. Metal Roof with Product above Purlin (illustration on page 1)

- Per instructions above except install Reflectix® Reflective/Bubble/Bubble/White Insulation after installing the purlins.
- When installing product, insure that a minimum of a 3/4" drape (middle of cavity) is present.

\* Includes thermal resistance of 0.61 UP and 0.92 DOWN for interior air film.

**Calculation Disclaimer: All values are calculated based on the "ASHRAE Handbook of Fundamentals" heat flow up and down.**

### Review These Important Safety Guidelines Prior to Installation:

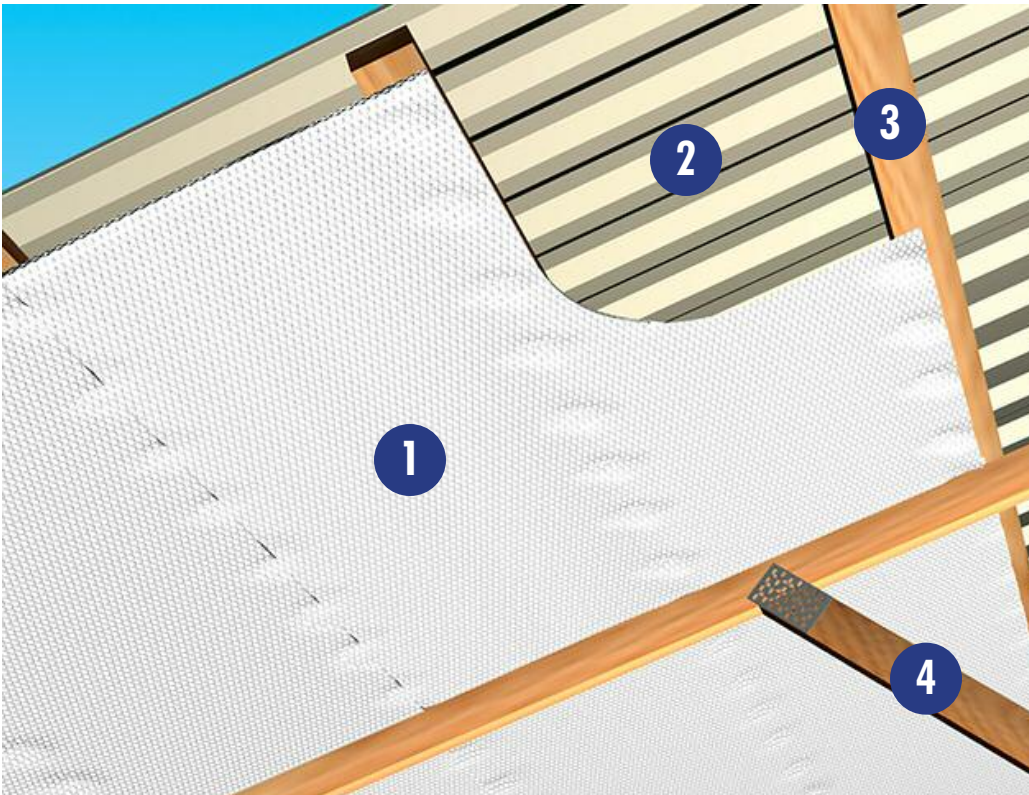
- **ALWAYS** check local building codes before installing Reflectix®.
- **ALWAYS** check the area you are insulating and make any needed repairs. Any worn wiring should be replaced before you begin installing Reflectix®.
- **ALWAYS** make sure work areas are well ventilated and well lighted.
- **ALWAYS** use eye protection when operating a staple gun.
- **ALWAYS** use caution and common sense when using a staple gun. Be aware of where electrical wiring is located. Stapling into a wire can cause severe shock or death. **NEVER** staple into electrical wiring.
- **ALWAYS** be careful when working with large pieces of Reflectix® on windy days.
- When installing Reflectix® on bright sunny days, it is best to wear sun glasses.
- Do not work in areas such as attics when temperatures are too hot.
- Visit our website at [www.reflectixinc.com](http://www.reflectixinc.com) for additional product and installation information.

### Please Note:

The intention of these Installation Instructions and 3-D renderings are for the sole purpose of illustrating the correct location and relative position of the Reflectix® products in specific building assemblies. The correct construction methods and techniques are the responsibility of the installer or contractor. The methods outlined are recommendations on location of the Reflectix® products as a guideline. There are no claims on the part of Reflectix, Inc. that these building assemblies are finite standards or meet building code requirements (as they can vary by region).

# PF Bldg / Roof / Retro / Bottom of Purlins

## Reflectix Installation Instructions



1. Reflectix® Insulation
2. Exterior Roof Panel
3. Purlin
4. Truss

### Tools Required:

- Safety Glasses
- Tape Measure
- Utility Knife
- Staple Gun

### Recommended Products:

Reflective/Bubble/Bubble/White - Roll: RDBW48100 (48" x 100')

### Bottom of the Purlins

Open Interior

R-6.4\* Heat Flow Down | R-3.7\* Heat Flow Up

### Installation Instructions:

- The Reflectix® Insulation is installed with the "white side" towards the interior of the building.
- Inspect the roof area for clutter in buildings where there is no ceiling.
- Measure the distance between the trusses. Many times, the distance will be 4' or less. In some geographical areas, due to snow load, the distance will be as close as 2'.
- Cut pieces of the Reflectix® Reflective/Bubble/Bubble/White Insulation 6" longer than the distance between the ridge pole and the bird's mouth.
- Staple the product to the bottom of the purlins with 5/16" staples, 3" to 4" apart. Turn the edges down and staple to the side of the top cord of the trusses.
- Staple the top of the insulation to the ridge pole and the bottom to the top plate at the wall.
- Tape any butt seams with Reflectix® White Poly Tape. Make sure the tape is applied so that a proper bond occurs.

\* Includes thermal resistance of 0.61 UP and 0.92 DOWN for interior air film.

**Calculation Disclaimer: All values are calculated based on the “ASHRAE Handbook of Fundamentals” heat flow up and down.**

**Review These Important Safety Guidelines Prior to Installation:**

- **ALWAYS** check local building codes before installing Reflectix®.
- **ALWAYS** check the area you are insulating and make any needed repairs. Any worn wiring should be replaced before you begin installing Reflectix®.
- **ALWAYS** make sure work areas are well ventilated and well lighted.
- **ALWAYS** use eye protection when operating a staple gun.
- **ALWAYS** use caution and common sense when using a staple gun. Be aware of where electrical wiring is located. Stapling into a wire can cause severe shock or death. **NEVER** staple into electrical wiring.
- **ALWAYS** be careful when working with large pieces of Reflectix® on windy days.
- When installing Reflectix® on bright sunny days, it is best to wear sun glasses.
- Do not work in areas such as attics when temperatures are too hot.
- Visit our website at [www.reflectixinc.com](http://www.reflectixinc.com) for additional product and installation information.

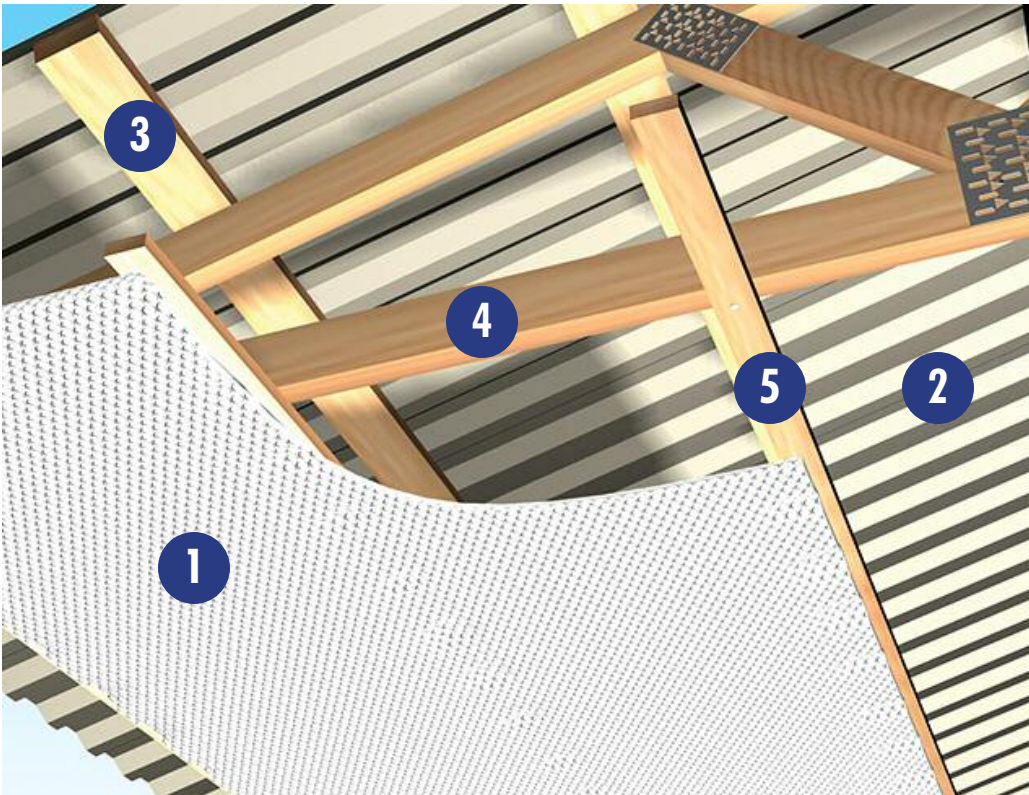
**Please Note:**

The intention of these Installation Instructions and 3-D renderings are for the sole purpose of illustrating the correct location and relative position of the Reflectix® products in specific building assemblies. The correct construction methods and techniques are the responsibility of the installer or contractor. The methods outlined are recommendations on location of the Reflectix® products as a guideline. There are no claims on the part of Reflectix, Inc. that these building assemblies are finite standards or meet building code requirements (as they can vary by region).



# PF Bldg / Roof / Retro / Bottom of Trusses

## Reflectix Installation Instructions



1. Reflectix® Insulation
2. Exterior Roof Panel
3. Purlin
4. Truss
5. 1"x 2" (Nominal) Furring Strip

**Tools Required:**  
Safety Glasses  
Tape Measure  
Utility Knife  
Staple Gun

### Recommended Products:

Reflective/Bubble/Bubble/White - Roll: RDBW48100 (48"x 100')

Bottom of the Trusses

Open Interior

R-6.6\* Heat Flow Down | R-3.0\* Heat Flow Up

### Installation Instructions:

- The Reflectix® Insulation is installed with the "white side" towards the interior of the building.
- Pre-installation inspection - Check the roof area for clutter, water sprinklers, conduit and lights. Sprinkler systems are especially important. All water pipes must be below the Reflectix® Reflective/Bubble/Bubble/White Insulation to prevent the possibility of freezing in the winter.
- Nail 1"x 2" furring strips on the bottom of and perpendicular to the trusses on 22" centers. (Note: When truss spacing is 24" it is recommended to install the Reflectix® Reflective/Bubble/Bubble/White 48" product directly to the bottom cord of the truss.)
- Butt the furring strips together and tape. Staple tape for reinforcement.
- Staple the edges of the Reflectix® to the furring strip with 5/16" staples at approximately 4" intervals. Run subsequent courses of the product with a 3/4" overlap at the seams.

- Tape the seams with a Reflectix® White Poly Tape (goal is an air-tight, snug seam seal).
- Tape any butt seams with Reflectix® White Poly Tape, insure taped seam has a good full continuous bond.
- Staple product down the middle of the sheet into the furring strip above.

\* Includes thermal resistance of 0.61 UP and 0.92 DOWN for interior air film.

**Calculation Disclaimer: All values are calculated based on the “ASHRAE Handbook of Fundamentals” heat flow up and down.**

#### **Review These Important Safety Guidelines Prior to Installation:**

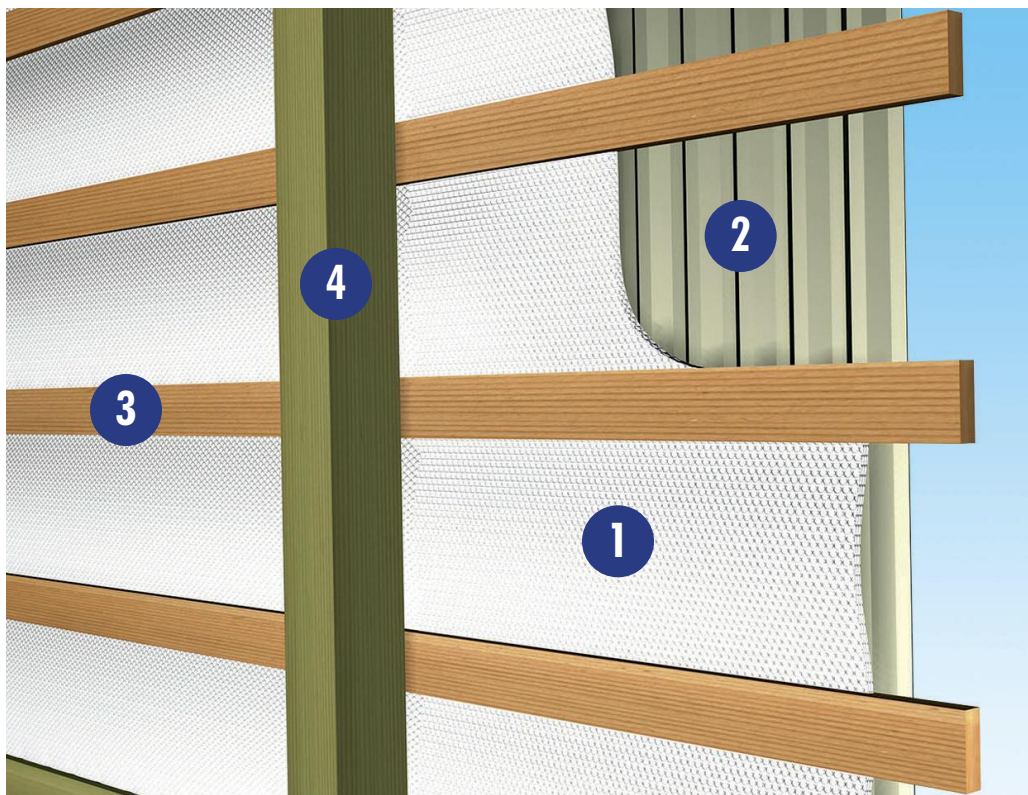
- **ALWAYS** check local building codes before installing Reflectix®.
- **ALWAYS** check the area you are insulating and make any needed repairs. Any worn wiring should be replaced before you begin installing Reflectix®.
- **ALWAYS** make sure work areas are well ventilated and well lighted.
- **ALWAYS** use eye protection when operating a staple gun.
- **ALWAYS** use caution and common sense when using a staple gun. Be aware of where electrical wiring is located. Stapling into a wire can cause severe shock or death. **NEVER** staple into electrical wiring.
- **ALWAYS** be careful when working with large pieces of Reflectix® on windy days.
- When installing Reflectix® on bright sunny days, it is best to wear sun glasses.
- Do not work in areas such as attics when temperatures are too hot.
- Visit our website at [www.reflectixinc.com](http://www.reflectixinc.com) for additional product and installation information.

#### **Please Note:**

The intention of these Installation Instructions and 3-D renderings are for the sole purpose of illustrating the correct location and relative position of the Reflectix® products in specific building assemblies. The correct construction methods and techniques are the responsibility of the installer or contractor. The methods outlined are recommendations on location of the Reflectix® products as a guideline. There are no claims on the part of Reflectix, Inc. that these building assemblies are finite standards or meet building code requirements (as they can vary by region).

# Post Frame Building / Wall / New

## Reflectix Installation Instructions



1. Reflectix® Insulation
2. Exterior Wall Panel
3. Girt
4. Post

### Tools Required:

- Safety Glasses
- Tape Measure
- Utility Knife
- Staple Gun

### Recommended Products:

Reflective/Bubble/Bubble/White - Roll: RDBW48100 (48" x 100')

### Inside the Girts

Open Interior • 4.2\* Heat Flow Horizontal

### Outside the Girts

Open Interior • R-3.7\* Heat Flow Horizontal

### Installation Instructions: (There are 2 options)

#### 1. Product Inside the Girts

- The Reflectix® Insulation is installed with the "white side" towards the interior of the building.
- Attach the product using 5/16" staples at approximately 4" intervals.
- Staple the Reflectix® Reflective/Bubble/Bubble/White product to the outside of the top girt.
- Staple the product to the inside of the remaining girts.
- Tape the seams with a Reflectix® Foil Tape (goal is an air-tight, snug seam seal).

## 2. Product Outside the Girts

- The Reflectix® Insulation is installed with the “white side” towards the interior of the building.
- Attach the product using 5/16” staples at approximately 4” intervals.
- Staple the Reflectix® Reflective/Bubble/Bubble/White product to the outside of the top girt.
- Staple the product to the outside of the remaining girts. Insure there is a drape of at least 3/4” (towards the interior of the building) at the center of each cavity.
- Tape the seams with a Reflectix® Foil Tape (goal is an air-tight, snug seam seal).
- Attach outside panel.

\* Includes thermal resistance of 0.68 interior air film.

**Calculation Disclaimer: All values are calculated based on the “ASHRAE Handbook of Fundamentals”.**

### Review These Important Safety Guidelines Prior to Installation:

- **ALWAYS** check local building codes before installing Reflectix®.
- **ALWAYS** check the area you are insulating and make any needed repairs. Any worn wiring should be replaced before you begin installing Reflectix®.
- **ALWAYS** make sure work areas are well ventilated and well lighted.
- **ALWAYS** use eye protection when operating a staple gun.
- **ALWAYS** use caution and common sense when using a staple gun. Be aware of where electrical wiring is located. Stapling into a wire can cause severe shock or death. **NEVER** staple into electrical wiring.
- **ALWAYS** be careful when working with large pieces of Reflectix® on windy days.
- When installing Reflectix® on bright sunny days, it is best to wear sun glasses.
- Do not work in areas such as attics when temperatures are too hot.
- Visit our website at [www.reflectixinc.com](http://www.reflectixinc.com) for additional product and installation information.

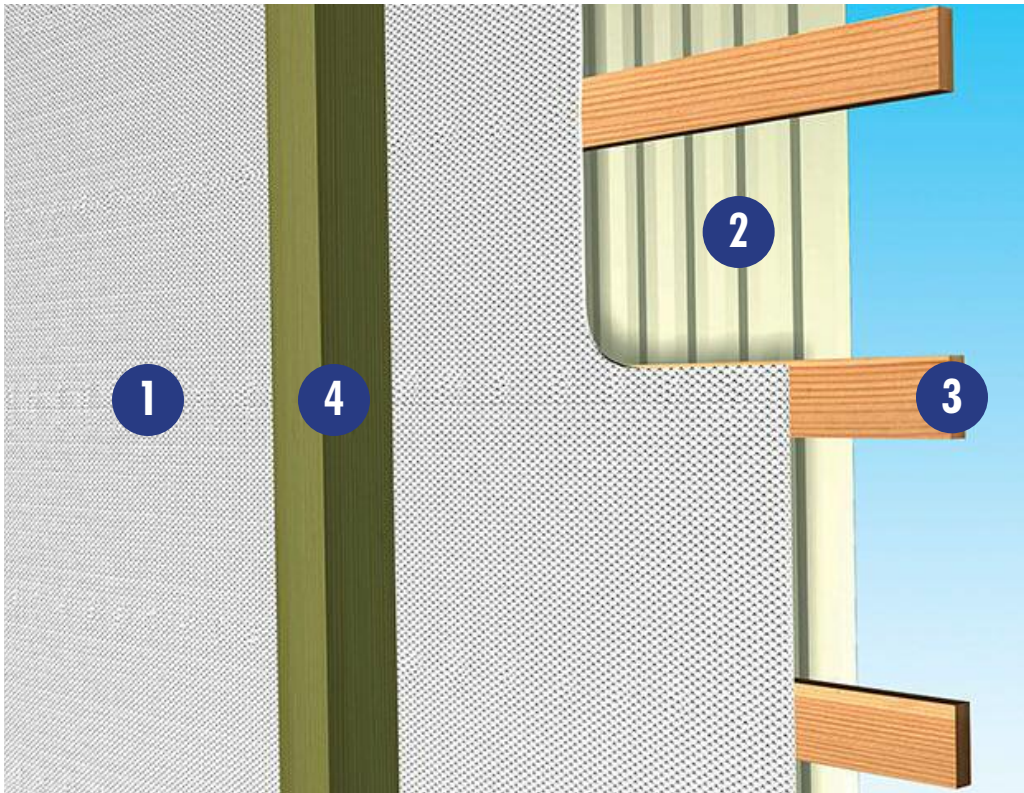
### Please Note:

The intention of these Installation Instructions and 3-D renderings are for the sole purpose of illustrating the correct location and relative position of the Reflectix® products in specific building assemblies. The correct construction methods and techniques are the responsibility of the installer or contractor. The methods outlined are recommendations on location of the Reflectix® products as a guideline. There are no claims on the part of Reflectix, Inc. that these building assemblies are finite standards or meet building code requirements (as they can vary by region).



# Post Frame Building / Wall / Retrofit

## Reflectix Installation Instructions



1. Reflectix® Insulation
2. Exterior Wall Panel
3. Girt
4. Post

### Tools Required:

- Safety Glasses
- Tape Measure
- Utility Knife
- Staple Gun

### Recommended Products:

Reflective/Bubble/Bubble/White - Roll: RDBW48100 (48" x 100')

### Inside the Girts

Open Interior • R-4.2\* Heat Flow Horizontal

### Installation Instructions:

- The Reflectix® Insulation is installed with the "white side" towards the interior of the building.
- Reflectix® Reflective/Bubble/Bubble/White Insulation can be installed either vertically or horizontally.
- Attach the product to the inside of the girts using 5/16" staples at approximately 4" intervals.
- Tape the seams with a Reflectix® White Poly Tape (goal is an air-tight, snug seam seal).

\* Includes thermal resistance of 0.68 interior air film.

Calculation Disclaimer: All values are calculated based on the "ASHRAE Handbook of Fundamentals".



### **Review These Important Safety Guidelines Prior to Installation:**

- **ALWAYS** check local building codes before installing Reflectix®.
- **ALWAYS** check the area you are insulating and make any needed repairs. Any worn wiring should be replaced before you begin installing Reflectix®.
- **ALWAYS** make sure work areas are well ventilated and well lighted.
- **ALWAYS** use eye protection when operating a staple gun.
- **ALWAYS** use caution and common sense when using a staple gun. Be aware of where electrical wiring is located. Stapling into a wire can cause severe shock or death. **NEVER** staple into electrical wiring.
- **ALWAYS** be careful when working with large pieces of Reflectix® on windy days.
- When installing Reflectix® on bright sunny days, it is best to wear sun glasses.
- Do not work in areas such as attics when temperatures are too hot.
- Visit our website at [www.reflectixinc.com](http://www.reflectixinc.com) for additional product and installation information.

### **Please Note:**

The intention of these Installation Instructions and 3-D renderings are for the sole purpose of illustrating the correct location and relative position of the Reflectix® products in specific building assemblies. The correct construction methods and techniques are the responsibility of the installer or contractor. The methods outlined are recommendations on location of the Reflectix® products as a guideline. There are no claims on the part of Reflectix, Inc. that these building assemblies are finite standards or meet building code requirements (as they can vary by region).