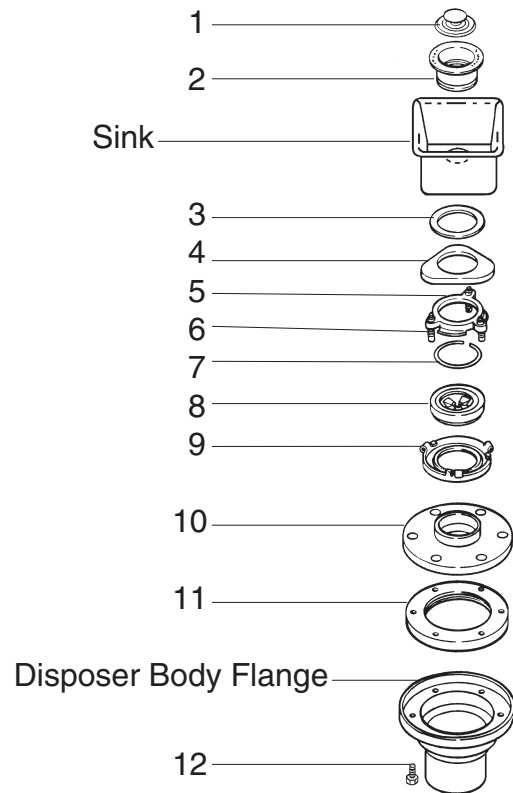


5 SINK FLANGE ASSEMBLY (# 12506)



PART NUMBERS

I.D. No.	Part No.	Qty	Description
1	1876	1	Stopper
2	5170-AC	1	Strainer Flange
3	1160	1	Strainer Flange Gasket
4	5150-E	1	Backup Flange
5	5141	1	Upper Mounting Flange
6	5147	3	Backup Screw
7	5166	1	Retaining Ring
8	1010-A	1	Mounting Gasket
9	5298	1	Body Flange
10	11189	1	Mounting Flange
11	11016	1	Mounting Gasket
12	1491	6	Screw

INSTALLATION (For use with standard 3 1/2 - 4" inch sink openings.)

1. Unscrew the three backup screws (6) until they are flush with the upper mounting flange (5) surface. Pry the retaining ring (7) free from the strainer flange (2) with a screwdriver and separate all mounting assembly parts (2 - 6).
2. Form a 3/4 inch thick ring of top grade oil base putty around the sink opening (use non-hardening putty). Insert the strainer flange (2) into the sink opening and press firmly in place. Clean away any excess putty.
3. From underneath the sink, place the strainer flange gasket (3), backup flange (4) - flat side up, and upper mounting flange (5) over the strainer flange (2) and hold them up to the sink. Fit the retaining ring (7) into the groove on the strainer flange (2) to hold the mounting parts in place.
4. Tighten the three backup screws (6) evenly until the backup flange (4) draws snugly against the underside of the sink and the strainer flange (2) is held securely in place.
5. Place the body flange (9) - lugs upward over the lip of the mounting flange (10) and fit the mounting gasket (8) onto the lip.
6. Place the mounting gasket (11) on the disposer body flange. Secure the adaptor mounting flange (10) to the top of the disposer with six screws (12) provided.
7. Raise the disposer to the upper mounting flange (5) so the body flange is positioned with the lugs to the right of the screws.
8. While supporting the unit, turn the body flange (9) to the right into the mounting flange (5) until the unit hangs freely. Insert the service wrench into the left side of a lug and continue to turn the body flange (9) to the right (approximately one quarter turn) until it locks into position on the upper mounting flange (5).
9. Swivel the unit to align the discharge outlet with the drain trap. (Unit can be turned 360 degrees for easy installation.)