

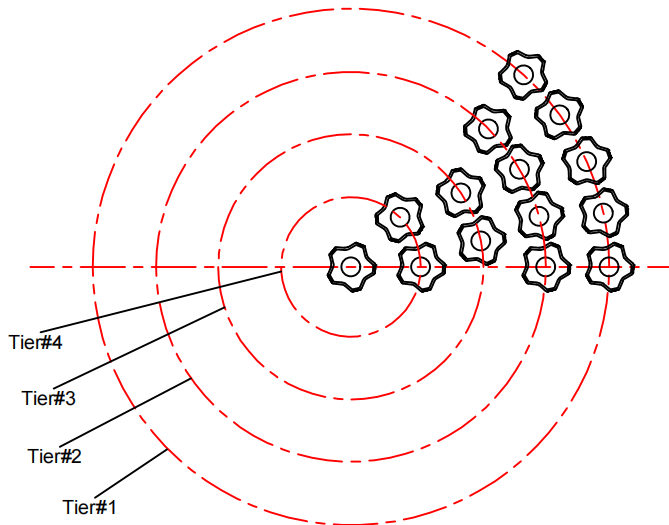
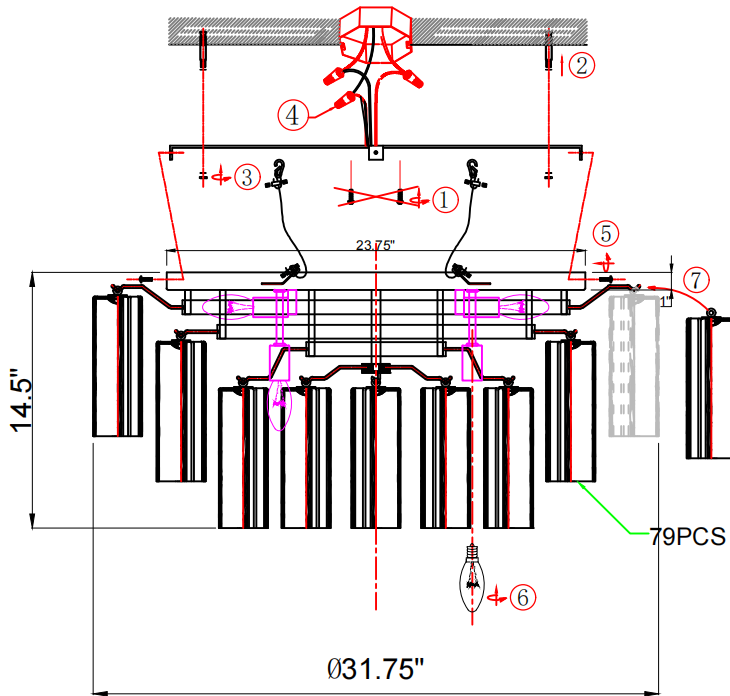
CRYSTORAMA

LIGHTING THE WAY FOR SIXTY YEARS



Crystorama.com

ASSEMBLY INSTRUCTION MODEL ADD-331-CH-CL



Dress the glass from tier #4



All electrical components must be installed by a licensed electrician in accordance with the National Electric Code and the appropriate local electrical codes.



You will need 16 Candelabra Base Bulb 40 Watts Recommended 60 Watts Max. USE LED BULBS FOR EXTENDED USE (This fixture is Damp rated)

How to Install

1. Place the mounting plate over the outlet box and mark four points on the ceiling at the same distance as between the holes on the mounting plate.
2. Drill the holes at the marked points and insert the anchors into it.
3. Attach the mounting plate onto the outlet box and secure with the anchor screws.
4. Hang the canopy onto the mounting bracket by hooking the cable wire into the slots as shown. After the wire connection is made, raise the canopy up to cover the outlet box and secure with the screws.
5. Install recommended bulb into the socket.
7. Starting from the bottom. Dress the glass as illustrated.

Glass Sets

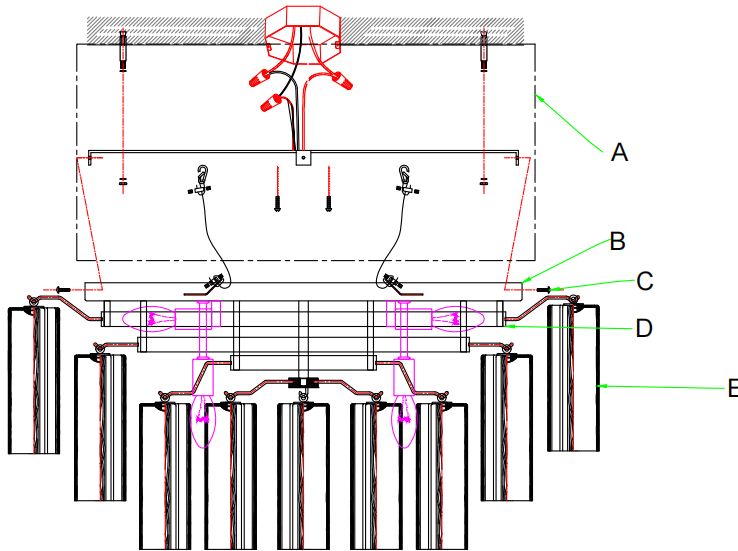
1. 79pcs Clear glass 2 .75x7 .75"

WARNING: This product can expose you to Lead, which is known to the State of California to cause cancer and/or birth defects or reproductive harm. For more information go to www.P65Warnings.ca.gov



PART NUMBER MODEL ADD-331-CH-CL

Part Number



Part Numbers

- A. (1)-Mounting hardware:
 - (1)mounting bracket
 - (3)wire nuts
 - (4)wall anchor/screw
- B. (1)-Canopy,D23.75*H1"
(XBN331CHCAN23.625IN)
- C. (4)-Screws
- D. (1)-Frame
- E. (79)-Clear Glass,D2.75" * H7.75"
(XBN300CHCLGLA7.75IN)