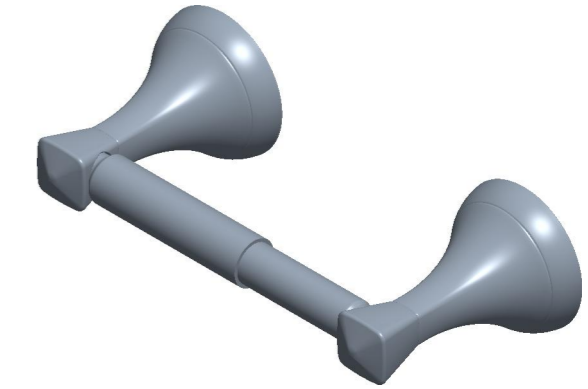
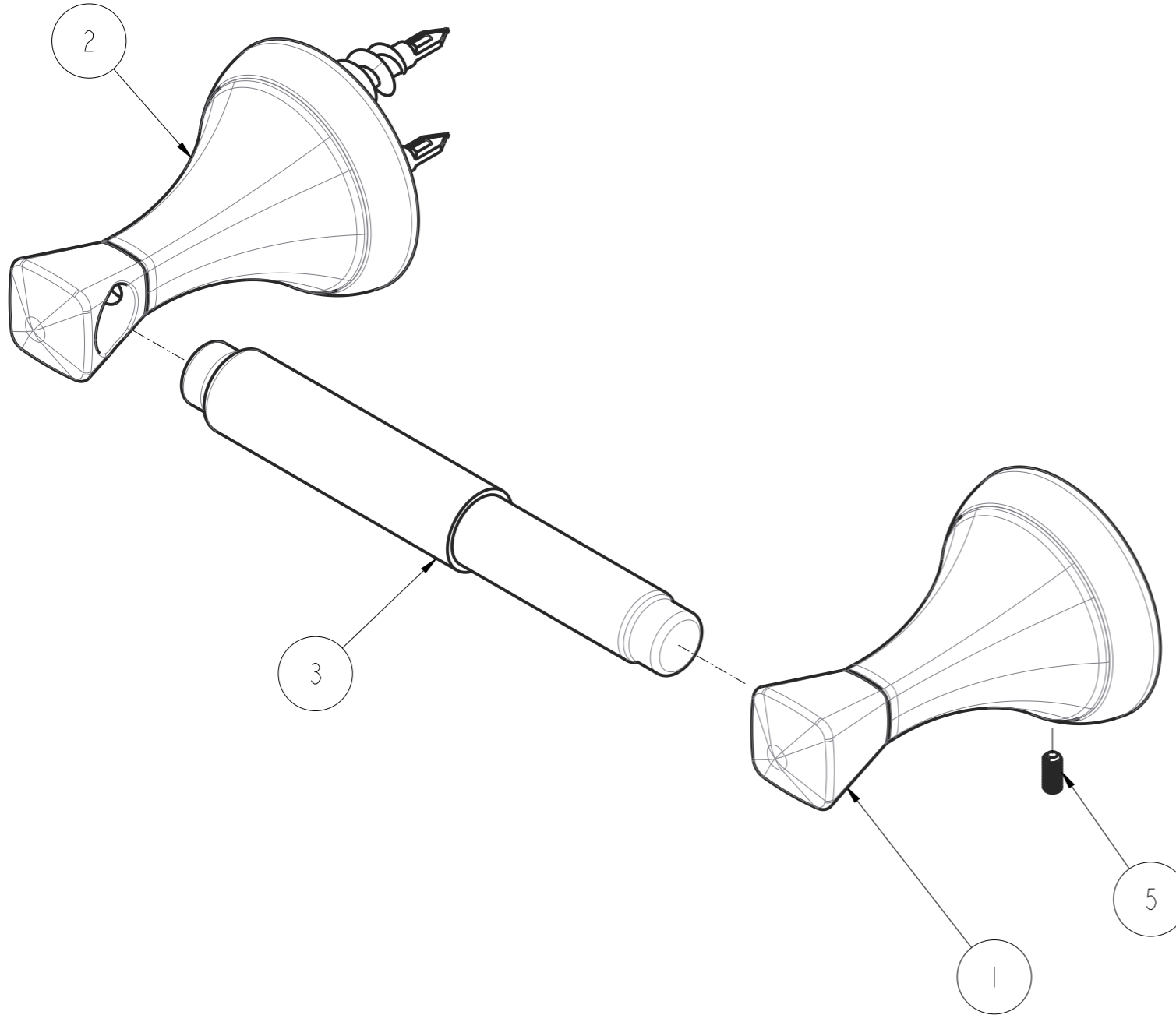


NOTES:

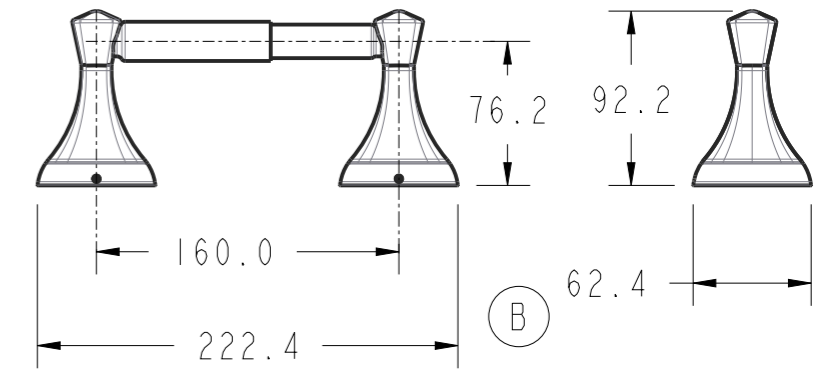
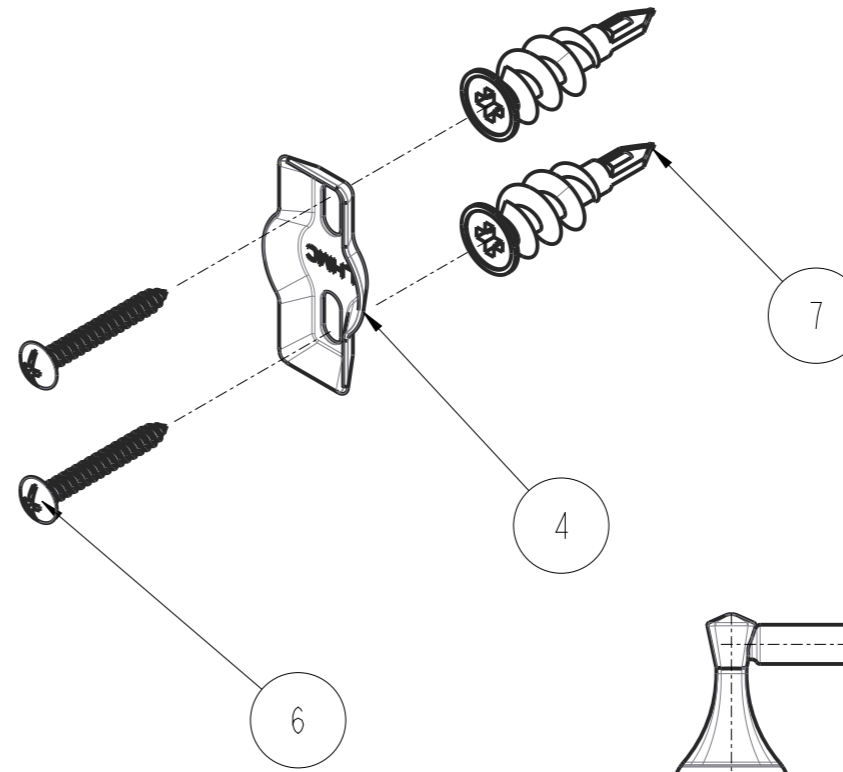
1. DEBURR AND BREAK ALL SHARP EDGES. MEET ULI439.
2. PART SURFACES TO BE FREE OF TOOL MARKS.
3. DO NOT SCALE DRAWING.
4. MATERIAL: SEE COMPONENT DRAWING.
5. FINISH TO PASS LIBERTY HARDWARE DS-700/QC-0034 & ASTM (B117) 24hr.
6. PARTS AND ASSEMBLIES ARE TO MEET OR EXCEED MINIMUM TEST SPECIFICATIONS REQUIRED BY DS-700 & ANSI/BHMA A156.16.
7. BACK OF PRODUCT TO BE MARKED: L H M C © 2021.

REV.	DESCRIPTION	DATE	ENG.
A	INITIAL DRAWING	07/14/21	DSC
B	CORRECTED DIM TO ACTUAL	10-28-21	JD

State: Production
Modified On: 28-Oct-21 07:01:58 AM



SCALE 0.350



SCALE 0.250

ITEM NO.	PART NUMBER	DESCRIPTION	QTY	MATERIAL	WEIGHT EA (g)	DRAWING NUMBER
1	45971R-***	ESATO TB POST RIGHT	1	ZAMACK_3	121.5	45971
2	45971L-***	ESATO TB POST LEFT	1	ZAMACK_3	121.5	45971
3	TBD	SPRING LOADED ROLLER	1	VARIABLE	133.0	NO DWG
4	BHPLT13-ZP	SET SCREW BRACKET - STANDARD	2	STEEL	6.9	14875
5	SMHSC8E-ZP	8-32 X 3/8" HEX SOCKET SET SCREW	2	SUS304	0.7	NO DWG
6	STCTE8N-ZP	#8 X 1-1/4" COMBO TRUSS HEAD TAPPING SCREW	4	STEEL	2.2	NO DWG
7	CP2850798	AUGER ANCHORS	4	NYLON	1.2	35334

NOTICE: PROPRIETARY INFORMATION
THESE DRAWINGS AND SPECIFICATIONS ARE THE PROPERTY OF LIBERTY HARDWARE, MFG CORP. AND ARE NOT TO BE REPRODUCED, COPIED OR USED AS THE BASIS OF MANUFACTURE OR SALE OF APPARATUS AND DEVICES WITHOUT PERMISSION. THESE DRAWINGS AND SPECIFICATIONS CONTAIN COPYRIGHTED INFORMATION THAT IS PROPRIETARY TO LIBERTY HARDWARE AND SHALL NOT BE DIVULGED IN ANY WAY WITHOUT PERMISSION.

	LIBERTY HARDWARE <small>LIBERTY HARDWARE MANUFACTURING CORPORATION 120 Business Park Drive Kingston, Spouton, NC 27007</small>		DWG. SIZE B <small>(11 x 17 in.)</small>
	TOLERANCE <small>MM TOL. UNLESS NOTED</small> X. = ±1. X.X = ±0.5 X.XX = ±0.1 HOLES: ±0.1 ANGLES: ±1.0	Dr. By: <small>DSC</small> Cb. By: ENG. Appd: SCALE: <small>0.500</small> DATE: 07/14/21	DESCRIPTION: ESATO SPRING LOADED TPH ASSEMBLY DWG. NO. 45976 SHEET 1 OF 1 WT. (grams) 432.9 PART NO. TBD REV. B