

RYSE BatteryPack lets you go wire-free with a rechargeable battery add-on for SmartShade units. Simply snap it on and it's ready to go.

⚠ WARNING: This product can expose you to Carbon Black, which is known to the State of California to cause cancer. For more information go to www.P65Warnings.ca.gov.



Due to limited space on the product label, additional information can be found under Terms and Conditions.



Made in China

RYSE Inc.
helloryse.com
20 Camden St.
Suite 200,
Toronto, ON
M5V 1V1
Canada



PCK-000016-11



Wire-Free



Long-Lasting

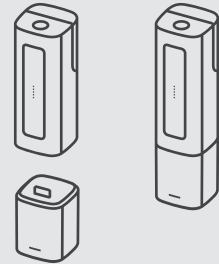


Rechargeable

RYSE BatteryPack

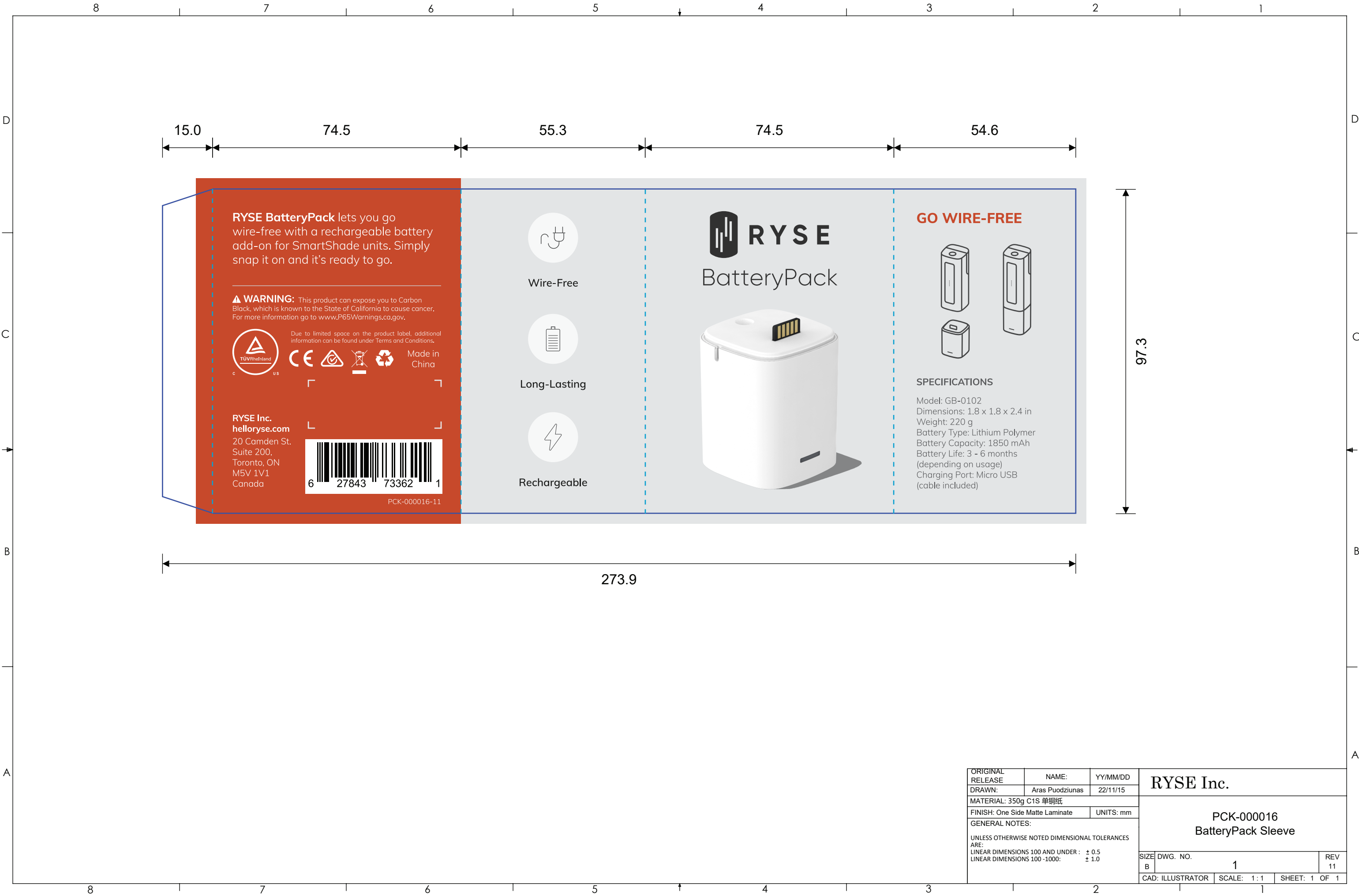


GO WIRE-FREE



SPECIFICATIONS

Model: GB-0102
Dimensions: 1.8 x 1.8 x 2.4 in
Weight: 220 g
Battery Type: Lithium Polymer
Battery Capacity: 1850 mAh
Battery Life: 3 - 6 months
(depending on usage)
Charging Port: Micro USB
(cable included)



ORIGINAL RELEASE		NAME:		YY/MM/DD		RYSE Inc.					
DRAWN:		Aras Puodziunas		22/11/15							
MATERIAL: 350g C1S 单铜纸						PCK-000016 BatteryPack Sleeve					
FINISH: One Side Matte Laminate				UNITS: mm							
GENERAL NOTES:											
UNLESS OTHERWISE NOTED DIMENSIONAL TOLERANCES ARE:											
LINEAR DIMENSIONS 100 AND UNDER : ± 0.5											
LINEAR DIMENSIONS 100 -1000: ± 1.0						SIZE		DWG. NO.		REV	
						B		1		11	
						CAD: ILLUSTRATOR		SCALE: 1 : 1		SHEET: 1 OF 1	