

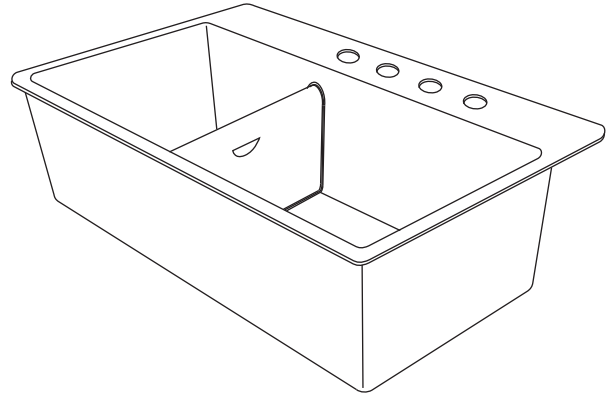
## Divider Features

- Stainless steel divider snaps magnetically into place
- Adjustable and removable
- Creates two separate sealed bowls whenever desired
- Remove divider to wash large trays, pots and pans
- Tip divider to disable magnets and remove
- Divider stores easily under sink

## Divide-A-Bowl Stainless Steel Kitchen Sink With Adjustable and Removable Divider Model GSR33C

## Sink Features

- Stylish 3/4" radius corners enlarge the sink area yet maintain cleanability
- 18 gage type 304 stainless steel
- Sound deadening spray backing and rubber padding
- Overall: 33" wide x 22"
- Bowl: 33-1/2" wide x 16" x 9" deep
- Brushed satin finish



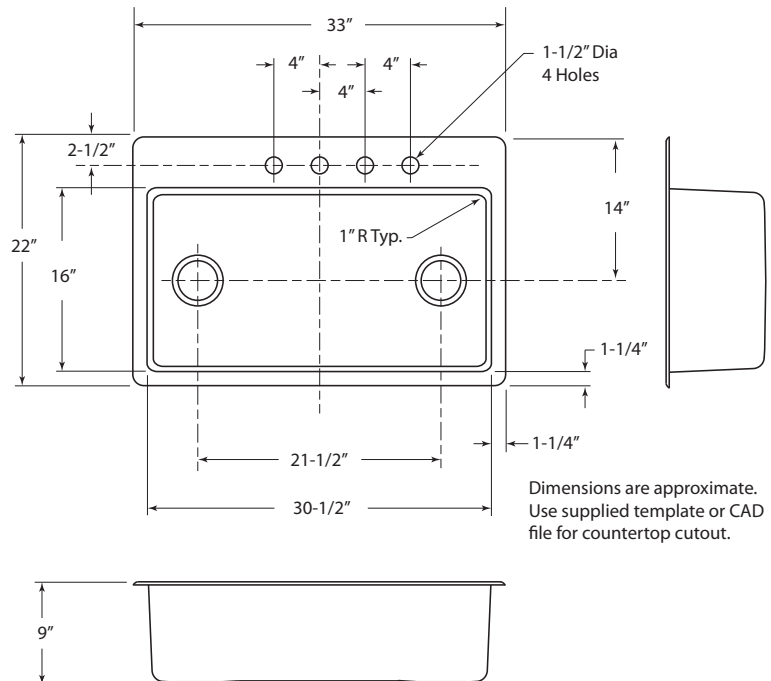
## Codes and Standards

Specified model meets or exceeds:

- ASME A112.19.3-2008
- CSA B45.4-08

## Installation Notes

- For undermount or drop-in installations
- Top mount clips are included
- Drain openings are standard 3-1/2" diameter
- Cardboard template for drop-in installations is included
- CAD file for undermount countertop cutouts is available at [www.giagni.com](http://www.giagni.com)
- Minimum cabinet size: 36"



## Warranty

Sink: Limited lifetime. Divider: Limited five year. Warranties are for residential applications extended to the original purchaser or owner covering defects in material and workmanship.

Giagni reserves the right to make specification and pricing changes without notice or obligation, and to change or discontinue models and finishes