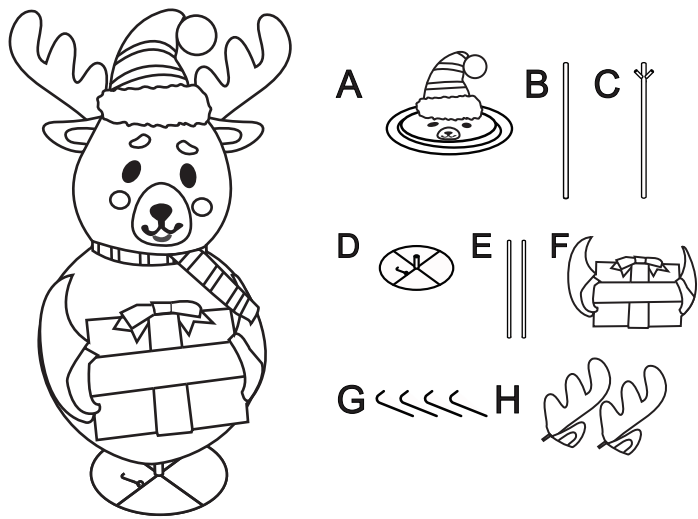


Assembly Instructions

1. Diagram of Parts

Remove all components from the box and lay flat on the floor.



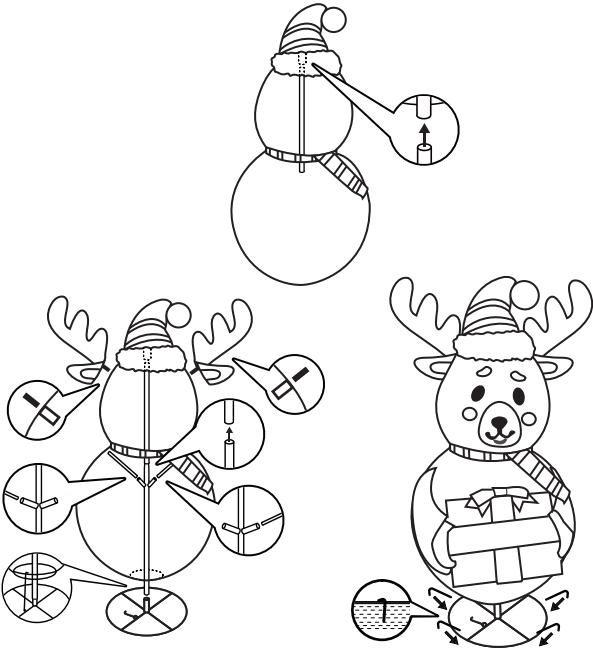
ITEM	DESCRIPTION	QUANTITY
A	Collapsible Reindeer	1
B	Upper Support Pole	1
C	Lower Support Pole	1
D	Round Base Stand	1
E	Hand Support Poles	2
F	Hands	1
G	Ground Stakes	4
H	Reindeer Ears	2

2. Securing the Reindeer to the Upper Support Pole

Insert the connecting rod on the bottom of the Collapsible Reindeer (A) into the top of the Upper Support Pole (B).

3. Assembling the Poles and Hands

First, insert the Lower Support Pole (C) through the circle at the bottom of the Collapsible Reindeer (A) onto the Round Base Stand (D) with the tapered end up. Second, insert the Upper Support Pole (B) on top of the Lower Support Pole (C). Third, insert the Hand Support Poles (E) onto the V shape of the Lower Support Pole (C) from the sides of the body of the Collapsible Reindeer (A). Then, insert the Hands (F) onto the Hand Support Poles (E) and insert the Reindeer Ears (H) onto the head.



4. Securing the Reindeer to the Round Base Stand and Ground

Clip the hook at the Round Base Stand (D) onto the bottom of Collapsible Reindeer (A). Place the Ground Stakes (G) over the metal frame of the Round Base Stand (D) at four points then into the ground.

WARNING: Risk of fire, personal injury and electric shock.

1. Make sure light set is not connected to power before starting.
2. Keep wires clear of being pinched or cut during assembly, installation, or use. Discard product with cut wire insulation.
3. Do not press or grasp bulbs during assembly or installation.
4. Watch for bulbs that may have broken if parts shifted in transit.
5. This product is not a toy; this product is for adult use only. It should not be played with or placed where children can reach it.
6. Make sure stakes are clear of underground sprinkler, telephone, and power lines before starting.

7. Please read all instructions and warnings included with this product before using.

If lights do not work:

- a. Make sure there is power to the outlet and the product is plugged in.
- b. Make sure the cord is well connected to the adapter.
- c. If plugged into a GFCI outlet or GFCI-protected circuit, check the rest of the GFCI to make sure it did not trip. Discard product if GFCI repeatedly trips.



Instruction Manual For indoor and outdoor use

3FT Tinsel LED Collapsible Reindeer Retain carton for storage purposes

IMPORTANT: Please read this manual carefully before assembly and save it for reference.

IMPORTANT SAFETY INSTRUCTIONS

When using electrical products, basic precautions should always be followed including the following:

a) READ AND FOLLOW ALL SAFETY INSTRUCTIONS.

- (b) Do not use seasonal products outdoors unless marked suitable for indoor and outdoor use. When products are used in applications, connect the product to a Ground Fault Circuit Interrupting (GFCI) outlet. If one is not provided, contact a qualified electrician for proper installation.
- (c) This seasonal-use product is not intended for permanent installation or use.
- (d) Do not mount or place near gas or electric heaters, fireplaces, candles, or other similar sources of heat.
- (e) Do not secure wiring of the product with staples or nails, or place on sharp hooks or nails.
- (f) Do not let lamps rest on the supply cord or any wire.
- (g) Unplug the products when leaving the house, or when retiring for the night, or if left unattended.
- (h) This is an electric product -- not a toy! To avoid risk of fire, burns, personal injury and electric shock, it should not be played with or placed where small children can reach it.
- (i) Do not use this product for anything other than its intended use.
- (j) Do not hang ornaments or other objects from cords, wire, or light strings.
- (k) Do not close doors or windows on the product or extension cord as this may damage the wire installation.
- (l) Do not cover the product with cloth, paper or any material not part of the product when used.
- (m) This product is equipped with push-in type lamps. Do not twist lamps.
- (n) Read and follow all instructions that are on the product or provided with the product.

SAVE THESE USE AND CARE INSTRUCTIONS

- (a) Before using or reusing, inspect the product carefully. Discard any product that has cut, damaged or frayed wire installation or cords, crack in the lamp holders or enclosures, loose connections, or exposed copper wire.
- (b) When storing the product, carefully remove the product from wherever it is placed, including trees, branches, or bushes, to avoid any undue strain or stress on the product conductors, connections, and wires.
- (c) When not in use, store neatly in a cool, dry location protected from sunlight.

**JOYIN INC.
TEMPE, AZ, 85284, USA
MADE IN CHINA**