



Color Pine Wood Barn Door - Frame

Installation Manual

80in
84in



SAFETY PRECAUTIONS

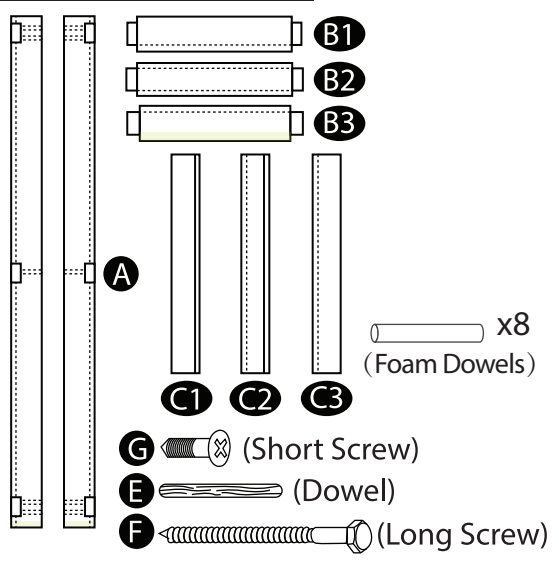
!CAUTION!

- Power tools can cause serious damage if not professionally used. Safety gear must be worn before installation to prevent unexpected injuries.
- Pick an area free of hazardous condition before you start on the project. Please use tools and power tools responsibly any loss of control and accident deaths may occur due to abuse of tools.
- Big objects required in this project are needed to be carefully and responsibly moved. Be sure to wear safety gloves and shoes to prevent any serious injury.
- Be extremely careful to not put any parts of your body against a moving part of the hardware. This may cause bruising, punctures, and other results of injuries when for example when fingers are caught in the closing area of the doors.
- Precautions should be taken when opening or closing the door(s). Handles should be used when attempting to slide the door(s). Always keep you and children aware and safe from any unexpected situations.
- Any extreme uncontrolled pressure opening or closing the door(s) can damage the hardware gradually. Use handle(s) to open and close the door(s) with care at all times.


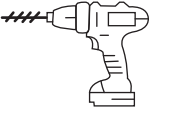

HARDWARE INCLUDED

Please check that you have the correct quantity of hardware before installation.
Different door sizes comes with different quantity of hardware.

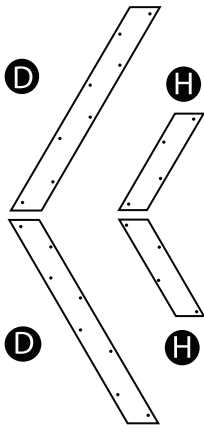
Main Components



Tools Needed


Rubber Mallet

Drill or Phillip Screw Driver


Decorative Panels



Checklist for items you should have for each door size.

Size	A	B1	B2	B3	C1	C2	C3	E	F	G
20in	2	1	1	1	2	2	2	10	10	64
22in	2	1	1	1	2	2	2	10	10	64
24in	2	1	1	1	2	4	2	10	10	64
26in	2	1	1	1	2	4	2	10	10	64
28in	2	1	1	1	2	6	2	10	10	64
30in	2	1	1	1	2	6	2	10	10	64
32in	2	1	1	1	2	6	2	10	10	64
34in	2	1	1	1	2	8	2	10	10	64
36in	2	1	1	1	2	8	2	10	10	64
38in	2	1	1	1	2	10	2	10	10	64
40in	2	1	1	1	2	10	2	10	10	64
42in	2	1	1	1	2	12	2	10	10	64
44in	2	1	1	1	2	12	2	10	10	64
46in	2	1	1	1	2	14	2	10	10	64
48in	2	1	1	1	2	14	2	10	10	64
54in	2	1	1	1	2	16	2	10	10	64
60in	2	1	1	1	2	20	2	10	10	64

NOTICE

G Screws

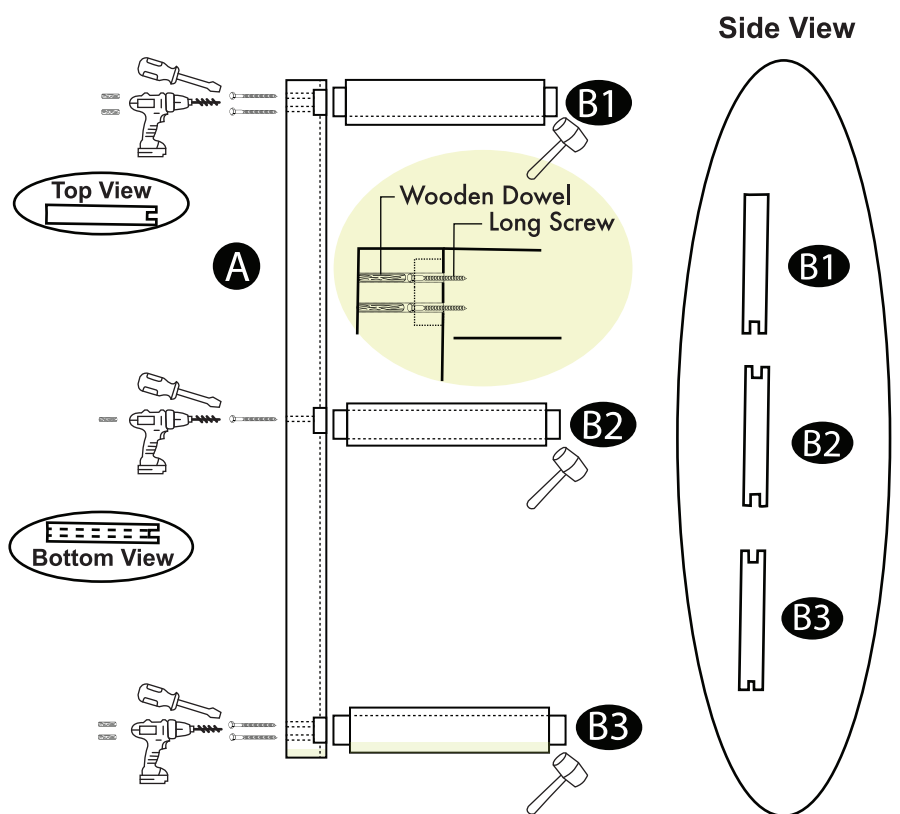
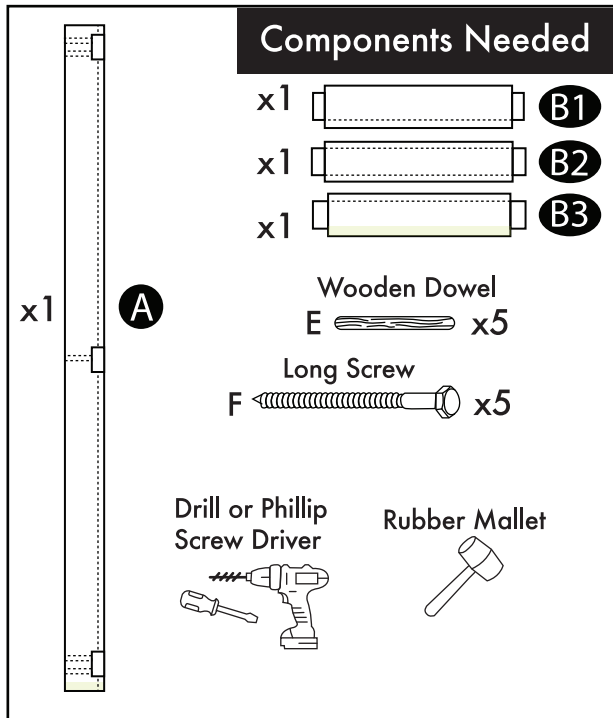
This hardware may come with more than needed. You can use the screws according to your door design that you have ordered.

Please check list below for the panels you need to build your door design.

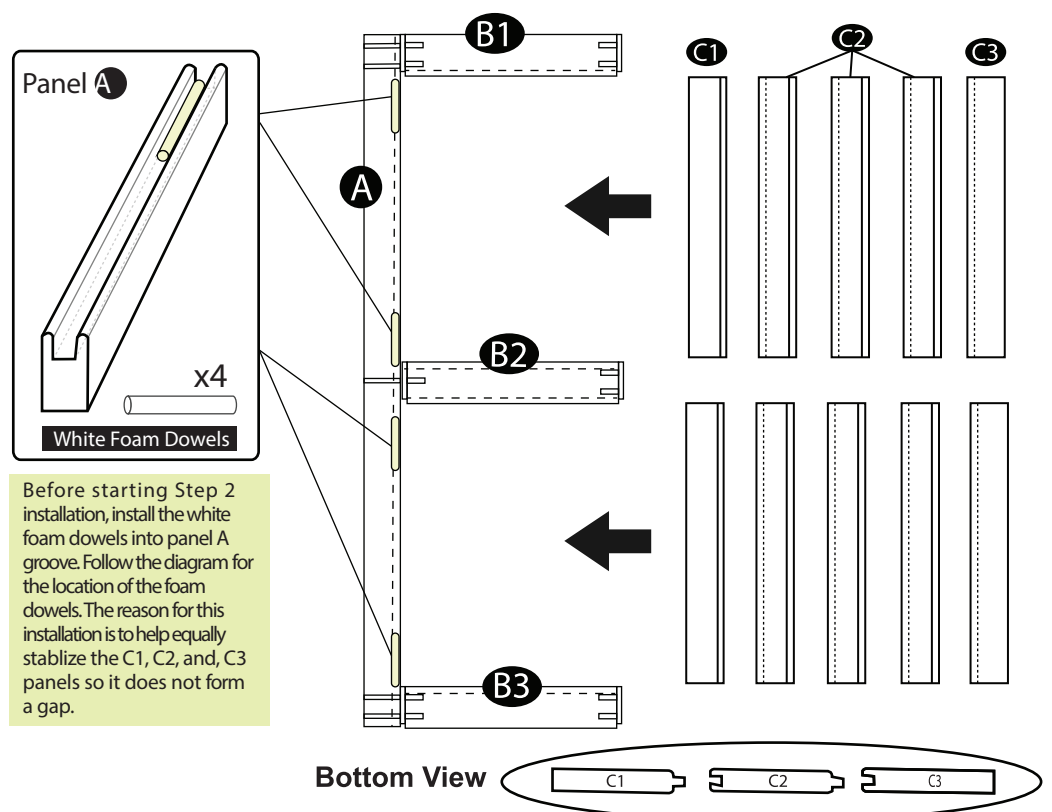
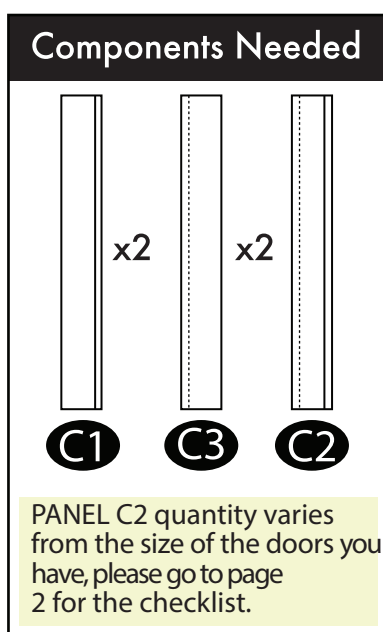
Door Design	D	H
Classic	0	0
Single X	2	4
Double X	4	8
Left Arrow	4	0
Right Arrow	4	0

INSTRUCTIONS

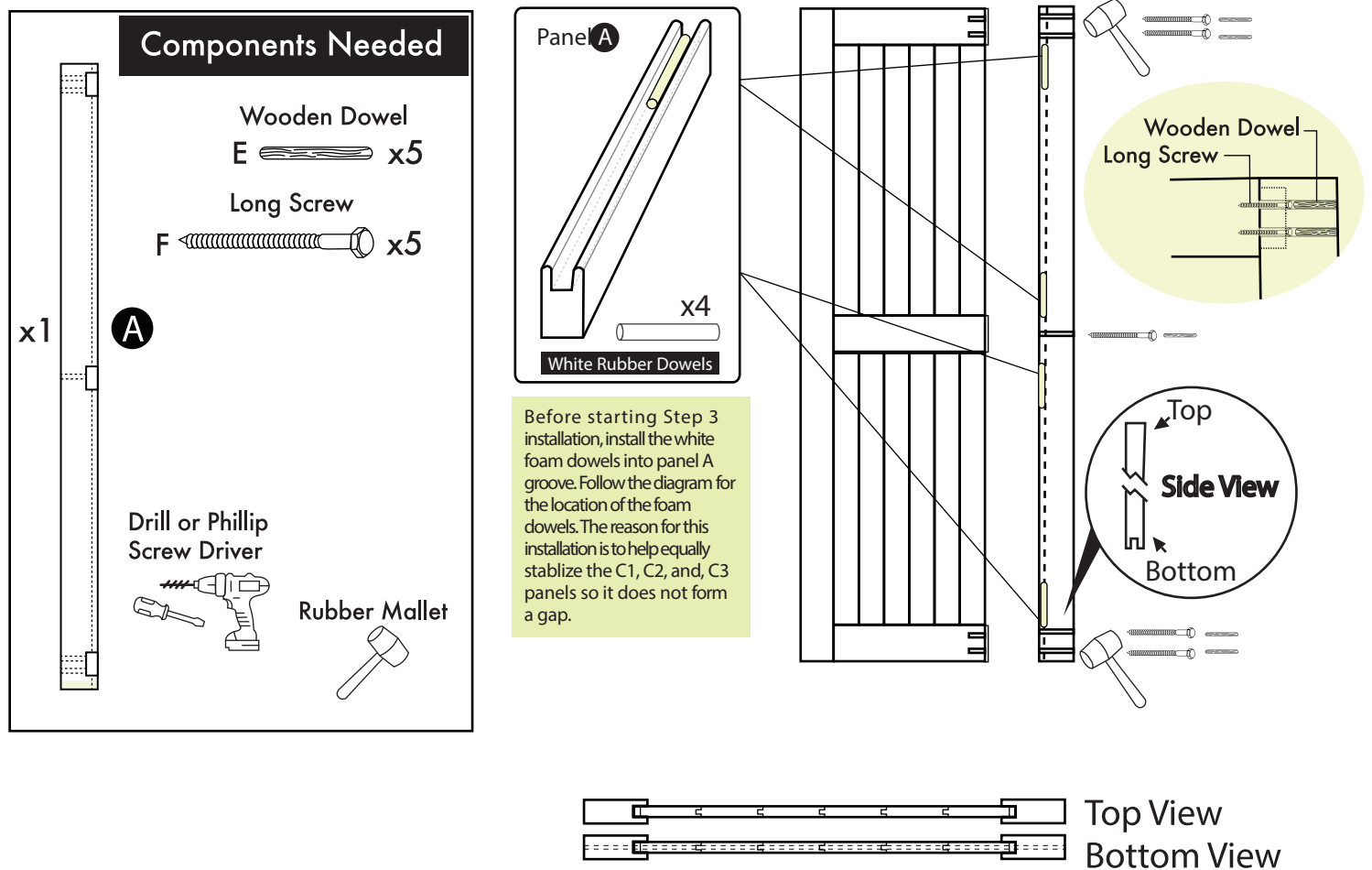
STEP 1



STEP 2



STEP 3



If you order the H design, your installation is complete!

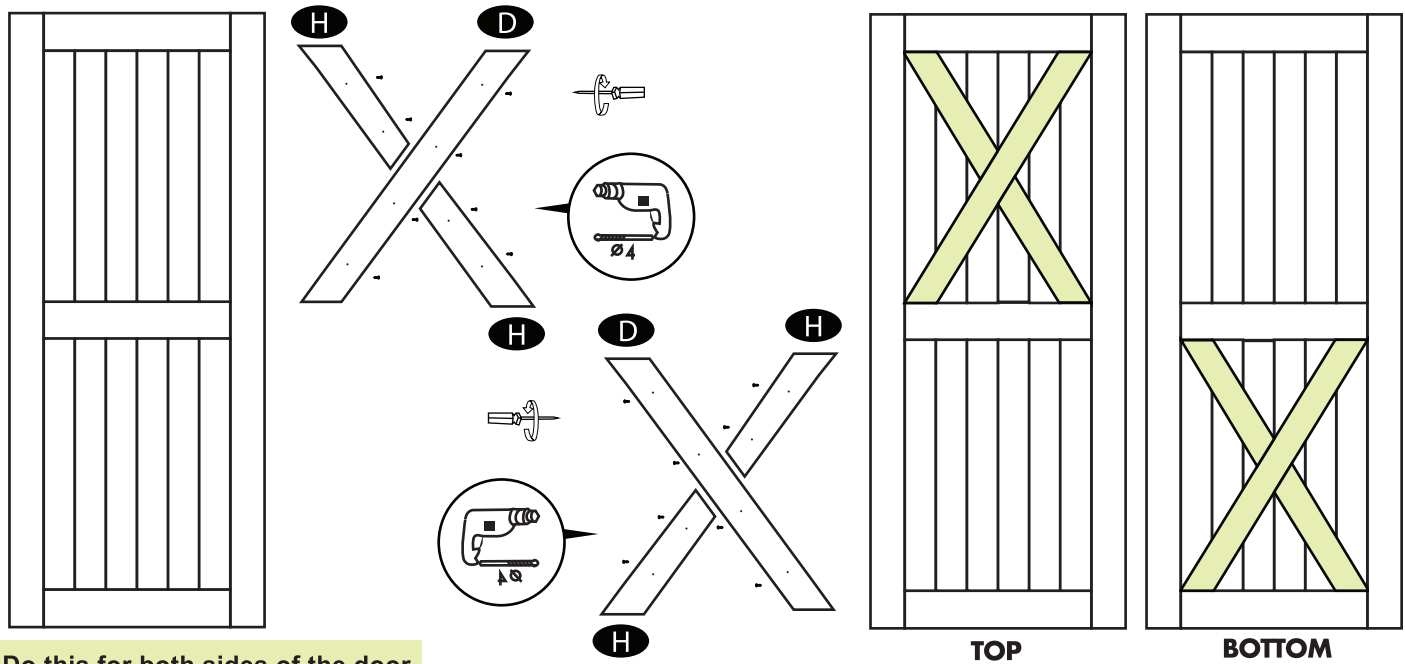
NOTICE

But if you order other designs besides H,
please continue to page 5.

Before installing the decorative panels make sure to differentiate the top and the bottom of the door(s). That way you can place the panels, and position it in the desired design.

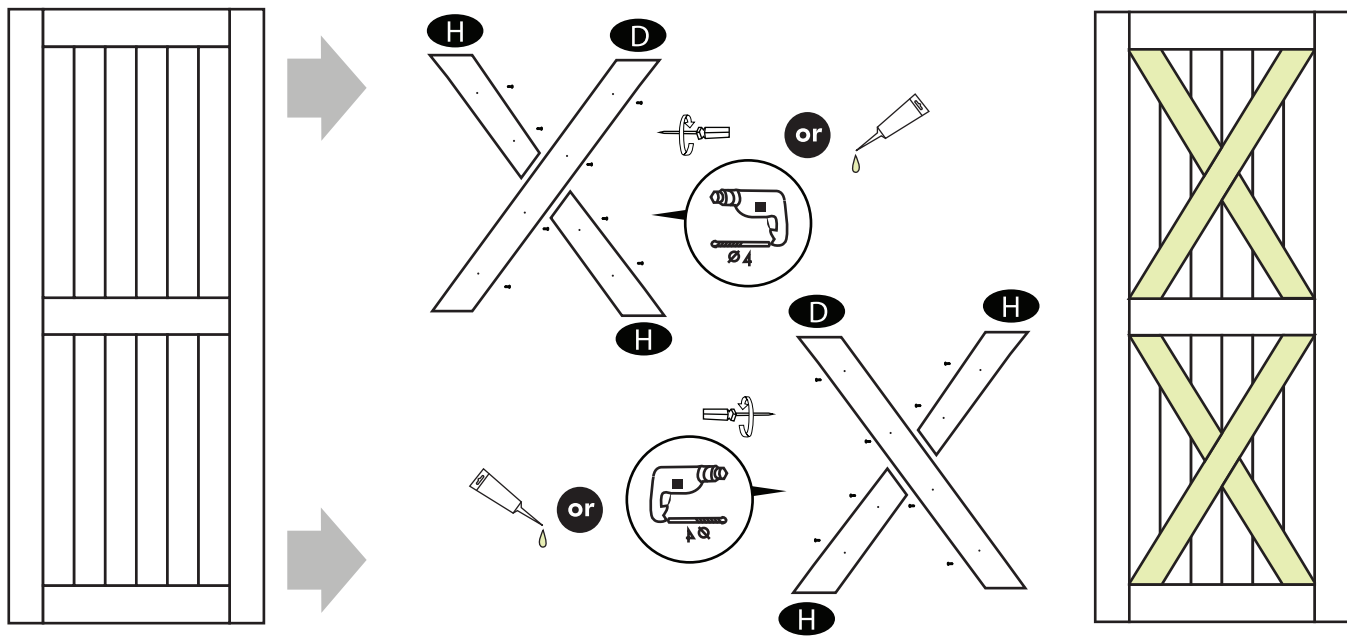
Single X Door Design

You may follow the diagram below by using the screws included or use your wood glue to get a flawless finish.



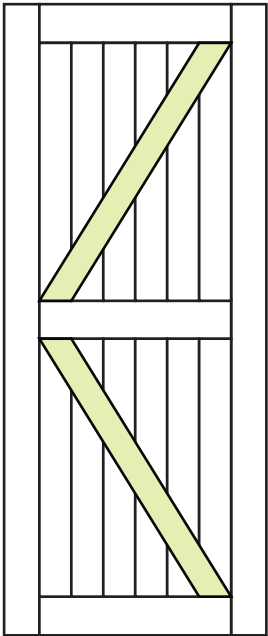
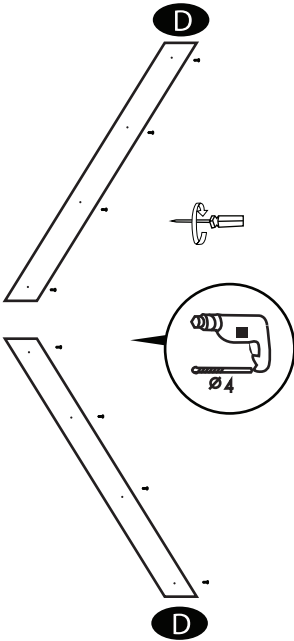
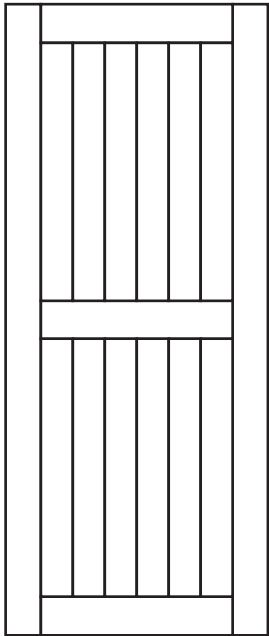
Double X Door Design

You may follow the diagram below by using the screws included or use your wood glue to get a flawless finish.



Left Arrow Door Design

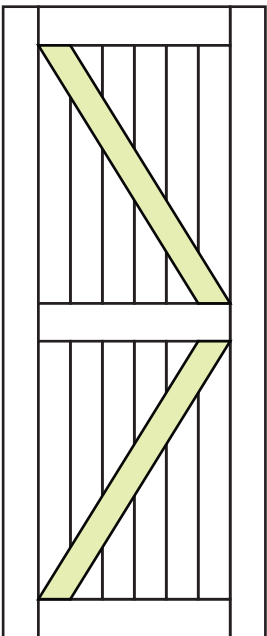
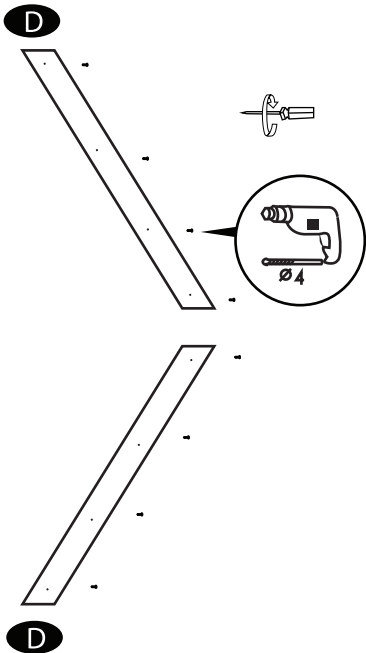
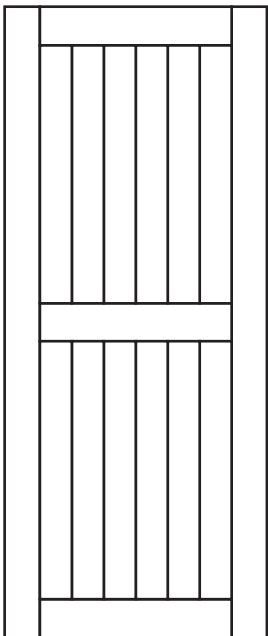
You may follow the diagram below by using the screws included or use your wood glue to get a flawless finish.



Do this for both sides of the door.

Right Arrow Door Design

You may follow the diagram below by using the screws included or use your wood glue to get a flawless finish.



Do this for both sides of the door.

YOUR INSTALLATION IS COMPLETE!



SLIDING HARDWARE / BARN DOORS

High Quality • Exquisite Design • Outstanding Services

ABOUT US

At Homacer, our goal is to provide the finest sliding barn door hardware products and services for our valued customers. We keep polishing our products to make their quality better, prices lower and installation easier. We make it possible for you to get everything you need from us when you think about installing sliding barn doors.

CONTACT US

Bulk Membership Program

To learn more about bulk / dropship order program you may contact us at

Office #: 1(770)-559-5849

Website: www.homacer.com/pages/membership-program

Email us: sales@homacer.com

CUSTOMER SERVICE TECH SUPPORT

Office #: 1(770) 864-5437

Website: www.homacer.com

Email us: info@homacer.com

LOCATION

1885 Beaver Ridge Cir, Ste A
Norcross, GA 30071

For additional hardware and accessories such as floor guide, soft close, and door handles, they can all be found on our website at www.homacer.com if you have any other inquiries you can always contact us through the phone or emails.