



## USER'S MANUAL/MANUEL DE L'UTILISATEUR

**EP25435US**

Electric Barbecue Grill / Barbecue Électrique

THIS INSTRUCTION BOOKLET CONTAINS **IMPORTANT** SAFETY INFORMATION. PLEASE READ AND KEEP FOR FUTURE REFERENCE.

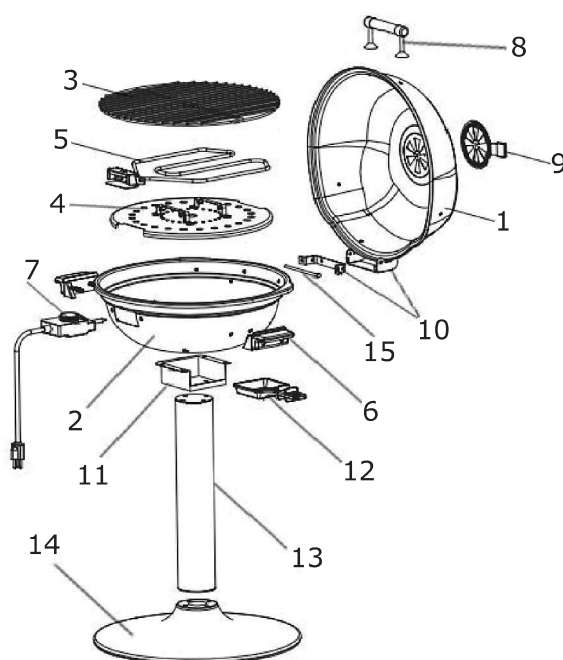
## Electric Barbecue Grill Parts

---

**1) IMPORTANT:** Your Electric Barbecue Grill has been shipped with the components shown below. Check everything carefully before assembly or use. If any part is missing or damaged, do not use this product and contact the after-sales service center.

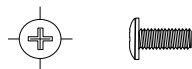
### 2) PRODUCT DIAGRAM

1. Lid
2. Bowl
3. Cooking Grill
4. Heat Reflector Plate
5. Heating Element
6. Handle (x2)
7. Temperature Control
8. Lid Handle
9. Air Vent
10. Hinge Bracket
11. Connection Part
12. Drip Tray
13. Pillar
14. Base
15. Locking Pin

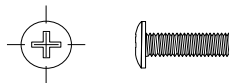


### 3) SCREWS AND WASHER COMPONENTS

17. Small Screw M5X12 (7 pcs)



18. Medium Screw M6X20 (13 pcs)



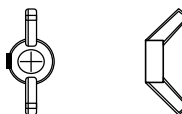
19. Long Screw M6X45 (4 pcs)



20. Small Wing Nut M5 (6 pcs)



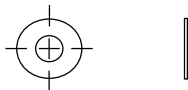
21. Large Wing Nut M6 (11 pcs)



22. Lock Washer (27 pcs)



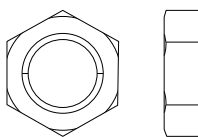
23. Flat Washer (27 pcs)



24. Locking Pin M5\*123 (1 pcs)



25. Flange Nut (2 pcs)



## Assembly Instructions

---

**NOTE:** Tighten all connections by hand first. Once assembly is complete, tighten all connections fully.

### Step 1 – Attach Pillar to Base

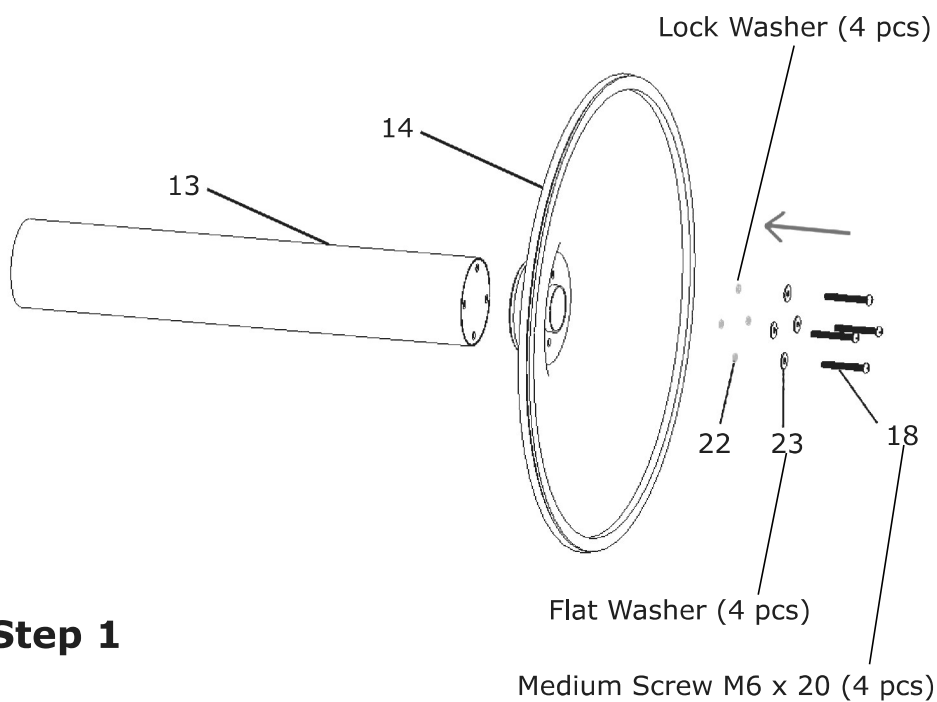
Hardware: M6X20 Medium Screw – 4pcs

Lock Washer – 4pcs

Flat Washer – 4pcs

Unscrew and put aside the four (4) M6X20 medium screws on one end of the pillar.

Add four (4) flat washers on the end of the pillar, then put the pillar on the base and screw the base to the pillar using the four (4) M6X20 medium screws previously removed.



### Step 1

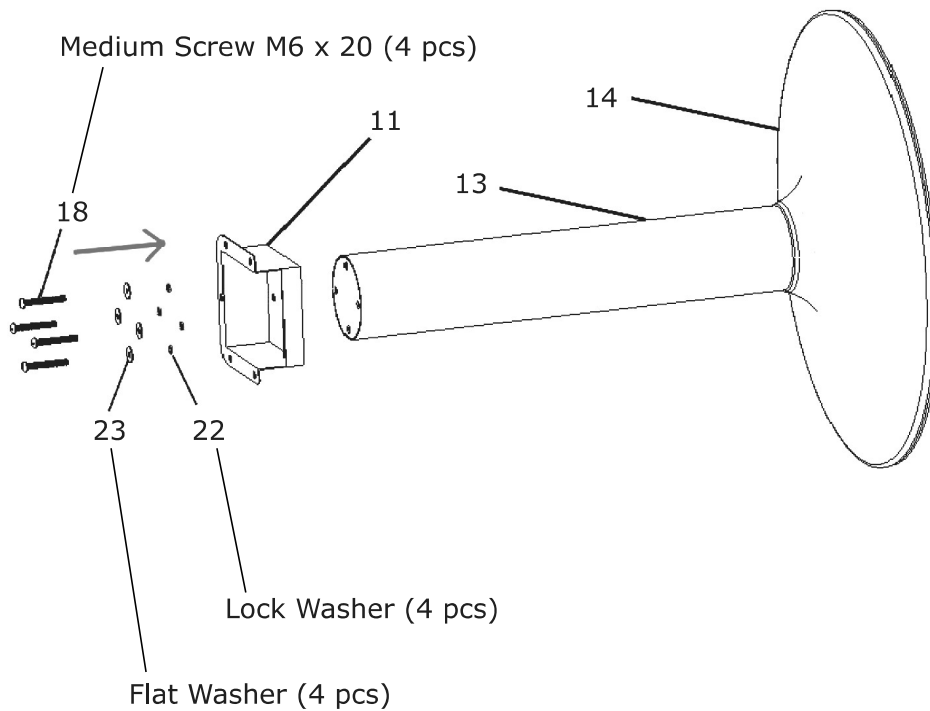
## Step 2 - Connection Part

Hardware: M6X20 Medium Screw – 4pcs

Lock Washer – 4pcs

Flat Washer – 4pcs

Unscrew and put aside the four (4) medium screws M6X20 on the other end of the pillar. Align the pillar to the bottom of the connection part, then screw the pillar to the bottom of the connection part using the four (4) M6X20 screws previously removed.



## Step 2

### Step 3 – Attach the Bowl

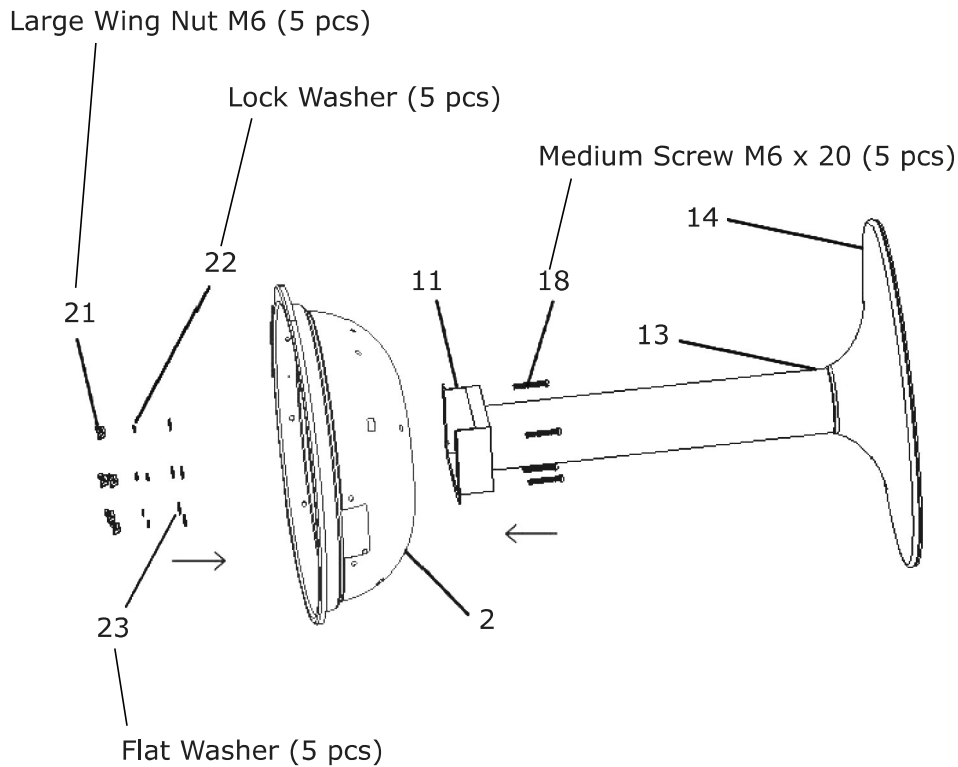
Hardware: M6X20 Medium Screw – 5pcs

M6 Large Wing Nut – 5pcs

Lock Washer – 5pcs

Flat Washer – 5pcs

Place the assembled base on flat ground. Unscrew and put aside the five (5) large wing nuts M6 on the top connection part. Place the bowl on the top of the connection part and affix the bowl to the connection part using the five (5) M6 medium wing nuts previously removed.



### Step 3

## Step 4 - Bowl Handles

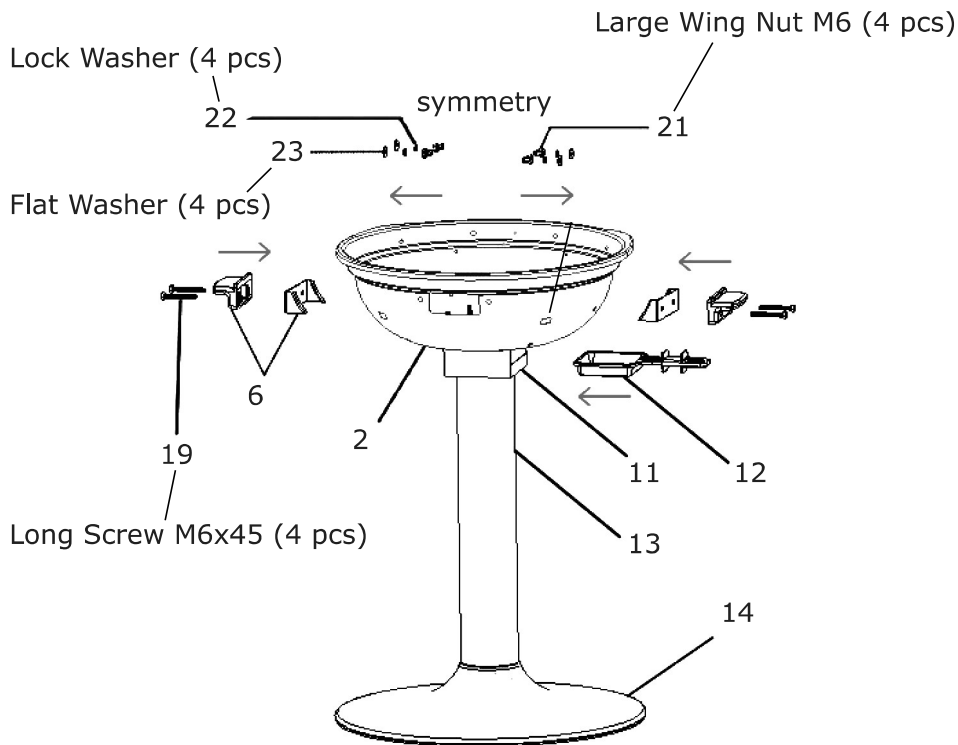
Hardware: M6 Large Wing Nut – 4pcs

Lock Washer – 4pcs

Flat Washer – 4pcs

Long Screw M6 x 45-4pcs

Unscrew the two (2) M6 large wing nuts from each of the two (2) handles with four long screws M6 x 45 and put aside. Affix the two (2) handles to either side of the bowl by using the M6 large wing nuts previously removed.



## Step 4

## Step 5 – Bowl Hinge Bracket

Hardware: M5X12 Small Screw – 2pcs

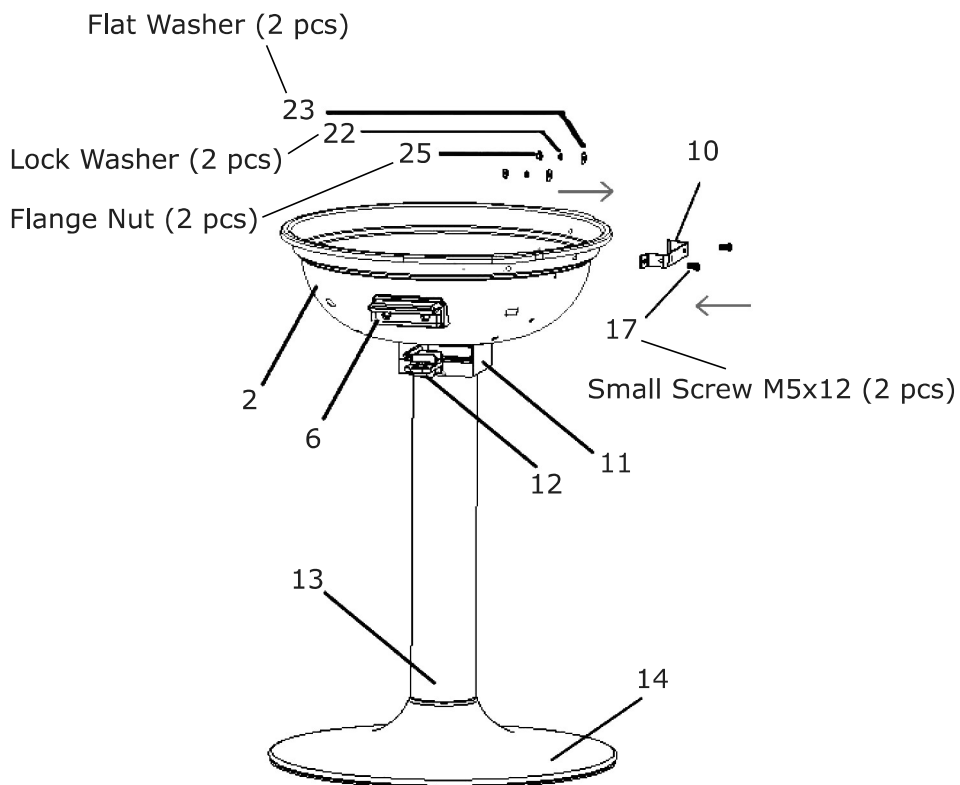
Flange Nut – 2pcs

Lock Washer – 2pcs

Flat Washer – 2pcs

Unscrew the two(2) Flange nuts M5 from the the hinge bracket and put aside. Use two(2) M5X12 small screws and put them through the holes in the bowl. Affix the hinge bracket to the bowl using the two(2) Flange nuts M5 previously removed.

## Step 5

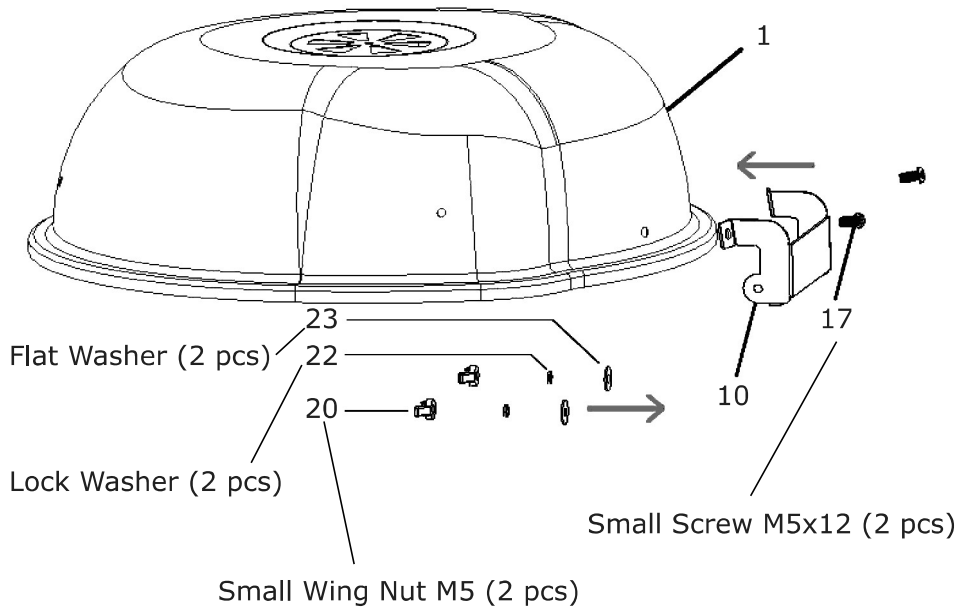




## Step 6 – Lid Hinge Bracket

Hardware: M5X12 Small Screw – 2pcs  
M5 Small Wing Nut – 2pcs  
Lock Washer – 2pcs  
Flat Washer – 2pcs

Unscrew the small wing nut on the hinge bracket. Affix the hinge bracket to the lid using the small wing nut previously removed.

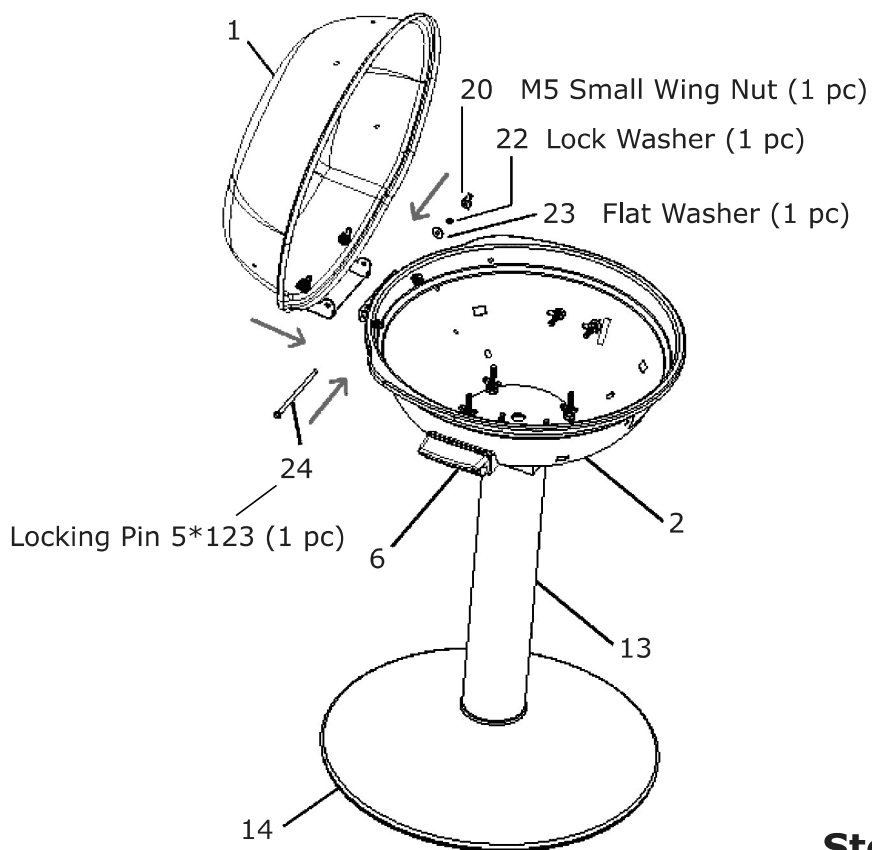


## Step 6

## Step 7 – Locking Pin

Hardware: Locking Pin M5\*123 – 1pc  
M5 Small Wing Nut – 1pc  
Lock Washer – 1pc  
Flat Washer – 1pc

Affix the hinge bracket on the bowl to the hinge bracket on the lid using the locking pin. Lock them using the M5 small wing nut.



## Step 7

## Step 8 – Air Vent

Hardware: M5X12 Small Screw – 1pc

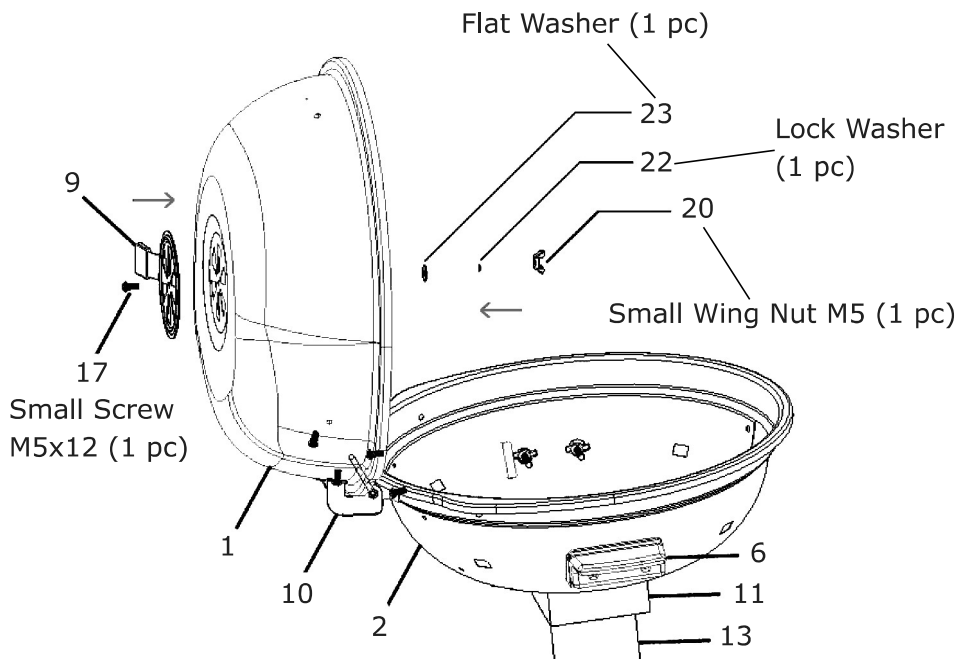
M5 Small Wing Nut – 1pc

Lock Washer – 1pc

Flat Washer – 1pc

Affix the air vent in the middle of the lid.

## Step 8



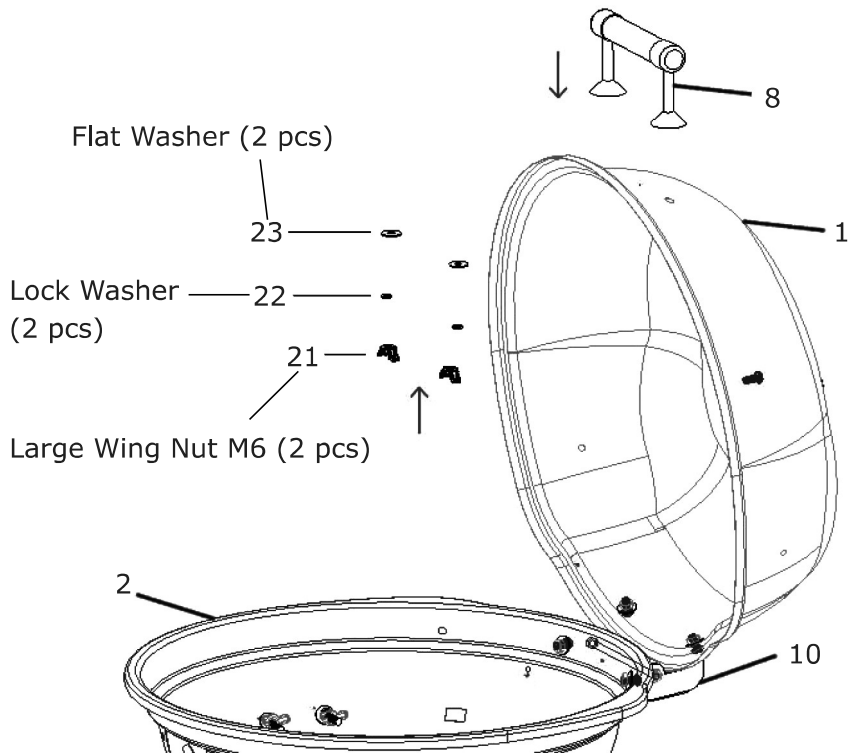
## Step 9 – Lid Handle

Hardware: M6 Large Wing Nut – 2pcs

Lock Washer – 2pcs

Flat Washer – 2pcs

Affix the lid handle to the lid using two (2) M6 large wing nuts.



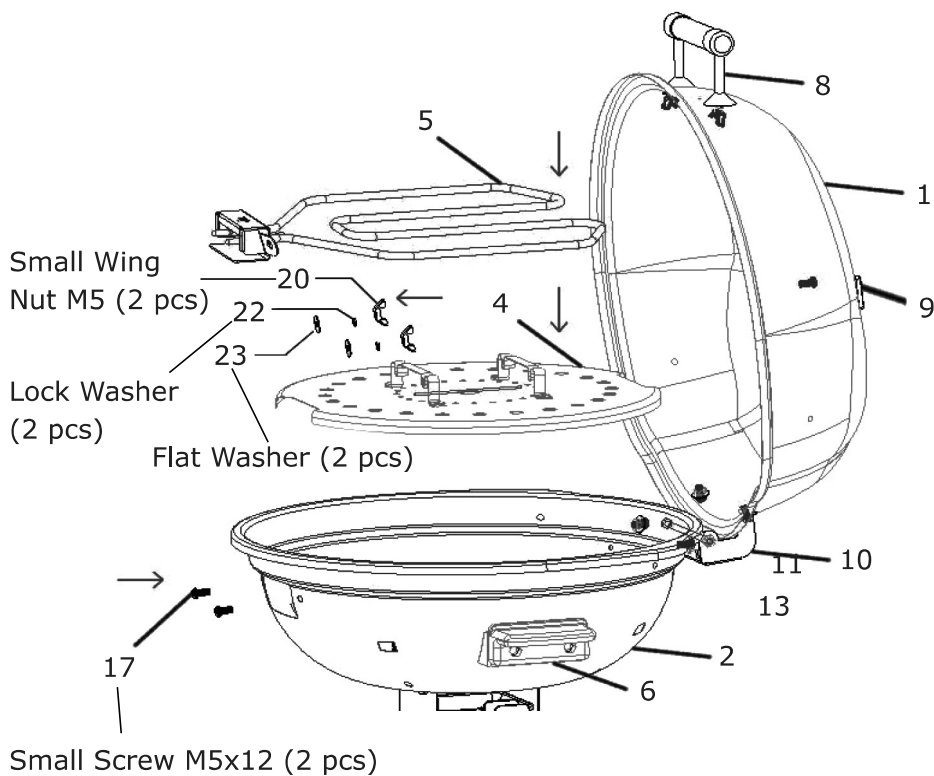
## Step 9

## Step 10 – Heating Components

Hardware: M5X12 Small Screw – 2pcs  
M5 Small Wing Nut – 2pcs  
Lock Washer – 2pcs  
Flat Washer – 2pcs

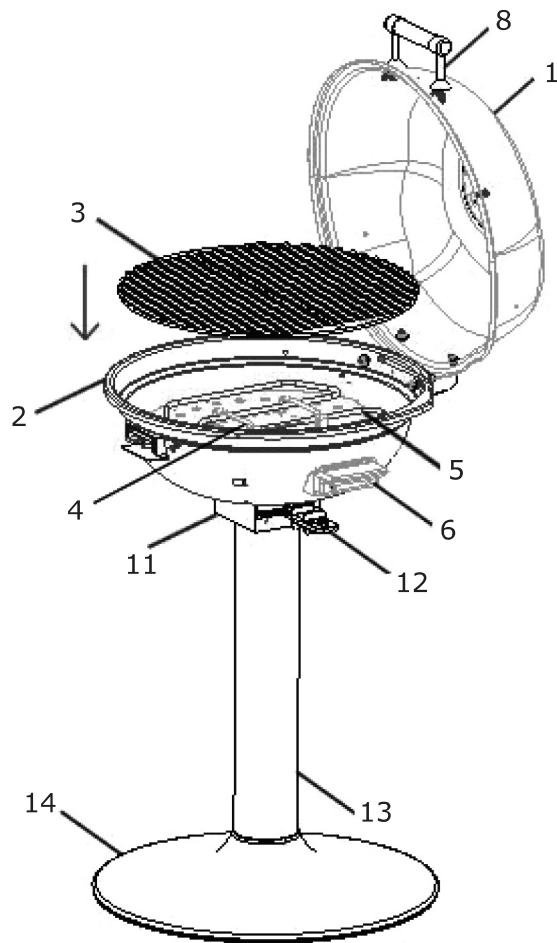
Place the heat reflector plate in the bowl, then place the heating element in the bowl. Affix using M5X12 small screw and then lock using M5 nut.

## Step 10



## Step 11 – Cooking Grill

Place the cooking grill in the bowl.



## Step 11

## Step 12 – Oil Pan

Place the Oil pan into the Connection part (part 11) .

## Step 12

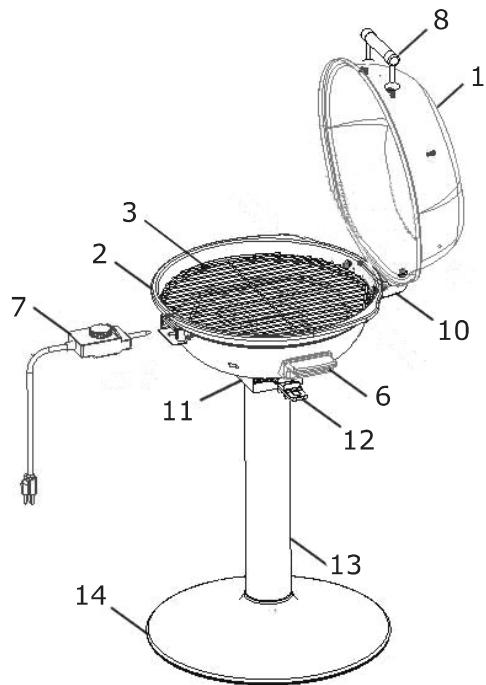


Figure 1

## Using the Temperature Control

---

### Powering Up the Barbecue

1. Make sure the temperature control knob is fully turned to the "OFF" position.( Fig.1 part 7)
2. Plug the temperature controller fully into the heating element front mounting bracket. (Fig. 2,). With the temperature dial facing upwards, the controller probe (and power connection holes) should be inserted until the controller front wall is snug against the heating element front mounting bracket.

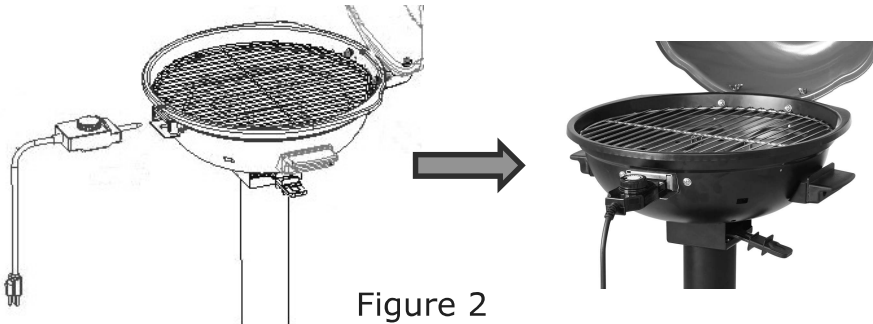


Figure 2



**Hints : The tip of the temperature probe should be above the nearby punch hole on the reflector plate when it is fully inserted ( Fig.3)**

Figure 3

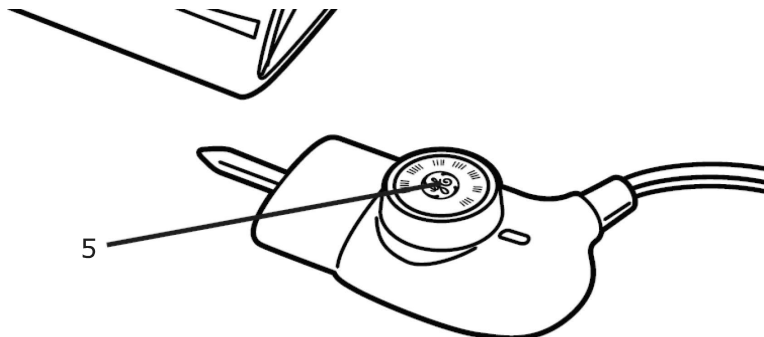


3. Plug the other end of the temperature control knob into a dry ground-fault circuit-interrupter (GFCI) power outlet.

**WARNING:** DO NOT use an extension cord.

**( see IMPORTANT SAFEGUARD again )**

4. Then adjust the setting on the control knob to the desired temperature level.



Settings on the temperature controller are indicated by temperature marks on the upper circular dial, including the "OFF" position marking. The unit is usually packed with the temperature dial set at "OFF" position.