

How to Build a Community Library



Building a community library is a great way to encourage literacy in your local neighborhood, donated to a community in need or assisted living communities. These community libraries can be styled in whatever way best suits the surrounding area using easy to paint, longer lasting LP® Multi-Use Panel (primed gray) and LP® SmartSide® Trim. All the needed products can be found at your local Lowe's Home Improvement store.

MATERIALS LIST

Minimum Quantities	Description
<input type="checkbox"/> 1	1"x2" 8' long, or (4) 1"x2" 4' long, project sized lumber
<input type="checkbox"/> 1	2"x2" 8' long, or (4) 2"x2" 2' long, project sized lumber
<input type="checkbox"/> 1	23/32 Category OSB
<input type="checkbox"/> 3	2'x4' or (1) 4'x8' sheet LP® Multi-Use Panel (primed gray)
<input type="checkbox"/> 1	6' or 8' treated 4"x4" post
<input type="checkbox"/> 1	Exterior screw pack or nails (various sizes)
<input type="checkbox"/> 2	Hinges
<input type="checkbox"/> 1	Knob
<input type="checkbox"/> 1	12"x12" plexi glass

Optional: trim package (3) LP SmartSide 1"x4" trim 8' long, Sherwin Williams Weather Shield Exterior Paint

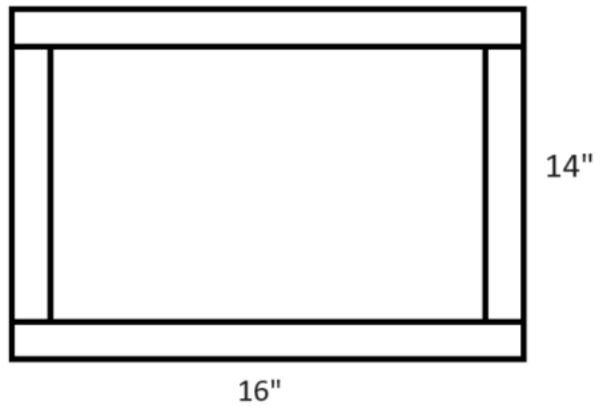
TOOLS LIST

- Hammer or nail gun
- Screw gun (optional)
- Handsaw or circular saw
- Tape measure
- Rafter Square / straight-edge tool
- Pencil
- Eye protection
- Gloves
- Dust Mask
- Hearing protection

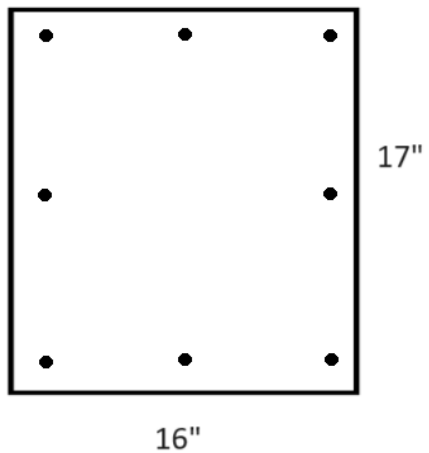
INSTRUCTIONS

Preparing Base:

1. Cut (2) pieces of 2"x2" material 16" long.
2. Cut (2) pieces of 2"x2" material 14" long.
3. Attach pieces together using screws or nails.



4. Cut the 23/32 OSB 16"x17" for base.
5. Attach OSB frame to base using screws or nails.



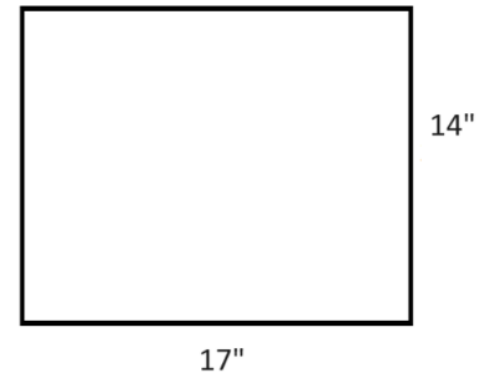
Preparing Framing:

Cut the 1"x2" framing pieces, to be used later.

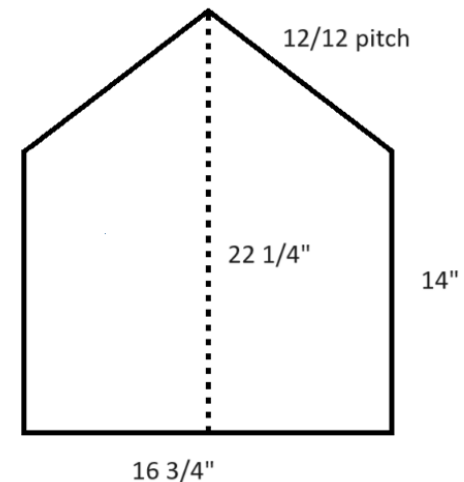
- (4) pcs 13 ³/₄"
- (2) pcs 14"
- (1) pc 17"

Wall Sections:

1. Cut (2) LP® Multi-Use Panel (primed gray) pcs 14" x 17" for the sides.

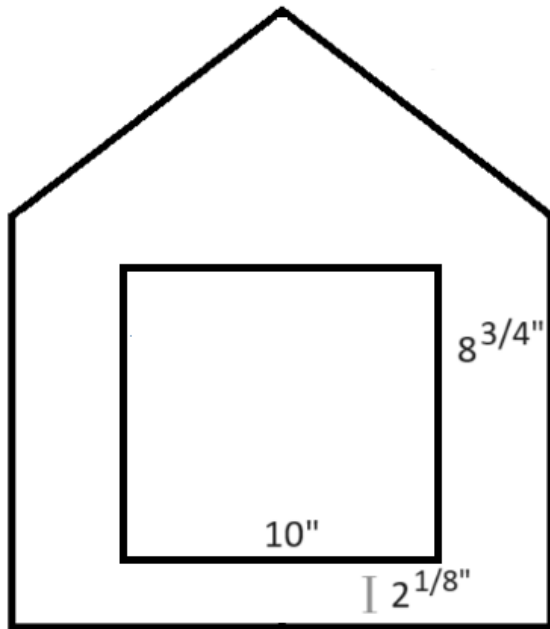


2. Cut 2 LP® Multi-Use Panel (primed gray) pieces for front and back, as shown below.



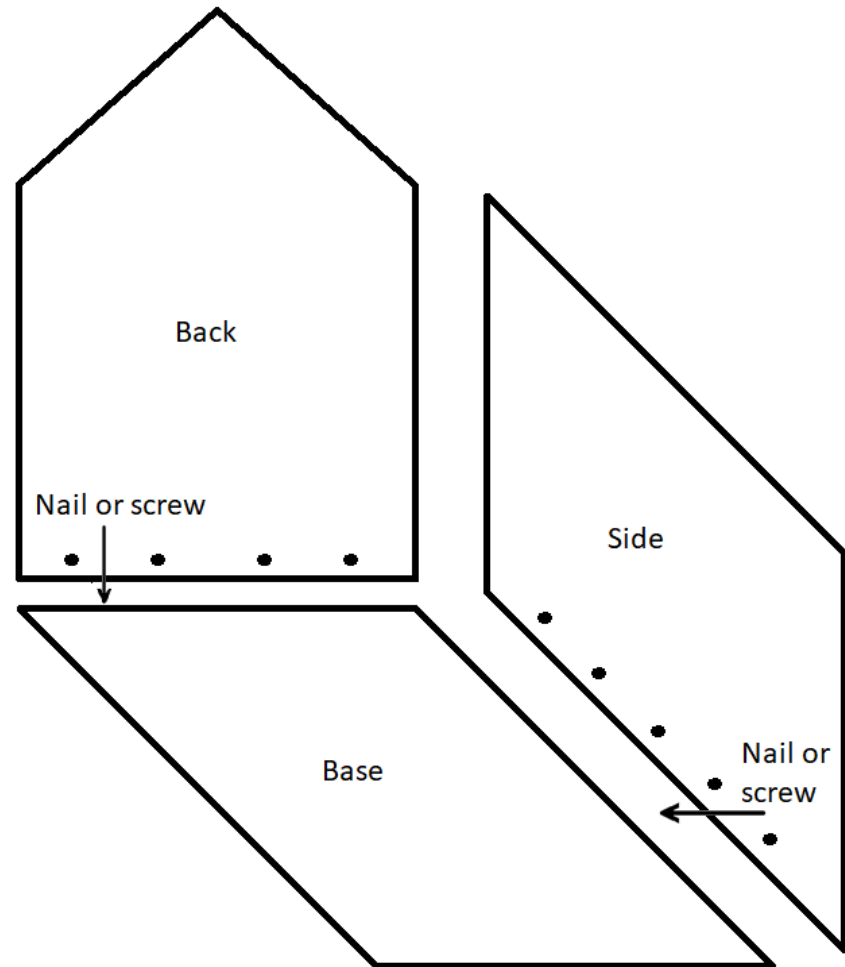
Opening for Books:

Cut an opening in one of the pieces that is 10"x8 ³/₄", 2-1/8" from the bottom edge.

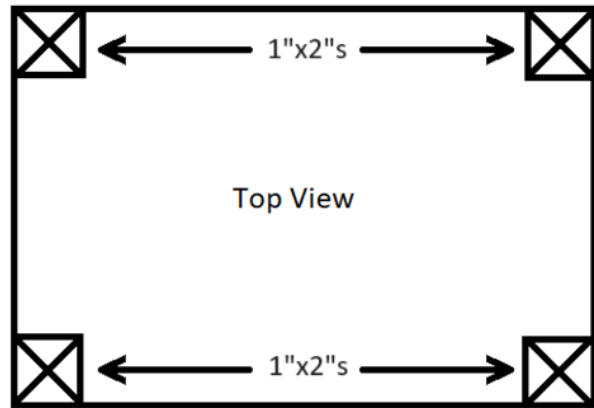


Attaching Wall Sections:

1. Nail or screw all four sections to the base frame.

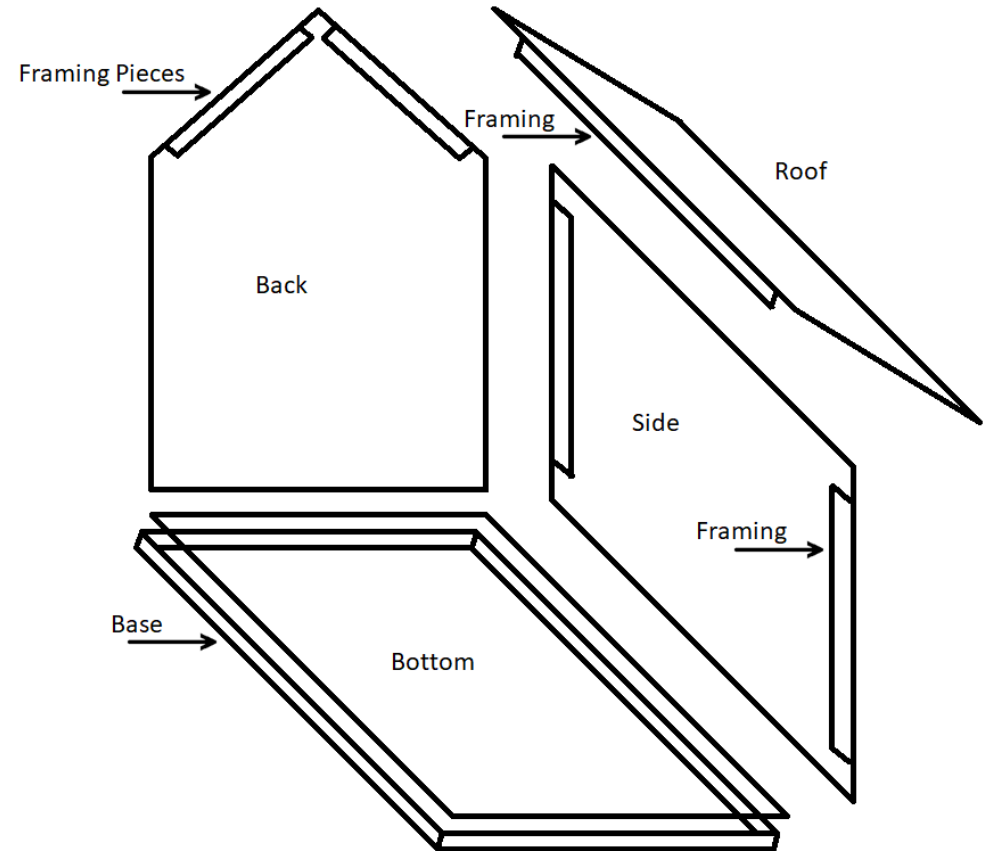


2. Attach the (4) 1"x2" 13 3/4" frame pieces in corners of the wall sections, then the 14" 1"x2" to the top (flush) side of wall.



Roof Sections:

1. Cut LP® Multi-Use Pane (primed gray):
 - 1 pc 19" x 14 3/8"
 - 1 pc 19" x 14"
2. Place the 14" piece of panel on one side of the gable.



Door:

1. Cut (2) 1"x2" pcs 9" long.
(2) 1"x2" pcs 7 ¾" long.
2. Attach at corners using nails or screws.
3. Install hinges.

Trim Pieces:

There are many different details you can create with your 1"x4" trim pieces. You may want to create a ridge cap, as shown, fascia board and corner pieces; each of these features is a custom fit, thus piece sizes are dependent on your ideal plan.

Paint: *(Optional)*

For easiest application, paint before installation, especially when multiple colors are involved. Choose a good quality paint, which Lowe's Home Improvement can customize to create your perfect library.

Attaching the Post:

1. Cut (2) 2"x2"s 14" long.
2. Place the 2"x2"s on each side of the 4"x4" post and attach with screws.
3. Attach the library to the top of the 2"x2"s and 4"x4" post with screws, or nails.

