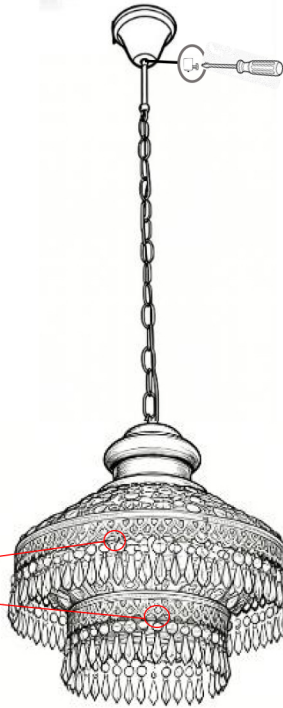
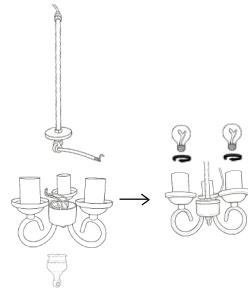


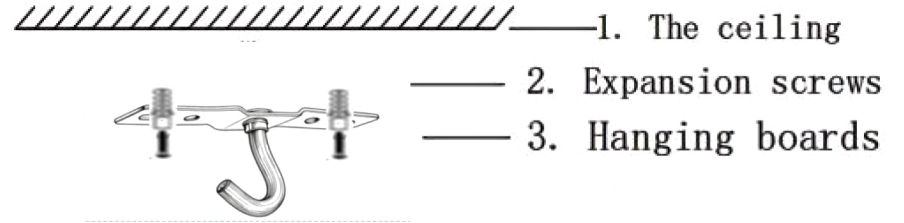
Installation Diagram



Adjust the lamp hanger to the appropriate length and tighten the screw.



- Step 1:** Remove the nut from the lamp pole.
- Step 2:** Connect the wires from the lamp pole to the wires from the lamp holder.
- Step 3:** Fasten the lamp pole and lamp holder with the nut, then screw the bulb into the lamp holder.
- Step 4:** Connect and secure the lamp pole to the lampshade using a nut.



- 1. The ceiling
 - 2. Expansion screws
 - 3. Hanging boards
1. THIS PRODUCT IS SUITABLE FOR THE POWER OF 110V.
 2. PLEASE WEAR GLOVES AS INSTALLMENT AND AVOID ROT ON THE PLATE SURFACE.
 3. PLEASE TURN OFF THE POWER SOURCE BY THE TIME OF CLEANING, AND MUST USE SOFT CLOTH.
 4. PROHIBITED TO USE CORROSIVE DETERGENU.
 5. MUST INSTALL IN THE STABLE PLACE AND DO USUALLY PERIODICAL CHECKING.