

# Installation Guide

## SMART TOILET



### Prior to Unpacking



- Overall package weighs about 100 pounds! Two adults are required to carefully unpack the product to avoid personal injuries or accidental damage to the item.
- Each item is carefully packed in customized foam. However, violent handling and shipping might crack the item. Observe potential damage while unpacking.
- The seat cover might not be hinged firmly with the toilet base. DO NOT lift the toilet by grabbing the separate seat.



TEAM LIFT



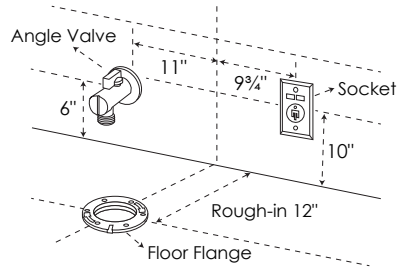
FRAGILE

### Prior to Installation



- Inspect the toilet to ensure no damages during transit.
- Observe all plumbing and building codes in accordance with your state and local requirements.
- All dimensions are nominal. Actual size of item received might vary by up to 1/8 inch. Make sure to measure your toilet before installation.
- The step-by-step guide in the installation instructions is for general reference only. Should there be any discrepancies, Eridanus cannot be held liable. It is recommended that all Eridanus products be installed by a licensed professional.
- Read installation and maintenance instructions and user manual thoroughly before installing. Be sure to use proper tools and always wear proper personal safety equipment.
- Two adults are required to handle and install the toilet to avoid personal injuries or accidental damage to the item.
- Diagrams are for general display and do not represent a specific model.
- Make sure water pressure meets the minimum requirement for your model.
- This appliance must be grounded. Connect only to a circuit protected by a Ground-Fault Circuit-Interrupter(GFCI) or Residual Current Device(RCD).

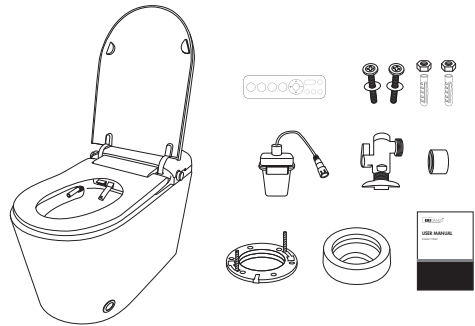
- Confirm that the item received will fit in the intended location and that plumbing fixtures are located where legally required before installation begins.



## Checklist

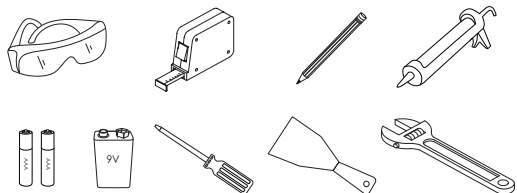
### • What's in the box

- ☐ a. Smart Toilet
  - ☐ b. Angle Valve w/ Adapter
  - ☐ c. Wax Ring Gasket
  - ☐ d. Flange
  - ☐ e. Mounting Bolts
  - ☐ f. Battery Box
  - ☐ g. User Manual
  - ☐ h. Installation Guide
  - ☐ i. Remote Control\*
- \*whether included depends on model

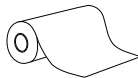


### • Extra Parts/Tools Required

- ☐ i. Safety Glass
- ☐ ii. Tape Measure
- ☐ iii. Screwdriver
- ☐ iv. Adjustable Wrench
- ☐ v. Putty Scraper
- ☐ vi. Pencil/Marker
- ☐ vii. Caulk
- ☐ viii. AAA Battery x2
- ☐ ix. 9V Battery



- ☐ x. Paper Towels
- ☐ xi. Disposable Gloves
- ☐ xii. Bucket
- ☐ xiii. Level
- ☐ xiv. Drill
- ☐ xv. Soft Cloth/Tarp



**NOTE** Other tools might be required during installation.

## Installation

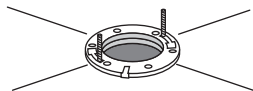
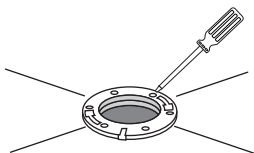


### Install Closet Flange & Bolts

- Inspect existing closet flange. Replace it if necessary.

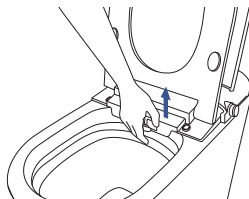
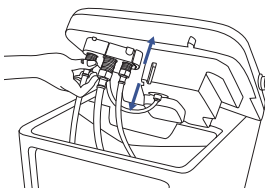
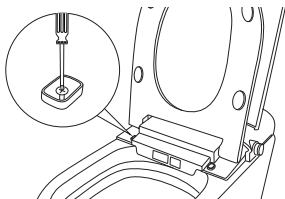


**REMINDER** When replacing the flange, always remember to lock the nuts into position to prevent the toilet from shifting over time and damaging the wax seal.



### Remove Bidet Assembly

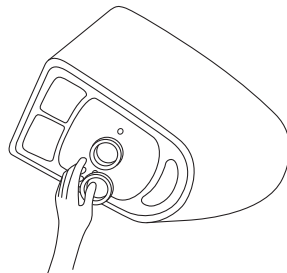
- Loosen the two screws on the bidet, detach the hose and wiring, and carefully remove the bidet.





## Apply Wax Gasket & Sealant

- With assistance, carefully turn the toilet on its side.
- Apply sealant to inside of the wax ring gasket and outside of the discharge hole on toilet.
- Attach the wax ring gasket evenly around the discharge hole.



**REMINDER** Consider placing a tarp over the floor for surface protection.

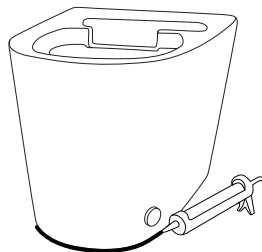
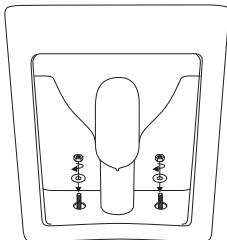
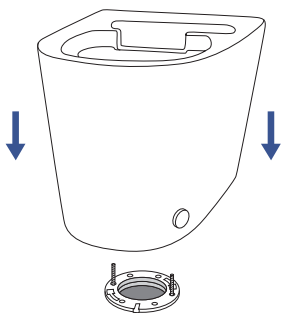
## Install Toilet Bowl

- Gently lower the toilet bowl onto the floor flange, ensuring the closet bolts align with and pass through the pre-drilled holes.
- Position the toilet squarely against the wall, then firmly press down on the wax ring and flange to establish a waterproof seal. Secure the toilet by alternately tightening the washers and nuts until it is firmly anchored to the floor.



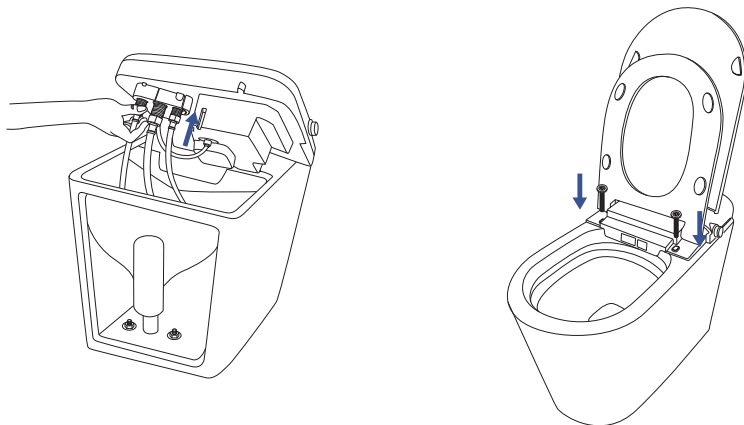
**REMINDER** Avoid over-tightening as it could potentially cause the ceramics to crack.

- Apply a smooth layer of sealant around the base. Remove any excess sealant.



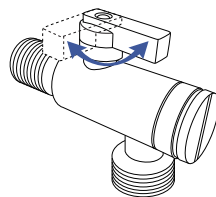
### Reinstall Bidet Assembly

- Put the bidet in position on the toilet bowl. Reconnect the hose and wire.
- Securely fasten the bidet to the toilet bowl by tightening the two screws.



### Connect to Water Supply

- Install the angle valve. Discharge water for 3-5 mins. Connect the valve to the supply line.
- Test the water pressure and adjust the angle valve accordingly to ensure flushing function operates properly.



**REMINDER** When installing, use the new hose and other specified parts provided with the toilet. Do not reuse old hoses or parts, as this may cause leaks.

### Check for Leaks and Flush Function

- Perform a flush test to ensure there are no leaks from the waterline or flange.
- Refer to the user manual to check if the smart toilet is operating properly.

# Installation Guide

COPYRIGHT 2025 ERIDANUS