

Model #DV-1K513

Overall Dimension: 31 15/16" (L) x 19 1/16" (W) x 10 3/16" (D)

Features:

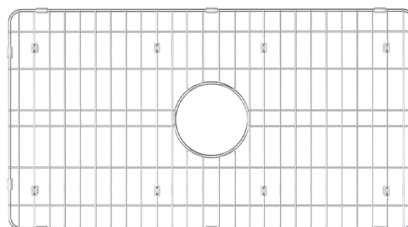
- High-capacity bowls offer more room inside for stacking dishes and handling large baking sheets and roasters.
- A convenient dual mount design allows you to install this sink as an under-mount, or as a top-mount with any type of kitchen counter.
- The sink is handcrafted from fine fireclay with an easy-to-clean surface and ever-lasting finish.
- Fade-resistant white glazed finish stays shiny and bright for years to come.
- Extreme resistance to chip, discoloration, scratching and cracking.
- Sink can accommodate a 3 1/2" garbage disposal.



Package Included:



● Fireclay Kitchen Sink(DV-1K513)

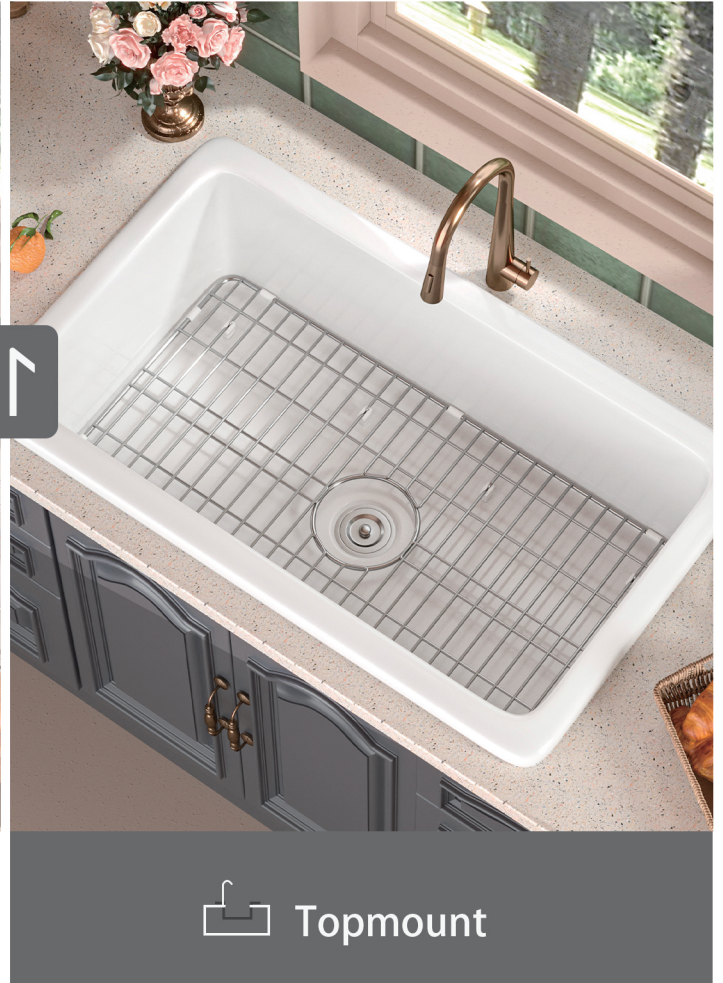


● Sink Grid(DV-1K513G14)



● Basket Strainer(DV-1D905)

Two Types of Installation Methods:

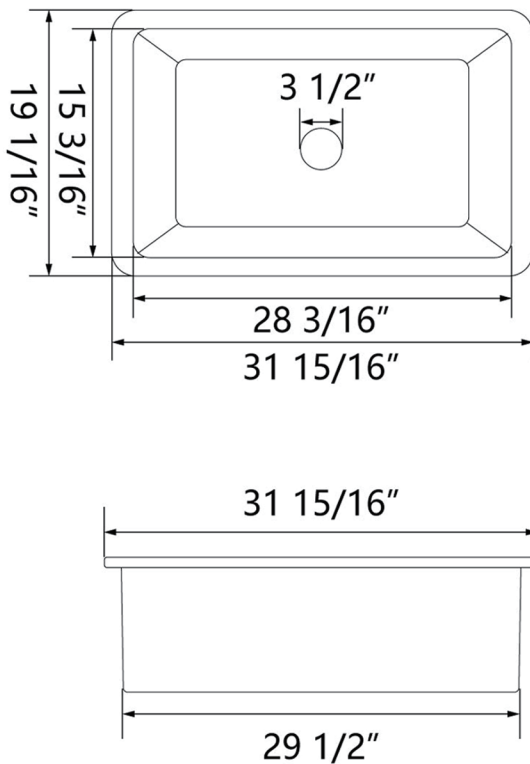


About DeerValley

At DeerValley, we provide high-quality sanitary products for bathroom and kitchen use. We always bring innovative designs and products to your home. DeerValley has always had the most stringent requirements for our products. We ensure that each product is tested thousands of times in order to provide a good product experience and a better lifestyle.

Technical Specifications:

- + Outer: 31 15/16" (L) x 19 1/16" (W) x 10 3/16" (D)
- + Inter: 28 3/16" (L) x 15 3/16" (W) x 9 5/16" (D)
- + Weight: 69 lbs
- + Drain: 3 1/2" diameter



#DV-1K513

Sinks are individually handcrafted, so sizes may vary slightly.

1 Year Warranty

All DeerValley kitchen sinks come with our Warranty within one year from the delivery date.



TEL: +1 312-626-9466 | service@deervalleybath.com