



# Instruction Manual

Item# HC-243-8298



## Having Trouble?

Chat with us on your phone

Simply point your phone camera towards  
the QR code or see our website



**xbrand.us**

or email at

**customerservice@ecintel.com**

**Monday - Friday 7:00AM - 3:30PM PST**

## CLASSIC THREE-TIERED FOUNTAIN



### Purchased your product online?

We would really appreciate it if you can share your experience  
with others by reviewing our product on the website  
from which you purchased.



### Have Questions or Issues? Need help with assembly?

Contact us and we will resolve immediately.

Simply point your phone camera towards the QR code or see our website

**Support Hours M-F 7:00AM - 3:30PM (U.S Pacific Time)**



Chat with us:  
**xbrand.us**



Email:  
**customerservice@ecintel.com**



Call:  
**951-319-4433**

### Limited 1-Year Manufacturer Warranty on xbrand.us

#### Manufacturer warranty covers:

- Parts that are deemed defective within 30 days will be shipped free of charge, within the 48 contiguous states.
- Any warranty claim after 30 days, will require shipping to be paid by the customer.

Any visible damage due to the neglect, misuse, or abuse will void the limited warranty of the product.

For further information, please contact us:

Chat with us: [xbrand.us](https://xbrand.us)



Simply point your phone camera towards the QR code or see our website

Email: [customerservice@ecintel.com](mailto:customerservice@ecintel.com)

**Purchased your product online?**

**We would really appreciate it if you can share your experience with others by reviewing our product on the website from which you purchased.**



Please use your smart phone camera to scan the QR code.  
Simply point your camera and let the camera scan the  
code below, and click on the link that opens up.



<https://xbrand.us/product/hc-243-8298/>

**Contents ..... 2**

**What is included ..... 3**

**Assembly instructions ..... 4**

**YouTube video instruction ..... 5**

**Warranty ..... 6**

## What is included



A. Pedestal Base



B. Middle Pedestal



C. Top Pedestal



D. Tier 3 Bowl



E. Tier 2 Bowl



F. Tier 1 Bowl



G. Top

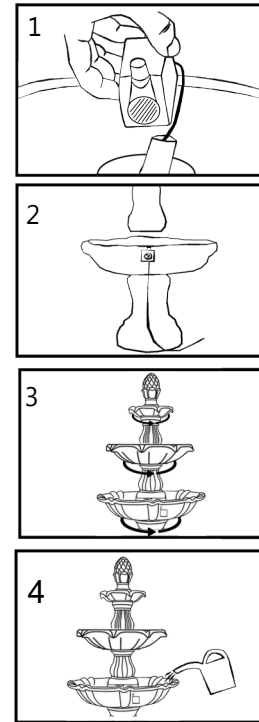


H. Pump House Door



I. Pump

## Assembly instructions



1. Place the pump into the tier 3 bowl and place the power cord through the hole.
2. Place the cord through the pedestal base and then lock the tier 3 bowl. Lock the middle pedestal.
3. Thread the hose and lock the top to the tier 1 bowl, thread the hose through the top pedestal and lock to the tier 1 bowl. Thread the hose through the tier 2 bowl and lock to the top pedestal.
4. Connect the hose to the pump and lock the tier 2 bowl to the middle pedestal. Place the cover on the middle pedestal. Fill with water and connect to a power source.



**Scan the QR code for detailed instructions**

<https://xbrand.us/product/hc-243-8298/>