

# Carlon SuperBlue<sup>®</sup> SuperBlue<sup>™</sup> Boxes

## Carlon SuperBlue<sup>®</sup> PVC Boxes

### Carlon SuperBlue<sup>®</sup> Boxes

combine the features of the hard shell thermoset box and the thermoplastic PVC style box to create a “new” rigid non-metallic wiring box. Molded out of specially formulated thermoplastic material, Carlon SuperBlue<sup>®</sup> boxes are so strong they won't crack or break in extreme environments. So rigid, they resist flexing and hold their shape even in the worst applications. The boxes are designed to nest inside each other

to take up less space on the shelf or in the truck, while still providing the largest wirefill capacity in their class.

- All PVC boxes are listed to UL514C
- All PVC boxes are listed for masonry walls
- All PVC boxes are UL Classified for 2 hr. fire wall and/or fire ceiling
- All PVC boxes meet NEMA OS-2
- All PVC boxes are permissible for use with 90 degree C conductors
- UL File E11461 and R9140

### New Work

#### One-Gang 22.0 Cu.In.



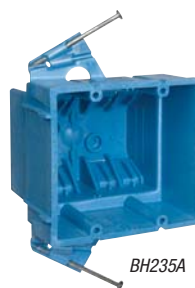
BH122A-UPC



BH122S



| CAT. NO.   | SIZE<br>CU. IN. | MOUNTING MEANS | DESCRIPTION | DIMENSIONS (IN.)  | STD. CTN.<br>QTY. |
|------------|-----------------|----------------|-------------|---|-------------------|
| BH122A-UPC | 22.0            | Nails          | One-gang    | 3 <sup>7</sup> / <sub>8</sub> L x 2 <sup>3</sup> / <sub>8</sub> W x 3 <sup>3</sup> / <sub>4</sub> D | 100               |
| BH122S     | 22.0            | Screws         | One-gang    | 3 <sup>7</sup> / <sub>8</sub> L x 2 <sup>3</sup> / <sub>8</sub> W x 3 <sup>3</sup> / <sub>4</sub> D | 100               |



BH235A



BH235S

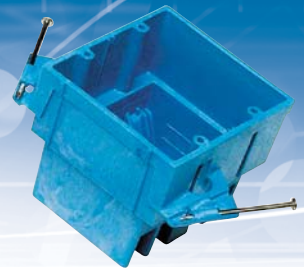


#### Two-Gang 35.0 Cu.In.

| CAT. NO. | SIZE<br>CU. IN. | MOUNTING MEANS | DESCRIPTION               | DIMENSIONS (IN.)  | STD. CTN.<br>QTY. |
|----------|-----------------|----------------|---------------------------|---|-------------------|
| BH235A   | 35.0            | Nails          | Two-gang; integral clamps | 3 <sup>7</sup> / <sub>8</sub> L x 4 <sup>1</sup> / <sub>8</sub> W x 3 <sup>1</sup> / <sub>2</sub> D | 48                |
| BH235S   | 35.0            | Screws         | Two-gang; integral clamps | 3 <sup>7</sup> / <sub>8</sub> L x 4 <sup>1</sup> / <sub>8</sub> W x 3 <sup>1</sup> / <sub>2</sub> D | 48                |



# Carlson SuperBlue<sup>®</sup> SuperBlue<sup>™</sup> Boxes

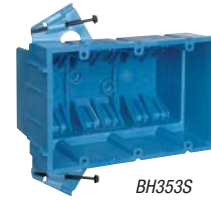


## New Work

### Three-Gang 53 Cu. In.



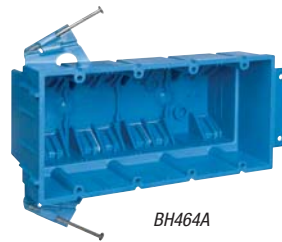
BH353A



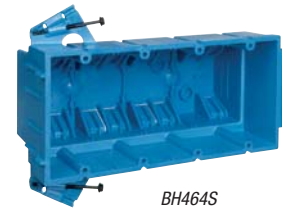
BH353S



| CAT. NO. | SIZE<br>CU. IN. | MOUNTING MEANS | DESCRIPTION                 | DIMENSIONS (IN.)  | STD. CTN.<br>QTY. |
|----------|-----------------|----------------|-----------------------------|---|-------------------|
| BH353A   | 53.0            | Nails          | Three-gang; integral clamps | 5 <sup>7</sup> / <sub>8</sub> L x 3 <sup>3</sup> / <sub>4</sub> W x 3 <sup>1</sup> / <sub>2</sub> D | 24                |
| BH353S   | 53.0            | Screws         | Three-gang; integral clamps | 5 <sup>7</sup> / <sub>8</sub> L x 3 <sup>3</sup> / <sub>4</sub> W x 3 <sup>1</sup> / <sub>2</sub> D | 24                |



BH464A



BH464S

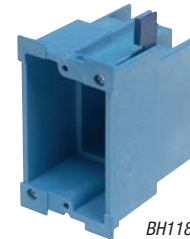


### Four-Gang 64 Cu. In.

| CAT. NO. | SIZE<br>CU. IN. | MOUNTING MEANS            | DESCRIPTION                | DIMENSIONS (IN.)  | STD. CTN.<br>QTY. |
|----------|-----------------|---------------------------|----------------------------|---|-------------------|
| BH464A   | 64.0            | Nails and molded bracket  | Four-gang; integral clamps | 7 <sup>3</sup> / <sub>4</sub> L x 3 <sup>7</sup> / <sub>8</sub> W x 3 <sup>1</sup> / <sub>2</sub> D | 24                |
| BH464S   | 64.0            | Screws and molded bracket | Four-gang; integral clamps | 7 <sup>3</sup> / <sub>4</sub> L x 3 <sup>7</sup> / <sub>8</sub> W x 3 <sup>1</sup> / <sub>2</sub> D | 24                |

## Old Work

### One-Gang 18.0 Cu. In.



BH118R



| CAT. NO. | SIZE<br>CU. IN. | MOUNTING MEANS               | DESCRIPTION               | DIMENSIONS (IN.)  | STD. CTN.<br>QTY. |
|----------|-----------------|------------------------------|---------------------------|---|-------------------|
| BH118R   | 18.0            | Mounting ears & swing clamps | One-gang; integral clamps | 3 <sup>7</sup> / <sub>8</sub> L x 2 <sup>3</sup> / <sub>8</sub> W x 3 <sup>5</sup> / <sub>8</sub> D | 36                |



BH234R



### Two-Gang 34.0 Cu. In.

| CAT. NO. | SIZE<br>CU. IN. | MOUNTING MEANS               | DESCRIPTION               | DIMENSIONS (IN.)  | STD. CTN.<br>QTY. |
|----------|-----------------|------------------------------|---------------------------|---|-------------------|
| BH234R   | 34.0            | Mounting ears & swing clamps | Two-gang; integral clamps | 3 <sup>7</sup> / <sub>8</sub> L x 2 <sup>3</sup> / <sub>8</sub> W x 3 <sup>5</sup> / <sub>8</sub> D | 18                |

Carlson SuperBlue<sup>®</sup> PVC Boxes



United States  
Tel: 901.252.8000  
Fax: 901.252.1354

Technical Services  
Tel: 888.862.3289

Thomas & Betts

www.tnb.com



# Carlton SuperBlue<sup>®</sup> SuperBlue<sup>™</sup> Boxes

Carlton SuperBlue<sup>®</sup> PVC Boxes

## Ceiling Boxes



BH525A-UPC



BH525P



### 3/0-4/0 Combination 25.0 Cu.In.

| CAT. NO.     | SIZE<br>CU. IN. | MOUNTING MEANS | DESCRIPTION                                    | DIMENSIONS (IN.) | STD. CTN.<br>QTY. |
|--------------|-----------------|----------------|--|------------------|-------------------|
| • BH525A-UPC | 25.0            | Nails          | Integral clamps                                | 4 Dia. x 3.00 D  | 48                |
| • BH525P     | 25.0            | Nails          | Integral clamps; ground lug and screw attached | 4 Dia. x 3.00 D  | 24                |

• Listed for fixture support up to 50 lbs.



BH525L



### Fan Box 25.0 Cu. In.

| CAT. NO.  | SIZE<br>CU. IN. | MOUNTING MEANS      | DESCRIPTION                                    | DIMENSIONS (IN.) | STD. CTN.<br>QTY. |
|-----------|-----------------|---------------------|--|------------------|-------------------|
| • BH525L  | 25.0            | L bracket and nails | Integral clamps                                | 4 Dia. x 3.00 D  | 24                |
| • BH525LP | 25.0            | L bracket and nails | Integral clamps; ground lug and screw attached | 4 Dia. x 3.00 D  | 24                |

• Listed for fan support up to 35 lbs. and fixture support up to 50 lbs.



BH525H



### Ceiling Box with Hanger Bar 25.0 Cu. In.

| CAT. NO.  | SIZE<br>CU. IN. | MOUNTING MEANS                | DESCRIPTION                                    | DIMENSIONS (IN.) | STD. CTN.<br>QTY. |
|-----------|-----------------|-------------------------------|--|------------------|-------------------|
| • BH525H  | 25.0            | Hanger bar 11 1/2" to 18 1/2" | Integral clamps                                | 4 Dia. x 3.00 D  | 20                |
| • BH525HP | 25.0            | Hanger bar 11 1/2" to 18 1/2" | Integral clamps; ground lug and screw attached | 4 Dia. x 3.00 D  | 20                |

• Listed for fixture support up to 50 lbs.



BH614R



BH614RP



### 3 1/2" 14.5 Cu. In.

| CAT. NO.   | SIZE<br>CU. IN. | MOUNTING MEANS               | DESCRIPTION                         | DIMENSIONS (IN.)     | STD. CTN.<br>QTY. |
|------------|-----------------|------------------------------|-------------------------------------|----------------------|-------------------|
| •† BH614R  | 14.5            | Base, ears & snap-in bracket | Round old/new work box              | 3 1/2 Dia. x 2 3/8 D | 24                |
| •† BH614RP | 14.5            | Base, ears & snap-in bracket | Round old/new work box w/ground lug | 3 1/2 Dia. x 2 3/8 D | 24                |

• Listed for wall fixture support up to 10 lbs.

† Tighten screws to to 10 in.-lbs.

