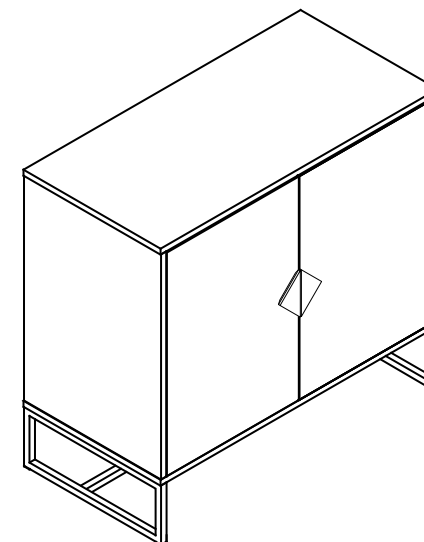
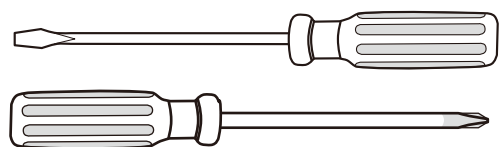
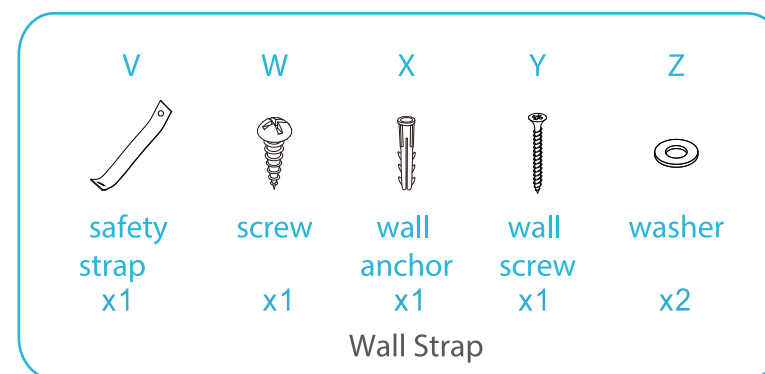
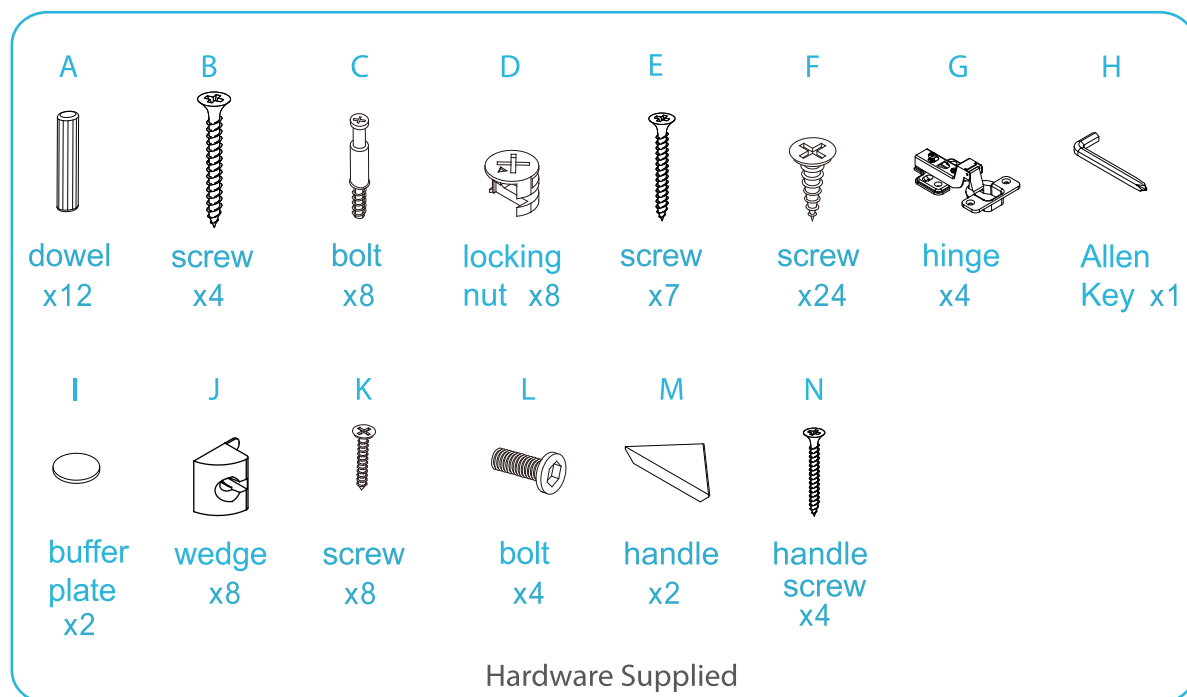
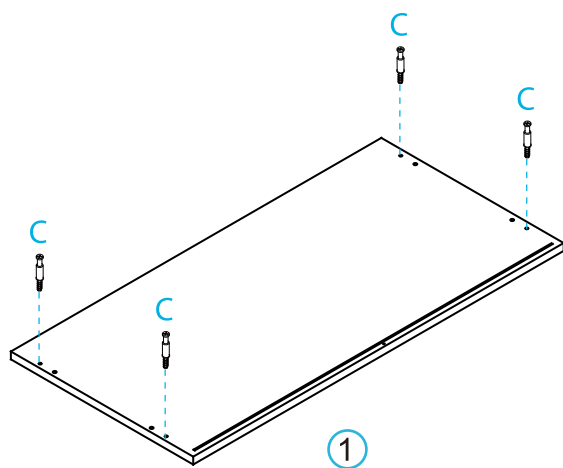


If you have any questions, please feel free to contact us.
Email: lowes.team@qualfurn.net

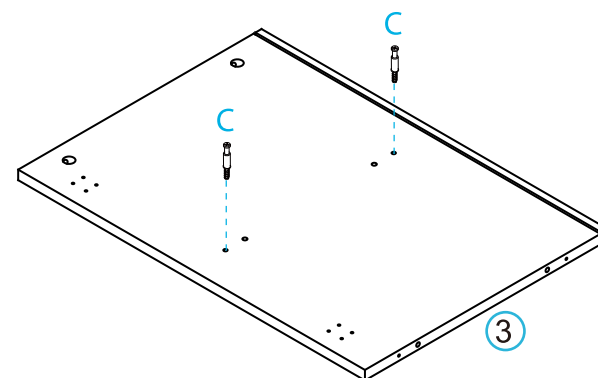
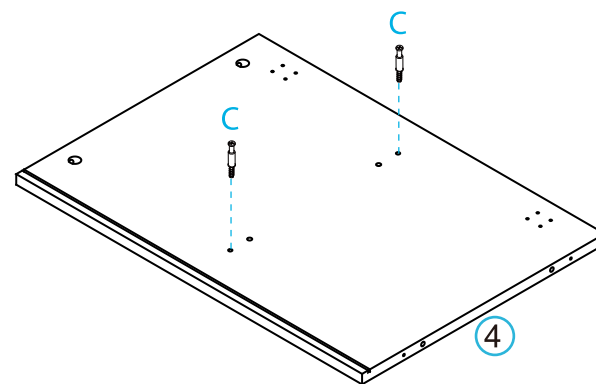


Attention please:
Improper use of screws may cause the product surface damage!
Please be careful when installing.

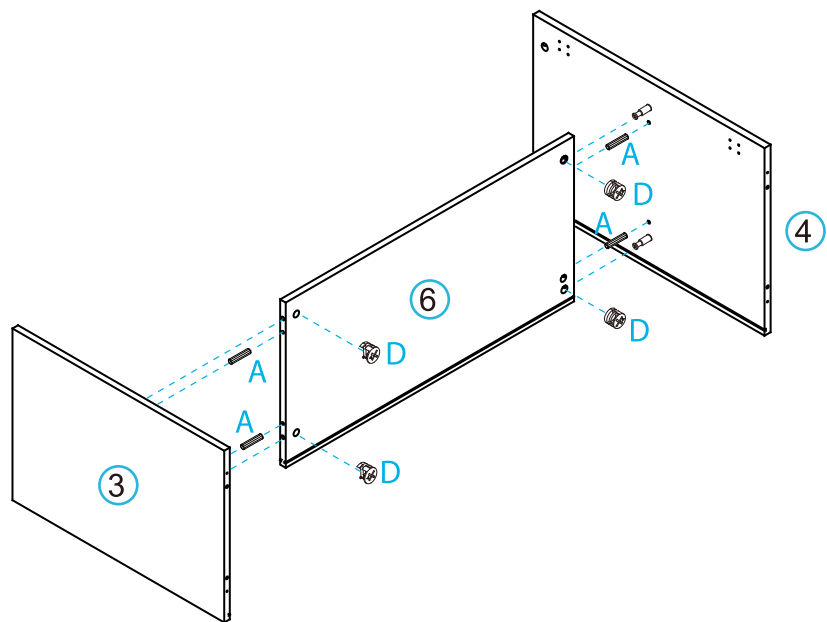
1



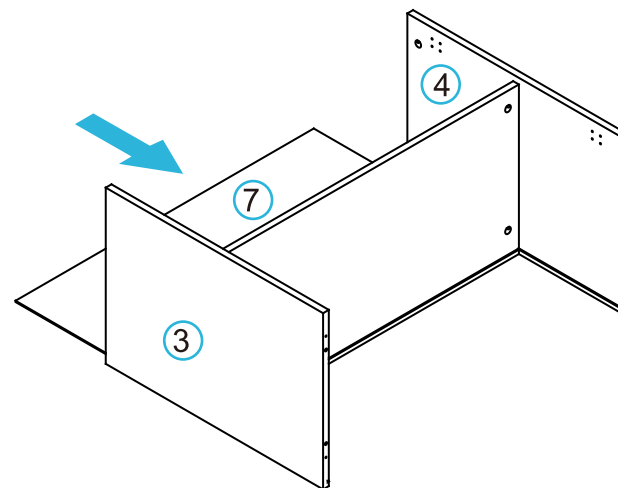
2



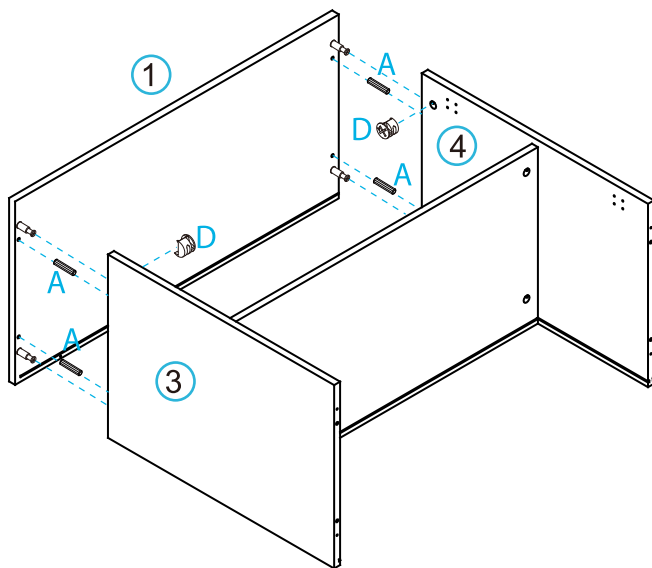
3



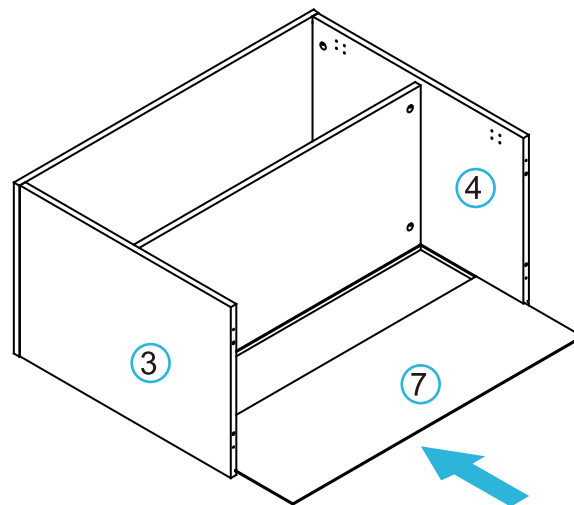
4



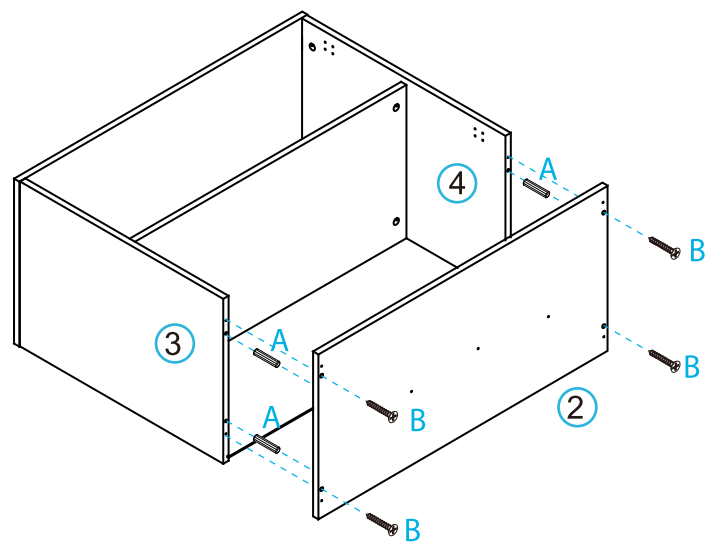
5



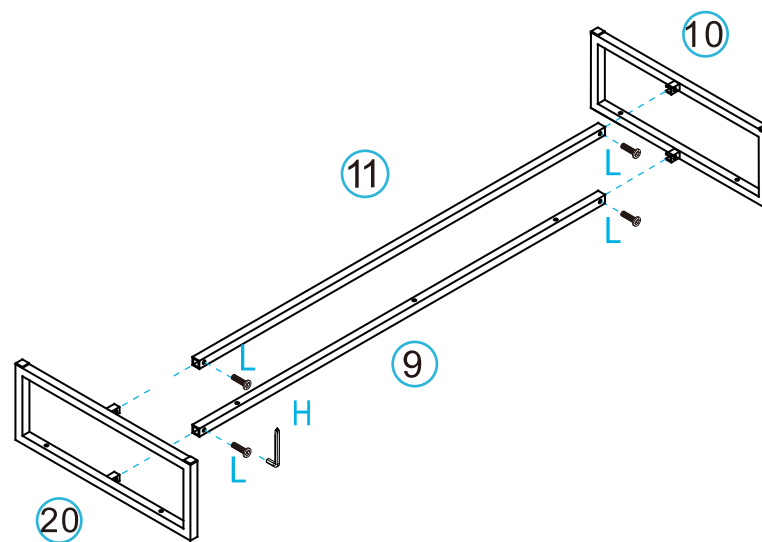
6



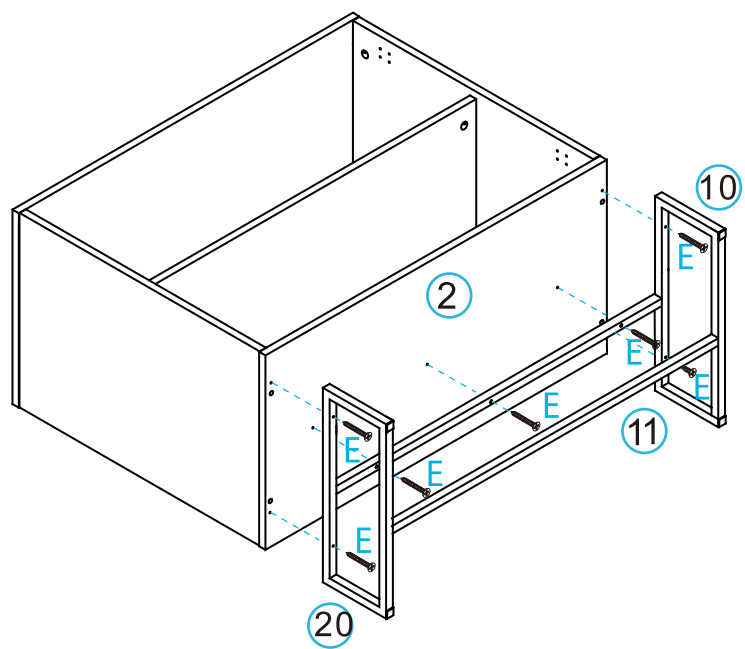
7



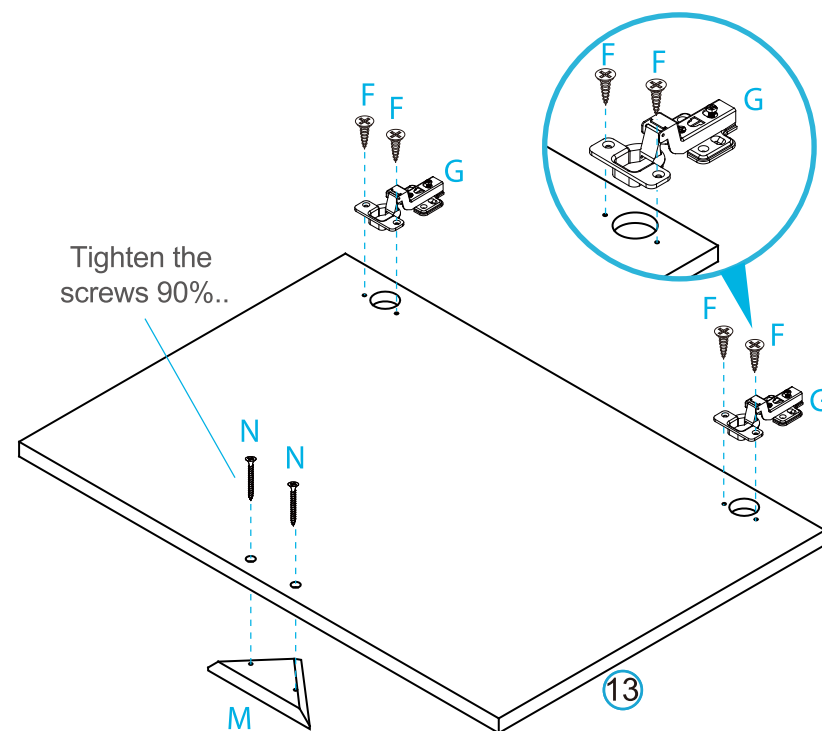
8



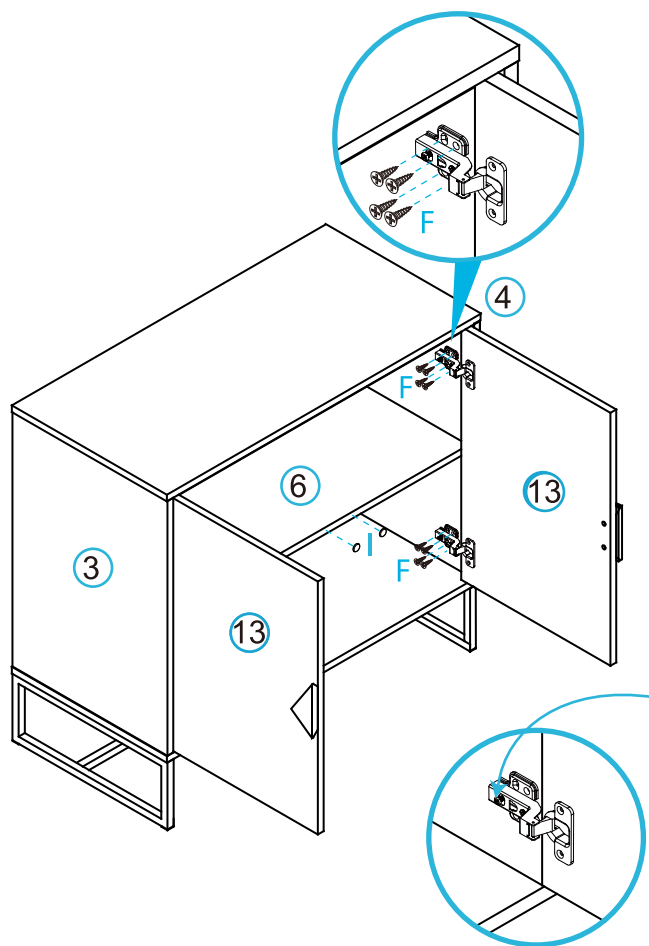
9



10 Door x 2

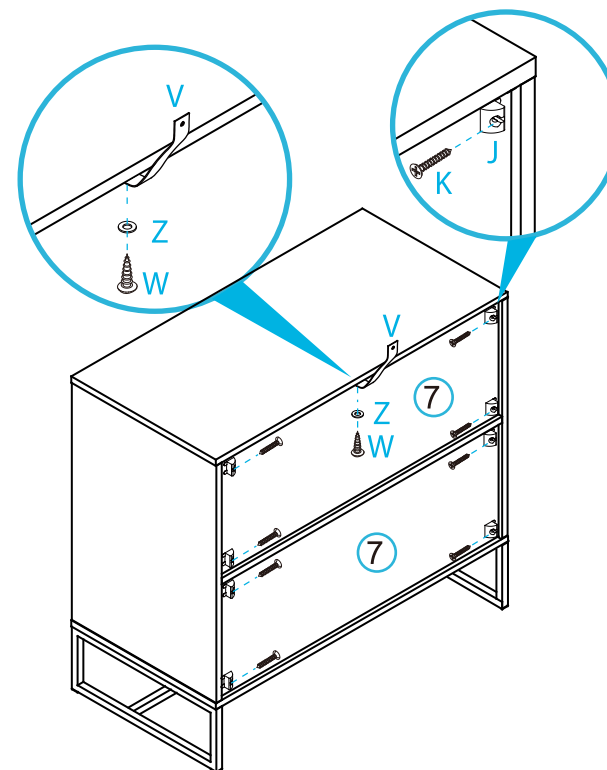


11

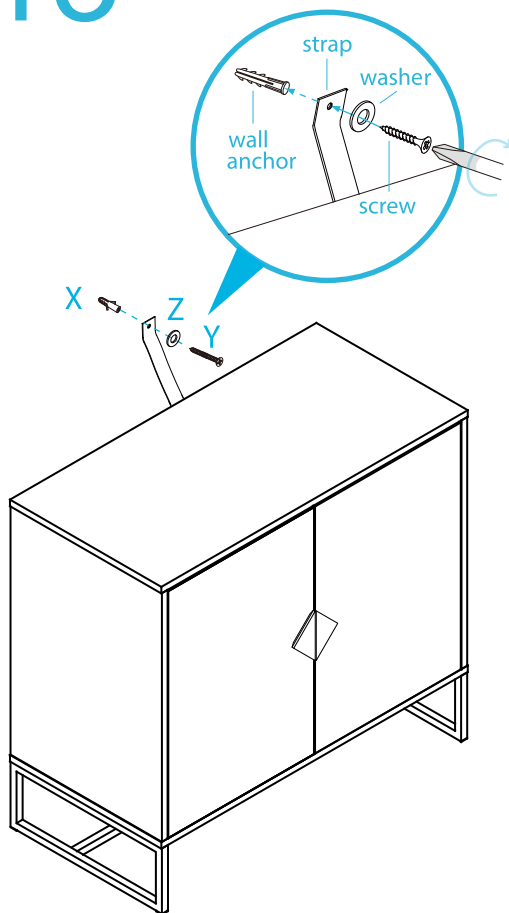


NOTE: If the doors are uneven or there is a gap in the middle, loosen or tighten the screw on the door hinge until they are sitting flush.

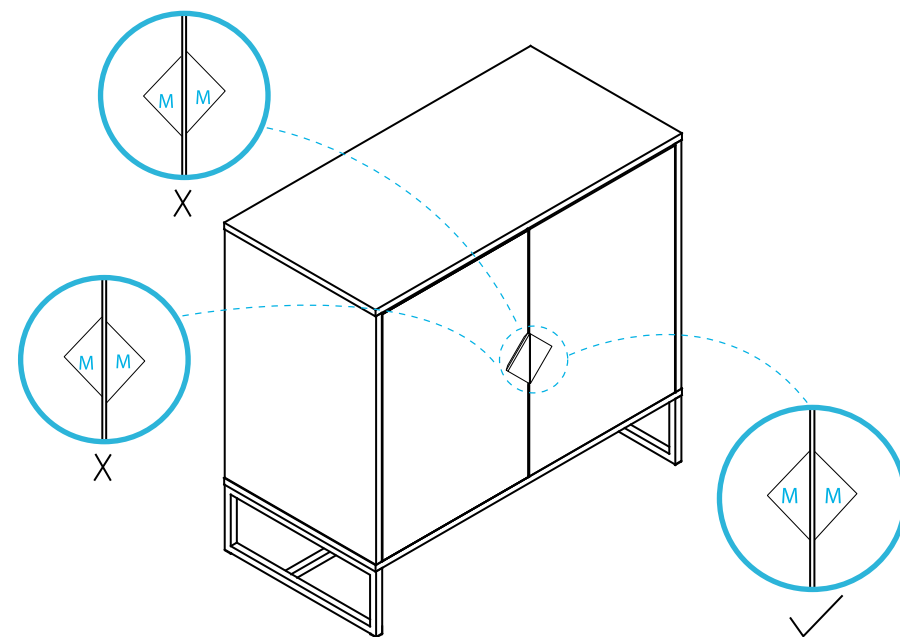
12



13



14



After installation, if the two handles are not aligned, loosen the screws in the back, adjust the two handles to align them, and then tighten the screws back up.