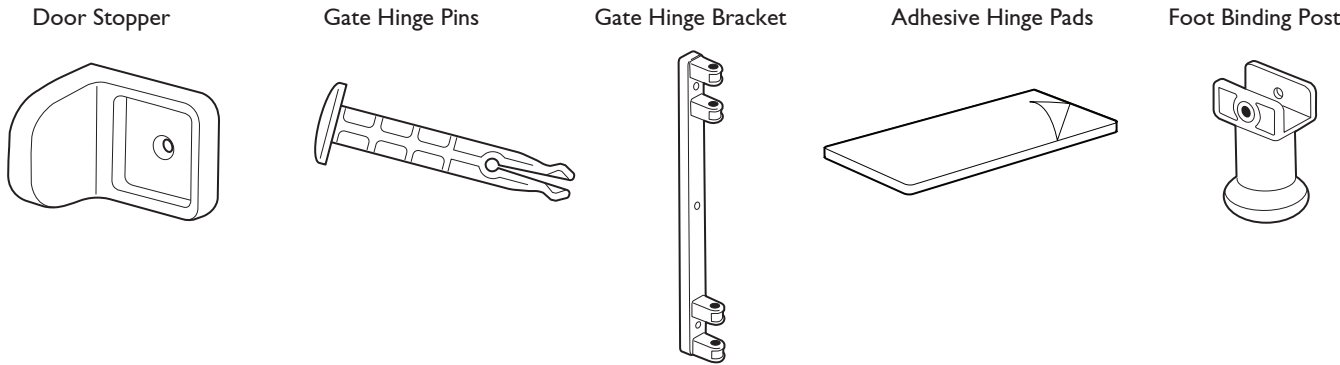


maintenance:

- Check all hardware to ensure gate is securely in place.
- Do not use gate if any of the components are damaged or missing.
- Wipe surface with a damp cloth or sponge, using mild detergent and warm water to clean. Towel dry.

replacement parts: hardware kit #33160-05



To order a replacement hardware kit, please call our Consumer Relations Team at 1-401-671-6551.



**We're here to help!** If you have any questions or need assistance, please contact our Consumer Relations Team at **1-401-671-6551** or **www.summerinfant.com/contact**

**Summer Infant (USA), Inc.**  
1275 Park East Drive  
Woonsocket, RI 02895 USA  
1-401-671-6551  
© 2018 Summer Infant (USA), Inc.

Please retain information for future reference.  
Colors and styles may vary.  
**Made in Mexico with imported parts.**  
08/18



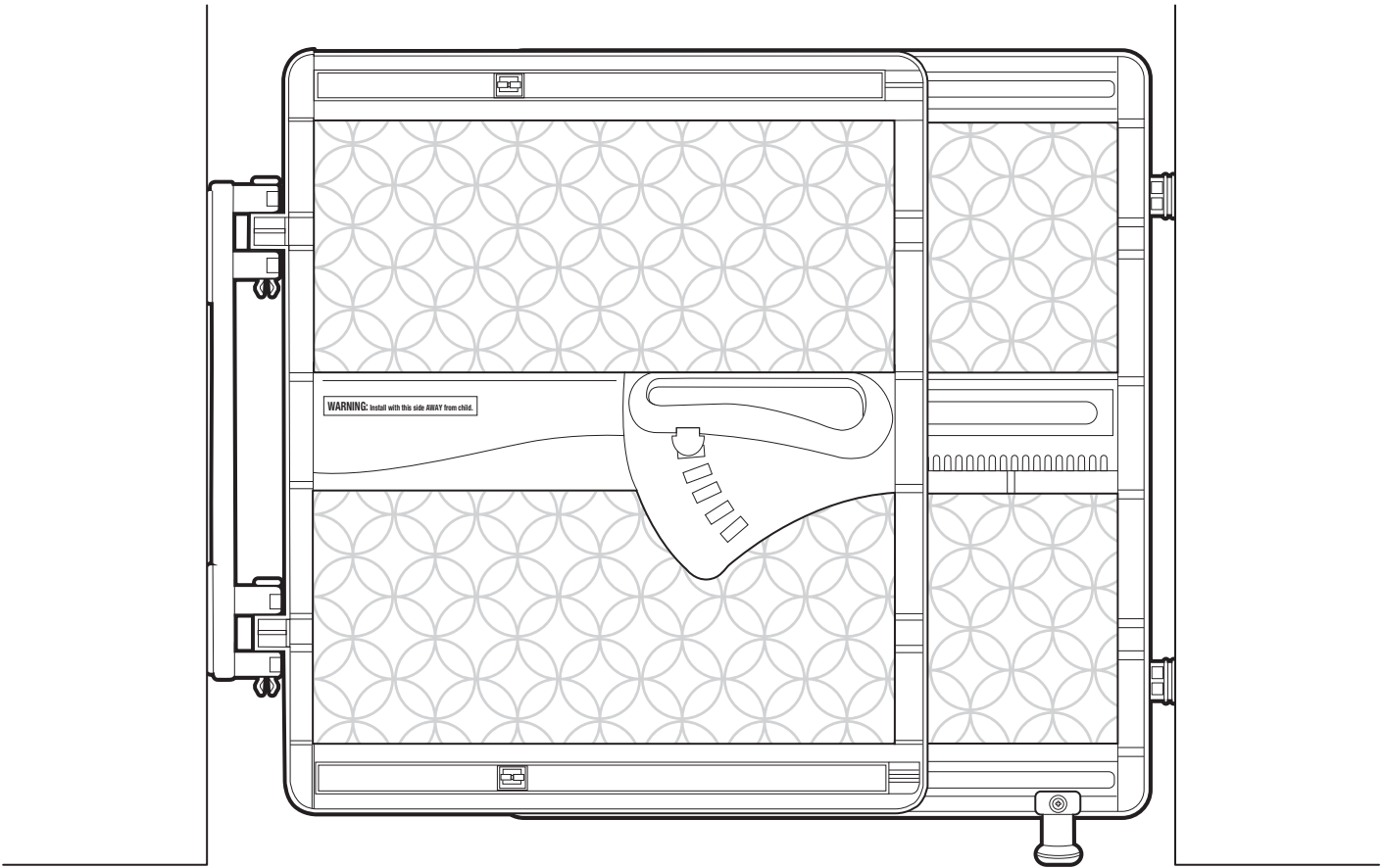
Please read the following instructions carefully.  
Keep this instruction manual for future reference.  
Tools required for Top of Stairs installation only, see Page 8.  
For technical support, contact us at **1-401-671-6551** or **www.summerinfant.com/contact**

For use with children from 6 - 24 months.  
Keep small parts away from children.

Adult assembly required.

Fits openings from 26 in. - 41 in. wide without hinge.  
Fits openings from 27.5 in.- 42 in. with hinge.

**(IMPORTANT: Remove cable ties before use)**



**Indoor & Outdoor Multi Function Walk-Thru Gate**  
**OWNER'S MANUAL**

**We're here to help!** If you have any questions or need assistance, please contact our Consumer Relations Team at **1-401-671-6551** or **www.summerinfant.com/contact**

## ! WARNING

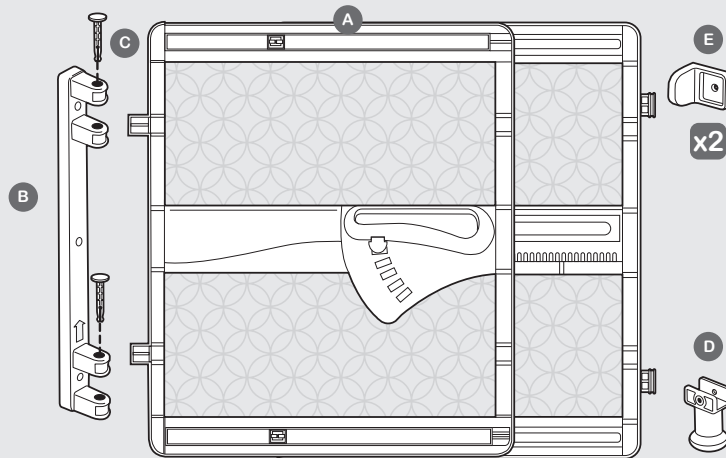
- Children have died or been seriously injured when gates are not securely installed.
- **ALWAYS** install and use gate as directed using all required parts.
- **STOP** using when a child can climb over or dislodge the gate.
- Use only with the locking/latching mechanism securely engaged.
- Install with locking mechanism on side **AWAY** from child.
- To prevent falls, never use at top of stairs without door stoppers and hinge installed with screws.
- To prevent falls, never use at top of stairs in pressure mount mode or adhesive only mount option for hinge installation.
- Always mount door stoppers with stoppers on stair side of gate.
- **NEVER** use to keep child away from pool.
- **NEVER** leave child unattended.
- Always close and lock the gate behind you.
- This product will not necessarily prevent all accidents.
- Proper adult supervision is required at all times.
- Do not use if any components are missing or damaged.
- Adult assembly required. Exercise care when unpacking and assembling product.

**CAUTION:** Keep small parts out of child's reach.

Important – Read the instructions carefully before use and keep them for future reference.

## components:

- A Gate Assembly
- B Gate Hinge
- C Gate Hinge Pins
- D Foot
- E Door Stopper
- F Foot Binding Post Screw
- G Wood Screws
- H Drywall Anchors
- I Adhesive Hinge Pads

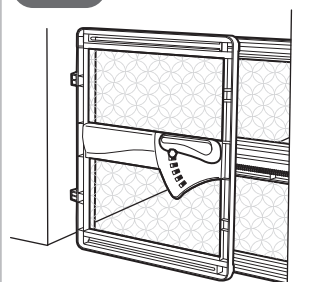


### hardware:



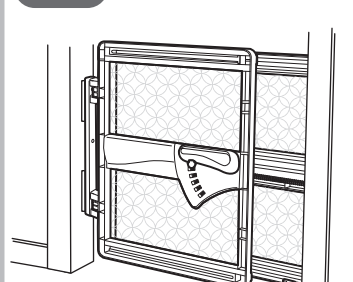
## gate mounting methods (choose which best fits your scenario):

### A Pressure Mount Installation (page 3)



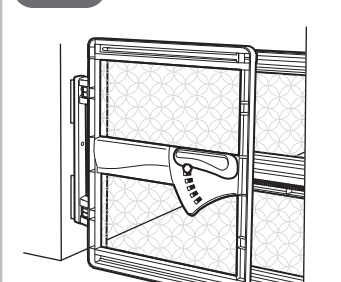
- For use with either wood or drywall.
- Use between rooms only. (No drilling necessary).

### B Adhesive Installation (page 4)



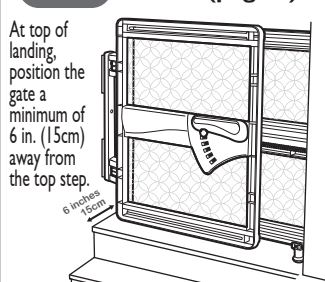
- For use with wood only.
- Use between rooms only. (No drilling necessary).

### C Drywall Installation (page 6)



- For use between rooms where only drywall is available. (Drilling required).

### D Top of The Stairs Installation with screws (page 8)

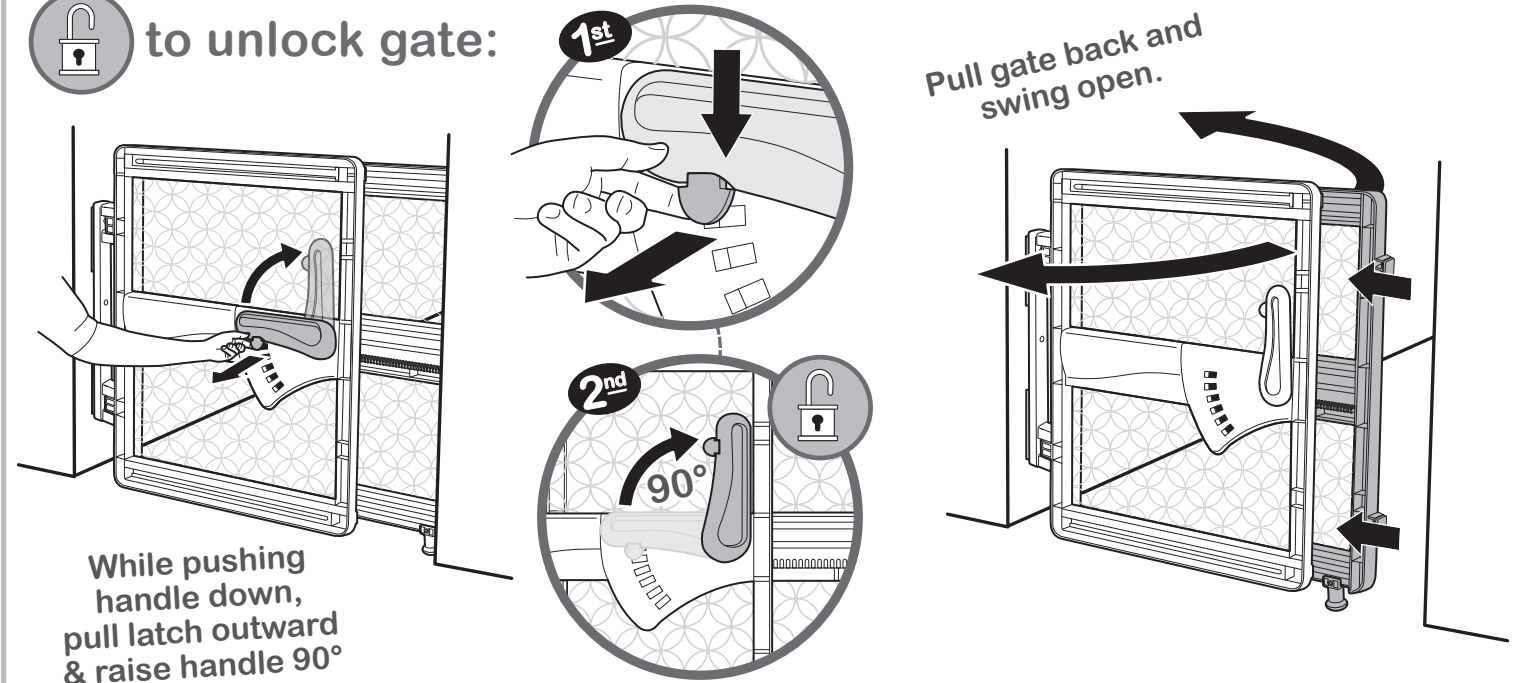


- For use with either wood or drywall.
- Must use in conjunction with door stoppers. (Drilling required).

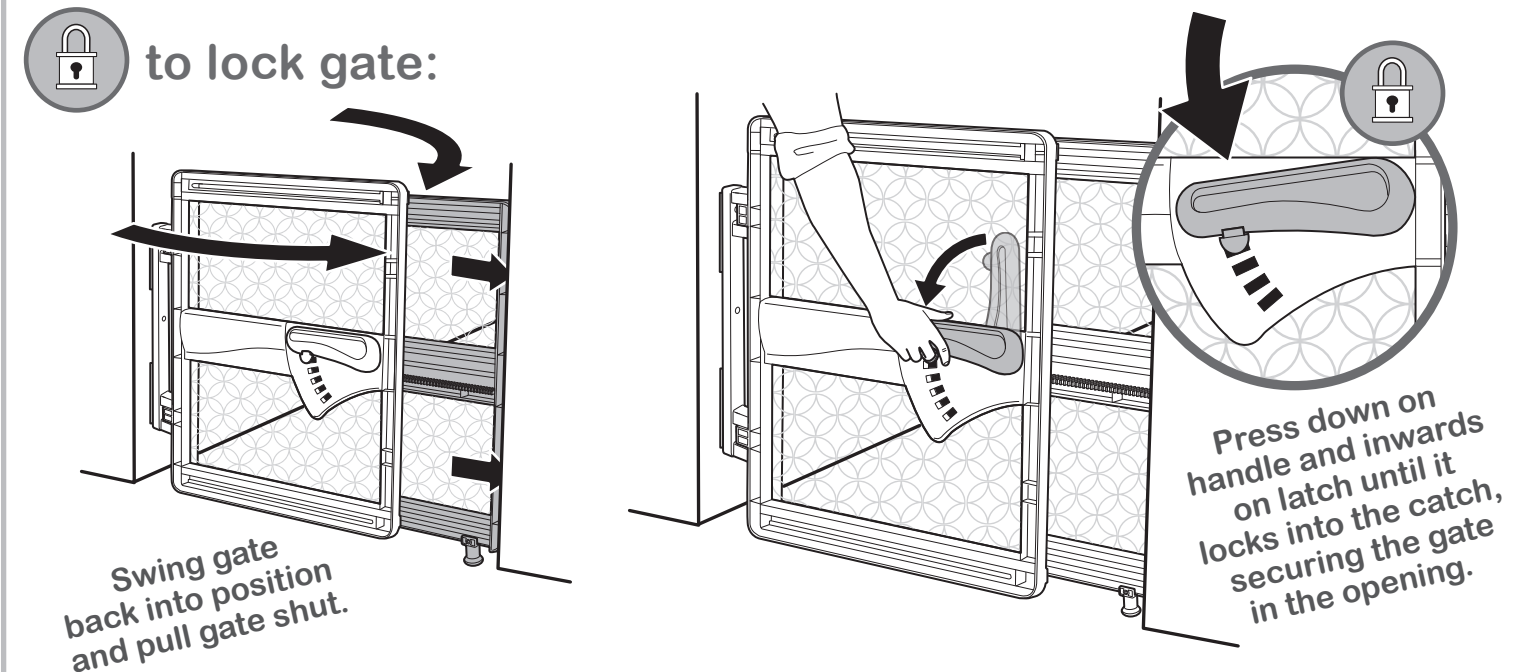
## gate operation:



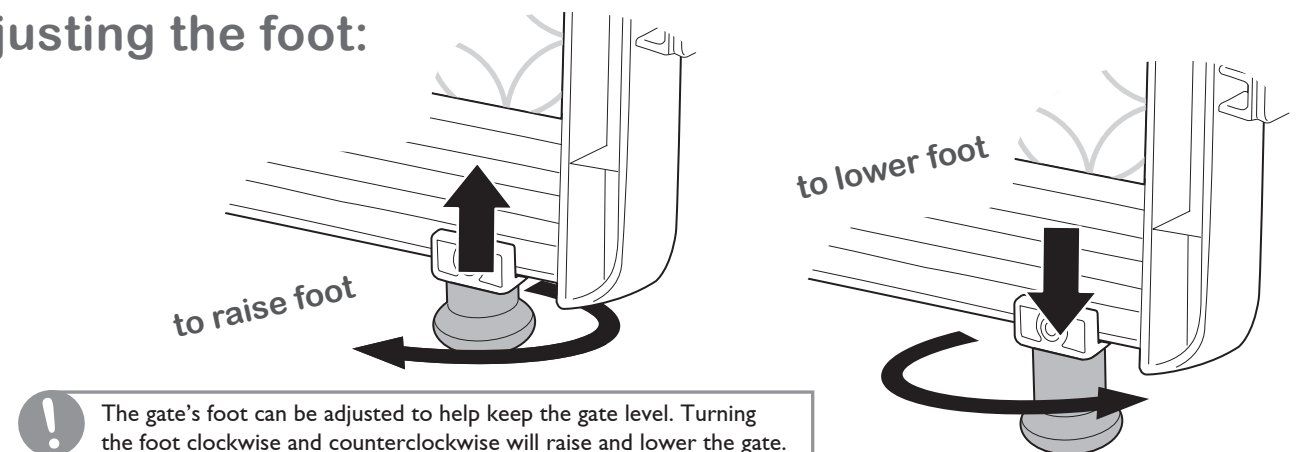
### to unlock gate:



### to lock gate:



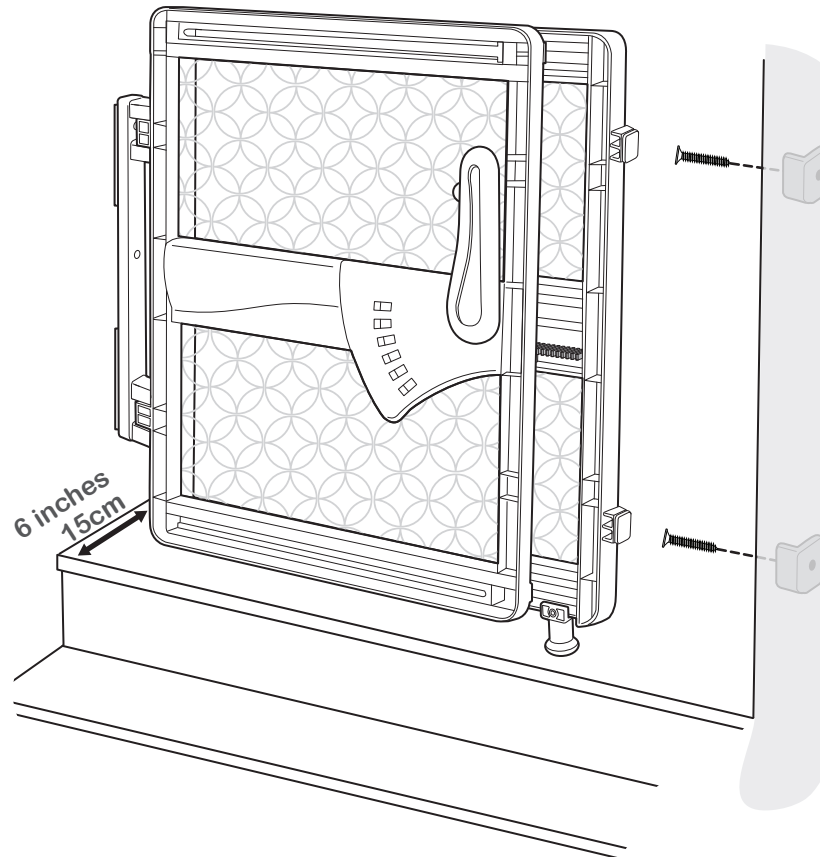
## adjusting the foot:



## top of stairs mount with screws:



**IMPORTANT!** At the top of the landing, position the gate a minimum of 6 inches (15cm) away from the top step.

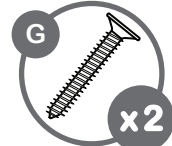


If attaching into wood, attach door stoppers using screws.

If attaching into drywall, drill 7/32 in. pilot holes and attach door stoppers using wall anchors and screws.

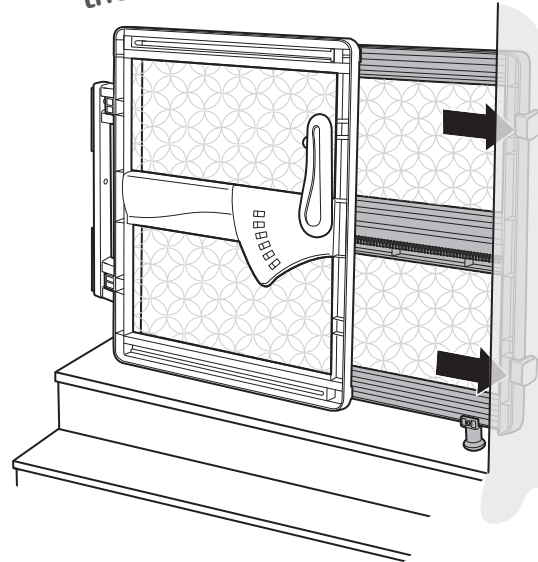
mount method

**D**



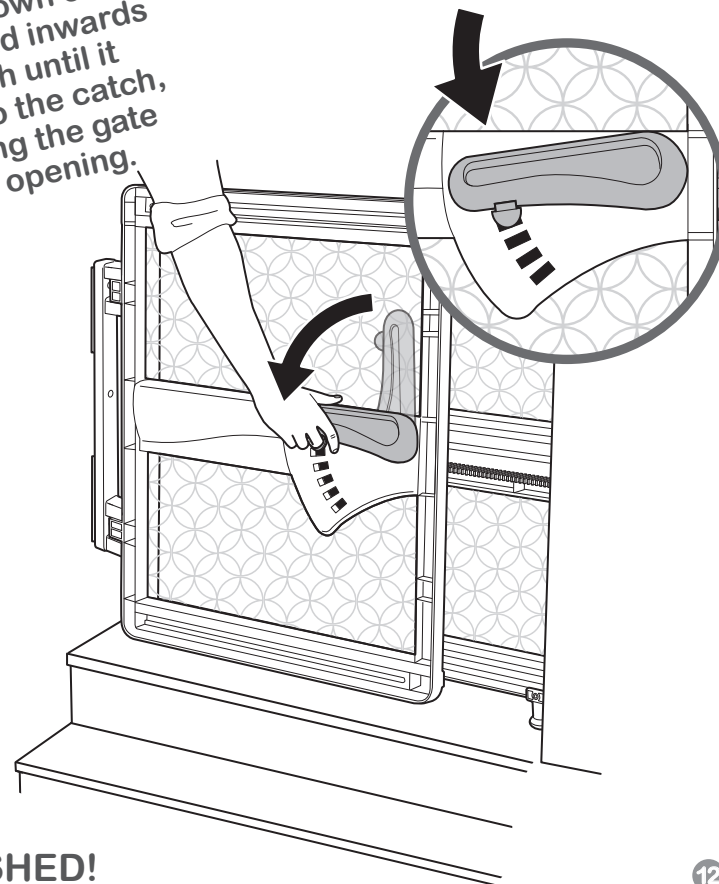
10

Extend the gate and seat it into the door stoppers.



11

Press down on handle and inwards on latch until it locks into the catch, securing the gate in the opening.



**FINISHED!**

12

## pressure mount installation:

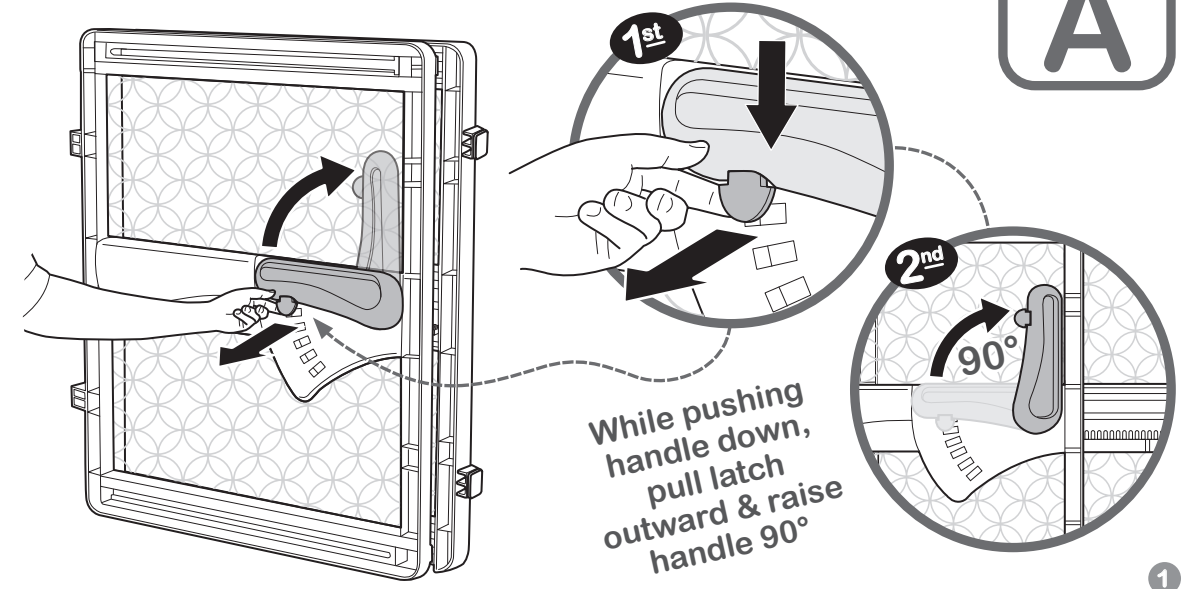
mount method

**A**



### Pressure Mount Installation:

- Use between rooms only.
- Install and remove gate in seconds.

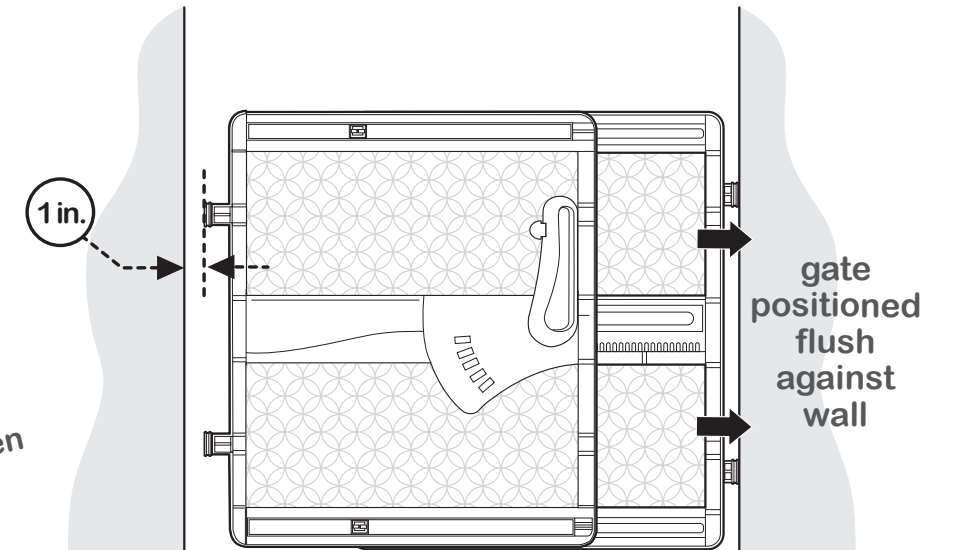


1

Position gate in door frame or between two walls.

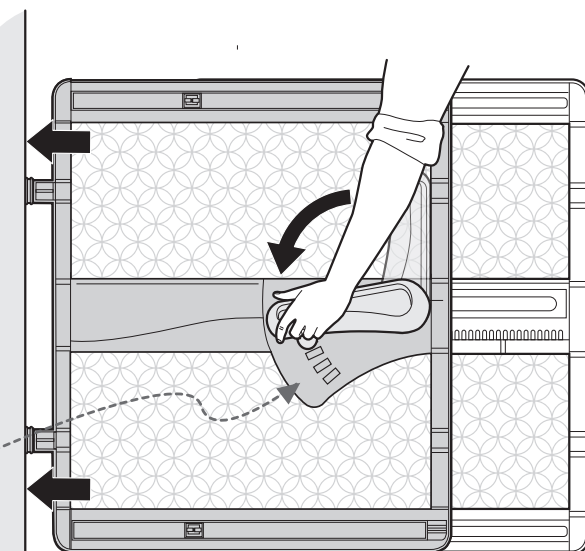
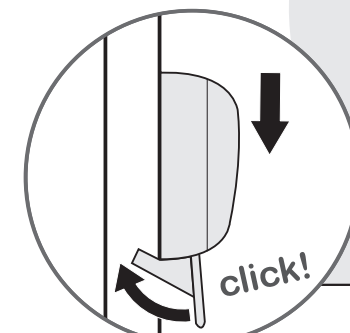
Align the pressure pads opposite to the locking handle against the wall.

For the gate panel with the locking handle, leave a 1 in. gap between the wall and the pressure pads



2

Push down on the handle and push inwards on the latch until it locks into the catch.



Test that the gate is secure by firmly shaking the gate.

If the gate moves, proceed to the next lock setting--or until the gate is properly secure in the opening.

**FINISHED!**

3

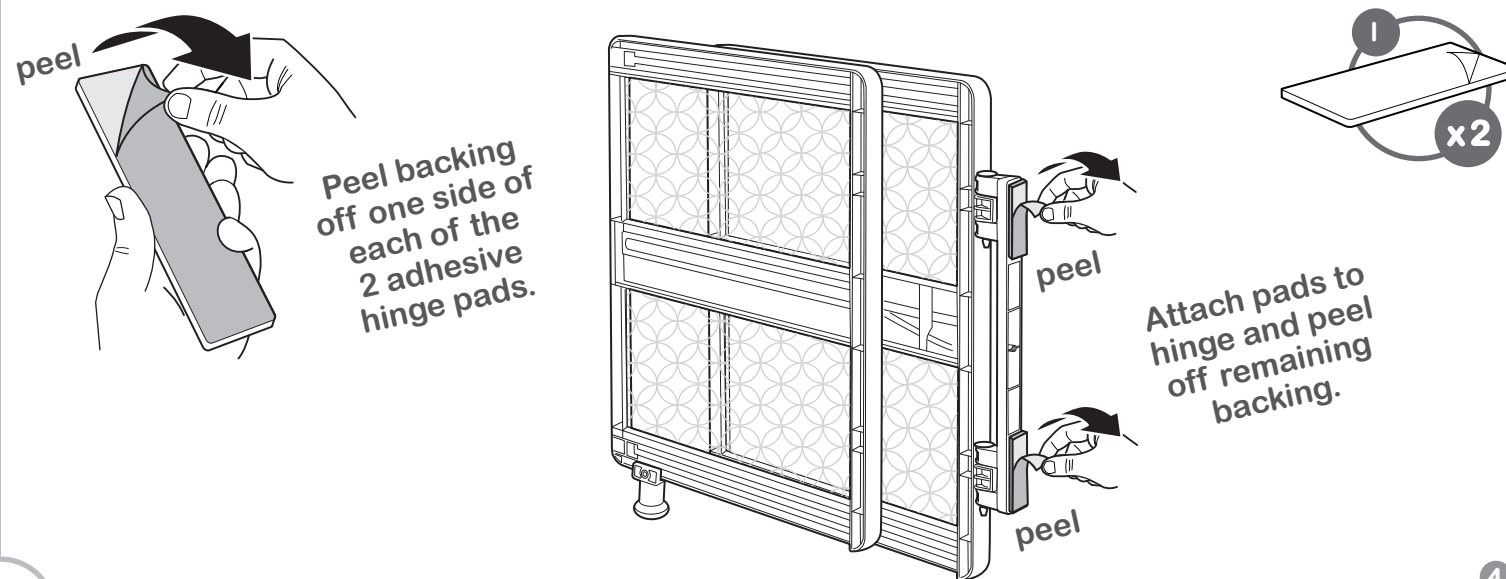
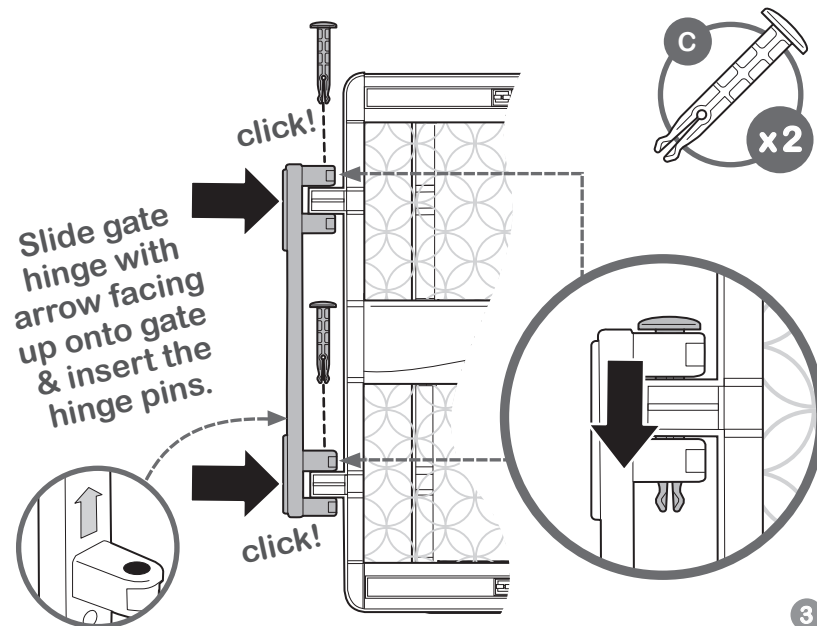
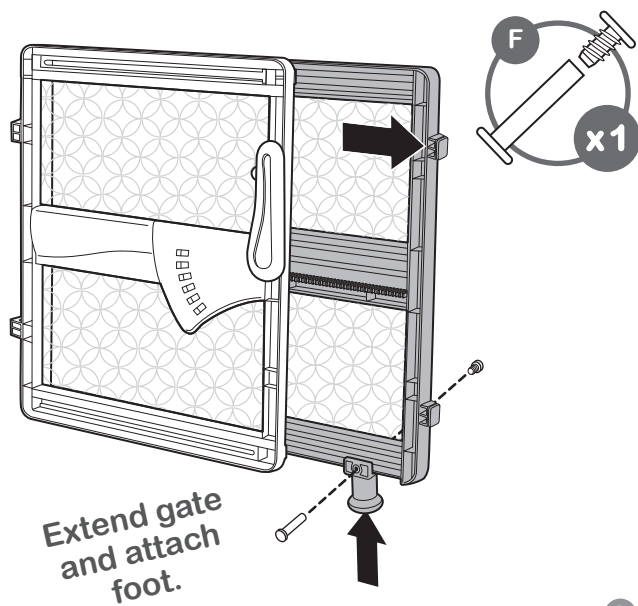
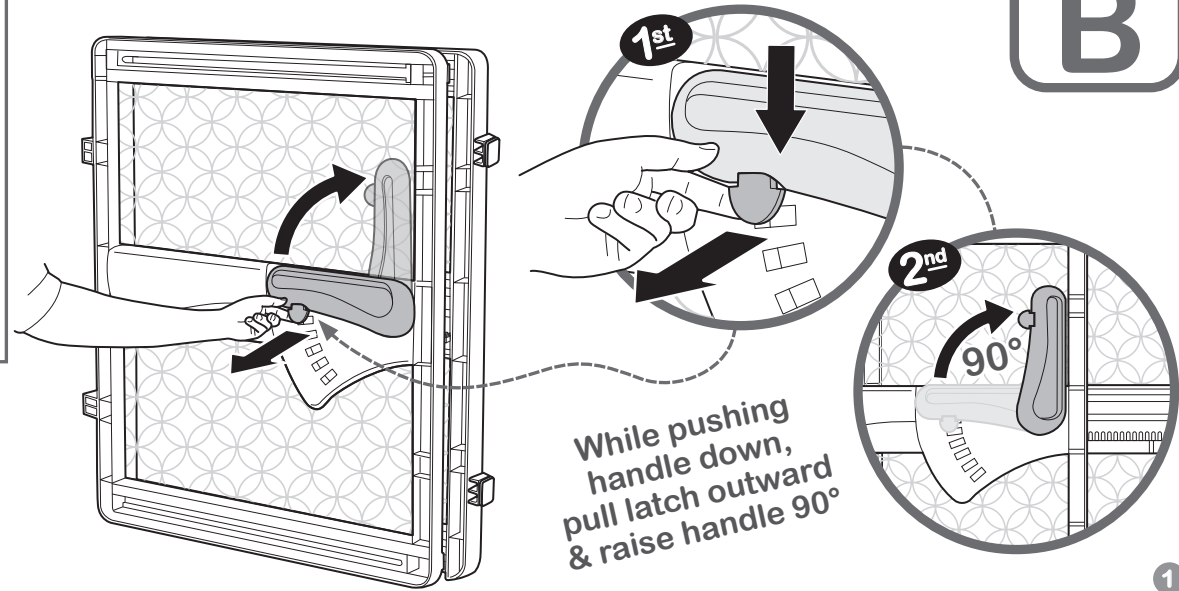
## pressure mount installation (with adhesive only):

mount  
method

**B**

### Pressure Mount Installation (with adhesive only):

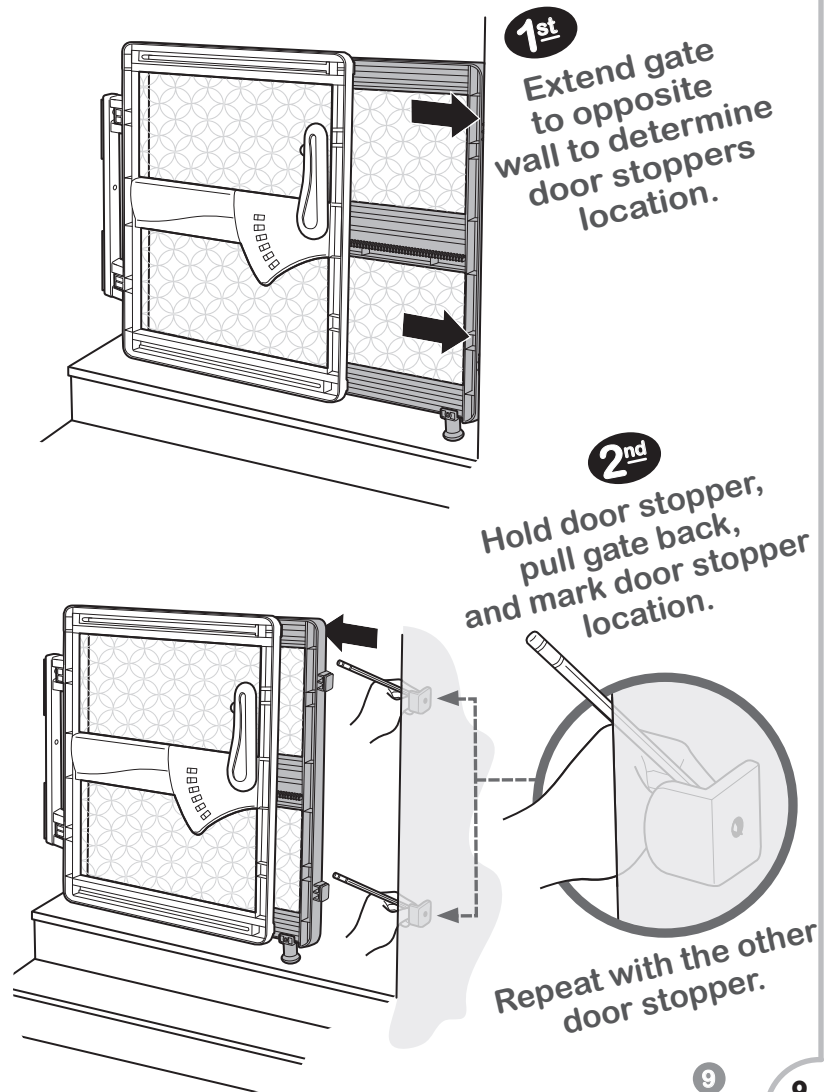
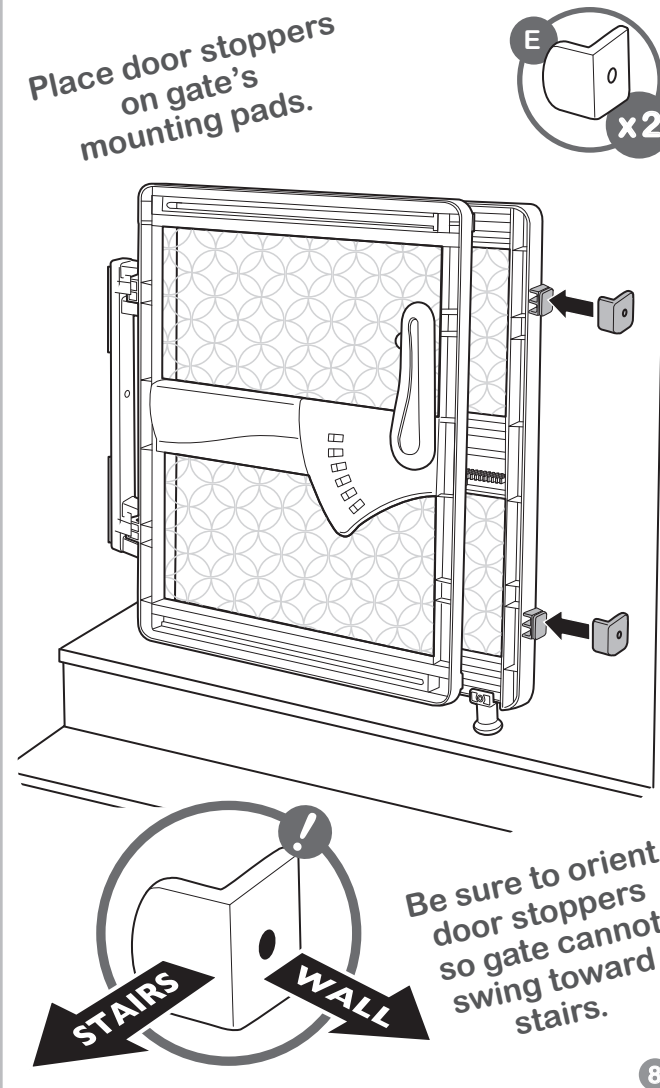
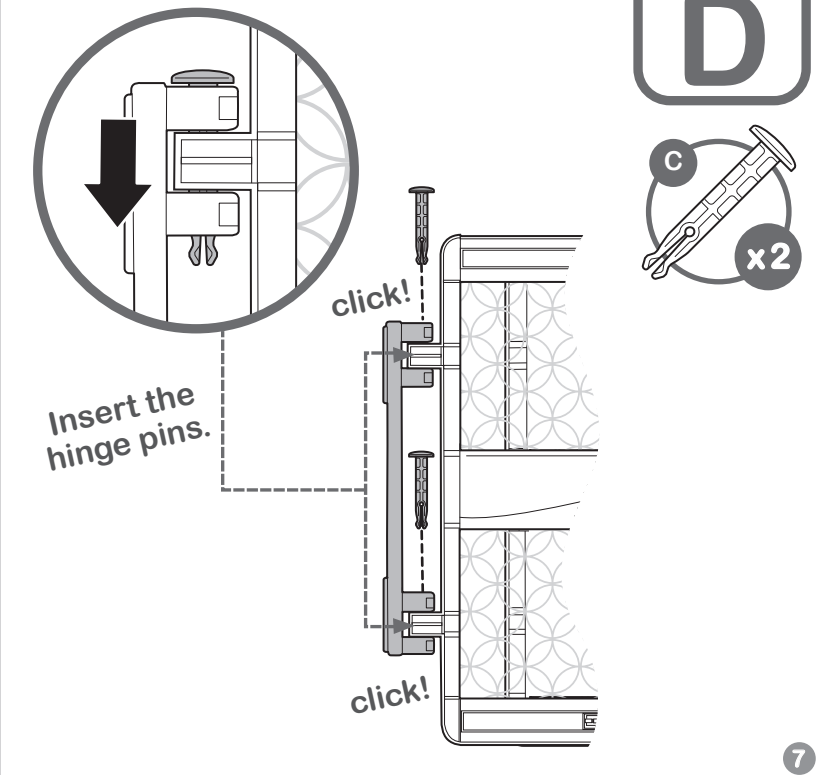
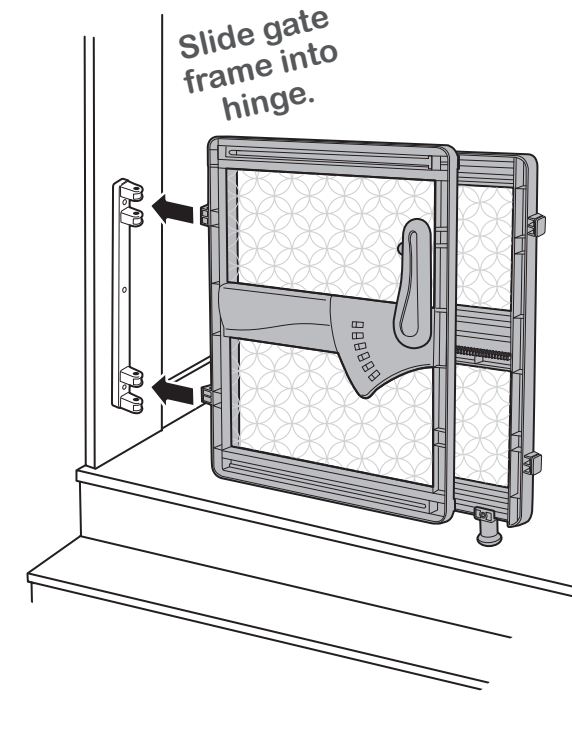
- Allows a swing-open option.
- No drilling necessary.
- Between rooms only.



## top of stairs mount with screws:

mount  
method

**D**



## top of stairs mount with screws:

mount  
method

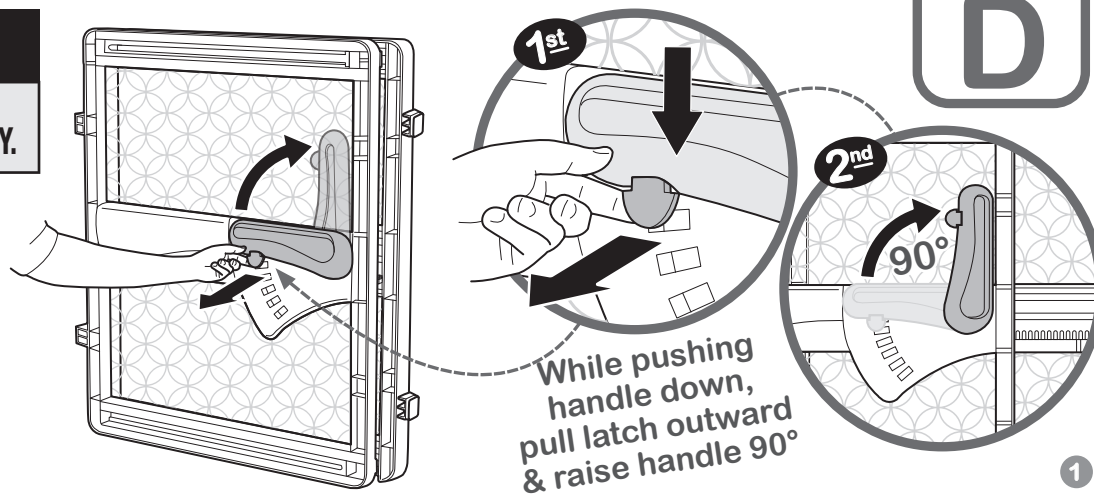
**D**

### ⚠ WARNING

For use at top of stairs, door  
stopper installation is **MANDATORY**.

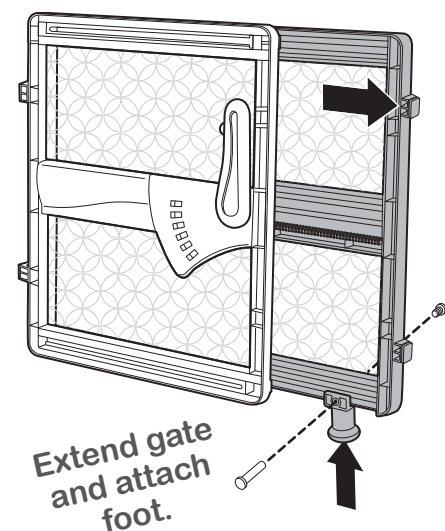
#### ! Top Of Stairs Installation:

- Use on drywall or wood  
with screws.
- At top of landing,  
position the gate a  
minimum of 6 in. (15cm)  
away from the top step.



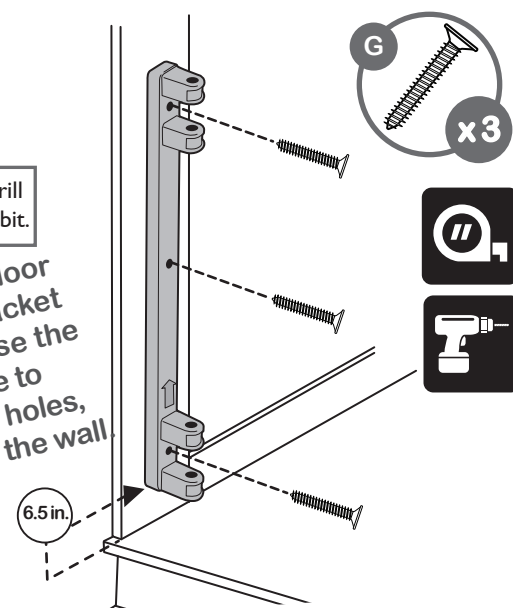
#### IMPORTANT!

**Wood Mount:**  
If attaching hinge directly into  
wood, go to step 3.



**Note:** ALWAYS pre-drill  
holes using a 1/8 in. drill bit.

Measure 6.5 in. from floor  
to bottom of hinge bracket  
and mark wall. Then use the  
hinge as a template to  
locate the mounting holes,  
using a screw to mark the wall.



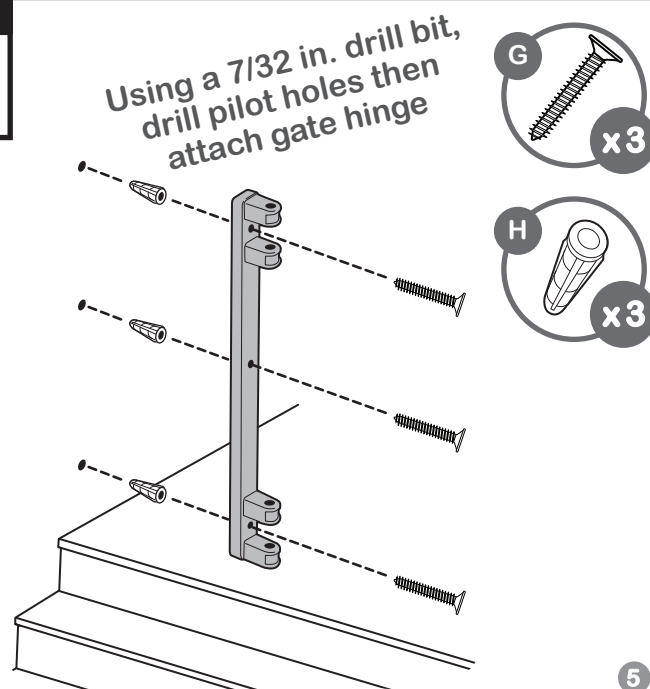
**! Once complete, continue to step 6!**

#### IMPORTANT!

**Drywall Mount:**  
If attaching hinge into  
drywall, go to step 4.

Measure 6.5 in.  
from floor to bottom  
of hinge bracket  
and mark wall. Then use  
the hinge as a template  
to locate the mounting  
holes, using a screw  
to mark the wall.

**Note:** When mounting  
into plaster walls, use wall  
anchors. Using a 7/32 in. drill  
bit, drill pilot holes into the  
wall, insert wall anchors into  
the holes, and tap gently on  
end with a hammer until the  
wall anchor is flush with the wall.

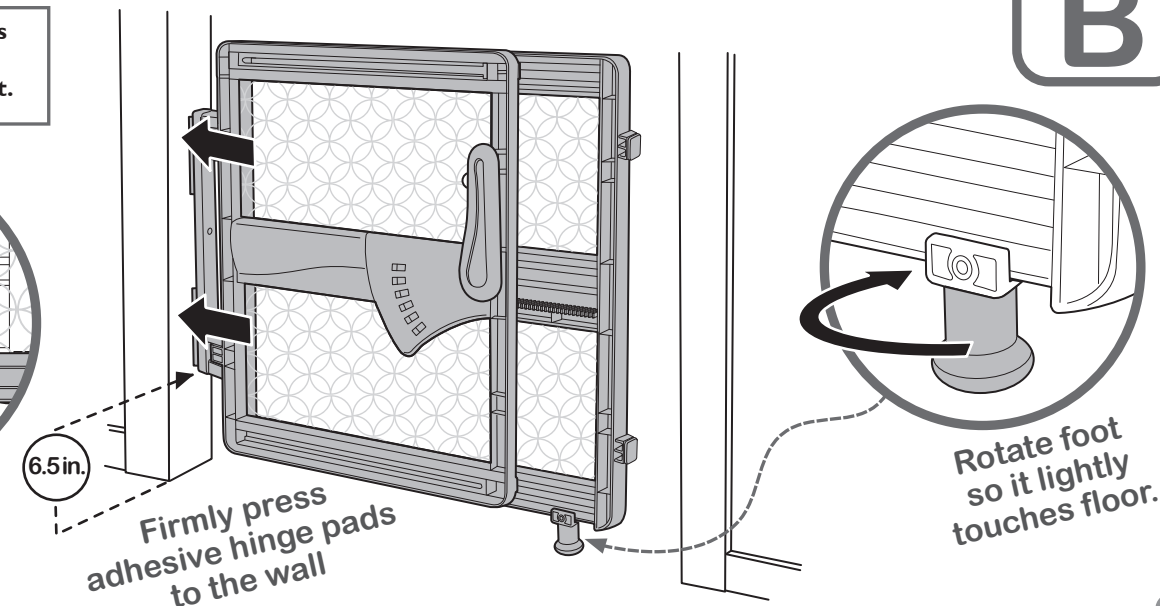
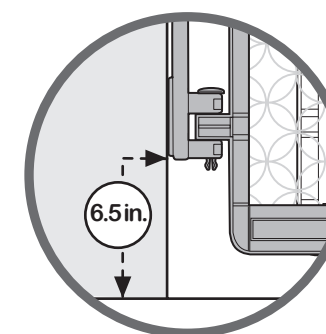


## pressure mount installation (with adhesive only):

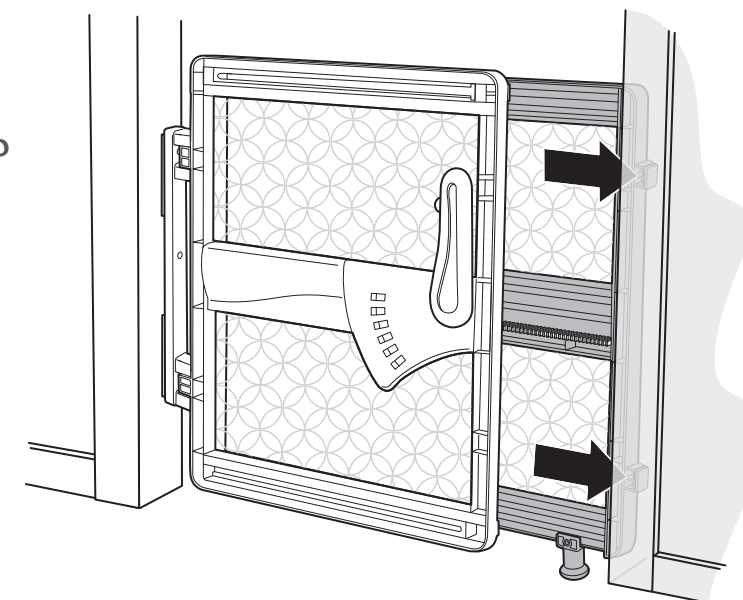
mount  
method

**B**

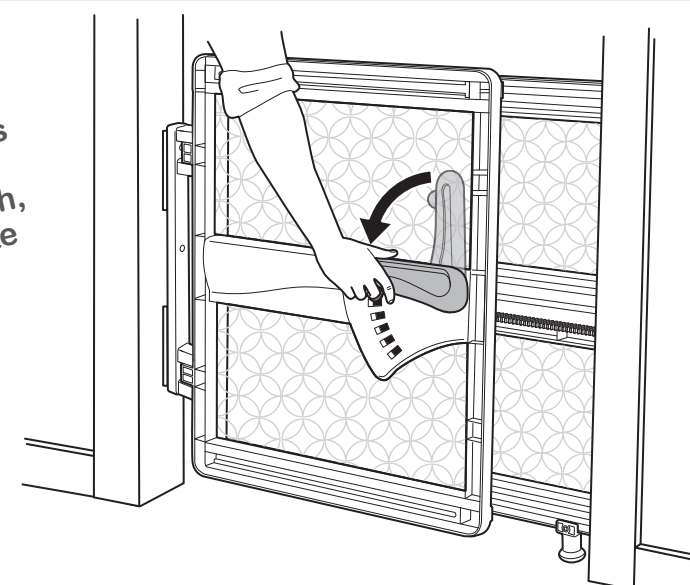
**!** Install gate so there is  
6.5 in. from floor to  
bottom of hinge bracket.



Extend gate panel to  
the opposing wall.



Press down on  
handle and inwards  
on latch until it  
locks into the gate,  
securing the gate  
in the opening



Test that the  
gate is secure by  
firmly shaking  
the gate. If the  
gate moves,  
proceed to the  
next lock  
setting or until  
the gate is  
properly secure  
in the opening.

**FINISHED!**

**5**

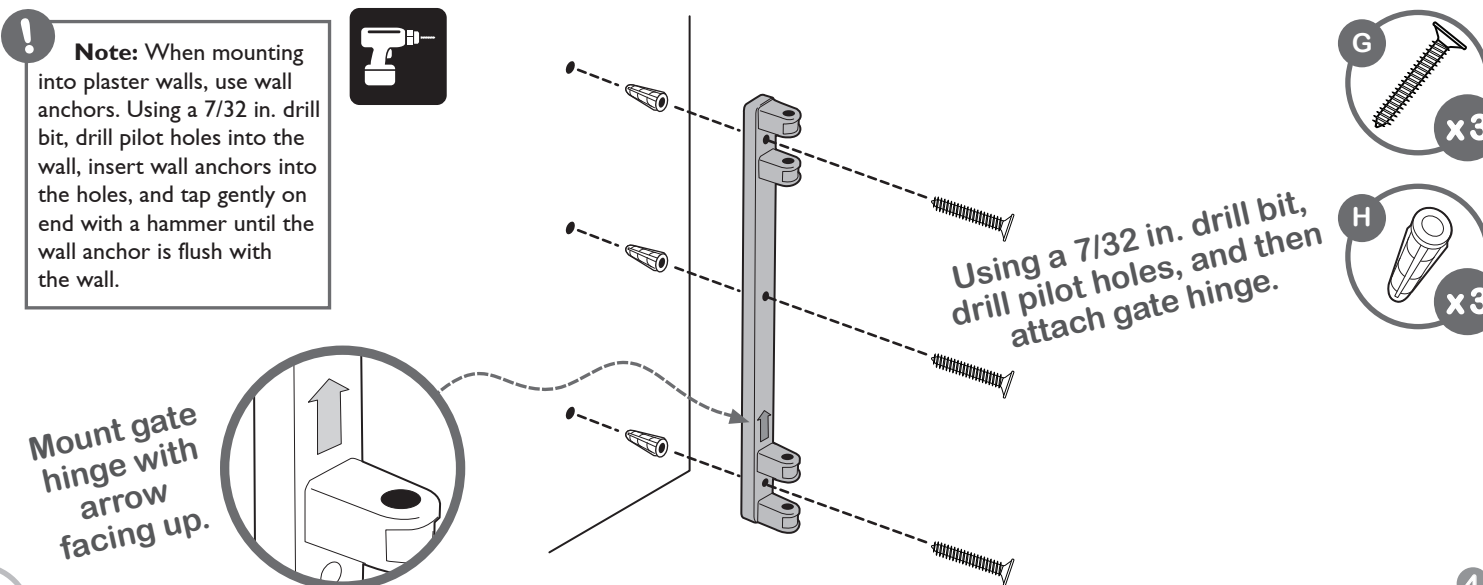
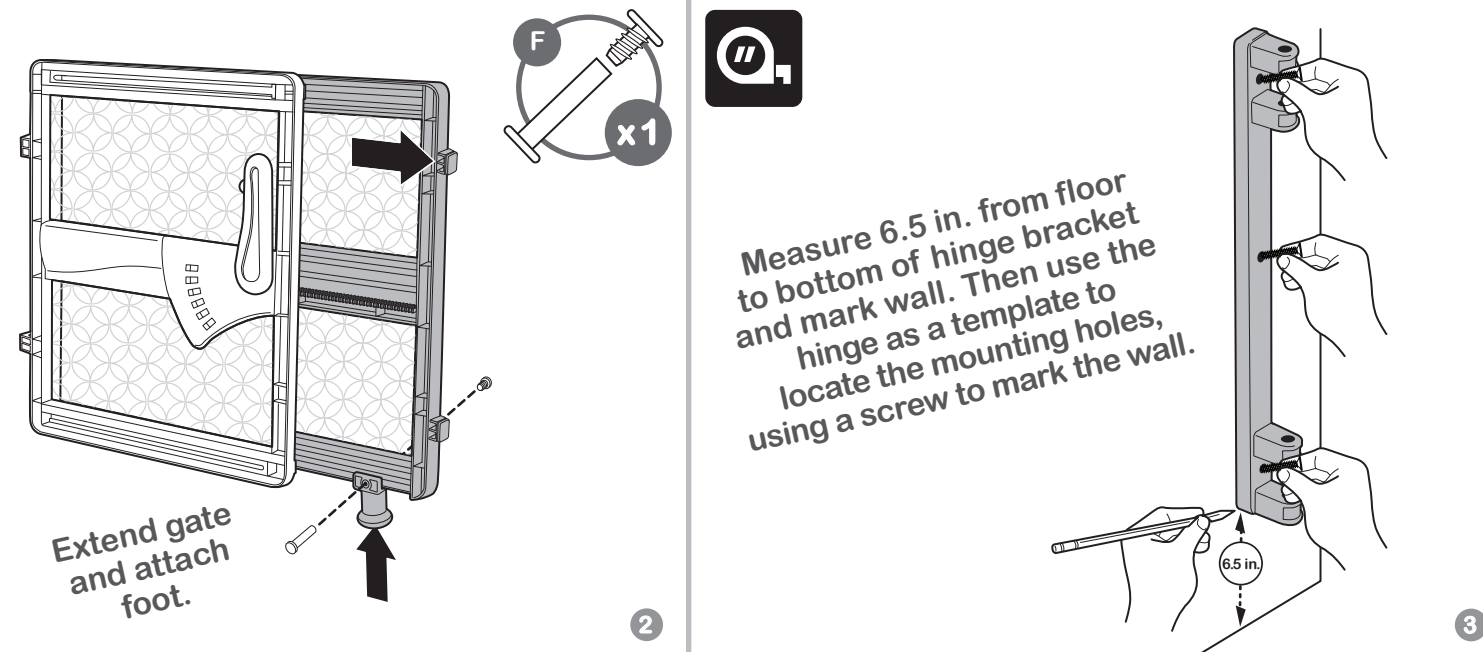
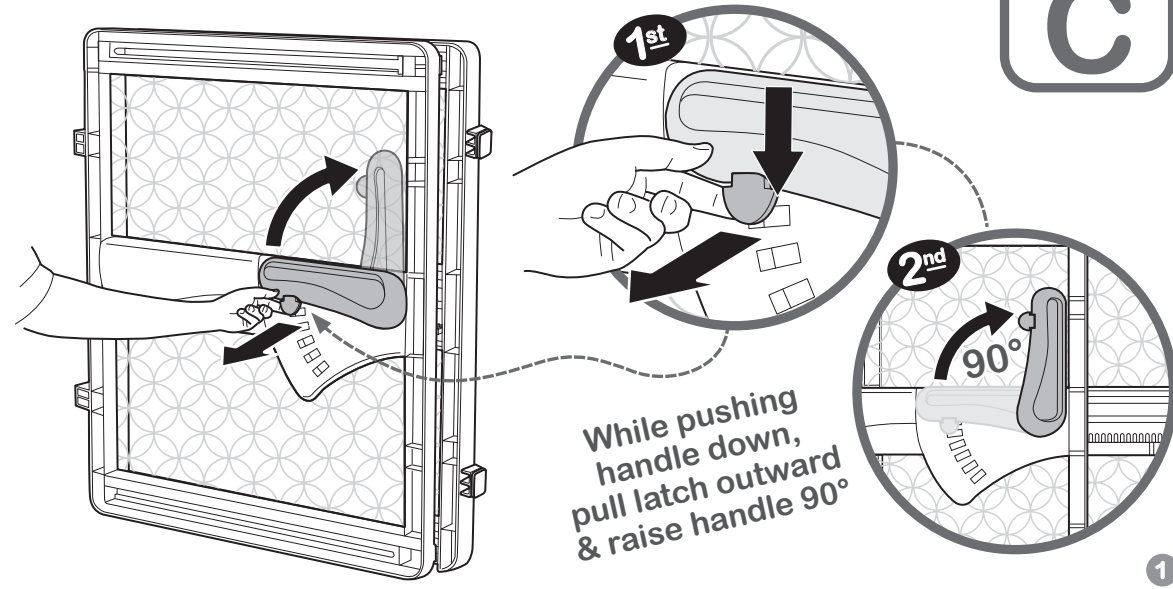
## hardware mount (for drywall):

mount  
method

C

### ! Hardware Mount Installation (for drywall):

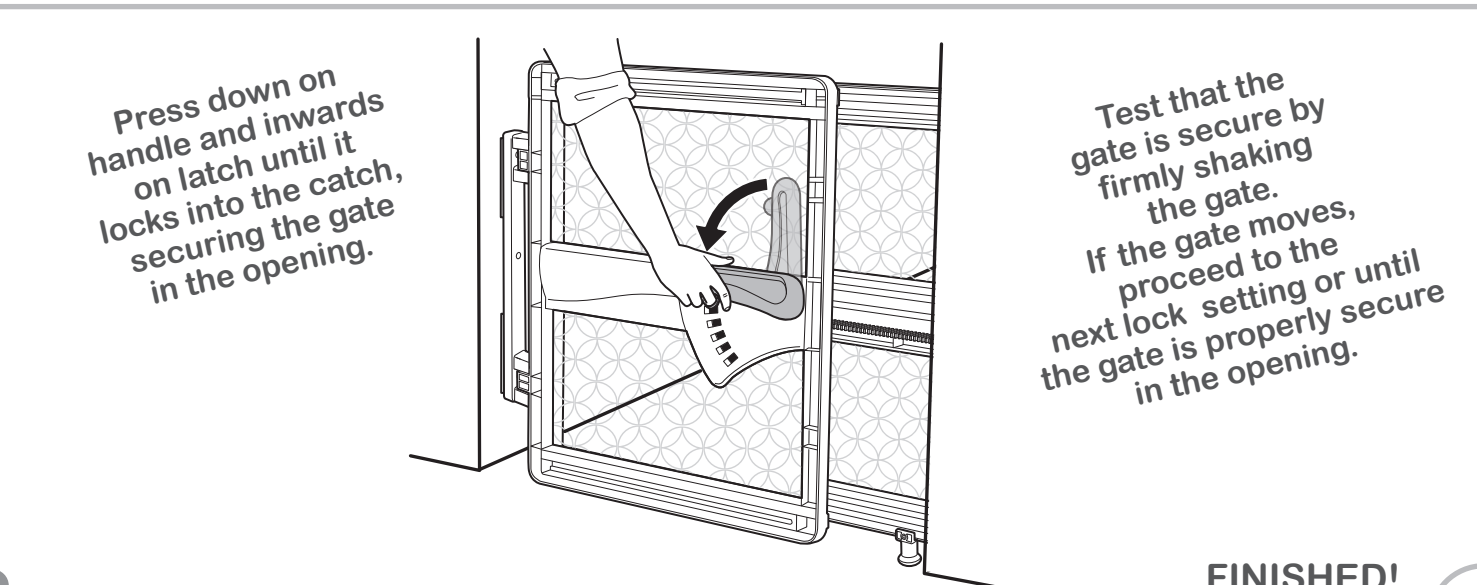
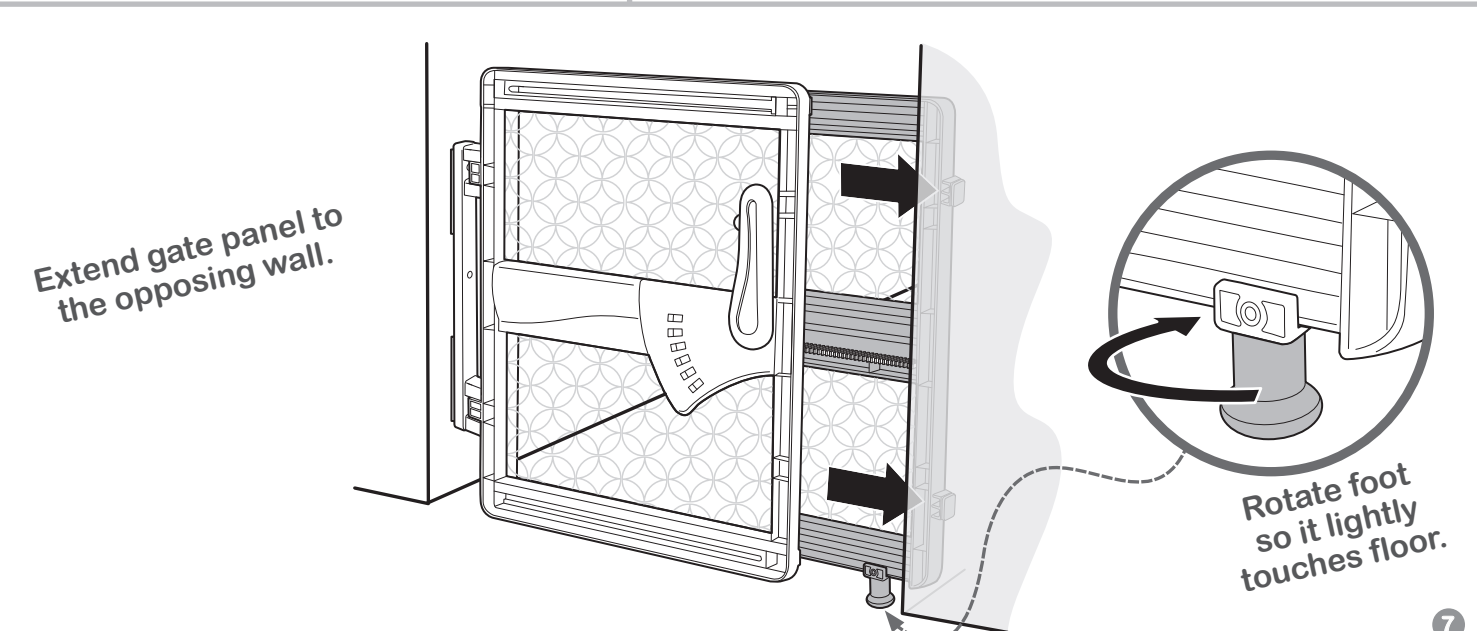
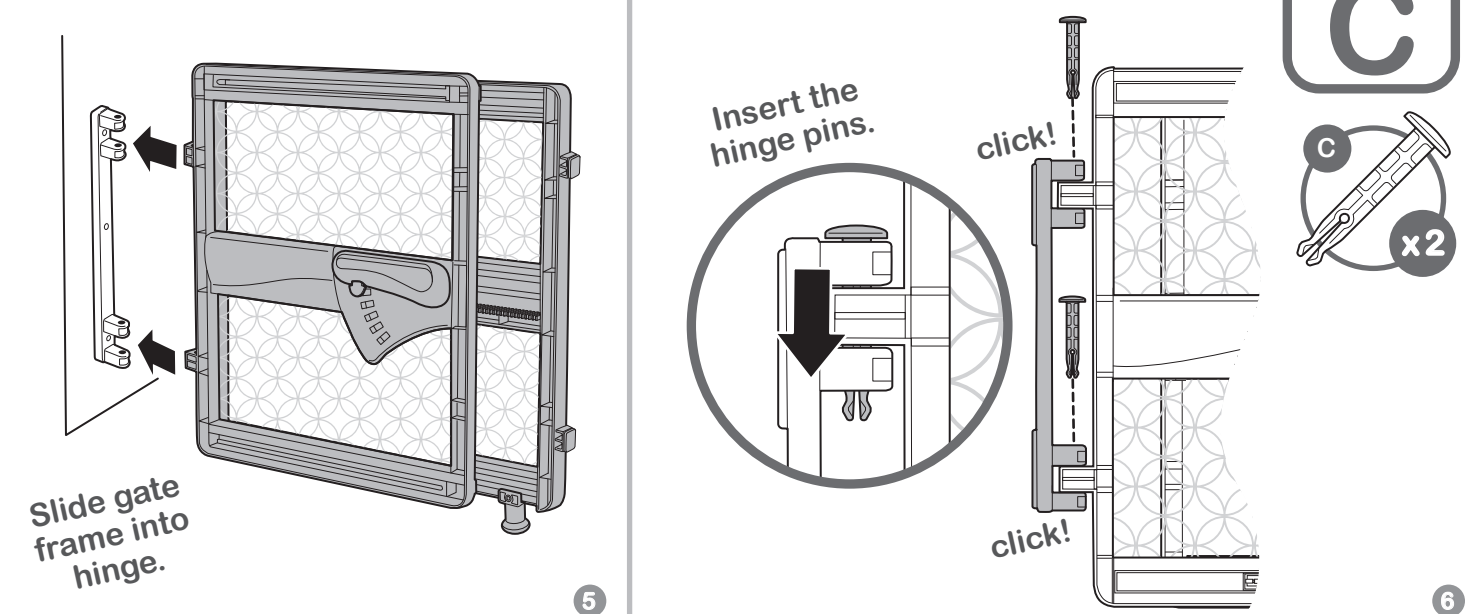
- Use between rooms where only drywall is available.



## hardware mount (for drywall):

mount  
method

C



FINISHED!