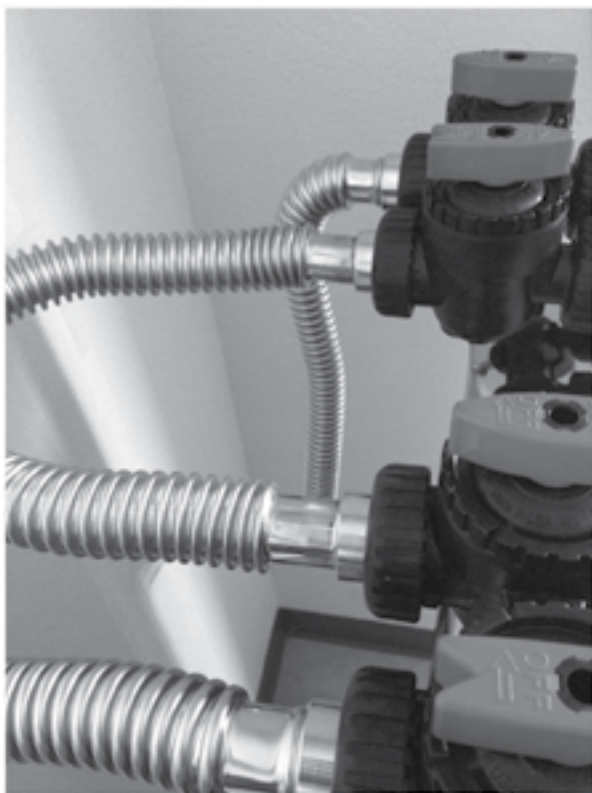




WHOLE HOUSE INSTALLKIT-DUAL-P (COMBO SYSTEM)

PSE1800-P | PSE2000-P

Installation Instructions



PARTS OF THE SYSTEM

- A) One (1) Roll of plumber's tape
- B) One (1) John Guest 1" Male NPT Connector
- C Three (3) John Guest 1" NPT to Stem
- D) Two (2) 1" John Guest to Clack 24" Stainless Flex Pipe
- E) One (1) Clack to Clack 18" Stainless Flex Pipe
- F) Four (4) Threaded Collars (Preassembled)
- G) Four (4) Split Rings (Preassembled)
- H) Four (4) O-rings (Preassembled)



Special Note for PVC Customers: John Guest fittings will only connect to copper, cPVC and PEX pipe materials. For your convenience, we have included two (2) additional John Guest 1" NPT to Stem to convert your PVC pipes to the Pentair Pro Kit. Simply insert the stem ends of each fitting into the John Guest ends of the Flex Pipe and Inlet side of the prefilter and thread your PVC to the 1" Male threaded NPT end of the stem fitting.



Notice

Before starting this step, be sure to have your prefilter housing mounted following the instructions that came with the system you purchased.

- Wrap plumber's tape 1-2 times around the threaded end of the John Guest 1" Male NPT Connector (we recommend applying pipe dope as well).
- Thread (B) John Guest 1" Male NPT connector Fitting onto Inlet side of prefilter housing.
- Hand-tighten and follow with 1-2 turns using a wrench.
- Wrap plumber's tape 1-2 times around the threaded end of (C) John Guest 1" NPT to Stem.
- Thread (C) John Guest 1" NPT to Stem to the Outlet side of the prefilter housing.
- Hand-tighten and follow with 1-2 turns using a wrench.

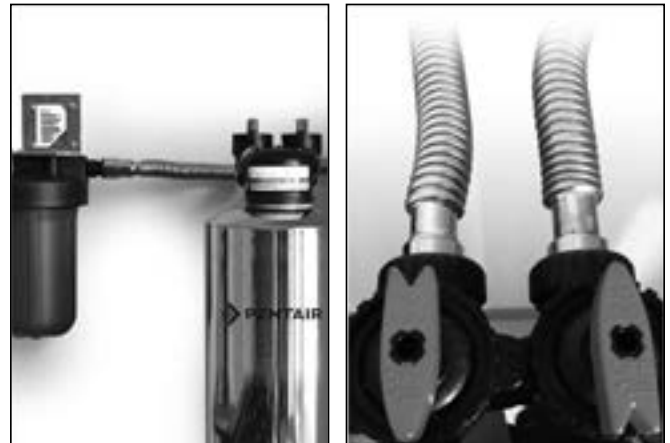
Prepare Prefilter



FINAL INSTALLATION

- Bring main cold water line from street and plug into John Guest connection on Inlet side of prefilter.
- Pull out slightly after inserting to ensure a solid connection.
- Turn collar on fitting clockwise to lock in place.
- Push John Guest Quick-Connect End of 24" Stainless Flex Pipe into the Outlet Male Stem of the prefilter.
- Pull out slightly to ensure a good seal.
- Attach Clack quick-connect end of 24" Stainless Flex Pipe to side of Carbon Tank Bypass. Hand tighten only.
- Attach Clack quick connect ends of 18" Stainless Flex Pipe to Carbon Tank, hand tighten only.
- Attach second Clack quick connect end of 18" Stainless flex to side of Natursoft® Tank, Hand tighten only.
- Attach Clack quick connect end of 24" Stainless Flex Pipe to Outlet side of Natursoft Tank Bypass. Hand tighten only.
- Push John Guest connection end of 24" Stainless Flex Pipe into water line going into the home.
- Pull slightly to ensure a proper seal.

Final Installation



For details on your Pentair product warranty, please visit pentair.com/assets/residential-filtration-warranty.



2361 Mason Ave | Suite 100 | Daytona Beach, FL 32117 | United States
P: 877.842.1635 | Technical Services: 877.842.1635 | pentair.com/homewater

© 2021 Pentair. All indicated Pentair trademarks and logos are property of Pentair. Third party registered and unregistered trademarks and logos are the property of their respective owners.

4006096 Rev A MY21