



**WARNING**

PLEASE READ ALL SAFETY WARNINGS AND INSTRUCTIONS CAREFULLY. PLEASE INSPECT ITEM CAREFULLY BEFORE INSTALLING.





**QUICK RESPONSE SERVICE**



We constantly strive to provide the high-quality products and excellent customer service to achieve our customer satisfaction.

**SPECIFICATION PARAMETERS**

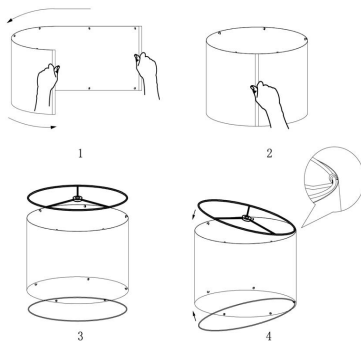
\* Material: Metal and Fabric

**PACKING LIST**

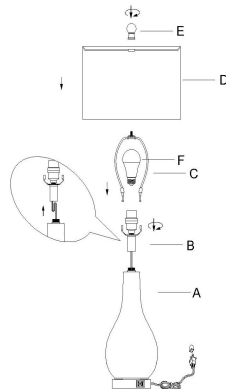
PIECE	DESCRIPTION	PICTURE	QUANTITY
A	Lamp Body		2X
B	Socket Assembly		2X
C	Harp		2X
D	Lamp Shade		2X

PIECE	DESCRIPTION	PICTURE	QUANTITY
E	Finial		2X
F	Bulb		2X
G	Bulb		2X

**INSTALLATION STEPS**



- Step 1: Attach the round lampshade  
Step 2: Clip the round metal piece in the hook



- Step 1: Fasten Socket Assembly onto Lamp body  
Step 2: Press the harp(B) onto saddle(A)  
Step 3: Install the bulb(E) on the socket  
Step 4: Assemble the lampshade(C)  
Step 5: screw the finial(D) into the harp(B)

**WARRANTY POLICY**

Warranty: 1 Years Warranty, We provide 24 hour online service, if you have any question, please feel free to contact us.