

Installation Manual

2" Hurry Drain for Walk in Bathtubs

TOTAL CARE IN BATHING

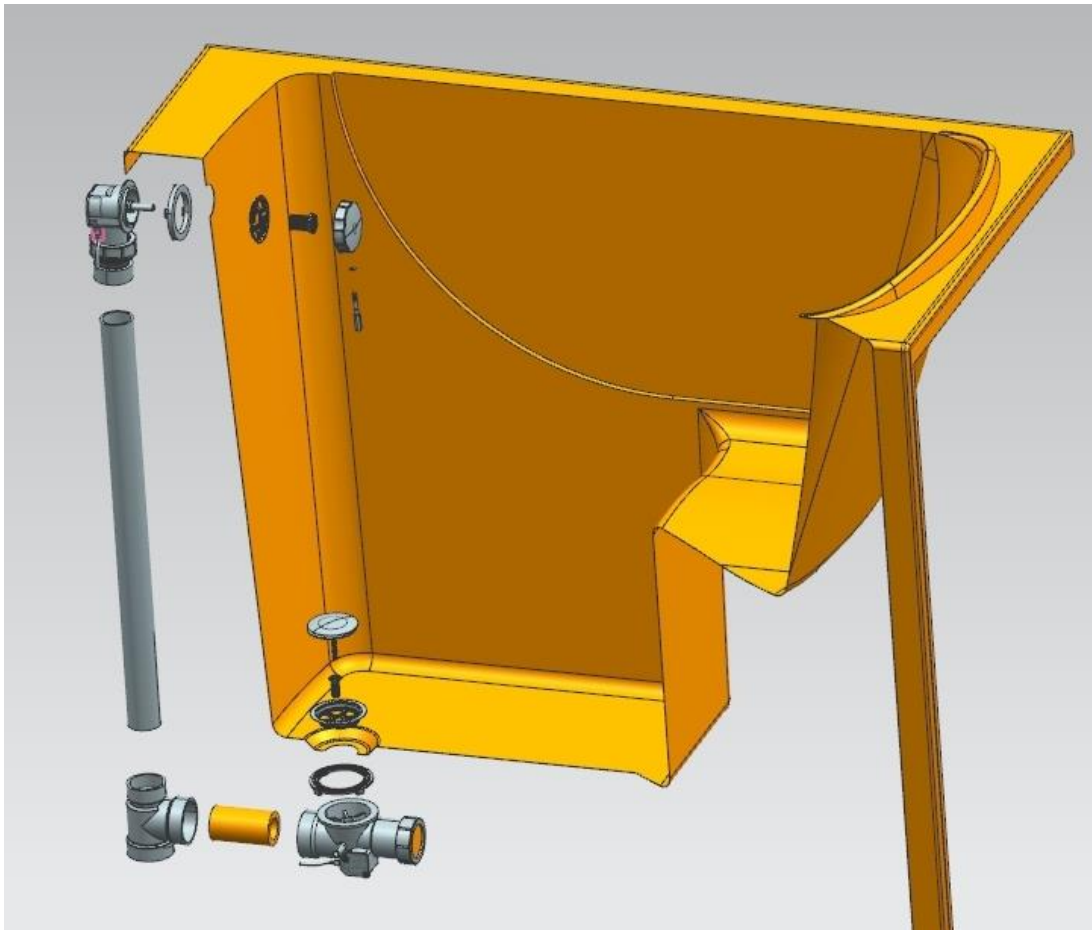


Table of Contents

Parts List of the 2" Hurry Drain for Walk in Bathtub.....	P.2
Tools need for installation.....	P3-4
Overflow Installation.....	P5
Stopper details and adjustment.....	P6
Drain Shoe barb for Door drain Connection.....	P7
Installation-Standard Plumbing to a 1 ½" P-Trap.....	P8-9
Installation-Standard Plumbing to a 2" P-Trap.....	P10-11
Installation-Reverse Plumbing to a 1 ½" P-Trap.....	P12-13
Installation-Reverse Plumbing to a 2" P-Trap.....	P14-15

Parts List of the 2" Hurry Drain for Walk in Bathtub

PARTS NUMBER	PARTS NAME	PARTS MADE OF	PC COUNT
1	Handle Stem	Brass	1
2	O-ring	Silica Gel	1
3	Overflow Drain Handle	Brass/CP	1
4	Hollow Nut	Brass	1
5	Overflow Plate	SS304	1
6	Gasket	Silica Gel	1
7	Top Elbow	PVC	1
8	1-1/2" PVC overflow pipe	PVC	Not included in kit
9	1-1/2" PVC 90 Elbow	PVC	Not included in kit
10	1-1/2" PVC nipple	PVC	Not included in kit
11	2" to 1-1/2" Reducer	PVC	Not included in kit
12	Drain Shoe with Barb	PVC	1
13	Check Valve	PVC	installed on tub
14	Door Drain	PVC	installed on tub
15	Door Drain Cap	PVC	installed on tub
16	1-1/2" PVC pipe	PVC	Not included in kit
17	Compression Nut	PVC	1
18	Compression Washer	NBR	1
19	Flat Gasket	Silica Gel	1
20	Flat Gasket	Silica Gel	1
21	Strainer	SS304	1
22	Hollow Screw	Brass	1
23	Stopper 	Brass	1
24	Block Plates	PVC	1
25	2" Pipe	PVC	Not included in kit
26	2"x2"x1-1/2" Tee	PVC	1

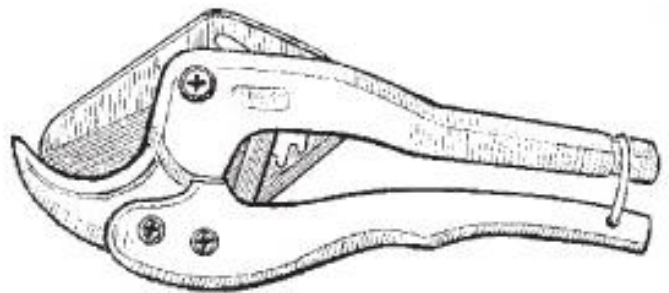
Tools needed for installation



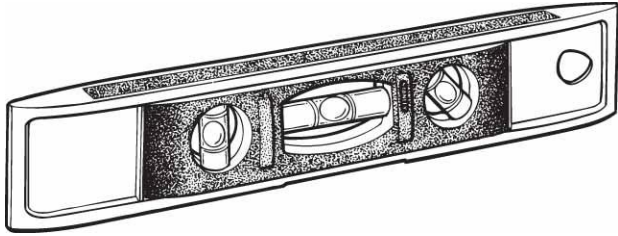
Crescent Wrench



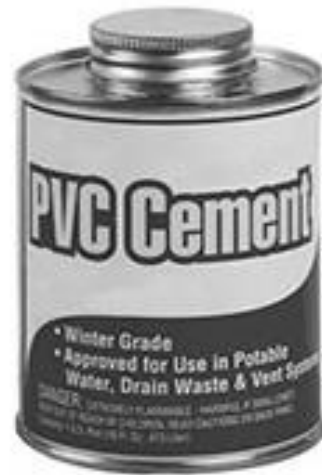
Drill Tool & 1/4" drill bit



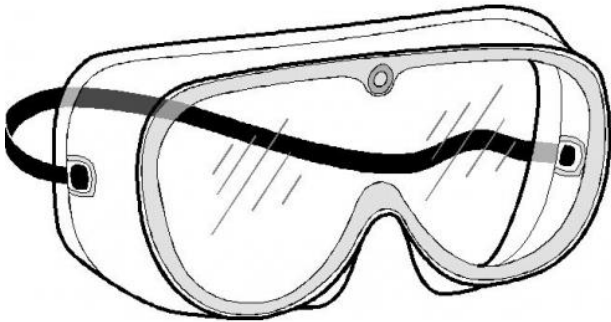
Hack Saw or PVC pipe cutter



Level



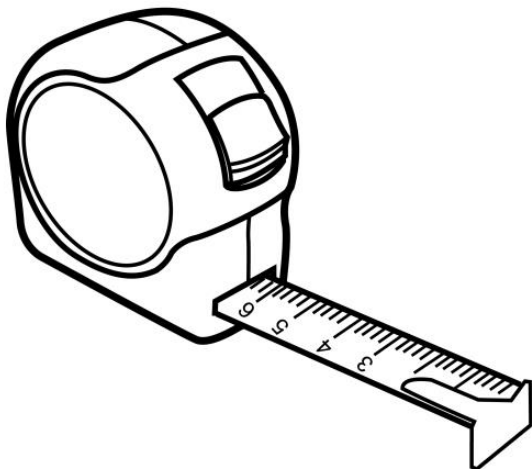
PVC Cement



Safety Goggle

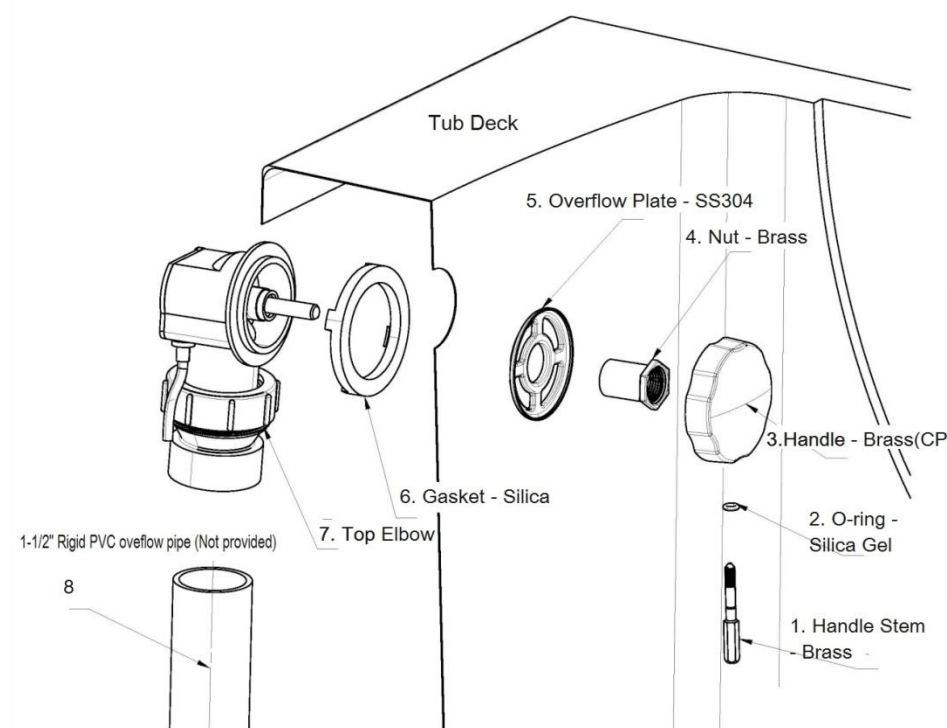


Silicone Sealant & Gun



Tape Measure

Overflow Installation



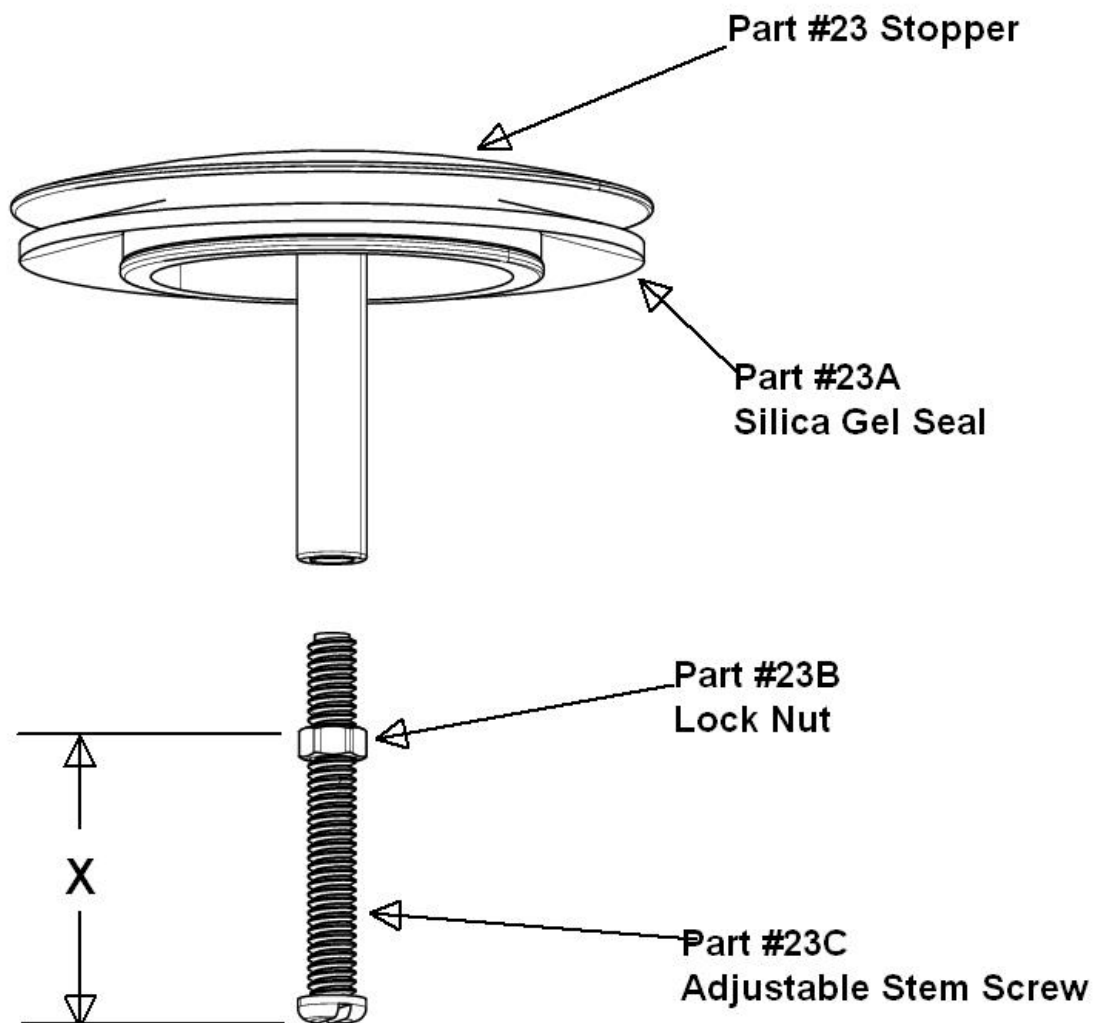
Overflow Installation

PC #	PART NAME
8	1-1/2" Rigid PVC overflow pipe(Not provided)
7	Top Elbow
6	Gasket - Silica Gel
5	Overflow Plate - SS304
4	Nut - Brass
3	Handle - Brass(CP)
2	O-ring - Silica Gel
1	Handle Stem - Brass

1. Apply Part #6 Gasket onto Part #7 Top Elbow flat
2. Push Part #7 to the overflow hole on the Tub
3. Place Part #5 Overflow Plate from inside the Tub to the Part #7
4. Apply Part #4 Nut to screw it into Part #7 using crescent wrench
5. Apply Part #3 Handle onto the stick out from Part #7
6. Apply Part #1 Handle Stem with Part #2 O-ring through the side hole on Part #3 to lock Part #3 onto Part #7 by using crescent wrench

Note: Be Sure Not Over-tighten the Part #4 Nut!!

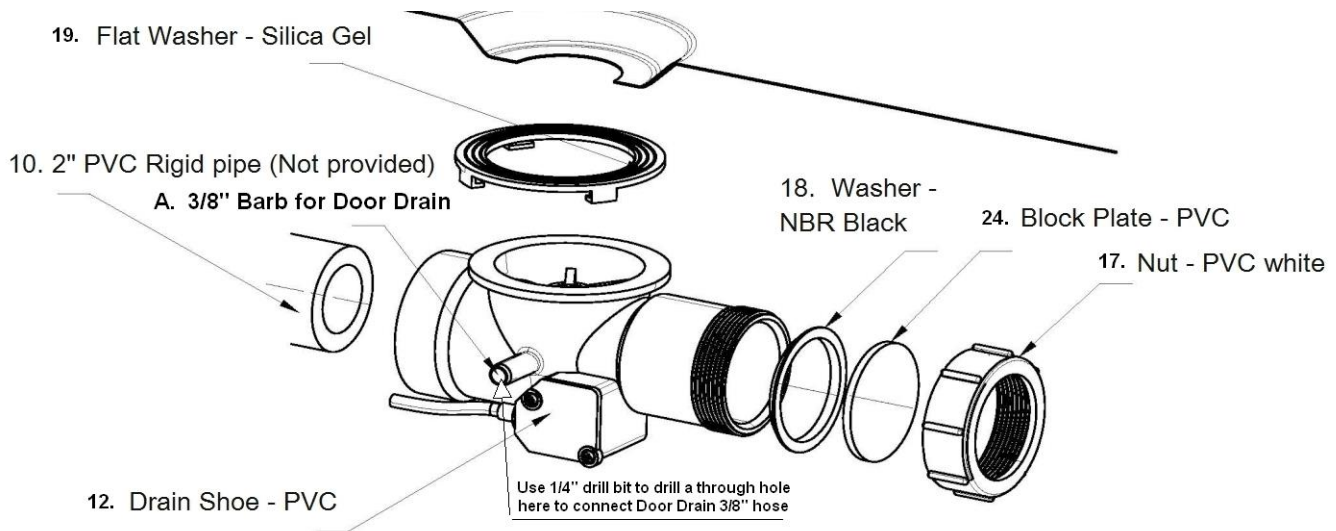
Stopper details and adjustment



Adjusting the volume of X by screw Part #23C into Part #23
Make sure the X is long enough when the Stopper applied
onto the Drain Strainer the bottom of the Part #23C is touching
the raiser stem inside the Drain Shoe.
And the Part #23A is just sit on the Drain Strainer and seal
Than lock the Part #23C to #23 by tighten the lock nut Part #23B

Drain Shoe barb for Door drain Connection

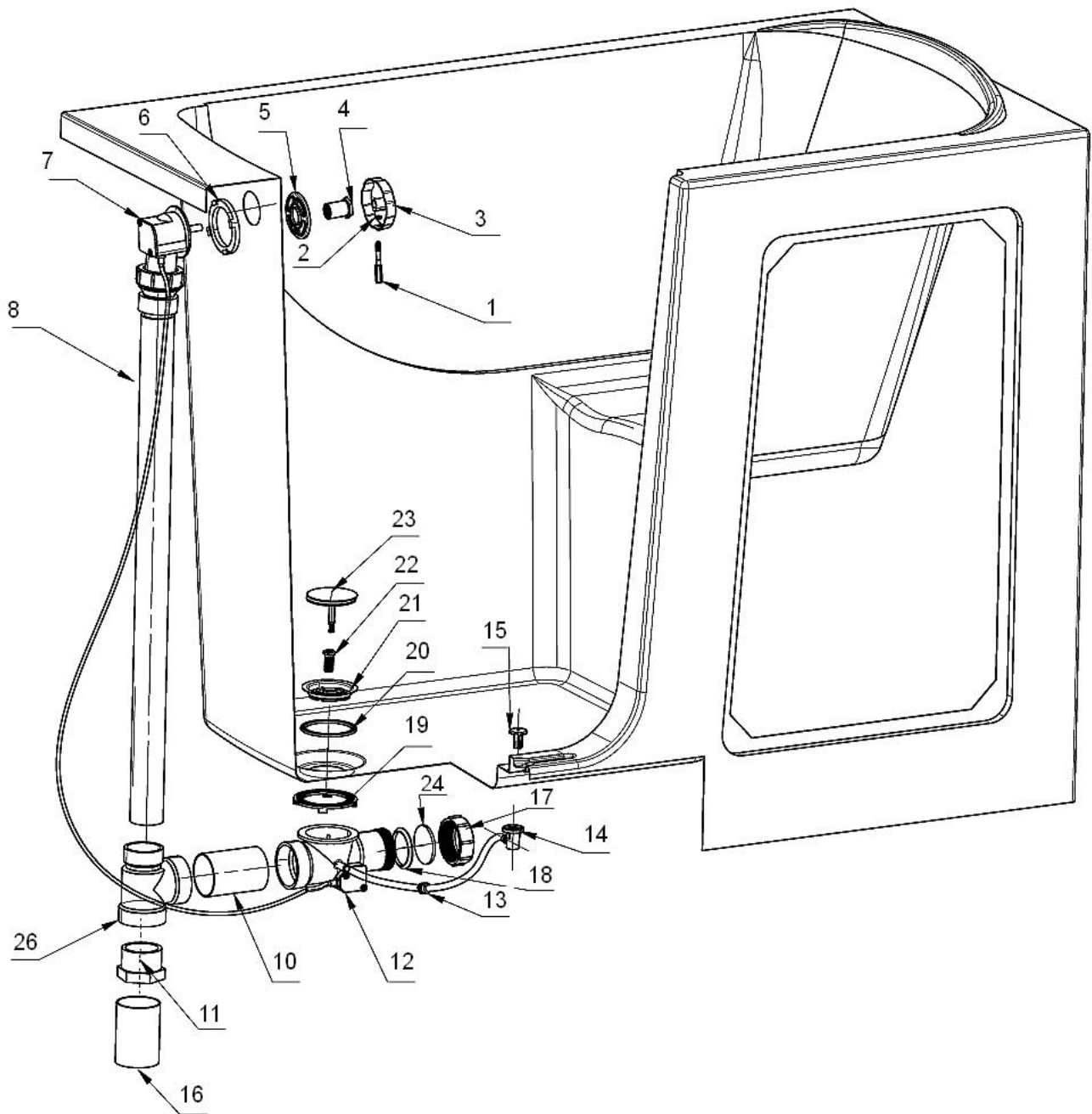
And lock & seal the 1-1/2" End



1. Before installing the drain shoe, make sure to use 1/4" drill bit and drill through hole at the barb on the drain shoe
2. There are two barbs on the drain shoe, choose the one that will be facing the door side after the drain shoe is installed. Drill the through hole to this barb only.
3. Connect the 3/8" PVC hose from the Door Drain onto this drilled-through hole barb with PVC Cement
4. To lock & seal the 1 1/2" end of the drain shoe: place Part #18 against the 1 1/2" end of the drain shoe, then place Part #24 Block Plate and Part #17 Nut to the 1 1/2" end of the drain shoe
5. Turn part #17 Nut clockwise to screw it onto the drain shoe, tighten it to seal the 1 1/2" end of the drain shoe

Installation-Standard Plumbing to a 1 ½" P-Trap

Note: Dry fit all plumbing elements including PVC pipe and nipples before you apply PVC cement to assemble the PVC pipe.



1. Refer to above installation drawing
2. Refer to page #6 to block and seal the 1 ½" end of the drain shoe
3. Apply silicone sealant to both side of flat part of Part #19 Flat Gasket
4. Snip Part #19 Flat Gasket onto Part #12 Drain Shoe
5. Hold the Part #12 Drain Shoe against the bottom of the Tub aligned to the drain hole pre-cut

on the Tub

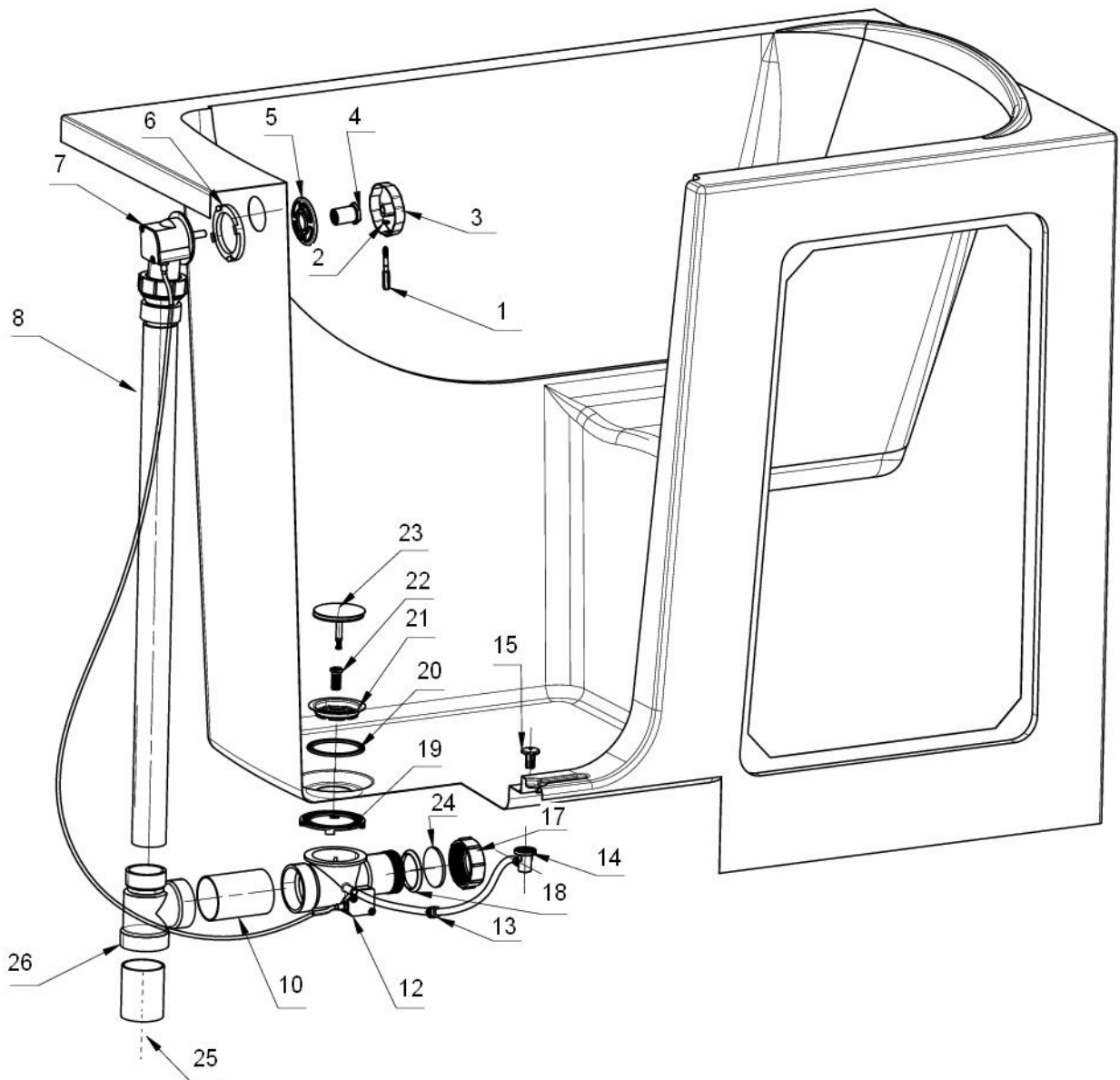
6. Make sure the open 2" side of the Part #12 Drain Shoe is facing the overflow side
7. Apply silicone sealant on both flat sides of Part #20 Flat Gasket
8. Place Part #20 Flat Gasket on the inside bottom of the Tub aligned the pre-cut hole on the bottom of the Tub
9. Place Part #21 Strainer on top of the Part #20
10. Install Part #22 Hollow Screw from top to screw it onto Part #12 Drain Shoe
11. Use crescent wrench to tighten Part #22 Hollow Screw to Part #12 Drain Shoe

Note: Be Sure Not Over-tighten the Part #22 Hollow Screw!!

12. Using PVC cement to connect Part #8 1 ½" PVC pipe(not included in the drain kit) to Part #7 Top Elbow
13. Prepare Part #10 2" PVC Nipple
14. Using PVC cement to connect Part #10 to Part #26 PVC Tee
15. Using PVC cement to connect Part #8 to Part #26 PVC Tee at 1 ½" end
16. Using PVC cement to connect Part #11 PVC 2" to 1 ½" Reducer to Part #26 PVC Tee at 2" end
17. Using PVC cement, connect Part #16 1 ½" PVC pipe (not included in the drain kit) to Part #11 Reducer
18. Part #16 than connect to the 1 ½" P-Trap

Installation-Standard Plumbing to a 2" P-Trap

Note: Dry fit all plumbing elements including PVC pipe and nipples before apply PVC cement to assemble the PVC pipe.

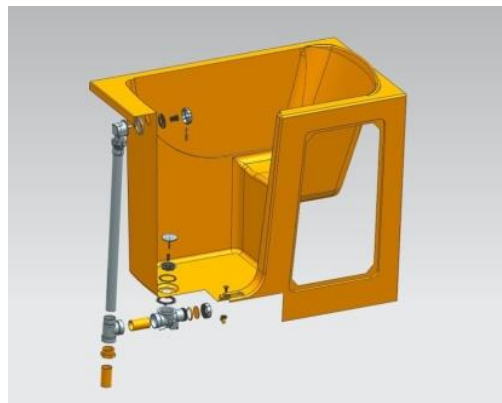
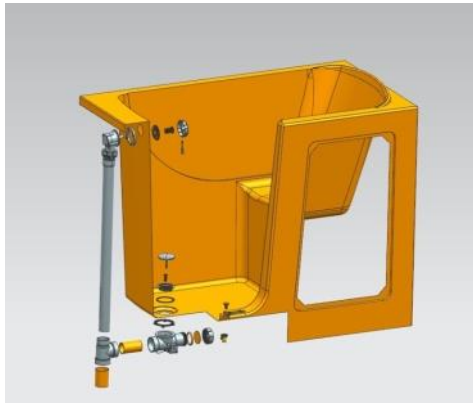


1. Refer to above installation drawing
2. Refer to page #6 to block and seal the 1 1/2" end of the drain shoe
3. Apply silicone sealant to both side of flat part of Part #19 Flat Gasket
4. Snip Part #19 Flat Gasket onto Part #12 Drain Shoe
5. Hold the Part #12 Drain Shoe against the bottom of the Tub aligned to the drain hole pre-cut on the Tub
6. Make sure the open 2" side of the Part #12 Drain Shoe is facing the overflow side

7. Apply silicone sealant on both flat sides of Part #20 Flat Gasket
8. Place Part #20 Flat Gasket on the inside bottom of the Tub aligned the pre-cut hole on the bottom of the Tub
9. Place Part #21 Strainer on top of the Part #20
10. Install Part #22 Hollow Screw from top to screw it onto Part #12 Drain Shoe
11. Use crescent wrench to tighten Part #22 Hollow Screw to Part #12 Drain Shoe

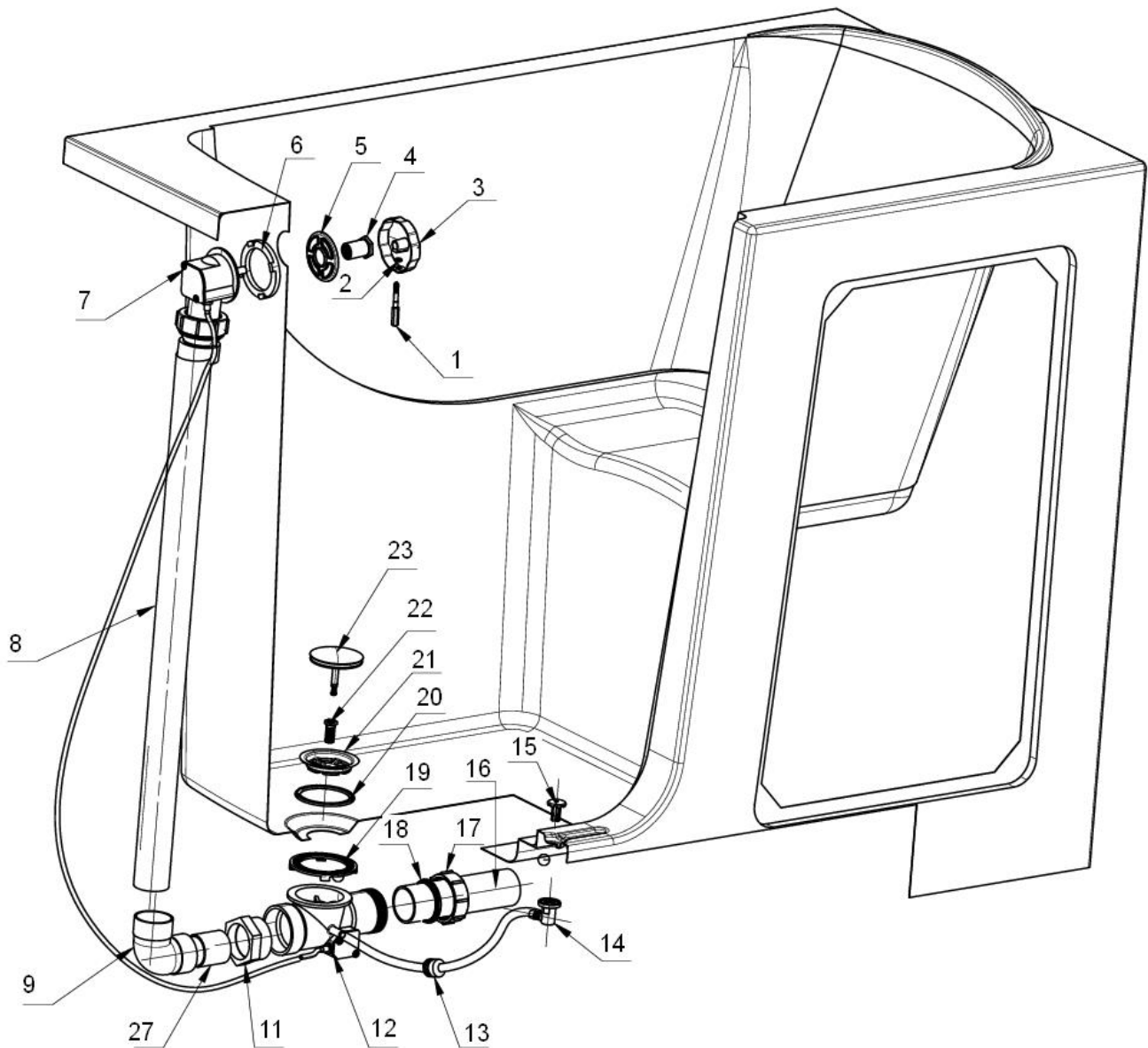
Note: Be Sure Not Over-tighten the Part #22 Hollow Screw!!

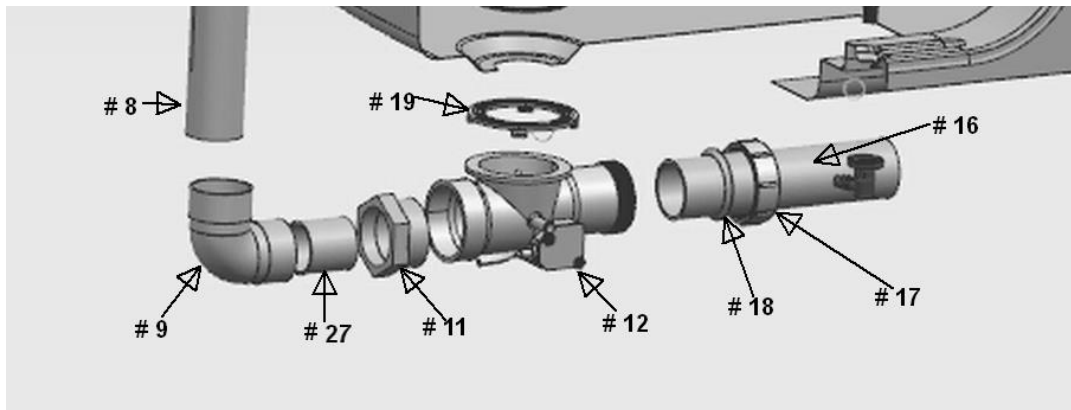
12. Using PVC cement, connect Part #8 1 ½" PVC pipe(not included in the drain kit) to Part #7 Top Elbow
13. Prepare Part #10 2" PVC Nipple (not included in Drain Kit)
14. Using PVC cement, connect Part #10 to Part #26 PVC Tee
15. Using PVC cement, connect Part #8 to Part #26 PVC Tee at 1 ½" end
16. Using PVC cement, connect Part #25 2" PVC pipe (not included in the Drain Kit) to Part #26 PVC Tee at 2" end
17. Part #25 than connect to the 2" P-Trap



Installation-Reverse Plumbing to a 1 ½" P-Trap

Note: Dry fit all plumbing elements including PVC pipe and nipples before apply PVC cement to assemble the PVC pipe.





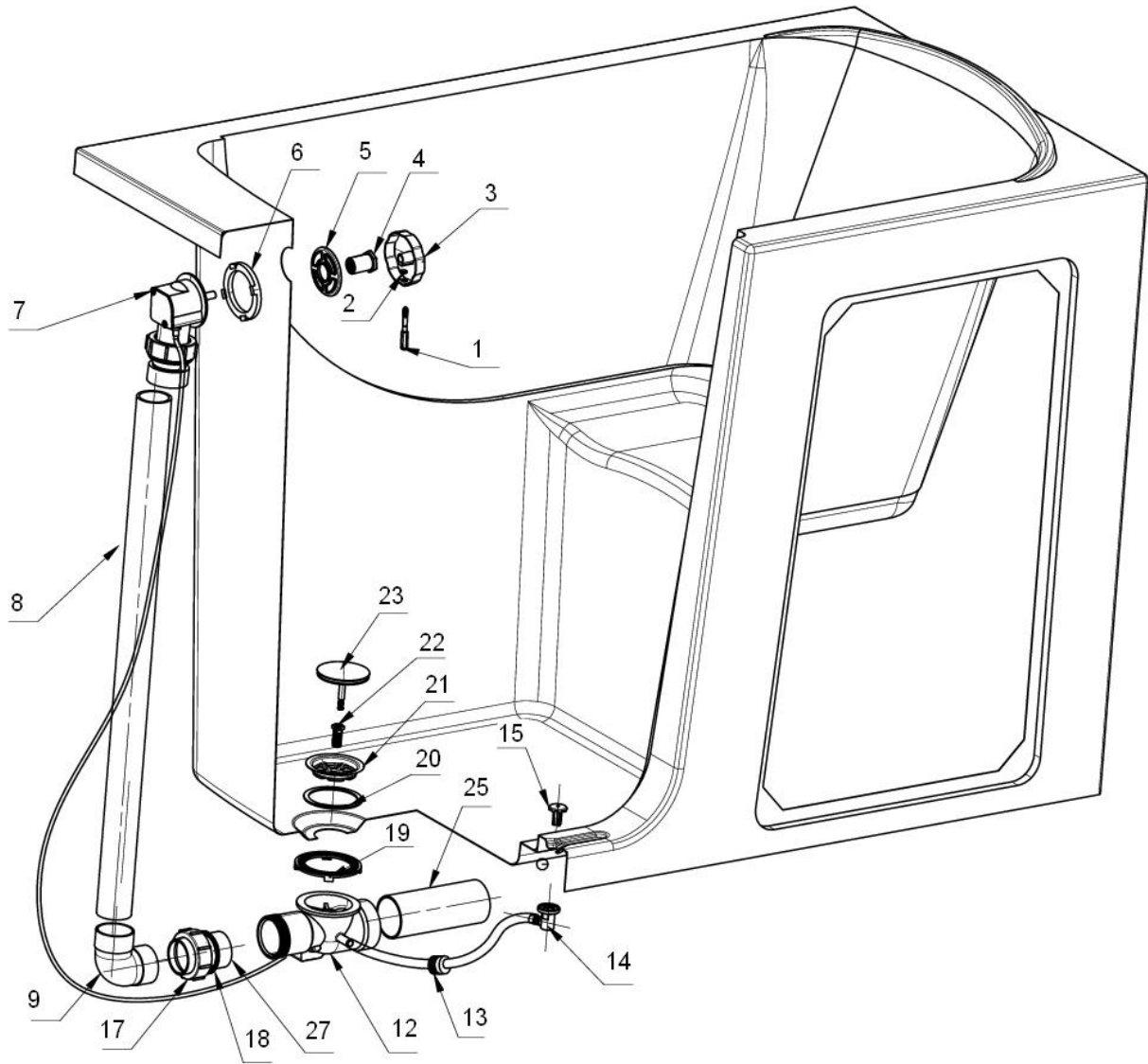
1. Refer to above installation drawing
2. Apply silicone sealant to both side of flat part of Part #19 Flat Gasket
3. Snip Part #19 Flat Gasket onto Part #12 Drain Shoe
4. Hold the Part #12 Drain Shoe against the bottom of the Tub aligned to the drain hole pre-cut on the bottom of the Tub
5. Make sure the open 2" side of the Part #12 Drain Shoe is facing the overflow side
6. Apply silicone sealant on both flat sides of Part #20 Flat Gasket
7. Place Part #20 Flat Gasket on the top of the bottom of the Tub aligned the pre-cut hole on the bottom of the Tub
8. Place Part #21 Strainer on top of the Part #20
9. Install Part #22 Hollow Screw from top to screw it onto Part #12 Drain Shoe
10. Use crescent wrench to tighten Part #22 Hollow Screw to Part #12 Drain Shoe

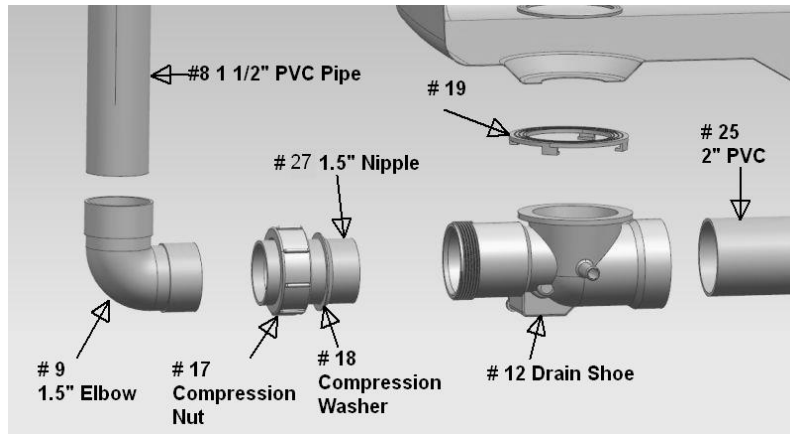
Note: Be Sure Not Over-tighten the Part #22 Hollow Screw!!

11. Using PVC cement, connect Part #8 1 1/2" PVC pipe(not included in the Drain Kit) to Part #9 1 1/2" PVC Elbow (not included in the Drain Kit)
12. Prepare Part #27 1 1/2" PVC Nipple (Not included in the Drain Kit)
13. Using PVC cement, connect Part #27 1 1/2" PVC Nipple to Part #9 PVC Elbow
14. Using PVC cement, connect Part #8 to Part #9 PVC 1 1/2" Elbow
15. Using PVC cement, connect Part #11 PVC 2" to 1 1/2" Reducer to Part #27 1 1/2" PVC Nipple
16. Using PVC cement, connect Part #11 PVC 2" to 1 1/2" PVC Reducer (not included in the drain kit) to Part #12 Drain Shoe at 2" open end
17. Refer to the above drawing, assemble Part #18 Compression Washer & Part #17 Compression Nut onto Part #16 1 1/2" PVC pipe(Not included in the Drain Kit)
18. Slide Part #16 into Part #12 Drain Shoe at 1 1/2" end all the way to the end
19. Turn part #17 Clockwise to screw it onto Part #12 Drain Shoe and compress Part #18 to seal
20. Part #16 other end will than connect to 1 1/2" P-Trap at reverse end

Installation-Reverse Plumbing to a 2" P-Trap

Note: Dry fit all plumbing elements including PVC pipe and nipples before apply PVC cement to assemble the PVC pipe.





1. Refer to above installation drawing
 2. Apply silicone sealant to both side of flat part of Part #19 Flat Gasket
 3. Apply Part #19 Flat Gasket onto Part #12 Drain Shoe
 4. Hold the Part #12 Drain Shoe against the bottom of the Tub aligned to the drain hole pre-cut on the bottom of the Tub
 5. Make sure the open 2" side of the Part #12 Drain Shoe is facing the Tub seat side
 6. Apply silicone sealant on both flat sides of Part #20 Flat Gasket
 7. Place Part #20 Flat Gasket on the top of the bottom of the Tub aligned the pre-cut hole on the bottom of the Tub
 8. Place Part #21 Strainer on top of the Part #20
 9. Install Part #22 Hollow Screw from top to screw it onto Part #12 Drain Shoe
 10. Use crescent wrench to tighten Part #22 Hollow Screw to Part #12 Drain Shoe
- Note: Be Sure Not Over-tighten the Part #22 Hollow Screw!!
11. Using PVC cement, connect Part #8 1 1/2" PVC pipe(not included in the Drain Kit) to Part #7 Top Elbow
 12. Prepare Part #27 1 1/2" PVC Nipple (Not included in the Drain Kit)
 13. Using PVC cement, connect Part #27 1 1/2" PVC Nipple to Part #9 PVC Elbow
 14. Using PVC cement, connect Part #8 to Part #9 PVC 1 1/2" Elbow
 15. Refer to the above drawing, assemble Part #18 Compression Washer & Part #17 Compression Nut onto Part #27 1 1/2" PVC Nipple(Not included in the Drain Kit)
 16. Slide Part #27 into Part #12 Drain Shoe at 1 1/2" end all the way to the end
 17. Turn part #17 Clockwise to screw it onto Part #12 Drain Shoe and compress Part #18 to seal
 18. Using PVC cement, connect Part #25 2" PVC pipe(not included in Drain Kit) to Part #12 Drain Shoe at the 2" open end, other end of Part #25 will than connect to 2" P-Trap at reverse end

