



INSTRUCTIONS

SAFETY WARNING:

Remove all plastic fasteners and tags. These are part of the packaging and should be discarded.

SAVE THESE INSTRUCTIONS –

This manual contains important safety and operating instructions.

WARNING

ELECTRIC PRODUCT. Keep away from children. As with all electrical products, precautions should be observed during handling and use to reduce the risk of electric shock. If the supply cord is damaged, it must be replaced by the manufacturer, its service agent or similarly qualified persons in order to avoid a hazard.

WARNING

Strobe lights have been known to trigger seizures in people with photosensitive epilepsy.

WARNING

The light is very bright. Do not shine directly into eyes.

IMPORTANT SAFETY INSTRUCTIONS

READ ALL INSTRUCTIONS BEFORE USING(THIS FURNISHING)

WARNING: TO REDUCE THE RISK OF BURNS, FIRE, ELECTRIC SHOCK OR INJURY TO PERSONS:

READ AND FOLLOW ALL SAFETY INSTRUCTIONS.

1. Do not secure the wiring of the product with staples or nails, or place on sharp hooks or nails.
2. Do not let lamps rest on the supply cord or on any wire.
3. Do not close doors or windows on the product or extension cords as this may damage the wire insulation.
4. Do not cover the product with cloth, paper or any material not part of the product when in use.
5. Dry location use only. Indoor use only.
6. This seasonal use product is not intended for permanent installation or use.
7. Do not mount or place near gas or electric heaters, fireplace, candles or other similar sources of heat.
8. Unplug the product when leaving the house, when retiring for the night, or if left unattended.
9. This is an electric product-not a toy! To avoid risk of fire, burns, personal injury and electric shock it should not be played with or placed where small children can reach it.
10. Do not use this product for other than its intended use.
11. Read and follow all instructions that are on the product or provided with the product.

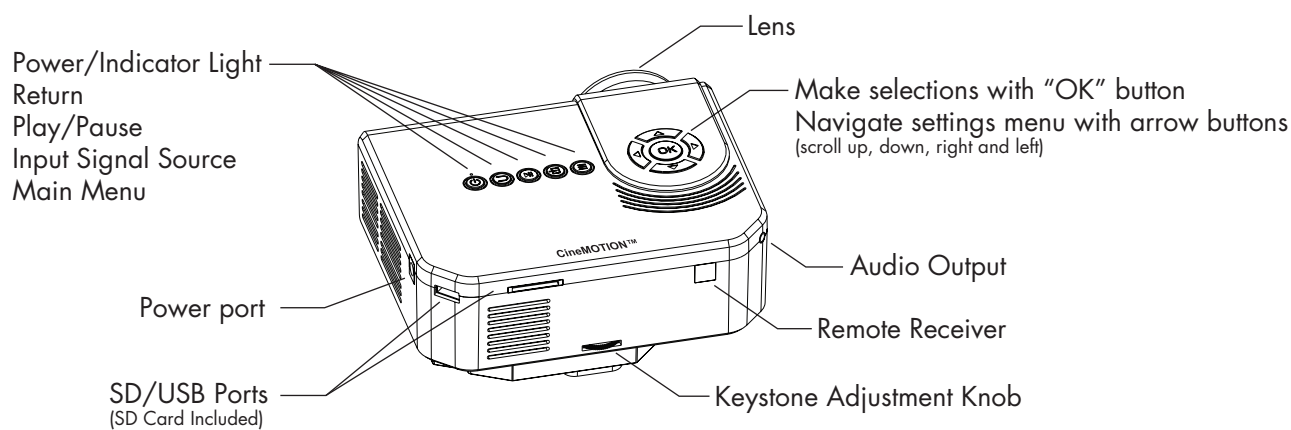
WARNING: To reduce the risk of fire and electric shock:

1. For indoor use only.
2. Do not install on trees having needles, leaves or branch coverings of metal or materials which look like metal.
3. Do not mount or support wires in a manner that can cut or damage wire insulation.

CONTENTS

Projector (with lense cap)	1 pc
Remote	1 pc
Adapter (input: 100-240V-50/60Hz 1.5A output: 12V-3000mA)	1 pc
Tripod	1 pc
Fabric screen	1 pc
SD card	1 pc
Battery	1 pc
Double-sided tape	8 pcs

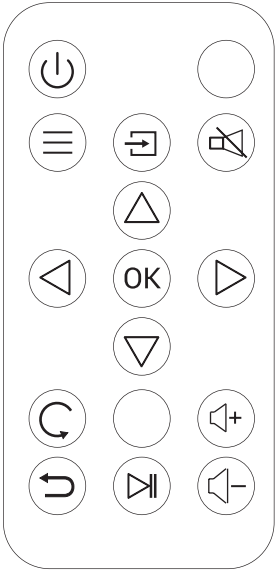
KEYPAD LEGEND



Use OK and DIRECTIONAL ARROWS to select and scroll through setting options.

REMOTE INSTRUCTIONS:

- Power
- Main Menu
- Input
- Mute
- Navigation/Selection
- Rotate Screen Orientation
- Volume Up
- Volume Down
- Return
- Play/Pause



Use OK and DIRECTIONAL ARROWS to select and scroll through setting options.

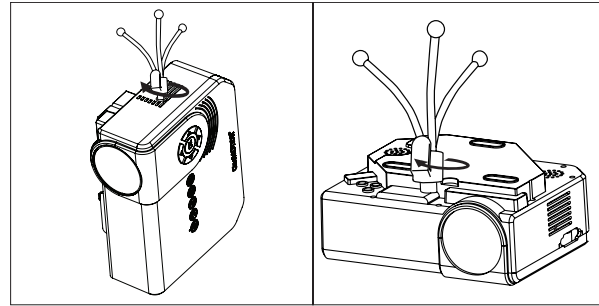
NOTES:

1. Point remote from behind the projector.
2. When using the remote to turn ON your set, there may be up to a 2 seconds delay before the light pattern starts working.
3. The effective operating distance of the remote is 11' (3.3m).
4. If for any reason the signal from the remote (transmitter) to the control box (receiver) hangs up, please turn off and then restart the power to the set.

ASSEMBLY INSTRUCTIONS

1. Gently remove contents from packaging and lay out in a clear area.

2. Screw the indoor tripod into the body of the projector, by clockwise to lock. (See illustration 1 for horizontal or vertical projection.)



Vertical

Horizontal

illustration 1

3. Plug adapter into standard wall outlet. (See illustration 2)

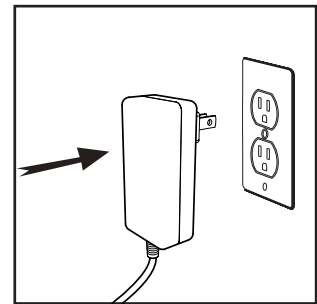


illustration 2

4. Insert the included SD card into the SD card slot. Or, for use with a personal USB, insert the USB.

5. Power on the projector by pressing the power button on the projector. the light will change from red (off) to blue. (See illustration 3)

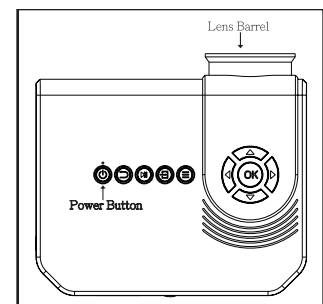


illustration 3

6. Adjust the focus of the projection by rotating the lens barrel. (See illustration 3)

7. Turn the keystone knob on back of the projector to achieve uniform projection. (See illustration 4)

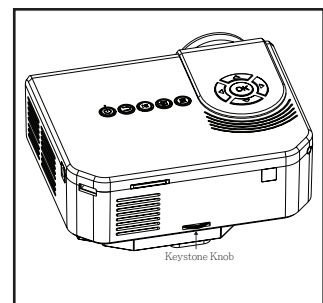


illustration 4

8. Hang the fabric screen on the window or the wall (See illustration 5), or use double-sided tape on a smooth and clean surface.

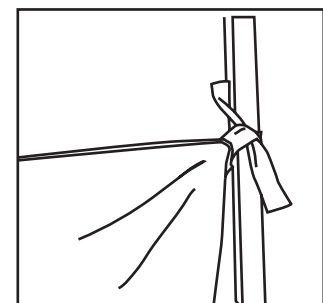
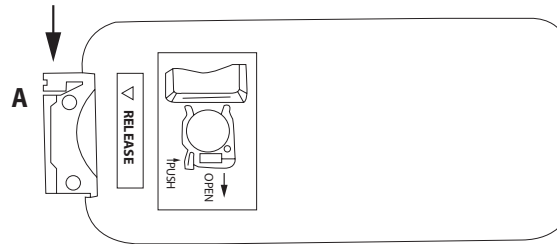


illustration 5

9. To turn off the projector, press the power button on the projector or remote.

BATTERY CAUTION:

- Keep this product's battery out of the reach of small children or pets. If ingested, contact a physician immediately.
- Always purchase the correct size and grade of battery most suitable for the intended use.
- Replace all battery of a set at the same time.
- Clean the battery contacts and also those of the device prior to battery installation.
- Remove battery from equipment which is not to be used for an extended period of time.
- Remove used battery promptly.
- When the remote control begins to lose its sensitivity, check the batteries and replace if necessary.
- Push "A" to open the battery compartment and replace battery.
Ensure the battery is installed correctly with regard to polarity (+ and -).



BATTERY USAGE:

Required CR2025 battery (included).

1. Keep these instructions for future reference because they contain important information. 2. May explode or leak and cause burn injury if recharged, disposed of in fire, mixed with a different battery type, inserted backwards or disassembled. 3. Products that contain batteries should not be disposed of in fire. The batteries inside may explode or leak. 4. Do not mix alkaline, standard (carbon-zinc) or rechargeable (nickel-cadmium) batteries. 5. Do not mix old and new batteries. Replace all batteries of a set at the same time. 6. Use only batteries of the same or equivalent type as recommended by the manufacturer. 7. Be sure to insert batteries with correct polarities and always follow manufacturers' instructions. 8. Remove exhausted batteries from product promptly. 9. Do not short-circuit supply terminals. 10. Remove batteries before storage or extended periods of non-usage. 11. Clean the contacts on the batteries and the device prior to battery installation. Non-rechargeable batteries are not to be recharged. Rechargeable batteries are not recommended for use in this product. If rechargeable batteries are being used, however, please follow these guidelines. (1). Rechargeable batteries should be removed from the product before being charged. (2). Rechargeable batteries should only be charged under adult supervision.

WARNING:

Changes or modifications to this unit not expressly approved by the party responsible for compliance could void the user's authority to operate the equipment.

WARNING

This equipment has been tested and found to comply with the limits for a Class B digital device, pursuant to part 15 of FCC Rules. These limits are designed to provide reasonable protection against harmful interference in a residential installation. This equipment generates, uses, and can radiate radio frequency energy and, if not installed and used in accordance with the instructions, may cause harmful interference to radio communications. However, there is no guarantee that interference will not occur in a particular installation. If this equipment does cause harmful interference to radio or television reception, which can be determined by turning the equipment off and on, the user is encouraged to try to correct the interference by one or more of the following measures:

- Reorient or relocate the receiving antenna.
- Increase the separation between the equipment and receiver.
- Connect the equipment into an outlet on a circuit different from that to which the receiver is connected.
- Consult the dealer or an experienced radio/TV technician for help.

This device complies with Part 15 of FCC Rules. Operation is subject to the following two conditions: (1) This device may not cause harmful interference, and (2) This device must accept any interference received, including interference that may cause undesired operation.

THESE INSTRUCTIONS ARE FOR ITEM

223261



Visit WWW.GEMMY.COM for more information.

©2019 GEMMY INDUSTRIES CORP.
117 WRANGLER DRIVE, SUITE 100
COPPELL, TX 75019 U.S.A.
1 (800) 274-6717
MADE IN CHINA
PRINTED IN CHINA