

allen + roth.

ALLEN + ROTH and logo design are trademarks or registered trademarks of LF, LLC. All rights reserved.

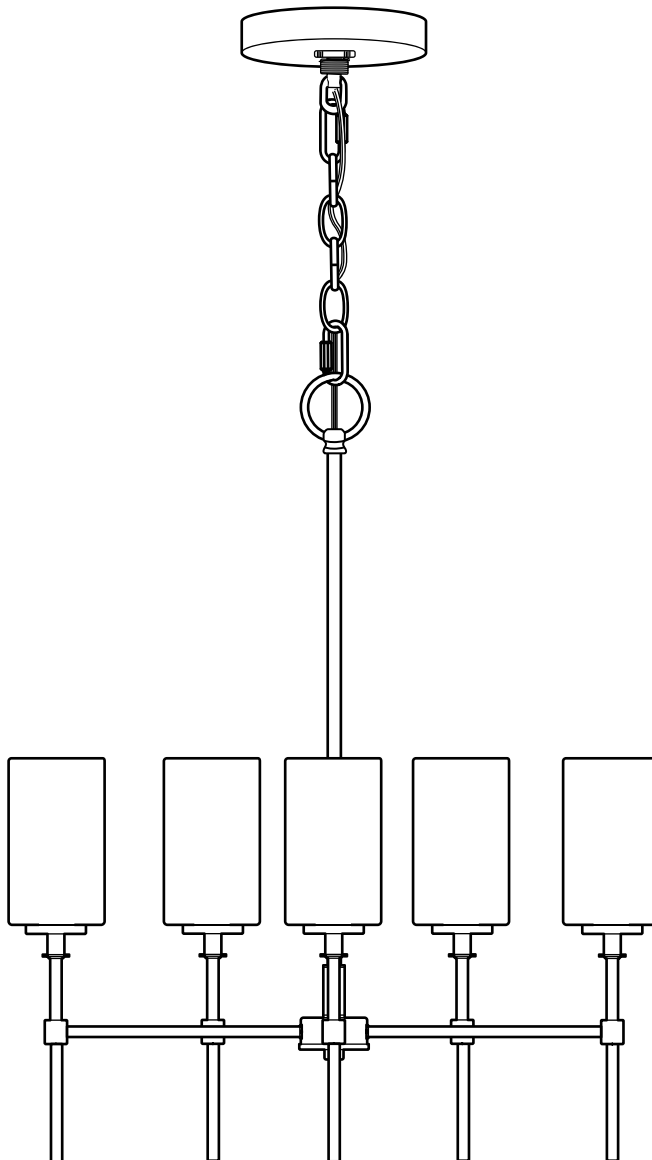
ITEM #6021338

MODEL #CH30-5SB

5-LIGHT CHANDELIER

Español p. 12

ATTACH YOUR RECEIPT HERE



Purchase Date _____



APPROVED FOR USE
IN DAMP LOCATIONS



Thank you for purchasing this ALLEN + ROTH product.

Questions, problems, missing parts?

Before returning, contact us on:

866-439-9800, 8 a.m.-8 p.m., EST, Monday-Sunday or **ascs@lowes.com**.

TABLE OF CONTENTS

Package Contents 2

Hardware Contents 3

Safety Information 3

Preparation 4

Assembly Instructions 5

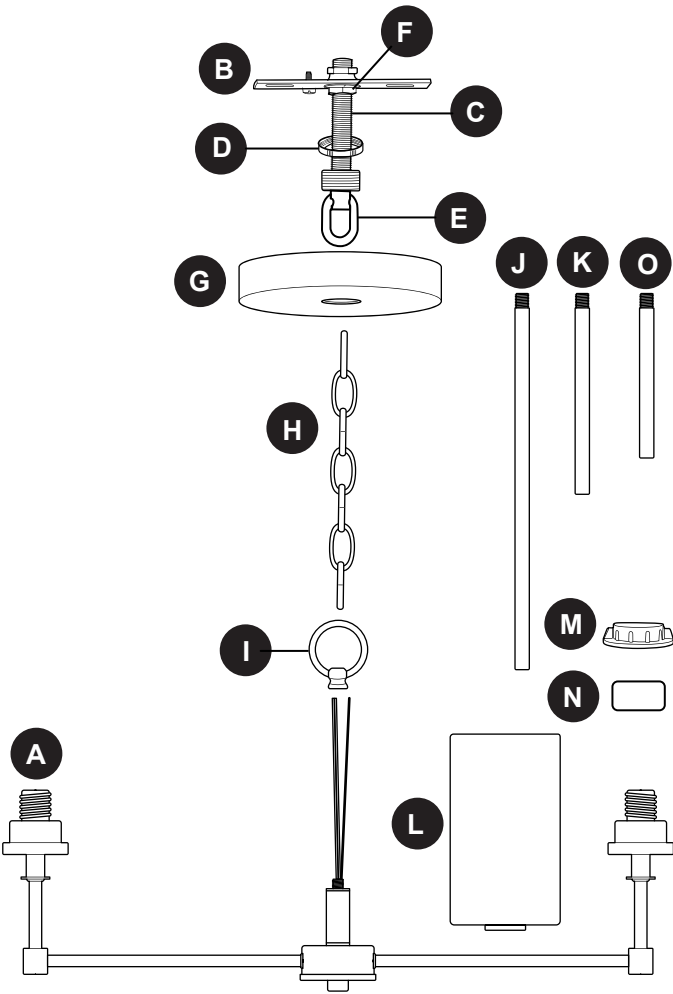
Care and Maintenance 11

Troubleshooting 11

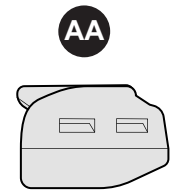
Warranty 11

PACKAGE CONTENTS

PART	DESCRIPTION	QUANTITY
A	Fixture	1
B	Mounting Strap	1
C	Threaded Rod (preassembled to mounting strap (B))	1
D	Threaded Ring (preassembled to screw collar loop (E))	1
E	Screw Collar Loop (preassembled to threaded rod (C))	1
F	Hex Nut (preassembled to threaded rod (C))	1
G	Canopy	1
H	Chain	1
I	Fixture Loop	1
J	12-inch Rod	4
K	6-inch Rod	1
L	Shade	5
M	Socket Ring (preassembled to fixture (A))	5
N	Socket Cover (preassembled to fixture (A))	5
O	4-inch Rod	5

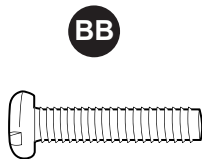


HARDWARE CONTENTS (shown actual size)



Lever Wire Connector

Qty. 3



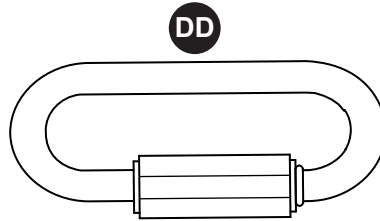
Machine Screw

Qty. 2



Socket Ring Tool

Qty. 1



Connecting Chain Link

Qty. 2



SAFETY INFORMATION

READ AND SAVE THESE INSTRUCTIONS.



DANGER

- For your protection and safety, carefully read and understand the information provided in this manual completely before attempting to assemble, install or operate this product. Failure to do so could lead to fire, electrical shock or other injuries that could be hazardous or even fatal.
- TURN OFF ELECTRICITY at main fuse box (or circuit breaker box) before beginning installation by removing the fuse (or switching the circuit breaker off).
- DO NOT connect this fixture to an electrical system that does not provide a means for equipment grounding. Never use a fixture in a two-wire system that is not grounded. Installing a fixture into an electrical system not having a proper grounding means could cause metal parts of the fixture to carry electrical currents if any of the fixture wires, wire connections or splices were to become broken, cut or loose during the mounting or normal operation of the fixture. Under this condition, anyone coming in contact with the fixture would be subject to electrical shock, which could cause serious injury or death.
- DO NOT connect the BARE or GREEN insulation fixture ground wire to the BLACK (HOT) current-carrying wire or the WHITE (NEUTRAL) house wire. Connection of the BARE or GREEN fixture ground wire to the BLACK or WHITE house wires may cause metal parts of the fixture to carry electrical currents. Under this condition, anyone coming in contact with the fixture will receive electrical shock, which could cause serious injury or death.
- DO NOT damage or cut the wire insulation (covering) during installation of fixture. DO NOT permit wires to contact any surface having a sharp edge. To do so may damage or cut the wire insulation, which could cause serious injury or death from electrical shock.



WARNING

- All electrical connections must be in agreement with local codes and ordinances, the National Electric Code (NEC) and ANSI/NFPA 70-1999. Contact your municipal building department to learn about your local codes, permits and/or inspections. Risk of fire - most dwellings built before 1985 have supply wire rated for 140 °F. Consult a qualified electrician before installation.
- To avoid personal injury, the use of gloves is necessary while handling fixture parts with sharp edges.

SAFETY INFORMATION

WARNING

- DO NOT suspend any fixture by the house wires. A fixture must always be mounted directly to an outlet box or to a mounting strap which is first attached to the outlet box. Wire connectors will not support the weight of a fixture. Suspending a fixture by the house wires and wire connectors will result in the fixture falling, with the possibility of personal injury and the danger of electrical shock or fire.
- To reduce the risk of fire, electrical shock or personal injury, lever wire connectors provided with this light fixture are designed to accept only one 12-gauge house wire and one lead wire from the light fixture. If your house wire is larger than 12-gauge or there is more than one house wire to connect to the corresponding fixture lead wires, consult an electrician for the proper size wire connectors to use.
- To reduce the risk of damage to the fixture, DO NOT use power tools to assemble any part of the fixture.

CAUTION

- If you are not sure the lighting system has a grounding means, DO NOT attempt to install this fixture. Contact a qualified, licensed electrician for information regarding the proper grounding methods as required by the local electrical code in your area.
- All fixtures must be mounted to an outlet box that is supported by the building structure.
- If a dimmer control switch is used with this fixture, obtain professional advice to determine the correct type to use as well as the electrical rating required.
- DO NOT use bulbs having a wattage greater than the maximum value stated on the fixture. The use of bulbs with higher wattage than specified will increase temperatures and risk of fire.

PREPARATION

Before beginning assembly of product, make sure all parts are present. Compare parts with package contents list and hardware contents list. If any part is missing or damaged, do not attempt to assemble the product.

Estimated Assembly Time: 30 minutes

Tools Required for Assembly (not included): Phillips Screwdriver, Pliers, Wire Cutters, Wire Strippers, Safety Glasses, Stepladder, Electrical Tape, Gloves

Helpful Tools (not included): A/C Tester Light, Do-It-Yourself Guide, Soft Cloth

ASSEMBLY INSTRUCTIONS

1. Turn off circuit breakers and wall switch to the fixture supply line leads.

⚠ DANGER: Failure to disconnect power supply prior to installation may result in serious injury or death.

2. Remove existing fixture and disconnect all electrical wiring.

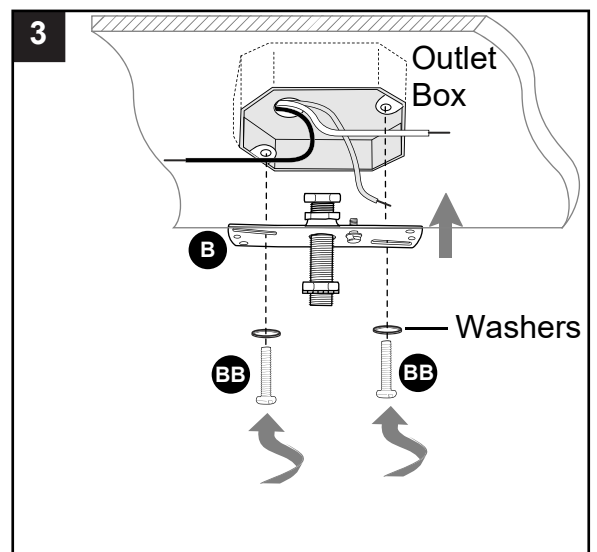
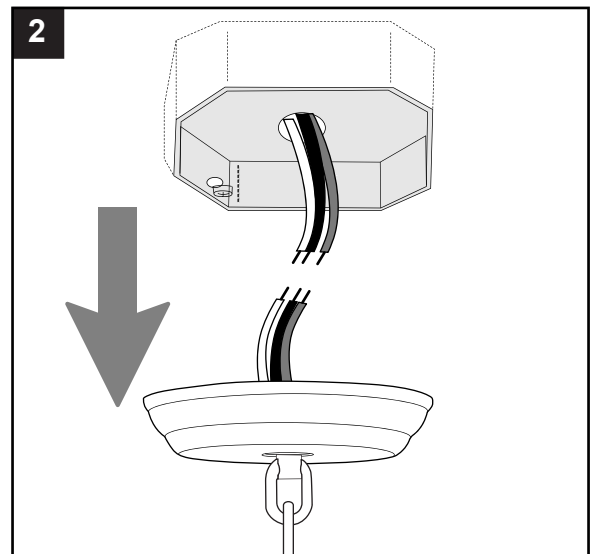
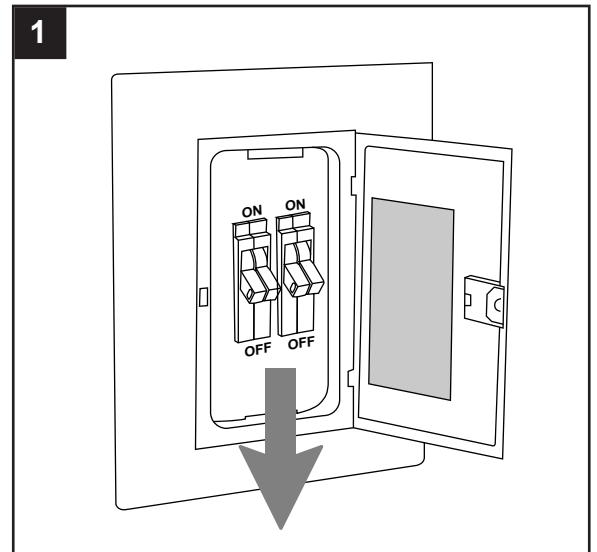
3. **⚠ CAUTION:** Make sure the outlet box can support 35 lbs. hanging weight. Use *metal* outlet box; plastic outlet boxes are not recommended.

Attach mounting strap (B) to outlet box (not included) using the existing washers and outlet box screws or the machine screws (BB). Tighten machine screws (BB) completely to secure mounting strap (B).

NOTE: If the outlet box screws required for your outlet box are of a different size than the machine screws (BB), consult with a licensed electrician before proceeding.

Hardware Used

BB Machine Screw  x 2



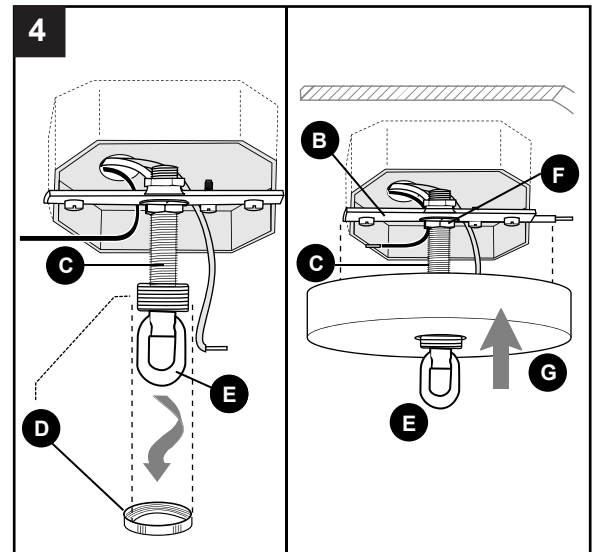
ASSEMBLY INSTRUCTIONS

4. Remove threaded ring (D) from screw collar loop (E) and save for later use.

Temporarily place canopy (G) over mounting strap (B) to determine amount of adjustment necessary for threaded rod (C).

NOTE: Canopy (G) should fit flush against ceiling when mounted. Once threaded rod (C) is adjusted, tighten hex nut (F) securely against mounting strap (B).

Set canopy (G) aside.

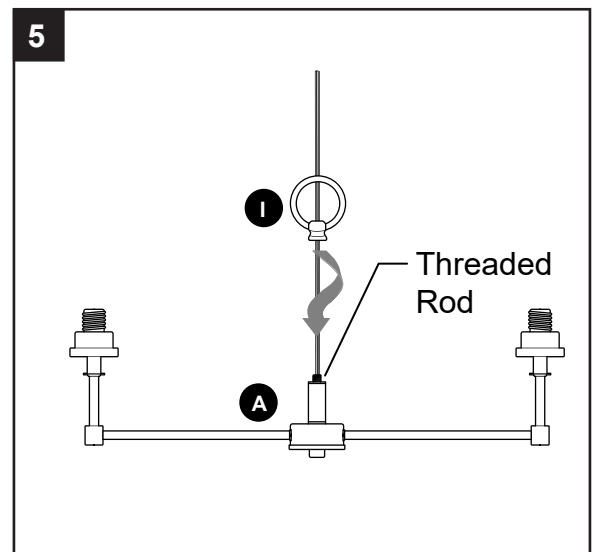


5. There are different ways to use the fixture (A) depending on the fixture parts (H/J/K) you decide to use:

Whatever fixture parts (H/J/K) you choose to use, the fixture loop (I) must be used to hang fixture (A).

NOTE: If you do not wish to use rods (J/K) please continue to step 7.

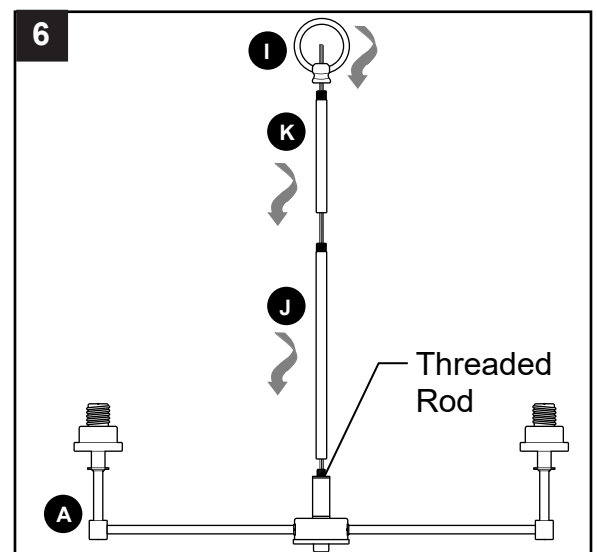
Thread wires from fixture (A) through fixture loop (I) and attach fixture loop to threaded rod on top of fixture (A).



6. Determine the length at which the fixture (A) will hang.

Thread wires from top of fixture (A) through the first of the rods (J/K). Slide the rod (J/K) down to the fixture (A) and screw onto threaded rod at top of fixture (A). Repeat with the desired number of rods (J/K).

After attaching the desired number of rods, attach the fixture loop (I) to the top of the uppermost rod (J/K).

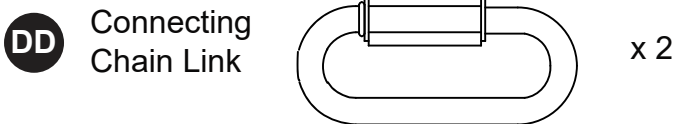


ASSEMBLY INSTRUCTIONS

- Locate connecting chain links (DD) in hardware pack and open both of them. If you wish to use the length of the chain, attach chain (H) to connecting chain link (DD) and close connecting chain link (DD). Attach the other connecting chain link (DD) to the other end of chain (H) and leave open.

Hook the other connecting chain link (DD) to the screw collar loop (E) at the bottom of threaded rod (C) on mounting strap (B)--leave this connecting chain link (DD) open for now.

Hardware Used



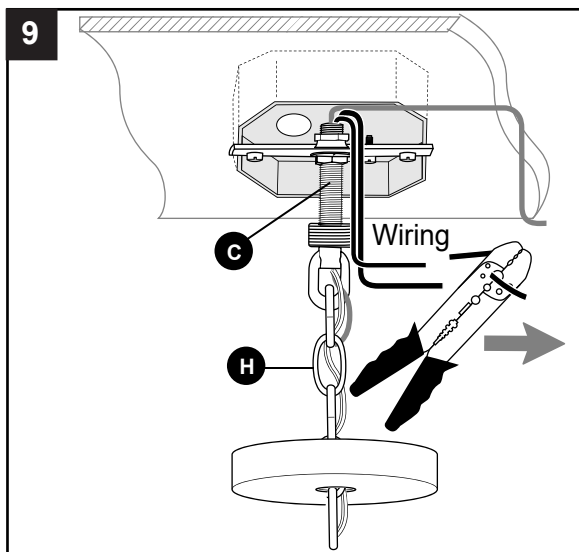
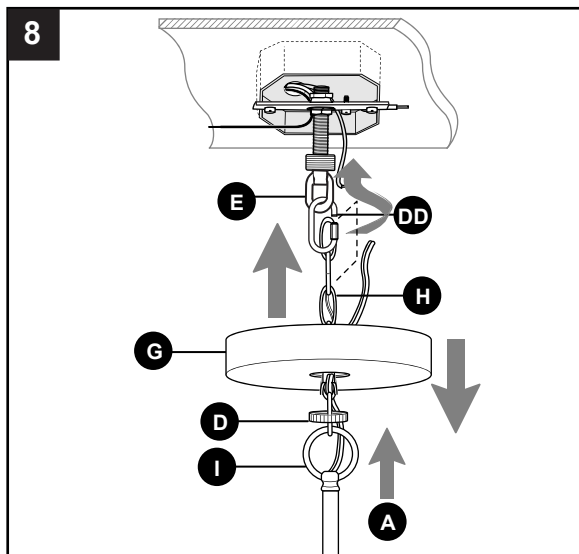
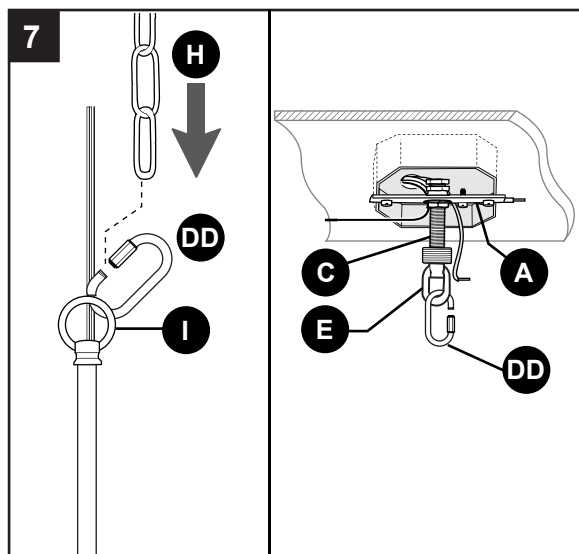
- Lift fixture (A) toward screw collar loop (E) and feed chain (H) and wiring through threaded ring (D) and then canopy (G).

Hang fixture loop (I) on open connecting chain link (DD). Close connecting chain link (CC).

Feed wiring from fixture (A) up through the fixture loop (I) and chain (H).

- Feed wiring up through hole at bottom of threaded rod (C). Gently push wiring until it comes through top of threaded rod (C). Pull all wiring until there is little to no extra slack left in the wires running through the chain (H).

Prepare wire by stripping 3/4 in. of insulation from wire ends using wire strippers (not included).



ASSEMBLY INSTRUCTIONS

10a. **IMPORTANT:** Each wire connection is made by firmly raising the levers on each lever wire connector (AA), as shown. Then, ONE wire is inserted into each opening.

⚠ WARNING: In order for wire connections to be secure, all levers on the lever wire connectors (AA) must be completely returned to their original position.

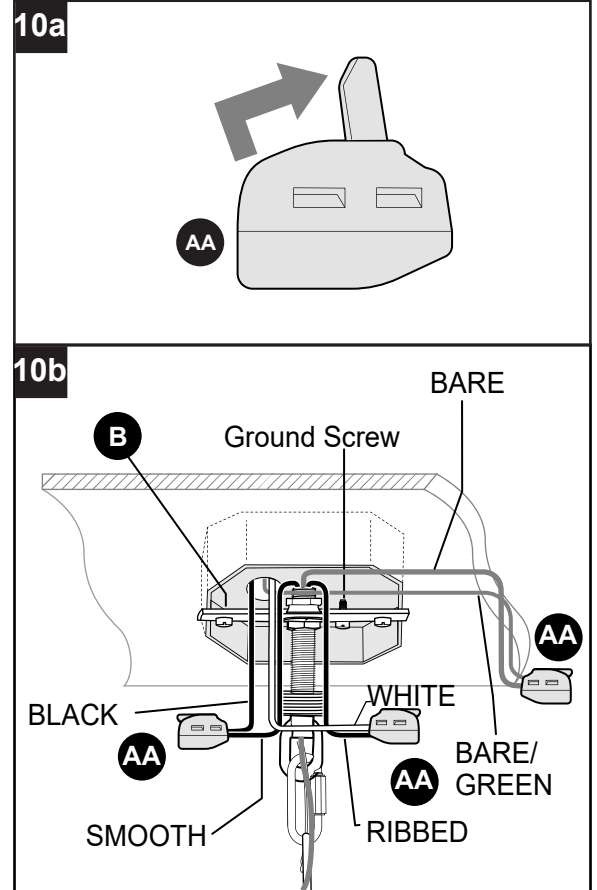
10b. **⚠ WARNING:** NEVER connect ground wire to WHITE or BLACK power supply wires.

Insert BARE/GREEN ground wire from outlet box and BARE ground wire from fixture (A) into openings in lever wire connector (AA). Insert RIBBED wire from fixture (A) and WHITE wire from outlet box into openings in lever wire connector (AA). Insert SMOOTH wire from fixture (A) and BLACK wire from outlet box into openings in lever wire connector (AA).

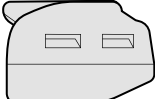
⚠ WARNING: GENTLY pull on wires in each lever wire connector (AA) to confirm the lock is engaged and that wires are secure. GENTLY pull on wires in each lever wire connector (AA) to confirm the lock is engaged and that wires are secure.

⚠ WARNING: To reduce the risk of fire, electrical shock or personal injury, lever wire connectors (AA) are designed to accept only one 12-gauge house wire and one lead wire from the light fixture. If your house wire is larger than 12-gauge or there is more than one house wire to connect to the corresponding fixture lead wires, consult an electrician for the proper size lever wire connectors to use.

NOTE: If outlet box does not have a BARE/GREEN wire, the BARE ground wire from fixture (A) should be attached to the GREEN SCREW (labeled GND) on mounting strap (B).



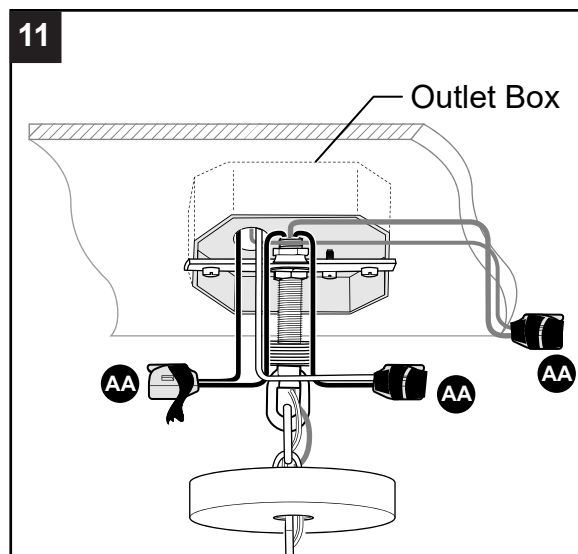
Hardware Used

AA Lever Wire Connector  x 3

ASSEMBLY INSTRUCTIONS

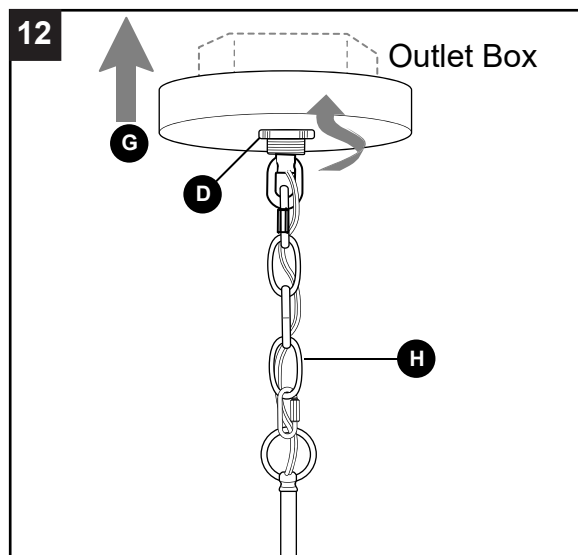
11. Wrap electrical tape (not included) around each individual lever wire connector (AA) down to the wire.

⚠ WARNING: Make sure no bare wire or wire strands are visible after making connections.

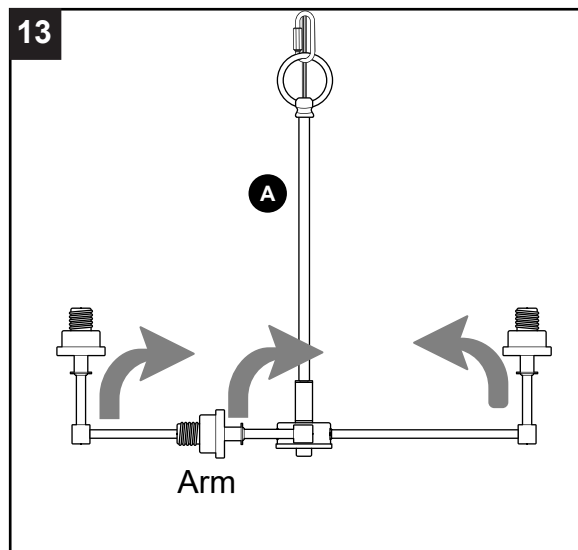


12. Carefully arrange excess wiring and lever wire connectors (AA) within outlet box.

Slide canopy (G) and threaded ring (D) up towards mounting strap (B). Secure canopy (G) to mounting strap (B) by tightening the threaded ring (D).



13. Gently but firmly hold fixture (A) and turn arms 90°.



ASSEMBLY INSTRUCTIONS

14. Remove socket ring (M) and socket cover (N) from socket on fixture (A).

Place shade (L) and socket cover (N) on socket. Use socket ring tool (CC) to secure shade (L) and socket cover (N) with socket ring (M).

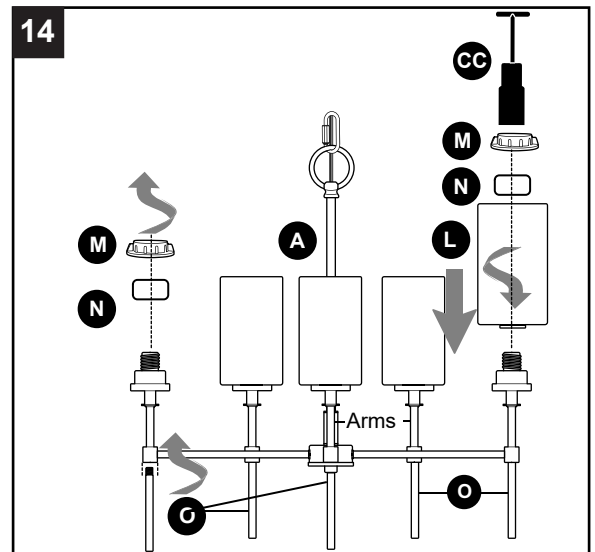
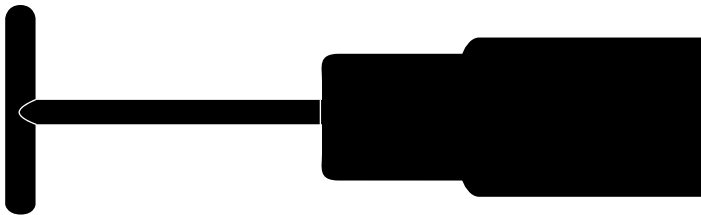
⚠ WARNING: Do not overtighten socket rings (M) as shades (L) may crack or break.

Repeat with remaining sockets.

Screw 4-inch rods (O) to bottom of arms on fixture (A).

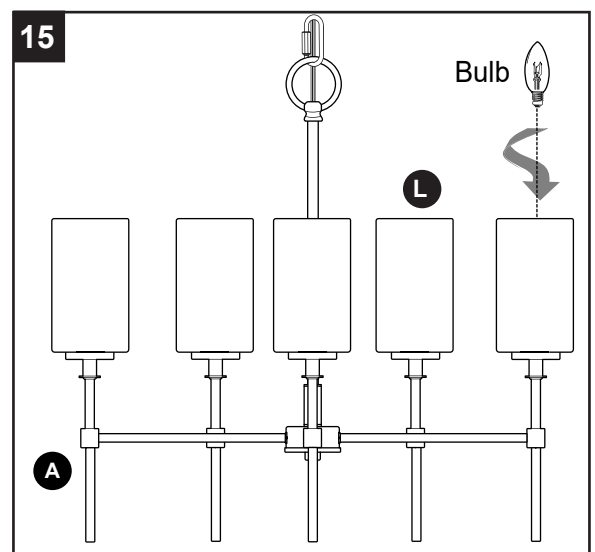
Hardware Used

CC Socket Ring Tool x 1



15. Install 5 candelabra-base incandescent bulbs (not included). Use 60-watt max. incandescent bulbs or CFL/LED equivalent.

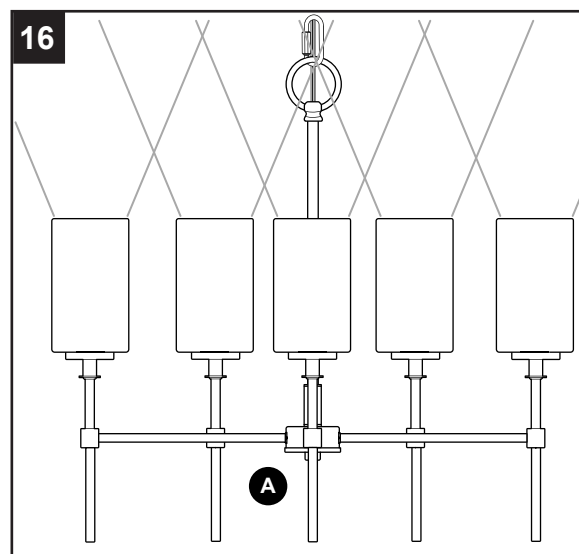
⚠ WARNING: When replacing bulb(s), allow bulb(s), fixture (A) and shade(s) (L) to cool down before touching.



ASSEMBLY INSTRUCTIONS

16. Restore power and test fixture (A).

If light does not function, please refer to TROUBLESHOOTING below.



CARE AND MAINTENANCE

- Shut off main power supply or unplug. Wipe with soft cloth or use window cleaner. Do not use an abrasive cleaner.

TROUBLESHOOTING

⚠ WARNING: Before beginning work, shut off the power supply to avoid electrical shock.

PROBLEM	POSSIBLE CAUSE	CORRECTIVE ACTION
Bulb(s) will not light.	1. Bulb(s) is/are burned out. 2. Power is OFF. 3. Faulty connection.	1. Replace light bulb(s). 2. Make sure power supply is ON. 3. Check wiring and all connections.
Fuse blows out or circuit breaker trips.	1. Crossed wires. 2. Power wire is grounding out.	1. Check wiring. 2. Check all connections.

WARRANTY

The distributor warrants all of its lighting fixtures against defects in materials and workmanship for one (1) year from the date of purchase. If within this period the product is found to be defective, take a copy of the bill of sale as a proof of purchase and the product in its original carton to the place of purchase. The distributor will, at its option, repair, replace or refund the purchase price to the consumer. All costs of installation and removal of the fixture is the responsibility of the consumer. This warranty does not cover fixtures becoming defective due to misuse, accidental damage or improper handling and/or installation and specifically excludes liability for direct, incidental or consequential damages, improper packaging of returned products and acts of God. As some states do not allow exclusions of limitations on an implied warranty, the above exclusion and limitation may not apply. This warranty gives you specific rights and you may also have other rights which may vary from state to state.