



Chalice

22-3/4" oval vessel bathroom sink

K-31701

Features

- Elongated oval basin
- With overflow
- No faucet holes; requires wall- or tall deck-mount faucet
- Color matches seamlessly with other KOHLER® products

Material

- Vitreous china

Installation

- Vessel



ADA

Codes/Standards

ASME A112.19.2/CSA B45.1

ADA

ICC/ANSI A117.1

IAPMO Certification

KOHLER® One-Year Limited Warranty

See website for detailed warranty information.

Available Colors/Finishes

Color tiles intended for reference only.

Color	Code	Description
-------	------	-------------



0

White

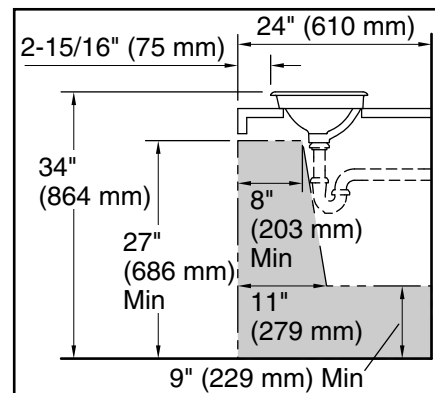
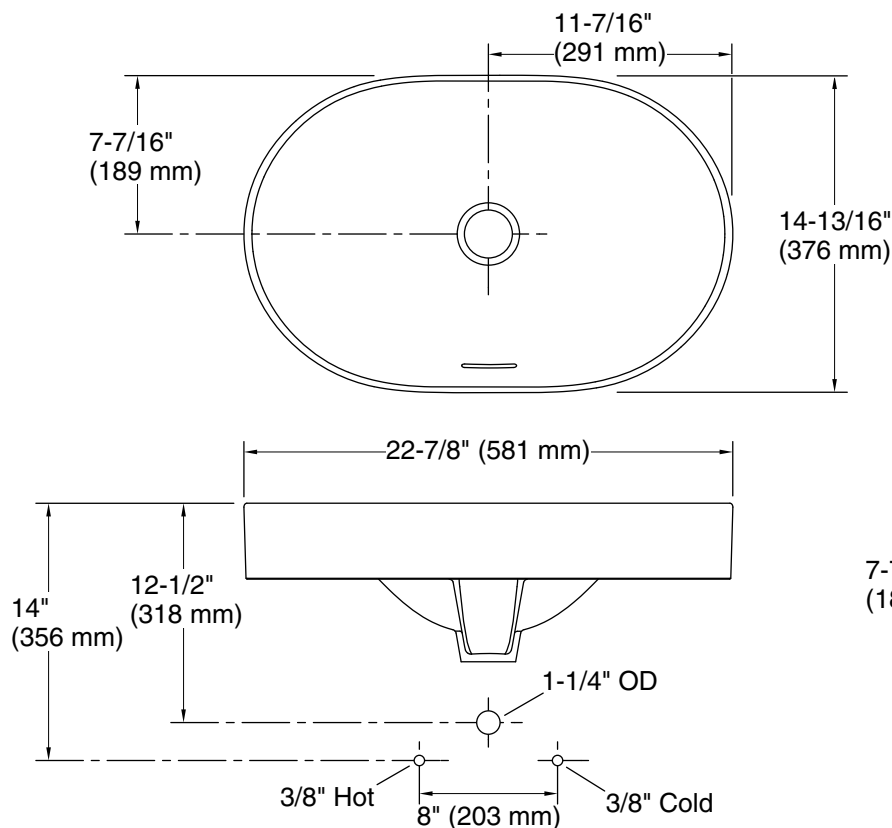
1-800-4KOHLER (1-800-456-4537)

Kohler Co. reserves the right to make revisions without notice to product specifications.

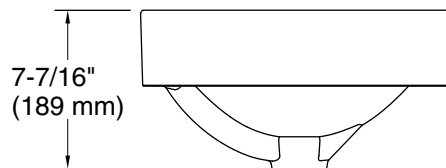
For the most current Specification Sheet, go to www.kohler.com USA or www.kohler.ca Canada

7-13-2024 20:19 - US

THE BOLD LOOK
OF **KOHLER®**



Recommended ADA Installation



Technical Information

All product dimensions are nominal.

Bowl area (Only): Length: 22-1/8" (562 mm)
Width: 14-5/16" (363 mm)
Bowl depth: 5-9/16" (142 mm)

With overflow: Yes

Drain hole: 1-3/4" (45 mm)

Template: Above-counter, 1507716-7, required,
not included

Notes

Install this product according to the installation instructions.

ADA compliant when installed to the specific requirements of these regulations.