

allen + roth.

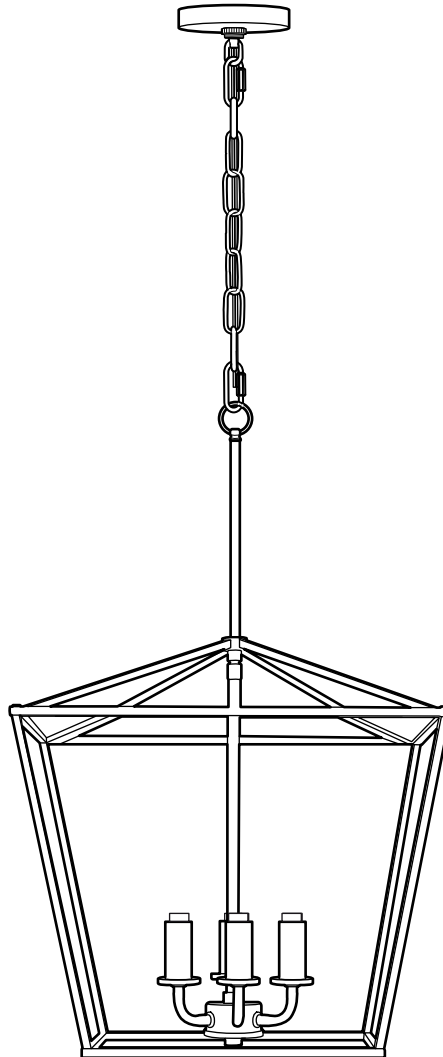
ALLEN + ROTH and logo design are trademarks or registered trademarks of LF, LLC. All rights reserved.

ITEM #6021348/6021354/6021358
MODEL #CH31-4MBK/CH31-4GD/CH31-4PNK

4-LIGHT CAGE PENDANT

Español p. 13

ATTACH YOUR RECEIPT HERE



800053

APPROVED FOR USE
IN DAMP LOCATIONS

Purchase Date _____

Thank you for purchasing this ALLEN + ROTH product.

Questions, problems or missing parts?

Before returning, contact us on: **866-439-9800**, 8 a.m. - 8 p.m., EST,
Monday - Sunday or **ascs@lowes.com**.

TABLE OF CONTENTS

Package Contents 3

Hardware Contents 4

Safety Information 4

Preparation 5

Assembly Instructions 6

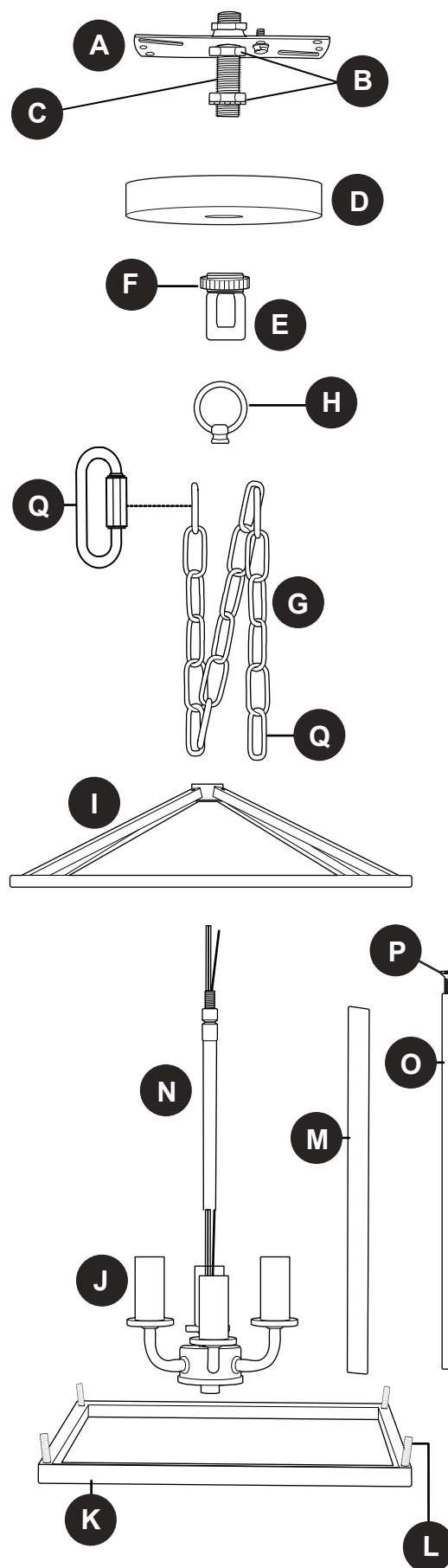
Care and Maintenance 12

Troubleshooting 12

Warranty 12

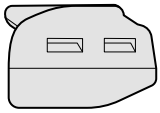
PACKAGE CONTENTS

PART	DESCRIPTION	QUANTITY
A	Mounting Strap	1
B	Hex Nut (preassembled to Threaded Rod (C))	2
C	Threaded Rod (preassembled to Mounting Strap (A))	1
D	Canopy	1
E	Screw Collar Loop (preassembled to Threaded Rod (C))	1
F	Threaded Ring (preassembled to Screw Collar Loop (E))	1
G	Chain	1
H	Fixture Loop (preassembled to Fixture (J))	1
I	Frame	1
J	Fixture	1
K	Base	1
L	Post (preassembled to Base (K))	4
M	Rod	4
N	Fixture Rod (preassembled to Fixture (J))	1
O	Support Rod	4
P	Screw (preassembled to Support Rod (O))	4 + 2 extra
Q	Connecting Chain Link (preassembled to Chain (G))	2



HARDWARE CONTENTS (shown actual size)

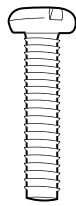
AA



Lever Wire
Connector

Qty. 3

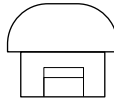
BB



Machine
Screw

Qty. 2

CC



Screw Cap

Qty. 4
+ 2 extra



SAFETY INFORMATION

READ AND SAVE THESE INSTRUCTIONS.



DANGER

- For your protection and safety, carefully read and understand the information provided in this manual completely before attempting to assemble, install or operate this product. Failure to do so could lead to electrical shock, fire or other injuries that could be hazardous or even fatal.
- **TURN OFF ELECTRICITY** at main fuse box (or circuit breaker box) before beginning installation by removing the fuse (or switching the circuit breaker off).
- **DO NOT** connect this fixture to an electrical system that does not provide a means for equipment grounding. Never use a fixture in a two-wire system that is not grounded. Installing a fixture into an electrical system not having a proper grounding means could cause metal parts of the fixture to carry electrical currents if any of the fixture wires, wire connections or splices were to become broken, cut or loose during the mounting or normal operation of the fixture. Under this condition, anyone coming in contact with the fixture would be subject to electrical shock, which could cause serious injury or death.
- **DO NOT** connect the BARE or GREEN insulation fixture ground wire to the BLACK (HOT) current-carrying wire or the WHITE (NEUTRAL) house wire. Connection of the BARE or GREEN fixture ground wire to the BLACK or WHITE house wires may cause metal parts of the fixture to carry electrical currents. Under this condition anyone coming in contact with the fixture will receive electrical shock, which could cause serious injury or death.
- **DO NOT** damage or cut the wire insulation (covering) during installation of fixture. **DO NOT** permit wires to contact any surface having a sharp edge. To do so may damage or cut the wire insulation, which could cause serious injury or death from electrical shock.



WARNING

- All electrical connections must be in agreement with local codes and ordinances, the National Electric Code (NEC) and ANSI/NFPA 70-1999. Contact your municipal building department to learn about your local codes, permits and/or inspections. Risk of fire – most dwellings built before 1985 have supply wire rated for 140 ° F. Consult a qualified electrician before installation.
- To avoid personal injury, the use of gloves may be necessary while handling fixture parts with sharp edges.

SAFETY INFORMATION

WARNING

- DO NOT suspend any fixture by the house wires. A fixture must always be mounted directly to a mounting strap which is first attached to the outlet box. Wire connectors will not support the weight of a fixture. Suspending a fixture by the house wires and wire connectors will result in the fixture falling, with the possibility of personal injury and the danger of electrical shock or fire.
- To reduce the risk of fire, electrical shock, or personal injury, wire connectors provided with this light fixture are designed to accept only one 12-gauge house wire and two lead wires from the light fixture. If your house wire is larger than 12-gauge or there is more than one house wire to connect to the corresponding fixture lead wires, consult an electrician for the proper size wire connectors to use.
- To reduce the risk of damage to the fixture, DO NOT use power tools to assemble any part of the fixture.

CAUTION

- If you are not sure the lighting system has a grounding means, DO NOT attempt to install this fixture. Contact a qualified, licensed electrician for information regarding the proper grounding methods as required by the local electrical code in your area.
- All fixtures must be mounted to an outlet box that is supported by the building structure.
- DO NOT use bulbs having a wattage greater than the maximum value stated on the fixture. The use of bulbs with higher wattage than specified will increase temperatures and risk of fire.
- If a dimmer control switch is used with this fixture, obtain professional advice to determine the correct type to use as well as the electrical rating required.

PREPARATION

Before beginning assembly of product, make sure all parts are present. Compare parts with package contents list and hardware contents list. If any part is missing or damaged, do not attempt to assemble the product.

Estimated Assembly Time: 45 minutes

Tools Required for Assembly (not included): Flathead Screwdriver, Phillips Screwdriver, Wire Strippers, Pliers, Wire Cutters, Safety Glasses, Stepladder, Electrical Tape

Helpful Tools (not included): A/C Tester Light, Do-It-Yourself Wiring Handbook, Soft Cloth

ASSEMBLY INSTRUCTIONS

1. Turn off circuit breakers and wall switch to the fixture supply line leads.

⚠ DANGER: Failure to disconnect power supply prior to installation may result in serious injury or death.


2. Remove existing fixture and disconnect all electrical wiring.

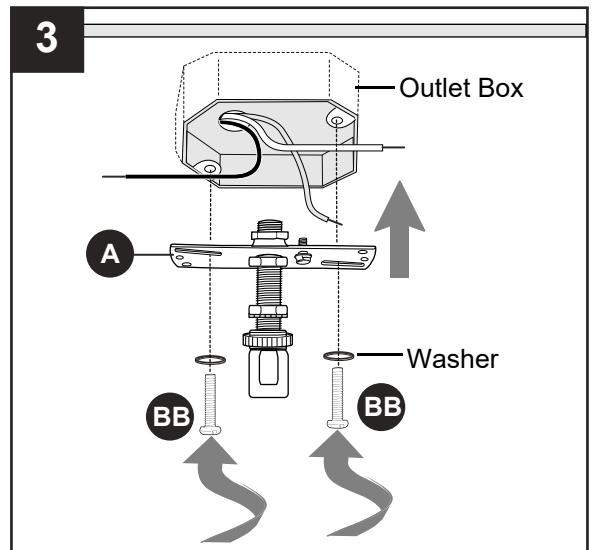
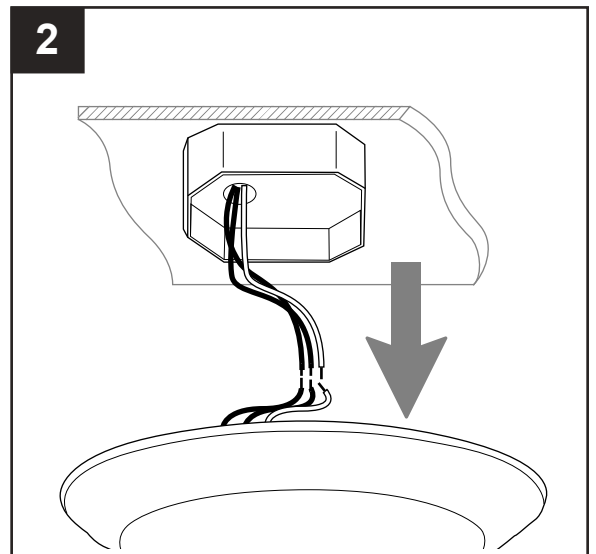
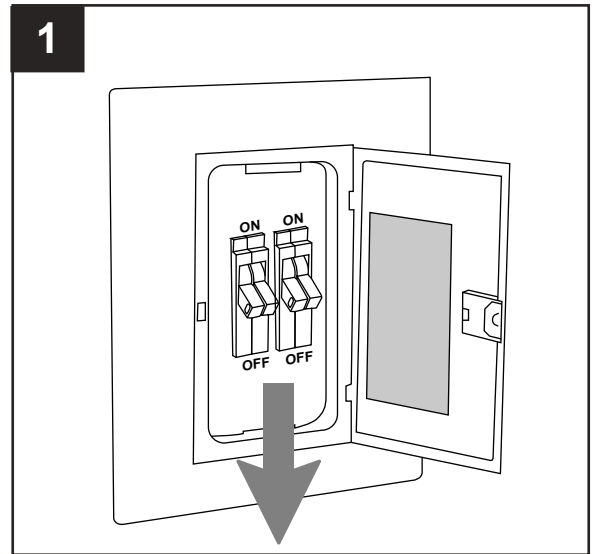
3. Attach mounting strap (A) to outlet box (not included) using the existing washers and outlet box screws or the machine screws (BB). Tighten machine screws (BB) completely to secure mounting strap (A) to outlet box.

NOTE: If the outlet box screws required for your outlet box are of a different size than the machine screws (BB), consult with a licensed electrician before proceeding.

⚠ CAUTION: Make sure the outlet box can support 35 lbs. hanging weight. Use *metal* outlet box; plastic outlet boxes are not recommended.

Hardware Used

BB Machine Screw  x 2



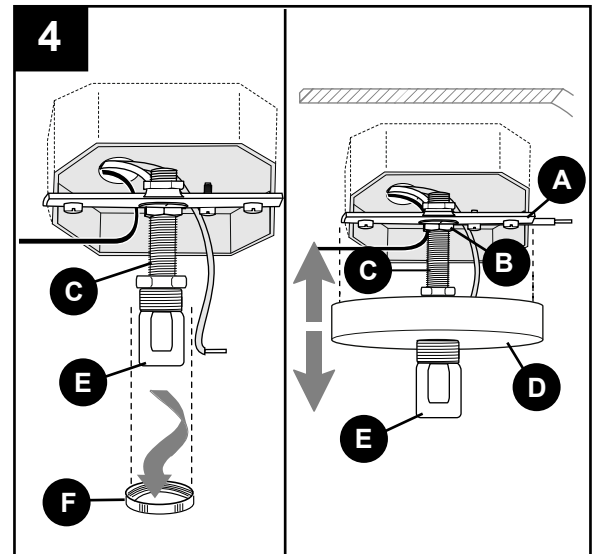
ASSEMBLY INSTRUCTIONS

4. Remove threaded ring (F) from screw collar loop (E) and save for later use.

TEMPORARILY place canopy (D) over mounting strap (A) to determine amount of adjustment necessary for threaded rod (C).

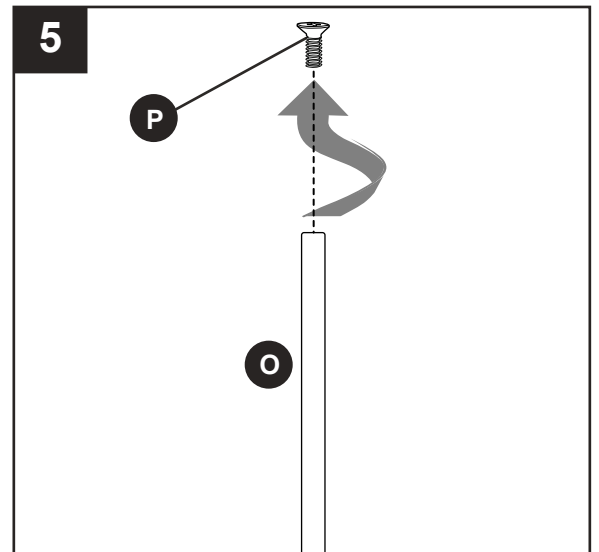
IMPORTANT: Canopy (D) should fit flush against ceiling when mounted. Once threaded rod (C) is adjusted, tighten hex nuts (B) securely against mounting strap (A).

Set canopy (D) aside.



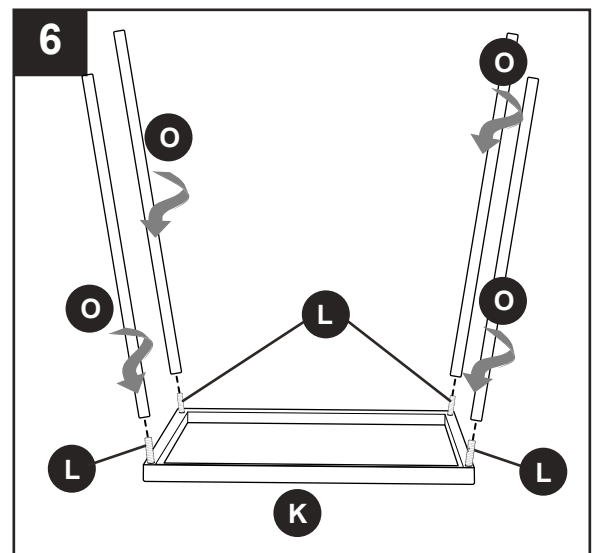
5. Remove screws (P) from support rods (O).

Save screws (P) for later use.



6. Place base (K) on a flat surface with posts (L) facing up. Thread one support rod (O) onto each post (L). Tighten each support rod (L) completely.

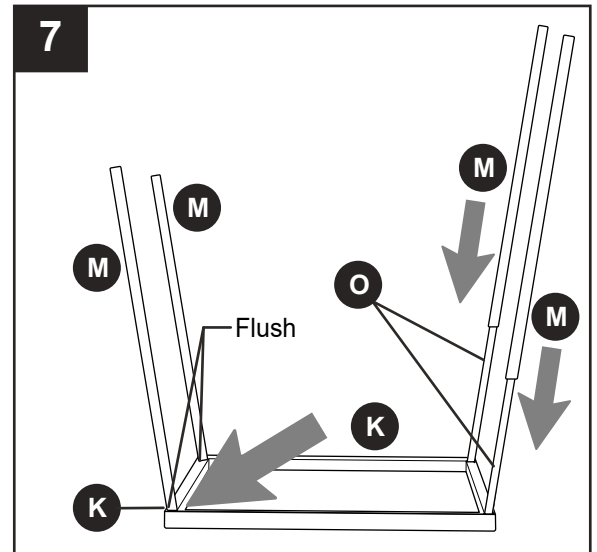
⚠ CAUTION: Failure to tighten each support rod (O) completely can result in the product appearing not to be level when hung.



ASSEMBLY INSTRUCTIONS

7. Slide one rod (M) over each support rod (O).

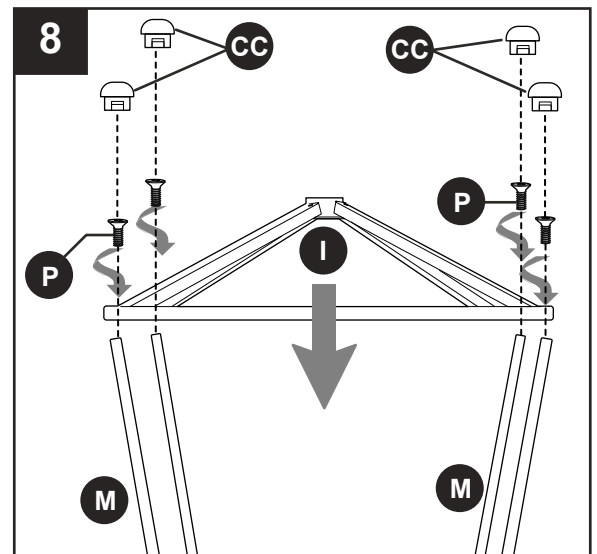
IMPORTANT: Make sure to turn rods (M) so that EACH rod (M) is flush against the base (K).



8. Place frame (I) on top of rods (M), aligning holes in frame (I) with holes in support rods (O). Re-insert screws (P) previously removed (Step 5, page 7), partially tightening each screw (P).

! CAUTION: Do NOT completely tighten screws (P) until all screws (P) have been partially attached to frame (I).

Tighten each screw (P). Place a screw cap (CC) over each screw (P).



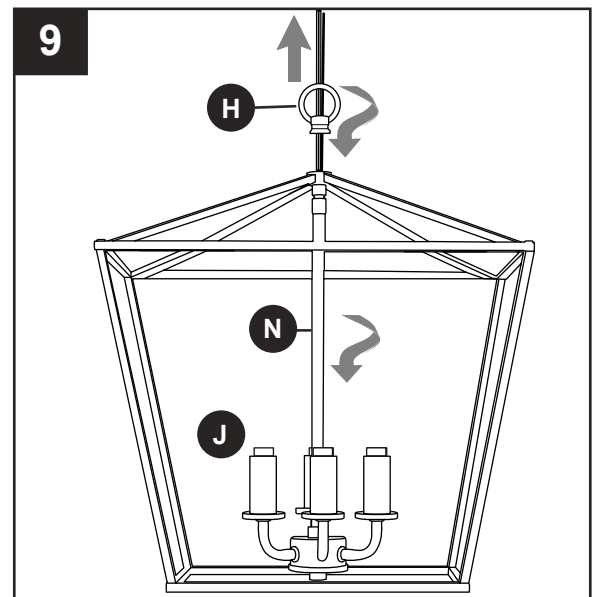
Hardware Used



9. Unwrap BARE fixture wire from fixture wires.

Thread fixture rod (N) onto fixture (J) and tighten completely. Then, attach fixture loop (H) to fixture rod (N).

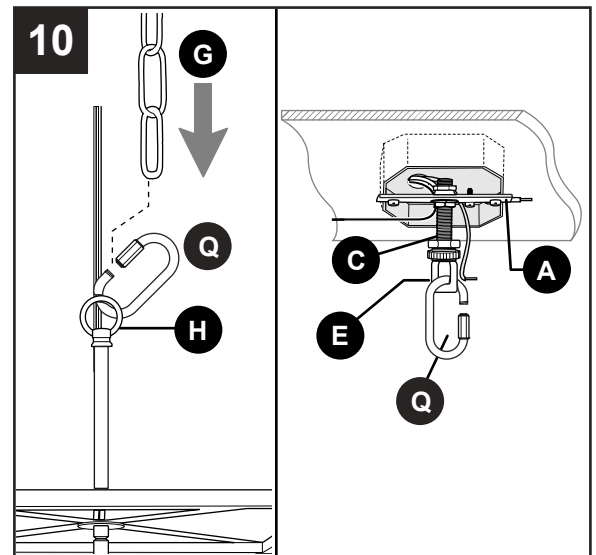
! CAUTION: Keep cord taut during installation, ensuring it does not get tangled or pinched.



ASSEMBLY INSTRUCTIONS

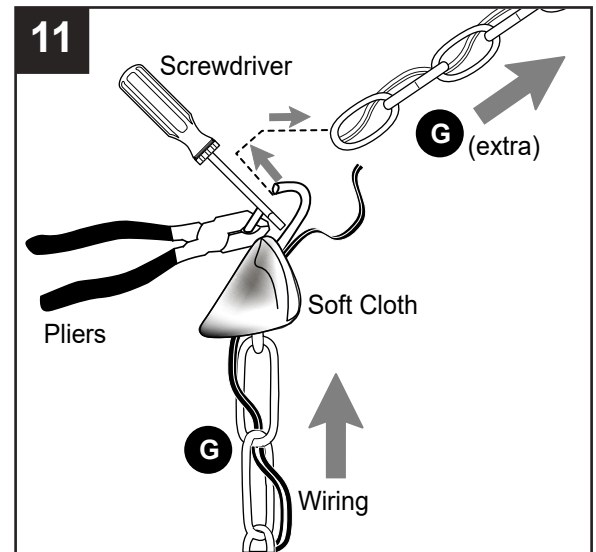
10. Locate connecting chain links (Q), one at each end of the chain (G), and open both of them. Attach one connecting chain link (Q) to fixture loop (H) and then close this connecting chain link (Q).

Hook the other connecting chain link (Q) to screw collar loop (E) at the bottom of threaded rod (C) on mounting strap (A)--leave this connecting chain link (Q) open for now.



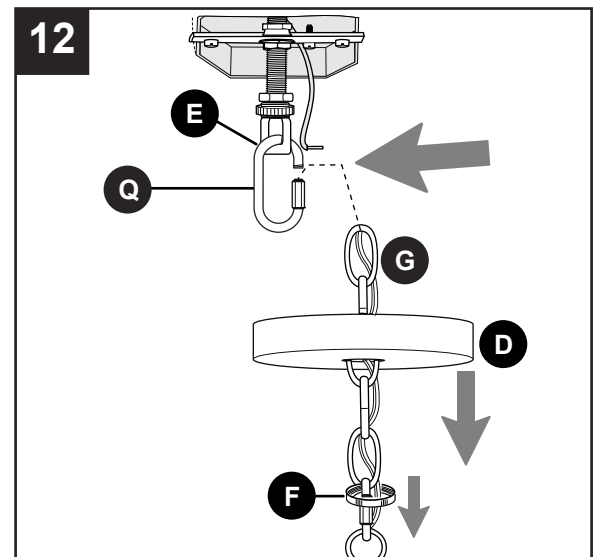
11. Determine the hanging length for fixture (J). ***If you will be using the chain (G) as is, please skip to the next paragraph in this step. If you wish to shorten chain (G),*** use pliers, a flathead screwdriver and a soft cloth (none included) to open the link of chain (G) at length chosen. Remove any extra chain (G) at this time, including the link that was opened to shorten the chain.

Feed wiring from fixture (J) up through chain (G) to pre-determined length.



12. Feed chain (G) and wiring through threaded ring (F) and then canopy (D), allowing threaded ring (F) and canopy (D) to slide down chain (G) until they reach the top of the frame (I).

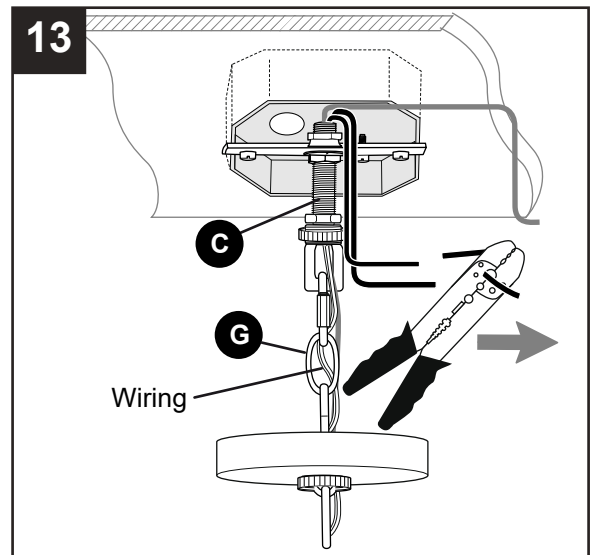
Lift chain (G) toward screw collar loop (E) and hang chain (G) on connecting chain link (Q). Close connecting chain link (Q).



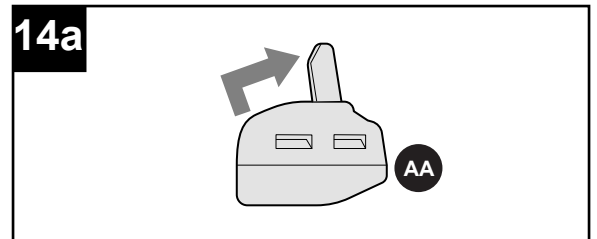
ASSEMBLY INSTRUCTIONS

13. Feed wiring through hole at bottom of threaded rod (C). Gently push wiring until it comes through top of threaded rod (C). Pull all wiring until there is little to no extra slack left in the wires running through the chain (G).

Prepare wiring by stripping 1/2 in. of insulation from wire ends using wire strippers (not included).



- 14a. **IMPORTANT:** Each wire connection is made by firmly raising the levers on each lever wire connector (AA), as shown. Then, ONE wire is inserted into each opening according to instructions below.



- 14b. Insert BARE/GREEN ground wire from outlet box and BARE ground wire from fixture (J) into openings in one lever wire connector (AA).

Insert RIBBED wire from fixture (J) and WHITE wire from outlet box into openings in another lever wire connector (AA).

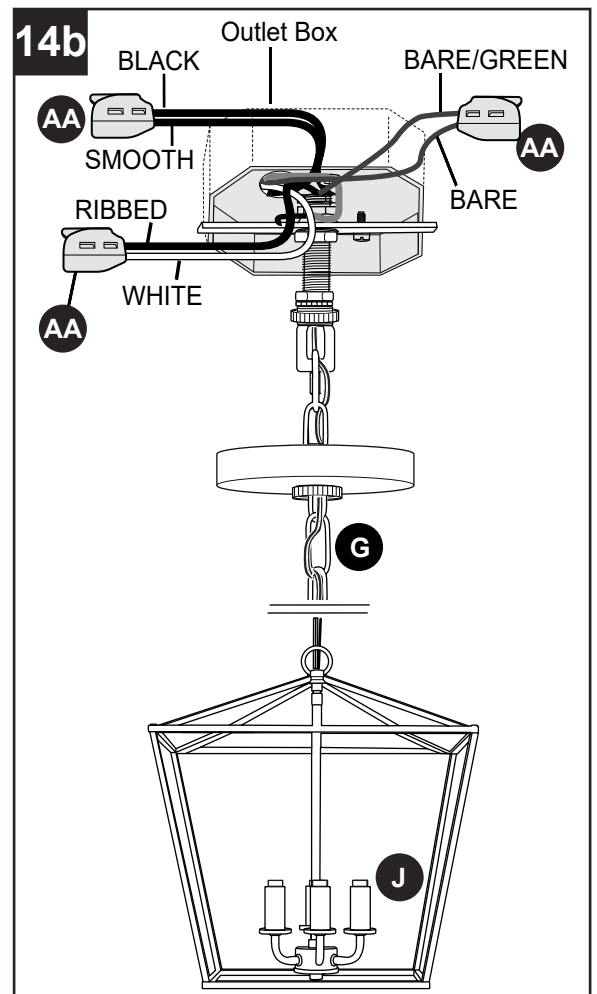
Insert SMOOTH wire from fixture (J) and BLACK wire from outlet box into openings in the third lever wire connector (AA).

! WARNING: NEVER connect ground wire to WHITE or BLACK power supply wires.

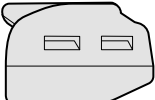
! WARNING: In order for wire connections to be secure, all levers on the lever wire connectors (AA) must be completely returned to their original position.

GENTLY pull on wires in each lever wire connector (AA) to confirm the lock is engaged and that wires are secure.

! WARNING: To reduce the risk of fire, electrical shock or personal injury, lever wire connectors (AA) are designed to accept only one 12-gauge house wire and one lead wire from the light fixture. If your house wire is larger than 12-gauge or there is more than one house wire to connect to the corresponding fixture lead wires, consult an electrician for the proper size lever wire connectors to use.



Hardware Used

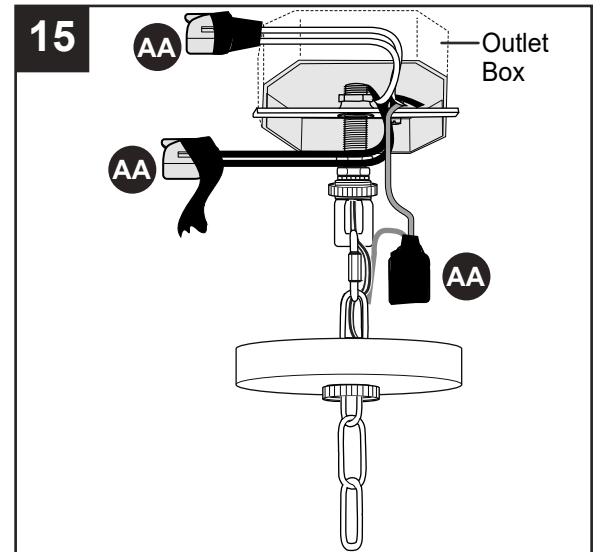
AA	Lever Wire Connector		x 3
----	----------------------	---	-----

ASSEMBLY INSTRUCTIONS

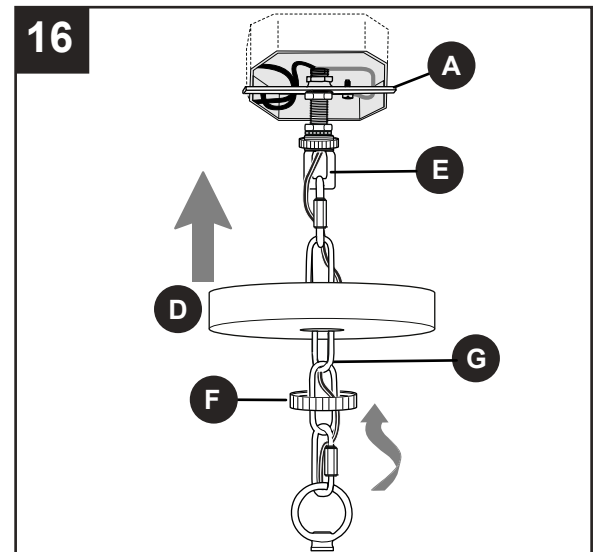
15. Wrap electrical tape (not included) around each individual lever wire connector (AA) down to the wire. Push lever wire connectors (AA) gently back into outlet box.

⚠ WARNING: Make sure no bare wire or wire strands are visible after making connections.

Carefully push excess wiring into outlet box.



16. Slide canopy (D) and threaded ring (F) up the chain (G). Secure canopy (D) to mounting strap (A) by tightening threaded ring (F) to screw collar loop (E).

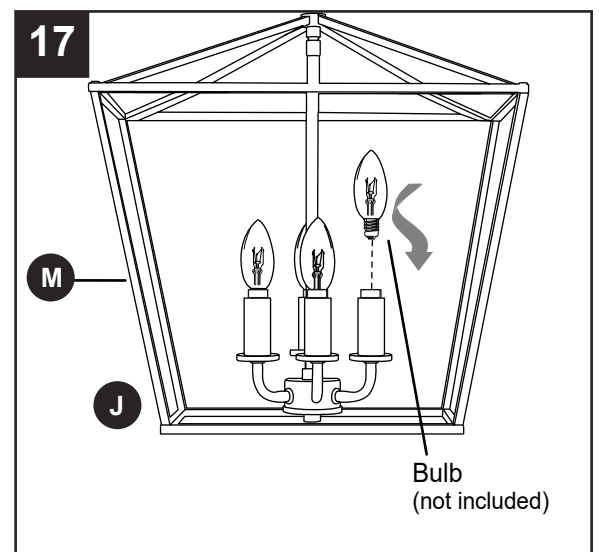


17. Install 4 candelabra-base 60-watt max. incandescent bulbs (not included) or CFL/LED equivalent.

⚠ WARNING: When replacing bulb(s), please allow bulb(s), rods (M) and fixture (J) to cool down before touching.

Restore power and test fixture (J).

If lights do not function, please refer to TROUBLESHOOTING on the following page.



CARE AND MAINTENANCE

- Shut off main power supply. Wipe with soft cloth. Do not use an abrasive cleaner.

TROUBLESHOOTING

⚠ WARNING: Before beginning work, shut off the power supply to avoid electrical shock.

PROBLEM	POSSIBLE CAUSE	CORRECTIVE ACTION
Bulb(s) will not light.	1. Bulb(s) is/are burned out. 2. Power is OFF. 3. Faulty connection.	1. Replace light bulb(s). 2. Make sure power supply is ON. 3. Check wiring and all connections.
Fuse blows out or circuit breaker trips.	1. Crossed wires. 2. Power wire is grounding out.	1. Check wiring. 2. Check all connections.

WARRANTY

The distributor warrants all of its lighting fixtures against defects in materials and workmanship for one (1) year from the date of purchase. If within this period the product is found to be defective, take a copy of the bill of sale as a proof of purchase and the product in its original carton to the place of purchase. The distributor will, at its option, repair, replace or refund the purchase price to the consumer. All costs of installation and removal of the fixture is the responsibility of the consumer. This warranty does not cover fixtures becoming defective due to misuse, accidental damage or improper handling and/or installation and specifically excludes liability for direct, incidental or consequential damages. As some states do not allow exclusions of limitations on an implied warranty, the above exclusion and limitation may not apply. This warranty gives you specific rights and you may also have other rights which may vary from state to state.