

Installation instructions

Refrigerator water filter

A replacement for the following water filters:

GE® filters

XWF, WR17X30702, GBE21, GDE21, GDE25, GFE24, GFE26, GNE21, GNE25, GNE27, GWE19, GYE18, QNE27, GSE25, GSS23, GSS25, GZS22, PSE25, CZS22, GNE27JSMSS, GNE27JMMES, GNE27ESMSS, GNE27JGMBB, GNE27JGMWW, GSE23, GSE23G, GSE26, CFE26, XFE26, CWE19



Tested and Certified by NSF International against **NSF/ANSI Standard 42** in model EFF-6048S for the reduction of the claims specified on the Performance Data Sheet, and to **NSF/ANSI 372 (≤0.25% lead)**.

Installation instructions

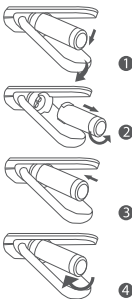
Before installation:

- Shut off the cold-water supply to the refrigerator before installation. Turn on the refrigerator water dispenser to release water pressure, letting water drain from the pipe completely.
- It is normal for black carbon fines (particles) to appear on the outside of your filter. This happens when the filter is jarred in shipping. It is safe to simply wipe it off.
- The filter connectors are larger to prevent leaks. You might have to twist the filter hard to make sure the connection is secure.

Installing the filter in a bottom freezer refrigerator

1. Open the filter cartridge housing by squeezing the 2 front tabs and gently pulling down.
2. Remove old filter by slowly rotating it to the left. A small amount of water may drip down.
3. Line up the ports on the filter with the ports on the filter cartridge holder, and gently insert the filter.
4. Slowly turn the filter to the right until it stops. As you turn the filter, it will automatically adjust itself into position. The filter will move 90 degrees, until the arrow on the filter aligns with the arrow on the filter cartridge holder.

Note: Please do not overtighten.



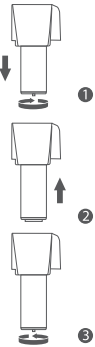
5. Slowly push the filter up into the clips. Close the cover by gently pushing the lid upwards until the tabs lock into place.
6. Run water from the dispenser for 2 gallons or approximately 5 minutes to clear the system. Water may spurt out and air bubbles may be visible during this process. If water is not flowing, check to make sure the filter has been fully rotated to the right.
7. Press and hold the RESET WATER FILTER pad (only on select models) on the dispenser for three seconds.

Installing the filter cartridge in a side by side refrigerator

1. Rotate 90 degrees to the left to remove the old filter.
2. Line up the arrow on the filter with the arrow on the filter cartridge holder. Gently push the top of the new filter up inside the holder.
3. Slowly turn the filter to the right until it stops. As you turn the filter, it will automatically adjust itself into position. The filter will move 90 degrees.

Note: Please do not overtighten.

4. Run water from the dispenser for 2 gallons or approximately 5 minutes to clear the system. Water may spurt out and air bubbles may be visible during this process. If water is not flowing, check to make sure the filter has been fully rotated to the right.
5. Press and hold the RESET WATER FILTER pad (only on select models) on the dispenser for three seconds.



Resetting your filter indicator:

Note: These are the most common filter reset instructions. If the instructions don't work for your refrigerator brand, see the documentation that came with your refrigerator.

Refrigerator brand	Instructions
GE® systems	Press and hold the reset water filter button on the dispenser for 3 seconds.
Kenmore® systems	The filter reset for Kenmore refrigerators varies by model. See the documentation that came with your refrigerator.

Storage and maintenance:

- Replace your filter every 6 months or 200 gallons to prevent bacteria and fungus growth in your filter, supply lines, and storage tank.

6048-42

- Keep your unused filters in a cool, dark, and dry place until you need them.
- If you do not use your water dispenser for more than four days, run two gallons of water before using it to prevent bad tasting water.

Frequently asked questions:

- Q:** Why is it difficult to twist the new filter into the filter housing?
- A:** The connector may expand because of water pressure. Therefore, it is recommended you push the new filter in with a little bit of force, but not too hard. Then turn it clockwise.
- Q:** Do I need to flush the filter after installation?
- A:** After installation, it is highly recommended you run water for a few minutes before using. Water filters are made from advanced coconut carbon block, so there are some carbon fines in the filter. Flushing removes the carbon fines to produce clean water.
- Q:** Must the filter be changed every 6 months?
- A:** Yes, you must replace the filter every six months or sooner if water flow is reduced or if there is heavy sediment / rust present. Over-used filters will degrade the filtration performance.

⚠ Warning:

To reduce the risk of property damage due to water leakage, this filter **MUST** be installed in accordance with the manufacturer's specifications and instructions. This filter unit must be replaced every 200 gallons or 6 months. Failure to follow instructions and operating specifications will void your warranty. Further, manufacturer assumes no responsibility or liability for damages arising out of misuse of the product. GE® is a registered trademark of General Electric Corp. GE® is used for reference purposes only. Kenmore® is a registered trademark of KCD IP, LLC. Kenmore® is used for reference purposes only.

*The service life mentioned above is subject to chlorine reduction. Actual result varies according to the local water quality.

Manufacturer Technical Support

Tel: 1-888-352-3558 (U.S.)
E-mail: service@water-filter.com

Performance data sheet

System Model No.: **EFF-6048S**

Operating specifications:

Operating Temperature: 33 -100°F/0.6 - 38°C
Working Pressure: 20 -100 psi/140 - 689 kPa
Rated Capacity: 200 gallons/757 litres
Flow Rate: 0.5 gpm/1.9 lpm

Substance reduction:

The system has been tested and certified by the NSF International according to NSF/ANSI Standard 42 for the reduction of the substances listed below. The concentration of the indicated substances in water entering the system was reduced to a concentration less than or equal to the permissible limit for the water leaving the system, as specified by NSF/ANSI Standard 42. While testing was performed under standard laboratory conditions, actual performance may vary.

Substance	Inf. Average	NSF Specified Challenge Concentration	Ave. % Reduction(%)	Average Product Water Concentration	Max Permissible Product Water Concentration	NSF Reduction Requirements	NSF Test Report
Chlorine Taste and Odor	2.1 mg/L	2.0mg/L±10%	97.6%	0.05mg/L	N/A	≥50%	J-00356469



Do not use with water that is microbiologically unsafe or of unknown water quality without adequate disinfection before or after the system. Systems certified for cyst reduction may be used with disinfected water that may contain filterable cysts.



Made in China V040
Qingdao Ecopure Filter Co., Ltd.