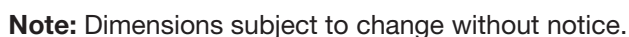


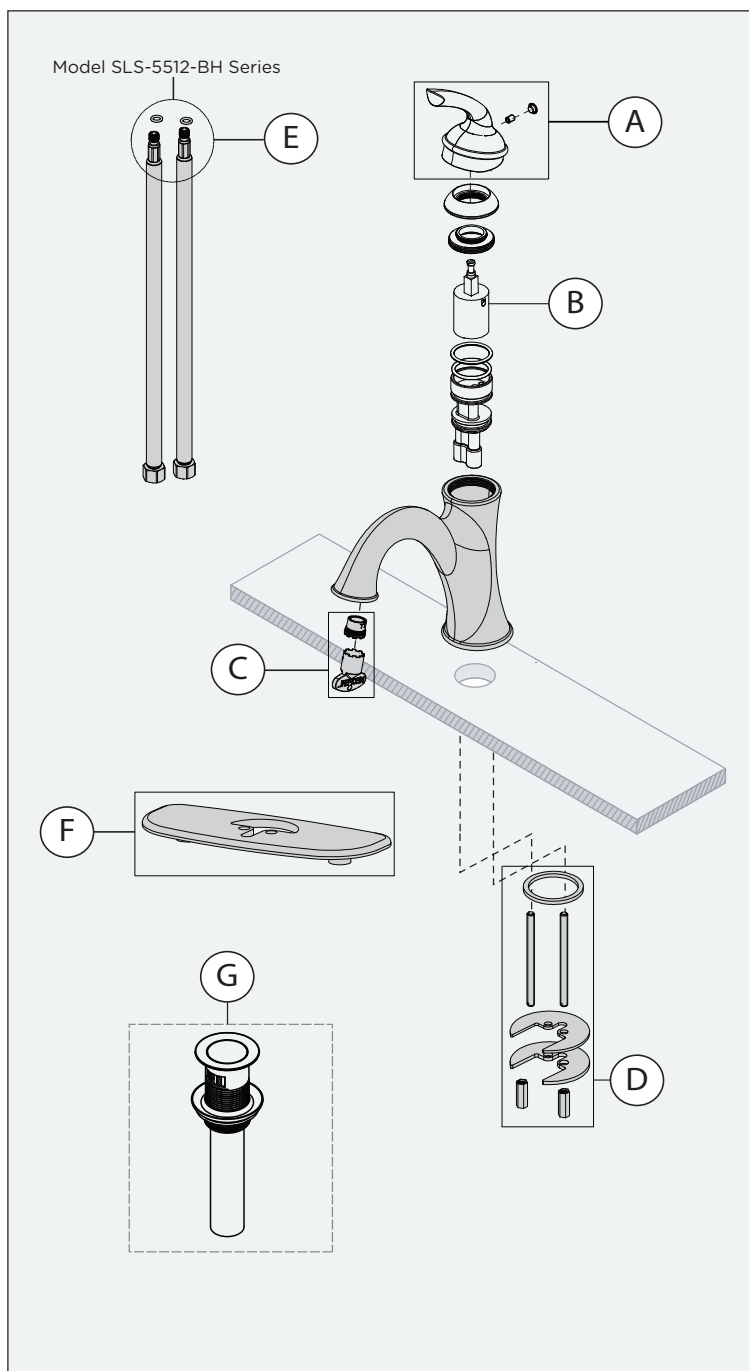


Operation & Maintenance Manual

Dimensions



Parts Breakdown



Replacement Parts		
Item	Description	Part Number
A	Handle Kit	RL-041*
B	Temperature Cartridge	RL-042
C	Aerator and Wrench(2.2) Aerator and Wrench(1.5) Aerator and Wrench(0.5)	LN-333-KIT FLR-102-1.5-KIT FLR-102-0.5
D	Mounting Hardware	RL-040A
E	Braided Hoses	RL-007
F	Optional 4" Deck Plate includes Mounting Hardware	LN-01934*
G	Push Pop Drain Assem- bly	RL324*

***Note:** When ordering replacement parts for faucets with an optional decorative finish, append appropriate three letter finish suffix code to part numbers marked with an asterisk (*).

Tools Required	
Adjustable Wrench	
Allen Wrench 3/32"	
Plumber Putty	
Plumber Tape	
(2) 1/2 in Supply Lines	
Basin Wrench	
Goggles	

Installation

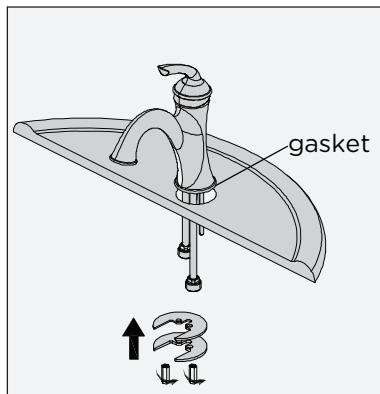


If replacing an older faucet ensure water supply is turned OFF before removing, then turn faucet control valve ON to relieve water pressure.

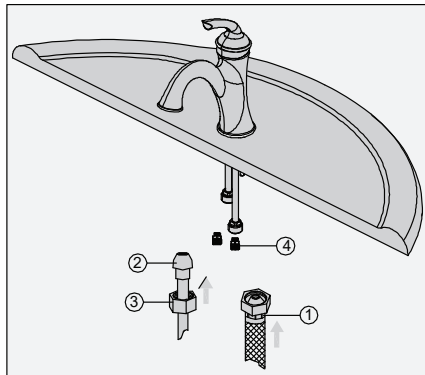


DO NOT use pipe dope or thread sealant on drain assembly, or any plastic threaded components.

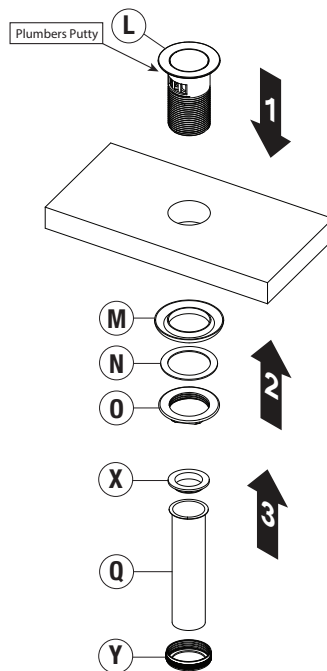
- 1) Shut off water supplies. Screw metal thread rods upwards into body of faucet. Use cross-slots in body of faucet for screw driver. Place new faucet through holes in top of sink. From under sink slide washers onto threaded. Secure with washers and nuts.



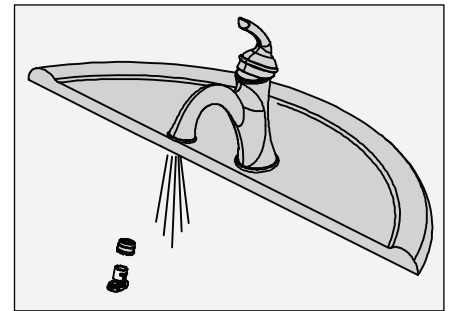
- 2) Make connections to water lines. When waterway is copper tube water inlet assy, use 1/2" IPS faucet connections (1) or use the supplied coupling nuts (3) with 3/8" O.D. ball-nose risers (2). When waterway is stainless steel braided hose water inlet assy, first use 9/16" and 1/2" connections (4) to connect the hose, use 1/2" IPS faucet connections (1) or use the supplied coupling nuts (3) with 3/8" O.D. ball-nose risers (2). Use wrenches to tighten connections. **DO NOT** overtighten.



- 3) **Push Pop Install:** Insert drain body (L) into drain opening. From below, Tighten locking nut (O) with gasket (M) and washer (N) to flange. Tighten tail nut (Y) with washer (X) to secure tail pipe (Q). **DO NOT** overtighten.

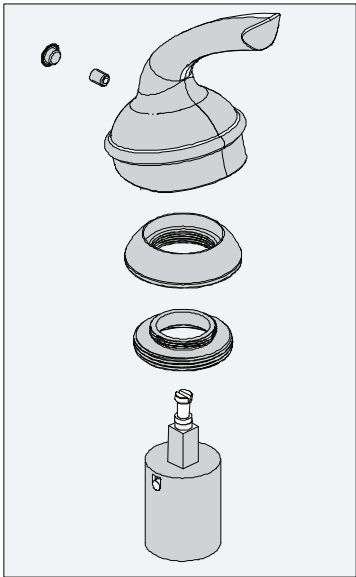


- 4) Important: After installation is completed, remove aerator. Turn on water supply and allow both hot and cold water to run for at least one minute each. While water is running, check for leaks. Replace aerator.



Maintenance

1) If faucet leaks underneath handle
or Water does not completely shut
off: Replace cartridge.



Troubleshooting Chart

Problem	Cause	Solution
Finish is spotting.	Elements in water supply may cause water staining on finish.	Clean finished trim area with a soft cloth using mild soap and water or a non-abrasive cleaner and then quickly rinse with water.