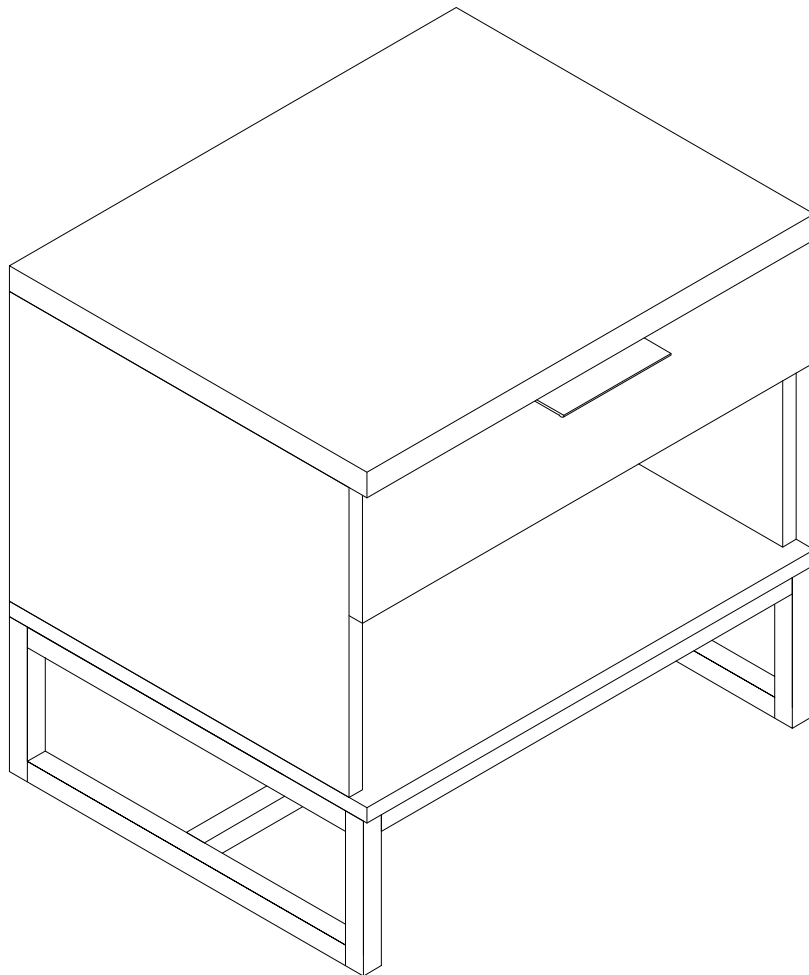


# Night Stand

## Assembly Instructions

Contains One Night Stand and Hardware



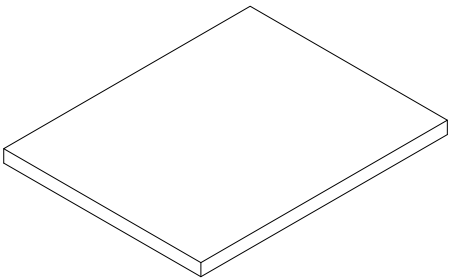
Night Stand  
Contains One (1) Night Stand and Hardware

**IMPORTANT NOTE:**  
Carefully remove all the parts from the box. Arrange on a flat surface and verify you have all of the following parts and hardware

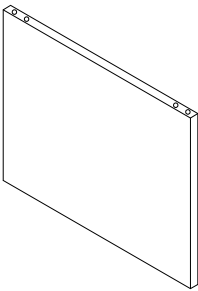
TOOLS REQUIRED:  
-Phillips Screwdriver

PARTS LIST

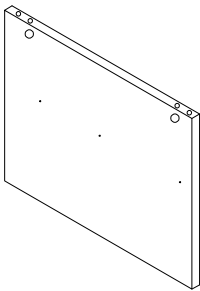
1.Top Panel (1 PC)



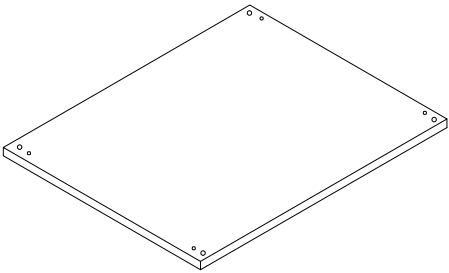
2.Left Side Panel (1 PC)



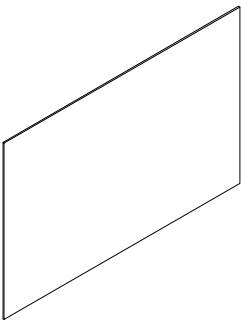
3.Right Side Panel (1 PC)



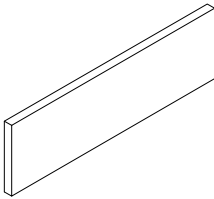
4.Bottom Panel (1 PC)



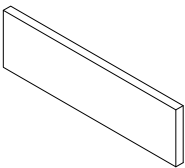
5.Back Panel (1 PC)



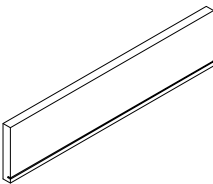
6.Drawer Front Panel (1 PC)



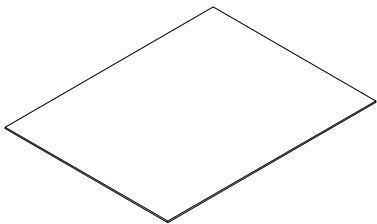
7.Drawer Side Panel (2 PCS)



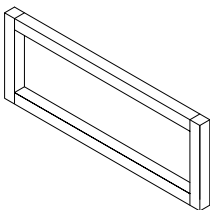
8.Drawer Back Panel (1 PC)



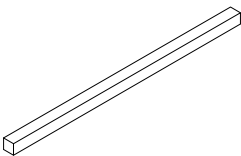
9.Drawer Bottom Panel (1 PC)



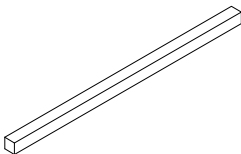
10.Metal Frame Legs (2 PCS)



11.Metal Support Legs (2 PCS)

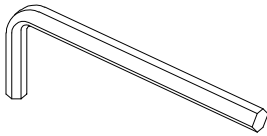


12.Metal Support Legs (1 PC)

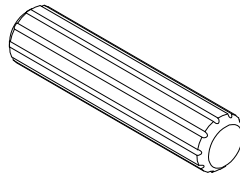


# HARDWARE LIST

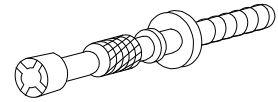
A.Allen Key (1 PC)



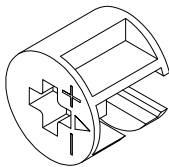
B.Dowel (8 PCS)



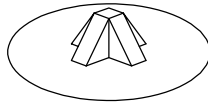
C.Minifix Bolt (4 PCS)



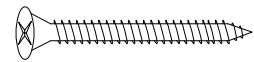
D.Minifix House (4 PCS)



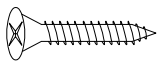
E.Minifix Cap (4 PCS)



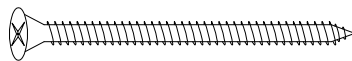
F.Screw 32mm (6 PCS)



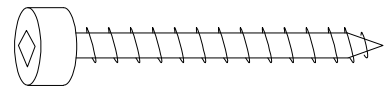
G.Screw 16mm (22 PCS)



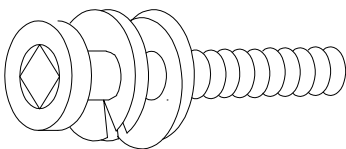
H.Screw 50mm (8 PCS)



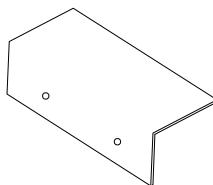
I.JCBC W 40mm (4 PCS)



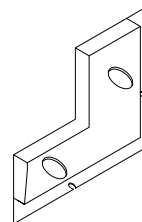
J.JCBC Screw 50mm  
(6 SET)



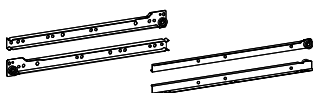
K.Handle (1 PC)



L.L Bracket (4 PCS)



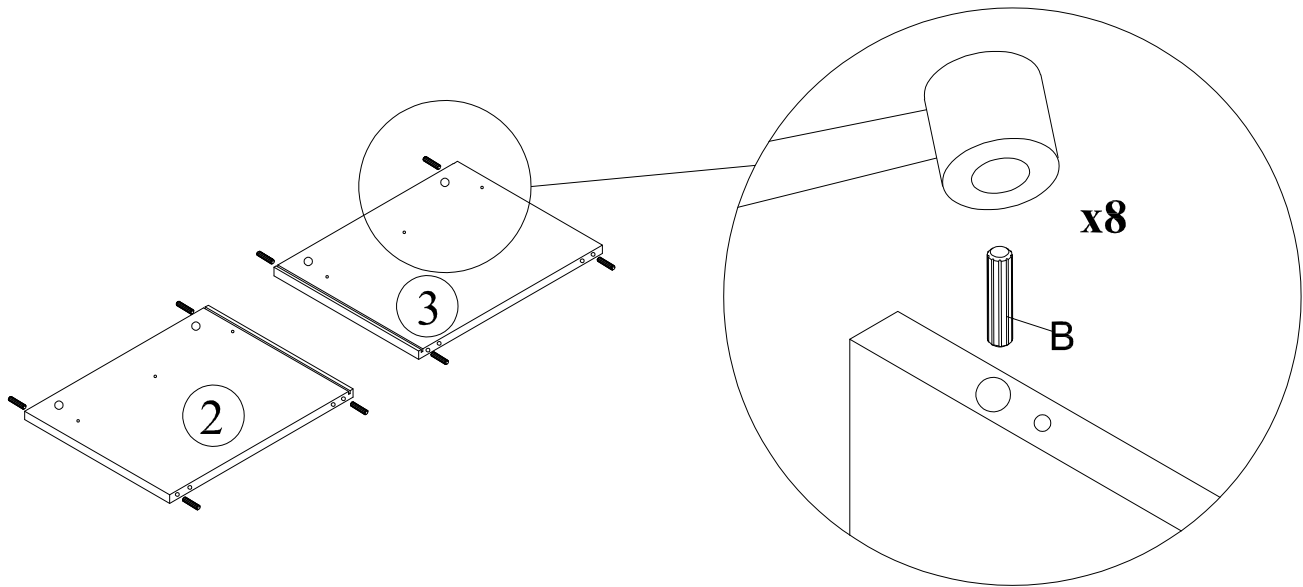
M.Drawer Slider (1 SET)



# ASSEMBLY INSTRUCTIONS

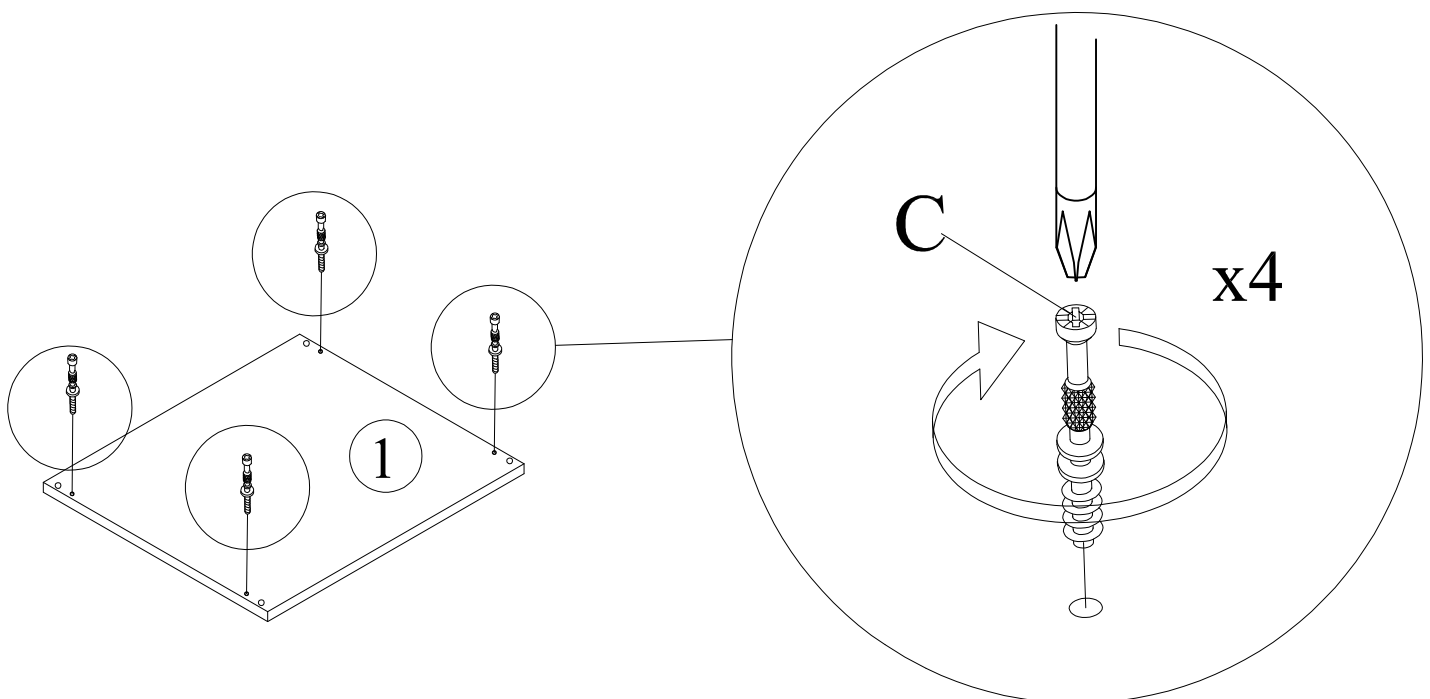
## STEP 1

Tap Dowels (B) into the Left and Right Side Panels (Part 2) and (Part 3) in the larger holes provided.



## STEP 2

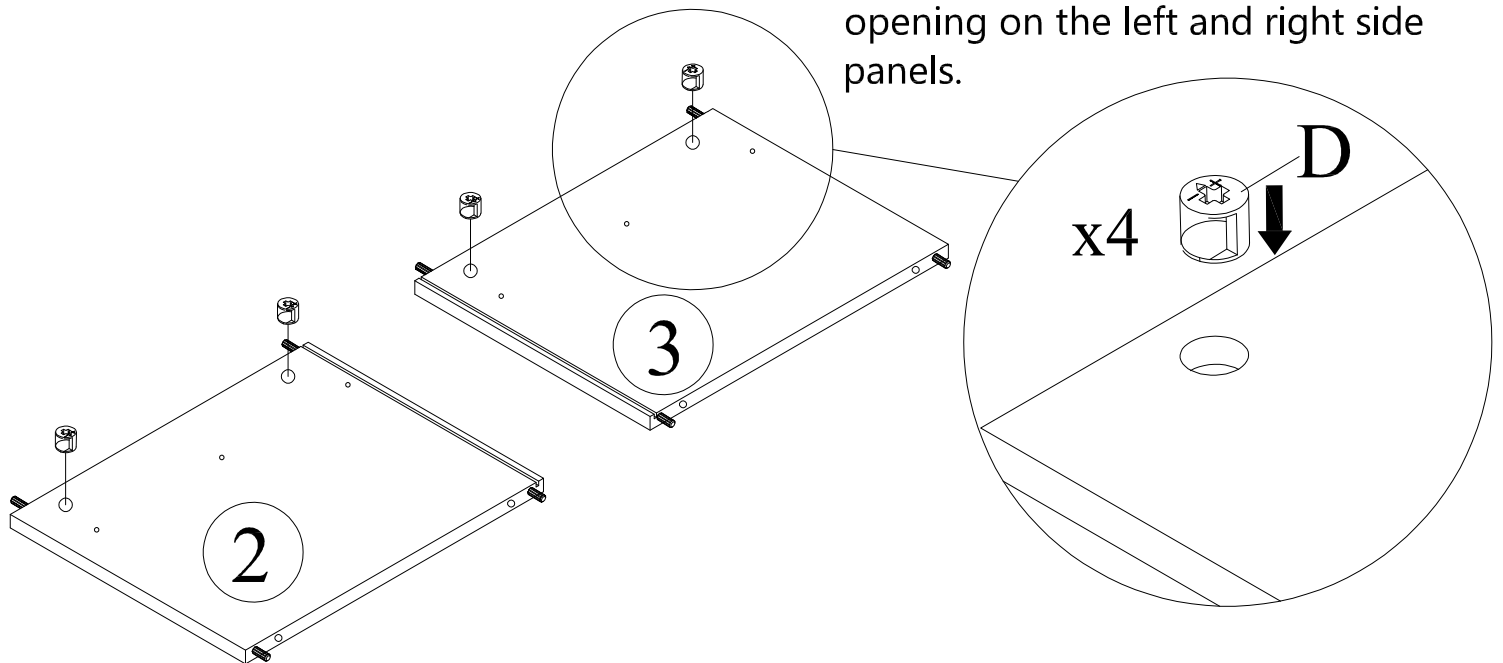
Using a Phillips Head Screwdriver, attach Minifix Bolts (Part C) to the Top Panel (Part 1).



# ASSEMBLY INSTRUCTIONS

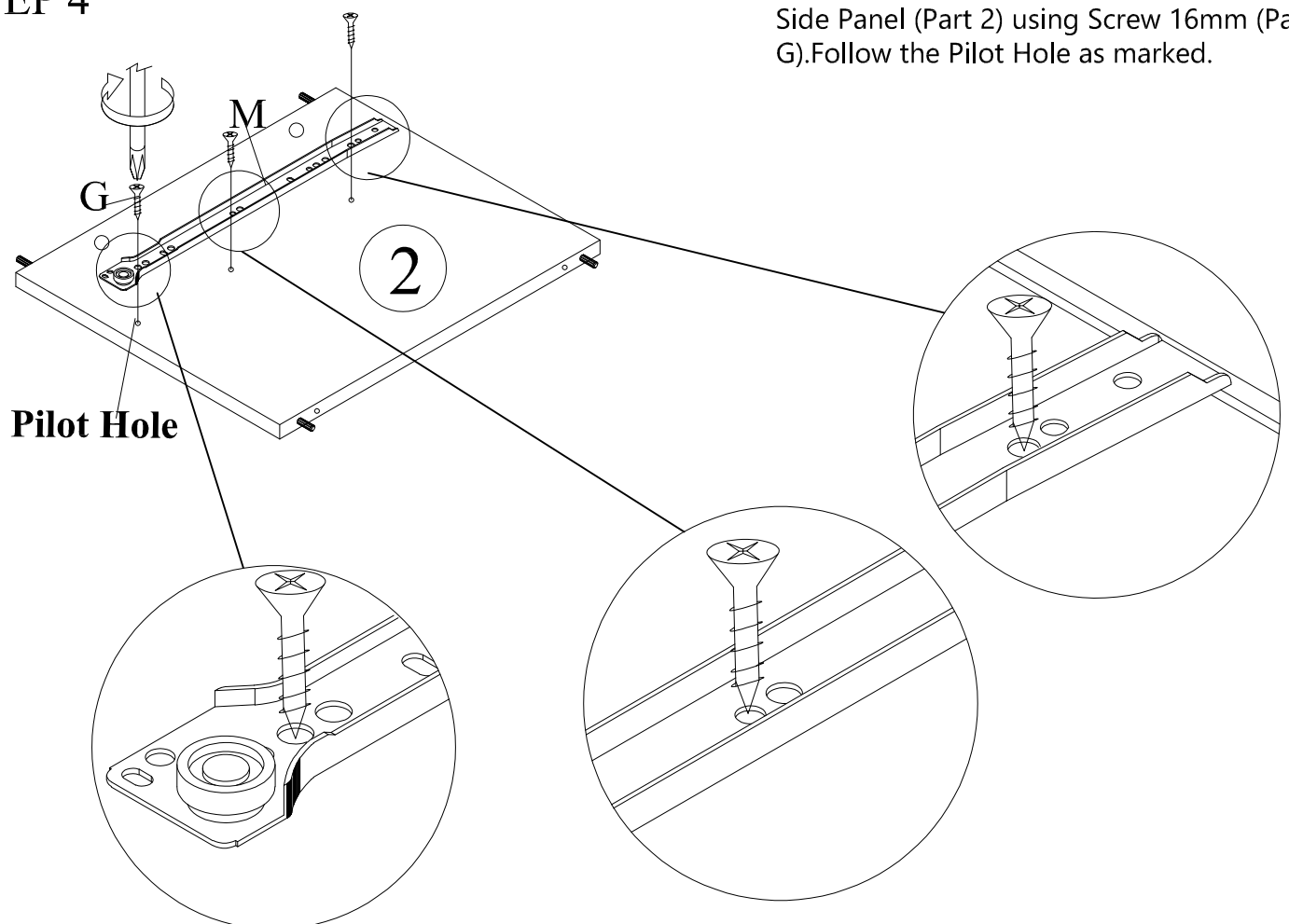
## STEP 3

Insert Minifix House (Part E) into the Left and Right Side Panels (Part 2 and 3) as shown. Ensure the open side of the Minifix House is facing the opening on the left and right side panels.



## STEP 4

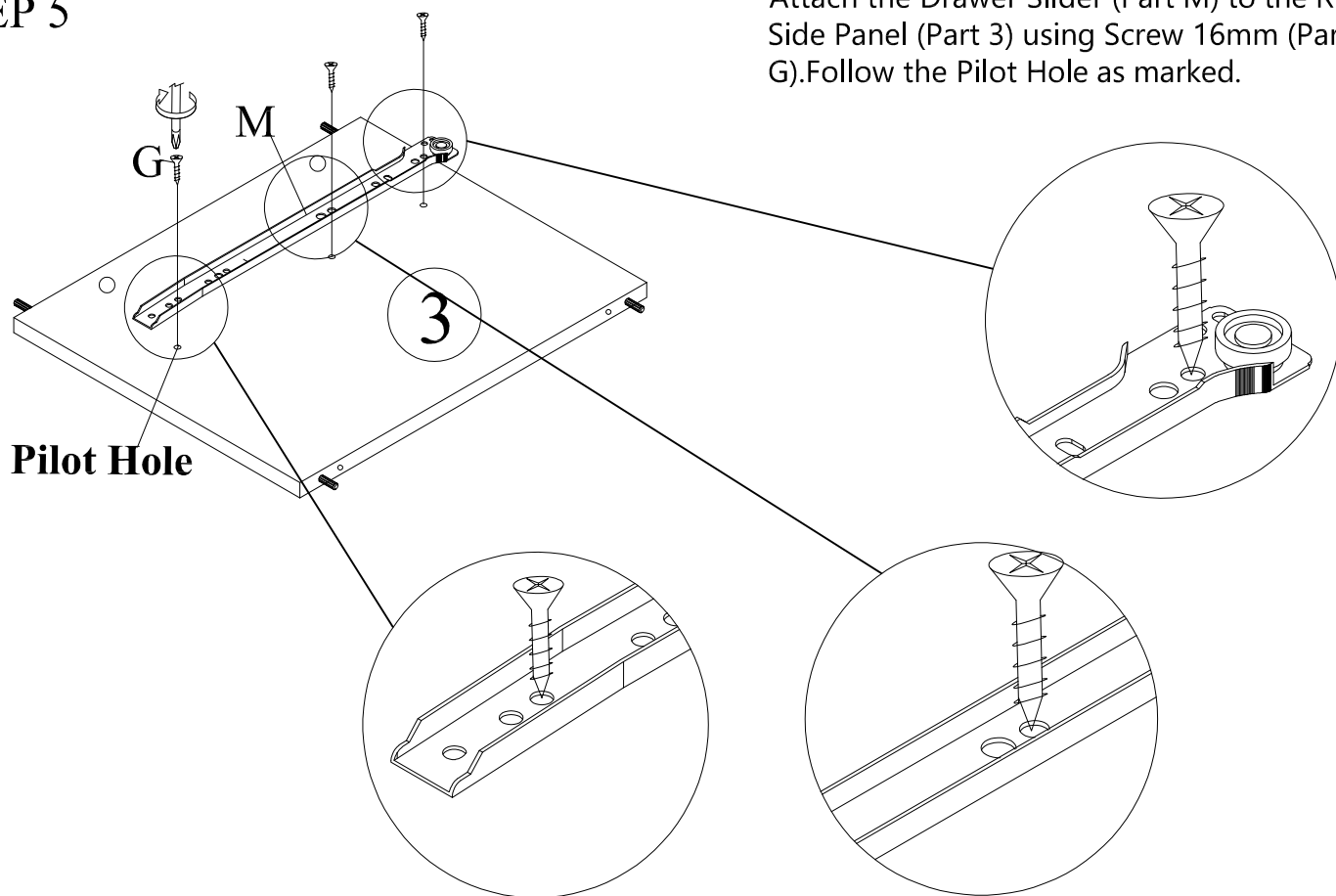
Attach the Drawer Slider (Part M) to the Left Side Panel (Part 2) using Screw 16mm (Part G). Follow the Pilot Hole as marked.



# ASSEMBLY INSTRUCTIONS

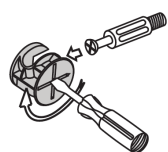
## STEP 5

Attach the Drawer Slider (Part M) to the Right Side Panel (Part 3) using Screw 16mm (Part G). Follow the Pilot Hole as marked.



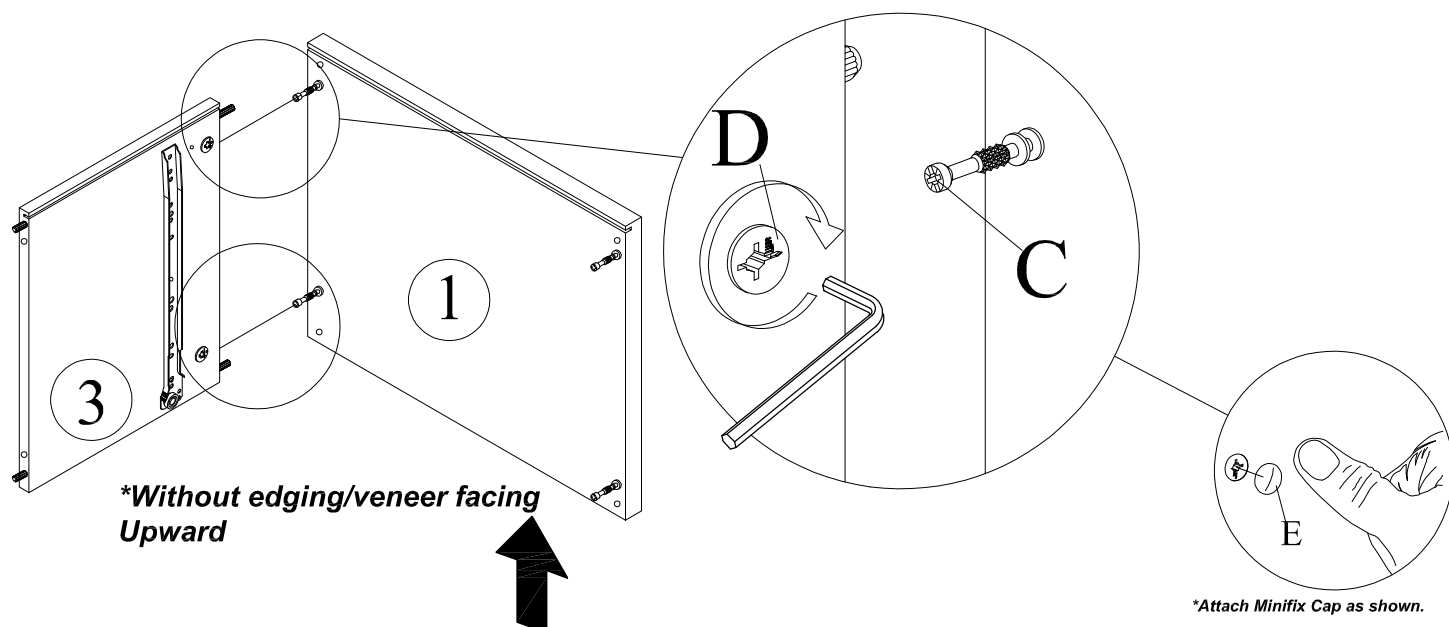
## STEP 6

This is how a mini fix works...



The head of the mini fix housing goes into the open mouth of the mini fix bolt. You then turn the mini fix housing so it tightens over the mini fix bolt.

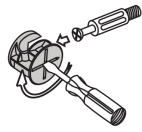
Attach the Top Panel (Part 1) to the Right Side Panel (Part 3) as shown. Turn the Minifix House (D) to tighten using the Allen Key or screwdriver. Cover the Minifix House using the Minifix Cap (Part E) by pressing it into the Minifix House.



# ASSEMBLY INSTRUCTIONS

## STEP 7

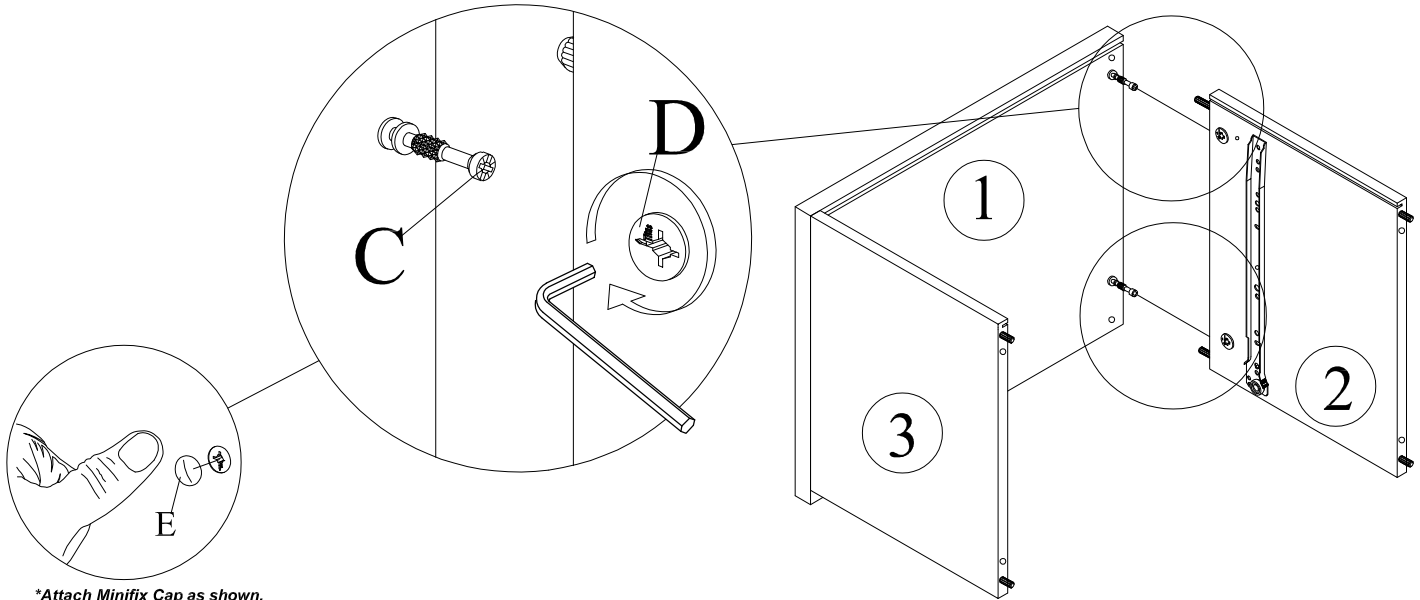
This is how a mini fix works...



The head of the mini fix housing goes into the open mouth of the mini fix bolt. You then turn the mini fix housing so it tightens over the mini fix bolt.

Attach the Top Panel (Part 1) to the Left Side Panel (Part 2) as shown. Turn the Minifix House (Part D) to tighten using the Allen Key or screwdriver.

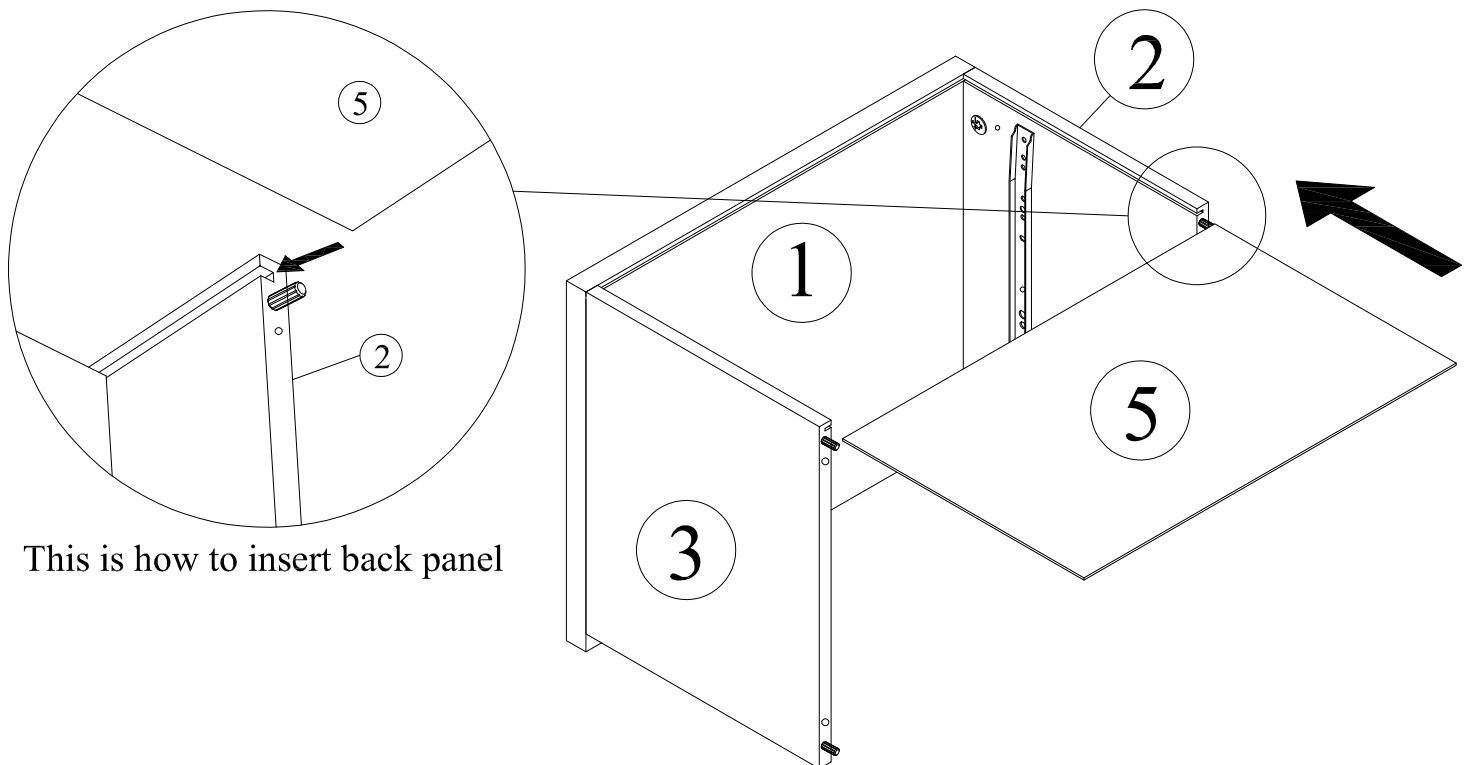
Cover the Minifix House using the Minifix Cap (Part E) by pressing it into the Minifix House.



\*Attach Minifix Cap as shown.

## STEP 8

Insert the Back Panel (Part 5) into the back of the nightstand by sliding the Back panel into the slots provided.

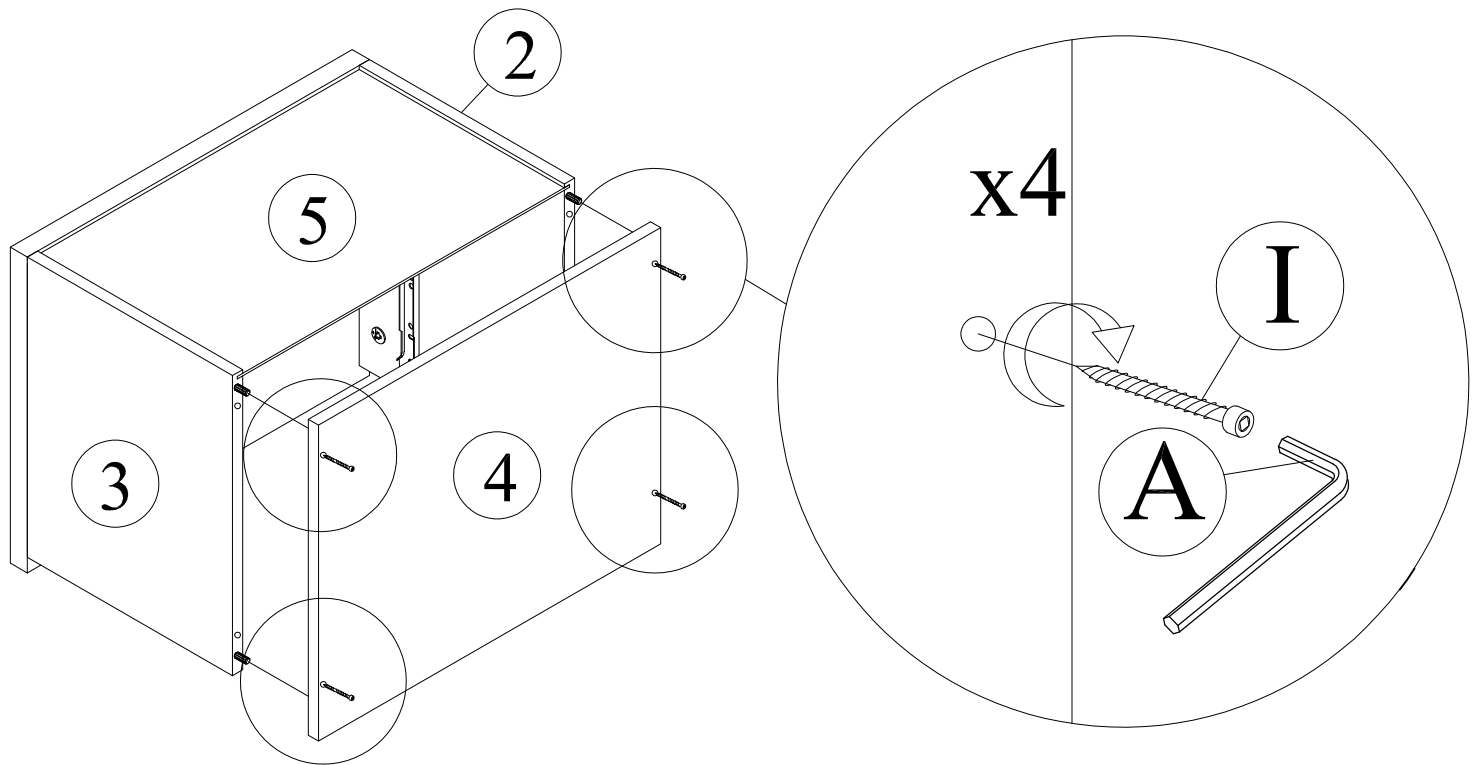


This is how to insert back panel

# ASSEMBLY INSTRUCTIONS

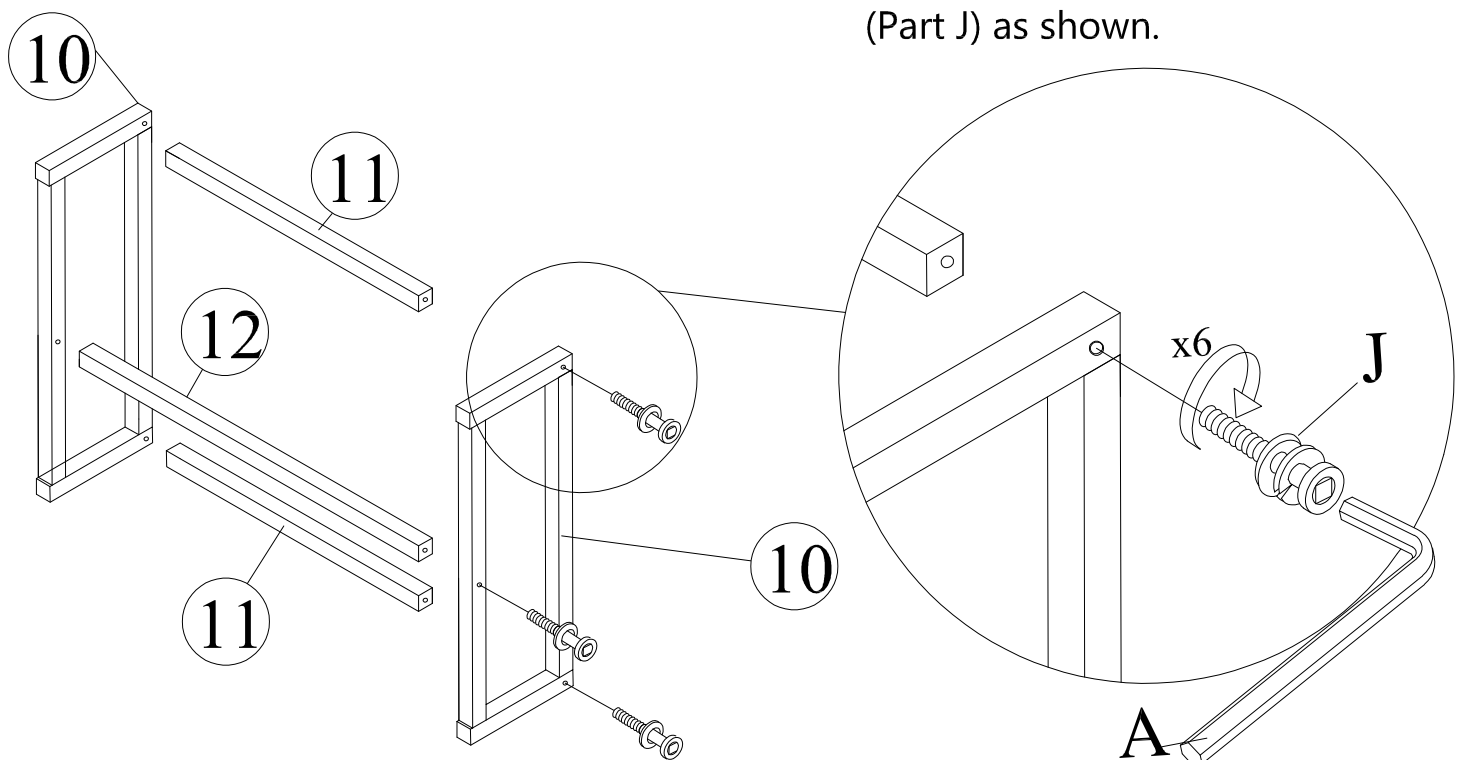
## STEP 9

Attached the Bottom Panel (Part 4) to the bottom of the Nightstand using 4 JCBC W 40mm screws (Part I). Tighten using Allen Key (A).



## STEP 10

Attach the Metal Frame Legs (Part 10) to Metal Support Legs (Part 11 and 12) by using the JCBC 50mm (Part J) as shown.

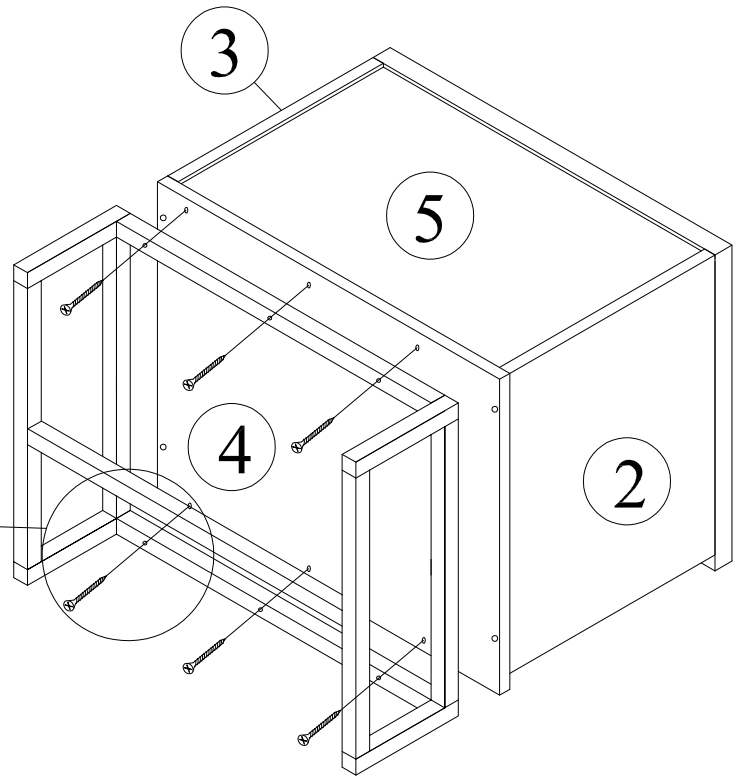
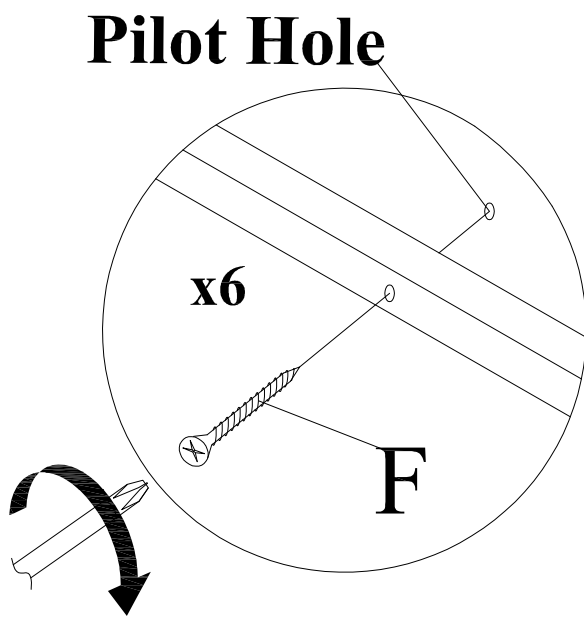




# ASSEMBLY INSTRUCTIONS

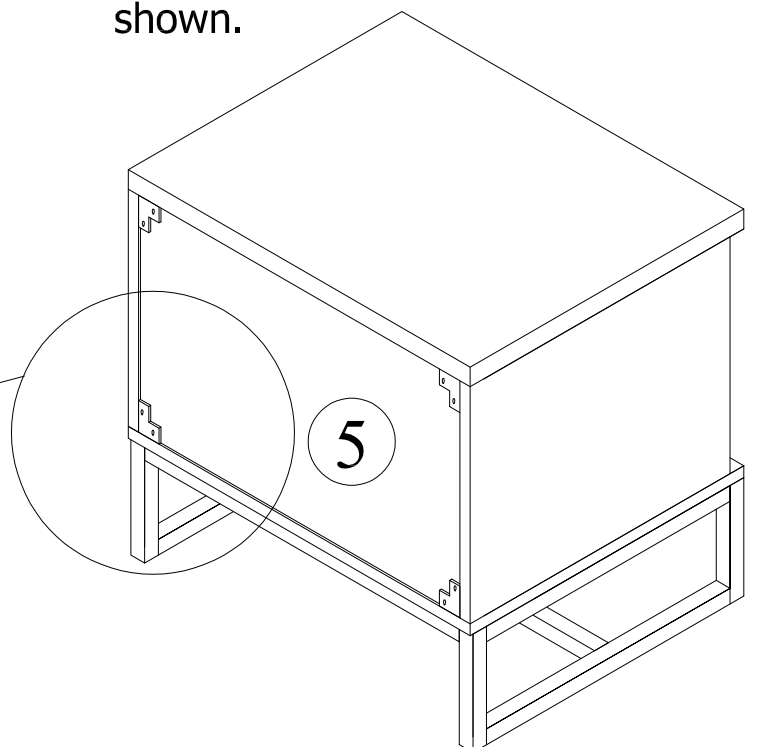
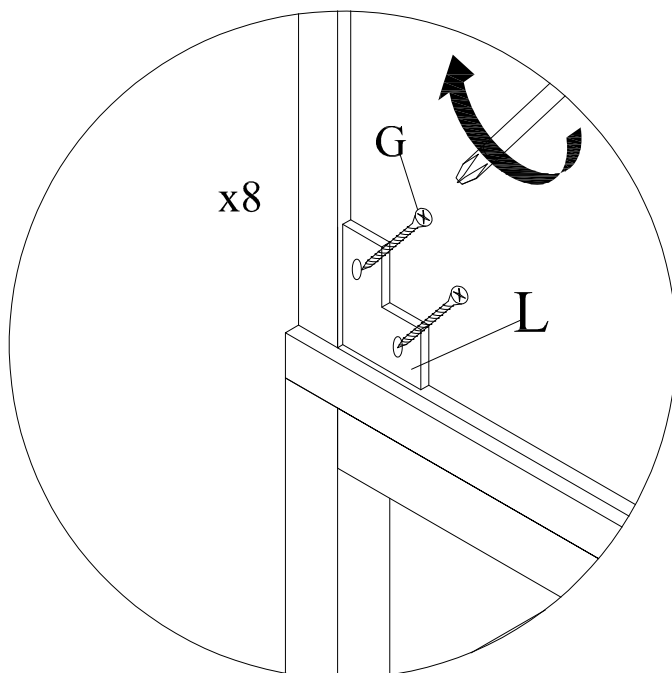
## STEP 11

Attach the metal frame to the the bottom panel using Screw 32mm (Part F).



## STEP 12

Attach L Bracket (Part L) to each corner of the Back Panel (Part 5) using Screw 16mm (Part G) as shown.

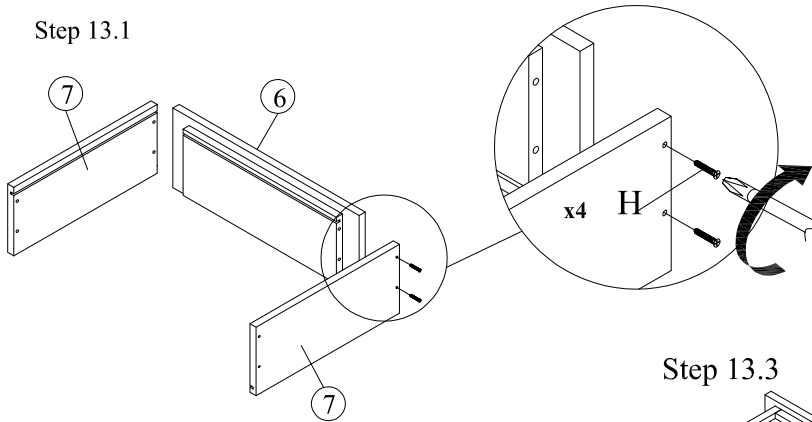


# ASSEMBLY INSTRUCTIONS

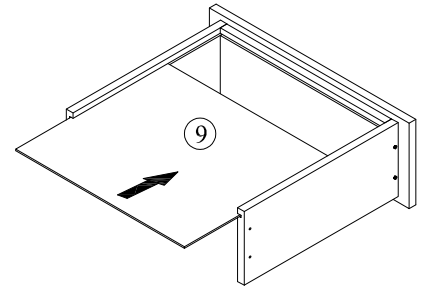
## STEP 13

Attach the Drawer Side Panels (Part 7) to the Drawer Front Panel (Part 6) using Screw 50mm (part H). Insert the Drawer Bottom Panel (Part 9) as shown. Attach the Drawer Back Panel (Part 8) by using Screw 50mm (Part H) as shown.

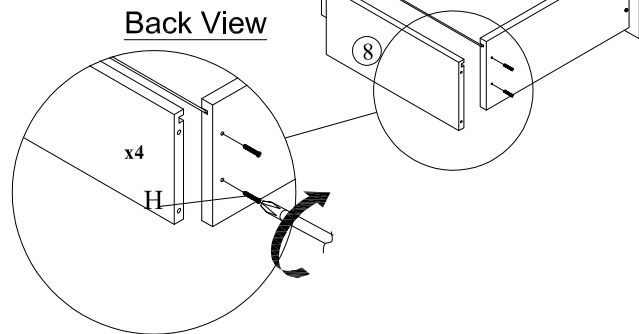
Step 13.1



Step 13.2

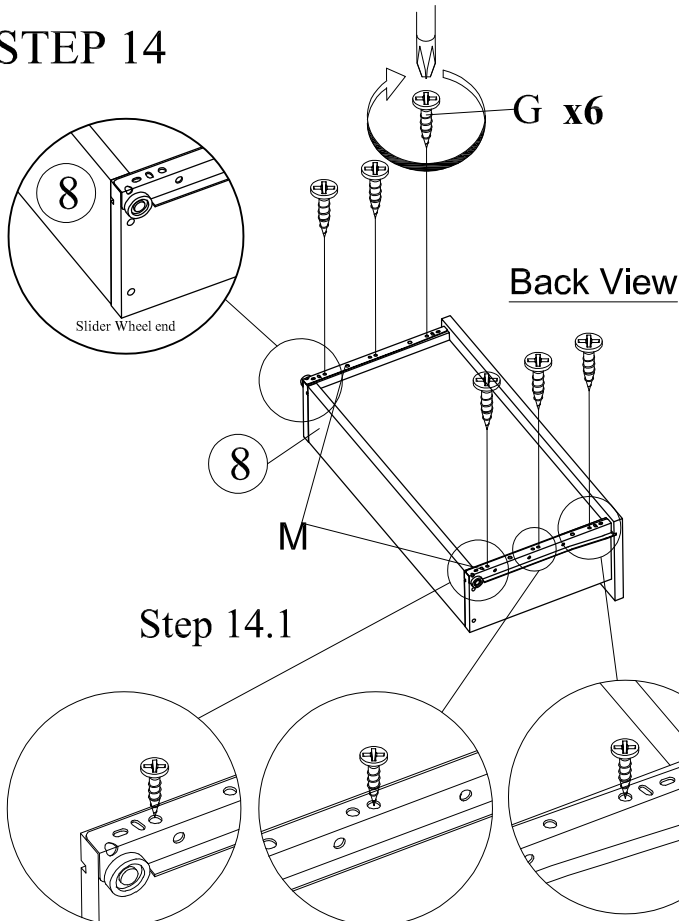


Step 13.3



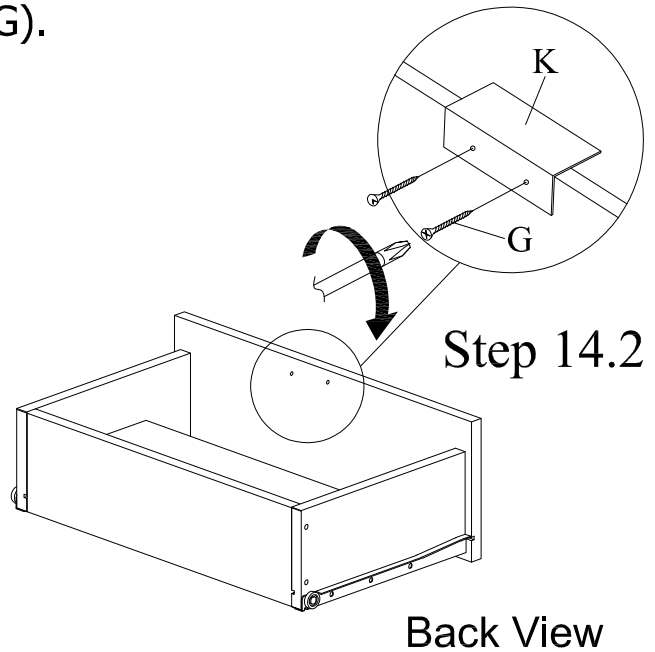
## STEP 14

Attach the slider (Part M) to the bottom of the drawer sides using Screw 16mm (Part G) as shown. Attach the Handle (Part K) to the drawer front using Screw 16mm (Part G).



Step 14.1

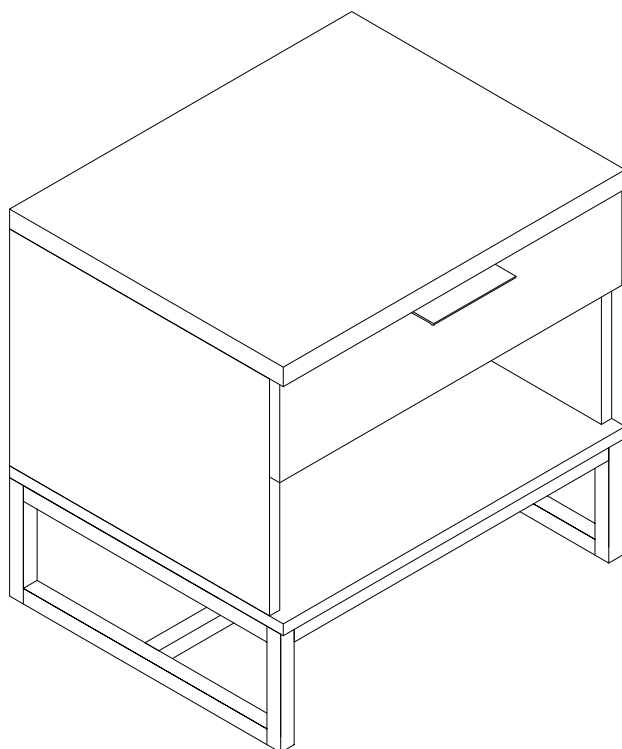
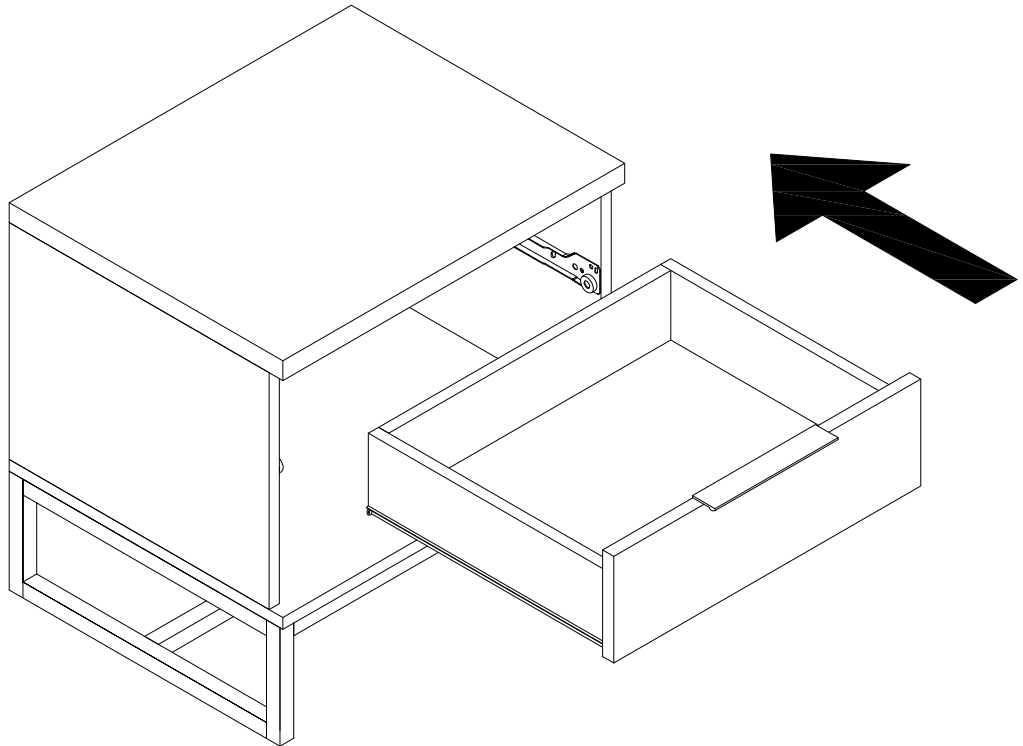
Step 14.2



# ASSEMBLY INSTRUCTIONS

STEP 15

Insert the drawer into the nightstand



# ASSEMBLY INSTRUCTIONS

YOUR NIGHTSTAND IS NOW READY FOR USE

