



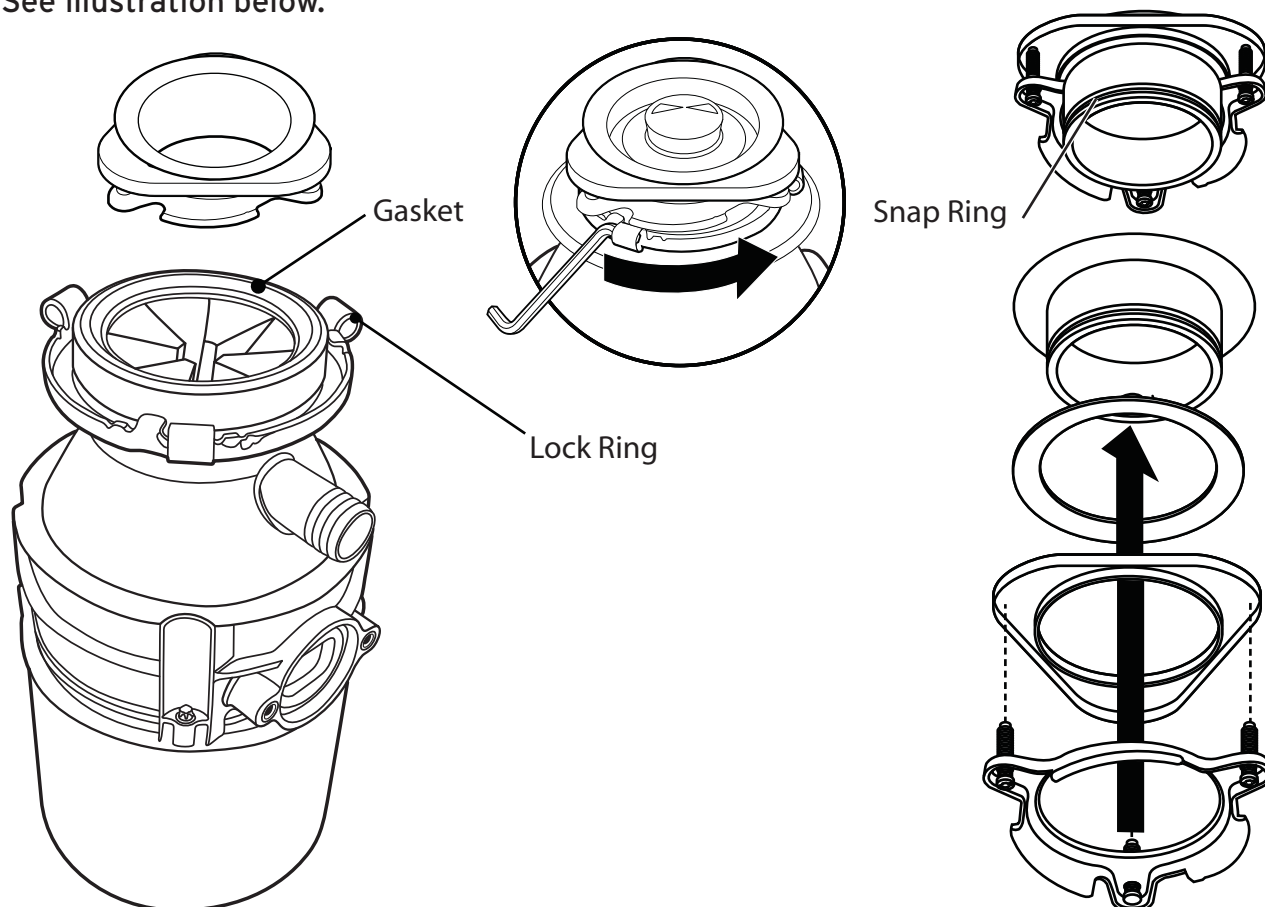
BADGER® Model Disposers: Display Repair Quick-Lock® Sink Mount Installation Instructions

You have received a complete kit to replace or repair two BADGER® model disposer display sink mounts.

Install the sink mount to the disposer in this sequence:

1. Place the lock ring over the neck of the disposer.
2. Fit the gasket over the upper lip of the disposer grind chamber.
3. Position the sink mount assembly onto the disposer, making sure that it fits snugly over the gasket.
4. While holding the sink mount assembly in place, lift the lock ring up to engage the 3 tabs on the lower edge of the sink mount.
5. Final step is to twist the lock ring tightly until it slides past a notch that keeps it firmly in place. You will need adjustable pliers for the final step.

See illustration below.



1.800.558.5700
www.insinkerator.com

H846-16B-64-02

Printed in USA



The Emerson logo is a trademark and a service mark of Emerson Electric Co.
The mounting collar configuration is a trademark of Emerson Electric Co. Quick Lock® is a registered trademark of Emerson Electric Co.
InSinkErator may make improvements and/or changes in the specifications at any time, in its sole discretion, without notice or obligation and further reserves the right to change or discontinue models.
©2016 InSinkErator, InSinkErator® is a business unit of Emerson Electric Co. All Rights Reserved.