

PIPE SUPPORT PRODUCTS

Oatey offers a complete range of pipe support products for all of your application needs. Whether it be securing supply lines, DWV pipe or supporting your work with brackets and bars, **you can count on us for quality, performance & innovation.**



Copper Plated Milford Hangers

- Hang copper tube piping from joists
- Top set plate swivels and locks into place



Full Clamp Pipe Clamps with Nails (Fits ½" to 1" CTS Sizes)

- With pre-loaded nail feature, clamp completely encompasses the pipe
- Made of high impact polypropylene
- Temperature range 0°F to 160°F



Half Clamp with Nail (Fits ½" to 1" CTS Sizes)

- Pre-loaded nail feature provides fast and easy installation
- Made of high impact polypropylene
- Temperature range 0°F to 160°F



Copper & Steel Pipe Hooks

- Self nailing, supports pipe from rafters or joists



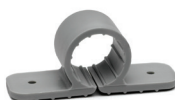
CTS J-Hook

- Support copper and CPVC water supply lines from joists and rafters
- Nails flush against a wall or stud



Hycro Bar

- Multi-purpose galvanized strap
- 14 gauge in various lengths



Standard Clamps (Fits ½" to 1½" CTS Sizes)

- Design allows pipe to be flush mounted to walls and joists
- Made of high impact polypropylene
- Temperature range 0°F to 160°F



Insulator & Suspension Clamps (Fits ½" to 1½" CTS Sizes)

- Eliminates contact between the pipe & framing surface, reducing water line noise
- Made of high impact polypropylene
- Temperature range 0°F to 160°F



Copper & Galvanized Tube Straps

- Allows pipe to be flush mounted to walls, joists and rafters



Copper Plated Bell Hangers

- With 13/16" standoff from mounting surface
- Recessed mounting screw has piece point for use on metal studs



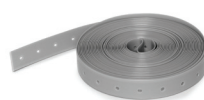
Galvanized Adjustable Bracket

- Supports any water supply lines penetrating the wall
- Holes on 2" centers for ½" pipe and 4" centers for ¾" and 1" copper pipe
- Nail in place and solder pipe to copper plated bracket for secure installation



Steel Riser Clamps

- Compatible with multiple pipe materials
- Versatile design makes it easy to work with



Metal & Plastic Hanger Strap

- Quick and inexpensive way to hang pipe from joists or rafters
- Plastic nail holes are 1/8" in diameter and spaced ¾" apart
- Metal available in 24 & 28 gauge steel



PEX Insulator Support Bracket (Fits ½" to 1" Sizes)

- Reduces noise and vibration when running water lines through metal studs
- Uses 1" to 11/32" hole diameter with tabs for easy adjustment



Stud Guards & FHA Plates

- Provide protection for pipes & wiring installations
- Made of 16 or 18 gauge steel



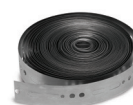
Galvanized & Plastic Coated DWV Hangers

- Holds DWV pipe securely and off the mounting surface
- Versatile design makes it easy to work with



DWV J-Hook

- With pre-loaded nails in stem
- Diagonal nail path for use in tight applications and locking finger for tight hold in inverted applications
- Additional holes allow securing cable ties and other fasteners



Tab Tape

- Self fastening hanger strap
- No nuts or bolts required



DuoFit[®] pipe support system

- One clamp fits both ½" and ¾" size pipe
- Use on copper, CPVC and PEX
- Temperature range of 0°F to 230°F



Copper & Galvanized Split Ring Tubing Hangers

- Secures DWV pipes to wooden rafters, walls or joists
- Enables the expansion and contraction of multiple pipes



Universal Pipe Hangers (Fits 1" to 6")

- Compatible with multiple pipe materials
- Easy to install



Steel Clevis Hanger

- Rigorously tested and proven to last in many conditions
- Compatible with multiple pipe materials