



STORE+®

60" x 32" Vikrell® shower, right drain

72420120



Features

- Tongue-and-groove modular design allows for easy installation during any phase of construction
- Includes four rimmed shelves, two bins, two shower hooks, and two soap dishes with towel bar
- Dishwasher-safe shelves and bins snap into place; no tools required
- Holds up to 30 bottles
- Easy-to-clean, durable high-gloss finish
- Shaving ledge/footrest for added comfort
- Innovative Dry-Block™ seal and channeled water containment system form watertight seams

Material

- Compression-molded from our exclusive solid Vikrell® material

Installation

- Alcove
- Caulk-free installation
- Right drain

Recommended Products/Accessories

K-23726 Drain treatment
K-23733 Vikrell® cleaner

Included Components

72332100 60" Vikrell® shower back wall
72181120 60" x 32" Vikrell® shower base, right drain
72425100 32" Vikrell® shower end wall set



Codes/Standards

CSA B45.5/IAPMO Z124
ASTM E162
ASTM E662
HUD, UM Bulletin 73
IAPMO Certification


STERLING® Vikrell® or Acrylic Baths and Shower Bases Ten-Year Limited Warranty

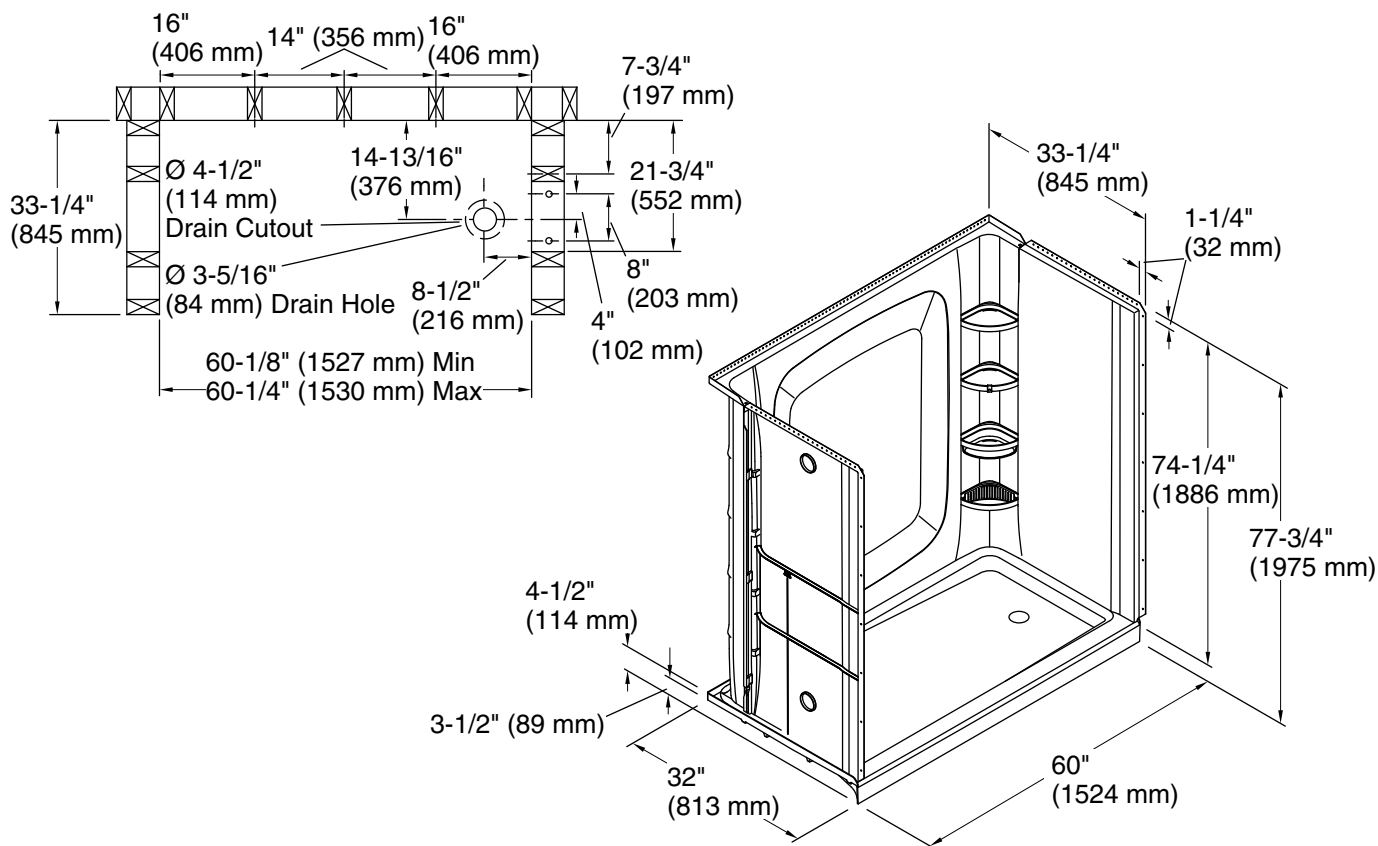
See website for detailed warranty information.

Available Colors/Finishes

Color tiles intended for reference only.

Color	Code	Description
-------	------	-------------

	0	White
---	---	-------



Technical Information

All product dimensions are nominal.

Drain location:	Right
Weight:	125 lbs (56.7 kg)
Minimum flat for door:	2-1/2" (64 mm)
Maximum door height:	73" (1854 mm)
Maximum door width:	56-5/8" (1438 mm)

Notes

Install this product according to the installation instructions.

Studs should be positioned roughly as shown.

Double studding is recommended for pivot shower door installations.