

# INSTALLATION GUIDE FOR ASH31273B



## SAFETY INFORMATION

Please read and understand this entire manual before attempting to assemble, install or operate the product.

### WARNING

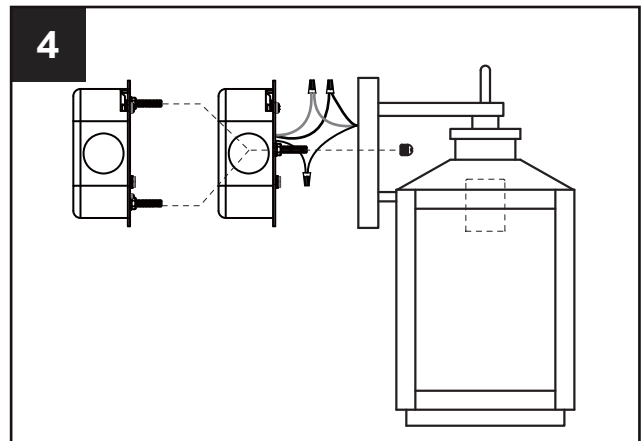
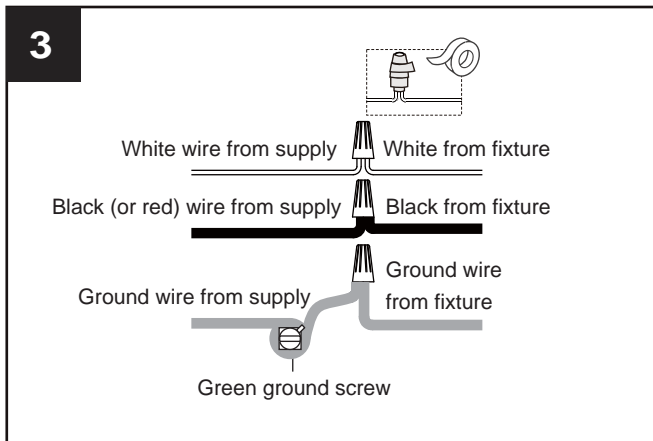
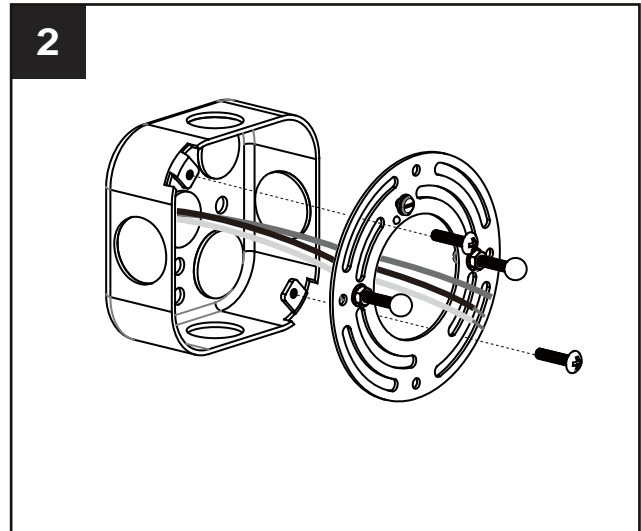
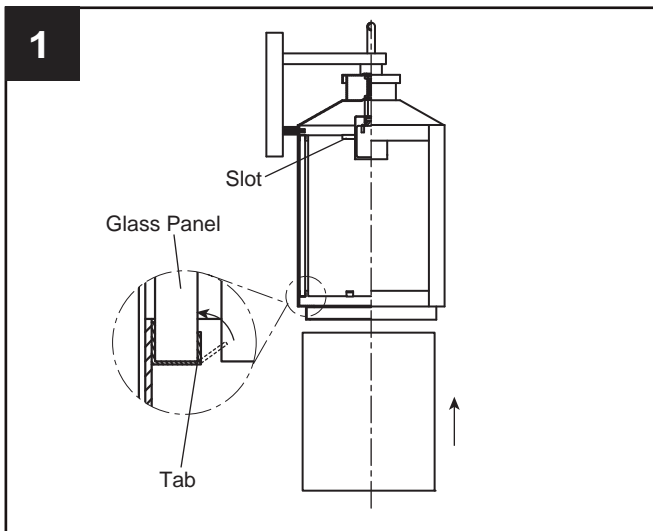
- RISK OF ELECTRIC SHOCK - Before beginning installation, turn off electricity at the circuit breaker box or the main fuse box.
- RISK OF FIRE - Use bulbs specified by the markings and/or labels on the fixture.

### CAUTION

- For your safety, read instructions completely before beginning installation.
- If in doubt about electrical installation, consult a licensed electrician.
- Turn off electricity to fixture before replacing the bulb(s).

## CARE AND MAINTENANCE

- Wipe clean using soft, dry cloth or static duster. Always avoid using harsh chemicals and abrasives to clean fixture as they may damage the finish.



### Install Bulb

Install the correct bulb referring to fixture markings and/or labels for maximum wattage.

Note: Be sure exterior wall surface and fixture backplate are free to dirt to caulking. using exterior grade caulk, start on one side of fixture backplate and follow contour, were the fixture backplate meets the exterior wall surface upward. Proceed to caulk over top of backplate and down other side. **DO NOT CAULK BOTTOM OF FIXTURE BACKPLATE** to ensure proper moisture drainage.

**Your installation is now complete! Restore electricity and save this sheet for future reference.**