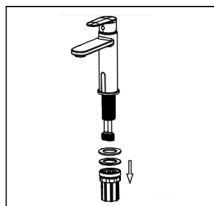
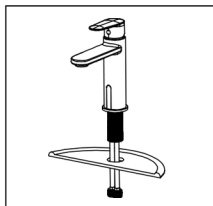


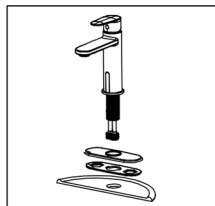
## Sensor Lavatory Faucet



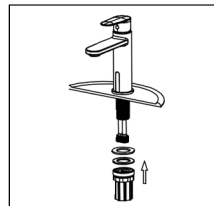
1. Remove the quick nut, metal washer and rubber washer from the faucet shank.



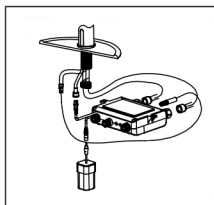
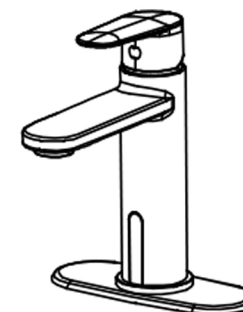
2. For single hole installation insert the hot and cold supply lines and shank through the hole in the countertop.



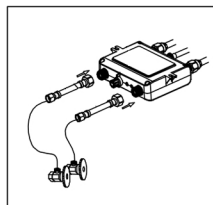
3. For a 3-hole installation insert the base plate panel into the base plate and slide it onto the faucet shank. Insert the hot and cold supply lines and shank through the hole in the



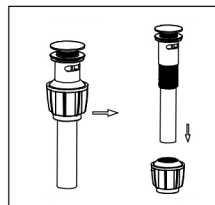
4. Install the rubber washer, metal washer, and quick nut onto the faucet shank in that order underneath the countertop. Tighten down the quick nut ensuring the faucet is in the proper position.



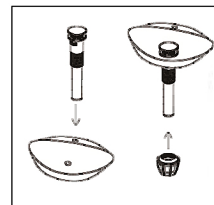
5. Connect the hot and cold supply lines on the faucet to the outlet side of the control box. Connect the interface wire from the faucet to the control box. Connect the battery pack to the red wire port on the control box. Connect the induction wire on the faucet to the control box.



6. Connect one end of the supply lines to the shut off valves, connect the opposite end to the hot and cold inlet side of the control box.

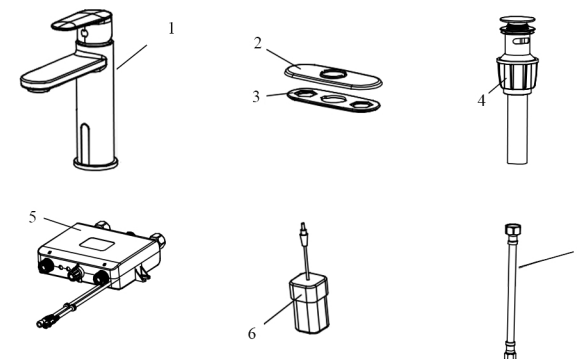


7. Install the push pop-up drain assembly: Turn the big nut clockwise to separate it from the drain body.



8. Apply a thin bead of putty/silicone onto the flange fig.4.1 insert the drain body into the sink slide the nut up and thread it counter clockwise on the drain body underneath the sink until it is firmly attached to the bottom of the flange Do not over tighten the nut.

## Part List



Part #	Part	Quantity
1	Faucet	1
2	Base plate	1
3	Base plate panel	1
4	Pop- up drain assembly	1
5	Control box	1
6	Battery pack	1
7	Flexible supply lines	2