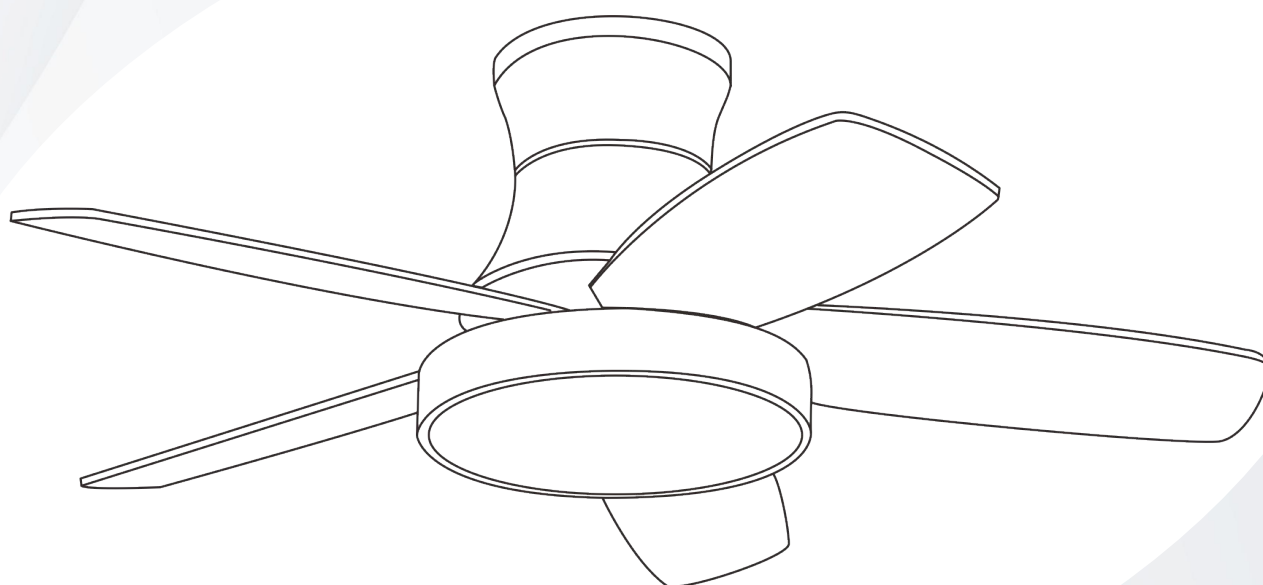


INSTALLATION INSTRUCTIONS



Warning: Turn off the power before installation.

1 SAFETY RULES

1.SAFETY RULES

1. To reduce the risk of electric shock, insure electricity has been turned off at the circuit breaker or fuse box before beginning.
2. All wiring must be in accordance with the National Electrical Code and local electrical codes. Electrical installation should be performed by a qualified licensed electrician.
3. **WARNING:**Suitable for use with solid-state speed controls.
4. **WARNING:** To reduce the risk of personal injury, use only the two steel screws (and lock washers) provided with the outlet box for mounting to the outlet box. Most outlet boxes commonly used for the support of lighting fixtures are not acceptable for fan support and may need to be replaced, consult a qualified electrician if in doubt.
5. The outlet box and support structure must be securely mounted and capable of reliably supporting a minimum of 50 pounds. Use only CUL Listed outlet boxes marked "FOR FAN SUPPORT".
6. The fan must be mounted with a minimum of 7 feet clearance from the trailing edge of the blades to the floor.
7. Do not operate reversing switch while fan blades are in motion. Fan must be turned off and blades stopped before reversing blade direction.
8. Avoid placing objects in the path of the blades.
9. To avoid personal injury or damage to the fan and other items, be cautious when working around or cleaning the fan.
10. Do not use water or detergents when cleaning the fan or fan blades. A dry dust cloth or lightly dampened cloth will be suitable for most cleaning.
11. After marking electrical connections, spliced conductors should be turned upward and pushed carefully up into outlet box. The wires should be spread apart with the grounded conductor and the equipment-grounding conductor on one side of the outlet box.
12. Electrical diagrams are reference only. Light kits that are not packed with the fan must be CUL Listed and marked suitable for use with the model fan you are installing. Switches must be CUL General Use Switches. Refer to the Instructions packaged with the light kits and switches for proper assembly.

WARNING

TO REDUCE THE RISK OF FIRE, ELECTRIC SHOCK OR PERSONAL INJURY, MOUNT FAN TO OUTLET BOX MARKED "ACCEPTABLE FOR FAN SUPPORT".

WARNING

TO REDUCE THE RISK OF PERSONAL INJURY, DO NOT BEND THE BLADE BRACKETS (ALSO REFERRED TO AS FLANGES) DURING ASSEMBLY OR AFTER INSTALLATION. DO NOT INSERT OBJECTS IN THE PATH OF THE BLADES.

2 TOOLS AND MATERIALS REQUIRED

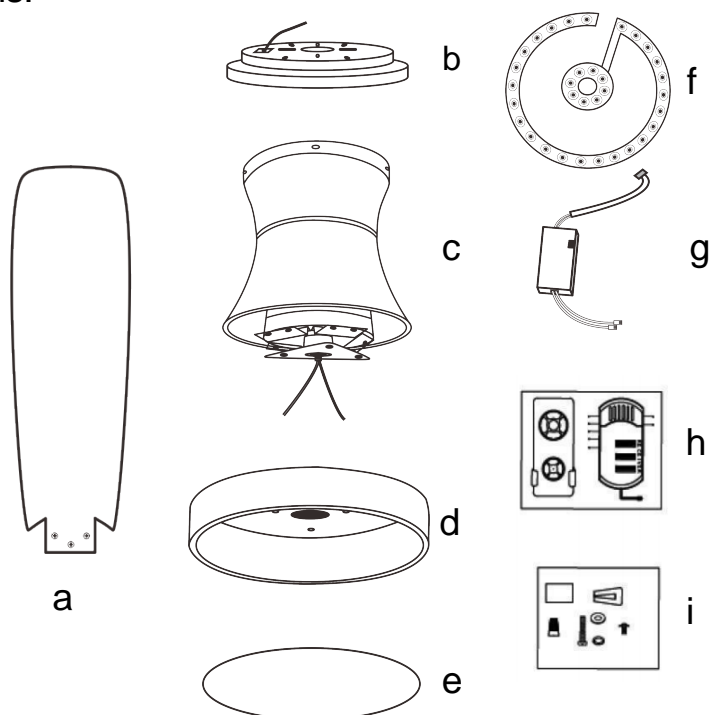
Philips screw driver
Blade screw driver
11 mm wrench
Step ladder
Wire cutters



3 PACKAGE CONTENTS

Unpack your fan and check the contents.
You should have the following items:

- a. Fan blades(5)
- b. Suspension cradle
- c. Fan motor and fan body
- d. Lamp chassis
- e. Light cover
- f. LED light source
- g. Light source drive
- h. Remote control set
- i. Balance kit & Accessories bag

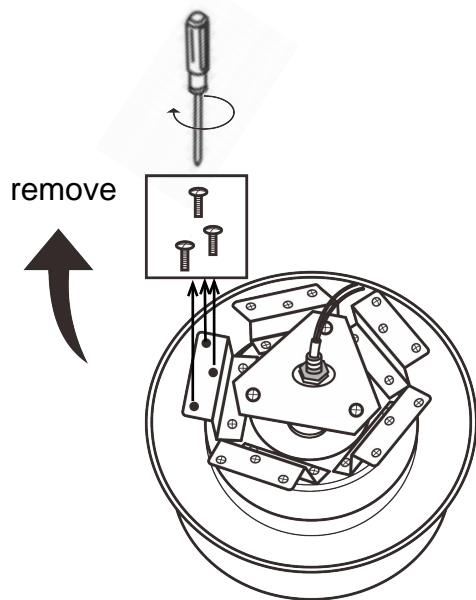


4) INSTALL FAN BLADES

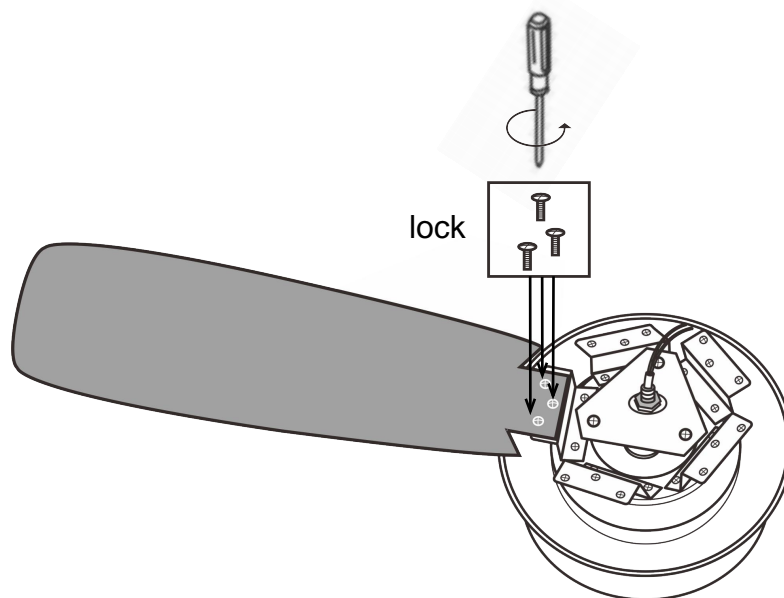
Step 1. Remove the pre-assembled screws from the fan blade holder.

Step 2. Insert the newly removed blade screw through the blade hole and place it over the motor. Align the holes and lock them.

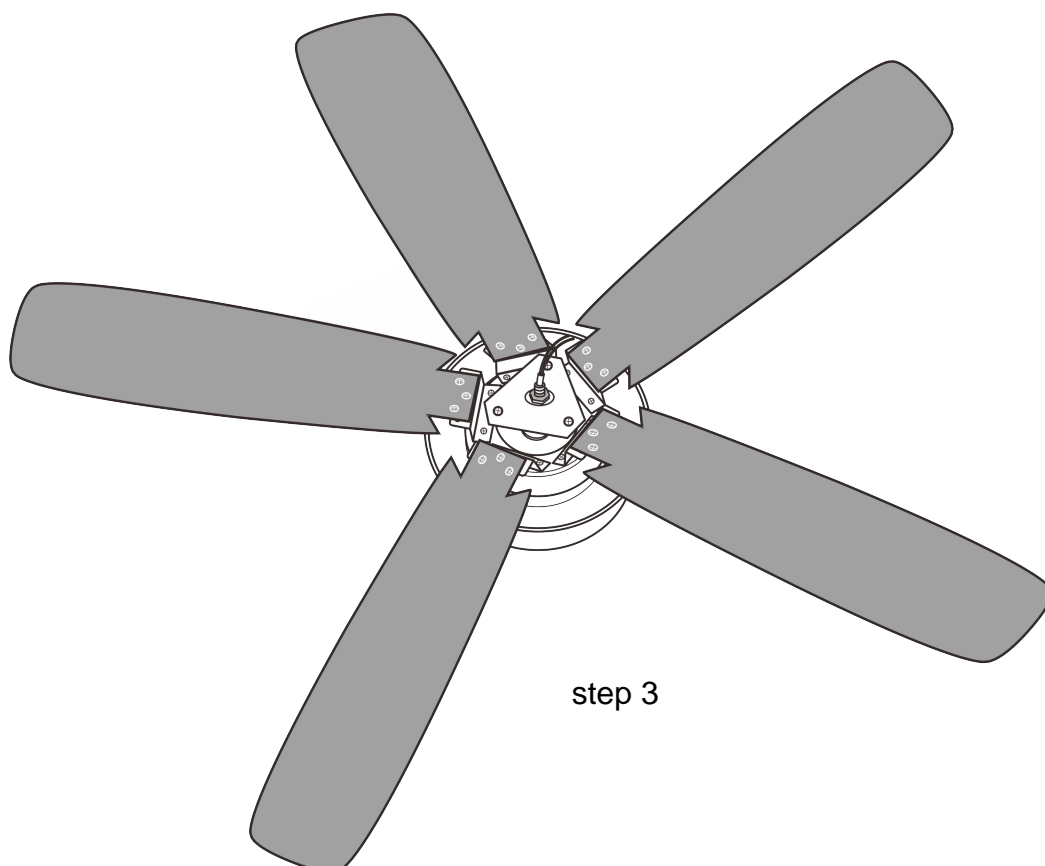
Step 3. Repeat the above steps until 5 fan blades are punched.



step 1



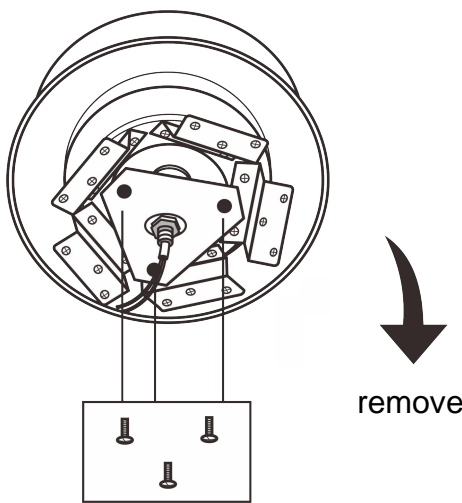
step 2



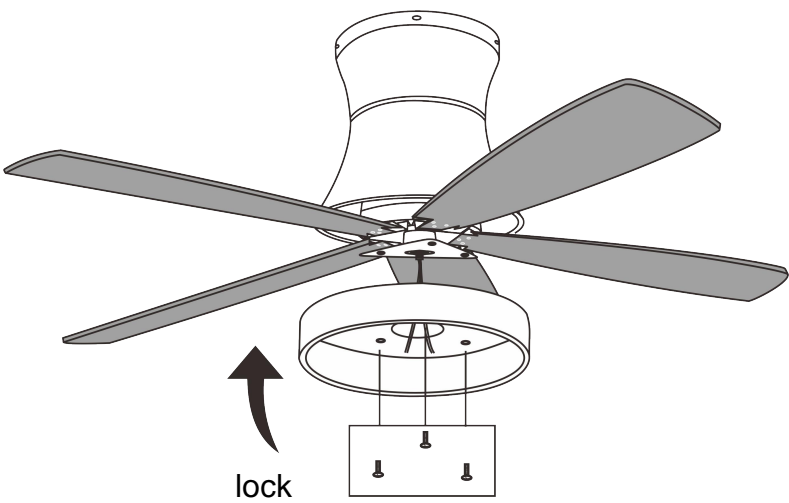
step 3

5) INSTALL LED LIGHT KIT AND LAMP SHADE

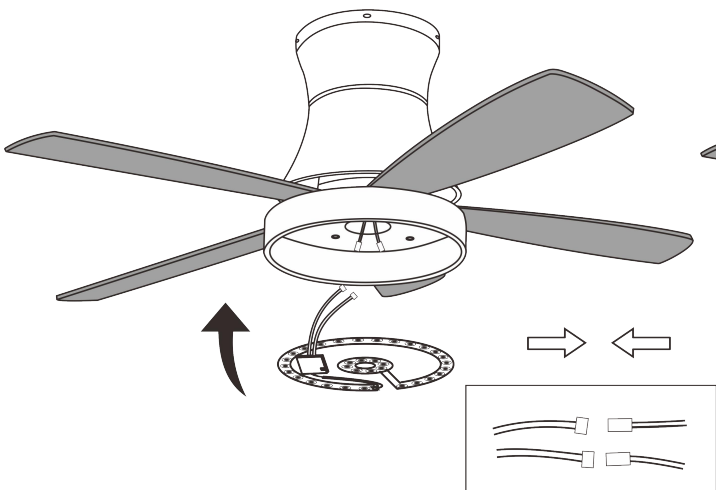
Step 1. Remove the pre-assembled screws from the base plate.



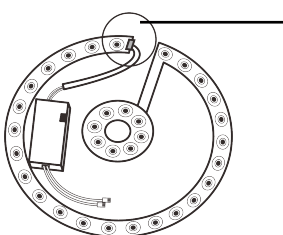
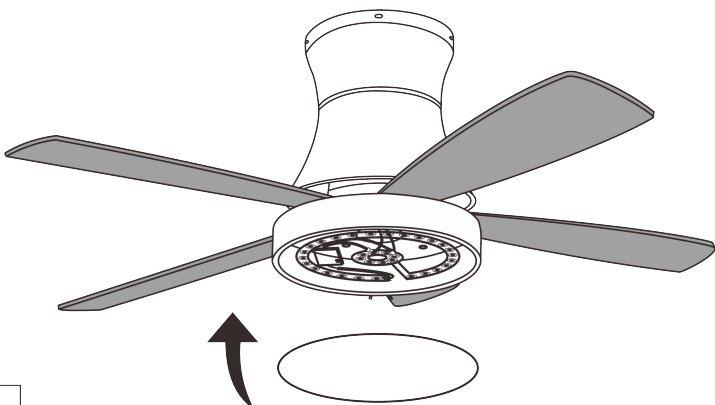
Step 2. Install the light plate onto the fan motor assembly by the 3 x screws that were removed in Step 1.



Step 3. Connecting the wire plug from LED light source to the wire plug from fan motor assembly. And then install the LED light source directly onto the light plate by the magnetic suction-cup bolt.



Step 4. Install the light cover to the light pan Please make sure the light cover is locked in place.



Connection of light source drive and LED light source.

6) HANGING THE FAN

REMEMBER to turn off the power. Follow the steps below to hang your fan properly.

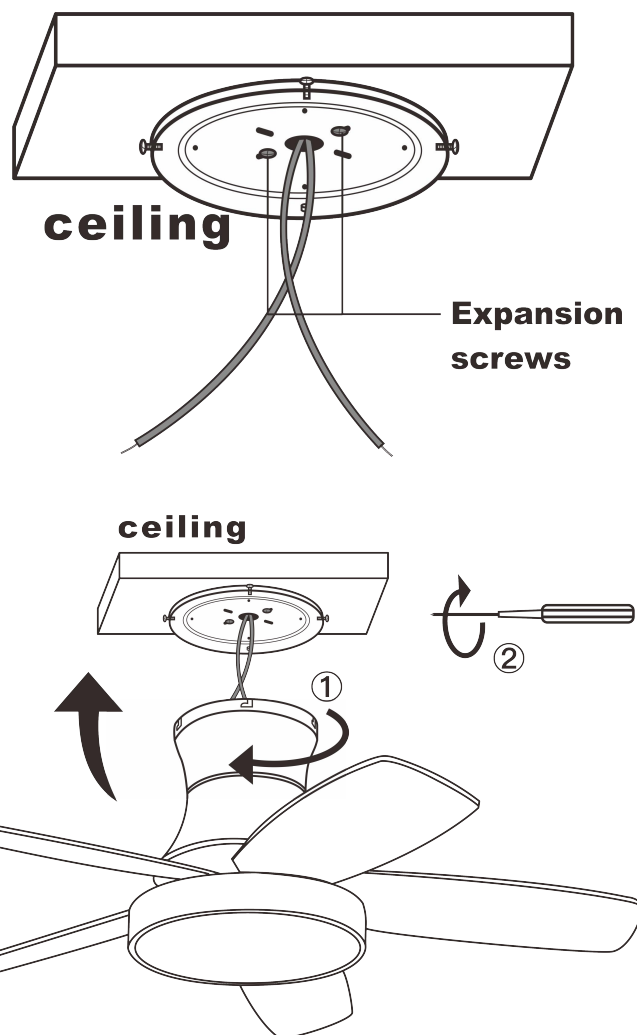
STANDARD CEILING INSTALLATION

Step 1. Take out the ceiling cover from the package and use expansion screws to fix the ceiling cover of the fan to the ceiling outlet box. Pass the 220 volt power cord through the center hole of the ceiling fan ceiling cover.

Step 2. Please follow the steps below (7. **Connection BETWEEN MOTOR AND RECEIVER**) to complete. Then move the fan lamp body onto the ceiling cover. Rotate the entire assembly until the "Check Tab" has dropped into the "Registration Slot" and is seated firmly. The entire motor assembly should not wobble (left or right) when seated properly.

Step 3. Using a Phillips screwdriver, lock all screws on the ceiling cover.

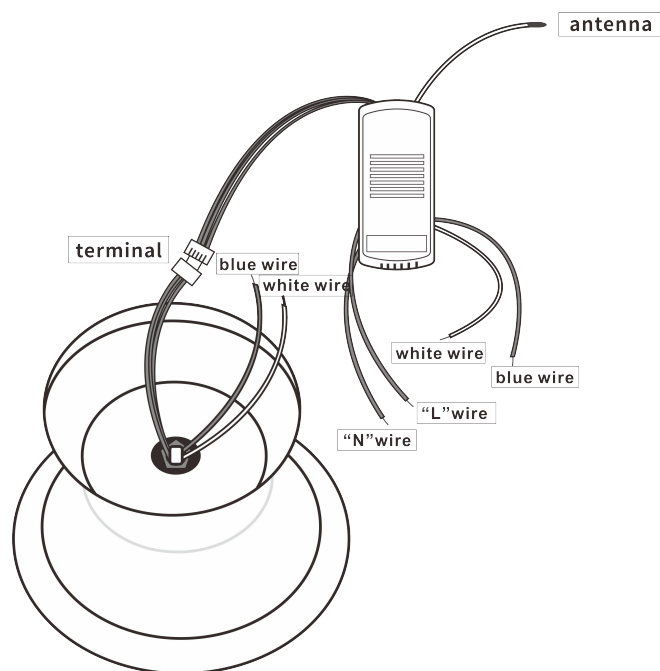
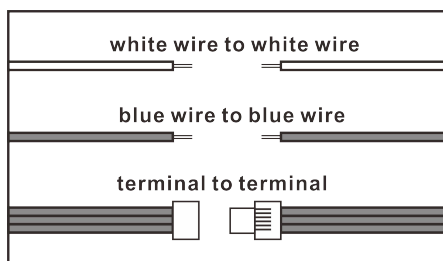
WARNING: Please ensure that the fan is firmly installed on the ceiling and clamped tightly.



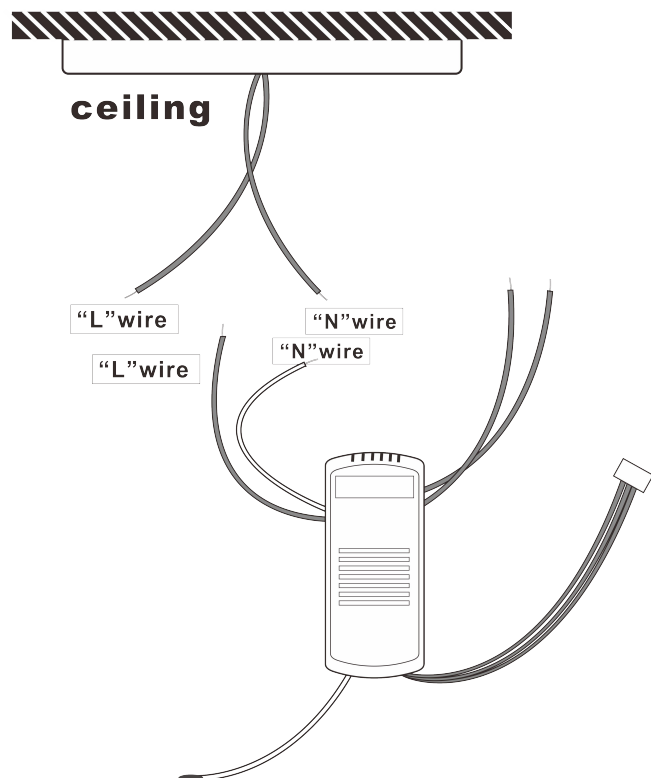
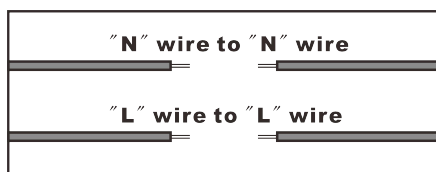
7) MOTOR AND RECEIVER CONNECTION

WARNING: To avoid possible electric shock, please ensure that the power to the main circuit panel is turned off. Follow the steps below to connect the motor line of the fan lamp to the line of the controller

STEP 1. Motor to Receiver Electrical Connections: Connect the colorful wires (3) from receiver with the colorful lead wires (3) from fan motor, follow the corresponding rules as below: terminal to terminal, blue to blue, white to white. Secure each set of wire connections with the wire nuts provided in the parts package.



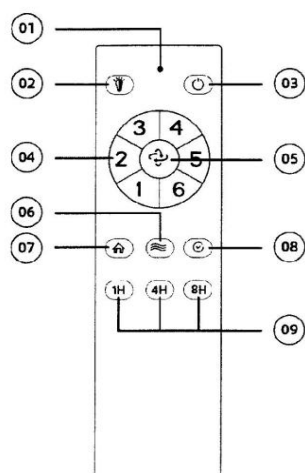
STEP 2. Connect the N wire on the receiver to the N wire of the outlet box; The L wire on the receiver is connected to the L wire of the outlet box. Secure each set of electrical connections with the plastic wire nuts provided in the parts bag.



STEP 3. After completing all connections, place the wiring and receiver into the fan body.

NOTE: Fan must be installed at a maximum distance of 30 feet from the Hand-held Remote Transmitter for optimal signal transmission between the transmitter and the fan's receiving unit.

8 OPERATION FOR REMOTE



- 01 LED indicated light
- 02 ON/OFF the light — **The first click is 6000K, the second click is 3000K, and the third click is 4500K. Press again to turn off**
- 03 OFF the fan
- 04 The direction of the fan(Reverse switch)
- 05 Direction of the fan (Reverse switch)
- 06 Natural wind
- 07 Simulate a human burglar lamp
- 08 Delay closing of the fan
- 09 Timing control of the fan

Color temperature adjustment

This LED Light Source has three color temperatures:3000K,4000K,6000K.

Pressing the LIGHT button on the remote control turns the light on at its default color temperature. To change the color temperature,use the LIGHT button to turn off the LED light panel and then press it again within 5 seconds to turn the light back on at a new color temperature.

Leave the light on for more than 5 seconds before turning it off. The current color temperature will be stored as the new default setting.

NOTE:

Please connect relevant components strictly following instructions on the label. Otherwise switch life will be influenced directly and the switch will fail to function.

1. The fan switch must be on status,and our product can control fan.

2. When the emitter can not control the receiver,please check whether battety touch is normal, the placed of anode and cathode is correct and power is enough.

3 Please use product in allowable voltage,it is not normal if the voltage is toolow.(Please check the labelfor voltage range and correlative technique parameter.)

4. When the emitter can not control the teceiver,please check if there are similar remote control products existingin the nearby range,and check whether theirlauncher buttons are pressed,because remote control products withthe same properties launching electric wave at the same time,will cause mutual interference

and influence the receiving effect;and that will be normal again after the remote control function is eliminated.(Exclude the remote control)

5. Please take out the batteries when not use in a long time.

6. Requirements for eachload:bulb 72W;fan 120W.

9 TROUBLESHOOTING

Problem	Solution
Fan will not start.	<ol style="list-style-type: none"> 1. Check circuit fuses or breakers 2. Check all electrical connections to insure proper contact. CAUTION: Make sure the main power is OFF when checking any electrical connection.
Fan sounds noisy.	<ol style="list-style-type: none"> 1. Make sure all motor housing screws are snug. 2. Make sure the screws that attach the fan blade brackets to the motor are tight. 3. Make sure wire nut connections are not rubbing against each other or the interior wall of the switch housing. <p>CAUTION: Make sure main power is off.</p> <ol style="list-style-type: none"> 4. Allow a 24-hour "breaking-in" period. Most noise associated with a new fan disappear during this time. 5. If using an optional light kit, make sure the screws securing the glassware are tight. Check that the light bulb is also secure. 6. Some fan motors are sensitive to signals from solid-state variable speed controls. If you have installed this type of control, choose and install another type of control. 7. Make sure the upper canopy is a short distance from the ceiling. It should not touch the ceiling.
Fan wobble.	<ol style="list-style-type: none"> 1. Check that all blade and blade arm screws are secure. 2. Most fan wobbling problems are caused when blade levels are unequal. Check this level by selecting a point on the ceiling above the tip of one of the blades. Measure this distance. Rotate the fan until the next blade is positioned for measurement. Repeat for each blade. The distance deviation should be equal within 1/8". 3. Use the enclosed Blade Balancing Kit if the blade wobble is still noticeable. 4. If the blade wobble is still noticeable, interchanging two adjacent (side by side) blades can redistribute the weight and possibly result in smoother operation. <p>WARNING: TO REDUCE THE RISK OF PERSONAL INJURY, DO NOT BEND THE BLADE ARM WHILE INSTALLING, BALANCING THE BLADES, OR CLEANING THE FAN. DO NOT INSERT FOREIGN OBJECTS BETWEEN ROTATING FAN BLADES.</p>
Fan not control.	<p>Programming code marching mode is used between emitter and receiver, Turn "ON" the supply power within 30 seconds and press the emitter's "STOP" button for 5 seconds, after hearing a long sound "BEE", press "1H" button. It can load normally after hearing the "BEE" which means programming successfully and it can works normally. (PS: Programming mode is not accepted after turn "ON" the supply power for 30 seconds)</p>