

HoldRite Sweat x FIP Water Heater Connector

Flexible water heater connectors allow you to work in tight spaces and easily connect water heaters with existing pipes that don't line up. Innovative design reduces the need for extra joints or fittings allowing for faster install time.

Features and Benefits

- Flexibility makes installation easier when pipes do not line up
- Approved for electric and gas water heaters with flue vent.
- Ideal for working in tight spaces.
- Sweat X FIP



Applications

- Potable water



Specification Data

Performance

Maximum working pressure	125 Service/200 Max PSI
Maximum Temperature	190°F

Materials

#QFC-7524SWTZ

1 Corrugated Hose	Stainless Steel
2 Swivel Nuts	Chrome plated brass
3 Gasket	EPDM
4 Fitting	Copper

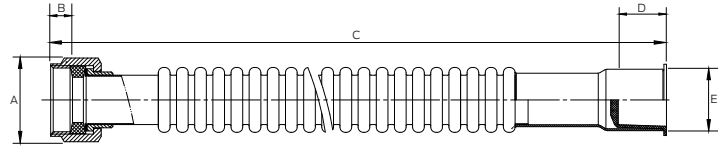
¹ Lead Free for all models, surfaces that are in contact with consumable water contain less than 0.25% lead by weight.

Installation Requirements

The FIP nut seals with a gasket and does not need thread sealant. Thread water heater connector onto threads and tighten with a wrench. Cut copper square and clean copper and inside valve with emery cloth. Coat inside water heater connector fitting and copper with flux. Push fitting on the copper pipe. Heat joint until solder liquefies and feeds solder around edges of the fitting. Wipe connection with a damp cloth to clean and cool joint. Turn on the water and check the connections.

Threaded Connectors

Do not use thread sealant on FIP nut.



QFC-7524SWTZ

Dimensions

Description	Part #	A	B	C	D	E
24-IN CS STEEL 3/4-IN FIP X 3/4-IN SWT	QFC-7524SWTZ	1.14	0.30	24.02	0.63	0.88

Codes and Standards

ASME A112.18.6

CSA B125.6

NSF/ANSI/CAN 61

NSF/ANSI/CAN 372

