

## INSTASTEAM INSTRUCTIONS

INSTASTEAM™



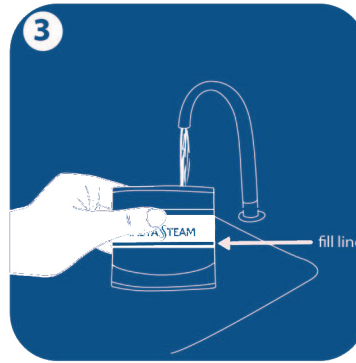
Hang only **ONE** garment in the garment holder.

**Note:** Hanging more than one garment inside the garment holder will prevent the pod from providing proper results.



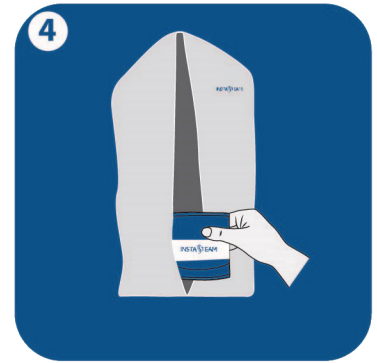
Carefully tear open the Pod.

**Note:** Use **TWO** Pods in the garment holder if steaming a thicker material or extremely wrinkled/creased garment.



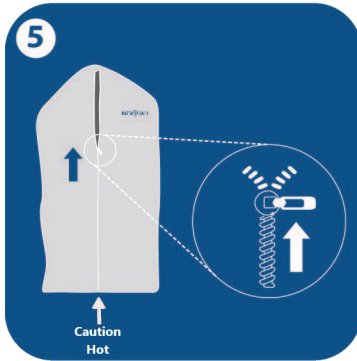
Fill the Pod with water until the water fill line.

**DO NOT ZIP LOCK THE POD AFTER FILLING.** Fill the Pod close to where the garment holder is hung.

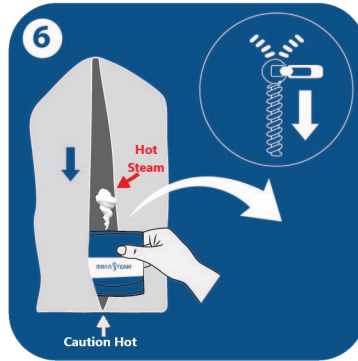


Immediately place the Pod at the bottom of the garment holder near the center.

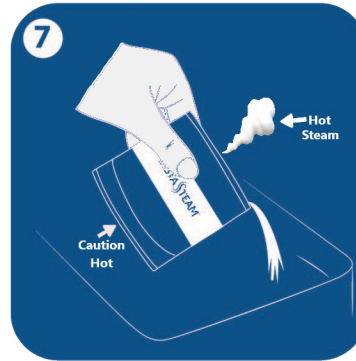
**Note:** Steam begins within about **15-30 seconds** of filling with water. The Pod will not tip over in the garment holder if placed properly.



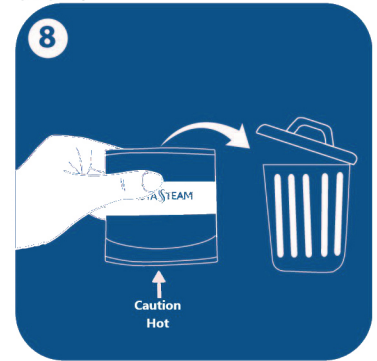
Zip up the garment holder. Wait **at least 3 minutes** for lighter garments and **5+ minutes** for thicker garments.



Carefully unzip the garment holder and take out the Pod by the sides. To switch garments repeat instructions skipping 2 & 3.



When finished, carefully spill out the remaining water in the Pod.



Dispose of InstaSteam Pod in trash. If damp, turn the InstaSteam garment holder inside out to dry.

INSTASTEAM™

## ADDITIONAL INSTRUCTIONS AND WARNINGS

When using hot appliances, basic safety precautions should always be taken to reduce the risk of injury to persons, including the following:

1. **Read all instructions and warnings carefully, before use.**

2. This appliance is not intended for use by persons (including children) with reduced physical, sensory, or mental capabilities, or lack of experience and knowledge, unless they are closely supervised and instructed concerning use of the appliance by a person responsible for their safety.

3. Close supervision is necessary when any appliance is used by or near children under the age of 17. Children should be supervised to ensure that they do not play with or use the appliance.

4. Only use a garment steamer/ InstaSteam for its intended use.

5. It is preferable to hang the Garment Holder close to where you will fill the InstaSteam Pod with water.

6. The InstaSteam Pod must not be left unattended while it is outside of the Garment Holder.

7. The InstaSteam Pod may only be used in the InstaSteam Garment Holder.

8. This device produces heat and steam when in contact with water, use with caution.

9. Contents inside the bag get extremely hot instantly when activated. **DO NOT PUT HAND IN OR OVER THE OPENING OF THE POD.**

10. The Garment Holder must be hung from a secure hook or rod.

11. InstaSteam is not intended to be used with all materials. Certain materials like silk, satin and leather may get ruined by water moisture. Please check tags on your clothing to insure that are suitable to be steamed.

12. Serious burns may result from exposure to hot water or steam while the InstaSteam Pod is activated. Use extreme caution to keep hands away from any openings.

13. **NEVER** turn the InstaSteam Pod upside down. Contents are extremely hot, and skin or eye contact with the minerals may cause an allergic reaction or blindness.

14. All of the water must be poured out of the InstaSteam Pod before disposing of.

15. **NEVER** remove any of the contents inside the InstaSteam Pod before or after use. Minerals may cause allergic reaction to skin. In case of contact with eyes, rinse immediately and seek medical advice.

16. Keep away from any electrical equipment.