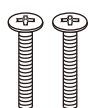
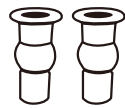


## Installation Parts

1. Metal mounting bolt (2)
2. Rubber anchor (2)
3. T-valve connector with rubber washer
4. Deodorizer cover
5. Carbon deodorizer cartridge
6. Bidet hose
7. Adjustable brackets (2)
8. Mounting plate
9. Remote control
10. Remote control wall mount
11. AAA batteries (3)



①



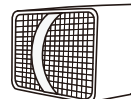
②



③



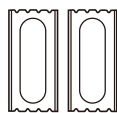
④



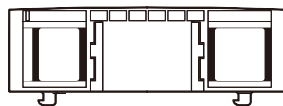
⑤



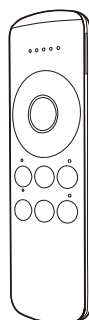
⑥



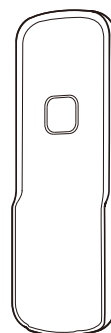
⑦



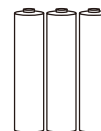
⑧



⑨



⑩



⑪

## PRODUCT INSTALLATION

# Before Installation



Do not plug the product in while the unit is upside down.  
This may cause damage to the internal components.

### Watch our installation video

Installation for all Swash products can be found online at [brondell.com](https://brondell.com)

### Check bolt spread

This bidet seat can only be installed on toilets with a bolt hole spread of 5.3–7.7 in. (see Product Dimensions on page 8 for more information).

### Check for a concealed toilet fill valve

Many modern toilets have sleek designs intended to cover and camouflage plumbing connections, which make a standard Swash installation difficult or impossible. For this, we recommend using our Alternate Swash Bidet Seat T-valve, found on [brondell.com](https://brondell.com).

### Check water supply line

Check the line that connects the toilet tank to the water shut off valve. If it is a rigid pipe, you may need to purchase a flexible hose to replace it before installing the Swash. The length of the hose and the size of the connectors will vary.

### Residual moisture is normal

Every product is tested with pure water during production to ensure the highest quality and performance. It is normal to find a small amount of residual moisture on the product.

### Tools

A Phillips head or standard screwdriver may be needed to remove the existing toilet seat and a standard wrench may be needed for tight water supply connections. Teflon tape can be helpful in creating a water-tight seal between plumbing connections.

# Swash Installation

Please read these instructions carefully before installing the Swash. Failure to do so could result in flooding, leaking, or damage to the product.

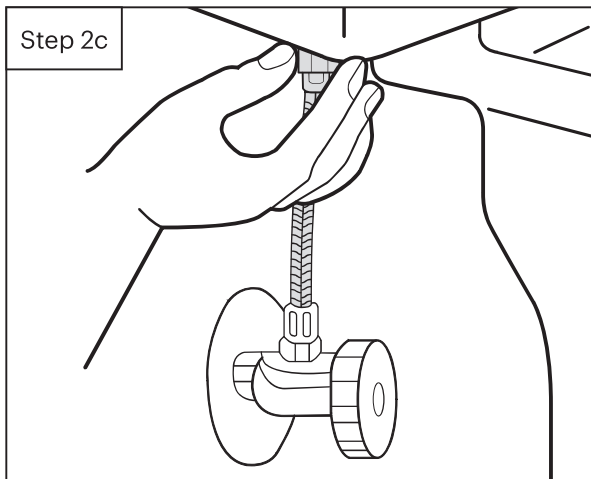
**NOTE:** Steps may vary by type of seat and toilet

## 1. Existing toilet seat removal

- Lift hinge covers and use a screwdriver to remove the mounting bolts.
- Remove the toilet seat; keep for future use.

## 2. Turn off water supply valve and flush toilet

- Turn water valve off to stop the flow of water.
- Flush toilet and hold down handle to completely empty tank.
- Disconnect water supply hose from toilet tank; do not disconnect from the water supply valve.



### NOTES:

You may wish to place a container under the tank to catch excess water.

Do not continue without completing the above steps.

Failure to do so could result in flooding, leaking, or damage to the Swash.

3. Connect the top of the T-valve to the incoming water connection on the bottom of your toilet tank

### NOTES:

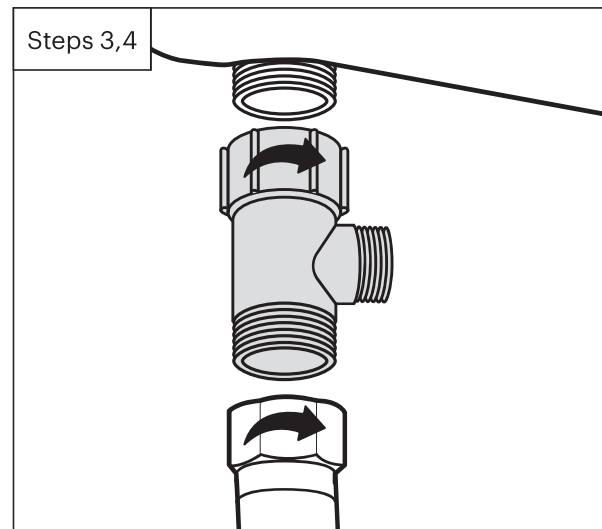
The T-valve connects to the fill valve directly under your toilet tank—it does not connect at the wall.

Check to ensure the rubber washer sits flat inside of the T-valve.

Only connect to the cold toilet water supply line.

If your water supply line is rigid you may need to replace the water supply line before continuing.

4. Connect the water supply line coming from the wall to the bottom of the T-valve

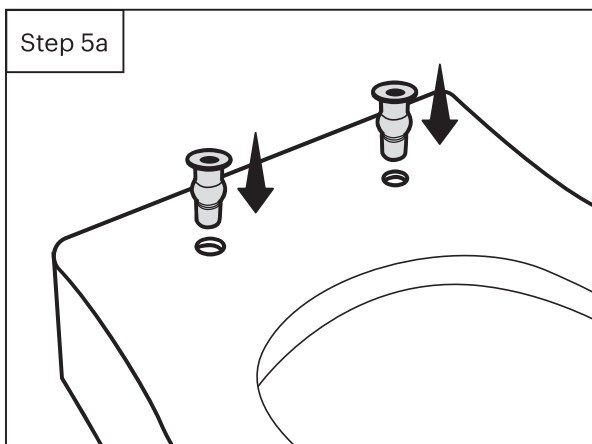


Continued following page

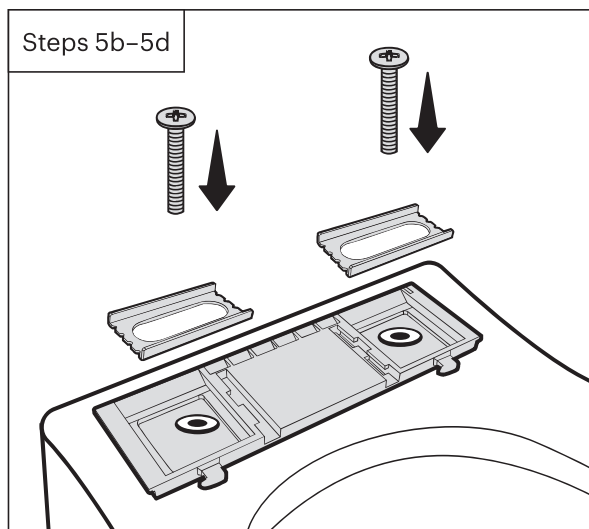
## 5. Installing mounting plate

- a. Wet the rubber anchors with water, squeeze the sides of the anchors, and firmly press them all the way down into the mounting holes on top of the toilet.

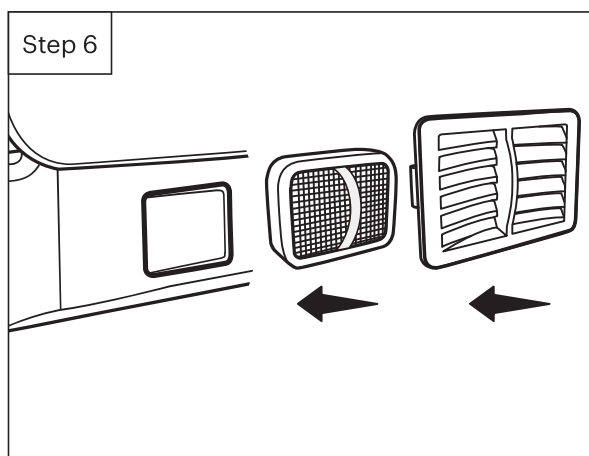
**TIP:** Wetting the rubber anchors will allow for easier installation. The top of the anchors should be flat to the surface.



- b. Place the mounting plate over the rubber anchors on the toilet.
- c. Place the adjustable brackets flat side down on the mounting plate over the rubber anchors.
- d. Insert the metal mounting bolts through the adjustable brackets and rubber anchors; use a Phillips screwdriver to screw in the mounting bolts and tighten.



6. Insert the deodorizer cartridge into the back of the bidet body and attach the deodorizer cover until it snaps into place.

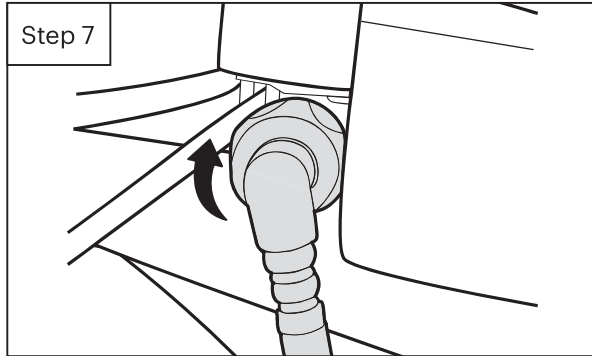


Continued following page

## Swash Installation (Cont'd)

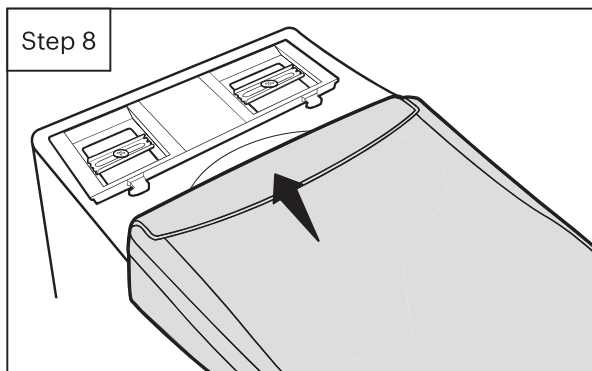
### 7. Connect the bidet hose to the seat

Connect the bidet hose to the water inlet and hand-tighten to secure; take care not to twist the bidet hose, excessively bend it, or strip the plastic screw threads when screwing the hose onto the bidet seat.



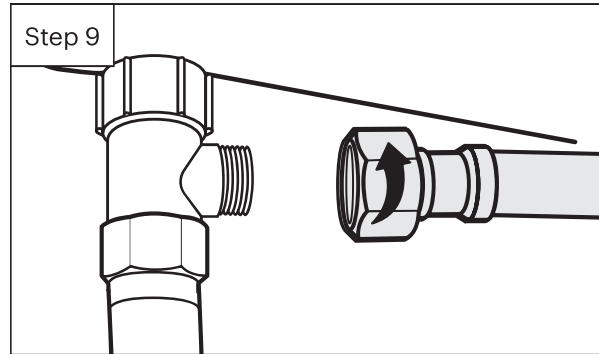
### 8. Attach the bidet seat to the mounting plate

- Set the bidet seat flat on the toilet bowl in front of the mounting plate. Slide seat forward onto plate until it clicks into place and is secure.



- If the seat does not align with the front edge of the toilet bowl, remove the seat by pressing the quick-release button located on the right side of the seat and slide it off the mounting plate.
- Loosen the bolts and slide the mounting plate back or forth to readjust the placement; reinstall the seat and check the alignment to the edge of the toilet bowl (you may need to remove, readjust, and reinstall multiple times).
- When the seat is lined up properly, tighten the bolts and reinstall the bidet seat.

### 9. Connect the open end of the bidet hose to the T-valve



### 10. Turn on the water supply

- Open the main water supply valve slowly and check for leaks.
- Wait 5 minutes, check again and, if there are no leaks, continue.

### 11. Plug the power cord into an electrical outlet; nozzle will extend and retract.

#### NOTES:

Make sure to only use a grounded GFCI (ground fault circuit interrupter) electrical outlet, as in the case of a short circuit, a grounded GFCI outlet may help prevent electric shock or injury.

If it is necessary to use an extension cord, only use those rated for a minimum of 15 amps with a 3-wire extension cord and a 3-blade grounding plug.

### 12. Pair the remote control

- Insert 3 AAA batteries (included) into the remote within 5 minutes of plugging the seat into a GFCI outlet.
- After inserting batteries, a blue light on the remote will turn on.
- Press any button within 5 seconds before light turns off. A melody will play to confirm remote pairing.
- Repeat the process if the remote did not pair.

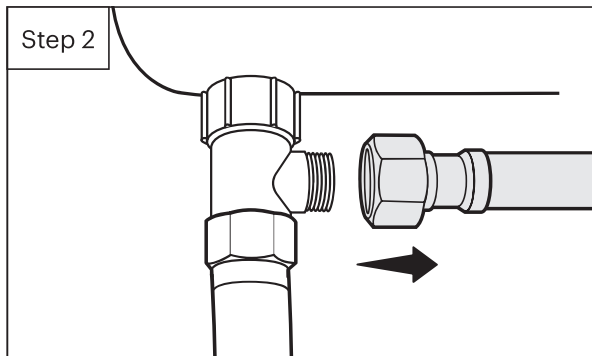
### 13. Follow instructions on page 19 for using the bidet seat

## PRODUCT INSTALLATION

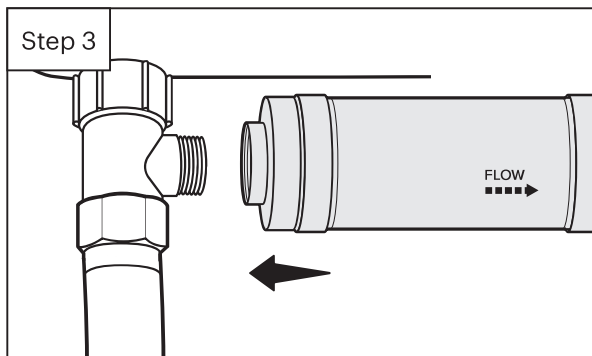
# External Bidet Filter Installation (optional, not included)

**NOTE:** Customers with hard water, well water, and softened water can extend the life of their bidet seat by purchasing and installing an external inline water filter to be used with the bidet seat. The bidet filter should be changed every 6 months and can be purchased online at [brondell.com](http://brondell.com).

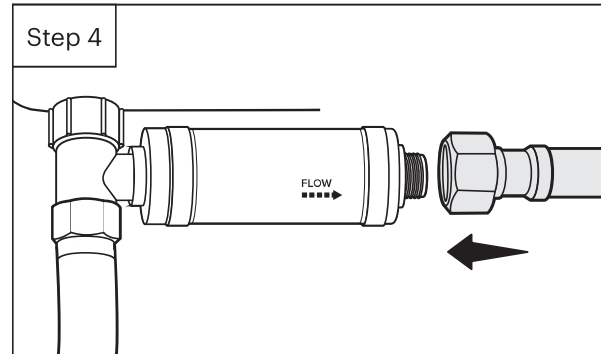
1. Turn off water supply valve and flush toilet
  - a. Turn water valve off to stop the flow of water.
  - b. Flush toilet and hold down handle to completely empty tank.
2. Disconnect the bidet hose from the T-valve



3. Connect the female end of the Swash filter to the open T-valve connection



4. Connect the bidet hose to the male end of the Swash filter



5. Turn the toilet water supply valve back on