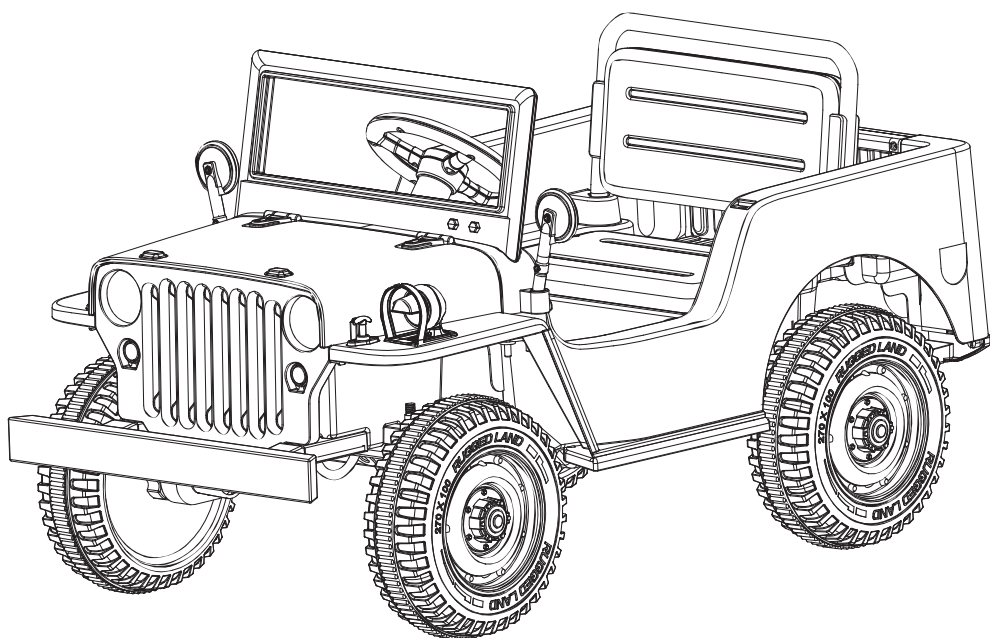


## Instruction for installation and use of JH-103 baby carrier

- ◆ Light switch
- ◆ Multifunctional remote control
- ◆ 2.4G slow boot
- ◆ Multifunctional media player

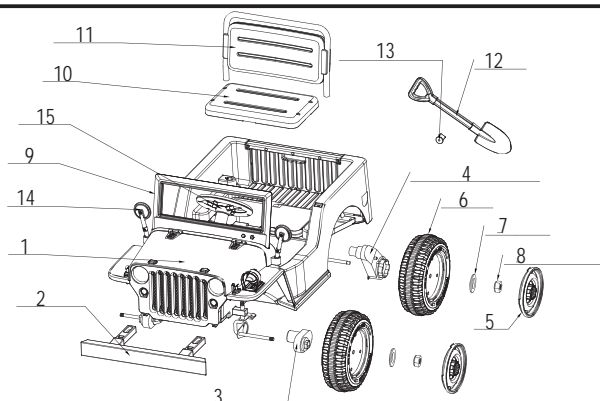


Instructions to be read before use.  
Remember to keep the instruction for further reference.

## Thanks for choosing our product

One extraordinarily crucial thing before using this product is to read the instructions carefully. It will tell you detailed installing steps and the right way to use it. It will also teach you how to avoid operation mistakes, so that you won't break this product and harm the rider. Please remember these items and guide them to your children. Please keep it appropriately and put it in the place where you can acquire easily.

Specification	Dual-wheel	Four-wheel drive
Storage battery	12V4.5Ah x1 12V7Ah x1	12V4.5Ah x1 12V7Ah x1
Drive Motor	RS380 DC-12V RPM16000*2 RS390 DC-12V RPM16000*2	RS380DC-12V RPM16000*4 RS390DC-12V RPM16000*4
Steering Motor	RS380SP-12V RPM5000*1, RS390SP-12V RPM5000*1	RS380SP-12V RPM5000*1, RS390SP-12V RPM5000*1
Charger	Input AC220V-240/50HZ-60HZ Output DC12V0.5A	Input AC220V-240/50HZ-60HZ Output DC12V1A
Load limit	30KG	30KG
Using time	1hour after charging	1hour after charging
Speed	3-3.5KM/H	3.5-4KM/H
Age limit	37-95months	37-95months
Remote distance/remote	15+-5M/ AAA1.5V*2	15+-5M/ AAA1.5V*2
Size	110X60X58CM	110X60X58CM
Gross weight	16.2KG	17.2KG
Net weight	13.8KG	14.8KG



1	Body	1	8	M10 locknut	4	15	Steering wheel	1
2	Front bumper	1	9	Windshield	1			
3	front drive motor (optional)	2	10	Seat	1			
4	Rear drive motor	2	11	Backrest	1			
5	Wheel cap	4	12	Toy shovel	1			
6	Wheel	4	13	Toy shovel fastener	1			
7	M10 gasket	4	14	Reflector	1			

Attention: Please check the vehicle accessories before assembling!

## Safe using matters

- This product is not for children under 3-year old or above 8-year old.
- The assembling and charging process could only be operated by adults. Please pay attention to the screw split pin.
- Please check whether the device and circuit are properly assembled during assembly.
- This car cannot be used on dangerous places like roads and slopes.
- This car should only be rode under adult's supervision.
- Do not change the structure, line and additional electrical devices without permission.
- Do not switch the forward/backward frequently.
- Examine the product and charger regularly to see whether the parts are becoming old or dropped off. When damage is found, the product should be stopped using until fixed.
- Only rechargeable batteries can be used.
- Batteries can only be interposed in right poses.
- Rechargeable batteries should be taken out before used-off.

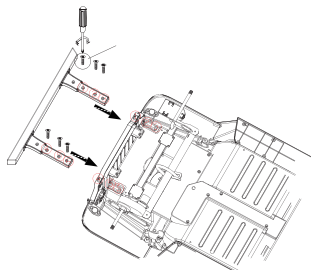
- Positive and negative poles short circuit is strictly prohibited.
- Rechargeable batteries should only be charged by adults; when playing this car, the distance between the car and an adult cannot be more than 10 meters.
- Children cannot stand in the car.
- The car is outfit with seat belt. Make sure the child has fastened it.

**Warning!**

When change the gear, please make sure the car is completely stopped. Or it will damage the gear case and motor.

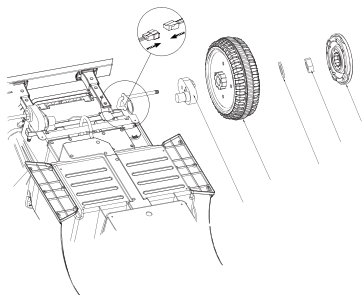
### Matters need attention when charging

- 1.Before the firsts use of the car, make sure the battery has been charged more than 4-6 hours, or the battery would be damaged permanently and cannot be repaired. When charging, first open the charging cover and then plug in the charging jack, and then plug the charger in the power socket, the product cannot be operated when charging (The charging process has to be operated by adults)
- 2.When the battery is low, please charge it in time. Normally the charging hour is 8-12 hours, but do not charge it more than 15 hours.
- 3.It is normal that the battery jar emits heat (below 60 centigrade), but when the temperature is too high, you should examine whether the recharging process is short-current.
- 4.Only chargers and battery equipped by this car can be used. Chargers and battery jars of another brand are strictly prohibited. Or the charger and battery might be damaged.
- 5.The car cannot be operated when charging.
- 6.New/old and different kinds of batteries cannot be used together.
- 7.Please check the circuit when the car is charging.
- 8.When the product is packed away or will not be used for a long time, you have to fully charge the battery and charge it once every month (to guarantee the lifetime of the battery).
- 9.The charger and battery are not toy. Children should not be allowed to play with them.



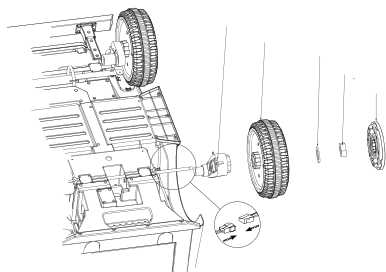
## 1: Installing front bumper

- a) Put the bumper on the body of the car as shown;
- b) Tighten and fix with 6 M4\*12mm flat head tapping screws 6 M4\*12mm flat head tapping screws



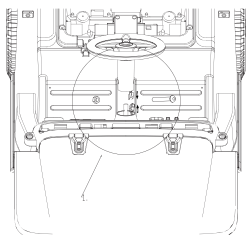
## 2: Installing front wheel

- a) As shown in the figure, first install the left and right ("L" "R") drive motor on the front axle and connect the cable of the drive motor;
- b) Finally, as shown in the figure, install (front drive wheel -M10 gasket -M10 lock nut - wheel cap) on the front axle.



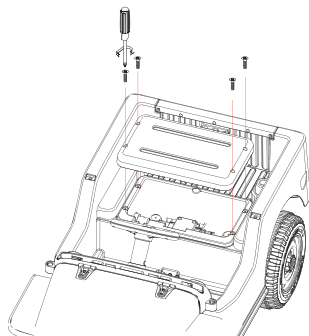
## 3: Installing rear wheel

- a) As shown in the figure, first install the left and right ("L" "R") drive motor on the rear axle and connect the cable of the drive motor;
- b) Finally, as shown in the figure, install (front drive wheel -M10 gasket -M10 lock nut - wheel cap) on the rear axle.



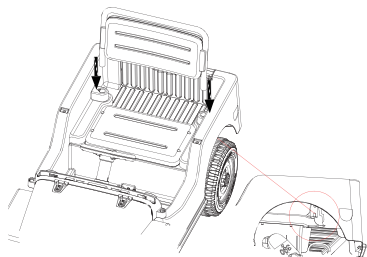
## 4: Installing steering wheel

- a) As shown in the figure, connect the connecting wire on the steering wheel with the connecting piece on the instrument platform;
- b) Finally, the steering wheel is clamped into the slot on the instrument platform and fixed with the M5\*35mm screw and the M5 locknut.



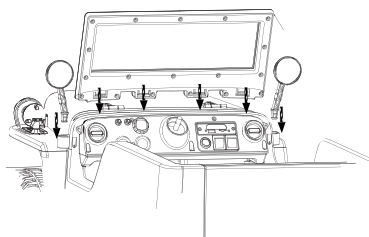
## 5: Installing cushion

- a) As shown in the figure, place the seat in the car body slot;
- b) Finally, tighten and fix it with 4 M4\*12mm flat head tapping screws.



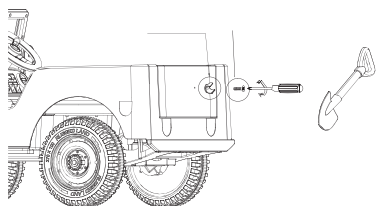
## 6: Installing backrest

- a) Insert the seat back into the body hole as shown in the figure.



## 7: Installing windshield and left & right reflectors

- a) As shown in the figure, the left and right reflectors and windshield frame are clamps into the body card slot and clamps tightly.

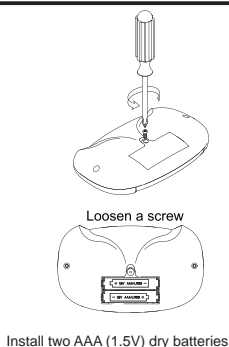
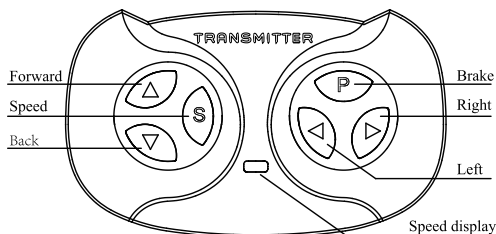


## 8: Installing toy shovel fastener and toy shovel

- a) As shown in the figure, first fix the toy shovel fastener on the rear box plate with a M4\*12mm flat head tapping screw;
- b) Finally, the toy shovel can be stuck on the fixed seat.

## JR1602FCC Remote Control Manual

- (1). Supply Voltage—DC 3.0V , Battery 2\*1.5V AAA (not included)
- (2). Frequency 2.407GHz-2.473GHz (Peak output power: 5dBm)
- (3). Instructions



- a. First time use need to match code, this product has memory function

Replace battery is unnecessary match code

- b. Hold down “▲” & “▼” keys for 3 seconds start match code, The first LED flicker

- c. Turn on the car body power now , The first LED lit up, Match code Success

- d. Remoter 10 seconds not run will be standby ,Press any key wake up

- e. Keys caption : “△” Forward, “▽” Back, “◁” Left, “▷” Right, “S” Speed, “P” Brake.

Press “S” key set up speed , 1 led lit up is low speed , 2 leds lit up is medium speed , 3 leds lit up is high speed , Back a car is only low speed

Press “P” key hold the brake, All LED flicker

※ The remote controller only can be used with adult's guidance

This device complies with part 15 of the FCC Rules.

Operation is subject to the following two conditions:

- (1) This device may not cause harmful interference, and
- (2) this device must accept any interference received, including interference that may cause undesired operation.

Note: This equipment has been tested and found to comply with the limits for a Class B digital device, pursuant to Part 15 of the FCC Rules. These limits are designed to provide reasonable protection against harmful interference in a residential installation. This equipment generates, uses and can radiate radio frequency energy and, if not installed and used in accordance with the instructions, may cause harmful interference to radio communications.

However, there is no guarantee that interference will not occur in a particular installation. If this equipment does cause harmful interference to radio or television reception, which can be determined by turning the equipment off and on, the user is encouraged to try to correct the interference by one or more of the following measures:

Reorient or relocate the receiving antenna

Increase the separation between the equipment and receiver.

Connect the equipment into an outlet on a circuit different from that to which the receiver is connected.

Consult the dealer or an experienced radio/TV technician for help.

Warning: Changes or modifications to this unit not expressly approved by the part responsible for compliance could void the user's authority to operate the equipment.

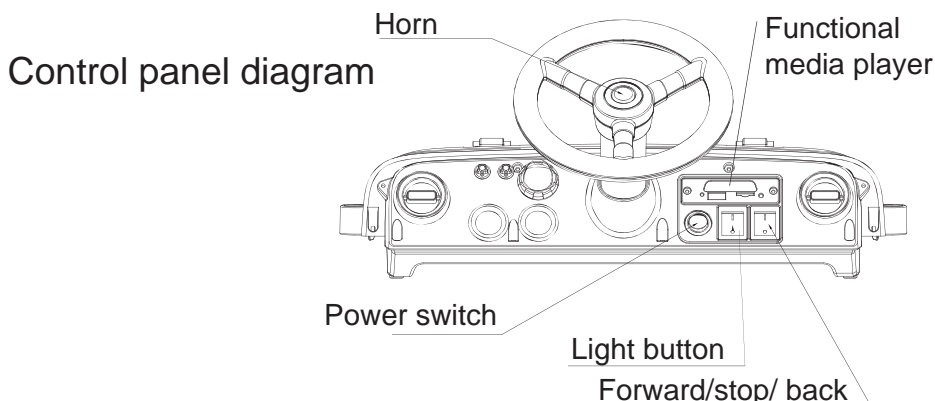
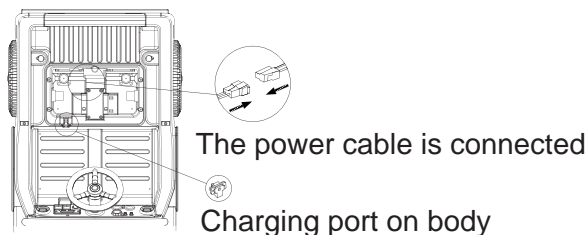
FCC Radiation Exposure Statement

The device has been evaluated to meet general RF exposure requirement.

The device can be used in portable exposure condition without restriction.

## Charging indication chart

- a) When the voltage on the right side of the instrument panel is less than 10V, the power is low. Please charge the battery in time;
- b) When charging, the vehicle is in charging protection state, and the power supply of the vehicle cannot be started; After the charging port of the charger is pulled out from the charging seat of the car body, the whole vehicle is adjusted to normal mode.



- a) power switch——
  - 1) The dashboard is powered up, the lighting system lights up with the engine sounds meanwhile;
  - 2) Dashboard equipped with music function operator, volume adjustment, power display and other functions.
- b) Steering wheel——
  - 1) There is a music button on the steering wheel.
- c) The lighting system is switched on / off by one key——
  - 1) Turn on / off the light.



## Simple maintenance

Fault type	Reason analysis	Exclusion methods
Car's not moving	Battery has low voltage	Recharging the battery
	Battery is broken	Replace new battery
	The nut of the wheel is dropped off	Screw the nut on
	Motor is broken	Go to the maintenance area
	Socket connector of the battery has been missing	Replace new socket connector
	Fuse wire is broken	Change a new fuse
	Power is turned off	Turn on the power
Low speed	Battery is without power	Recharge the battery
	Dead battery	Change motor
	Pavement irregularity	Ride on smooth-riding surface
	Overload	Reduce weight
	Battery is old	Change new battery
Battery cannot be recharged	Charger or motor is broken	Change new charger or motor
	Socket connector of battery is broken	Change new socket
	There is no power	Plug it in
Short flight mileage	Battery off	Recharging the battery
	Battery is old	Change a new battery
Car is shaking when progressing	Connector cable for lens motor contact poorly	Reconnect it
	There's dead spot on the motor	Repair it in maintenance point
Gear has noise	Gear case is broken or run out of gas	Replace gear case or supply gas
	Gear is broken	Change a new gear

## Matters needing attention

- The product should be assembled correctly by adults before usage.
- Keep away from children under 3 or above 8.
- Battery charging process should be performed by adults.
- Ensure a 10-hour-long battery charging process before the first use; otherwise, the battery will suffer permanent damage.
- Keep away from dangerous areas and under adults' supervision.
- For no more one person and the maximum load weight is 30KG totally.
- Make sure the safety belt fastened and the child seated. Dangerous actions as well as standing up are forbidden.
- Do not press the forward/back button abruptly while driving.
- Do not drive in narrow space, in order to avoid damage to the product.
- Go on periodic check. Pay close attention to the security situation of the product and its peripheral equipment.
- Pull out the battery during the long period without use.
- The product should be used with adult guardianship.
- Safe period for use: 3 years.



