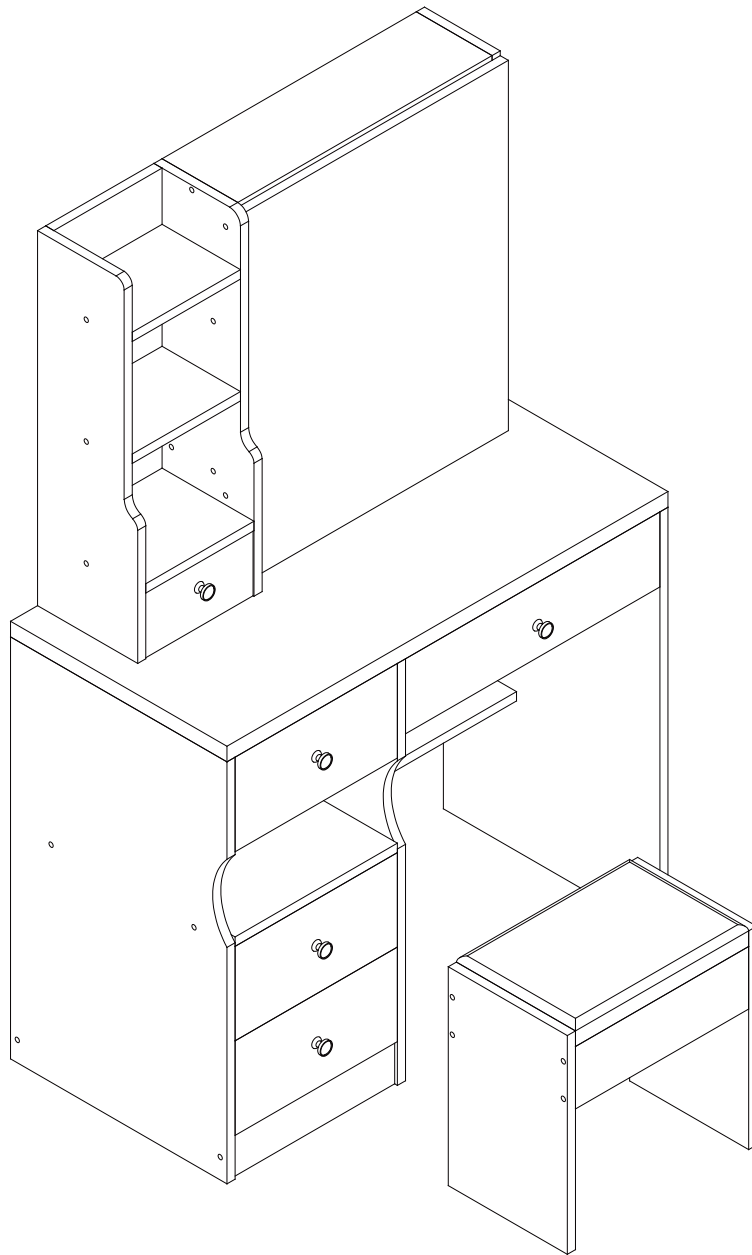


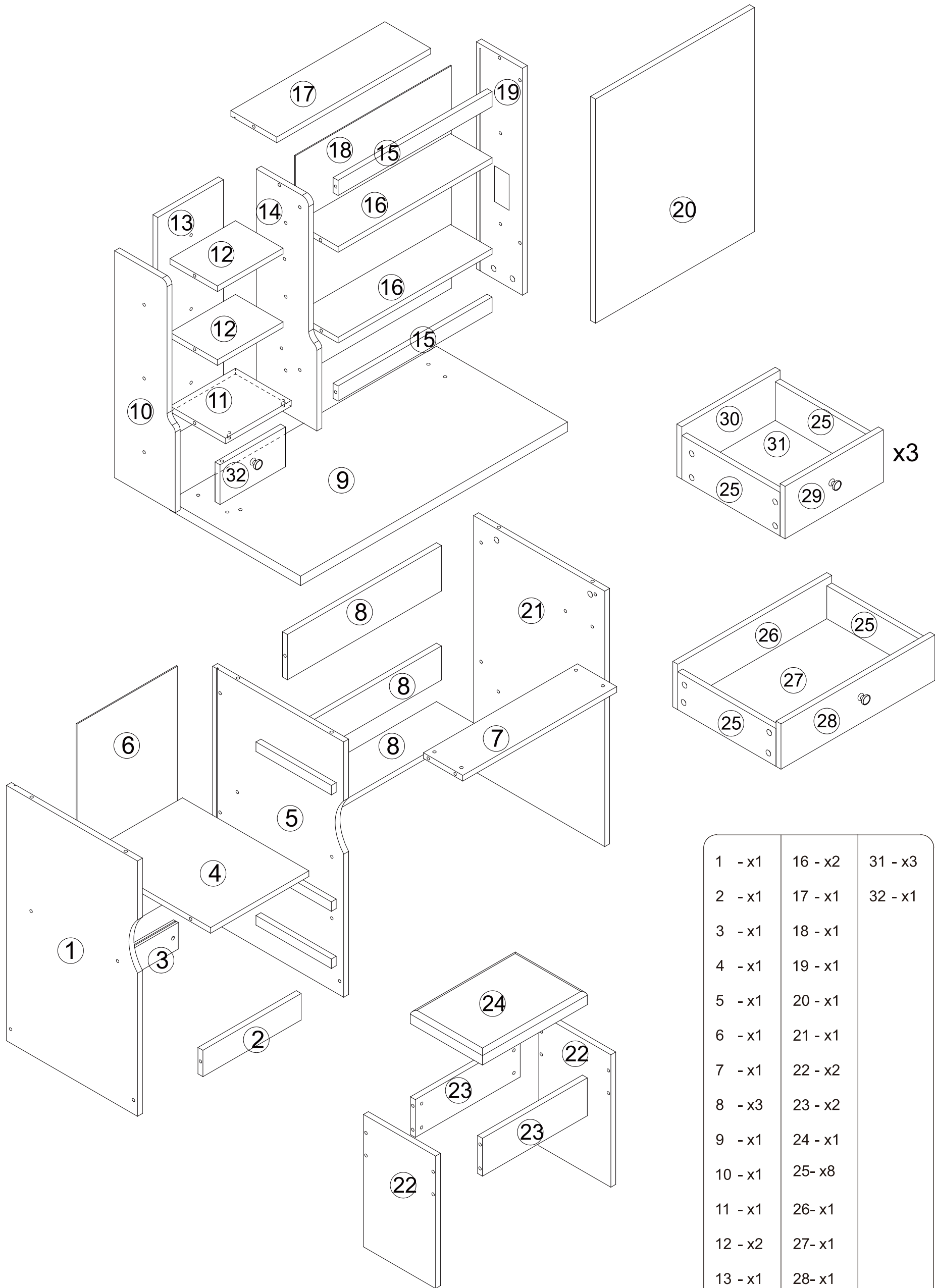
vanity table

**T68S-W, T68S-B, T68S-W-L, T68S-B-L,
T68S-W-LS, T68S-B-LS**

INSTALLATION MANUAL



T68 is the model name, S is small size, W is white, B is black, L represents with mirror light, S represents with built-in socket and hair dryer holder. If your product model is T68S-W, T68S-B, then the product does not come with a mirror light, built-in socket, and hair dryer stand. If your product is T68S-W-L or T68S-B-L, it does not come with a built-in socket and hair dryer stand.



There are two T68s, one with a revolving cabinet door on the left table and the other with a small drawer, the rest are exactly the same. This manual is for the revolving cabinet door model. If it is a small drawer model, simply replace the revolving cabinet door with the small drawer. The structure of the small drawer is as shown in Figure A, and the structure of the revolving cabinet door is as shown in Figure B

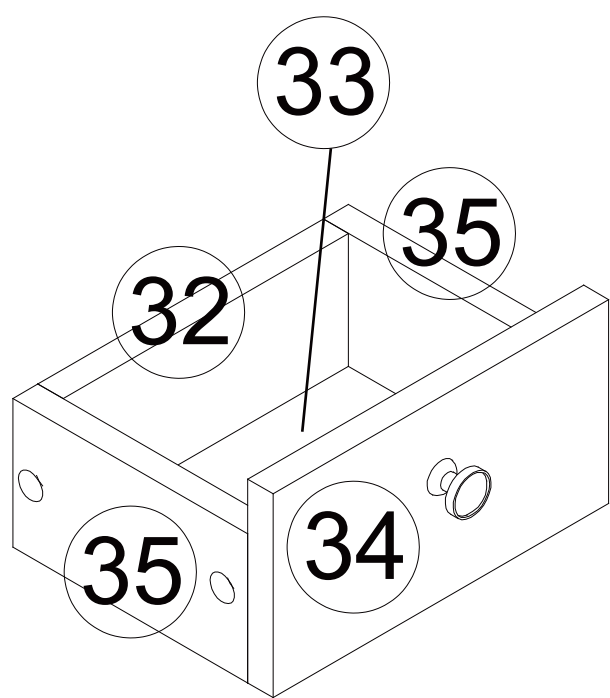


Figure A

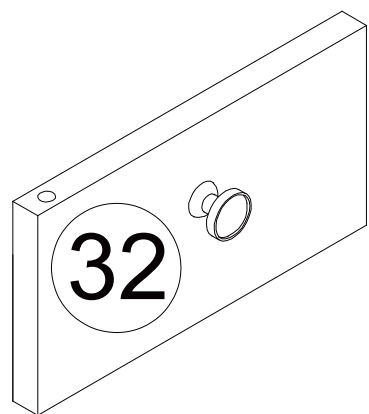


Figure B

Before installation, please find a marker pen with erasable marks, distinguish each accessory based on the shape of the board and the position of the holes, and then write the corresponding numbers on the board.





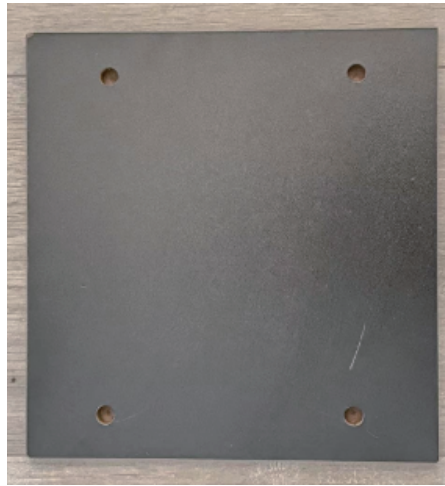
1 -x1



2 -x1



3 -x1



4 -x1



5 -x1



6 -x1



7 -x1



8 -x3



9 -x1



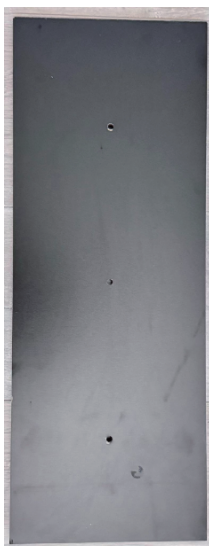
10 -x1



11 -x1



12 -x2



13 -x1



14 -x1



15-x2



16-x2



17-x1



for build-in
socket

18-x1



for not build-in
socket



for build-in
socket

19-x1

or



for not build
-in socket



20-x1



21-x1



22-x2



23-x2



24-x1



25-x8



26-x1



27-x1



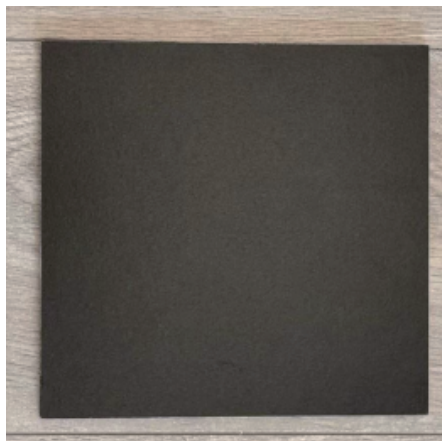
28-x1



29-x3



30-x3



31-x3

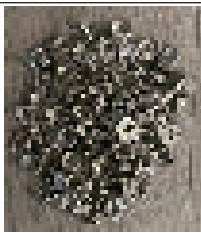


32-x1

hardware



| | | |
|---|-------|-----|
| A | screw | x44 |
|---|-------|-----|



| | | |
|---|------------|-----|
| B | metal LOCK | x44 |
|---|------------|-----|



| | | |
|---|-------|-----|
| C | SCREW | x12 |
|---|-------|-----|



| | | |
|---|------------|----|
| D | GUIDE RAIL | x2 |
|---|------------|----|



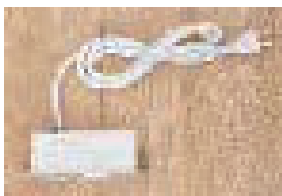
| | | |
|---|--------------|----|
| E | HANDLE SCREW | x5 |
|---|--------------|----|



| | | |
|---|---------|----|
| F | L PLATE | x2 |
|---|---------|----|

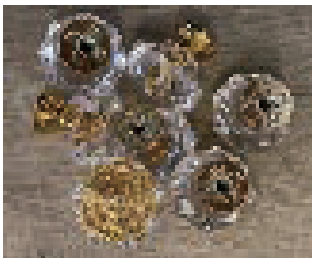


| | | |
|---|-------|----|
| G | screw | x9 |
|---|-------|----|



| | | |
|---|--------|----|
| H | SOCKET | x1 |
|---|--------|----|

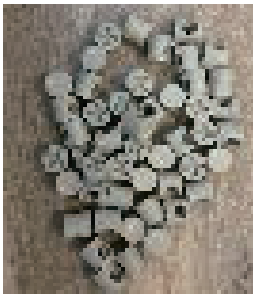
ONLY FOR 9I8S-LS



| | | |
|---|-------|----|
| L | SCREW | x5 |
|---|-------|----|



| | | |
|---|-------|-----|
| J | SCREW | x47 |
|---|-------|-----|



| | | |
|---|---------------|-----|
| K | PLASTIC LOCKS | x47 |
|---|---------------|-----|



| | | |
|---|------------------|----|
| I | HAIR DRYER STAND | x1 |
|---|------------------|----|

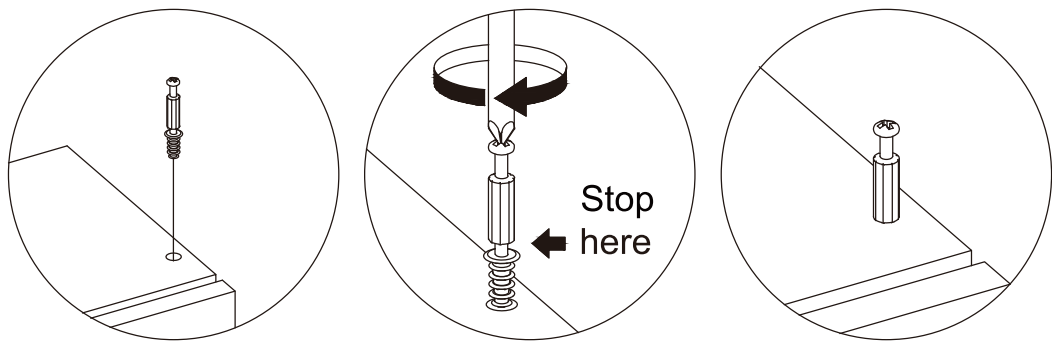
Only for LS



| | | |
|---|-----------|----|
| M | PIVOT PIN | x2 |
|---|-----------|----|

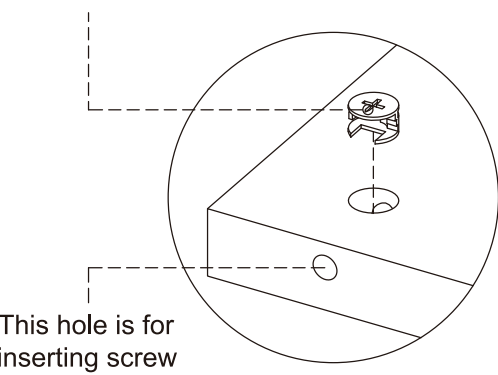
1.

Screw installation method
When the screw is installed, please keep it in line with the board,
and do not tighten it too tightly



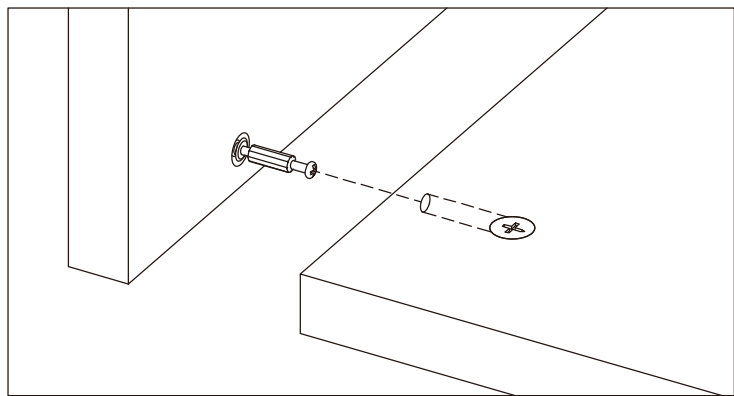
2.

Check the Nut direction
This direction of the marked nut is consistent
with the direction in which the screw is inserted



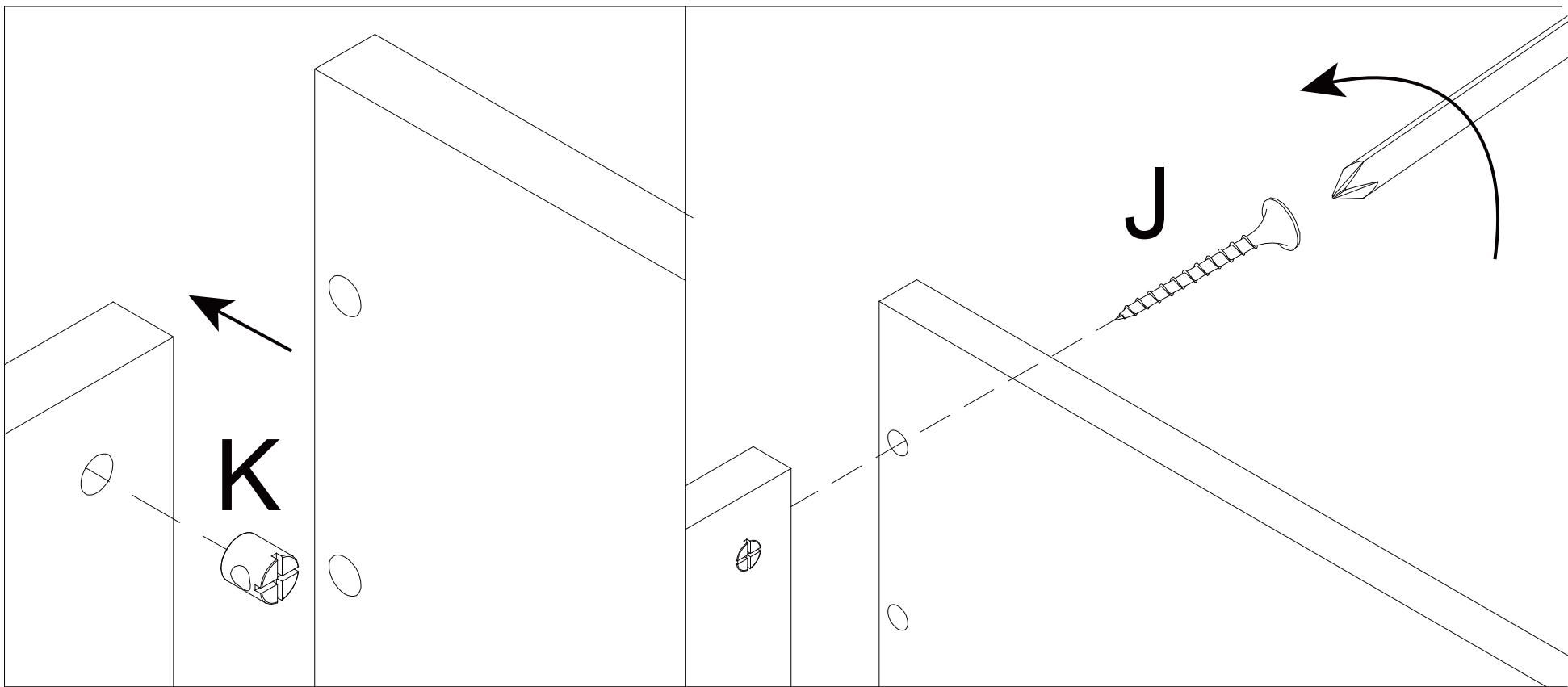
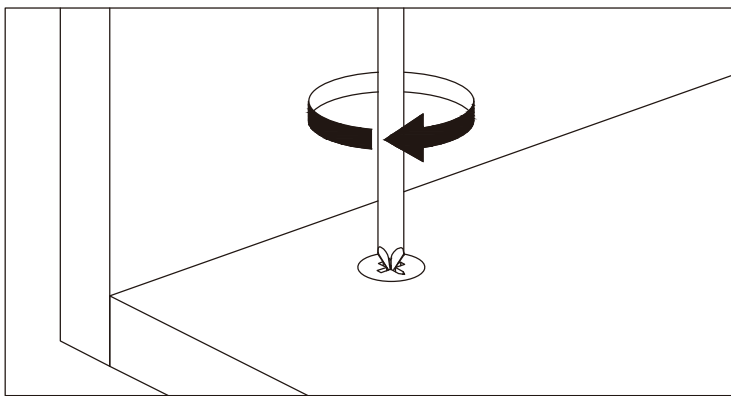
3.

Installation on thr board with fixing screws



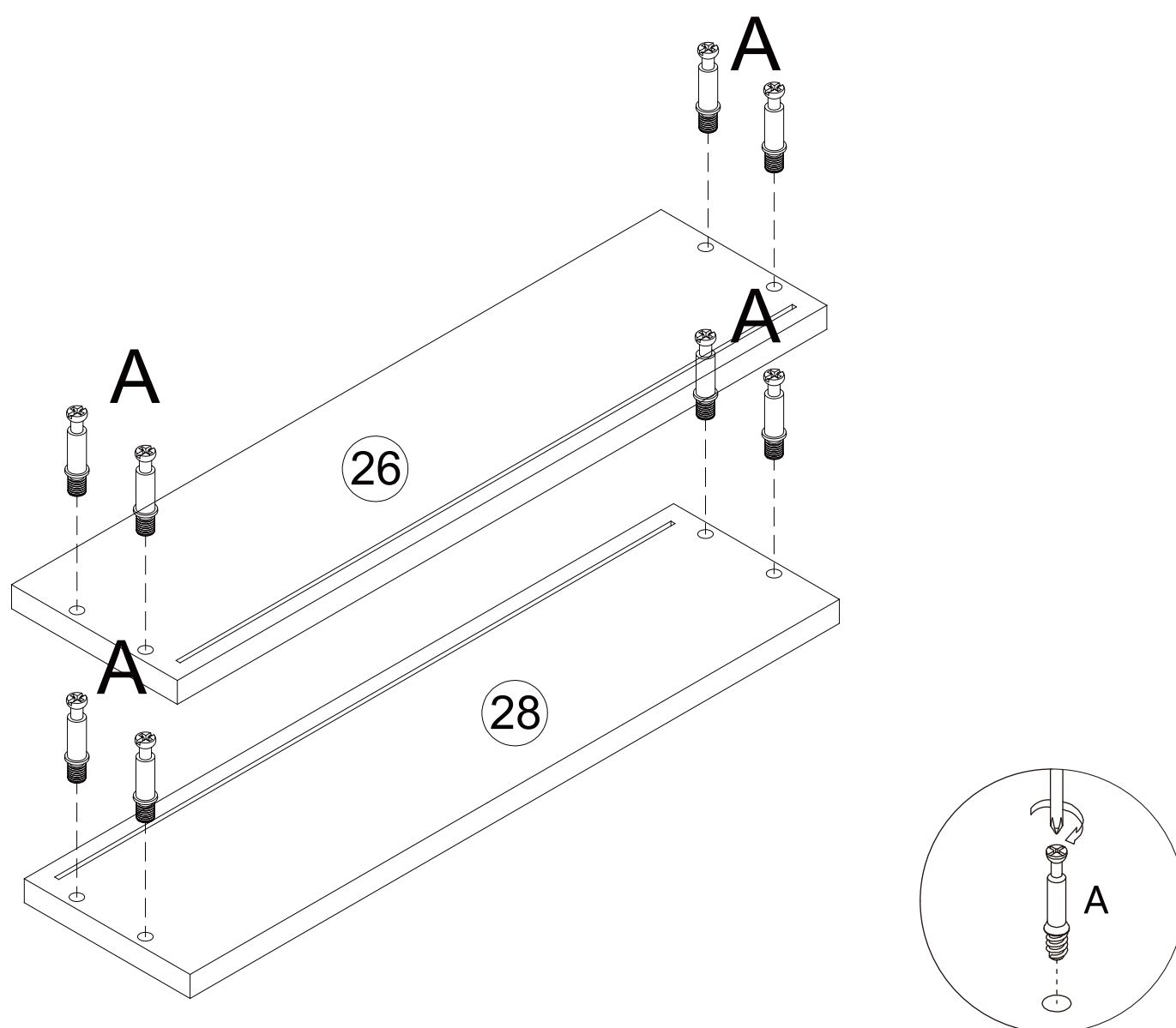
3.

Rotate slowlyuntil it stops

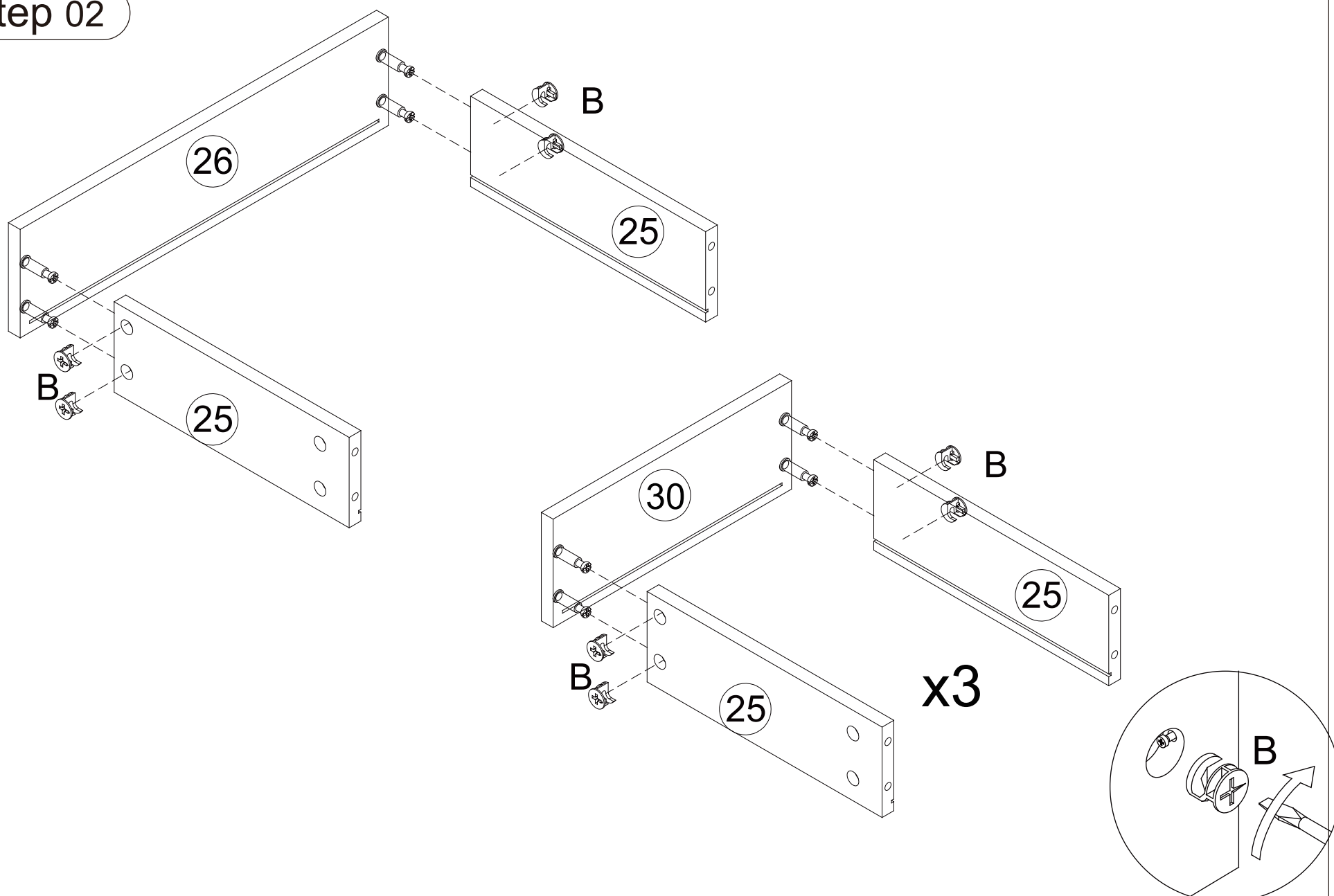


Step 01

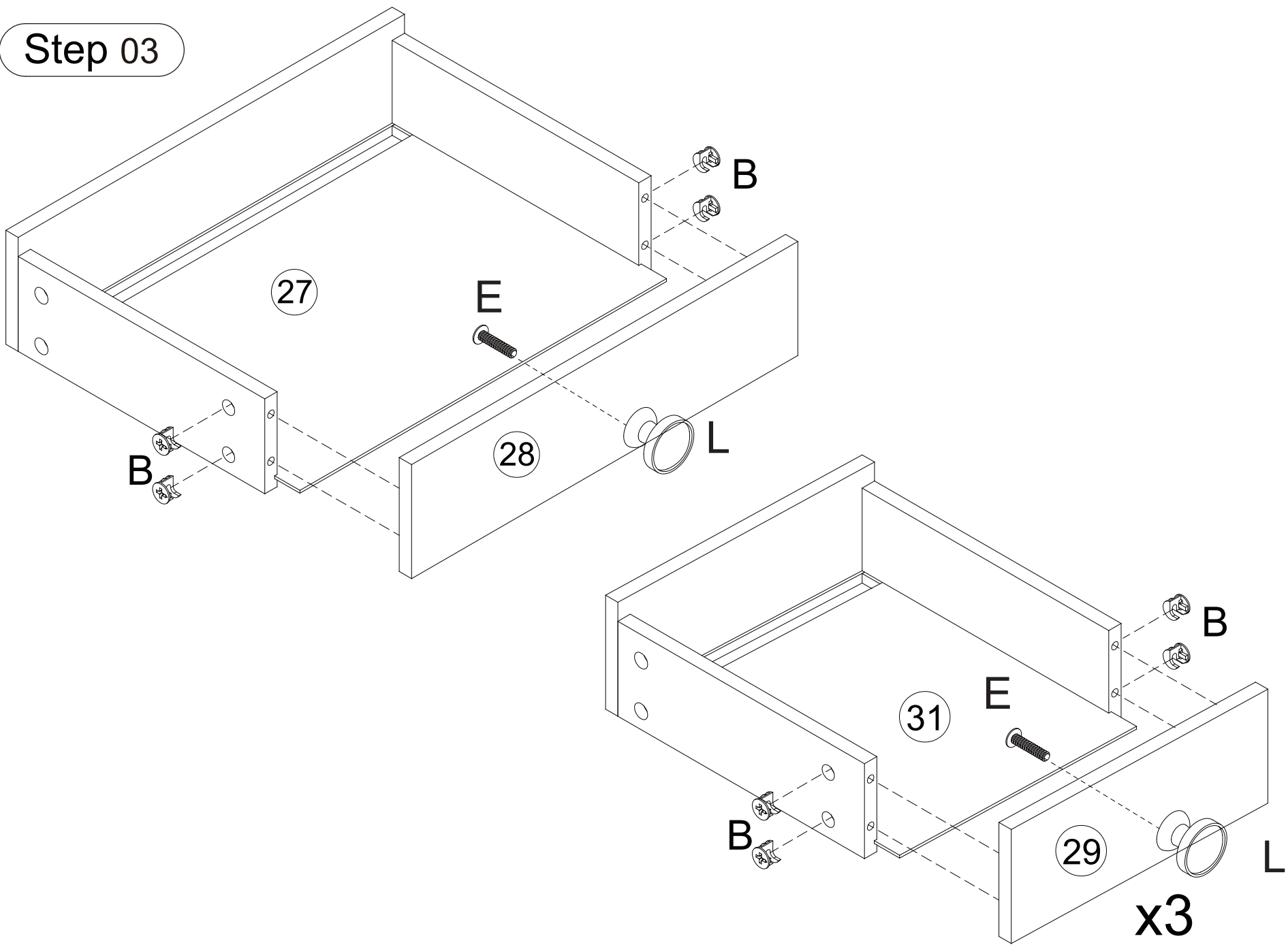
pick up (26) x1, (27) x1, (28) x1, (25) x2 and (29) x3, (30) x3, (31) x3, (25) x6



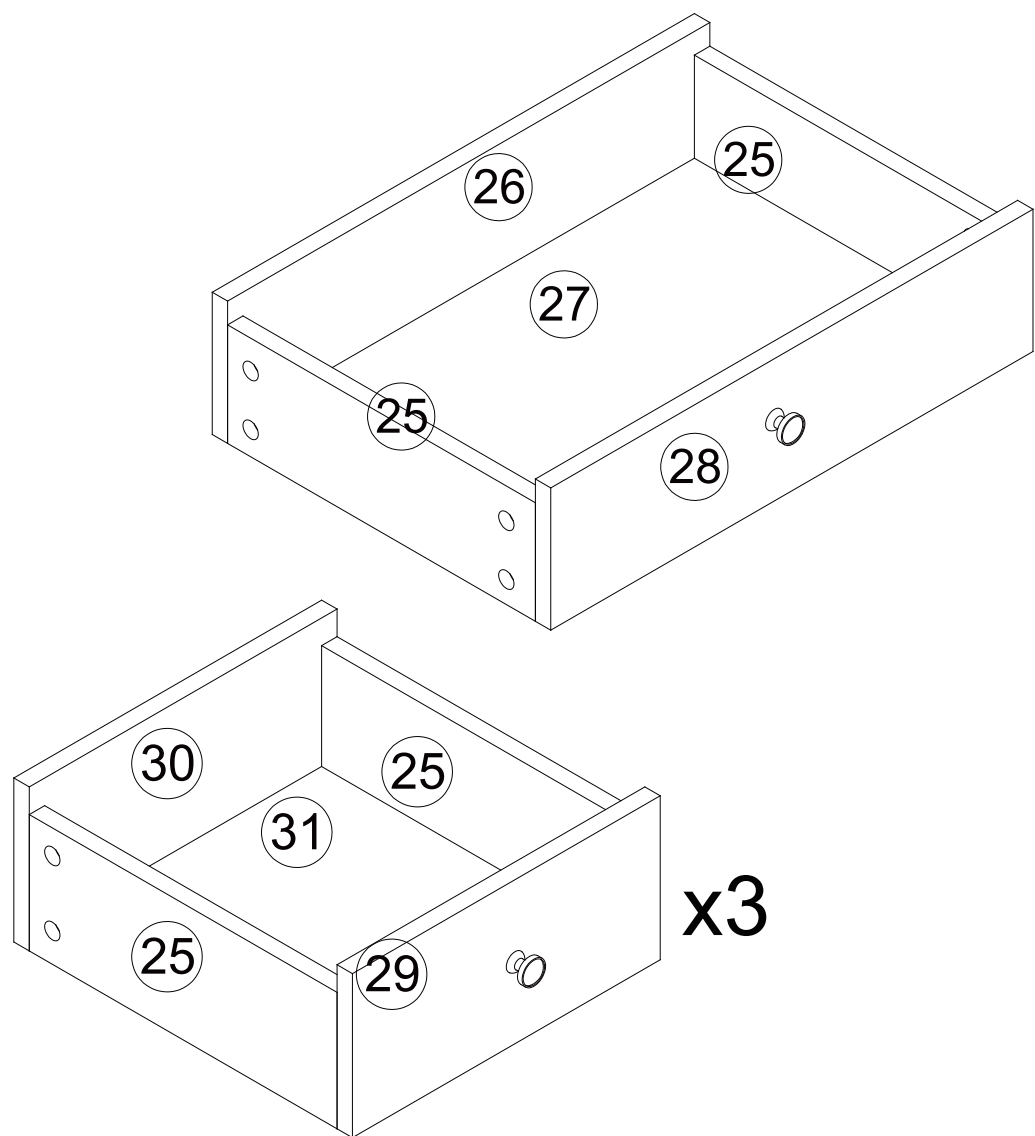
Step 02



Step 03



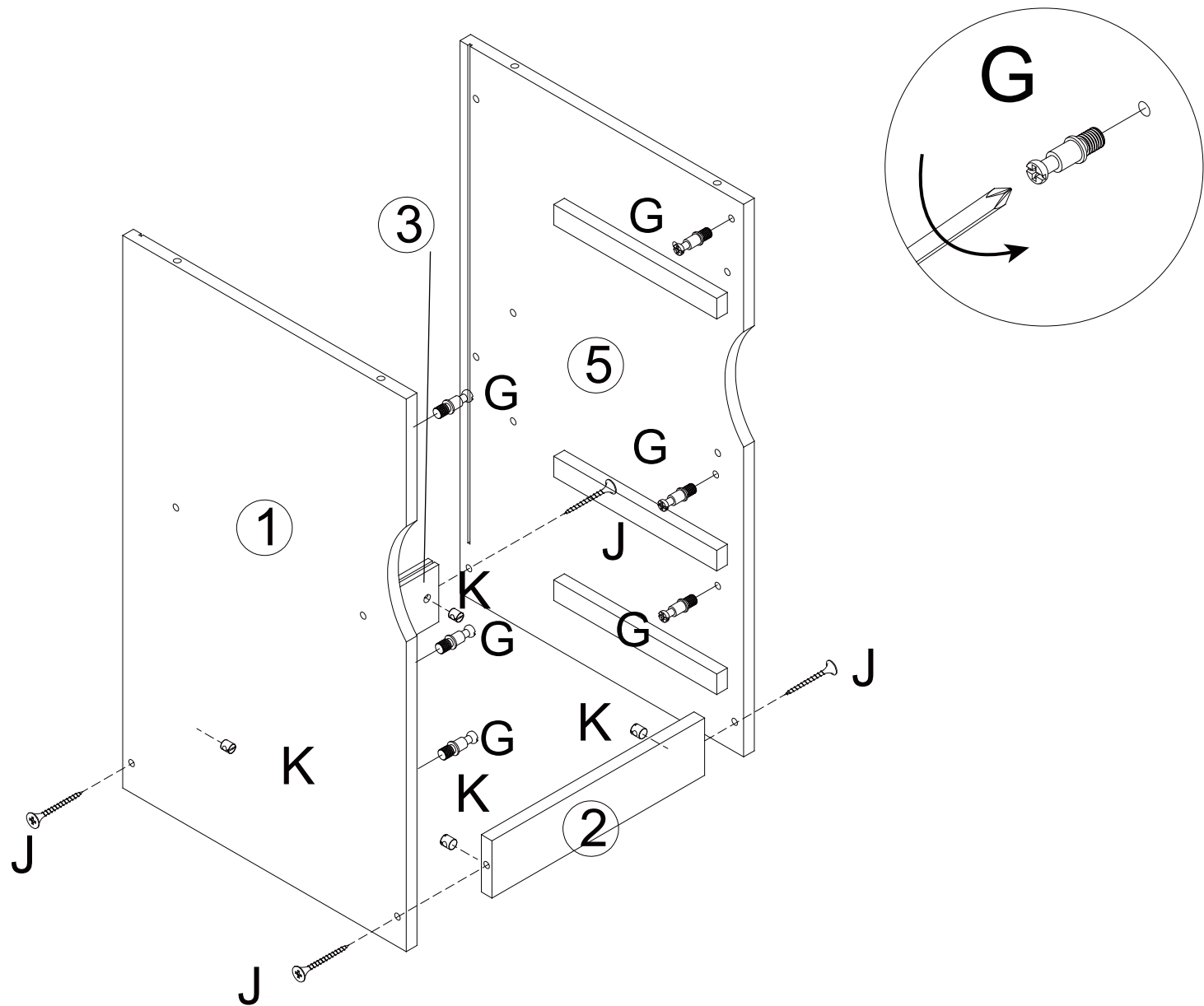
Step 04



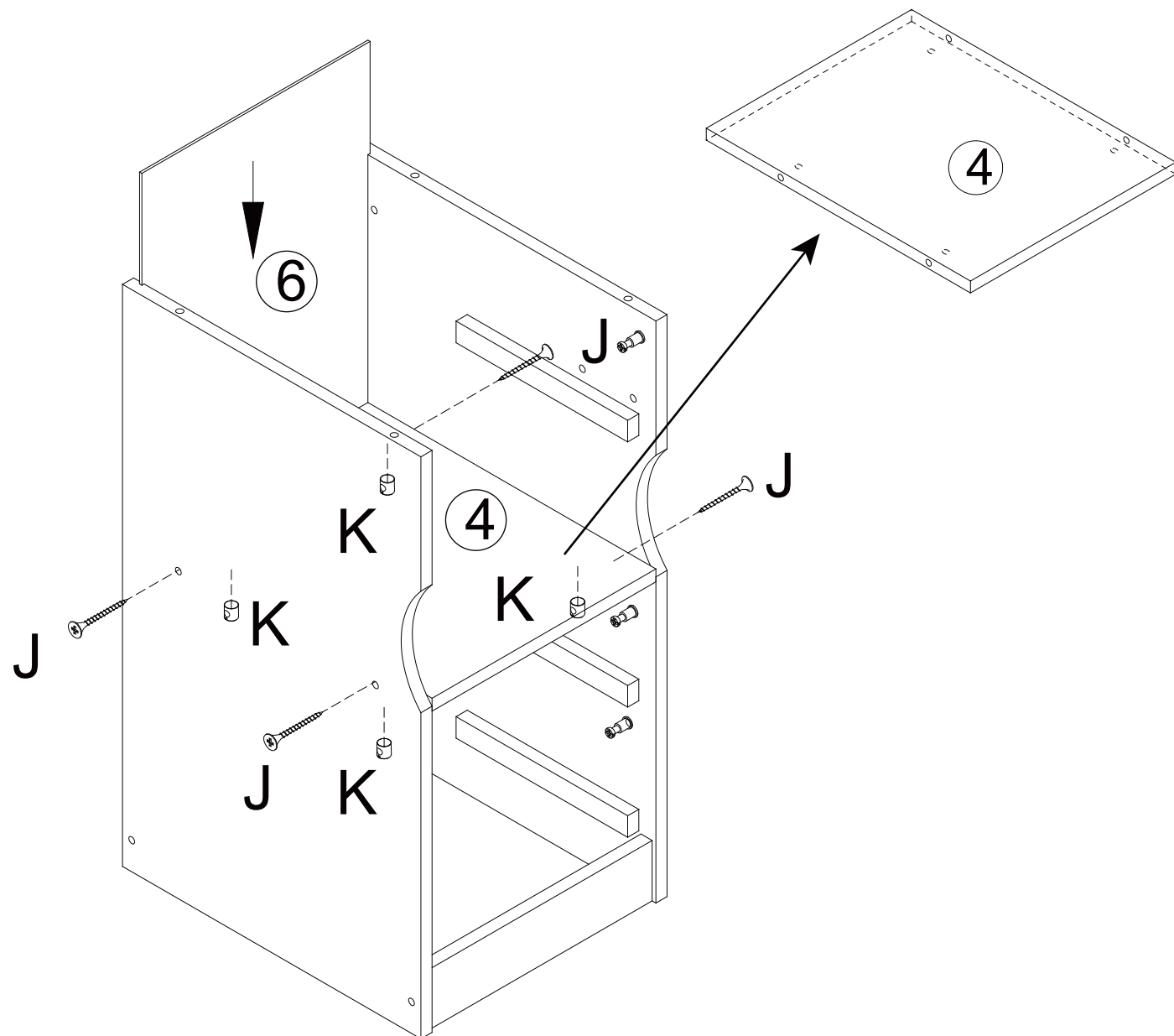
Three drawers are installed in the same way

Step 05

pick up ②x1, ③x1, ①x1, ⑤x1, ⑥x1, ④x1

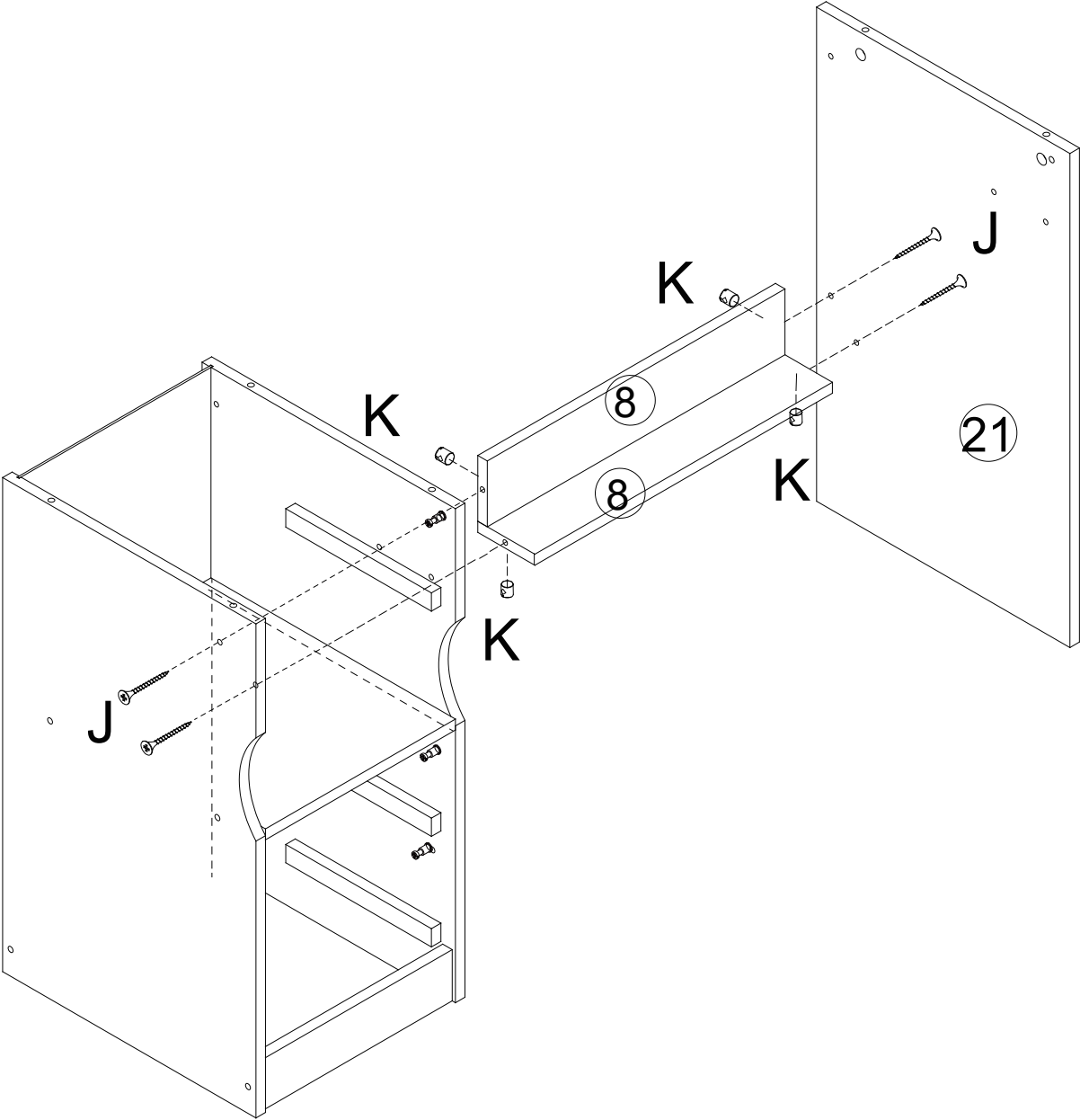


Step 06

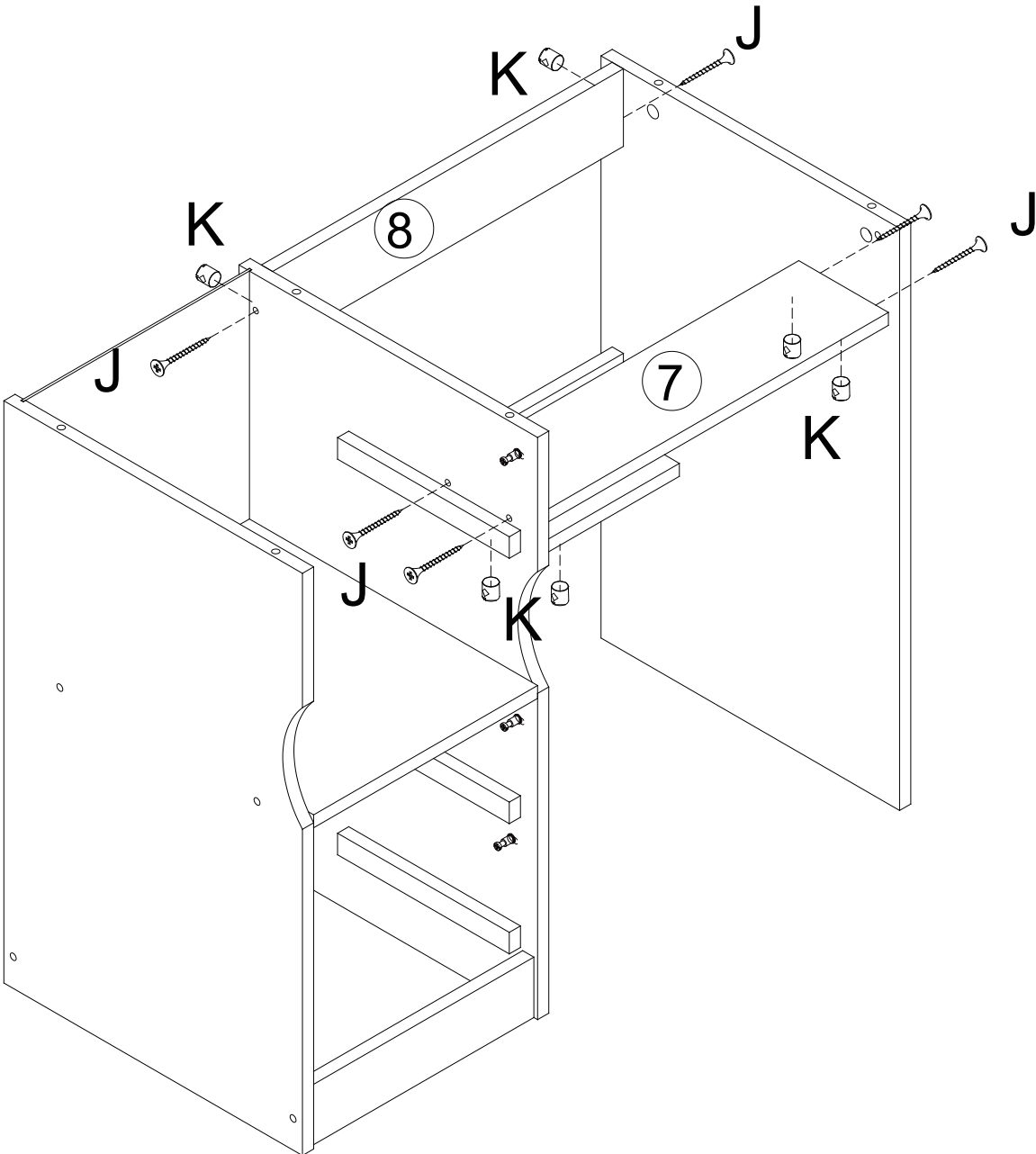


Step 07

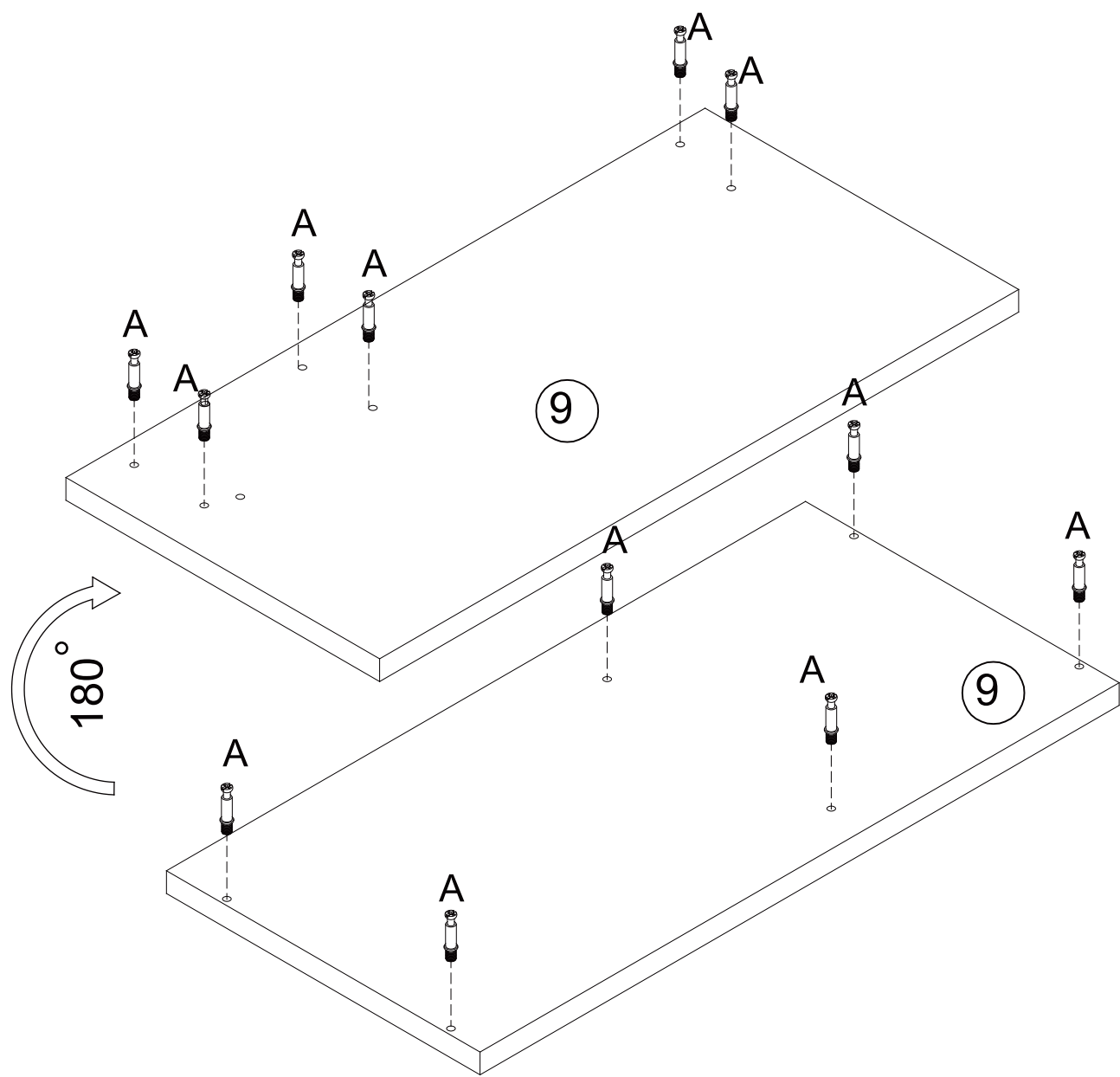
pick up ⑦x1, ⑧x3, ②① x1, ⑨x1



Step 08

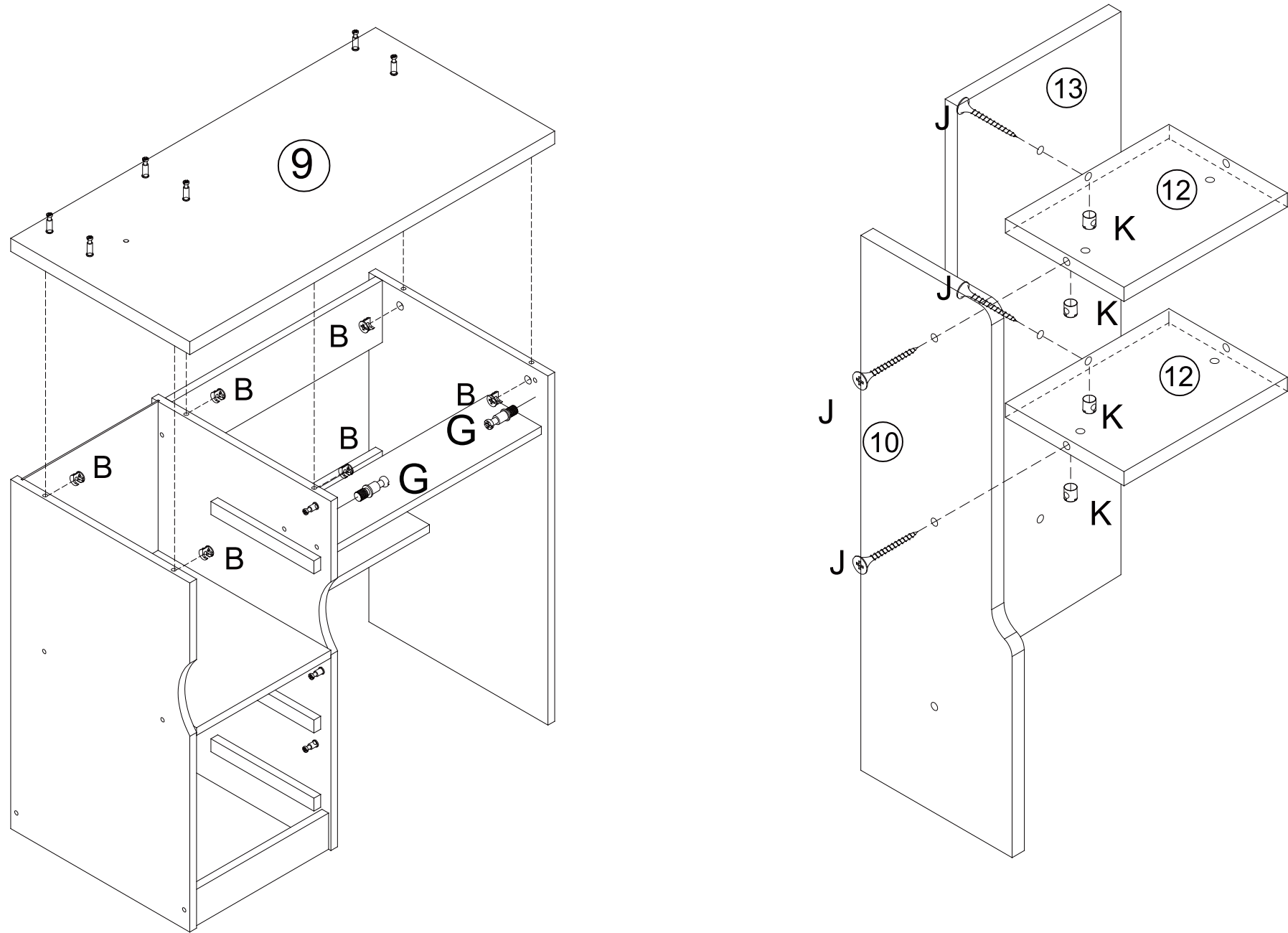


Step 09



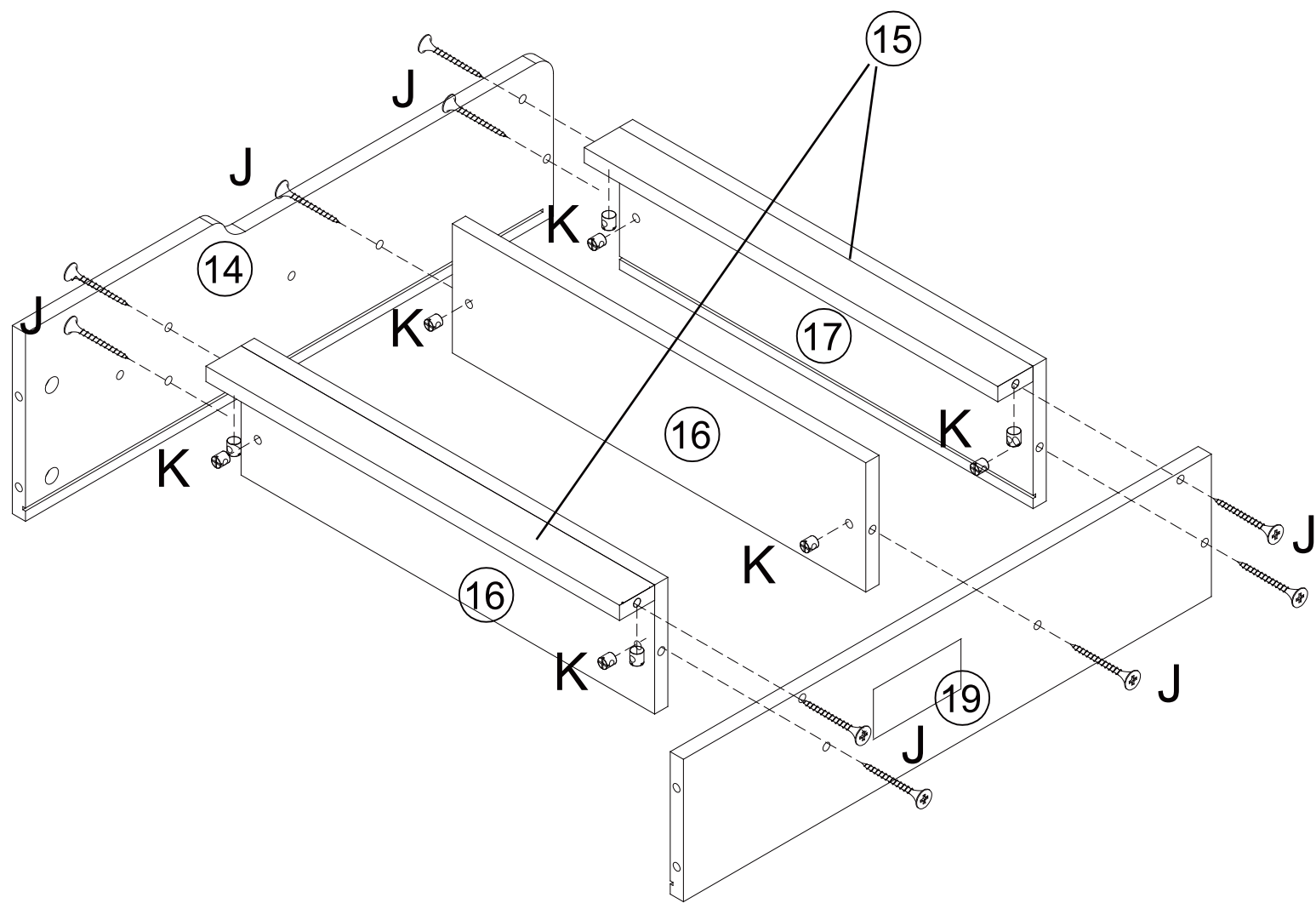
Step 10

pich up ⑩ x1, ⑫ x2, ⑬ x1

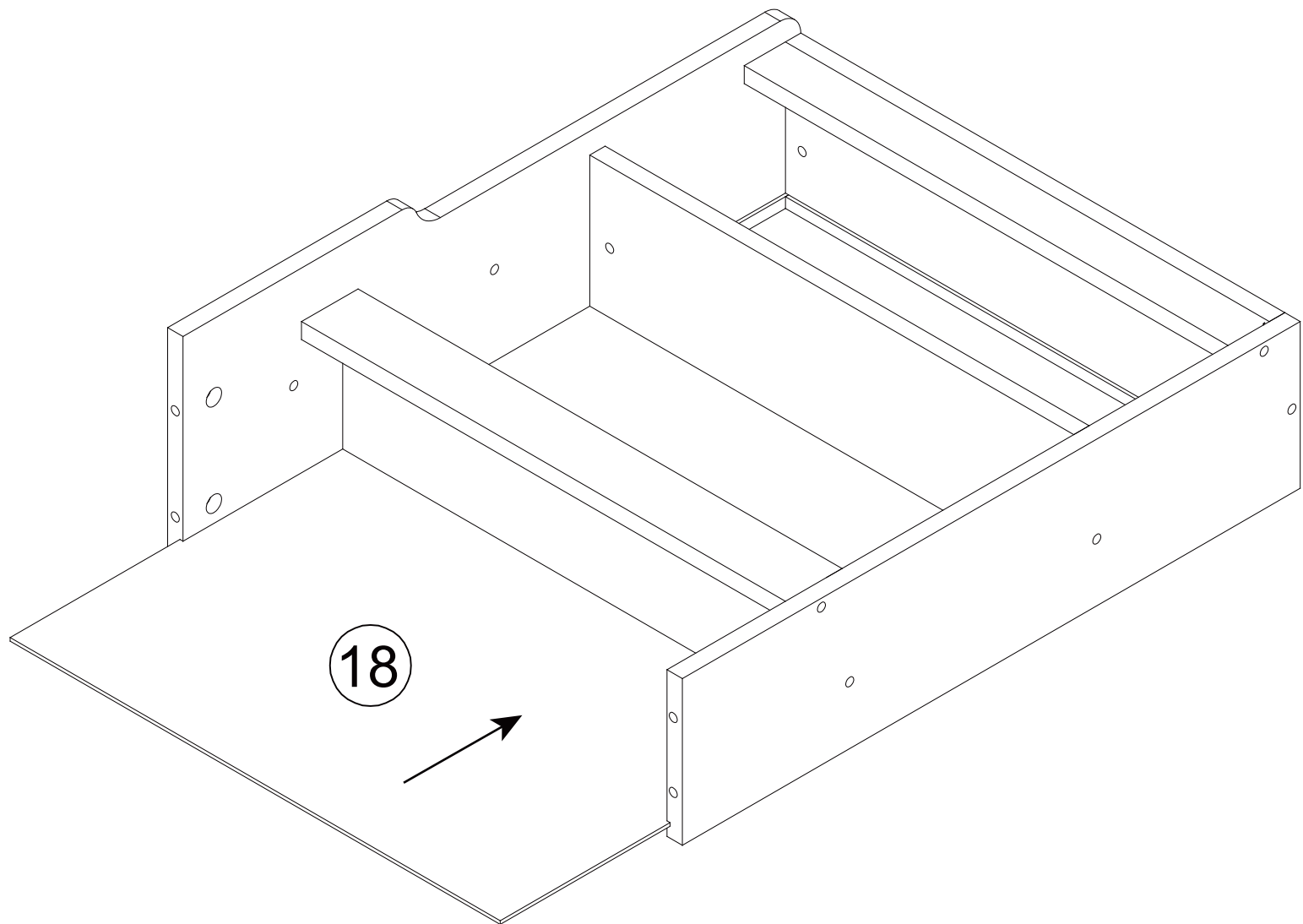


Step 11

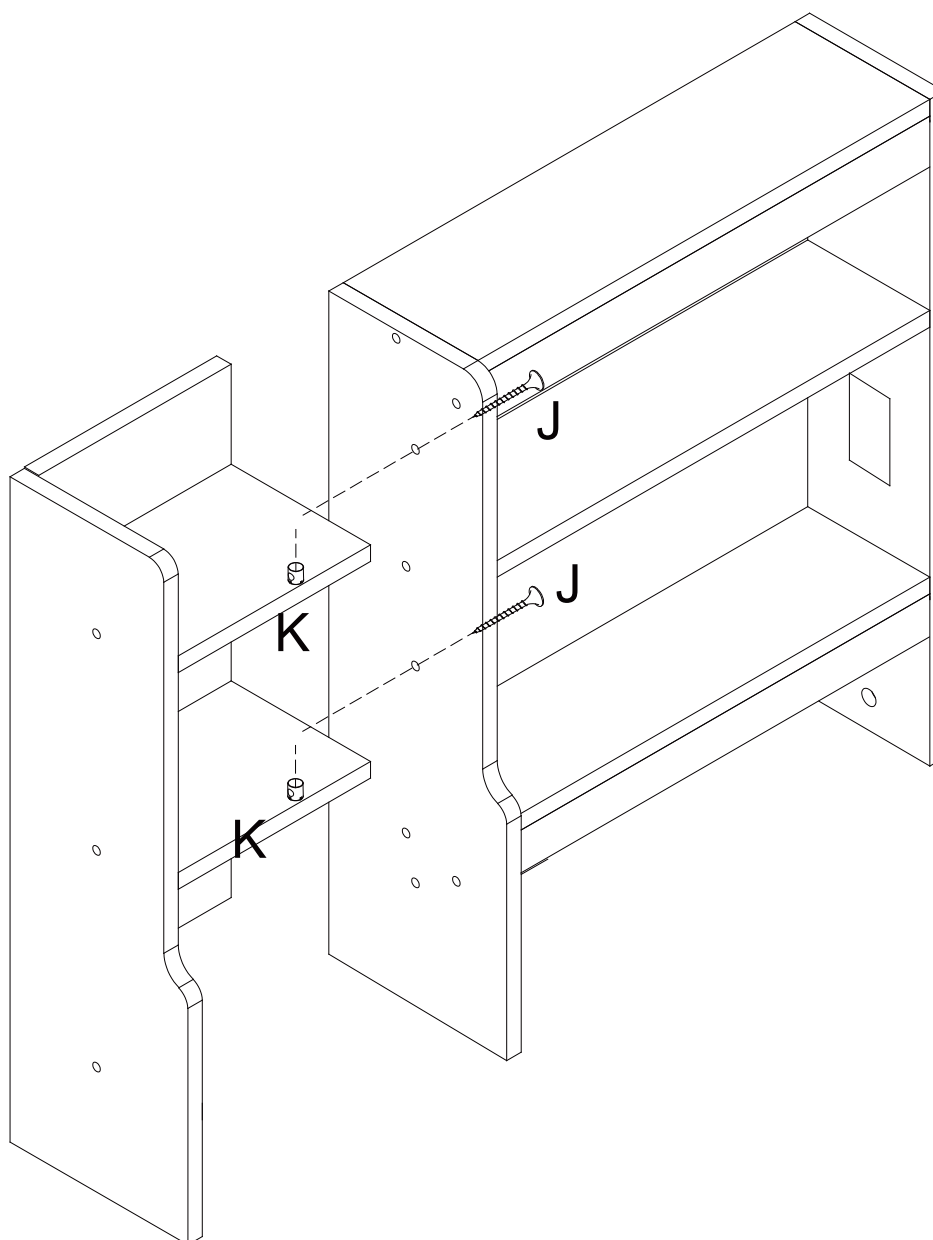
pick up 14 x1, 19 x1, 15 x2, 16 x2, 17 x1, 18 x1



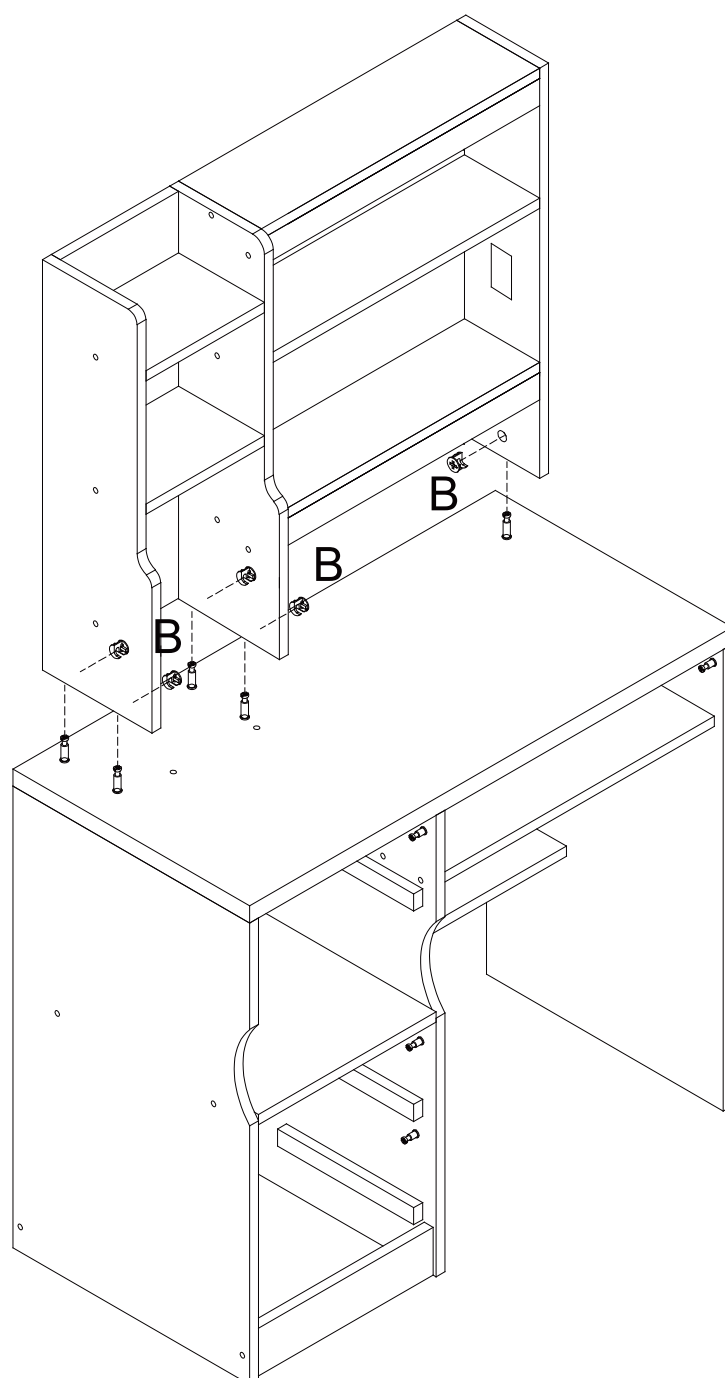
Step 12



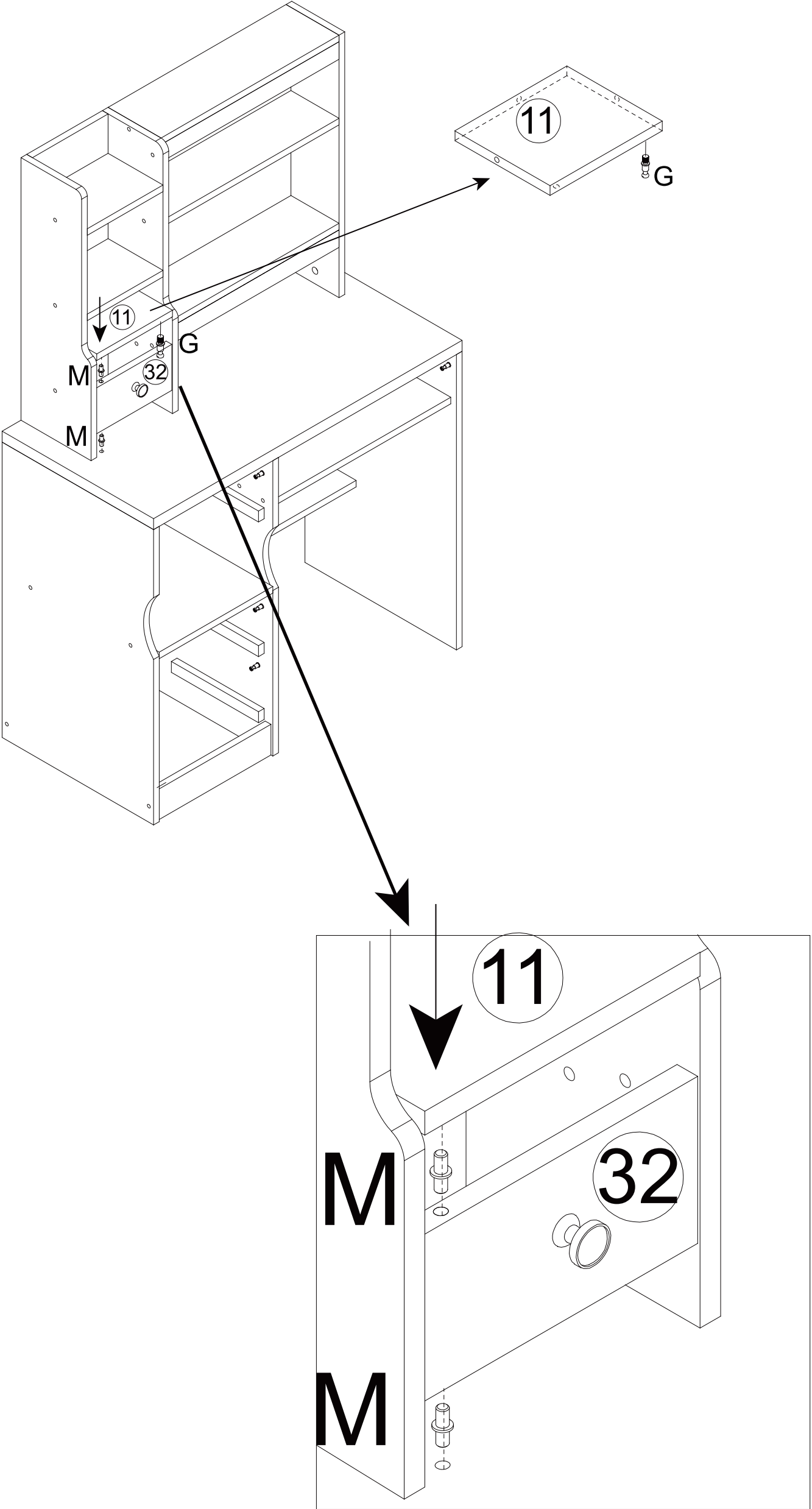
Step 13

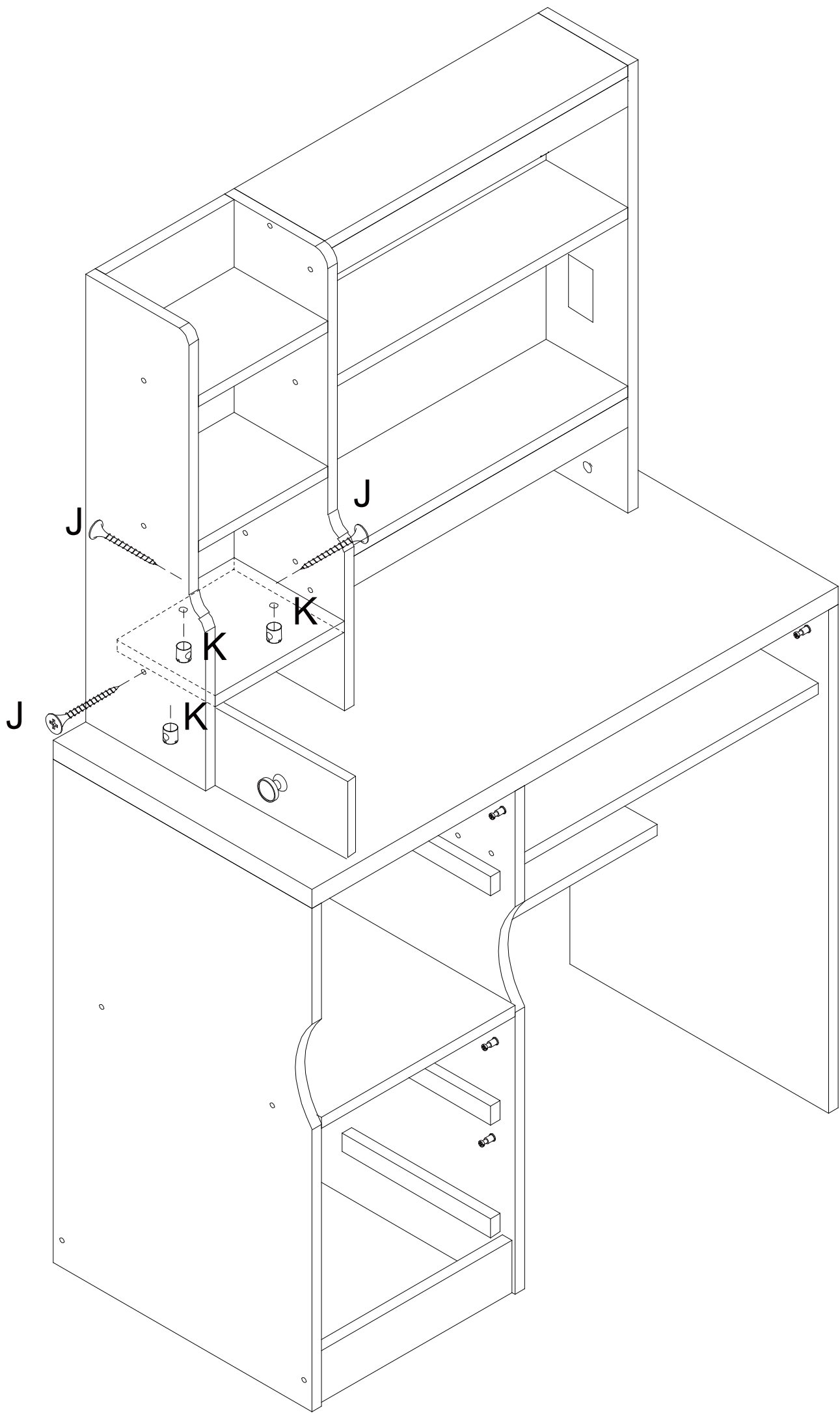


Step 14



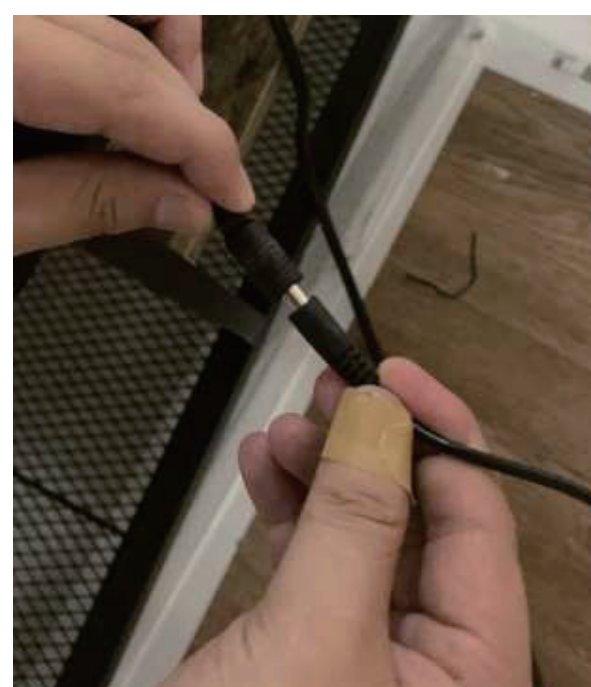
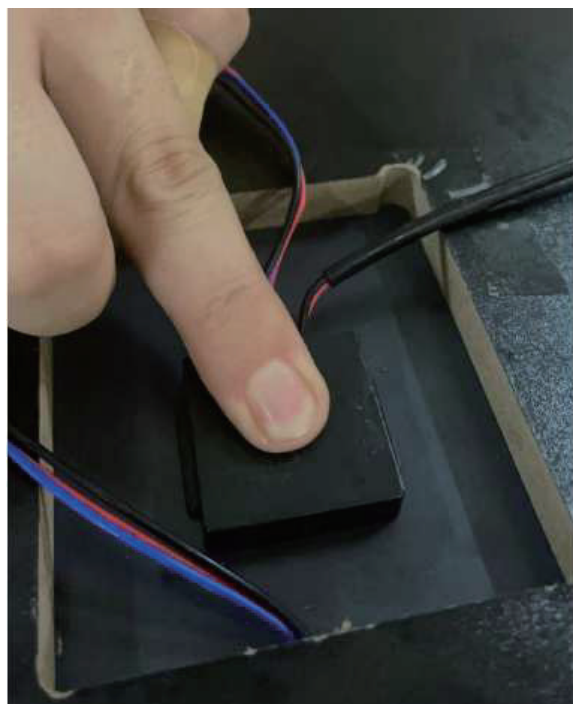
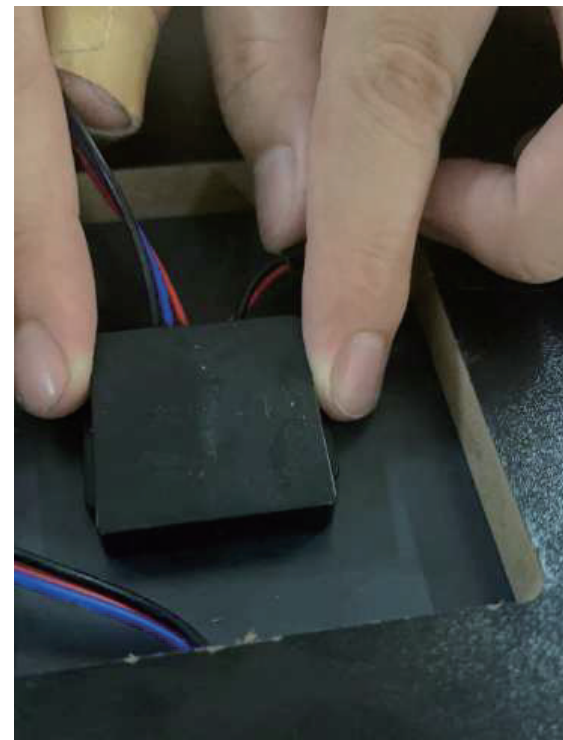
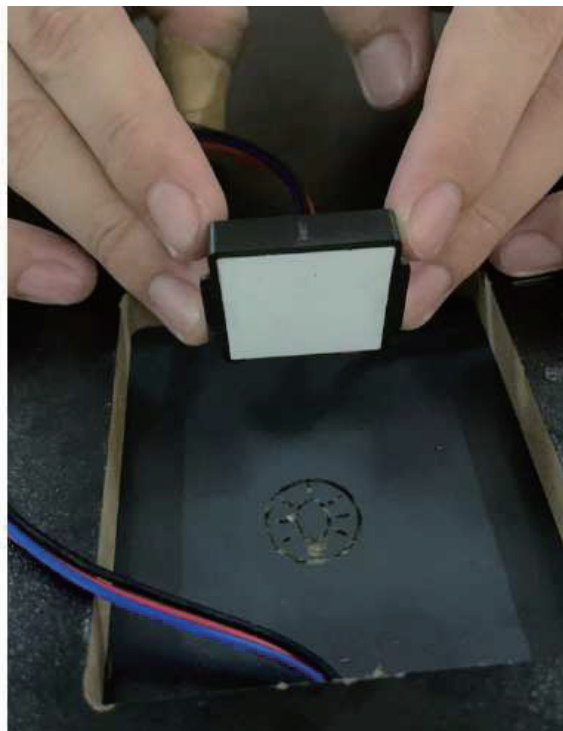
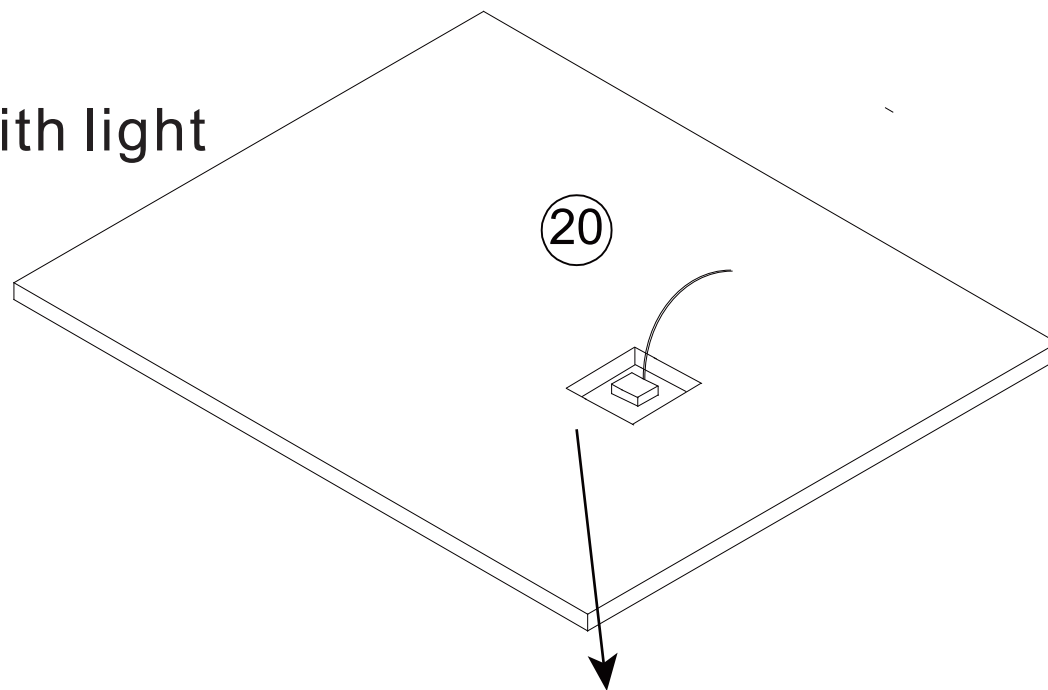
Step 15





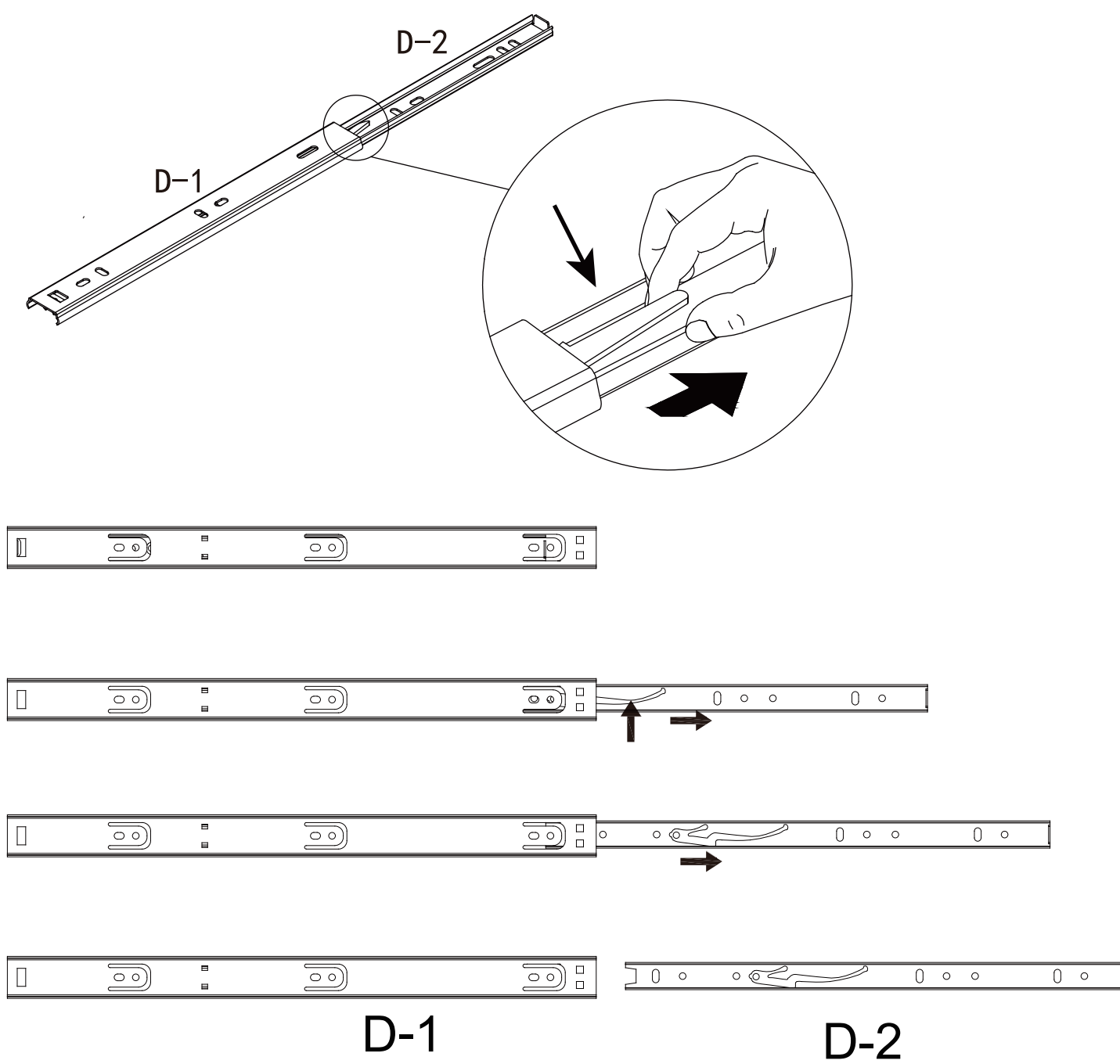
Step 17

For vanity table with light

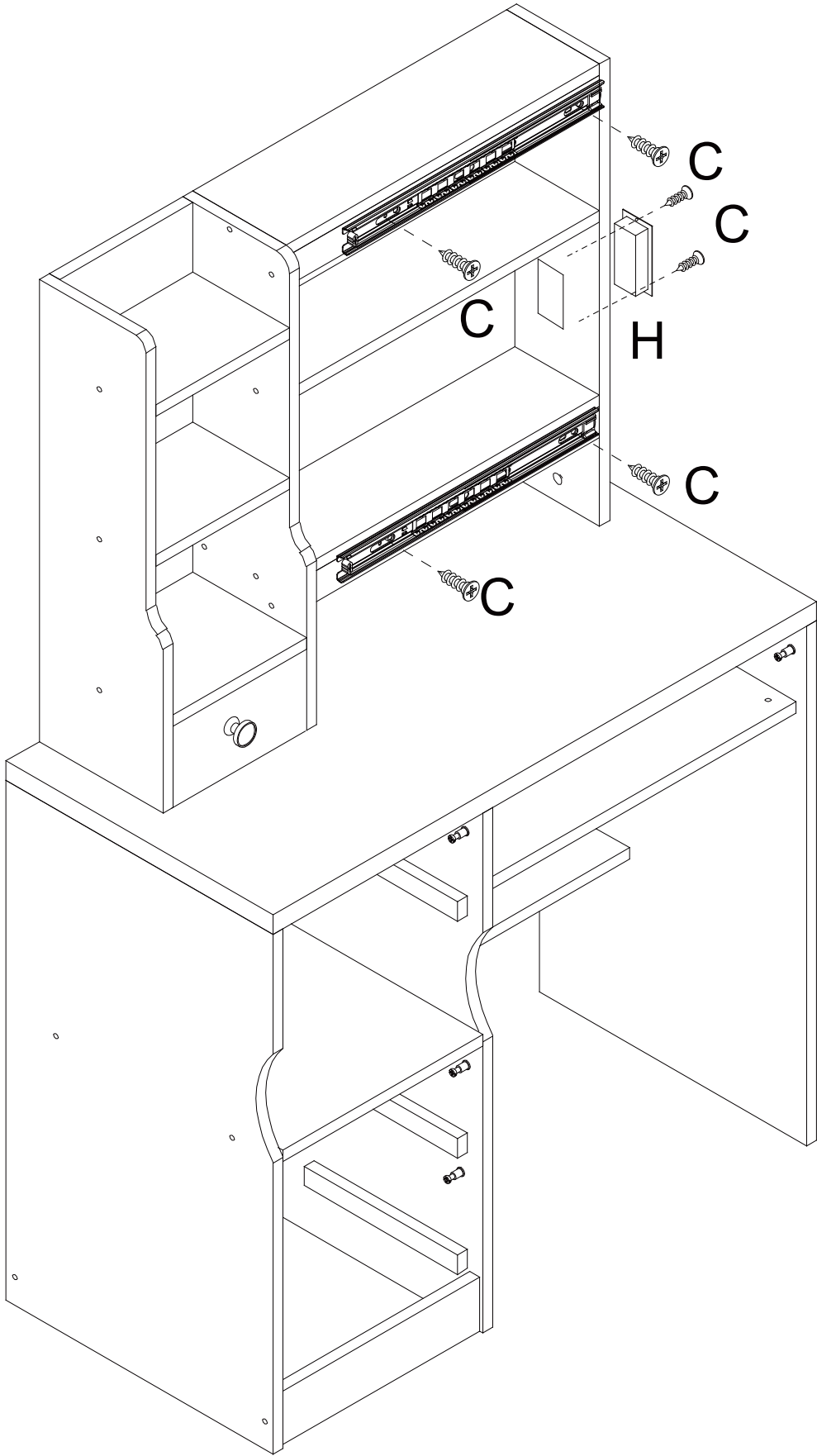


If your vanity table include a LED mirror light, please test the light in this step. Touch the switch botton on the mirror to turn on the mirror light, click the switch botton to change the color of the light, and long press the switch botton to adjust the brightness. If the switch botton is not sensitive, you can check whether the touch switch is tightly attached to the mirror back as shown in the diagram. If it is not tightly attached, please use your fingers to press the touch switch to the designated position and check if the connecting wire is OK.

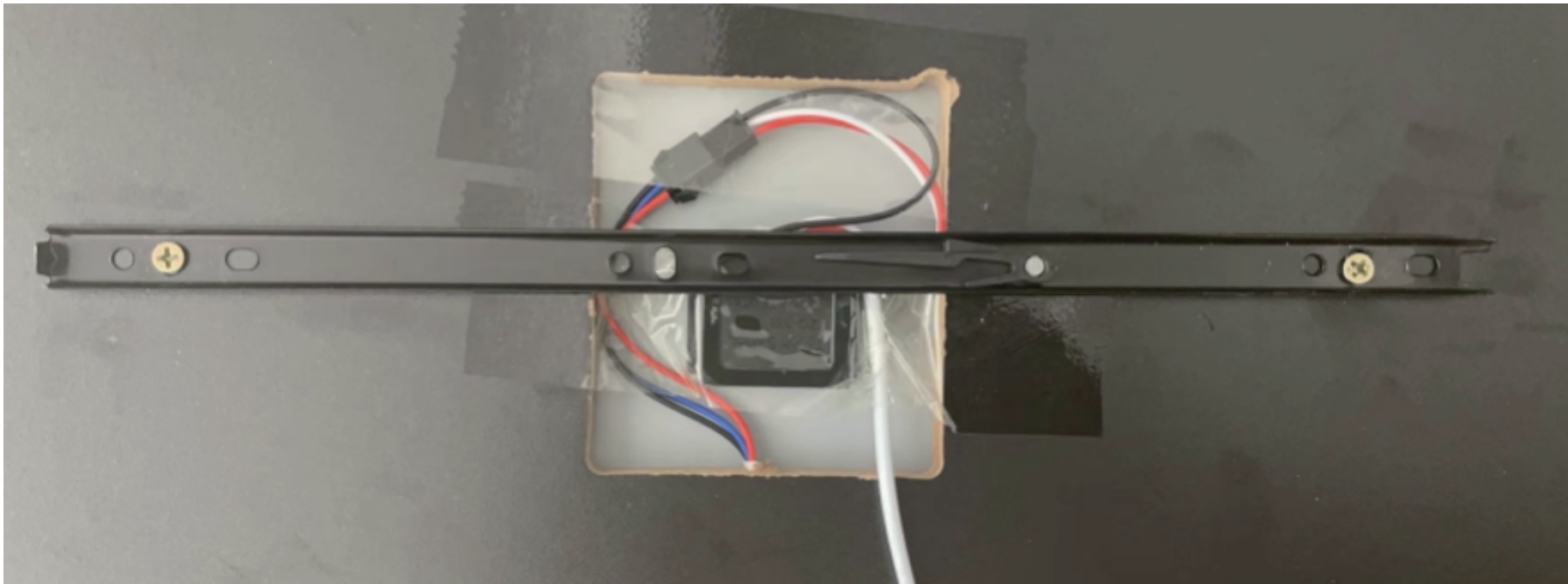
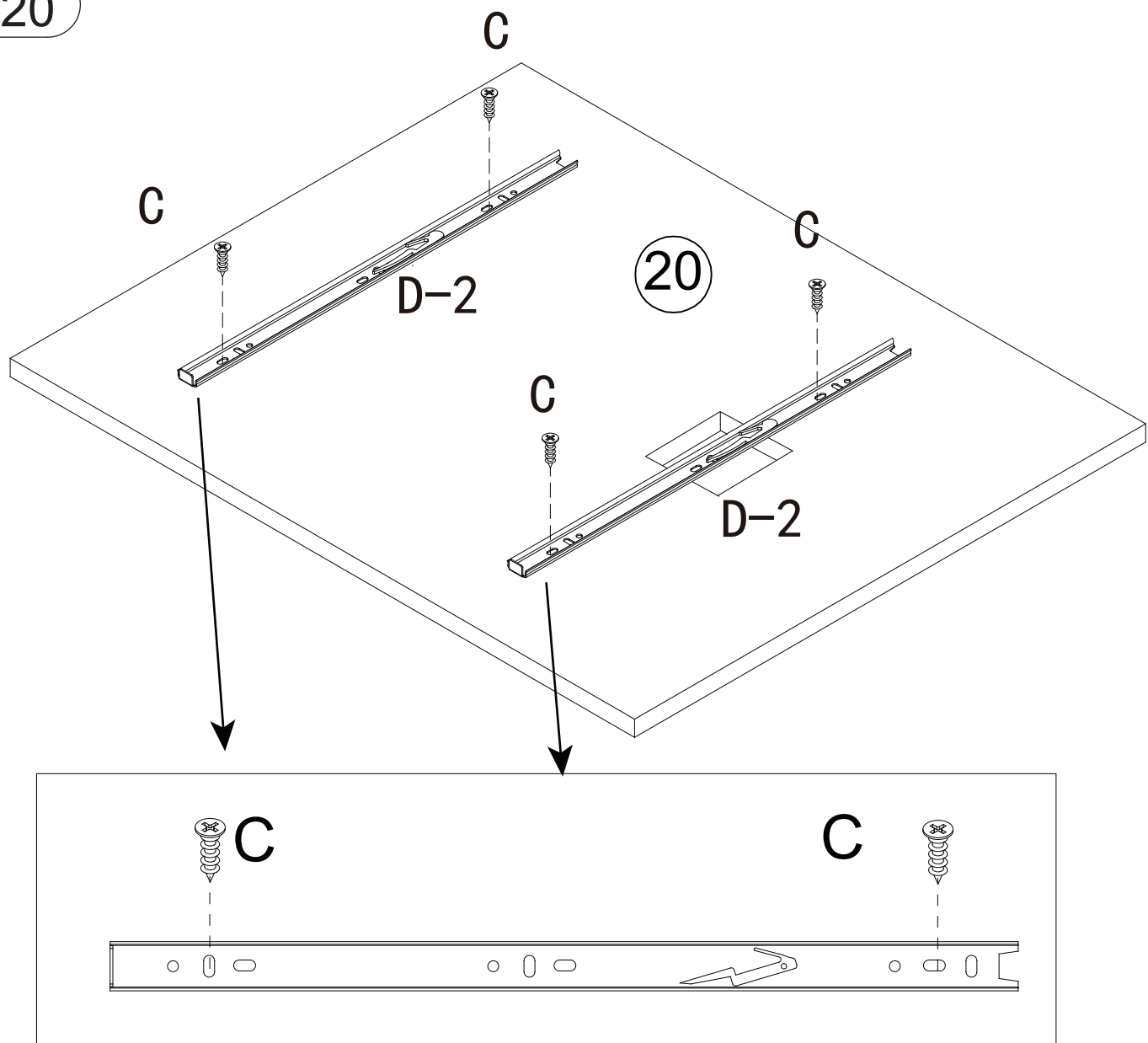
Step 18



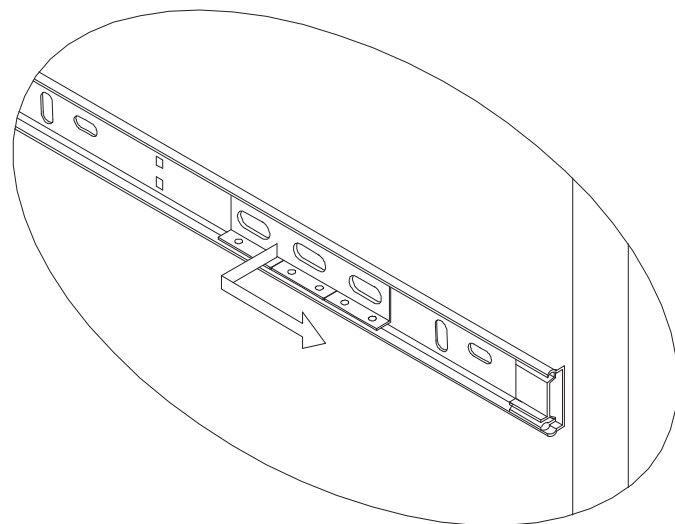
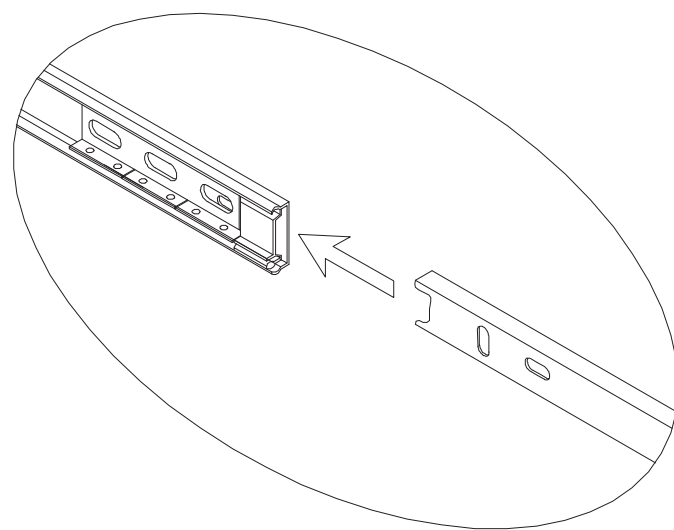
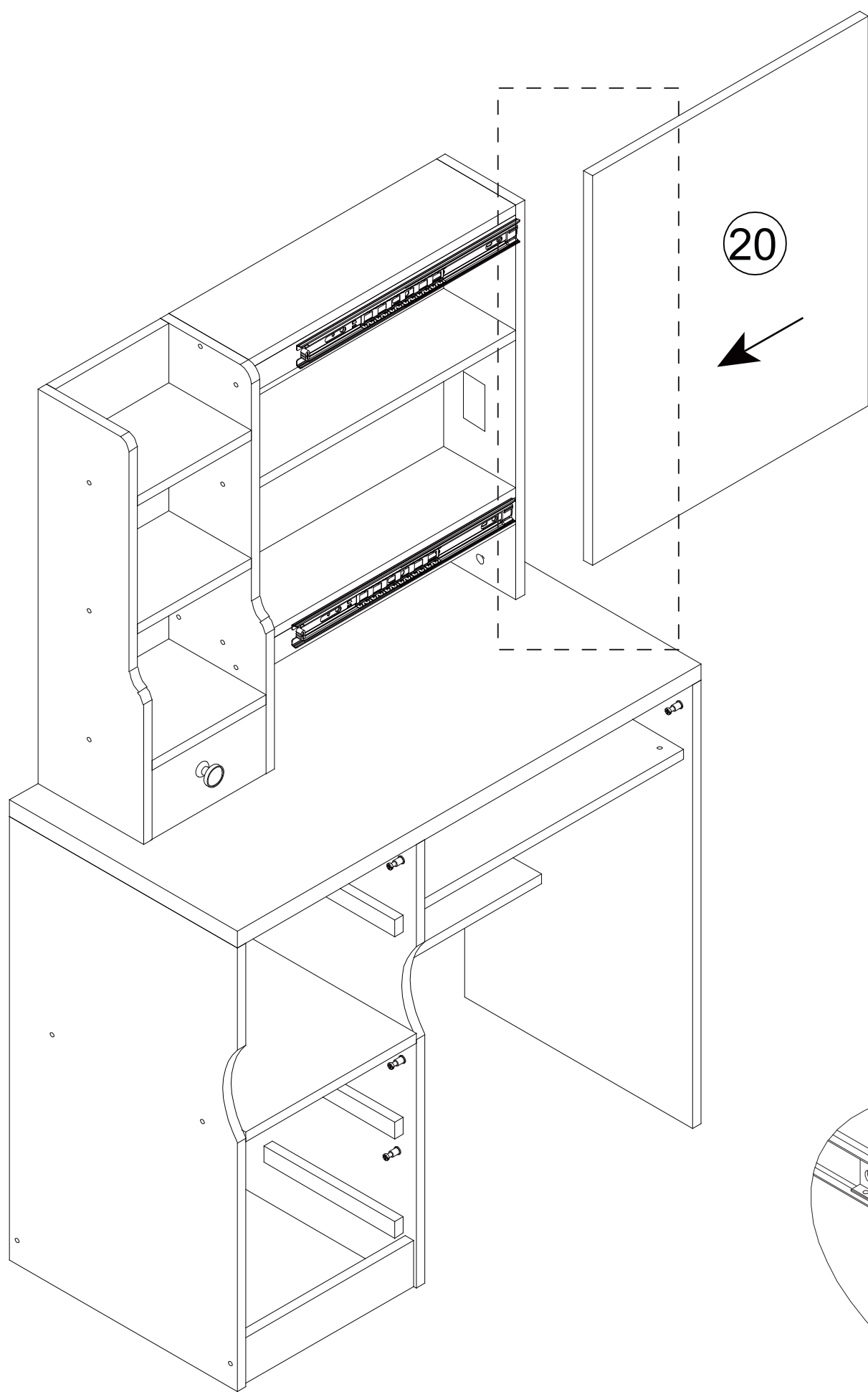
Step 19



Step 20

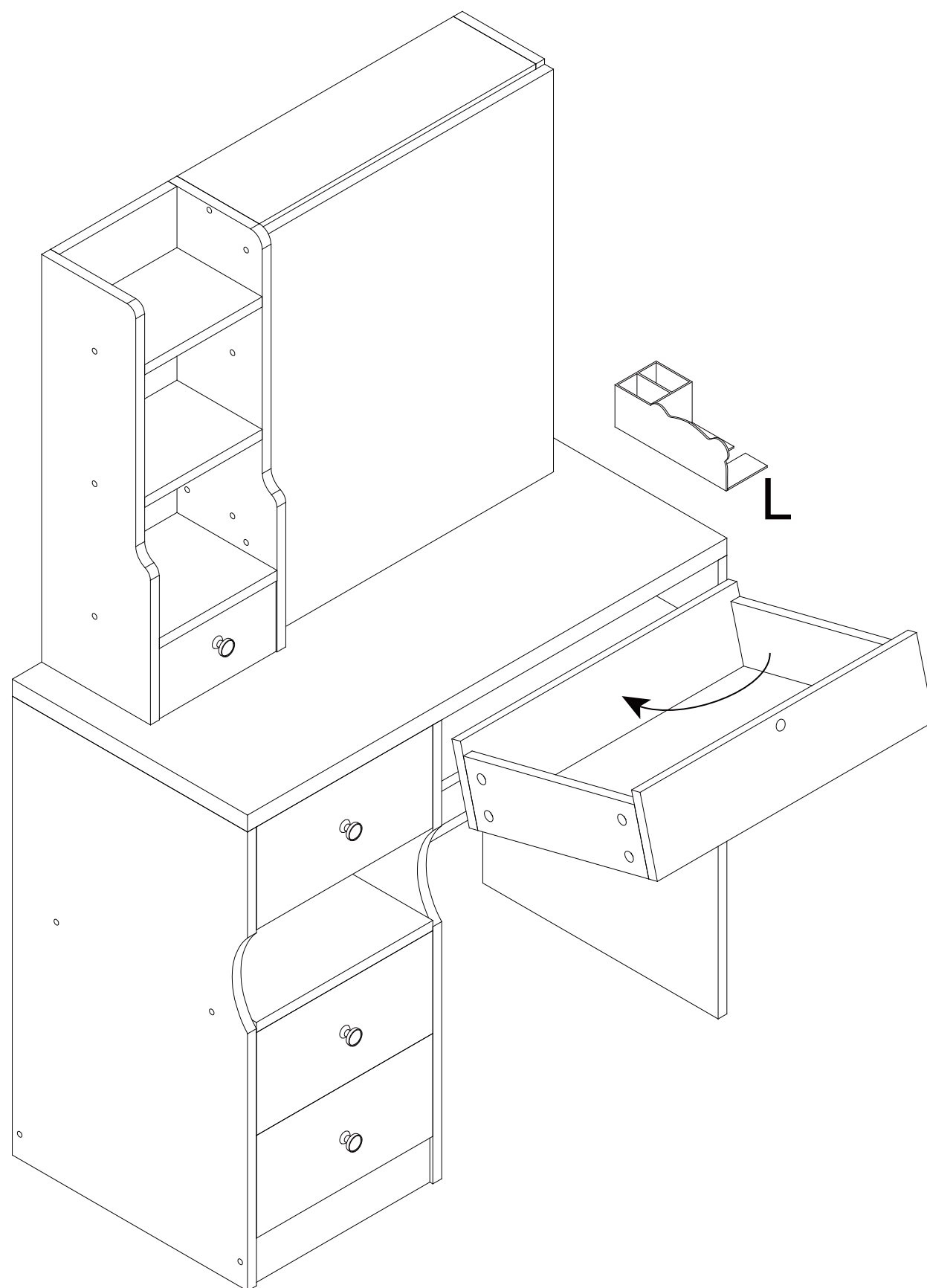


Step 21





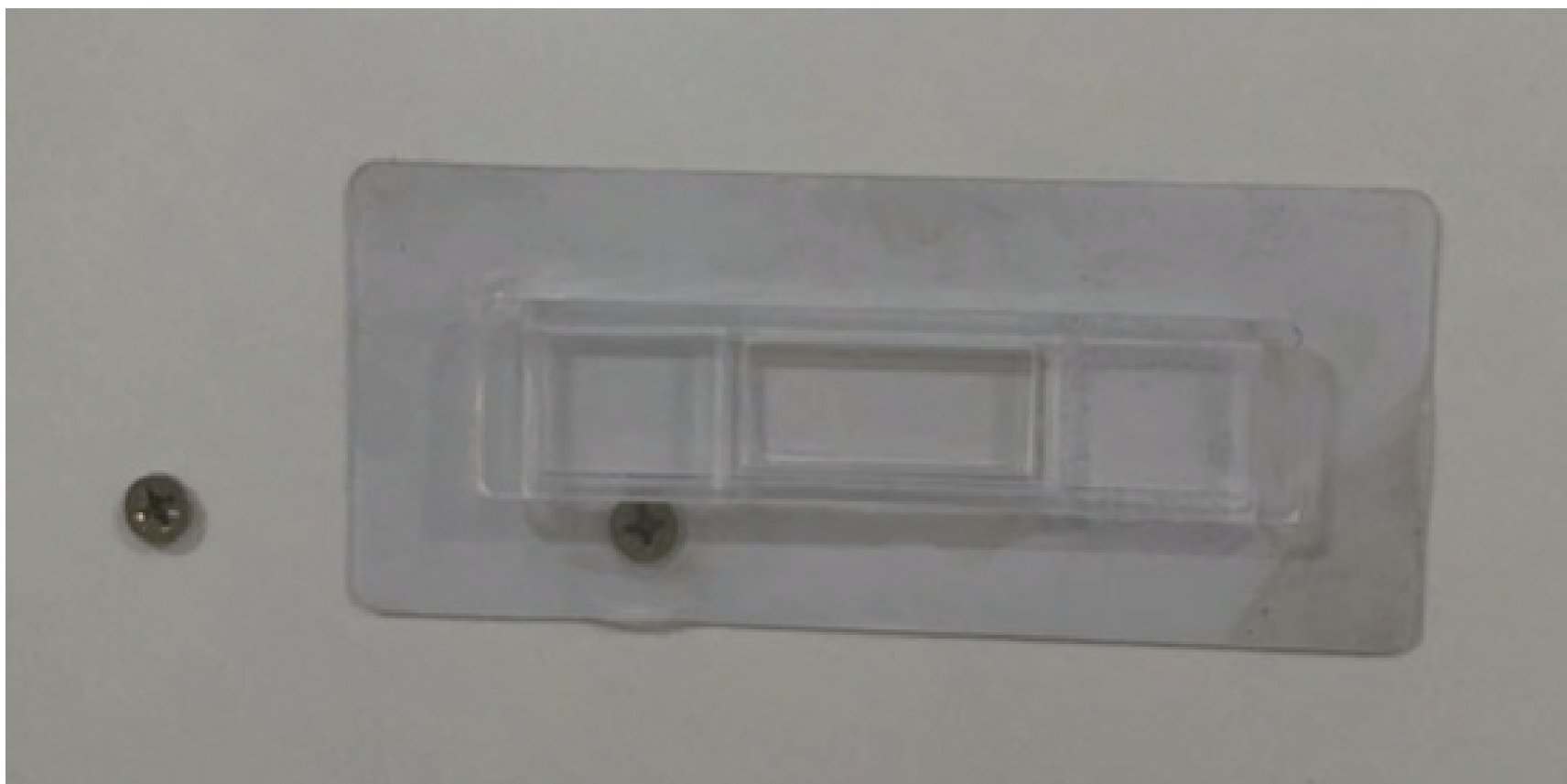
Step 23



Please note that when placing the drawer in, the drawer positioning pin will block the drawer. Therefore, please follow the diagram to first insert the inner edge of the drawer using a concave method, and then push the drawer flat.

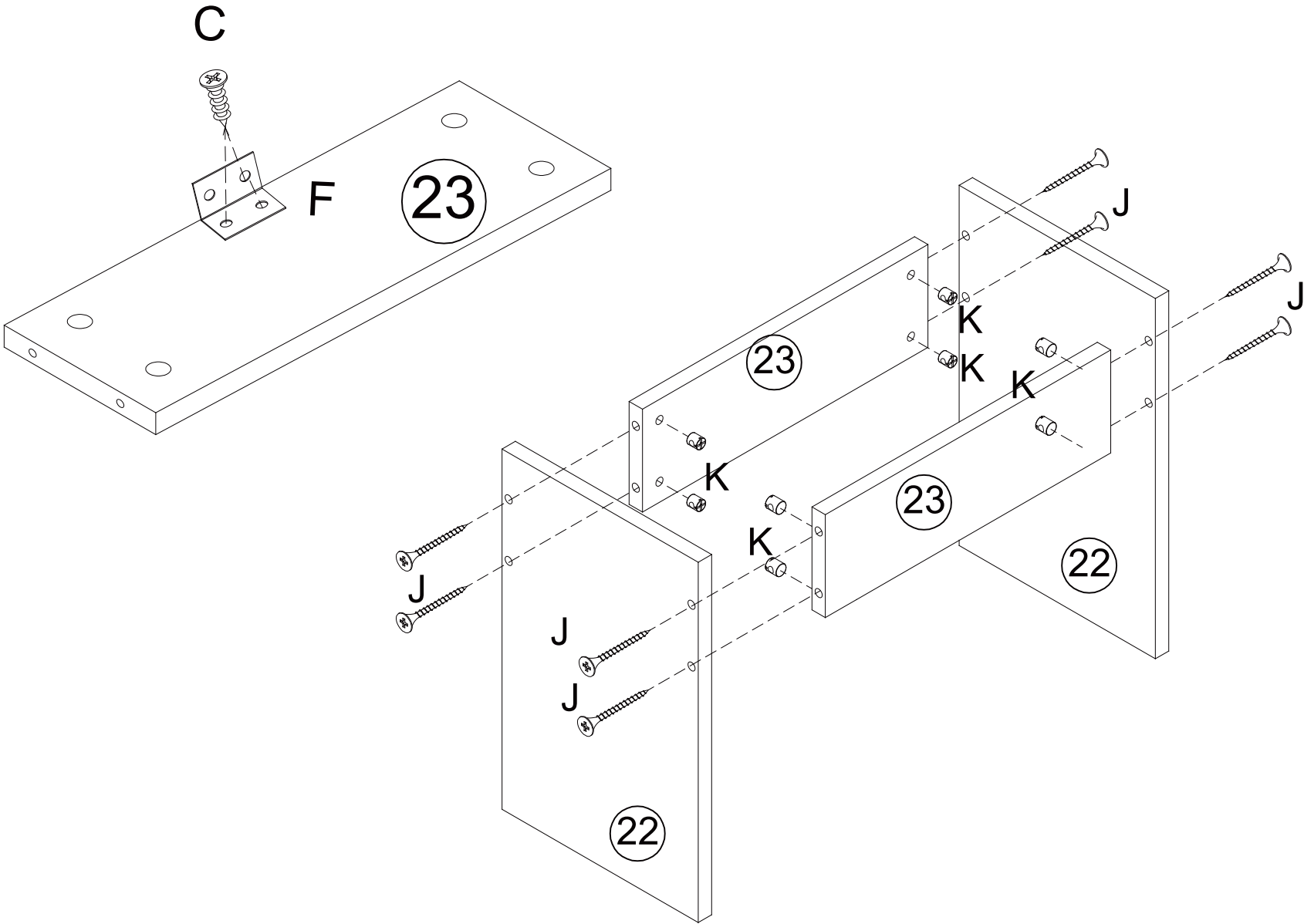


Only for vanity table with hair dryer
bracket and built-in socket



Only for vanity table with hair dryer
bracket and built-in socket

Step 24



Step 24

