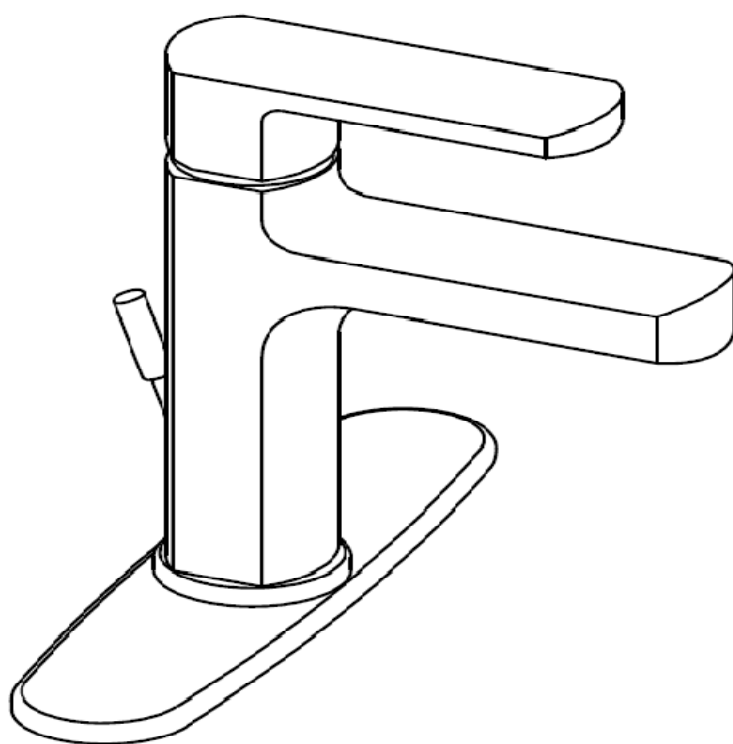


**ASSEMBLY INSTRUCTIONS**  
**INSTRUCCIONES PARA EL MONTAJE**  
**INSTRUCTIONS DE MONTAGE**

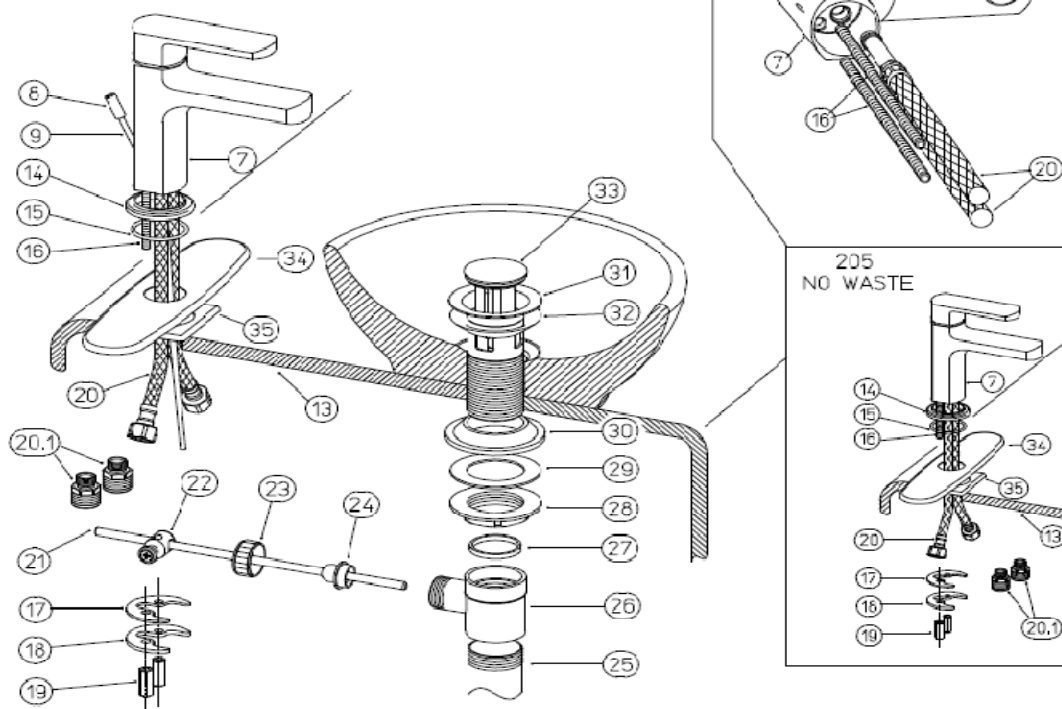
**NOVELLO 86-211**



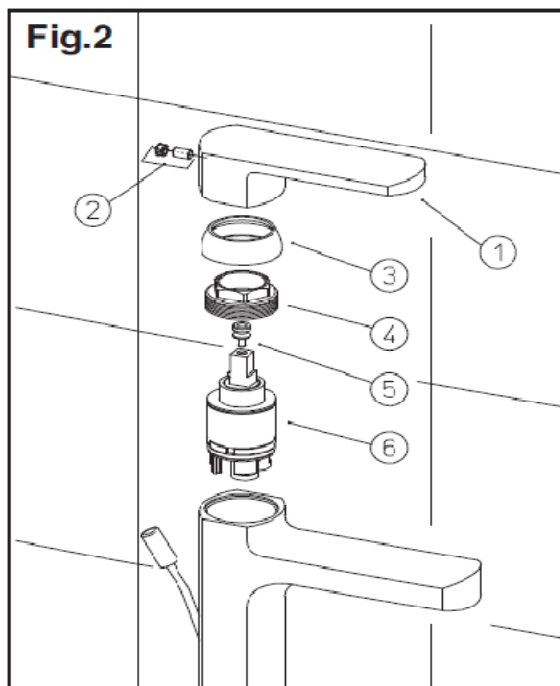
---

**NOVELLO 86-211**

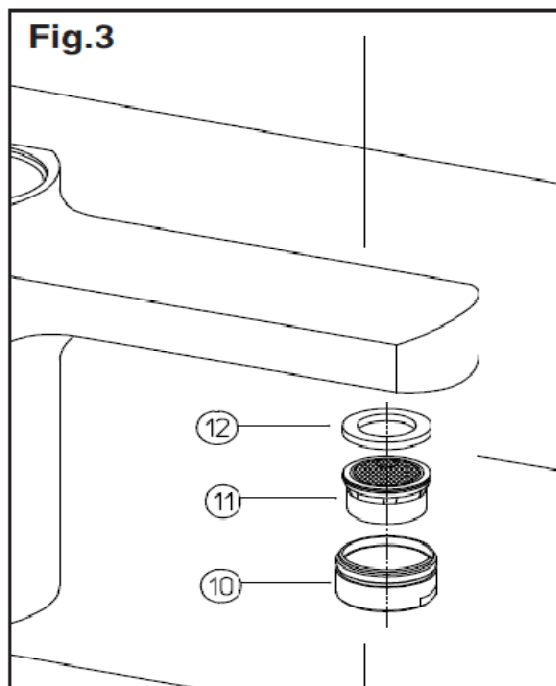
**Fig.1**



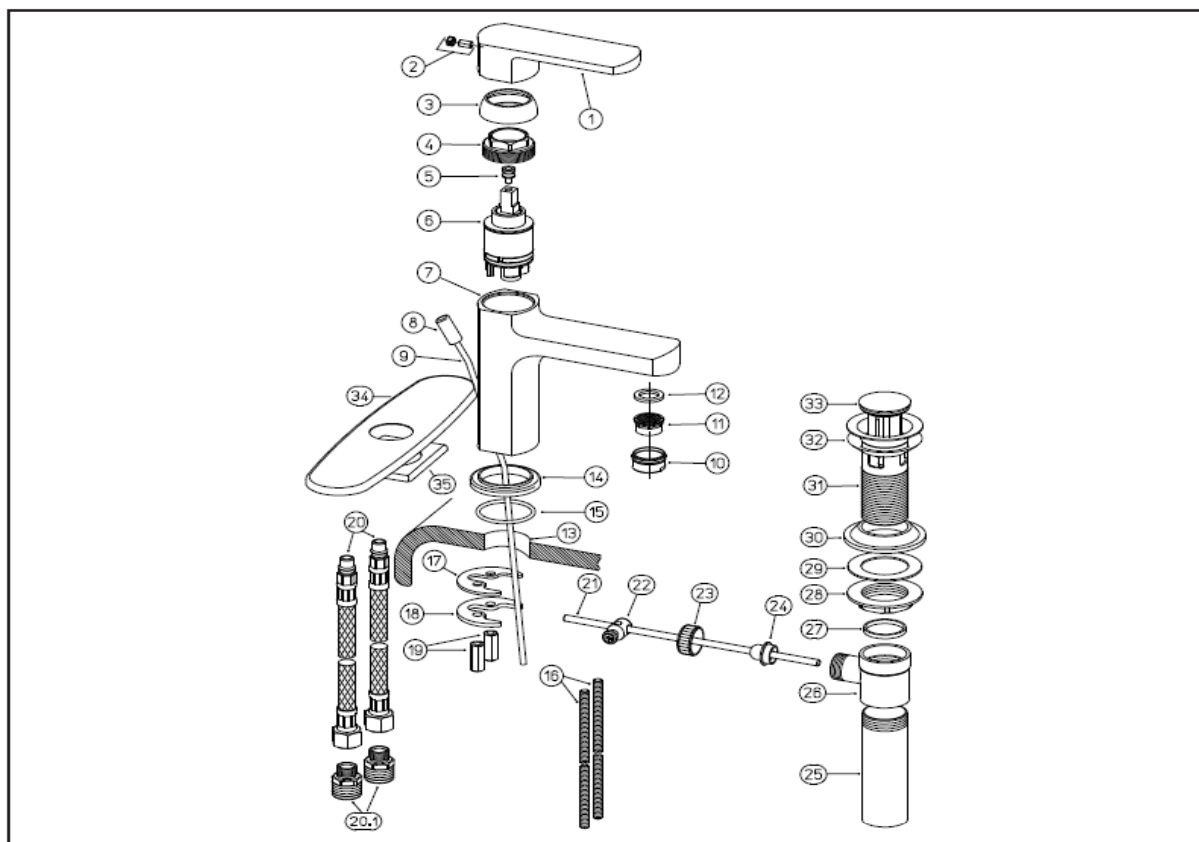
**Fig.2**



**Fig.3**



**NOVELLO 86-211**



## GB ASSEMBLY INSTRUCTIONS

Supply	Recommended	Max.	Min.
Hot water temperature	65 °C (~150F)	80 °C (~175F)	15 °C (~60F)
Operating pressure	3 BAR (~45PSI)	5 BAR (~75PSI)	0.5 BAR (~7PSI)

If operating pressures exceed 5 BAR (~75 PSI), the use of a pressure reducer is recommended. Before proceeding with the assembling, we advise to clean the hot and cold water tubes, in order to avoid that build-up of dirt could compromise the functioning of the faucet.

**For politics of mutual improvement, the supplier reserves the right to make revisions in product specifications without notice, therefore the Images and data contained in this Instruction sheet have to be considered as indicative.**

### FAUCET INSTALLATION (Fig.1)

Place the plate (34) onto the hole of the basin placing the plastic sheet (35) in between. Assemble the threaded pins (16) and the supply tubes (20) in the faucet body (7). Insert the base ring (14) and the o-ring (15), place everything in the hole of the sanitary (13). Verify the correct position of the o-ring (15). Slip the C-washer (17) and the flange (18) in the threaded pins (16), then fix the faucet with the nuts (19). Connect the supply tubes (20): the left one to the hot water supply and the right one to the cold water supply. Use the provided nipples (20.1) if needed. Open the water supply and verify both the correct functioning of the faucet and the sealing of all the parts.

### MOUNTING THE DRAIN (Fig.1) (only for art.211)

Insert the drain (31) with the tapered seal (32) in the waste hole (if necessary use sealant between drain and ceramic) then fix using the nut (28) placing the washer (30) and the flange (29) in between. Screw the vertical sleeve (25) to the waste body (26) and all this to the drain (31), placing the washer (27) in between. Place the

horizontal rod (21) positioning the piece (24) as shown in the figure, then fix with the nut (23). Insert the waste rod (9) with knob (8) in its proper hole of the faucet, connect it to the drain rod through the clamp (22) then regulate the run of the drain cap (33).

## MAINTENANCE AND TECHNICAL-PRACTICAL SUGGESTIONS

### REPLACEMENT OF THE CARTRIDGE

#### (shut off the main water supply) (Fig.2)

Take out the cover and the grub screw (2), take out the lever (1), unscrew the cap (3) and the locking nut (4) then take out the cartridge (6). Unscrew the lever holder (5) and assemble it in the new cartridge, proceed in reverse order to assemble, mind to clean the surfaces in contact with the sealing washers. Close the nut (4) in such a way to grant the sealing and in the meantime to allow that the handle turns smoothly.

### CLEANING THE AERATOR (Fig.3)

It is advisable to clean the aerator periodically, in order to avoid build-up of dirt and limestone, which in time could gradually limit the water flow. To disassemble the aerator (10), unscrew it and clean the filter (11) from all impurities, reassemble by proceeding in the reverse order making sure the gasket (12) is correctly placed.

### MAINTENANCE OF THE SURFACES

During the cleaning, the surface of the faucet has to be cold (as hot speeds up the wearing out of the surface). Make sure that cleaning products do not contain acids or corrosive substances. The faucet has to be daily dried with a soft cloth. Avoid steel wool, abrasive sponges or similar. Soon after cleaning, wash away the residue of cleaning lotions with cold water. Damages to faucets following from a not appropriate treatment will invalidate your guarantee.