

Toilet Seat Installation



Bolt
(2x)



Mounting
Tray
(2x)



Non-Skid
Rubber Pad
(2x)



Self-Aligning
Nut (2x)

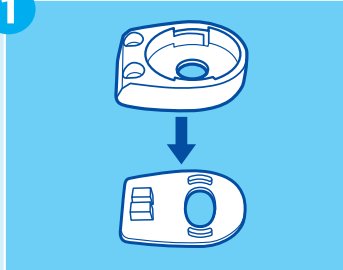
PARTS LIST

TOOLS NEEDED



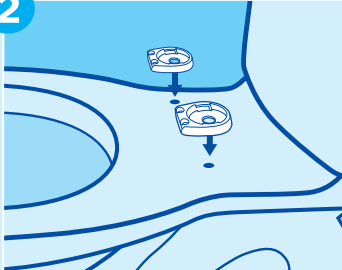
Screwdriver
(Common or Phillip's Head)

1



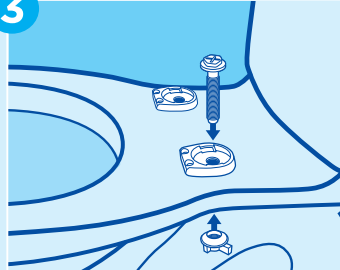
Insert Rubber Pads into the bottom of the Mounting Trays.

2



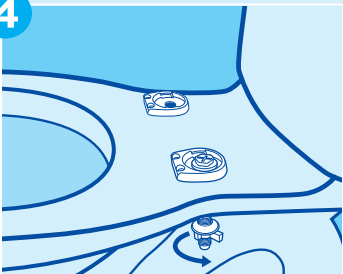
Place the Mounting Trays over the holes on the bowl.

3



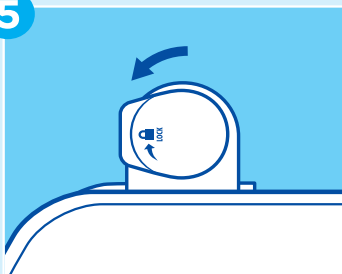
Slide the Bolt into the Mounting Tray, through the toilet, and into the Self-Aligning Nut below.

4



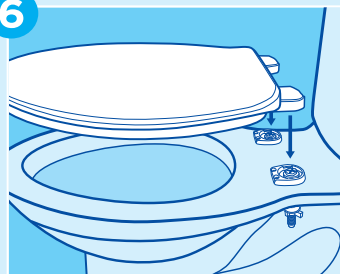
Secure the Self-Aligning Nut to Bolt by turning it clockwise. Finger tighten only.

5



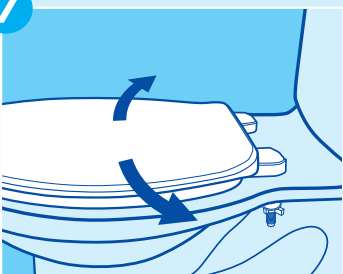
Be sure the Dials on the Toilet Seat are in the Unlocked position.

6



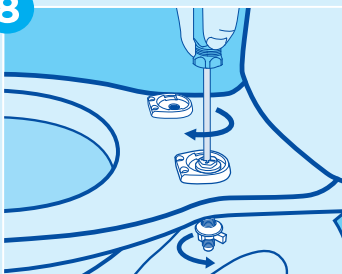
Place the Toilet Seat over the Toilet and align the Dials over the Mounting Trays. Then lower into place.

7



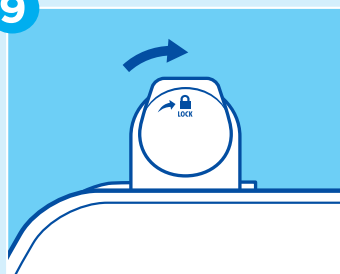
Check alignment and fit of the toilet seat. Carefully lift the seat off of the Mounting Trays.

8



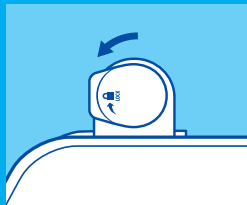
Tighten the Bolts securely with a flat head screwdriver.

9

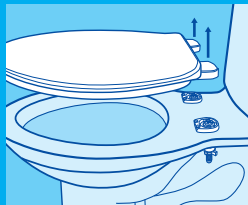


Place the toilet seat back onto the Mounting Trays. Turn the Dials to the right to lock the toilet seat in position.

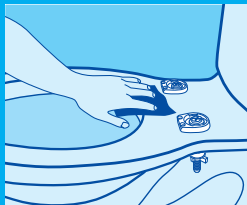
How to Clean



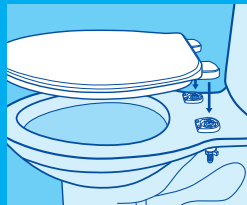
1. Turn the Dials to the left to the Unlocked position.



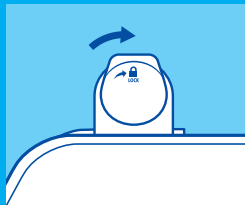
2. Gently lift up the toilet seat.



3. Use a soft damp cloth to wipe area.



4. When surface is clean, align the toilet seat Dials over the Mounting Trays and lower into place.

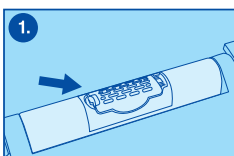


5. Turn Dials to the right to lock toilet into position.

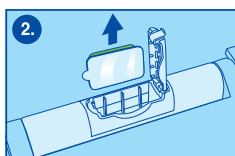
Stay Fresh™ Pod Installation

Use Instructions:
Tighten nuts again after seat has been in use for several weeks.

Care Instructions:
Clean with soft, damp cloth using mild detergent.
Do not use abrasive cleaners.



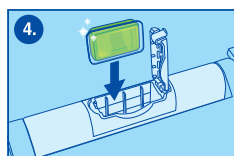
1. Locate scent housing in hinge of Stay Fresh™ Toilet Seat. Push end tab inward to open door.



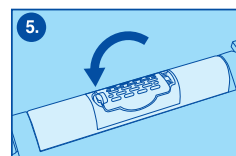
2. Remove the Stay Fresh™ Pod from the scent housing in the hinge.



3. Remove foil backing from Stay Fresh™ Pod. DO NOT remove or puncture clear covering.



4. Insert new Stay Fresh™ Pod with clear covering facing toilet seat.



5. Close housing door until end tab snaps into place.

Replace after 30 days or when liquid has dissolved. Refill Stay Fresh™ Pods sold separately.