



Zoom & ZT Bagger

Owner/Operator Manual

Models

815134 – 34" Bagger
(SN 00101 +)

815142 – 42" Bagger
(SN 00101 +)

815150 – 50" Bagger
(SN 00101 +)



TABLE OF CONTENTS

SAFETY	3	STORAGE	17
ASSEMBLY	8	TROUBLESHOOTING	17
REMOVAL	15	SPECIFICATIONS	17
OPERATION	15	PARTS LIST	18
MAINTENANCE	16	WARRANTY	23

INTRODUCTION

THE MANUAL

Before operation of unit, carefully and completely read this Manual and the unit's Owner/Operator Manual. The contents will provide you with an understanding of safety instructions and controls during normal operation and maintenance.

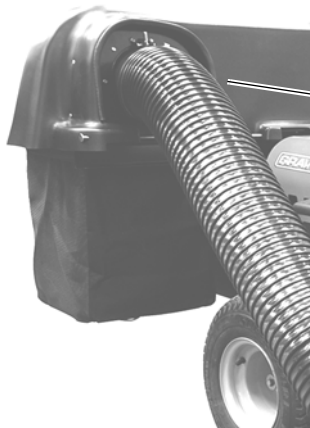
All reference to left, right, front, or rear are given from operator sitting in operation position and facing the direction of forward travel.

MODEL AND SERIAL NUMBERS

Transfer model & serial number label from product registration here.

When ordering replacement parts or making service inquiries, know the Model and Serial numbers of your unit.

Numbers are located on the product registration form in the unit literature package. They are printed on a serial number label, located on the frame of your unit.



Serial Number Label

Figure 1

- Record Unit Model and Serial numbers here.

PRODUCT REGISTRATION

The Ariens/Gravely dealer must register the product at the time of purchase. Registering the product will help the company process warranty claims or contact you with the latest service information. All claims meeting requirements during the limited warranty period will be honored, whether or not the product registration card is returned. Keep a proof of purchase if you do not register your unit.

Customer Note: If the dealer does not register your product, please fill out, sign, and return the product registration card to Ariens or go to www.ariens.com or www.gravely.com.

UNAUTHORIZED REPLACEMENT PARTS

Use only Ariens/Gravely replacement parts. The replacement of any part on this vehicle with anything other than an Ariens/Gravely authorized replacement part may adversely affect the performance, durability, or safety of this unit and may void the warranty.

Ariens/Gravely disclaims liability for any claims or damages, whether warranty, property damage, personal injury or death arising out of the use of unauthorized replacement parts.

DISCLAIMER

Ariens/Gravely reserves the right to discontinue, make changes to, and add improvements upon its products at any time without public notice or obligation. The descriptions and specifications contained in this manual were in effect at printing. Equipment described within this manual may be optional. Some illustrations may not be applicable to your unit.

DELIVERY

Customer Note: If you have purchased this product without complete assembly and instruction by your retailer, it is your responsibility to:

1. Read and understand all assembly instructions in this manual. If you do not understand or have difficulty following the instructions, contact your nearest Ariens/Gravely Dealer for assistance. Make sure all assembly has been properly completed and safety interlock system works properly.

NOTE: To locate your nearest Ariens Dealer, go to www.ariens.com on the internet. To locate your nearest Gravely Dealer, go to www.gravely.com on the internet.



WARNING: Improper assembly or adjustments can cause serious injury.

2. Understand all Safety Precautions provided in the manuals.

SAFETY

SAFETY ALERTS



Look for these symbols to point out important safety precautions. They mean:

Attention!



Personal Safety Is Involved!
Become Alert!
Obey The Message!

The safety alert symbols above and signal words below are used on decals and in this manual.

Read and understand all safety messages.



DANGER: IMMINENTLY HAZARDOUS SITUATION! If not avoided, WILL RESULT in death or serious injury.



WARNING: POTENTIALLY HAZARDOUS SITUATION! If not avoided, COULD RESULT in death or serious injury.



CAUTION: POTENTIALLY HAZARDOUS SITUATION! If not avoided, MAY RESULT in minor or moderate injury. It may also be used to alert against unsafe practices.

NOTATIONS

NOTE: General reference information for proper operation and maintenance practices.

IMPORTANT: Specific procedures or information required to prevent damage to unit or attachment.

PRACTICES AND LAWS

Practice usual and customary safe working precautions, for the benefit of yourself and others. Understand and follow all safety messages. Be alert to unsafe conditions and the possibility of minor, moderate, or serious injury or death. Learn applicable rules and laws in your area. Always follow the practices set forth in this manual.

3. Review control functions and operation of the unit. Do not operate unit unless all controls function as described in this manual.
4. Review recommended lubrication, maintenance and adjustments.
5. Fill out a Product Registration Card and return the card to the Ariens Company or go to www.ariens.com or www.gravely.com.

REQUIRED OPERATOR TRAINING

Original purchaser of this unit was instructed by the seller on safe and proper operation. If unit is to be used by someone other than original purchaser; loaned, rented or sold, ALWAYS provide this manual and any needed safety training before operation.

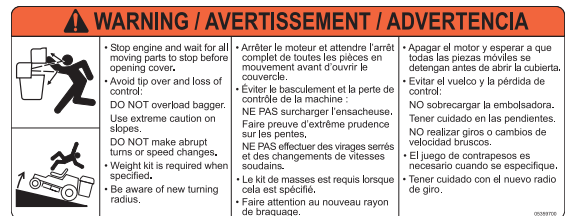


Figure 2

1. WARNING!



Stop engine and wait for all moving parts to stop before opening cover.



Avoid tip over and loss of control:

DO NOT overload bagger.

Use extreme caution on slopes.

DO NOT make abrupt turns or speed changes.

- Weight kit is required when using bagger.
- Be aware of new turning radius.

2. CAUTION!

- Stop Engine Before Removing Tube, Boot, Or Placing Hand Inside.

SAFETY RULES



WARNING: This cutting machine is capable of amputating hands and feet and throwing objects. Failure to observe the following safety instructions could result in serious injury or death.

The following safety instructions are based on the B71.1 specifications of the American National Standards Institute and ISO 5395 in effect at the time of production.

Training

Read, understand, and follow all instructions on the machine and in this manual before starting.

Be sure the area is clear of bystanders and pets before operating. Stop machine if anyone enters the area.

Improper use of power equipment can cause serious permanent injury or death to the operator or a bystander.

Understand:

- How to operate all controls
- The functions of all controls
- How to STOP in an emergency
- Braking and steering characteristics
- Turning radius and clearances

If the operator or the mechanic cannot read the manual, it is the owner's responsibility to explain it to them.

ALWAYS train any inexperienced operators and require them to read and understand all manuals and decals.

Only allow responsible adults, who are familiar with the instructions, to operate this machine.

Only the operator can prevent and is responsible for accidents or injuries occurring to themselves, other people or property.

Operator Age

DO NOT allow children under the age of 18 to operate any outdoor power equipment.

Local regulations may restrict the age of the operator.

Data indicates operators age 60 years and above are involved in a large percentage of riding mower-related injuries.

These operators should evaluate their ability to operate the riding mower safely enough to protect themselves and others from serious injury.

Children

Tragic accidents can occur if the operator is not alert to the presence of children. Children are often attracted to the machine and the mowing activity. NEVER assume that children will remain where you last saw them.

Be alert and turn machine off if a child enters the area.

Before and while backing, look behind and down for small children.

NEVER carry children, even with the blade(s) shut off. They may fall off and be seriously injured or interfere with safe machine operation. Children who have been given rides in the past may suddenly appear in the mowing area for another ride and be run over or backed over by the machine.

NEVER allow children to operate the machine.

Use extreme care when approaching blind corners, shrubs, trees or other objects that may block your view of a child.

Keep children out of the mowing area and in the watchful care of a responsible adult other than the operator.

Personal Protection

DO NOT wear loose clothing or jewelry and tie back hair that may get caught in rotating parts.

Wear adequate outer garments.

NEVER wear open sandals or canvas shoes during operation. Wear adequate safety gear, protective gloves and footwear.

Wear proper footwear to improve footing on slippery surfaces.

ALWAYS wear eye and ear protection when operating machine.

Before Operating

Installing the blower assembly on your mower requires the removal of the discharge chute and belt guard. Retain discharge chute, discharge chute hardware, belt guard, and belt guard hardware in a safe location and reinstall whenever operating unit without the blower assembly. DO NOT operate mower unless guards are in place or blower assembly and entire bagger are attached.

NEVER operate bagger if the unit's safety interlock system is not working properly.
Ensure that tires are inflated to recommended pressure.
Always install counterweight before operating unit with bagger attached. Always remove counterweight when bagger is removed from the unit
Under normal usage the bag material is subject to deterioration and wear. Check frequently for wear and damage and replace if necessary.
Keep all nuts and bolts tight to be sure the equipment is in safe working condition.
Maintain the machine to be in compliance with the maintenance schedule.
Clean grass and debris from unit, especially from around muffler and engine, to help prevent fires.
Check parking brake operation frequently. Adjust and service as required.
Inspect unit before each use for missing or damaged decals and shields, correctly operating safety interlock system, and deterioration of grass catchers. Replace or repair as needed.
Ensure Safety Interlock System is functioning properly. DO NOT operate unit if safety interlock is damaged or disabled.
Start and operate unit only when seated in operator's position. Steering control levers must be in neutral, PTO disengaged and parking brake set when starting engine.
NEVER interfere with the intended function of a safety device or reduce the protection provided by a safety device. Check their proper operation regularly.
Keep machine free of grass, leaves or other debris build-up. Clean up oil or fuel spillage and remove any fuel-soaked debris.

Operation

Always be aware of maximum sweep of bagger when turning. Always allow adequate clearance between bagger, personnel and other objects when turning.
Do not operate machine without the entire grass catcher, discharge guard, rear guard, or other safety protective devices in place and working.
As grass catcher fills, be alert to changing unit stability and control.
Be sure the area is clear of bystanders before operating. Stop machine if anyone enters the area.
ALWAYS maintain unit in safe operating condition. Damaged or worn out muffler can cause fire or explosion.
This product is equipped with an internal combustion type engine. DO NOT use unit on or near any unimproved, forest-covered or brush-covered land unless exhaust system is equipped with a spark arrester meeting applicable local, state or federal laws. A spark arrester, if it is used, must be maintained in effective working order by operator.

DO NOT operate machine while feeling tired, ill or under the influence of alcohol or drugs.
DO NOT put hands or feet near rotating parts or under the machine. Keep clear of the discharge opening at all times.
DO NOT touch parts which are hot. Allow parts to cool.
DO NOT operate machine without the entire grass catcher, discharge guard or other safety devices in place and working.
ALWAYS keep hands and feet away from all pinch points.
Avoid slippery surfaces. ALWAYS be sure of your footing.
NEVER carry passengers.
NEVER direct discharged material toward anyone. Avoid discharging material against a wall or obstruction. Material may ricochet back toward the operator. Stop the blade(s) when crossing gravel surfaces.
NEVER engage PTO when attachment, including mower blades, is not in use. ALWAYS turn off power to attachment when not in active use such as traveling or crossing driveways.
ALWAYS disengage PTO, stop unit and engine, remove key, engage parking brake and allow moving parts to stop before leaving operator's position.
NEVER engage PTO while raising the attachment, including mower blades, or when attachment is in the raised position.
Keep safety devices or guards in place and functioning properly. NEVER modify or remove safety devices.
DO NOT mow in reverse unless absolutely necessary. ALWAYS look down and behind before and while backing.
Stop the engine (motor) and wait until the blade comes to a complete stop before cleaning the machine, removing grass catcher, or unclogging the discharge guard.
Slow down before turning.
If you strike a foreign object, stop and inspect the machine. Repair, if necessary, before restarting.
NEVER leave a running machine unattended. ALWAYS turn off blade(s), set parking brake, stop engine and remove key before dismounting.
Disengage blade(s) when not mowing. Shut off engine and wait for all parts to come to a complete stop before cleaning the machine, removing the grass catcher, or unclogging the discharge guard.
Know the weight of loads. Limit loads to those you can safely control and the unit can safely handle.

Operating Conditions
Lightning can cause severe injury or death. If lightning is seen or thunder is heard in the area, do not operate the machine, seek shelter.
ALWAYS check overhead and side clearances carefully before operation.
Watch for traffic when operating near or crossing roadways.
Clear the area of objects such as rocks, wire, toys, etc., which could be thrown by the blades.
Check for weak spots on docks, ramps or floors. Avoid uneven work areas and rough terrain. Stay alert for hidden hazards or traffic.
Use care when approaching blind corners, shrubs, trees or other objects that may obscure vision.
Dust, smoke, fog, etc. can reduce vision and cause an accident.
Operate machine only in daylight or good artificial light.

Slope Operation
Slopes are a major factor related to loss of control and tip-over accidents, which can result in severe injury or death. Operation on all slopes requires extra caution. If you cannot back up the slope or if you feel uneasy on it, DO NOT mow it.
DO NOT operate on slopes of more than 10°.
Mow up and down slopes, not across.
Watch for holes, ruts, bumps, rocks, or other hidden objects. Uneven terrain could overturn the machine. Tall grass can hide obstacles.
DO NOT mow on moist or wet grass. Tires may lose traction causing a loss of control.
Use extra care while operating machine with grass catchers or other attachments; they can affect the stability of the machine. DO NOT use on steep slopes.
Keep all movements on the slope <i>slow</i> and <i>gradual</i> . DO NOT make sudden changes in speed or direction, which could cause the machine to roll over.
Avoid starting, stopping, or turning on a slope. If the tires lose traction, disengage the blade(s) and proceed slowly straight down the slope.
Operation on slopes may lead to loss of steering control. When operating on slopes be prepared to react to an emergency situation: <ul style="list-style-type: none"> • Return steering levers to neutral position. • Immediately set parking brake. • Turn off PTO and engine.
DO NOT try to stabilize the machine by putting your foot on the ground.
DO NOT park on slopes unless necessary. When parking on slope ALWAYS chock or block wheels. ALWAYS set parking brake.
Choose a low ground speed so you will not have to stop or shift while on a slope.

DO NOT mow near drop-offs, ditches, or embankments. The machine could suddenly roll over if a wheel goes over the edge or if the edge caves in.
DO NOT bypass transmission or allow transmission to free-wheel when on a slope.

Fuel
To avoid personal injury or property damage, use extreme care in handling gasoline. Gasoline is extremely flammable and the vapors are explosive.
Ethanol blends must not exceed E10. Higher ethanol content may cause your machine to run hotter and damage your engine.
Replace fuel cap securely and clean up spilled fuel before starting engine.
Extinguish all cigarettes, cigars, pipes and other sources of ignition.
Use only an approved gasoline container.
NEVER store the machine or fuel container where there is an open flame, spark or pilot light such as on a water or space heater or other appliances.
NEVER fill containers inside a vehicle or on a truck or trailer bed with a plastic liner. ALWAYS place containers on the ground away from your vehicle before filling.
NEVER fuel the machine indoors.
NEVER remove gas cap or add fuel with the engine running. Allow engine to cool before fueling.
Fuel is highly flammable and its vapors are explosive. Handle with care. Use only an approved gasoline container with an appropriately-sized dispensing spout. NO smoking, NO sparks, NO flames.
Remove gas-powered equipment from the trailer and refuel it on the ground. If this is not possible, then refuel such equipment with a portable container, rather than from a gasoline dispenser nozzle.
Keep the nozzle in contact with the rim of the fuel tank or container opening at all times until the fueling is complete. DO NOT use a nozzle lock-open device.
NEVER overfill fuel tank. Replace gas cap and tighten securely.
If fuel is spilled on clothing, change clothing immediately.

Towing
Follow the manufacturer's recommendations for weight limits for towed equipment and towing on slopes.
NEVER allow children or others in or on towed equipment.
Tow only with a machine that has a hitch designed for towing. DO NOT attach towed equipment except at the hitch point.
On slopes, the weight of the towed equipment may cause loss of traction and loss of control.
Travel slowly and allow extra distance to stop.

Accessories

Follow the manufacturer's recommendation for wheel weights or counterweights

Check grass catcher components and the discharge guard frequently and replace with manufacturer's recommended parts, when necessary.

Use only Ariens Company-recommended attachments that are appropriate to your use and can be used safely in your application.

Batteries

Avoid electric shock. Objects contacting both battery terminals at the same time may result in injury and unit damage. DO NOT reverse battery connections.

Reverse connections may result in sparks which can cause serious injury. ALWAYS connect positive (+) lead of charger to positive (+) terminal, and negative (-) lead to negative (-) terminal.

ALWAYS disconnect negative (-) cable FIRST and positive (+) cable SECOND. ALWAYS connect positive (+) cable FIRST, and negative (-) cable SECOND.

Explosive gases from battery can cause death or serious injury. Poisonous battery fluid contains sulfuric acid and its contact with skin, eyes or clothing can cause severe chemical burns.

No flames, No sparks, No smoking near battery.

ALWAYS wear safety glasses and protective gear near battery. Use insulated tools.

ALWAYS keep batteries out of reach of children.

Battery posts, terminals and related accessories contain lead and lead compounds, chemicals known to the state of California to cause cancer and reproductive harm. Wash hands after handling.

Service

The use of non-genuine replacement parts or accessories could adversely affect machine operation and safety.

Any replacement bag should be checked to ensure compliance with the original manufacturer's recommendations or specifications.

Maintain or replace safety and instruction labels as necessary.

Keep unit free of debris. Clean up oil or fuel spills.

ALWAYS block wheels and know all jack stands are strong and secure and will hold weight of unit during maintenance.

Release any pneumatic or hydraulic pressure from components slowly.

NEVER attempt to make any adjustments to unit while engine is running (except where specifically recommended). Stop engine, remove key and spark plug wire and wait for all moving parts to stop before servicing or cleaning.

Lower cutting deck unless a positive mechanical lock is used.

Allow engine to cool before servicing.

Moving parts can cut or amputate fingers or a hand. On multiblade mowers, rotation of one blade will cause all blades to rotate.

NEVER weld or straighten mower blades.

NEVER make adjustments or repairs with the engine running.

Mower blades are sharp. Wrap the blade or wear gloves, and use extra caution when servicing them.

ALWAYS keep body and hands away from pin holes or nozzles which eject hydraulic fluid under pressure.

ASSEMBLY



WARNING: AVOID INJURY. Read and understand the entire *Safety* section before proceeding.

UNPACKING UNIT

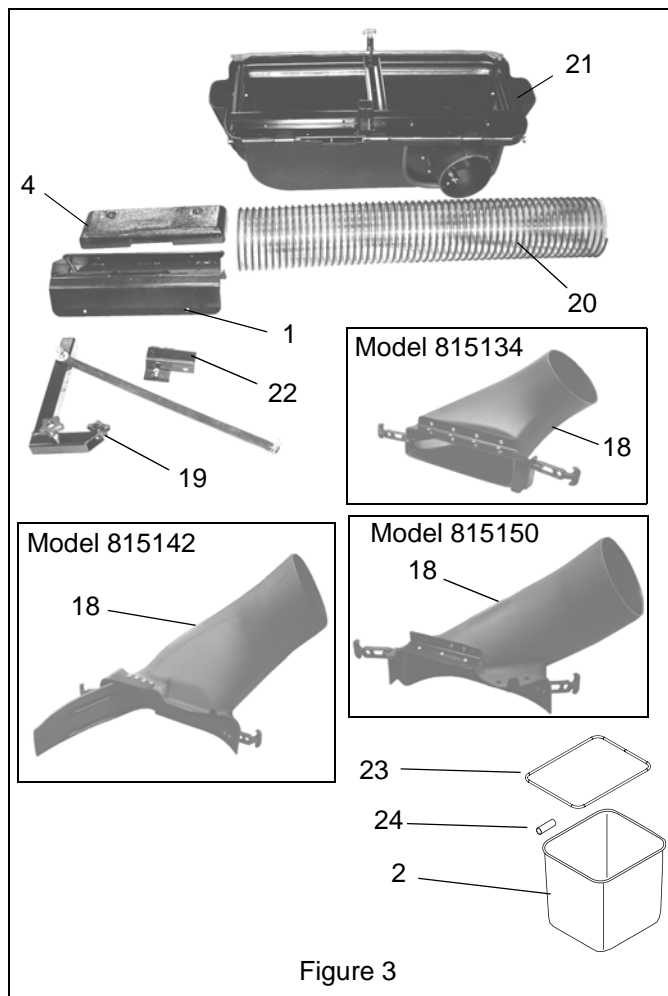
IMPORTANT: Remove contents from carton carefully. Place cover assembly on a flat piece of cardboard to avoid scratching it.

Package Contents:

Check the contents of your kit for the parts listed below and shown in Figures 3 – 6.

Item	Description	Qty	Part Number
1	Weldment Bagger Weight Tray	1	04215451
2	Mesh Bag	2	03862900
3	Grip, Adhesive	1	03833800
4	Cast Iron Weight	1	00172000
5	5/16 x 1" Round Head Square Neck Bolt	2	06216100
6	5/16-18 Nyloc Nut	2	06545400
7	3/8-16 x 3" Hex Bolt	2	05957800
8	3/8" Lock Washer	4	06308800
9	1/2 x 2" Round Head Square Neck Bolt	2	06200205
10	1/2" Nyloc Flange Nut	4	06500010
11	1/2" Push Nut	2	06500705
12	.515 x 1.625 x .250 Flat Steel Washer	6	06445000
13	.438 x 1.00 x .083 Flat Steel Washer	4	06435900
14	.390 x 1.5 x .125 Flat Steel Washer	2	06441700
15	.091 x 7.875 Locking Bow Tie Cotter Pin	4	06700201
16	Wing Knob	1	07500225
17	Studded Wing Knob	1	07500226
18	34" Boot Assembly (Model 815134)	1	51577500
	42" Boot Assembly (Model 815142)	1	51577600
	50" Boot Assembly (Model 815150)	1	51577700
19	L Bracket, Brace & Hardware	1	N/A
20	Bagger Hose (Model 815134)	1	04445600
	Bagger Hose (Models 815142, 150)		04222900
21	Hood Assembly	1	51577800

Item	Description	Qty	Part Number
22	Receiver & Hardware	1	N/A
23	Bag Frame	2	00663200
24	Plastic Tube, 3/8 x 1/2 x 3"	2	00677000
25	Footrest	1	04188353
26	Tube	2	04192901



INSTALL FRONT WEIGHT TRAY & COUNTERWEIGHT

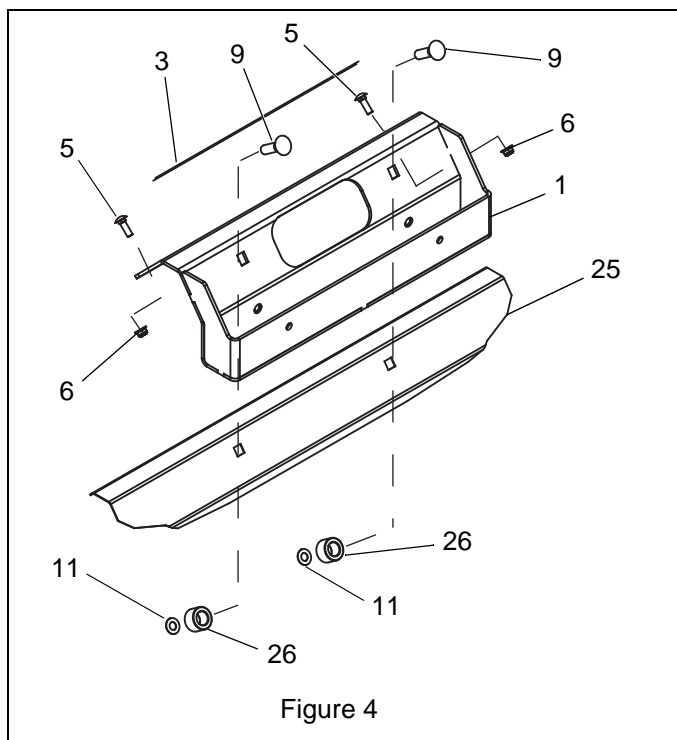
Ariens SN 030000 +

Ariens & Gravelly SN 029999 & Below



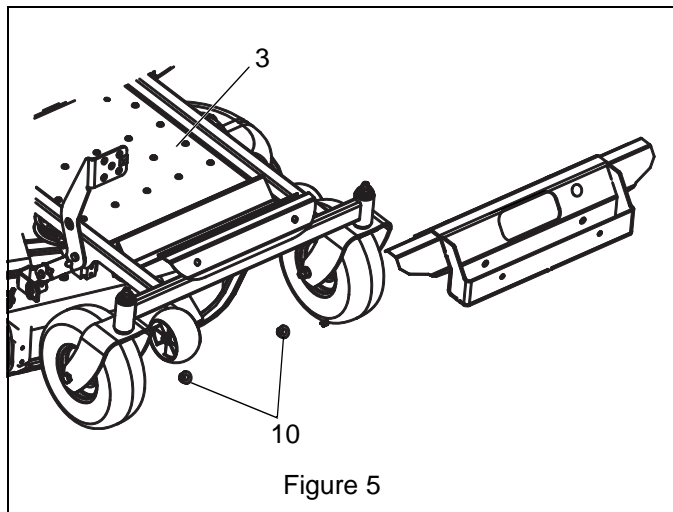
WARNING: ALWAYS install counterweight before operating unit with bagger attached. ALWAYS remove counterweight when bagger is removed from unit.

1. Remove the front footrest. There are two 1/2 x 1.75" and 5/16 x .75" round head square neck bolts that secure the footrest to the chassis. The 1/2 x 1.75" bolts and metal spacers are held on the footrest by two 1/2" push nuts. Twist or cut off the push nuts to remove. Save the spacers and discard all other hardware. See Figure 4.
2. Lay the footrest onto the back of the weight tray (similar profile). It may be helpful to have the weight tray laying upside down on the ground when mating it to the footrest. Install two 1/2 x 2" bolts (item 9) thru the front of the weight tray and footrest. Slide the two spacers (from step 1) over the bolts and secure with push nuts (item 11). Secure the push nuts as tight as possible. See Figure 4.

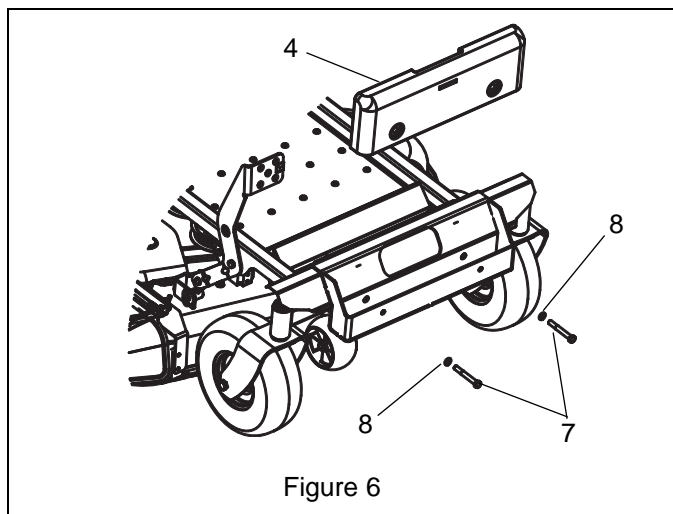


3. Place the footrest/weight tray assembly over the chassis. The two 1/2 x 2" bolts (item 9) will drop through the two holes in the chassis. It may be necessary to tilt the assembly back slightly to align the bolts with the holes. Secure with two 1/2" nyloc flange nuts (item 10). See Figure 5.

4. Install two 5/16 x 1" bolts (item 5) through the two holes on the footrest portion of the assembly. Secure with two 5/16 nyloc flange nuts. Adhere the grip adhesive (item 3) just above the two bolts (item 5) on the footrest. See Figure 5.



5. Place the cast iron weight (item 4) into the weight tray. Install two 3/8 x 3" hex bolts (item 7) and two 3/8" lock washers (item 8) through the front of the weight. There are two weld nuts on the back of the weight tray. Thread the bolts into the weld nuts and tighten until the lock washers engage. Do not overtighten the bolts or the tray will flex. The bolts are only installed to prevent the weights from falling out of the tray. See Figure 6.



Gravelly SN 030000 +

1. Remove the plastic caps over the caster hubs. Remove the front footrest. There are two 5/16 x .75" round head square neck bolts that secure the footrest to the chassis. Retain footrest, caps and hardware for use without the bagger.

2. Use the red footrest (item 25) that is included in the kit, and lay the footrest onto the back of the weight tray (similar profile). It may be helpful to have the weight tray laying upside down on the ground when mating it to the footrest. Install two 1/2 x 2" bolts (item 9) thru the front of the weight tray and footrest. Slide the two spacers (from step 1) over the bolts and secure with push nuts (item 11). Secure the push nuts as tight as possible. See Figure 4.
3. Place the footrest/weight tray assembly over the chassis. The two 1/2 x 2" bolts (item 9) will drop through the two holes in the chassis. It may be necessary to tilt the assembly back slightly to align the bolts with the holes. Secure with two 1/2" nyloc flange nuts (item 10). See Figure 5.
4. Install two 5/16 x 1" bolts (item 5) through the two holes on the footrest portion of the assembly. Secure with two 5/16 nyloc flange nuts. Adhere the grip adhesive (item 3) just above the two bolts (item 5) on the footrest. See Figure 4.
5. Place the cast iron weight (item 4) into the weight tray. Install two 3/8 x 3" hex bolts (item 7) and two 3/8" lock washers (item 8) through the front of the weight. There are two weld nuts on the back of the weight tray. Thread the bolts into the weld nuts and tighten until the lock washers engage. Do not overtighten the bolts or the tray will flex. The bolts are only installed to prevent the weights from falling out of the tray. See Figure 6.

INSTALLING BAGGER BOOT MODEL 815134



WARNING: On multi-blade mowers, rotation of one mower blade will cause all blades to rotate.



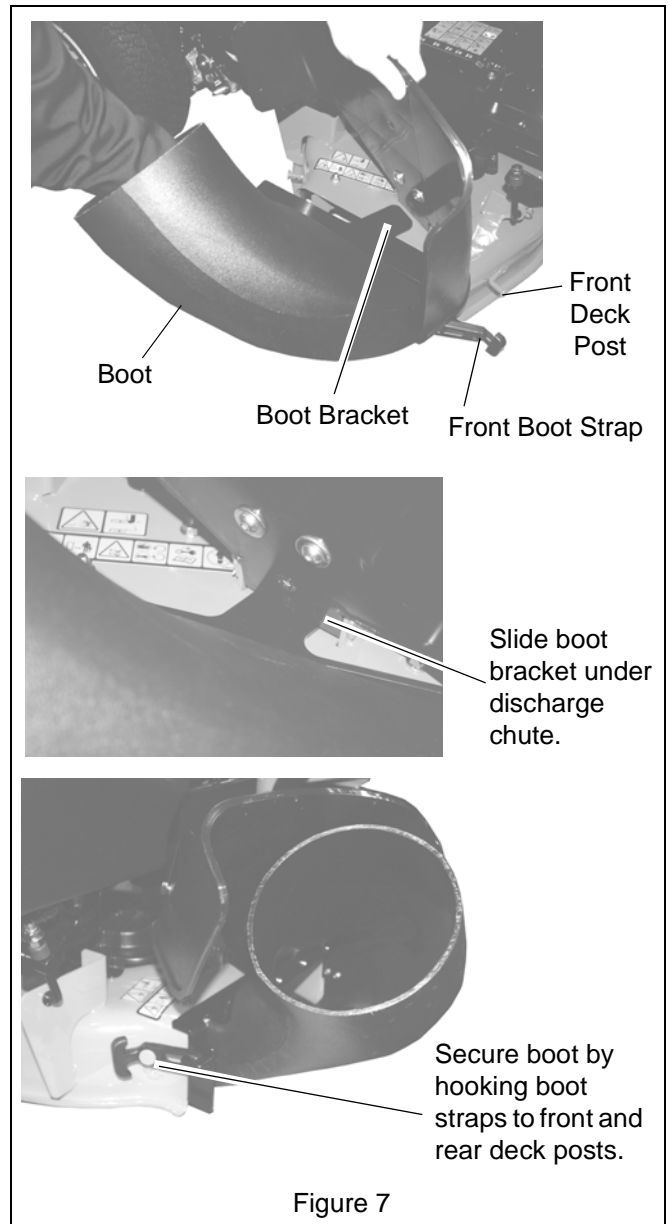
WARNING: Mower blades are sharp and can cut you. Wrap the blades or wear gloves, and use extra caution when servicing them.

See Figure 7.

1. Slide boot bracket under discharge chute bracket.

NOTE: Discharge chute can remain attached to deck.

2. Using front and rear boot straps, secure the boot by attaching boot straps to deck posts.



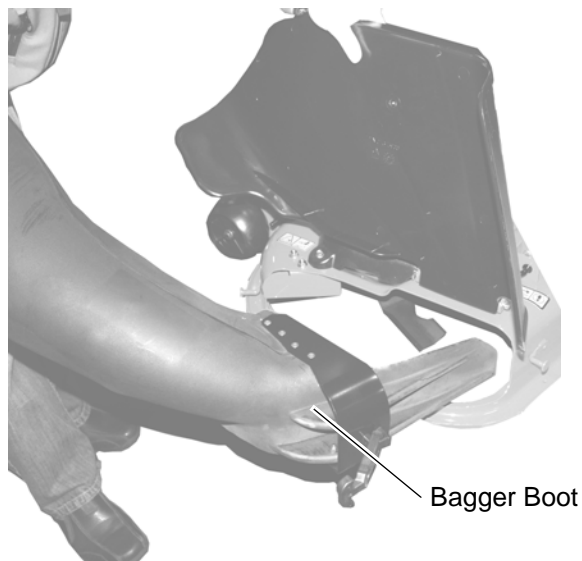
INSTALL BAGGER BOOT MODEL 815142

See Figure 8.

1. Lift discharge chute and insert discharge bagger boot into deck discharge opening.

NOTE: Discharge chute can remain attached to deck.

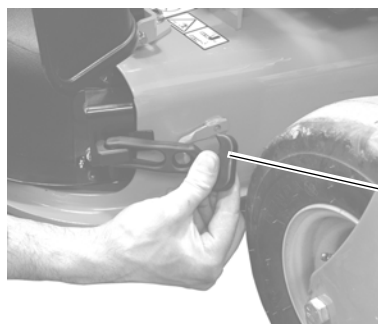
2. Insert bagger boot fully into opening making sure that the front of the boot is positioned inside of the deck shell and the top edge of the boot is positioned on top of the deck shell and below the discharge chute.
3. Push the bagger boot fully into the discharge opening and attach the rear boot strap to the rear attaching post.
4. Attach the boot front strap to the front attaching post.



Bagger Boot



Connect rear boot strap to deck post.



Connect front boot strap to deck post.

Figure 8

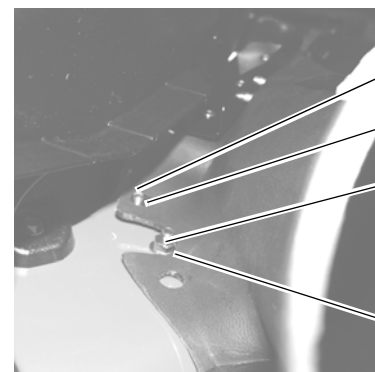
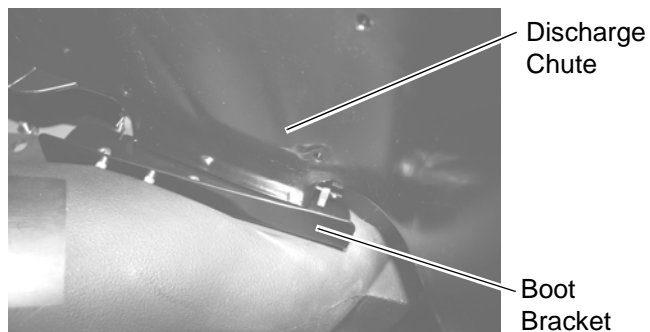
INSTALL BAGGER BOOT MODEL 815150

See Figure 9.

1. Lift discharge chute and slide bagger boot bracket under discharge chute.

NOTE: Discharge chute can remain attached to deck.

2. Insert bagger boot fully onto discharge opening making sure that the hole and notch in the top of the boot line up over exposed deck bolts.
3. Attach rear boot strap to the rear attaching post.
4. Attach front boot strap to the front attaching post.



Front Deck Bolt

Front Boot Hole

Rear Deck Bolt

Boot Notch



Connect rear boot strap to deck post.

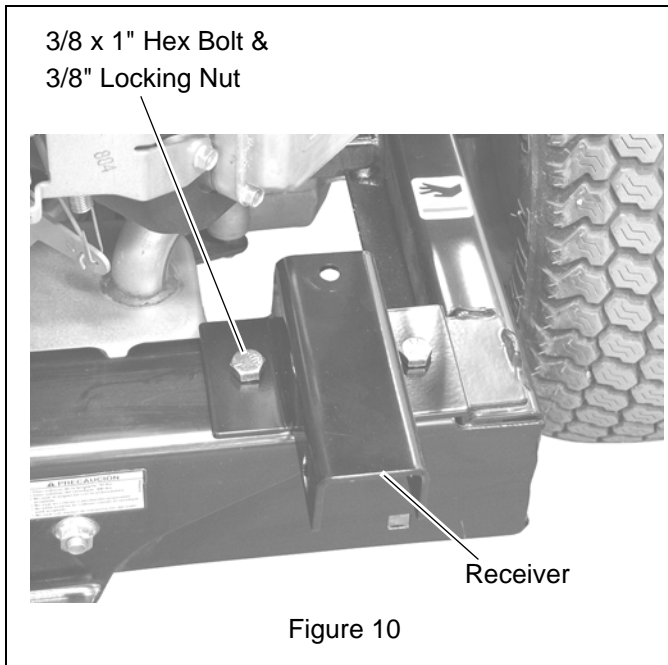


Connect front boot strap to deck post.

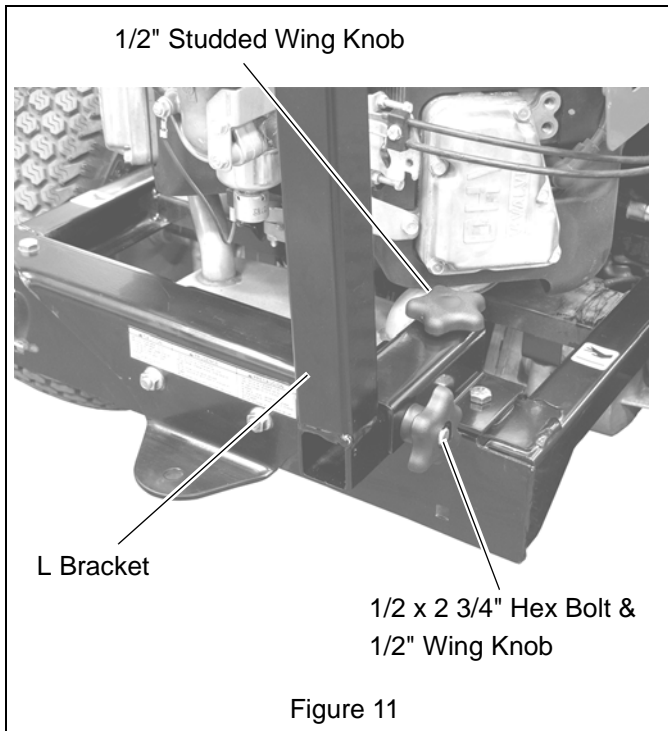
Figure 9

INSTALL FRAME AND HOOD ASSEMBLY

1. Install receiver to the right rear frame using two 3/8 x 1" hex bolts and two 3/8" locking nuts. Tighten hardware. See Figure 10.

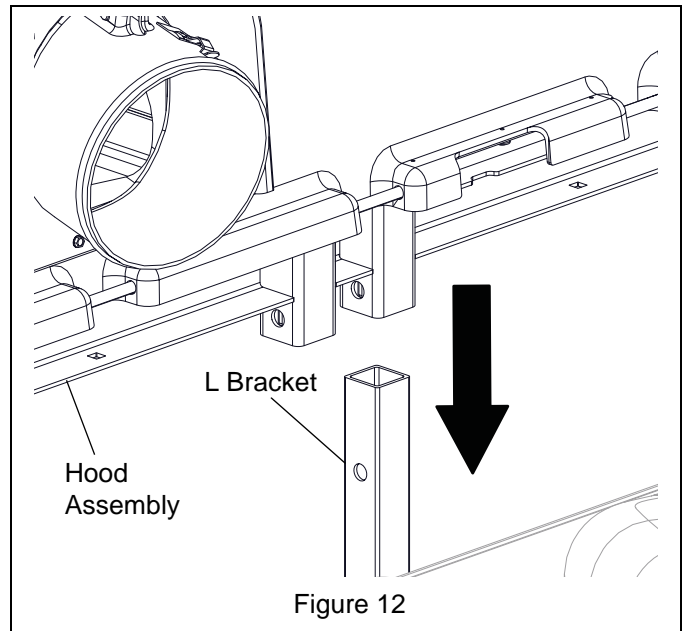


2. Insert L bracket into the receiver and fasten using 1/2 x 2 3/4" round head square neck bolt and wing knob. Do not fully tighten. See Figure 11.
3. Install front studded wing knob into front of receiver. Tighten studded wing knob and hardware installed in step 2.

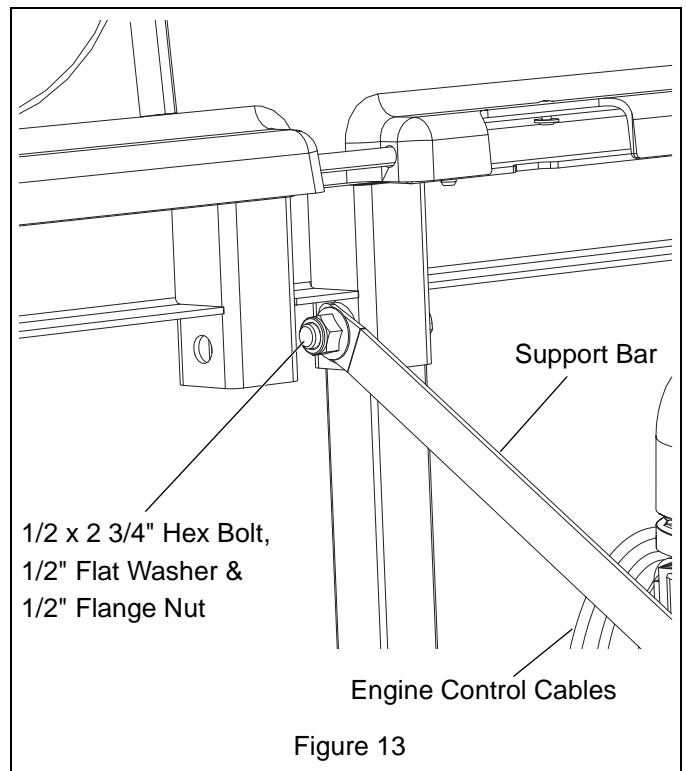


4. Position left hood assembly receiver over L bracket and install onto bracket. See Figure 12.

NOTE: It may require two people to position hood assembly onto bracket.



5. Position bagger support bar inside of engine control cables and attach support bar to L bracket using 1/2 x 2 3/4" hex bolt, 1/2" flat washer and 1/2" flange nut. Flat washer is positioned between bar and L bracket. Do not fully tighten hardware. See Figure 13.



6. Mount front of support bar to the mower frame using 3/8 x 3/4" clevis pin, 3/8" washer and bow-tie locking cotter pin. (The bar must be on the inside of the frame, as shown in Figure 14.) Tighten hardware installed in step 5. See Figure 14.

3/8" Washer & Bow-Tie Locking Cotter Pin (Not Shown)

Clevis Pin



Figure 14



CAUTION: MAKE SURE the heat resistant (smooth side) side of the mesh bags is facing the unit.

INSTALL BAG ON FRAME

1. Thread the bag frames (item 23) through the sleeve on the open end of the mesh bag (item 2). See Figure 15.
2. Install the 3/8 x 1/2 x 3" plastic tubes (item 24) on the ends of the bag frames and push then ends together. on the ends of the bag frame and push the ends together. See Figure 15.

NOTE: The rope handle on the bottom of the bag will point to the outside when the bag is assembled correctly.

Thread bag frame (item 23) through sleeve in mesh bag (item 2).



Install 3/8 x 1/2 x 3" plastic tube (item 24) on each end of frame and push the ends together.

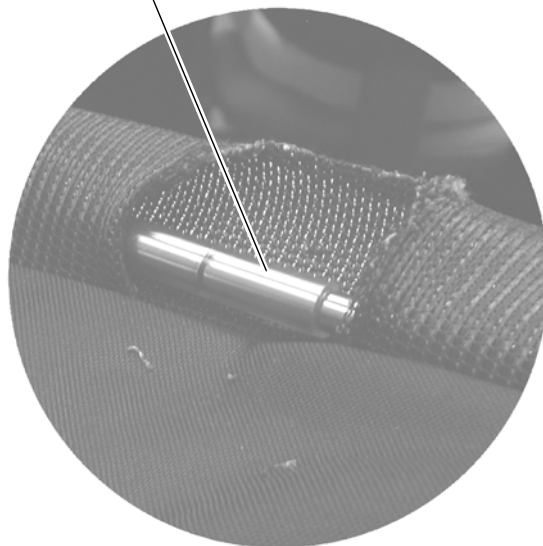
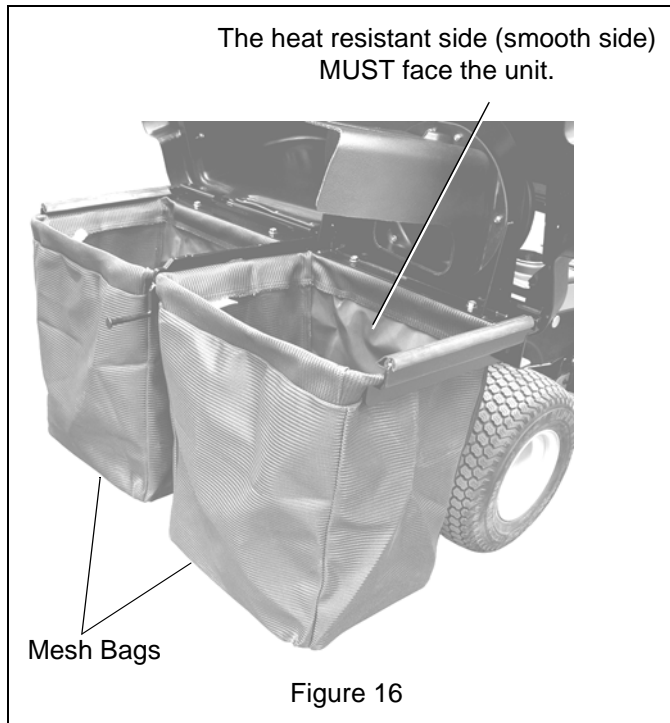
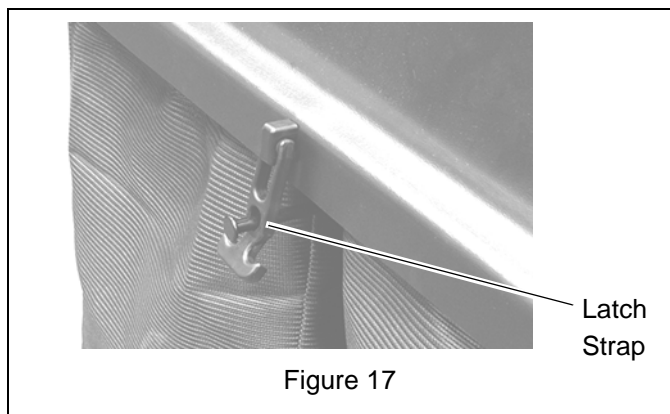


Figure 15

3. Install mesh bags to bagger frame. Make sure that the heat-resistant side of the mesh bags faces the unit. See Figure 16.



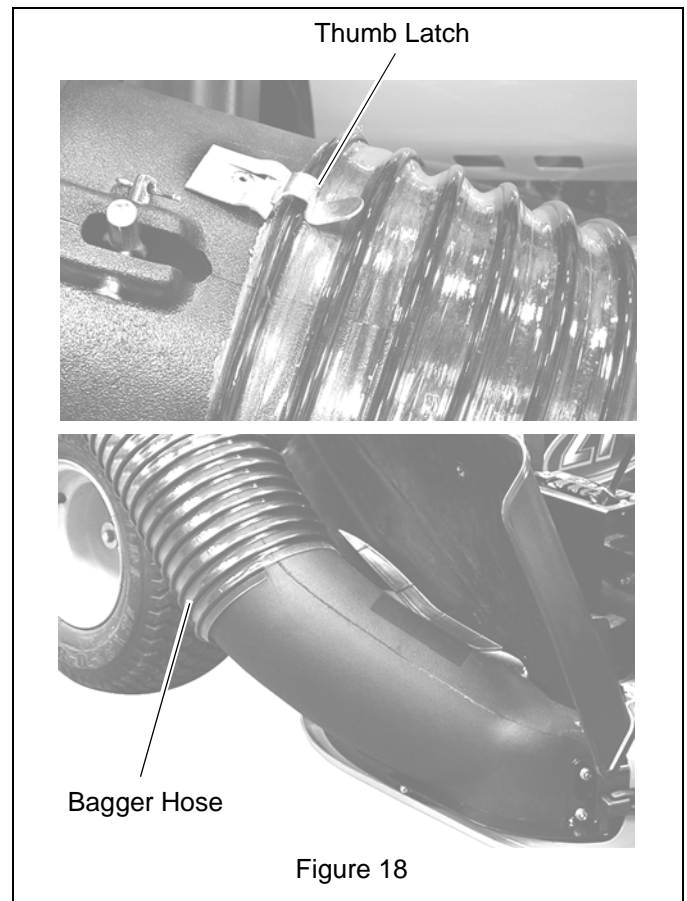
4. Close hood assembly and connect latch strap. See Figure 17.



Install Hose

See Figure 18.

1. Install bagger hose on bagger boot assembly and bagger cover assembly.
2. Flip up thumb latch and push bagger hose into the latch. Flip down the latch, making sure the latch is attached to a rib on the hose.



REMOVAL



WARNING: AVOID INJURY. Read and understand the entire *Safety* section before proceeding.

1. Flip up thumb latch and remove bagger hose from bagger cover assembly and bagger boot assembly (see Figure 18 on page 14).
2. Remove bagger boot assembly.

3. Remove mesh bags (see Figure 16 on page 14).
4. Remove bagger frame and cover assembly, bagger strap and all mounting hardware. The receiver and the front weight tray can remain on the unit for further use.
5. Remove the cast iron weight from the front weight tray.

OPERATION



WARNING: AVOID INJURY. Read and understand the entire *Safety* section before proceeding.



CAUTION: Do not tow anything with the hitch when the bagger is installed.

BEFORE EACH USE

1. Check bagger parts for wear, deterioration, or damage. Replace **ONLY** with Ariens/Gravely original service parts before operating.
2. Make sure the cast iron weight is installed.
3. Ensure all hardware is tight.
4. Remove any grass buildup from bagger parts.
5. Ensure hose is fastened securely on boot assembly.
6. Ensure grass bagger baskets are installed and the bagger cover is closed and securely latched.

OPERATING THE BAGGER

Starting

1. Start engine and engage PTO (see unit's Operator's Manual).
2. Set throttle to full.
3. Set mower deck height.
4. Choose a slow ground speed.

Shutting Off



WARNING: Lower attachment, stop engine, and remove key to prevent unauthorized use. **DO NOT** park on slopes.

1. Allow the mower blades to run for at least 30 seconds to clear boot assembly and hose of debris.
2. Disengage PTO.
3. Shut off unit (see unit's Operator's Manual).

AIRFLOW INDICATOR

See Figure 19.

When the airflow indicator is pointed straight up, the air is restricted, which indicates one or more possible problems:

- The grass bagger baskets are full and need to be emptied. See *Emptying Mesh Bags* on page 16.
- There is a clog in the bagger. See *Unclogging Bagger* on page 16.

When the airflow indicator is facing forward, the air is unrestricted, indicating that the grass bagger baskets are not full and there are no clogs in the bagger.

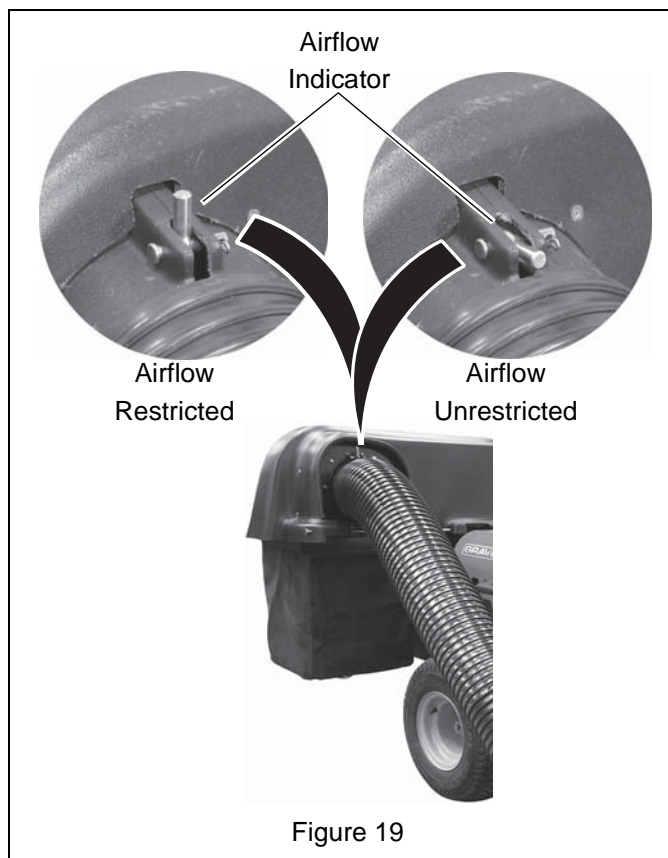


Figure 19

EMPTYING MESH BAGS

If bagger stops picking up grass clippings, the mesh bags may be full.



WARNING: NEVER open cover assembly while the engine is running and the PTO is engaged. ALWAYS shut off engine prior to emptying mesh bags.

To empty grass bags:

1. Disengage PTO, stop engine and remove ignition key. Wait for all moving parts to stop before leaving operator's position.
2. Disconnect latch strap and open cover. Remove each mesh bag from bagger frame. See Figure 20.



Figure 20

3. Empty the grass from each mesh bag.
4. Install mesh bags back on bagger frame. Make sure that the heat-resistant side of the mesh bags faces the unit.
5. Close and latch cover.

UNCLOGGING BAGGER



WARNING: MOVING PARTS can cut or amputate body parts. NEVER attempt to clear boot assembly while engine is running. ALWAYS stop engine, remove key, and wait for moving parts to stop. Sharp edges can cut. Movement of parts can cut off fingers or a hand. Wrap blade(s), wear sturdy gloves and use extreme caution when working near blades.

If hose or boot assembly become clogged, stop forward motion and allow unit to clear itself. If unit will not clear itself, unclog the hose and/or boot assembly manually as instructed below.

1. Stop engine and remove ignition key. Wait for all moving parts to stop.
2. Flip thumb latch and remove hose.
3. Remove grass from hose and boot assembly.
4. Install hose and secure with thumb latch.

OPERATING TIPS

IMPORTANT: DO NOT remove more than 1 1/4" (3.2 cm) of grass when bagging.

- Cut grass when it is dry.
- Cut grass in two passes when cutting thick, long, or wet grass. Make the first cut higher than desired. Make the second cut at desired height.
- Always use full throttle when bagging.
- Adjust ground speed as needed to allow the bagger to pick up debris.

MAINTENANCE



WARNING: AVOID INJURY. Read and understand the entire *Safety* section before proceeding.

Ariens/Gravely Dealers will provide any service or adjustments which may be required to keep your unit operating at peak efficiency.

Interval	Task	Action
Each Use	Check Counter Weight	Ensure the cast iron weight is installed and securely fastened.
	Check Hose	Ensure hose is securely fastened to cover assembly and boot assembly.
	Check Mesh Bags	Ensure mesh bags are installed and bagger cover is closed and securely latched.
	Check Fasteners	Ensure all hardware is tight. Pay special attention to the guards and safety shields.
	Inspect Bagger Parts	Inspect bagger parts for holes, abrasions or structural damage. Replace any worn or damaged parts with Ariens/Gravely service parts.
	Clean Unit	Clear away debris in boot assembly, in tube or in cover assembly.

STORAGE



WARNING: AVOID INJURY. Read and understand the entire *Safety* section before proceeding.

IMPORTANT: NEVER spray unit with high-pressure water. DO NOT store unit outdoors.

Clean plastic surfaces with sponge and mild detergent. Dry with a soft cloth.

Clear away debris under belt cover, in boot assembly, in tube, and in cover assembly before storing.

Remove all dirt, grease, leaves, etc. from unit.

Store in a clean, dry area.

Ensure all fasteners are properly tightened. Inspect moving parts for damage and wear.

Touch up all rusted or chipped painted surfaces.

TROUBLESHOOTING

Problem	Probable Cause	Correction
Airflow indicator points straight up.	Air flow is restricted.	<ul style="list-style-type: none"> The grass bagger baskets are full (see <i>Emptying Mesh Bags</i> on page 16). The bagger is clogged (see <i>Unclogging Bagger</i> on page 16).
Bagger fails to pick up grass or leaves.	The grass bagger baskets are full or bagger is clogged.	<ul style="list-style-type: none"> Empty grass bagger baskets (see <i>Emptying Mesh Bags</i> on page 16). Unclog bagger (see <i>Unclogging Bagger</i> on page 16).

SPECIFICATIONS

Model Number	815134
Description	Non-Powered Bagger
Serial Number	000101 +
Added Length to Unit	19 5/8 in. (49.8 cm)
Added Width to Unit	10 in. (25.4 cm)
Added Weight to Unit	129 lb. (58.5 kg)
For Use on Models	915146, 157, 168, 169 (SN 010000 +)

Model Number	815142
Description	Non-Powered Bagger
Serial Number	000101 +
Added Length to Unit	19 5/8 in. (49.8 cm)
Added Width to Unit	13 in. (33 cm)
Added Weight to Unit	129 lb. (58.5 kg)
For Use on Models	915148, 159, 170, 171 (SN 010000 +)

Model Number	815150
Description	Non-Powered Bagger
Serial Number	000101 +
Added Length to Unit	19 5/8 in. (49.8 cm)
Added Width to Unit	8 in. (20.3 cm)
Added Weight to Unit	129 lb. (58.5 kg)
For Use on Models	915150, 161 (SN 010000 +)

PARTS LIST

SAFETY DECALS

⚠ WARNING / AVERTISSEMENT / ADVERTENCIA



- Stop engine and wait for all moving parts to stop before opening cover.
- Avoid tip over and loss of control.
- DO NOT overload bagger. Use extreme caution on slopes.
- DO NOT make abrupt turns or speed changes.
- Weight kit is required when specified.
- Be aware of new turning radius.

- Arrêter le moteur et attendre l'arrêt complet de toutes les pièces en mouvement avant d'ouvrir le couvercle.
- Éviter le basculement et la perte de contrôle de la machine.
- NE PAS surcharger l'ensacheuse. Faire preuve d'extrême prudence sur les pentes.
- NE PAS effectuer des virages saccadés et des changements de vitesses soudains.
- Le kit de masses est requis lorsque cela est spécifié.
- Faire attention au nouveau rayon de braquage.

- Apagar el motor y esperar a que todas las piezas móviles se detengan antes de abrir la cubierta.
- Evitar el vuelco y la pérdida de control.
- NO sobrecargar la embolsadora. Tener cuidado en las pendientes. NO realizar giros o cambios de velocidad bruscos.
- El juego de contrapesos es necesario cuando se especifique.
- Tener cuidado con el nuevo radio de giro.

00397700

1



2

⚠ CAUTION / PRUDENCE / PRECAUCIÓN

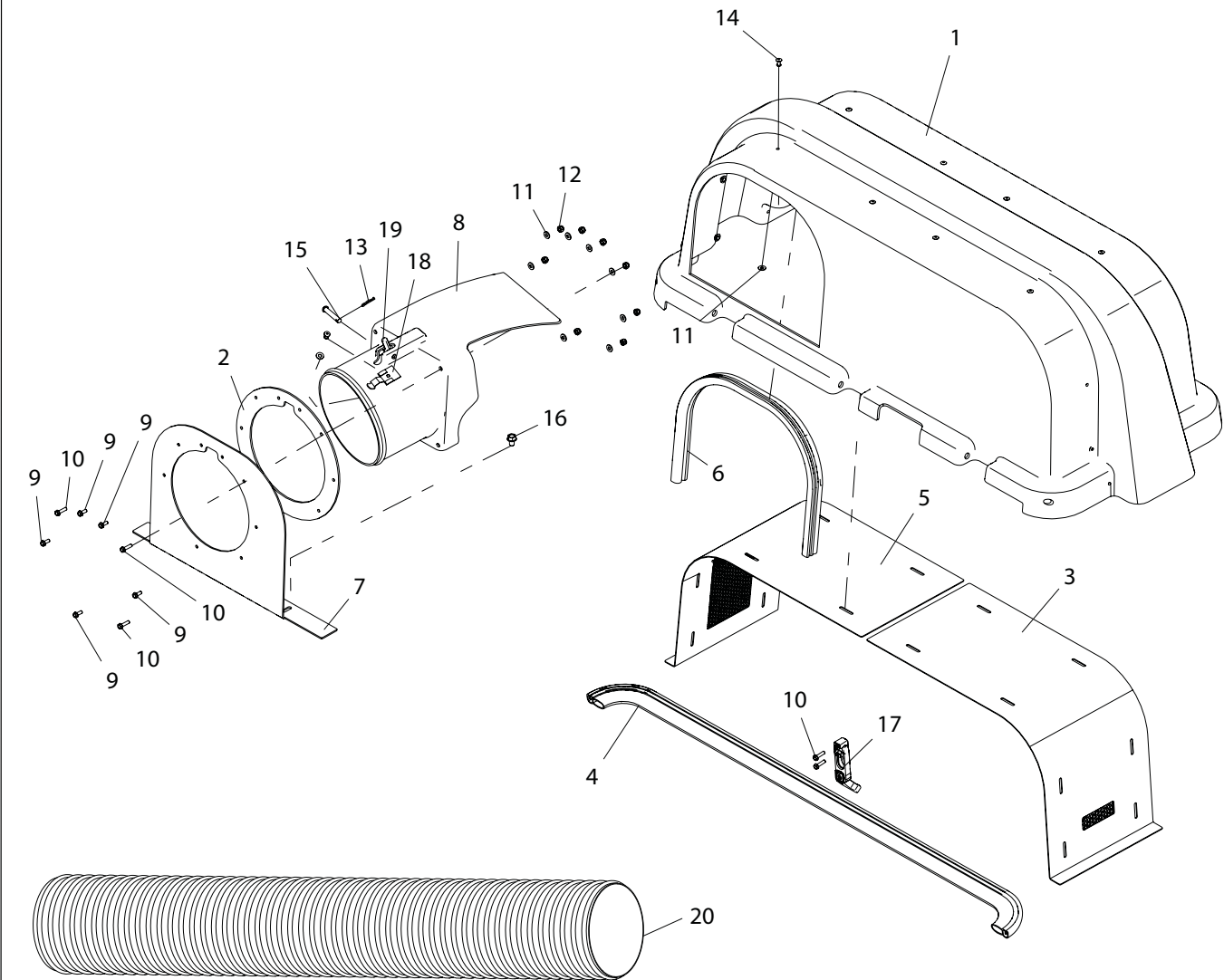
- Stop Engine Before Removing Tube, Boot, Or Placing Hand Inside.
- Arrêter Le Moteur Avant De Déposer Le Tube, Le Capuchon De Protection Ou De Mettre La Main A L'intérieur.
- Apagar El Motor Antes De Meter Las Manos Al Interior O De Extraer El Tubo O La Tolva.

607897700C

BOM/ID	Number	Qty	Description
1	05359700	1	Decal, Bagger Cover
2	07897700	1	Decal, Boot Caution

BAGGER HOOD

PREASSEMBLED IN KIT 51577800



BOM ID	Number	Qty	Description
1	04409600	1	COVER, 2-BUCKET BAGGER
2	04409900	1	SEAL, UPPER BOOT
3	04410051	1	WLDMT, BAGGER HOOD VENT, LH
4	04410700	1	SEAL, BULB - BAGGER HOOD
5	04431051	1	WLDMT, BAGGER HOOD VENT, RH
6	04439500	1	SEAL, BULB
7	04439751	1	WLDMT, TUBE SUPPORT
8	04446800	1	BOOT, UPPER
9	06116700	5	SCR-MCH 10-24X.50 HWH YWZC
10	06116900	5	SCR-MCH 10-24X.75 HWH YWZC
11	06442700	25	WSHR-FL-STL

BOM ID	Number	Qty	Description
12	06536000	8	NUT-LK-NYL #10-24 YWZC
13	06714800	1	PIN-HAIR, ENDRIES #25 YWZC
14	06800108	17	RVT-POP .187x.375
15	06815300	1	PIN, CLEV .309X1.62 YWZC
16	07411500	2	SCR-TAP .31-18X.50 HWH TR YWZ
17	09079500	1	LATCH, RUBBER
18	07000026	1	LATCH, THUMB
19	00168300	1	INDICATOR, FLOW
20	04445600	1	BAGGER TUBE (815134)
	04222900	1	BAGGER TUBE (815142, 150)

BAGGER LOWER BOOT

MODEL 815134
PREASSEMBLED IN KIT 51577500

BOM ID	Number	Qty	Description
1	04433200	1	BAGGER, BOOT MOLDED
2	04449751	1	BRKT, BOOT 34" ZOOM/ZT
3	06116900	4	SCR-MCH 10-24 x .75 HWH YWZC
4	06442700	8	WSHR-FL-STL .219 x .500 x .049 YWZC
5	06803800	8	RVT-POP .187 x .375
6	09079500	2	LATCH, RUBBER

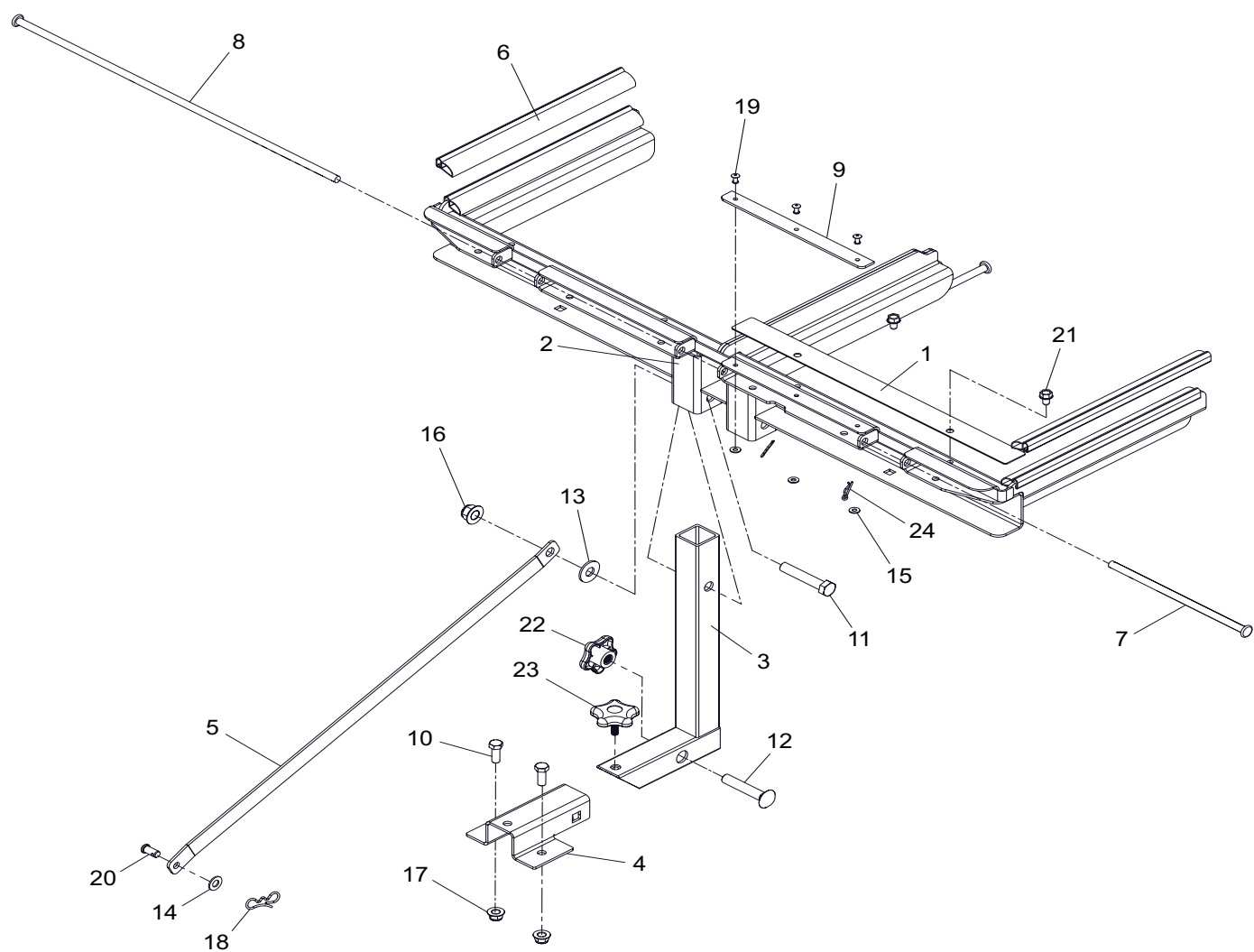
MODEL 815142
PREASSEMBLED IN KIT 51577600

BOM ID	Number	Qty	Description
1	04392000	1	BOOT, BAGGER, 42" TUNNEL DECK
2	04449651	1	WLDMT, BOOT 42" ZOOM/ZT
3	04513051	1	BRKT, BOOT REINFORCEMENT
4	06116900	4	SCR-MCH 10-24X.75 HWH YWZC
5	06442700	5	WSHR-FL-STL.219X.500X.049YWZC
6	06536000	1	NUT-LK-NYL #10-24 YWZC
7	06803800	4	RVT-POP .187x.375
8	09079500	2	LATCH, RUBBER
9	05960800	1	BLT-HEX 10-24X 1.0 YWZC

MODEL 815150
PREASSEMBLED IN KIT 51577700

BOM ID	Number	Qty	Description
1	04432300	1	BAGGER, BOOT MOLDED
2	04449551	1	BRKT, BOOT 50" ZOOM/ZT
3	06442700	5	WSHR-FL-STL .219 x .500 x .049 YWZC
4	06803800	5	RVT-POP .187 x .375
5	09079500	2	LATCH, RUBBER
6	06116900	4	SCR-MCH 10-.75 HWH YWZC

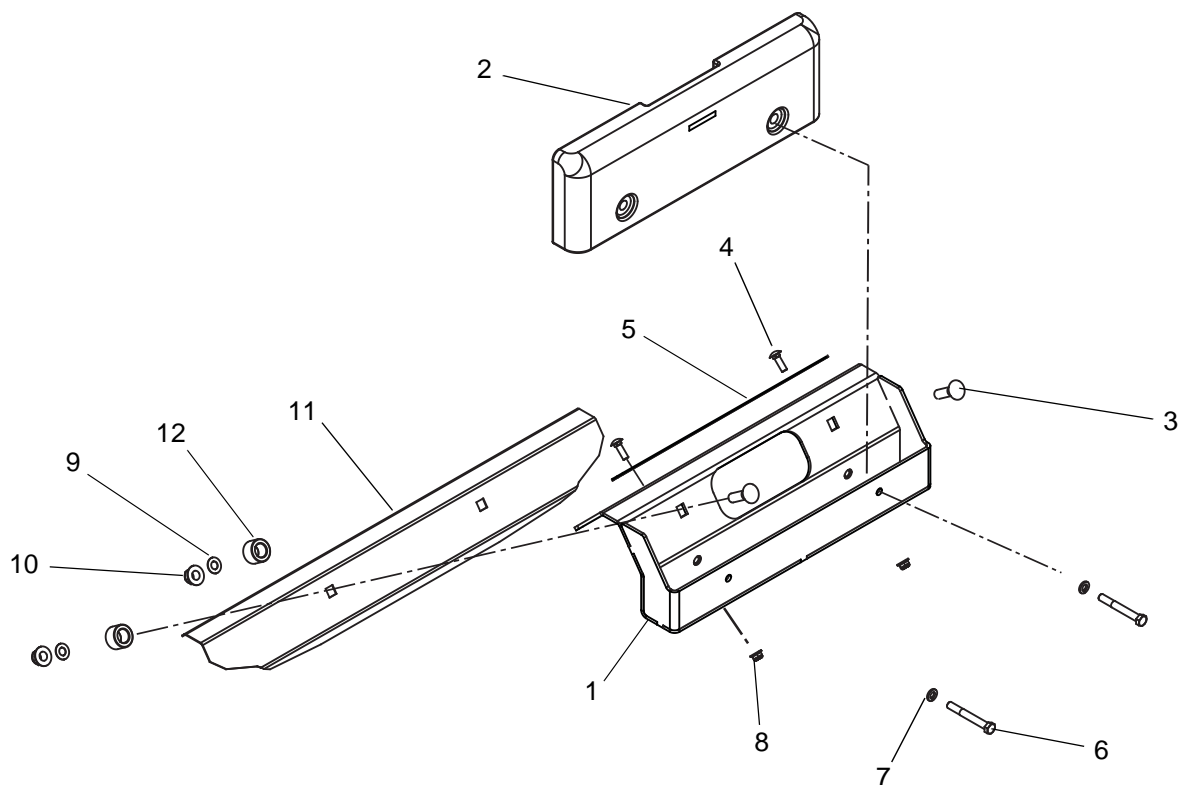
BAGGER FRAME



BOM ID	Number	Qty	Description
1	03844151	1	OVERLAP PLATE, BAGGER FRAME
2	04795751	1	ASM, BAGGER FRAME UPPER
3	04409751	1	BRKT, RECEIVER SLEEVE INSERT
4	04409851	1	BRKT, RECEIVER LOWER
5	04410551	1	BRKT, BAG FRAME SUPPORT BAR
6	04439500	2	SEAL, BULB
7	04443400	1	PIN, BAGGER HINGE (L)
8	04443500	1	PIN, BAGGER HINGE (R)
9	04446700	1	SEAL, HINGE
10	05948700	2	BOLT-HEX-Gr5-UNC-YWZC
11	05965500	1	BOLT-HEX-Gr5-UNC-YWZC
12	06225700	1	BLT-RDHDSQNK .50-13X2.75 YG5
13	06430200	1	WSHR-FL-STL .531X1.250X.100 YWZC

BOM ID	Number	Qty	Description
14	06436200	1	WSHR-FL-STL.406X.812X.065 YWZ
15	06442700	3	WSHR-FL-STL.219X.500X.049 YWZC
16	06500010	1	NUT-LK-NYL-FLG .50-13 YWZC
17	06545500	2	NUT-LK-NYL-FLG .38-16 YWZC
18	06700201	1	PIN, BOWTIE LOCKING .091X1.875
19	06803800	3	RVT-POP .187x.375
20	06814800	1	PIN-CLEV .38X.75 YWZC
21	07411500	2	SCR-TAP .31-18X.50 HWH TR YWZ
22	07500225	1	KNOB, WING
23	07500226	1	KNOB, WING STUDDED
24	06714800	2	PIN-HAIR, ENDRIES #25 YWZC

COUNTERWEIGHT ASSEMBLY



BOM/ID	Number	Qty	Description
1	04215451	1	Weldment, Bagger Weight Tray
2	00172000	1	Cast Iron Weight
3	06200205	2	Bolt, Round Head Square Neck 1/2-13 x 2.00
4	06216100	2	Bolt, Round Head Square Neck 1/2-13 x 1.00
5	03833800	1	Grip, Adhesive
6	05957800	2	Bolt, Hex 3/8-16 x 3.00
7	06308800	2	Washer, Lock 3/8
8	06545400	2	Nut, Nyloc 5/16-18
9	06500705	2	Nut, Push
10	06500010	2	Nut, Flange Nyloc 1/2-13
11	04188353	1	Footrest
12	04192901	2	Tube



Consumer Mowing Equipment Limited Warranty

Ariens Company (Ariens) warrants to the **original purchaser** that Ariens, Gravely and Countax brand lawn and garden consumer products purchased on or after 9/1/2015 will be free from defects in material and workmanship for the time period noted in the chart below. Equipment put to personal use around a single household or residence is considered "Consumer Use"; equipment put to any business use (agricultural, commercial, or industrial) or used at multiple locations is considered "Commercial Use." If any product is rented or leased, then the duration of these warranties shall be 90 days after the date of purchase.

An authorized Ariens dealer (Ariens brand products), Gravely dealer (Gravely brand products), or Countax dealer (Countax brand products) will repair any defect in material or workmanship, and repair or replace any defective part, subject to the conditions, limitations and exclusions set forth herein. Such repair or replacement will be free of charge (labor and parts) to the original purchaser except as noted below.

Warranty Code	Product Group	Warranty Period Consumer Use	Warranty Period Commercial Use
HA	Zoom, ZT, IKON-X, IKON-XL, ZT-X, ZT-XL Zero-Turn Riders	3 Years	90 Days
HB	Max Zoom & ZT HD Zero-Turn Riders	3 Years	1 Year
HC	"936" Tractors, "961" Series Walk-Behind Mowers	2 Years	90 Days
HD	Classic LM Series Mowers; Wide Area Walk Mowers; Razor, XD3	3 Years	90 Days
N/A	Service (replacement) Parts	90 Days (no labor)	90 Days (no labor)
AA	Serialized Attachments	1 Year	1 Year

Special Extensions

The chart below details special extensions to this warranty:

Warranty Code	Warranty Exception	Warranty Period	Use	Detail
HA, HB	Mower Deck Shell on Zero-Turn Riders	5 Years	Consumer	3 years parts and labor Additional 2 years parts only
HA, HB	Main Frame on Zero-Turn Riders	5 Years	Consumer	3 years parts and labor Additional 2 years parts only
HA	Batteries for AMP™ Rider	2 Years	Consumer	100% first year; prorated second year

Exceptions and Limitations

The chart below details special exceptions to this warranty:

Warranty Code	Warranty Exception	Warranty Period	Use	Detail
All	Batteries	1 Year	Consumer	Prorated
All	Belts, Muffler, Tires	None	Commercial	These components are not covered when used commercially.
All	Cloth, Plastic, and Rubber Components (Including Belts and Cables)	Maximum 2 Years	All	Warranty is limited to 2 years for consumer use. Except as noted above, these components are covered for defect, not for wear.
All	Engines	See Engine Manufacturer's Warranty	All	Engines are covered by engine manufacturer's warranty. Refer to engine manufacturer's warranty statement.

Customer Responsibilities

Register the product immediately at the time of sale. If the dealer does not register the product, the customer must complete the product registration card in the literature package and return it to the Ariens Company, or register the unit online at www.ariens.com, www.gravelly.com, www.countax.com.

To obtain warranty service, the **original purchaser** must:

- Perform the maintenance and adjustments explained in the owner's manual.
- Promptly notify Ariens or an authorized Ariens, Gravelly or Countax service representative of the need for warranty service.
- Transport the product to and from the place of warranty service at owner's expense.
- Have the warranty service performed by an authorized Ariens, Gravelly or Countax service representative.

To Find an Authorized Service Representative:

In the U.S. and Canada:		
Use the dealer locator on our websites: www.ariens.com • www.gravelly.com		
Or contact us by mail or by phone:		
In the U.S., Canada, Mexico, Caribbean, Central and South America:	In Europe, Asia, Africa or the Middle East:	In Australia or New Zealand:
Ariens Company 655 W. Ryan Street Brillion, WI 54110 Phone: (920) 756 - 4688 www.ariens.com	Ariens Company Limited Great Haseley, Oxford OX44 7PF United Kingdom Phone: +44 800 597 7777 www.countax.co.uk	Allpower Industries Pty Ltd 128 Bridge Rd Keysborough VIC 3173 Australia Phone: +61 1800 333 428 www.allpower.com.au

Exclusions – Items Not Covered by This Warranty

- Parts that are not genuine Ariens, Gravelly or Countax service parts are not covered by this warranty and may void the warranty.
- Damages resulting from the installation or use of any part, accessory, or attachment which is not approved by the Ariens Company for use with product(s) identified herein are not covered by this warranty.
- The following maintenance, service and replacement items are not covered by this warranty unless they are noted in the Limitations section above: lubricants, spark plugs, oil, oil filters, air filters, fuel filters, brake linings, brake arms, brake shoes, skid shoes, scraper blades, shear bolts, mower blades, mower vanes, brushes, headlights, light bulbs, knives, cutters.
- Any misuse, alteration, improper assembly, improper adjustment, neglect, or accident which requires repair is not covered by this warranty.
- **Use of gasoline blends exceeding 10% ethanol voids any and all warranties.**
- Products are designed to the specifications in the area that the product was originally distributed. Different areas may have significantly different legal and design requirements. This warranty is limited to the requirements in the area in which the unit was originally distributed. Ariens Company does not warrant this product to the requirements of any other area. Warranty service is limited to service within the area originally distributed.
- In countries other than the United States and Canada, contact the Ariens Company dealer for warranty policies that govern within your country. Rights may vary from country to country and within any one country.

Disclaimer

Ariens Company may from time to time change the design of its products. Nothing contained in this warranty shall be construed as obligating the Ariens Company to incorporate such design changes into previously manufactured products, nor shall such changes be construed as an admission that previous designs were defective.

LIMITATION OF REMEDY AND DAMAGES

Ariens Company's liability under this warranty, and under any implied warranty that may exist, is limited to repair of any defect in workmanship, and repair or replacement of any defective part. Ariens Company shall not be liable for incidental, special, or consequential damages (including lost profits). Some states do not allow the exclusion of incidental or consequential damages, so the above limitation or exclusion may not apply to you.

AUSTRALIAN CONSUMER LAW

The following applies solely to warranties subject to Subsection 102(1) of the Australian Consumer Law: Our goods come with guarantees that cannot be excluded by the Australian Consumer Law. You are entitled to a replacement or refund for a major failure and for compensation for any other reasonably foreseeable loss or damage. You are also entitled to have the goods repaired or replaced if the goods fail to be of acceptable quality and failure does not amount to a major failure.

DISCLAIMER OF FURTHER WARRANTY

Ariens Company makes no warranty, express or implied, other than what is expressly made in this warranty. If the law of your state provides that an implied warranty of merchantability, or an implied warranty of fitness for particular purpose, or any other implied warranty, applies to Ariens Company, then any such implied warranty is limited to the duration of this warranty. Some states do not allow limitations on how long an implied warranty lasts, so the above limitation may not apply to you.

This warranty gives you specific legal rights, and you may also have other rights which vary from region to region.



GRAVELY.

**Ariens
Gravely**

655 West Ryan Street
Brillion, WI 54110-1072

920-756-4688

Fax 920-756-2407

www.ariens.com

www.gravely.com

Ariens Company Brands

