



Harbor Breeze® is a registered trademark of LF, LLC.  
All rights reserved.

ATTACH YOUR RECEIPT HERE

Serial Number \_\_\_\_\_  
Purchase Date \_\_\_\_\_

**Questions?** Call our customer service department at 1-800-643-0067, 8 a.m. - 6 p.m., EST, Monday - Thursday, 8 a.m. - 5 p.m., EST, Friday.

SAFETY INFORMATION

Read instructions completely before installing wall control.

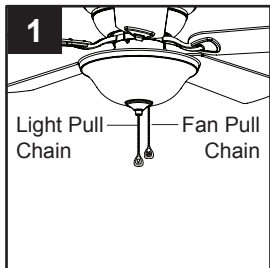
**⚠ WARNING:** If the color of the household supply wires is different than what is referred to in the instructions below, a professional electrician should determine proper wiring.

CAUTION:

- Do not install in damp locations. For indoor use only.
- Do not use with fans that have integrated remote controls.
- Be sure the outlet box is properly grounded or that a green or bare (ground) wire is present.
- This unit is intended to control a ceiling fan with electrical source of AC 110/120V, 60Hz.

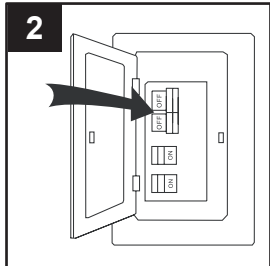
ASSEMBLY INSTRUCTIONS

1. Use existing pull chains on the desired fan to set fan speed to high and to turn the light on.



2. Turn off circuit breakers and wall switch to the fan.

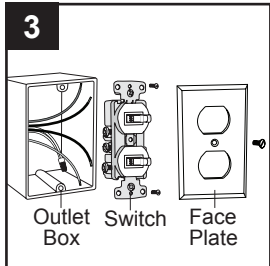
**⚠ DANGER:** Failure to disconnect power supply prior to installation may result in serious injury or death.



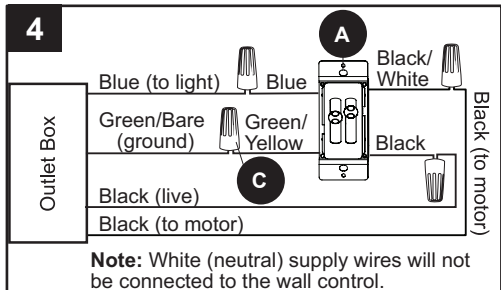
3. Identify and label wires from existing fan and light switches. Then, remove the existing face plate and switch from the outlet box.

**Note:** The white supply wires (neutral) will remain in the outlet box secured with a wire connector.

**Important:** This wall control requires separate wiring for the ceiling fan and light kit. If your fan and light kit are controlled by a single switch, additional wiring will be required.

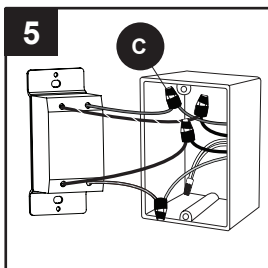


4. Secure all wiring connections with wire connectors (C) according to diagram and these steps:

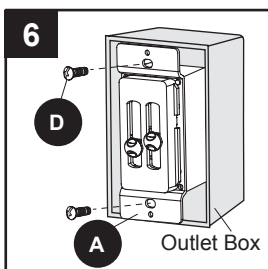


- Connect Green Wire with Yellow Stripe from wall control (A) to Bare/Green (ground) supply wire.
- Connect the Black wire from the wall control (A) to the Black (live) supply wire.
- Connect the Black Wire with White Stripe from the wall control (A) to the Black wire (fan power) from the outlet box.
- Connect the Blue Wire from the wall control (A) to the Blue wire (light power) from the outlet box.

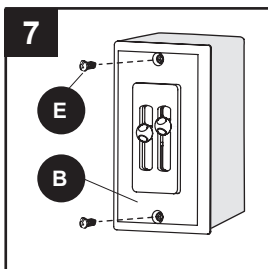
5. Wrap electrical tape (not included) around each wire connector (C) down to the wire. Then, push wire connections into the outlet box. Place the Green and White wire connections on the opposite side of the outlet box from the Black and Blue wire connections.



6. Attach the wall control (A) to the outlet box using the mounting screws (D).



7. Attach the face plate (B) to the wall control using the plate screws (E).



8. Turn on power supply to the wall control (A).

