

# INSTALLATION INSTRUCTIONS

## VANITY LIGHT

### READ AND FOLLOW SAFETY INFORMATION

Turn off the main power at the circuit breaker before installing and servicing the fixture to prevent possible injury from electric shock.

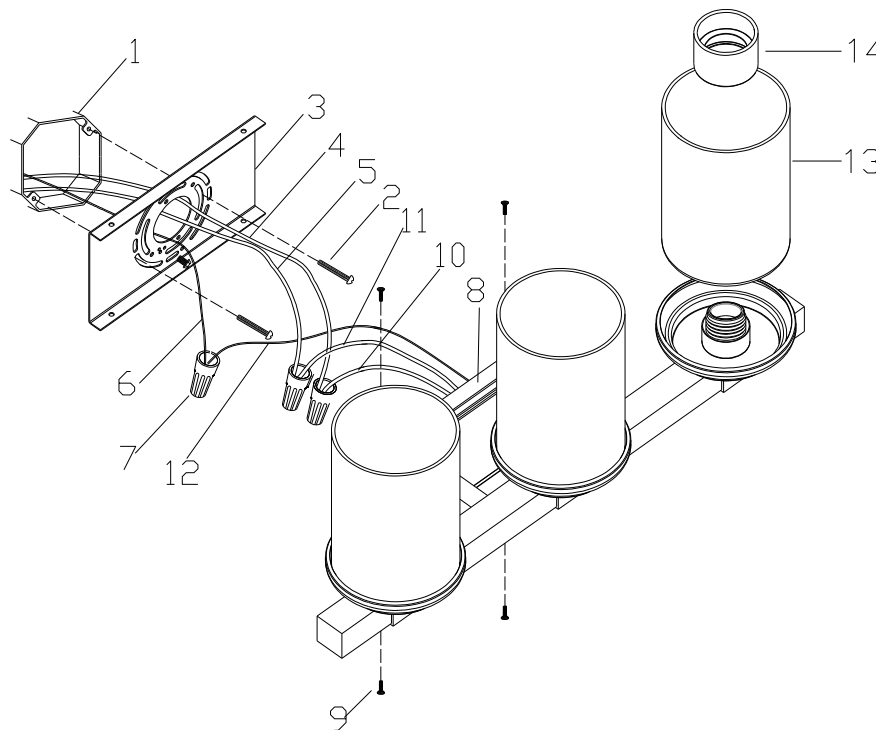
All electrical connections must be in accordance with local and National Electrical Code (N.E.C.) standards. If you are unfamiliar with proper electrical wiring connections, obtain the services of a qualified electrician.

### INSTALLATION & ASSEMBLY

Remove the fixture and the mounting package from the box and make sure that no parts are missing by referencing the illustrations on the installation instructions.

1. Pull the power supply wires out from the OUTLET BOX (1) and mount the wall plate (3) to outlet box using mounting screws (2).
2. Make wire connections . Connect black supply wire (5) to black fixture wire(11), connect white supply wire (4) to white fixture wire (10) by using wire nuts(7).
3. Connect supply ground wire (6) to fixture ground wire (12) by using wire nut(7). After wires are connected, carefully tuck wires back into the outlet box.
4. Attach the fixture back plate(8) firmly to wall plate(3) and mount against the wall. Secure in place with side mount screws(9).
5. Slie glass shades(13) over the socket and secure glass shades to socket cups using with retaining rings (14).
6. Installation complete, restore power at the circuit breaker and turn light switch on to activate this fixture.

Care and maintenance – Use damp and clean cloth to wipe the surface of the fixture.



- |                              |                         |
|------------------------------|-------------------------|
| 1. OUTLET BOX (NOT INCLUDED) | 8. FIXTURE BACK PLATE   |
| 2. MOUNTING SCREW            | 9. SIDE MOUNT SCREW     |
| 3. WALL PLATE                | 10. WHITE FIXTURE WIRE  |
| 4. WHITE SUPPLY WIRE         | 11. BLACK FIXTURE WIRE  |
| 5. BLACK SUPPLY WIRE         | 12. FIXTURE GROUND WIRE |
| 6. SUPPLY GROUND WIRE        | 13. GLASS SHADE         |
| 7. WIRE NUT                  | 14. RETAINING RING      |