

WORK EZ BEST Laptop Stand

OVERVIEW:

Your new laptop stand "accordions" up and down, holding laptops at a comfortable height and viewing angle.

- Each stand has 2 legs.
- Each leg has 3 segments.
- Each segment is connected with a push-button joint

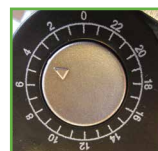
To operate a joint, depress the button and rotate the leg to the desired angle

Once the button is depressed, joints rotate in a complete circle or 360°.

The joint is locked when the button is extended. Only use WorkEZ when all joints are locked.



Depress the button to adjust the leg.



An extended button means the joint is locked.

JOINT MEASUREMENTS:

Joints lock in ~15-degree increments (marked with the numbers 0 to 23). Each joint button has an arrow that points to the locked setting.



USING THE MOUSE PAD:



Insert Mouse Pad vertically into the hole on the side of the panel.



Roll mouse pad to outside of the panel



Adjust screw so mouse pad is level.

For Each Leg:

- JOINT A = outside joint, farthest from the panel.
- JOINT B = middle joint.
- JOINT C = inside joint, connected to the panel.

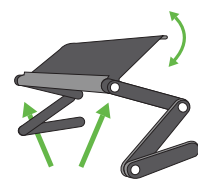
Recommended joint settings to help you set up your stand

USE	JOINT A	JOINT B	JOINT C	
Seated at Desk	1	23	1	
Standing	3	17	5	
In Bed	11	21	4	
On the Couch	1	21	3	

Your stand has a seemingly infinite number of configurations. Feel free to adjust the stand to any height or angle you'd like. Be sure that all joints are locked and the stand is stable before use.

Customizing the Panel Angle

Simultaneously pressing the same joint on each leg lets you quickly and evenly adjust the platform angle or height



Push both buttons

To COLLAPSE your stand:

1. Fold JOINT C to 0°
2. Fold JOINT B to 0°
3. Fold JOINT A to 0°