

NICOR[®] | **LED**

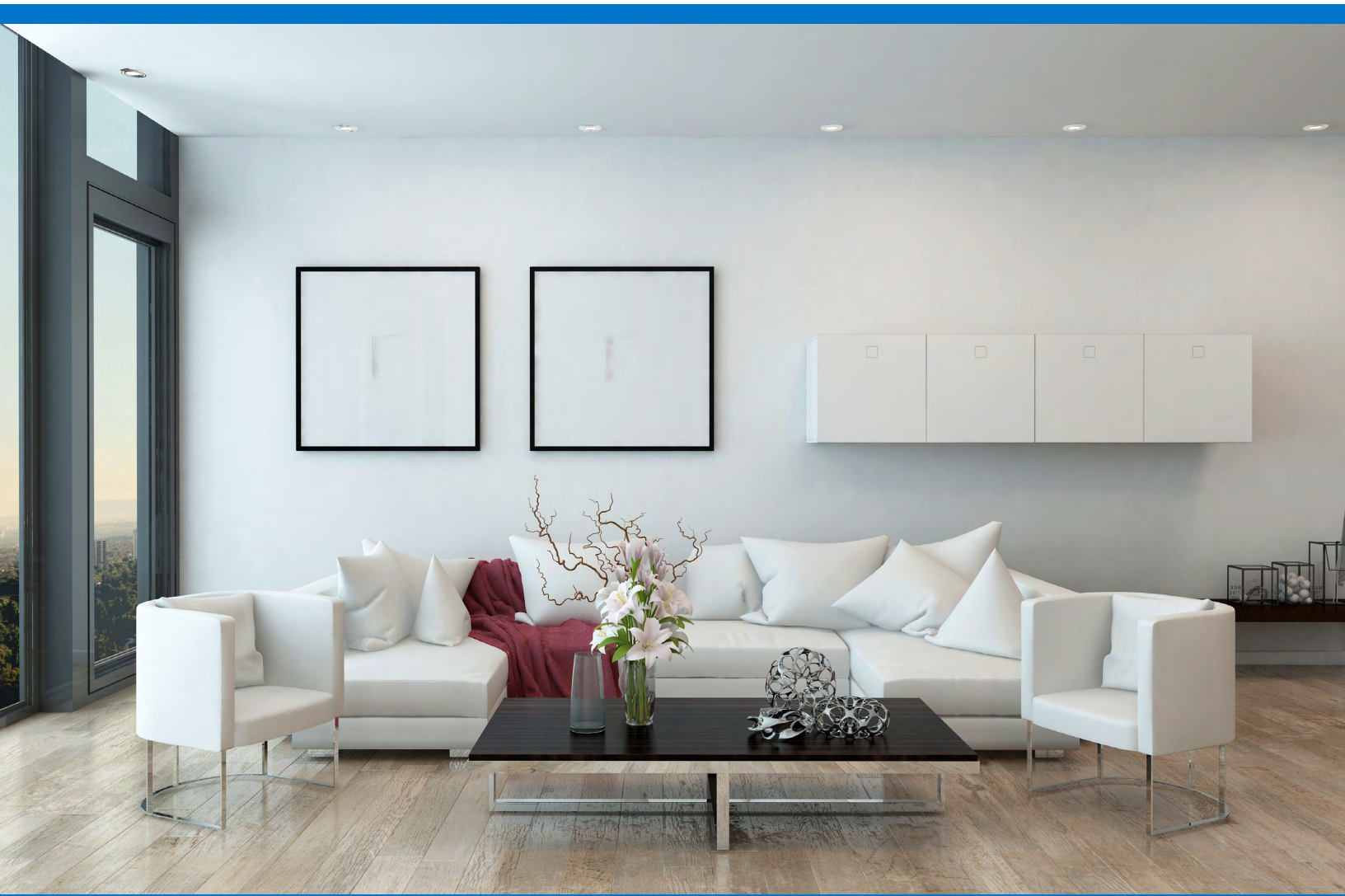
SUREFIT

Ultra Slim Surface Mount **LED** Downlight



**Think Inside the J-Box
for Your Next Downlight Solution**

SureFit Will Revolutionize Your Thinking



The innovative SureFit Surface Mount LED Downlight features a custom-designed, integrated driver for quick and easy installation into a 4/0 metallic or non-metallic J-Box with minimum 20 cubic inch volume. Simply mount the fixture directly to the J-Box using the two included screws. Removable, interchangeable trim plates also offer flexibility delivering eight distinct styles with a single fixture. Available in white, black, nickel and oil-rubbed bronze with either a round or square aperture, this downlight presents a tight profile that sits almost flush to the ceiling to enhance the visual aesthetic of any living space. It's easy to add light with minimal effort in residential and light commercial spaces including living rooms, bedrooms, home theaters, corridors, offices, retail and more.



Ultra Slim, Ultra Revolutionary

Energy Efficient

Dimmable to less than 10% with most TRIAC dimmers

Delivers Eight Distinct Styles

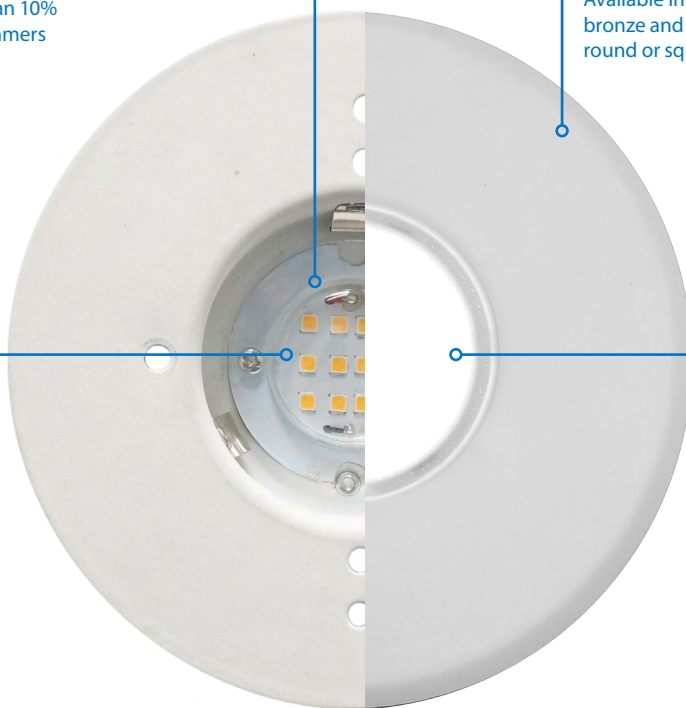
Available in black, nickel and oil-rubbed bronze and paintable white with either a round or square aperture

High Performance

LEDs offer greater than 90 CRI and R9 greater than 50 for true color rendering

Uniform Light Distribution

Polystyrene diffuser and specular reflector cone reduces glare while maximizing lumen output



Thermally Protected

Spun aluminum housing routes heat away from electrical components

Custom-Designed, Integrated Driver

Low profile, high efficiency driver eliminates need for large interior mounting space



Ultra Slim Profile

Tight profile that sits almost flush to the ceiling to enhance the visual aesthetic of any space

Interchangeable Trim Plates

Removable trim plates offer design flexibility with a single fixture

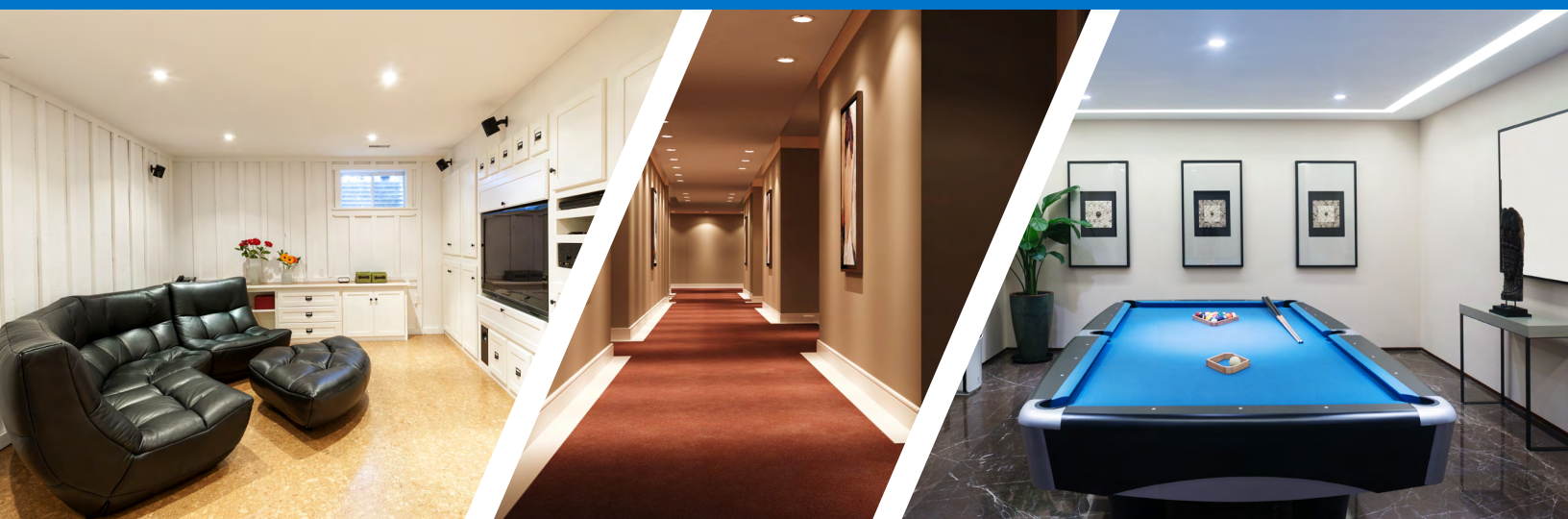
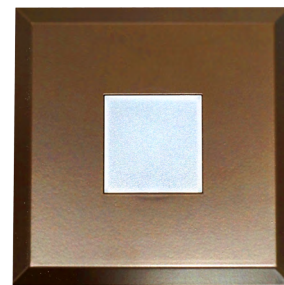
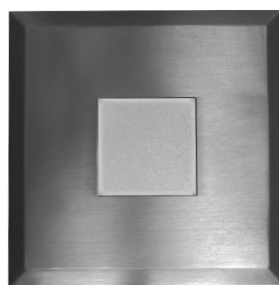
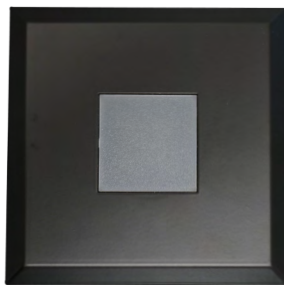
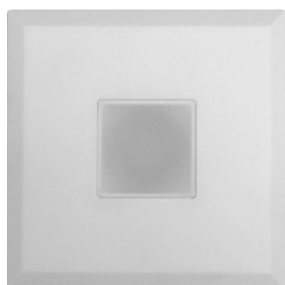




Removable, Interchangeable Trims Deliver Eight Distinct Designs

Multiple Color Choices, Versatile Apertures

White • Black • Nickel • Oil-Rubbed Bronze





So Slim It's Sure to Fit Any Application

Junction Box Mounting Applications

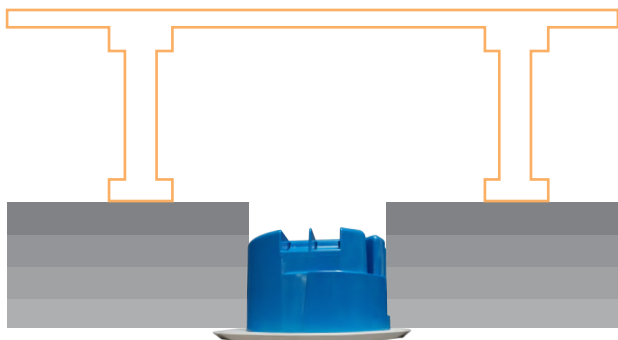
Concrete



Insulation- batting or spray foam



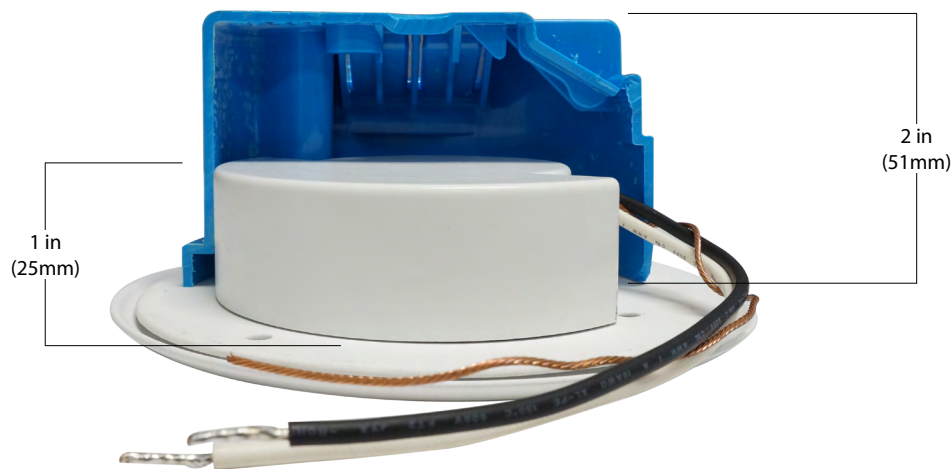
Fire-rated with appropriate J-Box



Framing



Tight Spaces Are Effortless for SureFit





Speed Up Installation by Mounting Directly to the J-Box

SureFit Compatible Junction Boxes*



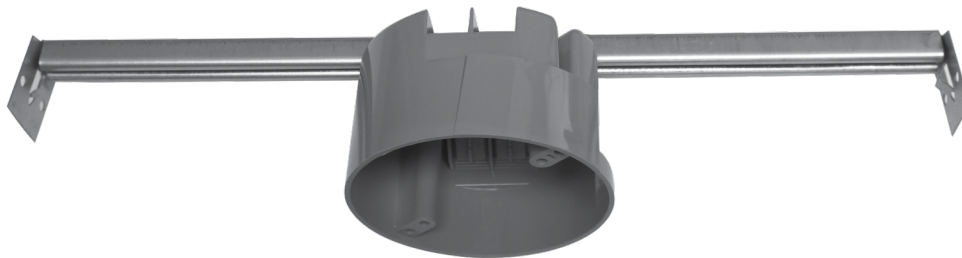
4" round new work non-metallic light fixture box
20in³ or greater, 4" x 2 3/16"



4" Octagon light fixture steel box
4" x 4" x 1 7/16"



4" Octagon deep light fixture steel box
4" x 4" x 2 1/8"



4" round new work non-metallic light fixture box with hanger bar
20in³ or greater, 4" x 2 3/16"

*This is a sampling of the junction boxes compatible with SureFit, and is not an exclusive list. NICOR recommends using 20in³ or greater.

SureFit J-Box Installation



Easy Installation, No Housing Needed

Included screws fasten directly to most any standard 4/0 metallic or non-metallic J-Box with minimum 20 cubic inch volume



No Need for Wirenuts

Four-port poke-in connectors included





SUREFIT

Ordering Information

Construction

Spun aluminum housing routes heat away from electrical components
 Custom designed, integrated driver allows for use in non-metallic 4" and 4/O J-Boxes
 Detachable round steel and square die cast aluminum trim

Optical System

Polystyrene diffuser creates uniform light distribution that reduces glare while maximizing lumen output

Electrical

Utilizes high performing LEDs with a greater than 90 CRI and an R9 greater than 50
 Dimmable to less than 10% with most standard TRIAC dimmers.
 Operating temperature of 0° to 120°F (-18°C to 49°C)
 Input voltage of 120VAC
 TM-21 Reported L70(6K) hours >36,000
 LM-79, LM-80 testing performed in accordance with IESNA standards
 Meets FCC Part 15, Subpart B, Class B standards for conducted and radiated emissions

Finish

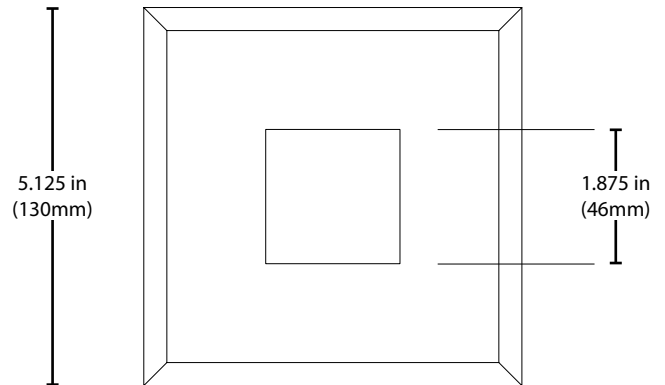
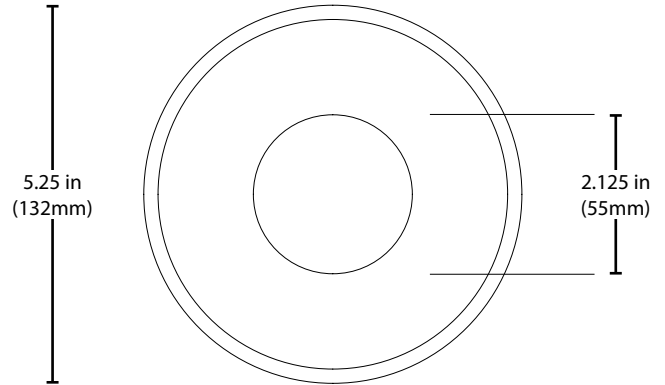
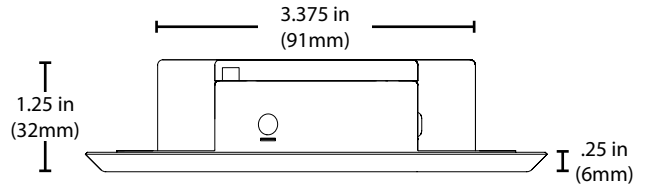
White powder coat finish standard
 Optional trims available in Black, Nickel, Oil-Rubbed Bronze, and White
 Optional trims available in Round or Square

Installation

Easy installation in any 4/O J-Box and 4" non-metallic J-Box of 20 in³ volume or greater
 Fixture mounts directly to J-Boxes with two screws
 Removable trim allows for easy mounting while providing a seamless trim finish
 Four-port poke-in connectors included
 For installations where power surge may be possible, NICOR recommends installing additional surge protection at the electrical distribution panel

Warranty

5-year limited system warranty standard
 Warranty does not cover product failure due to an overvoltage event (power surge)



Performance Data			
Model Number	Lumens	Watts	Lumens/Watt
DLF-10-120-2K-WH	613	9.66	63.5
DLF-10-120-3K-WH	639	9.66	66.1
DLF-10-120-4K-WH	664	9.66	68.7
DLF-10-120-5K-WH	664	9.66	68.7

Ordering Information				
				<i>Example: DLF-10-120-3K-WH</i>
Series	Version	Voltage	CCT's	Color
DLF	10 (Version 1)	120	2K (2700 K)	WH (White)
			3K (3000 K)	
			4K (4000 K)	
			5K (5000 K)	

Accessory Ordering Information				
				<i>Example: DLF-10-TRIM-RD-NK</i>
Series	Version	Accessory Type	Shape	Accessory Color
DLF	10 (Version 1)	TRIM	RD (Round)	NK (Nickel)
			SQ (Square)	OB (Oil-Rubbed Bronze)
				BK (Black)
				WH (White)

Warehouse Locations

Albuquerque, NM
Atlanta, GA
Detroit, MI
Miami, FL
San Antonio, TX

Syracuse, NY
Indianapolis, IN
Hayward, CA
Wood Dale, IL

T 800.821.6283

F 800.892.8393

www.nicorlighting.com

2200 Midtown Pl. NE
Albuquerque, NM 87107 USA



LIT-DLF-SUREFIT-10PK

©2017 NICOR® • ALL RIGHTS RESERVED

