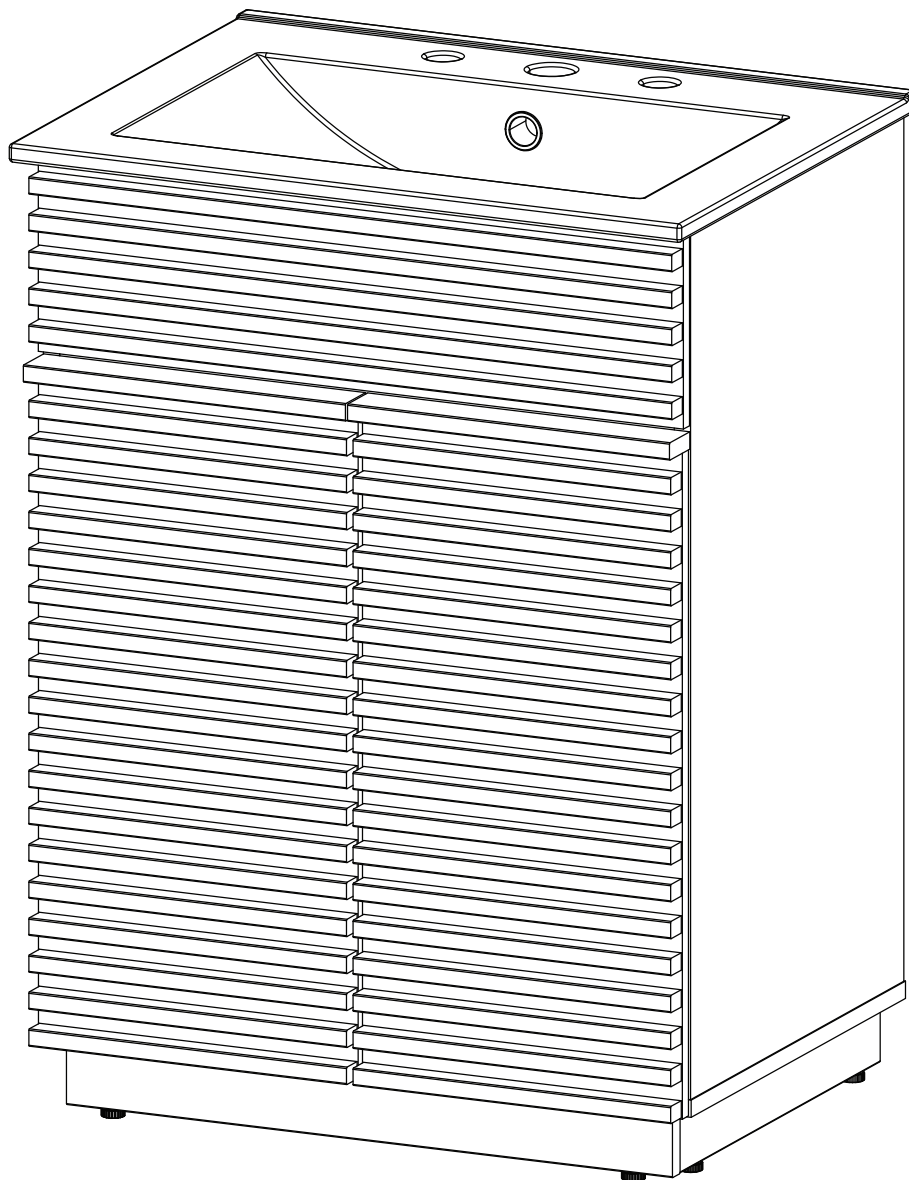


ASSEMBLY INSTRUCTIONS

EEI-6967

V0.02.21.24



Questions? Contact us!
609.256.9000 • cs@modway.com
www.modway.com

***modway**

Let's get started!

*modway



Read though all of the instructions before starting



Care instructions are listed in the last step of this manual



Approx. 90 minutes assembly time



Make sure you have all parts and components before discarding any packing materials



2 people recommended for assembly

Only use hand tools to assemble this item. Do not use power tools. Do not tighten bolts or screws completely until all hardware is lined up and inserted into the holes.

Do not over-tighten screws and bolts to avoid stripping the hardware or cracking the item.

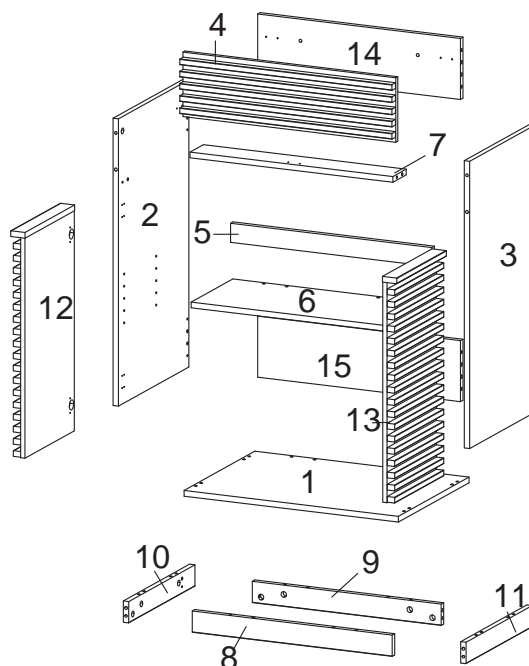
For vanity and plumbing installation, we suggest hiring a professional contractor and plumber

Assemble your item on a flat, carpeted area, with plenty of space to work. This will prevent damage and scratches to your floors or the item while you're assembling the product.

Keep all components and packing out of reach of children or animals to avoid risk of choking or suffocation.

Furniture components

1	Bottom Board	x1	11	Bottom Skirt 4	x1
2	Side Board Left	x1	12	Frame Door Left	x1
3	Side Board Right	x1	13	Frame Door Right	x1
4	Front Skirt	x1	14	Back Board 1	x1
5	Support Board 1	x1	15	Back Board 2	x1
6	Adjustable Shelf	x1			
7	Support Board 2	x1			
8	Bottom Skirt 1	x1			
9	Bottom Skirt 2	x1			
10	Bottom Skirt 3	x1			



Provided hardware:

A		Cam Bolt Ø6 x 35 mm	x22	K		Adjuster	x6
B		Cam Lock Ø15 mm	x24	BC67		Bracket	x2
C		Wood Dowel Ø8 x 30 mm	x32	HS26A		Hinge	x4
D		Screw M 7 x 50 mm	x8				
E		Allen Key	x2				
F		Cam Bolt Ø6 x 32 mm	x2				
G		Screw M 4.5 x 12.5 mm	x36				
H		Shelf Support	x4				
I		Bracket	x1				
J		Foam/Rubber Pad	x8				

What you need:



Phillips



Phillips Head Screwdriver

You may also need:

- + Power Drill
- + Level
- + Silicone Adhesive or Glue
- + Drywall Anchor and Screws
- + Other Wall-Mounting Hardware

Wait!

Missing parts or hardware? Need assistance?
Contact us before returning your item. We're here to help!
609.256.9000 • cs@modway.com

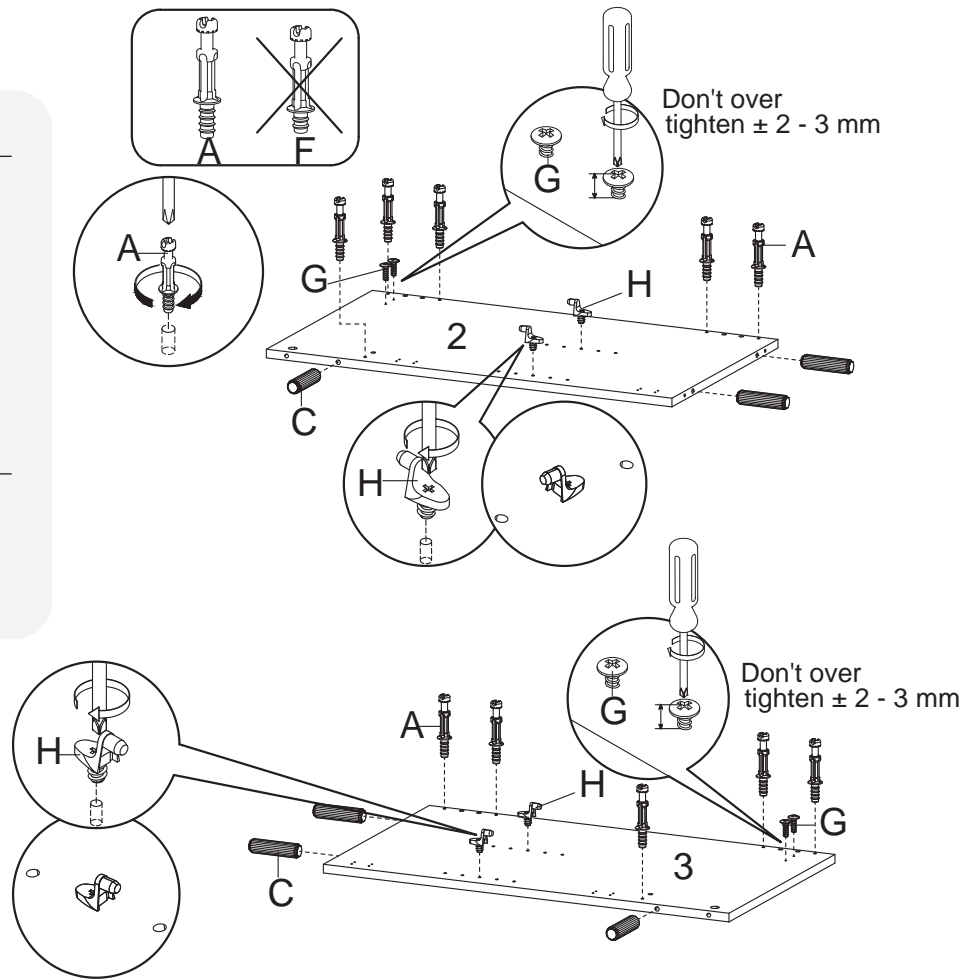
Step 1

HARDWARE

- A** Cam Bolt Ø6 x 35 mm x10
- C** Wood Dowel Ø8 x 30 mm x6
- G** Screw M 4.5 x 12.5 mm x4
- H** Shelf Support x4

COMPONENTS

- 2** Side Board Left x1
- 3** Side Board Right x1



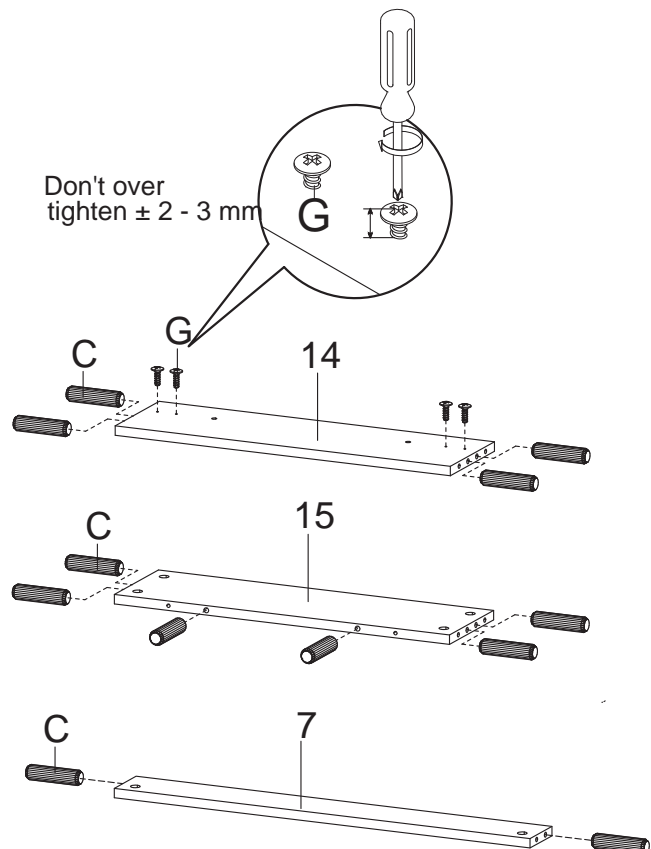
Step 2

HARDWARE

- C** Wood Dowel Ø8 x 30 mm x12
- G** Screw M 4.5 x 12.5 mm x4

COMPONENTS

- 7** Support Board 2 x1
- 14** Back Board 1 x1
- 15** Back Board 2 x1



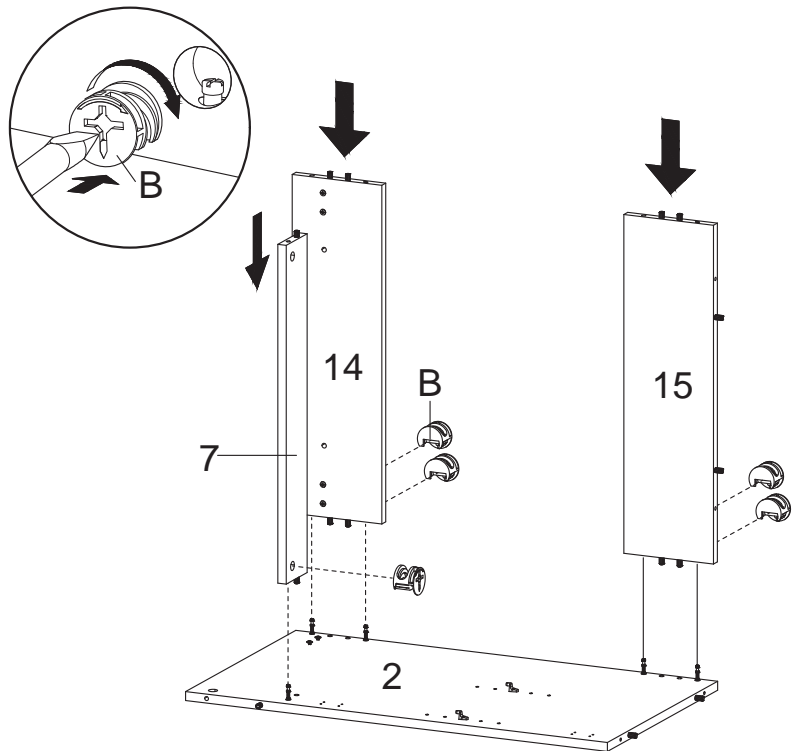
Step 3

HARDWARE

- B** Cam Lock Ø15 mm x5

COMPONENTS

- 2** Side Board Left x1
7 Support Board 2 x1
14 Back Board 1 x1
15 Back Board 2 x1



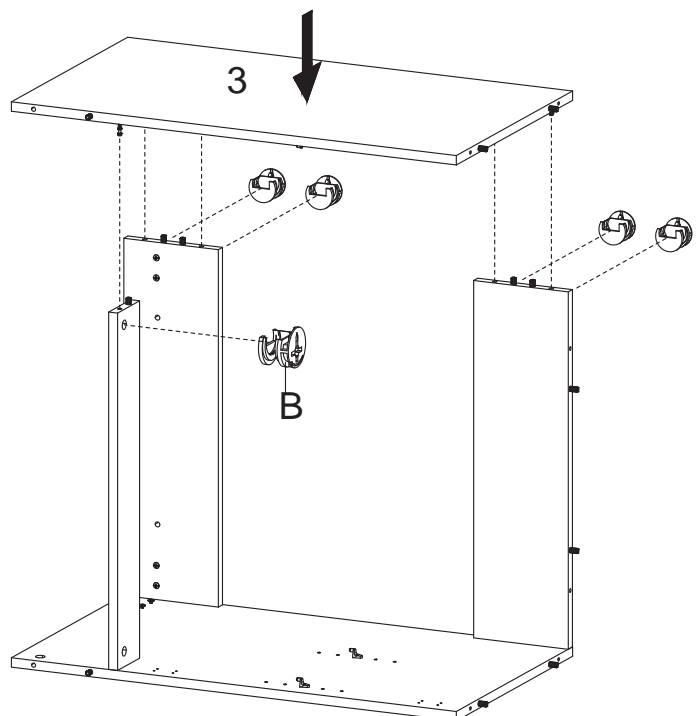
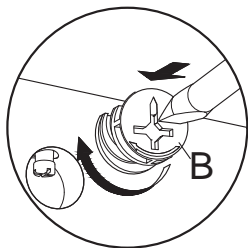
Step 4

HARDWARE

- B** Cam Lock Ø15 mm x5

COMPONENTS

- 3** Side Board Right x1



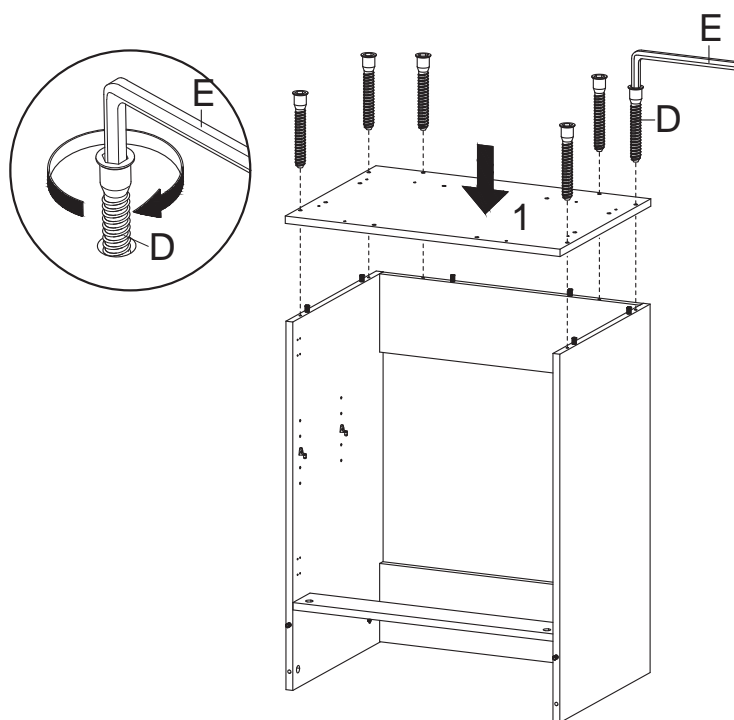
Step 5

HARDWARE

- D** Screw M 7 x 50 mm x6
- E** Allen Key x1

COMPONENTS

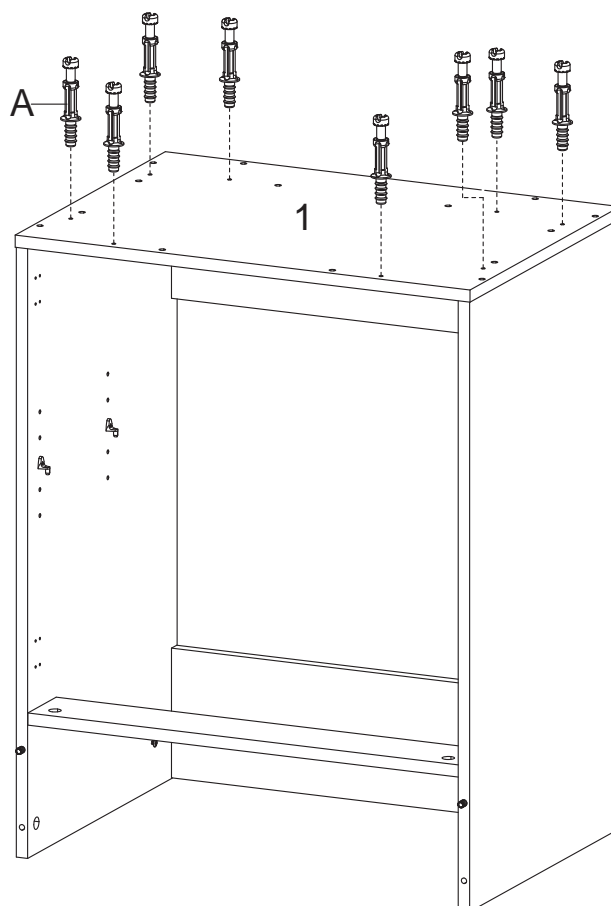
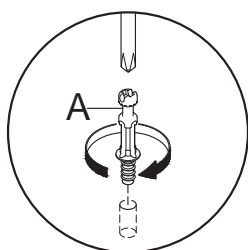
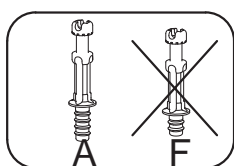
- 1** Bottom Board x1



Step 6

HARDWARE

- A** Cam Bolt Ø6 x 35 mm x8



Cabinet Door Alignment

