

## PRODUCT INSTALLATION

# Before Installation

### IMPORTANT:

Please be advised that the provided cold water T-Valve should be installed at the fill valve under the toilet tank. Do not disconnect from water supply valve on the wall.

**NOTE:** The hot water T-Valve will be installed at the hot water supply under your bathroom sink. If you do not have access to the fill valve under the toilet tank, visit us at **[www.brondell.com](http://www.brondell.com)** or contact us at **1-888-542-3355** for further assistance.

### For SSE-25 Dual Temperature Model Only

Check the size of the hot water supply connection (most likely under the sink/washbasin). This should be a  $\frac{3}{8}$ " connection to properly fit and install the enclosed T-Valve.

**NOTE:** If the connection is a  $\frac{1}{2}$ " connection, you will need to purchase the following reducing adapter available online and at many plumbing hardware stores: **Reducing Adapter,  $\frac{1}{2}$ " Female NPT x  $\frac{3}{8}$ " Male Compression**

### Check water supply line

Check the water supply line that connects the toilet tank fill valve to the water shut-off valve at the wall.

- If it is a rigid pipe, you will need to purchase a flexible water supply hose to replace it before installing the SimpleSpa Eco.
- The length of the hose may vary, and the top connection size should be  $\frac{7}{8}$ " ballcock to connect to the T-Valve that you will install under the toilet tank.
- The bottom connection will vary (most common are  $\frac{3}{8}$ " and  $\frac{1}{2}$ " female compression).

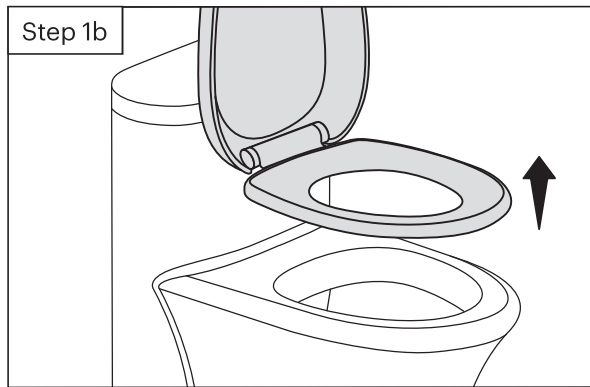
**CAUTION:** Only use the hoses, T-Valves, and components that are included with your product as they have been specifically designed and tested for safe use with this Bidet Attachment. Please note that use of unauthorized or non-Brondell approved parts could result in injury, leaking, or damages that Brondell will not be held liable for.

# Installation

Please read these instructions carefully before installing your SimpleSpa Eco. Failure to do so could result in flooding, leaking or damage to the product.

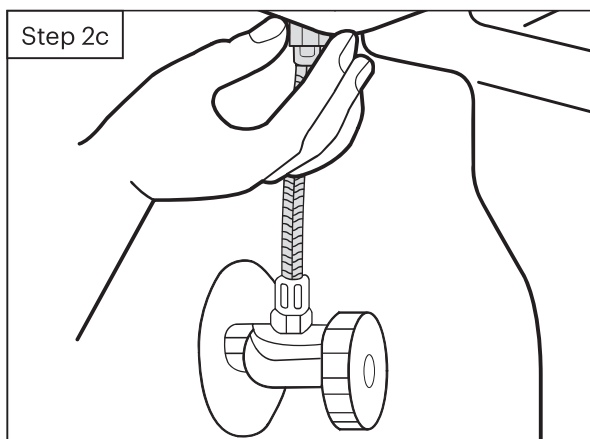
## 1. Existing toilet seat removal

- Lift hinge covers and use flathead or Phillips-head screwdriver to remove the mounting bolts. Alternatively, you may need to loosen the mounting bolts underneath the seat.
- Remove the toilet seat, and set the seat, mounting bolts, and hardware aside.



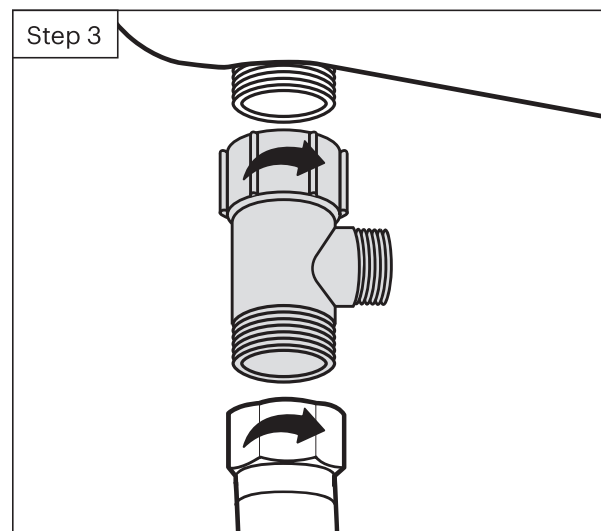
## 2. Turn off water supply valve and flush toilet

- Turn off water supply valve to stop the flow of water.
- Flush toilet and hold down handle to completely empty tank.
- Disconnect water supply hose from toilet tank; do not disconnect from the water supply valve.



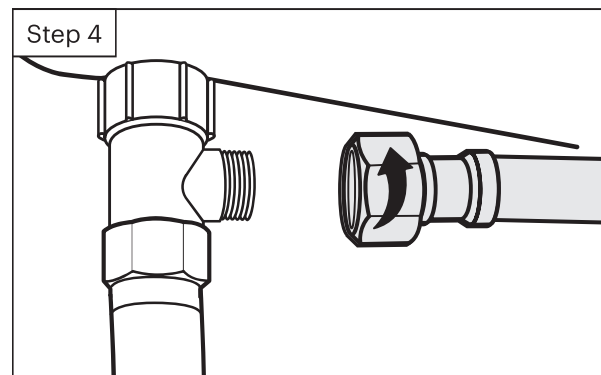
## 3. Connect cold water T-Valve to the toilet tank fill valve

- Install the  $\frac{7}{8}$ " cold water T-Valve with one or both of the large rubber washers to the incoming water connection on the bottom of your toilet tank.
- Connect the cold water supply line coming from the wall to the bottom of the T-Valve.



## 4. Connect bidet hose to T-Valve

Connect one end of the braided-metal cold water bidet hose to the remaining open side of the installed T-Valve.



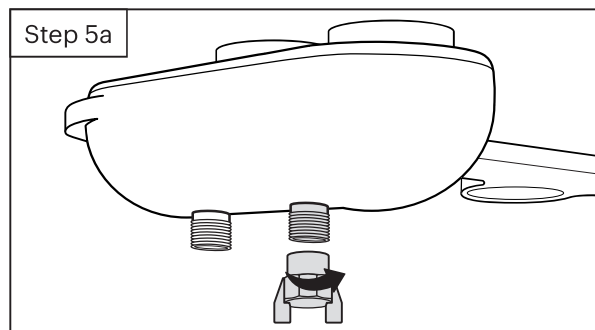
**FOR AMBIENT TEMPERATURE MODEL, STOP HERE AND PROCEED TO "INSTALLING THE BIDET ATTACHMENT" ON PAGE 10. FOR DUAL TEMPERATURE MODEL, CONTINUE.**

## PRODUCT INSTALLATION

# Dual Temperature Model Installation

### 5. Install the hot water supply cap

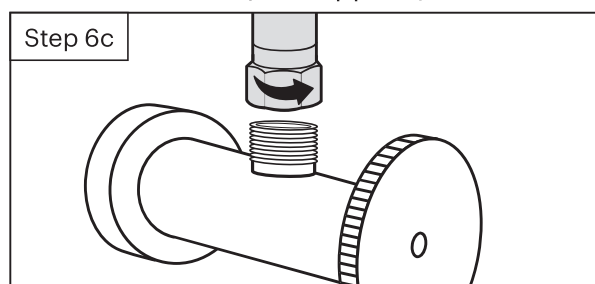
- If you are only connecting the cold water supply, then you must install the hot water supply cap (provided - see Page 5) over the hot water connection on your bidet (see diagram).
- After installing hot water cap, proceed to "Installing the Bidet Attachment" on Page 10. If you wish to connect your hot water supply, proceed to the next steps.



**IMPORTANT:** Failure to connect or cap the hot water supply will result in leaking during use.

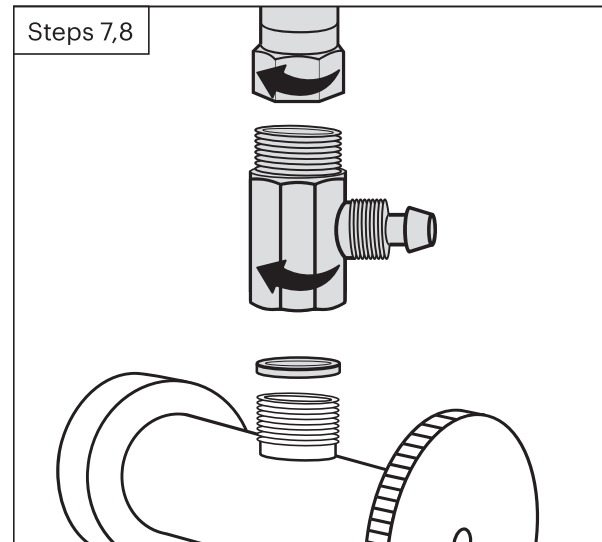
### 6. Disconnect the hot water supply

- Locate the hot water supply line in your bathroom under your sink/washbasin and turn the water supply valve all the way off.
- Drain the hot water line by turning the sink tap on the hot setting until no more water comes out.
- Disconnect hot water supply hose to sink from shut-off valve. You may have to use a  $\frac{3}{8}$ " compatible wrench or a similar tool (not supplied).



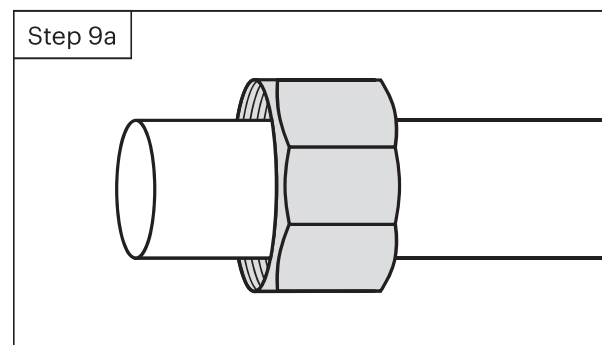
**NOTE:** There may be some residual water in the hose; use a small container or towel to catch any residual water.

- Install the hot water  $\frac{3}{8}$ " T-Valve and the small rubber washers as needed onto the hot water shut-off valve under the sink
- Reconnect hot water supply line to open end (top) of T-Valve



- If not already removed, unscrew the pressure cap covering the pressure connector on the T-Valve

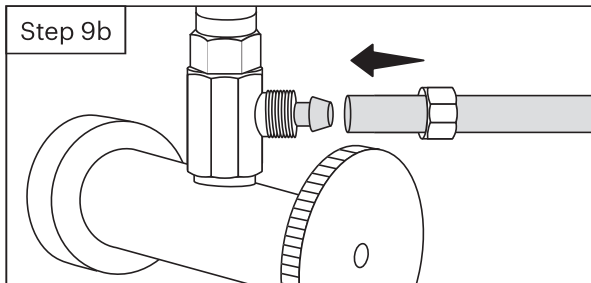
- Slide the pressure cap over the open end of the hot water flex tubing with the inside threads facing towards the open end.



- Push the hot water flex tubing over the pressure connector.

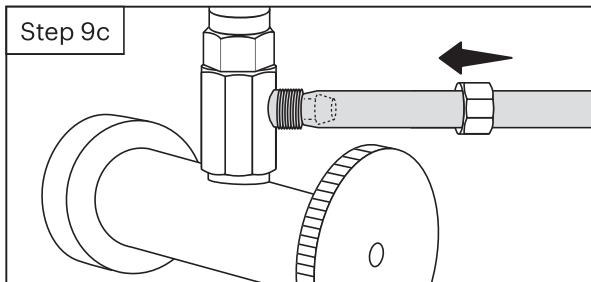
## PRODUCT INSTALLATION

# Installation (Cont'd)

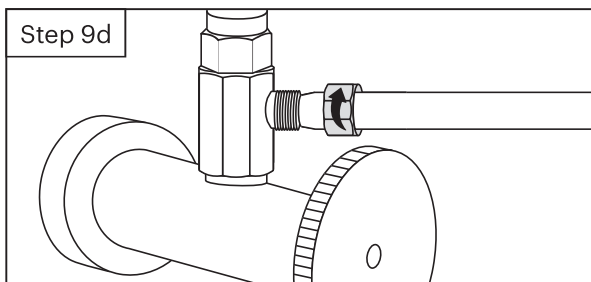


**IMPORTANT:** Be sure to slide the hot water flex tubing over the pressure connector until the tubing slides past the “lip” of the pressure connector and it cannot go any further.

- c. Slide the pressure cap down until the cap meets the pressure connector.



- d. Screw the cap onto the T-Valve until secure and tight.



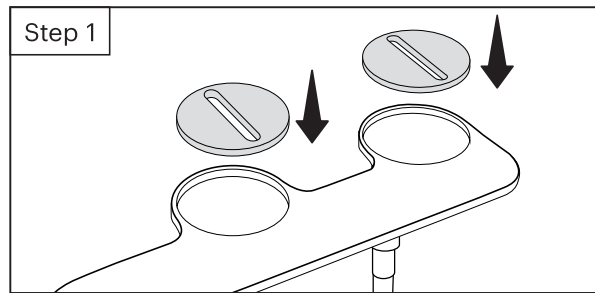
**CAUTION:** Do not overtighten the pressure cap. You will risk damaging the tubing.

## PRODUCT INSTALLATION

# Installing the Bidet Attachment

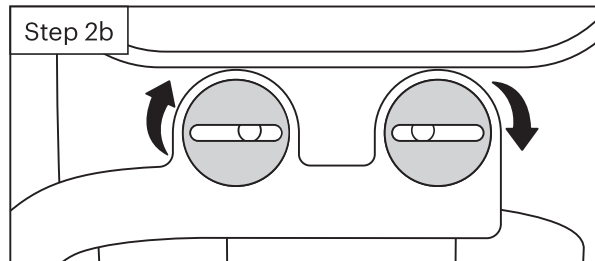
### 1. Install adjustable mounting brackets into the bidet attachment

Place circular mounting brackets into the circular openings of the bidet attachment.

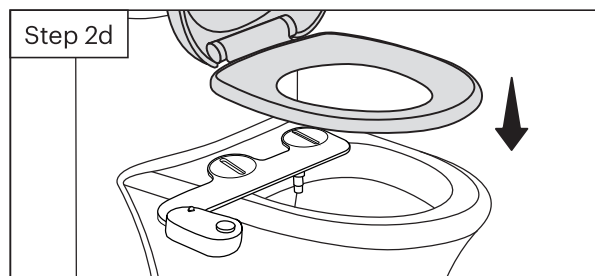


### 2. Install bidet attachment on toilet

- Place the bidet attachment on the toilet with the nozzle close to the back of the toilet, leaving a slight gap between the toilet and the nozzles. This will vary by toilet.
- Make sure the adjustable brackets line up with the holes in the toilet fixture. You may need to rotate the adjustable brackets accordingly to line up properly.



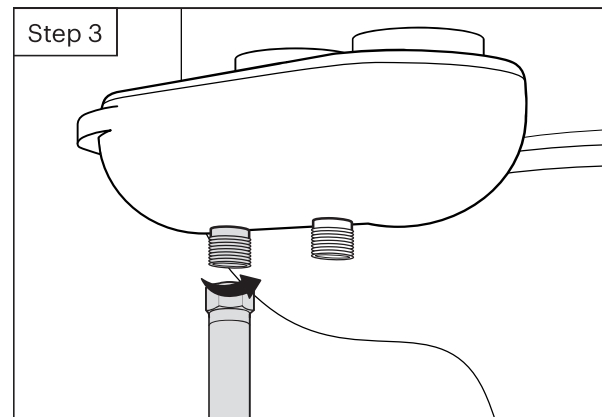
- Add large white mounting washers if needed for a better fit.
- Replace the toilet seat on top of the bidet attachment and secure using original toilet seat hardware. Make sure to tighten so that the bidet attachment and seat do not move.



- Ensure the bidet control knob is in the off position to prevent water from accidentally spraying out of the toilet bowl.

### 3. Connect bidet hose to bidet attachment

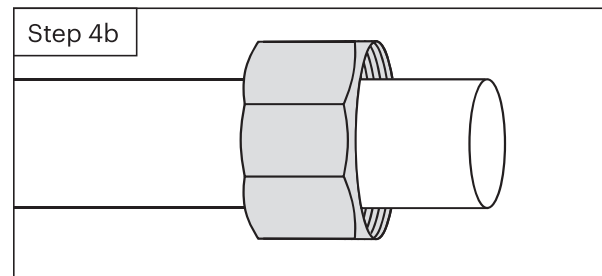
Connect the open end of bidet hose to the cold connection under the bidet attachment.



**NOTE:** If you have already installed the hot water supply cap over the hot water supply on your SSE-25 Dual Temperature model, skip to Step 5 on Page 11. Otherwise, proceed to the next steps.

### 4. Connect hot water tube to bidet attachment (SSE-25 dual temperature model only)

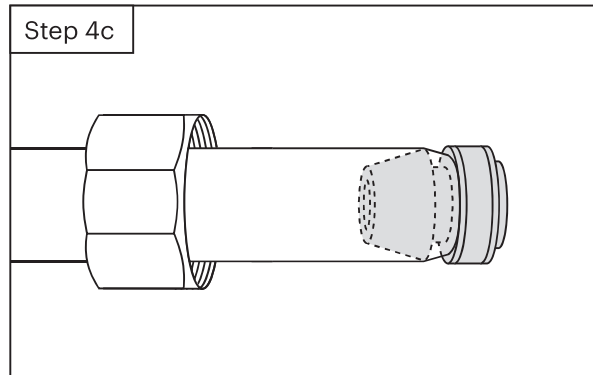
- Take the hot water tubing pressure connector and remove the pressure cap.
- Slide the pressure cap over the open end of the hot water flex tubing with the inside threads facing towards the open end.



## PRODUCT INSTALLATION

# Installing the Bidet Attachment (Cont'd)

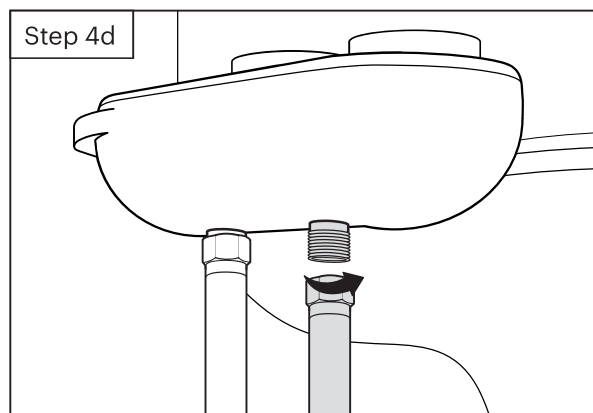
- c. Push the pressure connector into the open end of the of hot water flex tubing with the washer facing out.



**NOTE:** If there is any leaking, check all rubber washers and make sure all water connections are tight and secure. If necessary, wrap Teflon tape around the threading of any leaking connections.

**IMPORTANT:** Be sure to slide the hot water flex tubing over the pressure connector until the tubing slides past the “lip” of the pressure connector and it cannot go any further.

- d. Hold the pressure connector up against the hot water inlet on the bidet attachment. Slide the pressure cap along the tubing and screw the cap onto the hot water inlet until the pressure connector is secure.



### 5. Turn on water supply and check for leaks

- a. Open the main water supply valve slowly and check for leaks.
- b. Wait 5-10 minutes, check again, and if there are no leaks, continue.