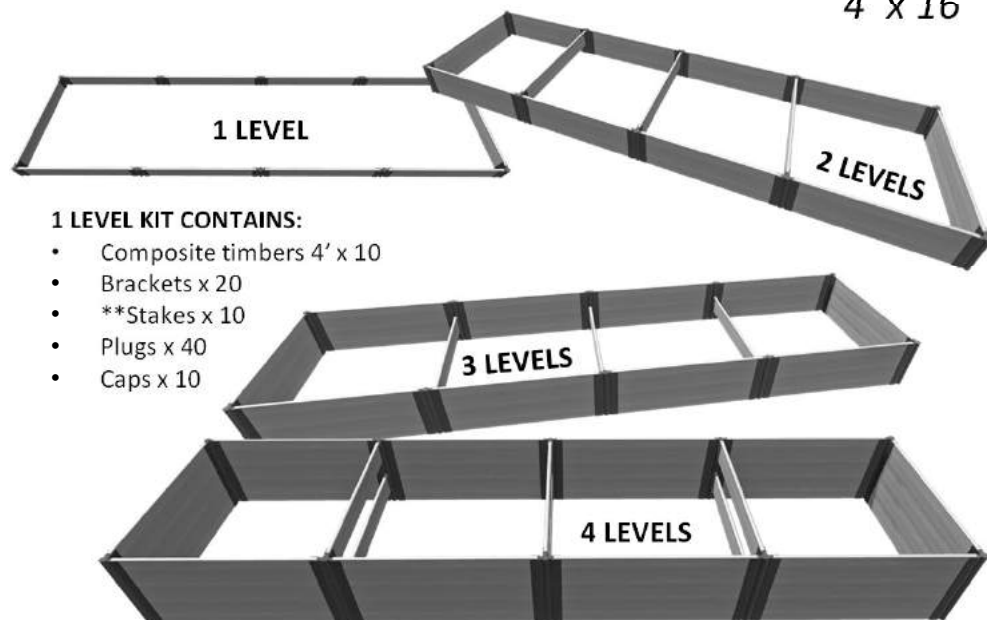


300000078/300001078/300003078/300004078  
 300000402/300001402/300003402/300004402  
 300000435/300001435/300003435/300004435  
 300000451/300001451/300003451/300004451

frameitall  
 simple modular gardens

# RAISED GARDEN BED

4' x 16'



## 1 LEVEL KIT CONTAINS:

- Composite timbers 4' x 10
- Brackets x 20
- \*\*Stakes x 10
- Plugs x 40
- Caps x 10



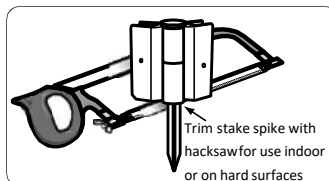
Layout your timbers along the borderline and connect each timber together by inserting the top of the stake through the bracket loops with the stake pointing to the sky. This enables you to freely position your border to get your desired location.

## PARTS IDENTIFICATION



## \*\*NOTE

Anchor stakes should ONLY be use on ground level & middle portion. It CANNOT be used to stack up additional levels. Stacking stakes can be used on all levels and when creating additional levels. ONLY Stacking Stakes can stack!



## FOR INDOOR & HARD SURFACE:

If you plan to assemble raised bed on a hard surface, use hacksaw to remove the spike of each stake. Use these cut down stakes for the base level only of your raised garden.

Customer Service: 1800-914-9835 |  
[support@frameitall.com](mailto:support@frameitall.com)  
 © Frame It All. All Rights Reserved.

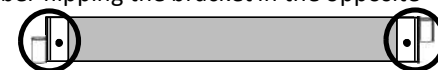
## ASSEMBLY INSTRUCTIONS

### STEP 1:

Assemble the timbers by sliding one end of timber into channel end of one of the brackets. Use plugs to cover the holes on both sides to lock the bracket in place.



Repeat this process on the opposite end of the timber flipping the bracket in the opposite direction (see image). **Repeat for all timbers.**



### STEP 2:

Layout the base level of your raised garden in a straight rectangular shape, using 10 timbers. Insert stake through the hole of the bracket and into each of the corners to lock all sides in place.



**STEP 2a:** For one level, add caps to each of the top corner joints to finish off the raised garden.

**HAPPY GARDENING!**

## ASSEMBLY INSTRUCTIONS – For Product with Second to Four Levels

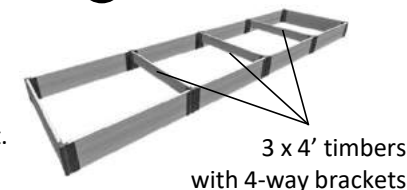
### STEP 3:

For the second level, use 10 x 4' timbers and 3 x 4' cross timbers (refer to 3b) plus the stacking stakes. Insert one stake through the brackets into the hole on top of the stake beneath it to lock the second level in place.

**For 2 levels, USE 4-Way timbers on 2<sup>nd</sup> level ONLY, base level will not use 4-Ways.**

### STEP 3b:

**Assemble 3 x 4' timber** using 4-Way brackets



**Lastly,** add the caps to each of the top corner joint.

**LEVEL 3 & 4:** Repeat steps 3.

The 4-Way timbers will be use on 2<sup>nd</sup> & 4<sup>th</sup> levels ONLY.

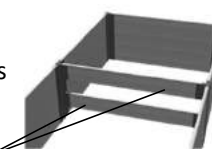
### 3 LEVELS

3 x 4' timbers with 4-way brackets on level 2.

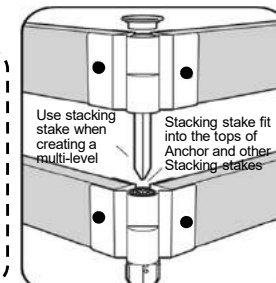
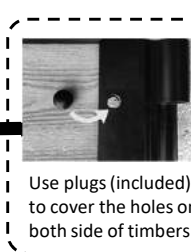
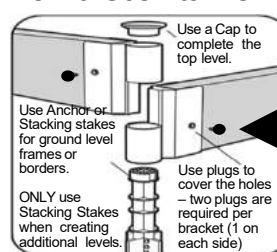


### 4 LEVELS

6 x 4' timbers with 4-way brackets on level 2 & 4.



## How the Joints Work



### 4-Way Bracket:

The 4-Way bracket is comprised of two pieces (A), which when stacked, form the complete bracket (B).

