

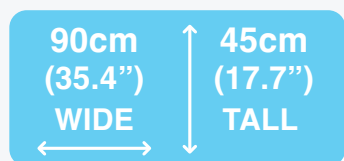


Better Lives for Kids

Swing Down Baby Bed Rail

INSTRUCTION MANUAL

#2774



**IMPORTANT! READ AND FOLLOW
THESE INSTRUCTIONS
CAREFULLY AND KEEP
FOR FUTURE REFERENCE.**

This product complies with safety standard BS7972:2001+A1:2009

TABLE OF CONTENTS

SAFETY INFORMATION

General	03
Maintenance	03
Warnings	04-05

WHAT'S IN THE BOX

Parts	06
-------	----

INSTALLATION

Bar Installation	7
Mesh & Underbar Installation	8
Positioning the Bed Rail	9-10
Minimum Distance	11

OPERATION

How to Operate	12
Cleaning Instructions	13

SUPPORT

Warranty Certificate	14
Warranty Card	15
After Sales Support	15

SAFETY INFORMATION

GENERAL

Read this instruction manual carefully and keep it in a safe place for future reference.

The correct use and maintenance of this product is essential.

MAINTENANCE

Regularly check that the product is functioning correctly, lubricate hinges and moving components. Tighten and adjust mounts to ensure secure smooth operation. Inspect all components regularly and stop using if any component is damaged or missing.

Refer to pages 12 & 13 for operation and cleaning instructions.



WARNING

- Adult assembly required.
- Carefully read all instructions before assembly and use of the product.
- Dispose of all packaging materials carefully after assembly.
- Not suitable for use of children under the age of 18 months or when the child is over the age of 5 years.
- Only use the Bed Rail when the child is able to climb in and out of the bed unaided
- The Bed Rail should not be used as a substitute for a cot as it does not provide the same level of safety as a cot
- The Bed Rail should be periodically checked for its general condition with particular reference to the security of any locking mechanism and/or hinges that are used on the product.
- The maximum thickness of mattress for which the bed rail is suitable is 270mm (10.6").
- Intended for use with single or children's mattress only.

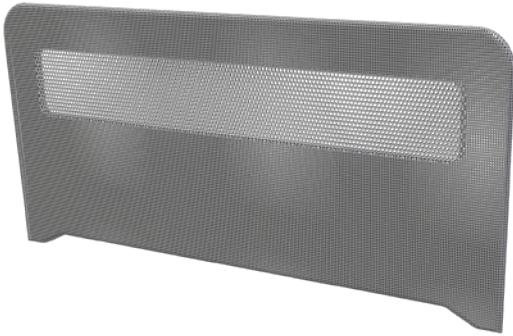


WARNING

- Additional and replacement parts shall be obtained only from the manufacturer.
- This Bed Rail should not be used on a sleeping surface that is more than 600mm (23.6") from the floor.
- To prevent risk of strangulation it is essential to ensure that when the Bed Rail is fitted into position, there is a gap of at least 250mm (9.8"), between each end of the bed and the corresponding end of the Bed Rail.
- Care should be taken in unpacking and assembly.
- Fit the Bed Rail so that its side (when in locked position or when placed in the fitted position), touches the side of the mattress.
- This Bed Rail should not be used unless the fittings are in place and securely attached to both the bed and/or the mattress and the Bed Rail.
- Once fitted in place, the Bed Rail should be checked to ensure that it is properly fitted and secure.

WHAT'S IN THE BOX

PARTS



1 x Bed Rail Mesh



1 x Upper Support Bar



2 x Under Bar with Strap

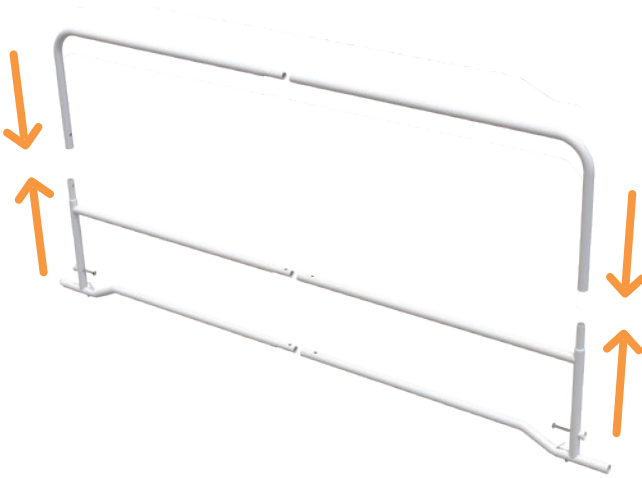


1 x Bottom Support Bar

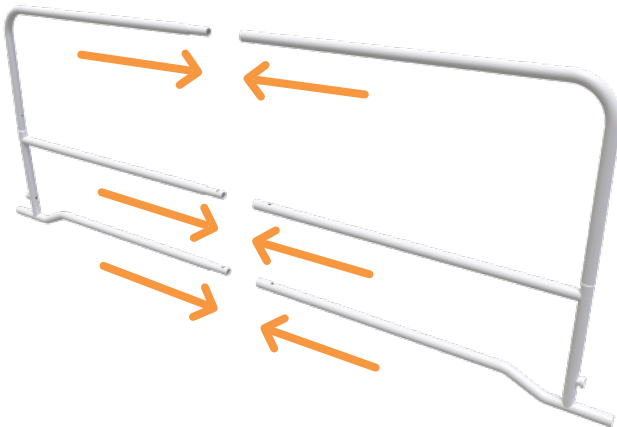
INSTALLATION

Step 1. Bar Installation

1. Insert Upper Support Bar into Bottom Support Bar. Make sure the spring pin fits securely into opposing hole so that the two pieces cannot pull apart.



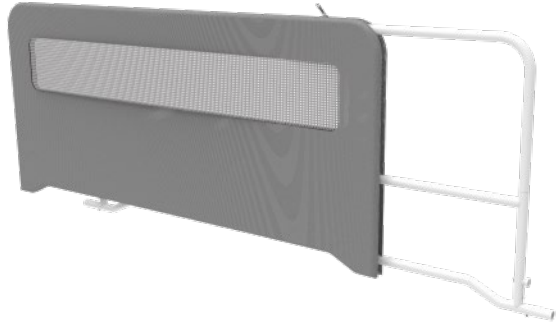
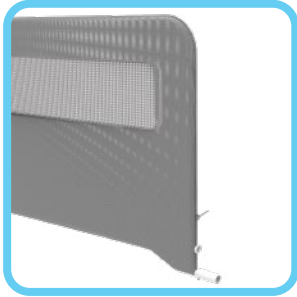
2. Connect the two sides. Make sure the spring pin fits securely into opposing hole so that the bed rail cannot pull apart.



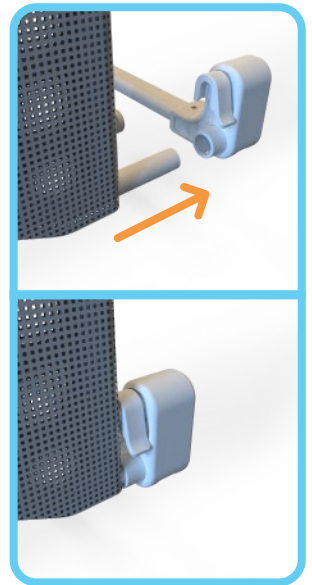
INSTALLATION

Step 2. Mesh & Underbar Installation

1. To install the Mesh on the Bed Rail, slide the Mesh over the Support Bars until it reaches the other end and zip it shut.



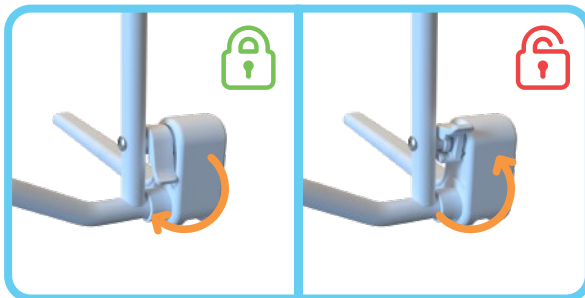
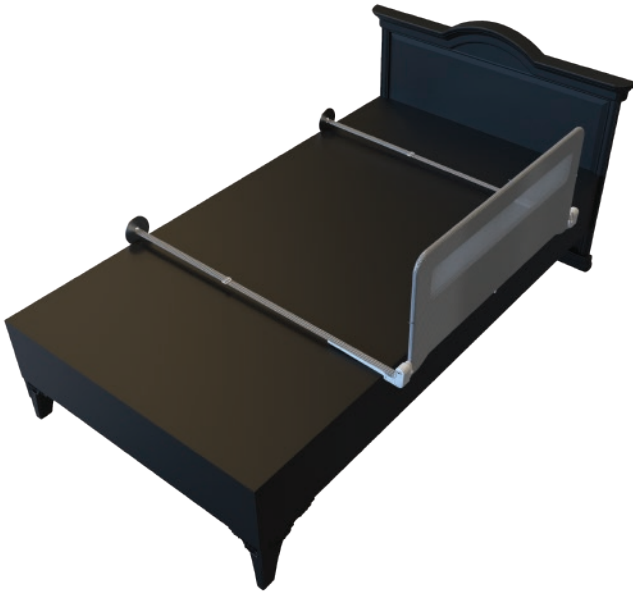
2. Insert the plastic hinge into the assembled panel and press in the metal spring button to fully insert the tube into the hole in the plastic hinge. The spring button should line up with the access hole in the plastic sleeve on the hinge. The spring button will rebound and lock the Underbar into place.



INSTALLATION

Step 3. Positioning the Bed Rail

1. Set up the Bed Rail in locked position. Place the Bed Rail on the side of the bed that you would like to have protected, place the fixed plate with strap on the opposite side of the Bed Rail and mount the outer edge of the box spring. Make sure to adjust the slider to ensure a snug fit against the base of the bed. Always re-adjust the slider whenever there is a change in the Bed Rail position.



INSTALLATION

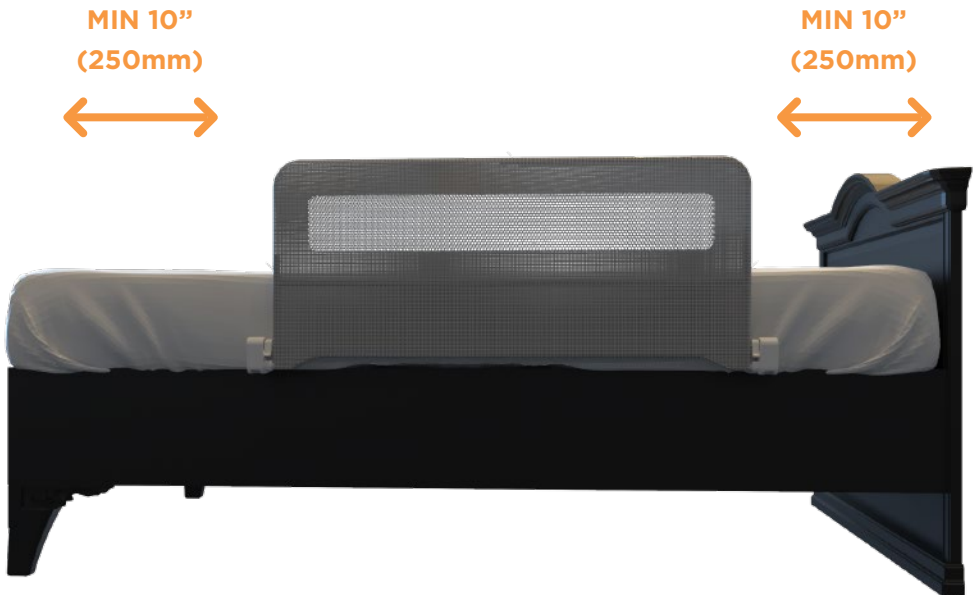
2. Check to make sure the left and right Underbar assemblies are parallel to one another, then place the mattress on the top the assembly.



INSTALLATION

Minimum Distance Warning!

To prevent the risk of strangulation, it is essential to ensure that when the Bed Rail is fitted into position, there is at least 250mm (10") between each end of the bed and the corresponding end of the Bed Rail



OPERATION

HOW TO OPERATE

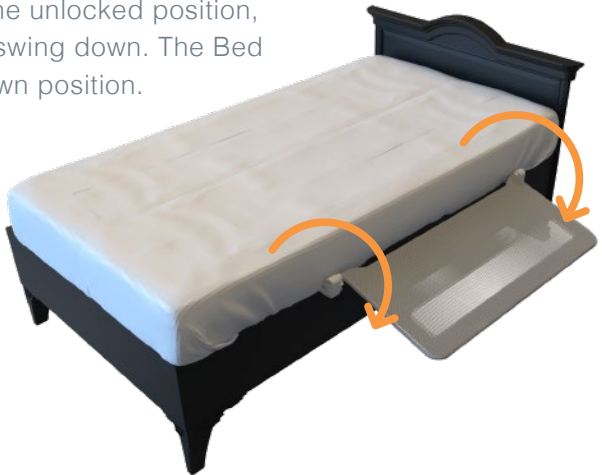
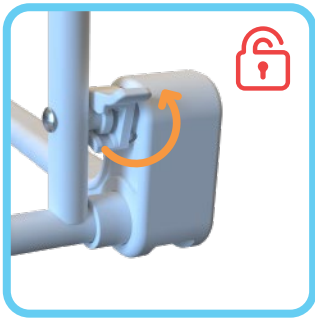
Folding Up Bed Rail

Swing up the Bed Rail, turn the locking tabs and hold them at unlocked position. Continue to swing until the panel touches the side of the mattress. Let go of the locking tabs and the Bed Rail will be locked into in-use position.



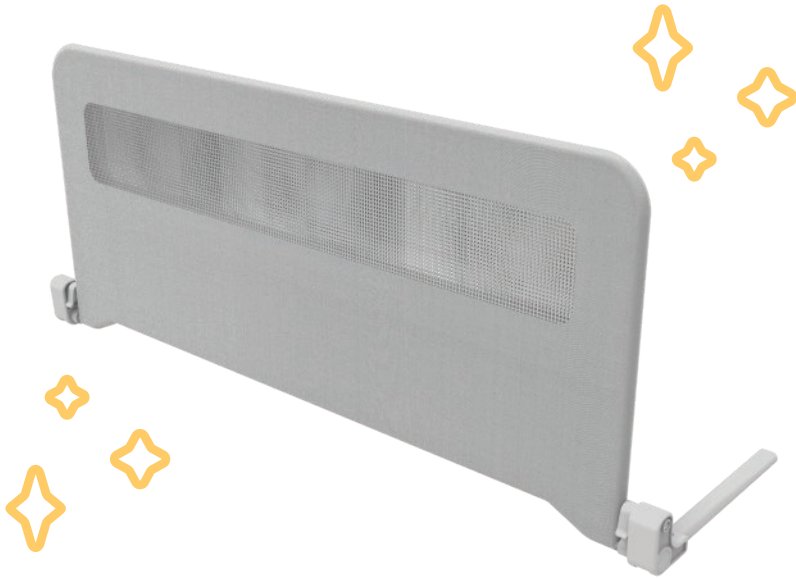
Folding Down Bed Rail

With locking tabs turned to the unlocked position, hold the Bed Rail firmly and swing down. The Bed Rail should now be in the down position.



NOTE: Always check Bed Rail is properly locked and secure when in use.

CLEANING INSTRUCTIONS



Simply use a soft damp cloth to wipe the Bed Rail, dry after cleaning. Do not use chemical or abrasive cleaners.

WARRANTY CERTIFICATE

Congratulations! You have made an excellent choice of this quality product. Our commitment to quality also includes our service. Should you, contrary to expectations, experience defects due to manufacturing faults, we will provide you with a warranty against defects as follows:

WARRANTY

The product is guaranteed to be free from defects in workmanship and parts for a period of 12 months from the date of purchase. Defects that occur within this warranty period, under normal use and care, will be repaired, replaced or refunded at our discretion. The benefits conferred by this warranty are in addition to all rights and remedies in respect of the product that the consumer has under the Competition and Consumer Act 2010 and similar state and territory laws.

Our goods come with guarantees that cannot be excluded under the Australian Consumer Law. You are entitled to a replacement or refund for a major failure and for compensation for any other reasonably foreseeable loss or damage. You are also entitled to have the goods repaired or replaced if the goods fail to be of acceptable quality and the failure does not amount to a major failure.

PROOF OF PURCHASE

This warranty is valid for the original purchase and is not transferable. Please keep your purchase docket, tax invoice or receipt as proof of purchase and date of which the purchase was made.

EXTENT OF WARRANTY

This warranty is limited to defects in workmanship or parts. All defective products or parts will be repaired or replaced. This warranty does not cover consumable items.

NORMAL WEAR AND TEAR

This warranty does not cover normal wear and tear to the products or parts.

EXCLUSIONS

This warranty does not cover:

- Any defects caused by an accident, misuse, abuse, improper installation or operation, lack of reasonable care, unauthorised modification, loss of parts, tampering or attempted repair by a person not authorised by the distributor.
- Any product that has not been installed operated or maintained in accordance with the manufacturer operating instructions provided with the product.
- Any product that has been used for purposes other than domestic use.

TO MAKE A CLAIM

If a defect in the goods appears within 12 months, you are entitled to claim a warranty. Please contact after sales support via the link below:

www.permachildsafety.com/contact-us

Please ensure that you have a copy of proof of purchase so that we are able to respond as quickly and efficiently as possible.

WARRANTY CARD

DETAILS:

PRODUCT NAME: Baby Bed Rail

PRODUCT NUMBER: 2774

YOUR NAME:

ADDRESS:

PHONE:

EMAIL:

DATE OF PURCHASE:

LOCATION OF PURCHASE:

We recommend that you keep a copy of your receipt, showing the date of purchase, with this warranty certificate and keep for your reference. In the event of a product fault, please contact after sales support. Ensure that you include the product details (as shown on this card) so that we are able to respond as quickly and efficiently as possible.



AFTER HOURS SUPPORT



Scan the QR code for Live Chat Support
or visit: permachildsafety.com/contact-us



Scan the QR code for Live Chat Support
or visit: permachildsafety.com/contact-us



Perma Child Safety



@permachildsafety